

# THE VALENTINE'S DAY SALE



Schuyler  
Rumsey  
Philatelic  
Auctions

FEBRUARY

14

2024



# The Valentine's Day Sale

## Public Auction No. 113

Wednesday, February 14, 2024 at 10:00 AM Pacific

To be held at our San Francisco Auction Galleries

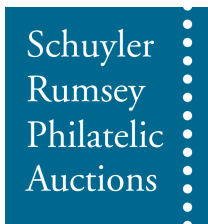
47 Kearny St, Suite 500, San Francisco, CA 94108



Viewing of all lots in our Auction Galleries:

Monday - Tuesday, February 12-13 (10:00AM to 5:00 PM)

Live auction bidding via Stamp Auction Network ([www.stampauctionnetwork.com](http://www.stampauctionnetwork.com))



## SCHUYLER J. RUMSEY

Philatelic Auctions, Inc.

47 Kearny St., Suite 500

San Francisco, CA 94108, USA

Telephone: 415-781-5127 Fax: 415-781-5128

E-mail: [srumsey@rumseyauctions.com](mailto:srumsey@rumseyauctions.com)

Catalogs, Internet Bidding and Resources at our Website: [www.rumseyauctions.com](http://www.rumseyauctions.com)

Catalog Price \$20



### Bidding Increments

\$10-\$300 . . . . .	\$10	\$3,000-\$7,500 . . . . .	\$250	\$75,000-\$150,000 . . . . .	\$5,000
\$300-\$750 . . . . .	\$25	\$7,500-\$15,000 . . . . .	\$500	Over \$150,000 . . . . .	Auctioneer's discretion
\$750-\$1,500 . . . . .	\$50	\$15,000-\$30,000 . . . . .	\$1,000		
\$1,500-\$3,000 . . . . .	\$100	\$30,000-\$75,000 . . . . .	\$2,500		

### Recommended Auction Agents

**Charles E. Cwiakala**  
 1527 S. Fairview Avenue  
 Park Ridge, IL 60068-5211  
 Tel./Fax: (847) 823-8747  
 Email: CECwiakala@aol.com

**Frank Mandel**  
 P.O. Box 157  
 New York, NY 10014  
 Tel: (212) 675-0819  
 Fax: (212) 366-6462  
 Email: busybird1@me.com

**Nick Martin**  
 Angel House, Station Road  
 Lincolnshire PE20 2JH  
 United Kingdom  
 Tel: (44) 120 546-0968  
 Cell: (44) 0770 376-6477

**Giacomo Bottacchi**  
 Via Filli Bronzetti 21  
 Milano 20129  
 Italy  
 Tel: (02) 718-023  
 Fax: (02) 738-4439  
 Email: gbstamps@iol.it

**Jochen Heddergott**  
 Bauerstrasse 9  
 D-8000 München 40  
 Germany  
 Tel: (089) 272-1683  
 Fax: (089) 272-1685  
 Email: mail@philagent.com

**Trevor Chinery**  
 9 St. Laurence Way, Stanwick  
 Northamptonshire NN9 6QS  
 England  
 Tel: (044) 1205 330 026  
 Fax: (044) 1933 622 808  
 Email: TrevorTrilogy@aol.com

### Symbols

**	Mint (never hinged)	☒	Cover	S	Specimen
*	Mint (hinged)	(☒)	Cover Front	//	Incomplete Set
(*)	Mint (no gum/regummed)	B	Booklet or Booklet Pane	▲	On Piece
o	Used	E	Essay		
☐	Block	P	Proof		

### Grading and Condition

<b>Superb</b>	Extraordinary item in the finest condition.
<b>Extremely Fine</b>	Outstanding and exceptional quality.
<b>Very Fine</b>	Choice, first-class condition.
<b>Fine-Very Fine (F-VF)</b>	Stamp or cover in sound condition; if a stamp, it is slightly less well-centered than Very Fine but better centered than Fine.
<b>Fine</b>	Sound in all respects. Perforated stamps will have the designs clear of the perforations; the designs of imperforate stamps will not be cut in to any significant degree.
<b>Very Good (VG)</b>	Imperfect centering (stamps) or poor general appearance.

Any stamp faults such as a thin spot, tear, crease etc., will be described at all times. Postally used covers should be expected to have the normal degree of wear associated with them and this wear is not grounds for return. The grade of a cover is independent of the grade of the stamps on it. Covers from the famous Carroll-Hoy correspondence will normally have a small unobtrusive staple hole. In lots containing several items, degrees of condition denote the overwhelming average and examples above and below such condition can be expected.



# Terms of Sale

## Bidding

I. All bids (whether by floor bidders, mail bidders, or telephone bidders) will have a premium of 18% added to the auction sale price.

II. All bids are per lot as numbered in the catalog unless otherwise announced by the auctioneer at the time of sale. The right is reserved to withdraw any lot prior to sale, to divide a lot, or to group two or more lots, or to act on behalf of the seller. Schuyler Rumsey Philatelic Auctions, Inc. will execute bidding instructions on behalf of clients, but will not be responsible for any errors in the execution of such bids. Schuyler Rumsey Philatelic Auctions, Inc. is not liable for bidding errors related to live auction internet bidding and/or the loss of internet connection during the live auction.

III. The highest bidder shall prevail; lots are sold at one increment over the second highest bid. Should any dispute arise between bidders, the decision of the auctioneer as to the successful bidder and the reoffering or resale of the lot under dispute shall rest entirely on the judgment of the auctioneer. The auctioneer shall regulate the bidding and reserve the right to refuse any bid believed by him not to be made in good faith.

IV. Consignor has and retains the right to bid personally, or by his duly appointed agent, through the auctioneer, unless the sale is advertised and announced as one restricting such bidding by consignors or their agents.

## Payments of Purchases

V. FLOOR BIDDERS. Floor bidders shall furnish the auctioneer their names and addresses prior to bidding on any lot. The name and address of the buyer of each lot shall be registered with the auction house following the sale of each lot. Payment of the whole purchase price shall be made by the floor buyer in such manner as the auctioneer may determine. Special credit arrangements must be made prior to the sale.

VI. MAIL BIDDERS. A successful mail bidder will be notified of lots purchased and must remit payment before the lots are sent. Auction bills are due and payable upon receipt of notification. If buyer's payment is not received within ten (10) days, Schuyler Rumsey Philatelic Auctions, Inc. may resell all lots without notice. Any and all losses incurred as a result of resale will be passed on to the defaulting buyer. Cost of postage, registration, etc. will be charged to buyer. Proof by the auctioneer of receipt of sending at the advised address shall constitute delivery.

VII. DIRECT DRAFTS/TRANSFERS. A successful mail bidder known to us may contact our office at (415) 781-5127 for the information necessary to pay directly into the vendor bank account. Any additional charges resulting from processing payments by this method shall be borne by the buyer. Method of payment should be noted on the bid sheet.

VIII. Title shall not pass to the buyer until full payment is received by Schuyler J. Rumsey Philatelic Auctions, Inc.

IX. All of our lots are sold as genuine. Lots accompanied by recent (within 5 years of sale date) expert certificates are sold "as is" based on the description in the certificate. The aforementioned expertized lots may not be returned under any circumstances including those instances in which subsequent certificates yield conflicting opinions. The accepted authorities for U.S. stamps are the Philatelic Foundation (P.F.), the Philatelic Stamp Authentication and Grading, Inc. (P.S.A.G.) and the Professional Stamp Expertizing Committee (P.S.E.). **In addition, a lot may not be returned because an expertizing service grades a stamp lower than the grade stated in the description, or differs from the accompanying certificate.**

X. The Auctioneer must be notified within 5 business days from the date of the auction of any request to place a lot on extension for expertizing. All extensions must be paid in full, in advance. There will be no exceptions and no lots may be returned under any circumstances if this term has not been strictly followed.

XI. All lots on extension must be submitted for expertizing by the auctioneer exclusively. Each lot is sold as genuine, except those described "as is", but when, in the opinion of a competent authority acceptable to Schuyler J. Rumsey Philatelic Auctions, Inc., the lot is declared otherwise, the purchase price will be refunded in full. The lot must be received by Schuyler J. Rumsey Philatelic Auctions, Inc. within a period of 21 days from the date of auction. Expenses incurred for purposes of expertizing shall be borne by the purchaser except where the lot is found by said competent authority to be materially not as described, in which case the consignor will be responsible for expertizing costs incurred. Proof of the inability of said competent authority to express a definite opinion is not grounds for return of an item.

XII. Any lot, description of which is incorrect, is returnable (A) within three (3) days of receipt and (B) if received by Schuyler J. Rumsey Philatelic Auctions, Inc. within twenty-one (21) days from the date of the auction. All disputed lots must be returned intact, in the condition received; no adjustments will be made. The following lots are not returnable: lots containing ten (10) or more items; lots from purchasers OR THEIR AGENTS who had the opportunity to examine them before the auction; items described as having defects or of a quality standard "Very Good" (V.G.) or below; lots with disputed centering or margins when the item is photographed; lots described "as is".

XIII. JURISDICTION. In the event of any dispute between the auctioneer and bidders, or between any parties requesting inspection of any of the lots and the auctioneer, or between persons offering their lots to be auctioned and the auctioneer, the jurisdiction over the dispute shall be in the City and County of San Francisco, State of California.

XIV. In the event of any dispute, the prevailing party shall be entitled to court costs and reasonable attorney's fees.

XV. The California State Sales Tax - or that of another state as ordered by the laws of such a state (as appropriate) - is payable by buyers liable to tax. See below.

## Sales Tax

This sale will be held in California and the buyer will be liable for any applicable sales tax for this auction. Any lots purchased by buyers in California or that of another state as ordered by the laws of such a state are subject to State Sales Tax unless:

1.) You have a verifiable resale license number, which must be on file with us prior to the Auction.

OR

2.) You are not a California resident or that of another state as ordered by the laws of such a state are subject to State Sales Tax and your lots are being shipped to your out-of-state or out-of country mailing address.

XVI. THE PLACING OF A BID SHALL CONSTITUTE ACCEPTANCE OF THE FOREGOING TERMS OF SALE.



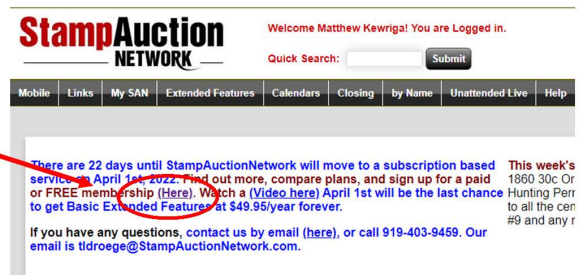
# Live Auction Bidding Hosted by Stamp Auction Network

Bid Live via the internet as though you were on the auction room floor!

**On April 1, 2022, Stamp Auction Network will move to a subscription (membership) service. To continue bidding with SAN, new and previously registered users will need to sign up for a free membership.**

To sign up for a membership please follow the steps below:

- Log into into your SAN account.
- From the SAN main page, click the link illustrated below on the "Compare Plans and sign up for a paid or free membership" line in red.



The link will direct to the "Sign up for Membership Page". Scrolling down the page there will be four columns describing the different levels. At the bottom of the second column "Membership Includes" there will be the FREE option to click.

Free to all:	Membership includes:	Basic Extended Features	Premium Extended Features
<p><b>Auction Catalogs</b>... Calendars, and Auction Profiles.</p> <p><b>Newsletter</b>... Notices of upcoming auctions when published</p> <p><b>"My Collection"</b>... Add items you did not purchase on SAN to your on-line collection and match them up against our database and find matches.</p> <p><b>"My Purchase History"</b>... Access your individual purchase history for major sales from 2001-2017. Plus starting in 2018 we will keep all purchase history where the auction firm records you as the winner.</p> <p><b>"My Archived Bids"</b>... Access your individual bidding history for major sales back to 2014. From 2016 all your bidding history is kept for you to review.</p> <p><b>"Post your own Prices Realized"</b>... Join the movement to build the prices realized for the auction firms that won't!</p> <p><b>Zoom Meetings</b>. Join the StampAuctionNetwork community for regular Zoom meetings on a number of helpful topics.</p> <p><b>Selling your Collection</b>. We can help you find an auction company to consign your collection to.</p>	<p><b>Bidding</b>... Live Bidding, Absentee Bidding and Watchbids.</p> <p><b>Unattended Live Bidding</b>... Prepare bids ahead of time that are executed at the opening of the lot in a live bid auction without revealing the maximum amount. Free if you win less than \$2000 in winning bids.</p> <p><b>Search Current Auctions</b>... Saved Searches and search notifications by email.</p> <p><b>Email and Telephone Support</b>... Contact us directly by phone or email with questions or for assistance.</p> <p><b>BASIC Extended Features</b>... Membership Promotion at \$49.95 / year upgrades you to BASIC Extended Features (at right) forever.</p> <p><b>Auction Company Support</b>... Any kind of support we provide to contact auction companies on your behalf.</p> <p><b>Remember</b>... Free One Year Memberships are always available. See below.</p> <p><b>The Main Difference between membership and Basic Extended Features</b> is the ability for you to search and research our 2.5 million record database of prices realized. If you want that either now or in the future, you should sign up today and be able to renew forever at the \$49.95 / year rate.</p> <p>Your Current Plan: On 2022-02-07 you signed up for Membership at the rate of \$0/year. Your service will expire 2023-02-07.</p> <p>Sign up for Full Membership below - \$49.95/year. For a limited time this includes BASIC Extended Features (at right).</p>	<p><b>Search Auction History</b>. For everyday items, collections, varieties, cancels, keywords. Maximum 250 records returned.</p> <p><b>Get Market Data</b>. Pull Relevant data from the StampAuctionNetwork Database while browsing a catalog or making bids. Maximum 250 records returned.</p> <p><b>Want Lists and want list notifications</b>. Save your searches across the entire database and get notifications.</p> <p><b>Integration with 4 Powerful Search Tools</b>. Philatelic Foundation's PF Search (Census/Population), and Professional Stamp Experts (PSE) Population report.</p> <p><b>Remember Search can be Research</b>.</p> <p>Pay with a \$7.50 monthly recurring fee at PayPal here.</p> <p><b>PayPal Subscribe</b></p> <p><b>PayPal CREDIT Subscribe</b></p> <p><b>Debit or Credit Card</b></p> <p>Powered by <b>PayPal</b></p> <p>Or Pay \$79.95 / year here.</p> <p><b>PayPal Subscribe</b></p> <p><b>PayPal CREDIT Subscribe</b></p> <p><b>Debit or Credit Card</b></p> <p>Powered by <b>PayPal</b></p>	<p><b>Access to Census and Provenance</b>. Full access to on-line Research, Census data, Provenance records, including our provenance screening tool.</p> <p><b>See your Provenance Matches in MyPurchases and MyCollections</b>. Instant access to Census data from your purchases and collection.</p> <p><b>Access to your online Provenance Reports</b>. Extended features is required to view your provenance reports online.</p> <p><b>Search Auction History</b>. Over 2.5 million lots with prices representing over \$2.2 billion of sales worldwide back to 2001. Images, Charting, Topical Search, Worldwide Search, and more...</p> <p>The StampAuctionNetwork 10000. These metrics are a measure of the stamps that are most likely to be offered as a single stamp or cover, and more...</p> <p><b>Get Market Data</b>. Pull All (unlimited) Relevant data from the StampAuctionNetwork Database while browsing a catalog or making bids.</p> <p><b>Integration with 4 Powerful Search Tools</b>. Philatelic Foundation's PF Search (Census/Population), and Professional Stamp Experts (PSE) Population report.</p> <p><b>Want lists and want list notifications, plus "WantList Marketplace"</b> peer to peer private treaty sales.</p> <p><b>Connections</b> Connect with other collectors to share your expertise, jump start a new collecting interest, or mentor a new collector.</p> <p>Pay with a \$29.95 monthly recurring fee at PayPal - cancel anytime. Sign up here.</p> <p><b>PayPal Subscribe</b></p> <p><b>PayPal CREDIT Subscribe</b></p> <p><b>Debit or Credit Card</b></p> <p>Powered by <b>PayPal</b></p> <p>Or Pay \$325 / year here.</p> <p><b>PayPal CREDIT Subscribe</b></p>
	<p>Powered by <b>PayPal</b></p> <p><b>FREE MEMBERSHIP</b>. Do not sign up for a free membership if you are already a paid member. It will cancel your access to the paid services.</p> <p><b>Free 1 Year Membership</b></p>		

- Once clicked, you will be returned to the main page and receive an email confirming that you are subscribed, and will have the same capabilities as you do now.

If there are any questions, please do not hesitate to contact our office either by phone or email.

Bidders will need to renew their free SAN membership annually.

**For any questions or concerns during the auction, please contact our office:**

**srumsey@rumseyauctions.com**

**(415) 781-5127**



# The Valentine's Day Sale

## Table of Contents

Wednesday, February 14, 2024, at 10:00 A.M.

### United States of America

- 1001-1056 Stampless Valentines - by State
- 1057-1057 Valentines - Postmasters' Provisionals
- 1058-1155 Valentines - Regular Issues
- 1156-1162 Valentines - Carrier Usages
- 1163-1179 Valentines - Local Usages
- 1180-1180 Valentines - Revenue Usages

### Confederate States of America

- 1181-1181 Valentines - U.S. Used in the Confederacy
- 1182-1182 Valentines - State Postmarks
- 1183-1192 Valentines - Regular Issues
- 1193-1197 Valentine Collections and Balances





# The Valentine's Day Sale

## United States of America

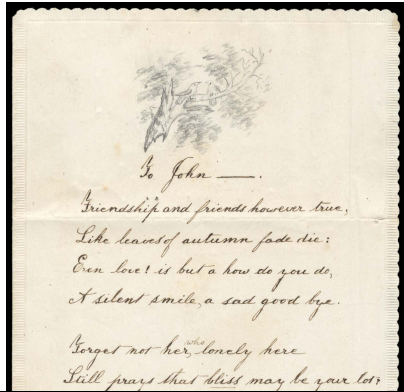
### Stampless Valentines - by State

- 1001 ☒ (Connecticut) Bristol, Ct., Feb 14, blue "Valentine's Day" cds with matching "V" in circle rate and straight line "Advertised 2ct." handstamps, manuscript St. Valentine endorsement at bottom left on cover to Utica, N.Y. with blue bordered backflaps, with original Valentine page enclosure with hand written 8-line poem datelined "Feb 14/1851" and pencil Doves in "Love" Tree illustration above; cover with light edge stains and small tear at top, **Very Fine**, illustrated in February 2019 edition of *The American Philatelist* (page 150).  
Estimate. . . . . \$200 - 300
- 1002 ☒ (Connecticut) Glasgo, Ct., Feb 13, red cds with manuscript date on oversized green and gold bordered Valentine cover to Groton, Conn., matching "Paid 3" in circle rate handstamp, with ornate embossed bordered Valentine with silver and colored embellishments; some cover edge soiling, **still Very Fine, ex-Haas**.  
Estimate. . . . . \$300 - 400



- 1003 ☒ (Connecticut) Groton, Ct., Feby 16, bold cds with manuscript day with matching "10" in circle rate and "Mar, Advertised" handstamps, on oversized gold ornate bordered Valentine cover to Norwich, Conn., reverse with top and bottom flaps with matching illustrated female portraits inscribed "Remember Me Love.", original pierced lace bordered Valentine with elaborate floral and silver embellishments around lace and bouquet blind lifts to reveal mirror underneath (mirror cracked), inside with neatly written 14-line poem; cover with light wear, **Very Fine and attractive**, a wonderful Valentine cover and enclosure, *ex-Kuphal*.  
Estimate. . . . . \$500 - 750
- 1004 ☒ (Connecticut) Woodbury, Ct., Feb 16, partial cds with matching "Due 1" rate handstamp on locally addressed cover, with original Valentine note and **large serrated hand painted heart shaped Valentine** with floral bordering with floral and heart motifs at center with various Valentine sentiments; cover with small edge tear, **Very Fine**, a wonderful hand drawn folk art Valentine.  
Estimate. . . . . \$300 - 400
- 1005 ☒ (District of Columbia) Washington, D.C., Feb 11, cds on red and blue "Pennsylvania, Ever True To The Union" banner patriotic cover to Columbia, Pa., matching "Due 3" handstamp and manuscript "Soldier Letter" and regimental endorsements, **Very Fine and choice**.  
Estimate. . . . . \$100 - 150
- 1006 ☒ (Florida) Saint Augustine, Fla., Feb 19, choice strike canceling on 1853, 3¢ Nesbitt entire to Hudson, N.Y. with "Via Charleston" endorsement, with **penny dreadful comical Valentine** titled "A Grocer"; small cover opening tear at top right corner, **Very Fine**.  
Estimate. . . . . \$100 - 150

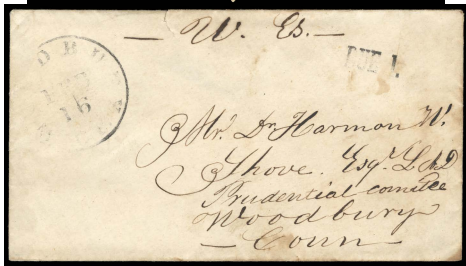




1001



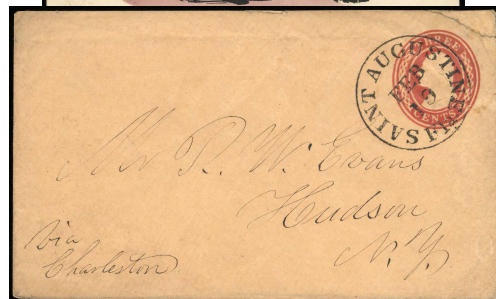
1002



1004



1005

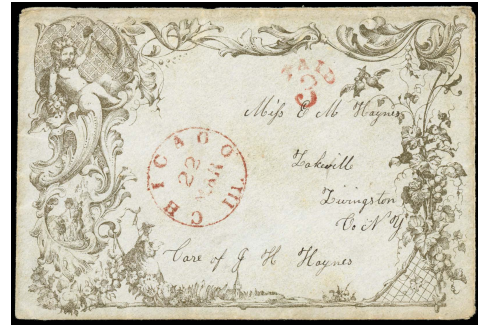


1006





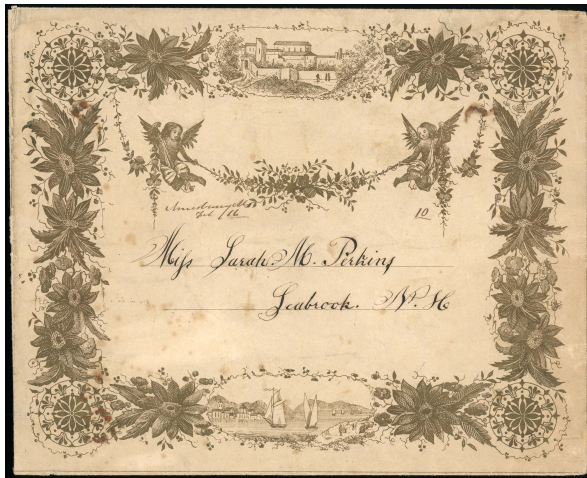
1009



1007



1008



1010

- 1007 ☒ (Illinois) Chicago, Ill., Mar 22, red cds with matching "Paid 3" handstamp on bronze ornate floral bordered Valentine cover showing **Cupid Holding Arrow with Strolling Couple Below**, addressed to Lakeville, N.Y. with all-over pattering on reverse; some light edge soiling, **Very Fine**.  
 Estimate. . . . . \$200 - 300
- 1008 ☒ (Louisiana) New Orleans, La., Feb 6, red cds with matching "Paid 6" rate handstamp, on floral bronze on white enamel Valentine cover to Cincinnati, O., with original oversized ornamental embossed Valentine with multicolored floral designs with verse below; cover and enclosure with some light edge soiling and staining, **F.-V.F.**  
 Estimate. . . . . \$200 - 300
- 1009 ☒ (Maryland) Elkton, Md., Feb 12, red cds with matching "5" rate handstamp on back flap of large blue floral and gold bordered Valentine cover to Strickersville, Pa., additional manuscript "5" rating on front; slight soiling, **Very Fine**.  
 Estimate. . . . . \$150 - 200

**Massachusetts**

- 1010 ☒ Amesbury, Ms, Feb. 16, neat manuscript postmark with matching "10" rating, on oversized brown floral Valentine cover showing **Cupid Holding Floral Banner and two View Scenes** at top and bottom, simple floral and border design on reverse, **Very Fine**, a very unusual Valentine cover design.  
 Estimate. . . . . \$200 - 300
- 1011 ☒ Ashburnham, Mass., Feb 14, clear Valentine's Day cds with matching "5" rate handstamp on oversized bronze ornamental bordered Valentine cover to Hubbardston, Mass., with ornate pierced Valentine with gold labels and central fold out to reveal a multicolored lithograph Gentleman and Lady View; cover reduced at top, missing backflap and edge erosion and stain at lower right, **F.-V.F.**  
 Estimate. . . . . \$150 - 200





1011



1012

- 1012 ☒ **Boston, 5cts, Feb 21**, red cds on gold ornate floral bordered Valentine cover to Dorchester, Mass., matching design on reverse, with original gold bordered Valentine enclosure with large illustrated forget-me-not card amid floral and dove embellishments at center, inside with hand written 14 line poem, **Very Fine**.  
 Estimate. . . . . \$200 - 300



- 1013 ☒ **Boston, 5cts, Feb 10**, red integral rate cds with matching "Paid" handstamp on bronze ornate floral bordered Valentine cover to Wiscasset, Me., with matching design on backflaps, **Very Fine**.  
 Estimate. . . . . \$200 - 300

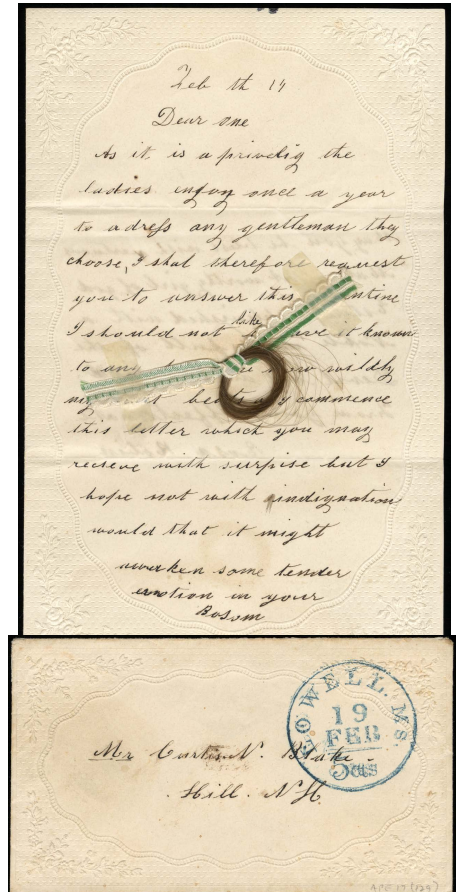




1014

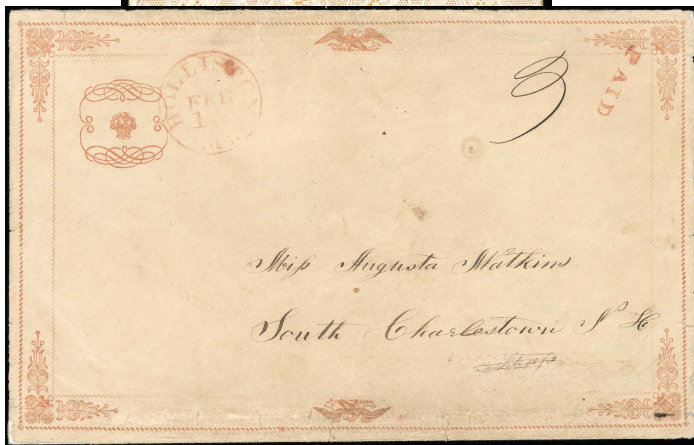


1015



1018





1016



1017

- 1014 ☒ **Boston, 10cts, Feb 17**, red cds on large gold and light blue floral bordered Valentine cover to Chaplin, Ct., with second smaller size locally addressed Valentine cover with matching border, with “Marblehead, N.H., Feb 16” cds and “Paid” handstamp; cover soiling and latter with couple tears at top, **F.-V.F.**  
 Estimate. . . . . \$200 - 300
- 1015 ☒ **(Dorchester, Mass.)**, locally addressed folded letter with manuscript “Drop 2” rating, opens to show printed floral and ornate border Valentine with central multicolored Women & Child Scene tipped in and 8-line poem; some contemporary notations on cover front, **F.-V.F.**  
 Estimate. . . . . \$150 - 200
- 1016 ☒ **Holliston, Ms., Feb 14**, red **Valentine’s Day** cds and matching “Paid” handstamp with manuscript “3” rating on red fancy typographed border Valentine cover to South Charlestown, N.H., with original pierced lace border Valentine with central motifs and 4-line poem and *Kershaw* maker’s imprint, reverse with hand written sentiment 1852 date; cover with small edge tears at bottom, **still Very Fine.**  
 Estimate. . . . . \$200 - 300
- It is interesting to note that the fancy scroll oval design, which frames a central floral bouquet at center, in the upper left corner matches the frame design (both in shape and color) as in the indicia of the Confederate Provisional entire from Walterborough, S.C. (Scott #108XU2).*
- 1017 ☒ **Lowell, Ms., 5, Feb 14**, red **Valentine’s Day** integral rate cds on bronze floral bordered Valentine cover to Canaan, N.H., with gold bordered Valentine enclosure with multicolored lithograph women and child scene and floral accents at center, **Very Fine.**  
 Estimate. . . . . \$200 - 300
- 1018 ☒ **Lowell, Ms., 5cts, Feb 19**, neat bold blue integral rate cds on small embossed bordered Valentine cover to Hill, N.H., with original matching border Valentine enclosure dated “Feb 14th”, with lengthy hand written poem and **green ribbon bound locket of hair, Extremely Fine and choice, ex-Haas.**  
 Estimate. . . . . \$300 - 400
- 1019 ☒ **(Lynn, Mass.)**, addressed hand delivered Valentine envelope, wonderful allover design in red, blue & yellow on a 6 x 4" envelope; missing backflap, **Very Fine and quite spectacular.**  
 Estimate. . . . . \$150 - 200

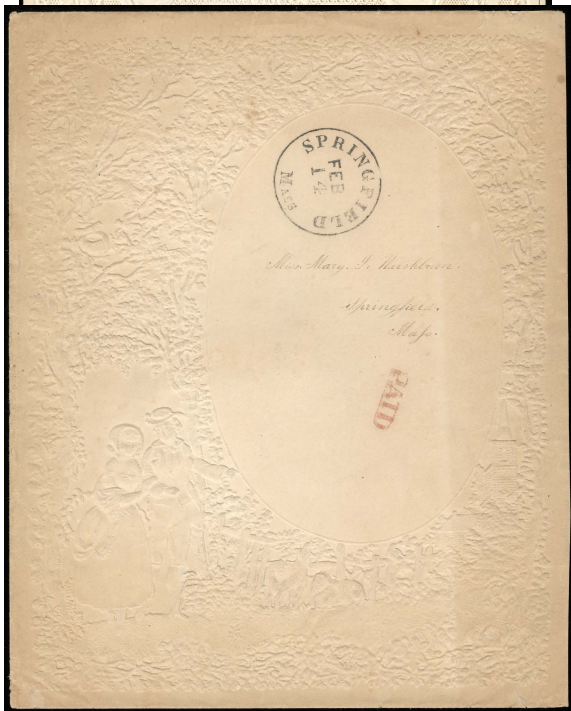




1019



1020

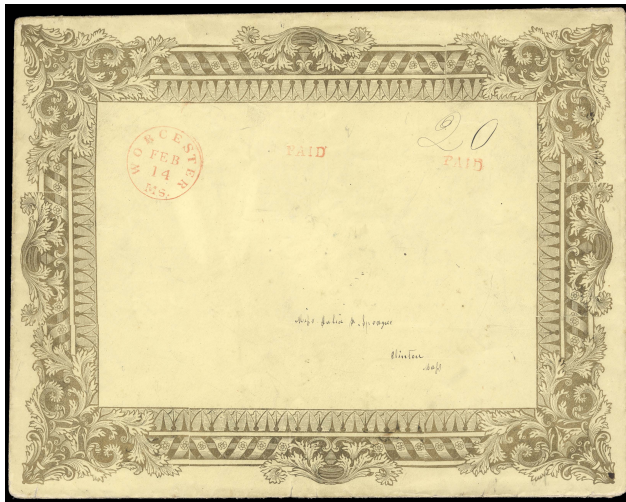


1022



1021





1023



1023 (Enclosure)



1024



1025

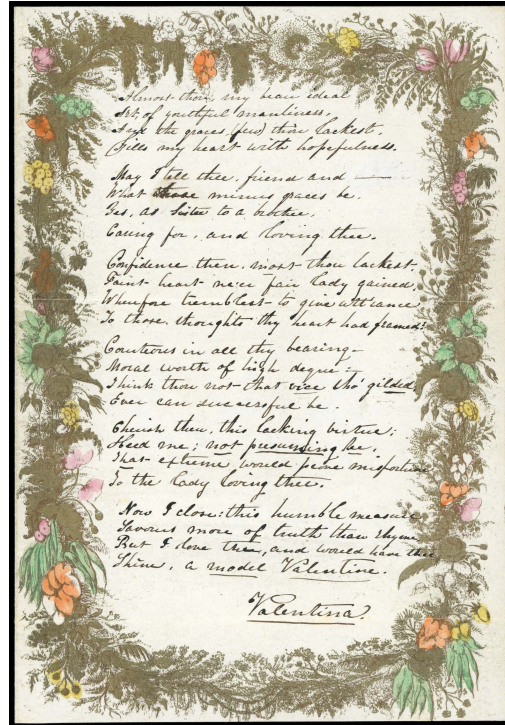
- 1020 ☒ **Malden, Mas., Feb 14**, red **Valentine's Day** cds with matching "5" rate handstamp on folded letter sheet to Wilbraham, Mass., manuscript "Valentine" endorsement at bottom left, with original printed and hand colored Valentine on enamel card with 18-verse poem with Cherub and Floral frame, **Very Fine**.  
 Estimate. . . . . \$150 - 200
- 1021 ☒ **Milford, Ms., Feb 12**, red cds with matching large "5" rate handstamp on gray floral and bronze bordered Valentine cover to Bradford, Mass., with original embossed Valentine enclosure and additional double heart "To / From" enamel card, **Very Fine**.  
 Estimate. . . . . \$200 - 300
- 1022 ☒ **Springfield, Mass., Feb 14**, clear Valentine's Day cds with red "Paid" handstamp on locally addressed illustrated embossed floral bordered Valentines showing **Young Couple and Sheep Scene**, with original ornate pierce paper Valentine enclosure with multicolored floral bouquet, dove with letter motifs and *Mansell* maker's imprint, hand written 8-line verse inside; cover with some light toning, **otherwise Very Fine**.  
 Estimate. . . . . \$200 - 300
- 1023 ☒ **Worcester, Ms., Feb 14**, red **Valentine's Day** cds with two strikes of matching "Paid" handstamp and manuscript "20" rate, on yellow ornate bronze border oversized Valentine cover to Clinton, Mass., with green and gold double embossed bordered Valentine with floral motif at center; cover with light edge wear and few tiny edge tears at bottom, **otherwise Very Fine**.  
 Estimate. . . . . \$300 - 400
- 1024 ☒ **(Michigan) Kalamazoo, Mic., Feb 12**, bold cds with matching "Paid" and "5" rate handstamp on bronze ornate bordered Valentine cover with Cupid at upper left, to Mattawan, Mich., with original paper lace Valentine enclosure with Floral accent (couple others missing) and *Mansell* makers imprint, inside with separate lady and gentlemen lace bordered figures and hand written note datelined "Feb 14, 1851", **Very Fine**.  
 Estimate. . . . . \$200 - 300



The Valentine's Day Sale

- 1025 ☒ (New Hampshire) Fisherville, N.H., Feb 16, blue cds with matching "Paid" and "3" in circle rate handstamps on gold ornamental bordered Valentine cover to London, N.H., with original embossed and colored bordered Valentine with hand painted floral heart with forget-me-not at center and silver doves below, **Very Fine**.  
 Estimate. . . . . \$150 - 200

*Interesting to note that this cover bears a very small "2" handstamp in upper left corner indicating sale price of cover and the Valentine enclosure bearing a matching "12½" price as well.*



- 1026 ☒ (New Hampshire) Portsmouth, N.H., Feb 14, blue cds and matching "5" on gold gilt ornamental envelope to Boston; included is original handwritten six-verse Valentine poem signed "**Valentina**" with a beautiful gold gilt and hand tinted border, **Extremely Fine**.  
 Estimate. . . . . \$400 - 600

A SPECTACULAR ITEM OF GREAT BEAUTY.

- 1027 ☒ (New Jersey) Jersey City, N.J., Feb 19, blue cds with matching tiny "2" rate handstamp at upper right on local street addressed oversized brown bordered Valentine cover with floral scroll address panel, matching pieced lace border Valentine enclosure with floral embellishments and gold scroll sentiment at center, **Very Fine, ex-Haas**.  
 Estimate. . . . . \$300 - 400

- 1028 ☒ (New Jersey) Trenton, N.J., Feb 15, blue cds with matching "Paid" and fancy large hollow "5" rate handstamps in fresh oversized cover to Flemington, N.J., original black and blue embossed floral border Valentine enclosure with motifs including bird holding small envelope which opens to reveal five different forget-me-nots, Cupid, floral banner and 4-line poem in scroll, **Very Fine and attractive**, a wonderful Valentine cover and enclosure.  
 Estimate. . . . . \$400 - 600

New York

- 1029 ☒ Brooklyn, N.Y., Feb 14, red Valentine's Day cds with matching "Paid" and "2" rate handstamp on locally addressed ornate pierced laced Valentine cover, with matching embossed Valentine enclosure with hand painted floral motif, hand written 4-line poem and *Dobbs* maker's imprint, dated "Feb 14/48"; cover minor lace nick at upper left, **Very Fine**.  
 Estimate. . . . . \$200 - 300

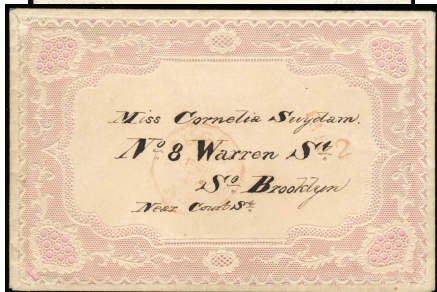
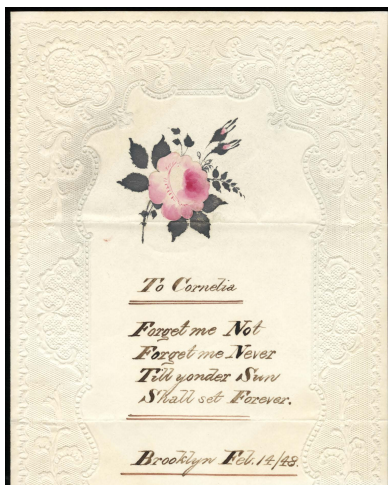
- 1030 ☒ Brooklyn, N.Y., Feb 14, bold Valentine's Day cds with matching "1 Cent" rate handstamp on locally addressed embossed bordered cover, with original embossed bordered Valentine with gold framed lady & gentlemen view at center with 4-line poem below, inside with handwritten 8-line poem; cover with some tone spots, **otherwise Very Fine, ex-Haas**.  
 Estimate. . . . . \$150 - 200





1027

1028



1029



1030



## The Valentine's Day Sale

- 1031 ☒ **Jackson Corners, Dutchess Co. (N.Y.)**, addressing on ornate bronze floral bordered Valentine cover, with red "Paid" handstamps on all four sides with manuscript "5" rating at top, with original embossed Valentine enclosure with diamond forget-me-nots, multicolored floral embellishments, silver "Look At My Beloved" pulled up frame to reveal mirror (mirror missing) and hand written verses at sides, inside with additional hand written 8-line poem, **Very Fine**.  
 Estimate. . . . . \$200 - 300
- 1032 ☒ **New York, 2, Feb 16**, red integral rate cds on fresh locally street addressed bronze ornate border and floral scroll Valentine cover, with pierced lace bordered Valentine with multicolored lithograph lady & gentlemen view, "Sweet Heart" 8-line poem below and *Kershaw* maker's imprint, **Very Fine and choice, ex-Kuphal**.  
 Estimate. . . . . \$250 - 350
- 1033 ☒ **Philadelphia, N.Y., Feb 14**, blue oval date stamp with fleurons and manuscript **Valentine's Day** date, on leaf embossed bordered Valentine cover to Theresa, N.Y., matching "5" rate handstamp, with original matching bordered Valentine page with multicolored Bird on Branch illustration and hand written 16-line poem, **Very Fine**.  
 Estimate. . . . . \$200 - 300
- 1034 ☒ **(Rensselaerville, N.Y.)**, address on oversized gold floral bordered Valentine cover, with red "Paid" and "10" rate handstamps, no townmark, with pierced lace Valentine with floral arrangement center, **Very Fine, ex-Haas**.  
 Estimate. . . . . \$200 - 300



- 1035 ☒ **Rhinebeck, N.Y., Feb 16**, neat cds on fresh locally addressed gold floral bordered Valentine cover, with original gold gilded embossed floral border Valentine with frame enamel sentiment card at center and additional hand written 4-line poem below, **Extremely Fine**, an exceptional Valentine cover and enclosure, *ex-Haas*.  
 Estimate. . . . . \$300 - 400
- 1036 ☒ **(Schenectady, N.Y.)**, addressing on large gold floral bordered Valentine cover, with red "V" over "Feb 14" Valentine's Day date stamp at upper left and matching "Paid" and small "5" rate handstamp at upper right, with ornate pierced lace Valentine with silver and floral embellishments and central embossed women's portrait at center, **Very Fine**, a very unusual "V" Valentine's Day postmark.  
 Estimate. . . . . \$250 - 350
- 1037 ☒ **(Utica, N.Y.)**, small locally addressed cover with blue "2" rate handstamp, reverse with silver lined backflaps and small "Acceptez" forget-me-not, with original enclosure with gold ornate flourishes with central hand painted flowers, hand written 5-line poem datelined "Feb 14th, 1848", **Very Fine**.  
 Estimate. . . . . \$100 - 150





1031



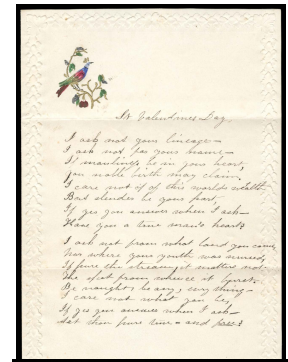
1031 (Enclosure)



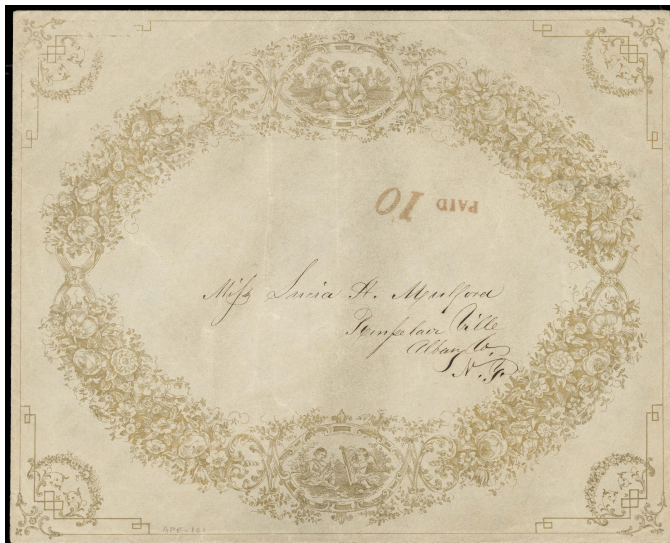
1032



1032 (Enclosure)



1033



1034



1034 (Enclosure)

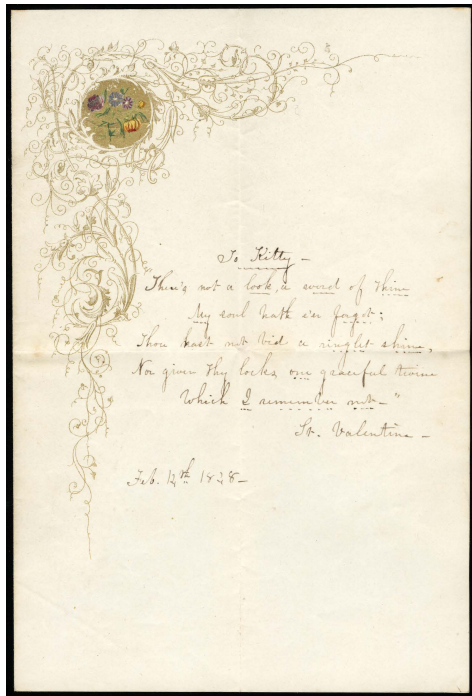




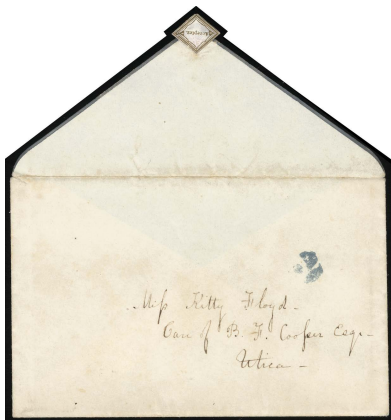
1036



1036 (Enclosure)



1037



1038





1040



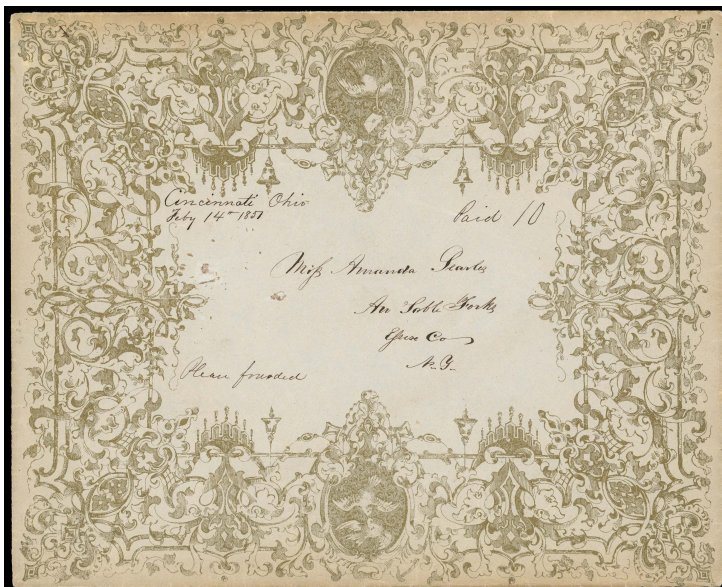
1040 (Enclosure)



1039



1042



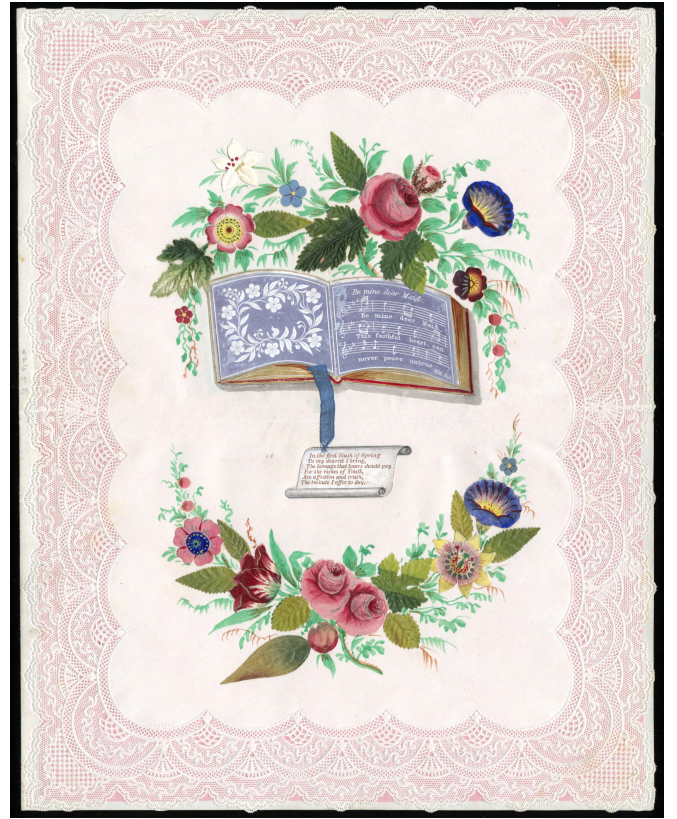
1041







1043



1043 (Enclosure)



1045 (Enclosure)



1045



1044





1046



1046 (Enclosure)

- 1038 ☒ **Utica, N.Y., Feb 15**, fancy blue oval date stamp with matching “Paid” in scroll and “X” in double circle rate handstamps on large cover to Binghamton, N.Y., with shaded ornate embossed bordered Valentine with gold bordered enamel sentiment with floral embellishments, manufactured by *Kershaw*, **Very Fine and choice**, a stunning valentine enclosure in perfect condition.  
Estimate. . . . . \$300 - 400
- 1039 ☒ **(Watkins, N.Y.)**, ca. 1840’s floral ornamental embossed Valentine cover locally addressed with blue “Paid” handstamp, with original matching Valentine enclosure with embossed Lady & Gentlemen figures amid floral bordering, central honeycomb lace center with gold Cupid, inside with printed enamel 4-line poem; light cover corner staining and slightly reduced at right, **F.-V.F.**  
Estimate. . . . . \$100 - 150
- 1040 ☒ **(Ohio) Cincinnati, O., Feb 14**, red **Valentine’s Day** cds with matching **Paid** handstamp and pencil “2” rate alongside, on oversized bronze floral bordered Valentine cover showing Cherub Views at top and bottom, locally addressed, with pierced floral bordered Valentine with multicolored flower flourishes around beehive pull up (mostly pulled away) revealing Cupid at center, **Very Fine**.  
Estimate. . . . . \$200 - 300
- 1041 ☒ **(Ohio) Cincinnati, Ohio, Feby 14th, 1851**, neat manuscript postmark with matching “Paid 10” rate, on oversized **ornate gold floral bordered Valentine cover with Dove motifs** including one with letter hanging around neck, to Au Sable Forks, N.Y., matching allover floral bordered design on reverse, **Very Fine and choice**.  
Estimate. . . . . \$250 - 350
- 1042 ☒ **(Ohio) Cleveland, O., Feb 14**, discernible “Valentine’s Day” cds with matching “5” rate handstamp on embossed ornamental bordered Valentine cover to Newark, O., with *Addenbrooke* maker imprint, folded embossed bordered lithograph Valentine with multicolored floral and dove design and 10-line poem at center, **Very Fine**.  
Estimate. . . . . \$200 - 300
- 1043 ☒ **(Ohio) Dayton, O., Feb 14**, blue **Valentine’s Day** cds with matching “Paid” handstamp and manuscript “30” triple rating on oversized cover to Suffield, Conn., original pieced lace border Valentine enclosure with floral accents, enamel music book and 4-line poem on scroll central motifs and *Mansell* maker’s imprint, inside with tipped in hand written 8-line poem, **Very Fine with a stunning valentine enclosure**.  
Estimate. . . . . \$300 - 400
- 1044 ☒ **(Ohio) Warren, O., Feb 20**, clear strike of blue cds with matching “Paid” & “5” handstamps on lovely allover bronze ornamental Valentine envelope showing **Lady & Cupid With Letters**, addressed to Twinsburgh, O., **Very Fine**.  
Estimate. . . . . \$150 - 200
- 1045 ☒ **(Pennsylvania) Ercildoun, Pa., Feb 16**, red cds with matching “Paid 3” in circle handstamp on gold ornate floral bordered Valentine with hand colored floral scroll at center, to Lancaster, Pa., with illustrated pierced paper lace Valentine enclosure with cherub and dove allegories and *Berlin & Jones* maker’s imprint, inside with printed 4 line verse on gold bordered card amid floral scroll work matching cover design; cover with faint toning at center, **Very Fine and attractive**.  
Estimate. . . . . \$200 - 300
- 1046 ☒ **(Pennsylvania) Harrisburg, Pa., Feb 15**, blue cds with matching “2” rate handstamp on locally addressed bronze Valentine cover showing Cupid and cherub amid floral border, with original pierced paper lace Valentine enclosure with multicolored floral motifs and manuscript sentiment at center and *Mansell* maker’s imprint, **Very Fine**.  
Estimate. . . . . \$200 - 300



## The Valentine's Day Sale

- 1047 ☒ **(Pennsylvania) (Philadelphia, Pa.)**, cover locally addressed to "Paul St., Below Green" with manuscript "2" rate, with bronze ornate illustrated Valentine design showing **Lady Reading Letter and Cherub Allegories**, reverse with ornate design showing lady & gentleman portraits, cherubs and arrow pierced hearts, **Very Fine and choice**; with 2015 P.F. certificate.  
Estimate. . . . . \$300 - 400
- 1048 ☒ **(Pennsylvania) (Pottsville, Pa.)**, locally addressed cover with red "2" rate handstamp, with original Valentine enclosure with printed Lady & Gentlemen Scene, multicolored floral motif, enamel 4-line poem in scroll and hand written sentiment, **Very Fine**.  
Estimate. . . . . \$100 - 150
- 1049 ☒ **(Pennsylvania) West Philada., Pa., Feb 15**, cds with manuscript "Drop 2cts" on locally addressed folded letter sheet with pencil 1847 year date, with original blue flora and Cupid border Valentine with 6-line poem below and moth on honeycomb pull up reveal lady portrait, also newspaper "Married" notice clipping, **Very Fine**.  
Estimate. . . . . \$150 - 200



1050

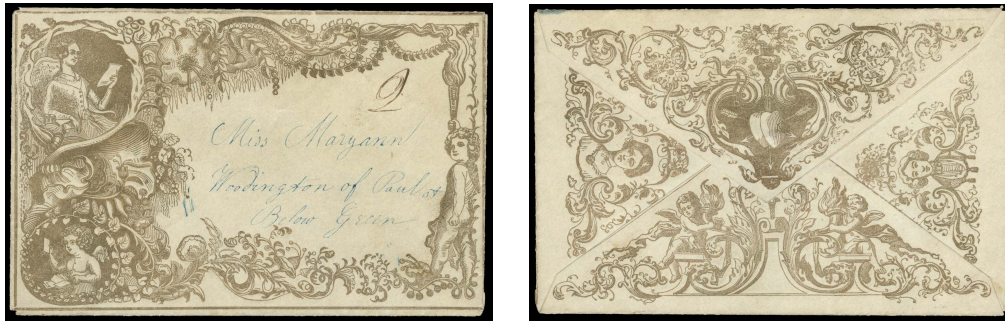


1052

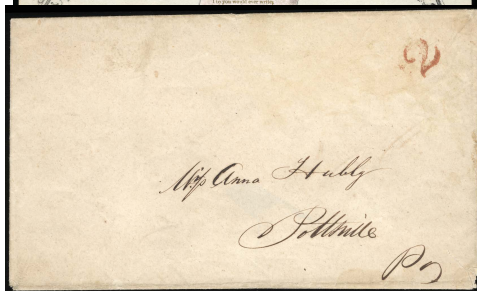


- 1050 ☒ **(Pennsylvania) Westchester, Pa., Feb 14**, blue cds and matching rate "10" ("1" inverted) on **gold gilt Valentine envelope** to Geigers Mills Pa., with large sticker-embellished lace Valentine enclosure; cover top flap missing, **Extremely Fine and attractive**.  
Estimate. . . . . \$400 - 600
- 1051 ☒ **(Rhode Island) Pawtucket, R.I., Feb 15**, bold red cds with matching "5" rate handstamp on embossed honeycomb bordered Valentine cover to Trinity College in Hartford, Ct., with original embossed floral border Valentine page with hand written 12-line poem dated "Feb 14th, 1848", **Very Fine**.  
Estimate. . . . . \$200 - 300
- 1052 ☒ **(Rhode Island) (Woonsocket, R.I.)**, locally addressed ornate embossed bordered Valentine cover with blue "Paid" handstamp at center and *Kershaw* makers imprint, with original ornamental bordered Valentine with hand painted floral flourishes, quiver of arrow and bow at top with gold bordered enamel design at center, hand written verse below, **Very Fine and choice**, a wonderful cover and matching enclosure.  
Estimate. . . . . \$400 - 600
- 1053 ☒ **(Vermont) East Bethel, Vt.**, manuscript "Drop Paid 1" on locally addressed **bronze floral bordered Valentine cover**, matching design on reverse, with pierced lace Valentine enclosure with central Cupid design; minor edge toning at bottom right, **Very Fine**.  
Estimate. . . . . \$150 - 200





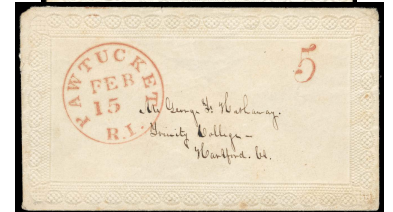
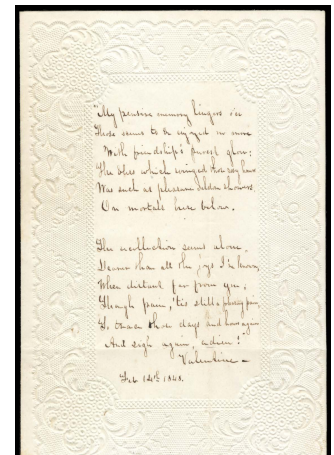
1047



1048



1049



1051

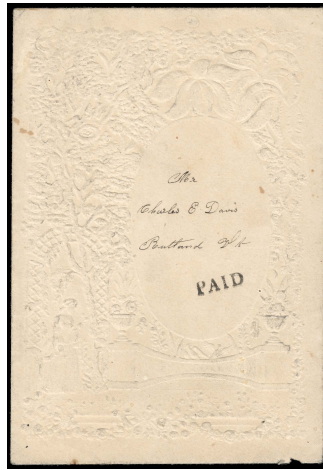
- 1054 ☒ (Vermont) Newbury, Vt., Feb 22, choice strike of red cds with black "Paid" and "6" rate handstamps on ornate embossed bordered Valentine cover to Wilmot Flat, N.H., with matching pierced lace Valentine enclosure with gold birds & nest, matching framed mirror (not cracked), multicolored floral motif at center and *Kershaw* maker's imprint, **Very Fine and choice**, a lovely Valentine and enclosure. Estimate. . . . . \$300 - 400
- 1055 ☒ (Vermont) (Rutland, Vt.), locally addressed embossed Valentine cover showing **Women Under Arched Trelice and Floral Border** and bold "Paid" handstamp, with matching floral embossed bordered Valentine enclosure with multicolored lithographed **Women Reading Letter** with 4-line poem below; minor cover edge nick, **Very Fine**. Estimate. . . . . \$150 - 200
- 1056 ☒ (Virginia) Winchester, Va., Feb 23, cds with matching "Paid 3" in circle handstamp on large embossed **Valentine cover** showing **Women Under Arched Trelice and Floral Border**, with ornate embossed enclosure colored in silver on a pink background (matching cover design) with additional gold and multicolored labels; light cover fold and some tiny tone spots, **F.-V.F., ex-Kuphal**. Estimate. . . . . \$200 - 300



The Valentine's Day Sale



1053



1055



1055 (Enclosure)



1054



1054 (Enclosure)



1056



1056 (Enclosure)



1057



Valentines - Postmasters' Provisionals

- 1057 ☒ **New York, N.Y., 1846, 5¢ Black on Bluish, Signed "ACM", "AC" Connected**, margins large to a bit in at right, tied by blue pen cancel on folded letter to New Haven, Ct., with red "New York, 5 cts., Feb 13" Valentine's eve cds and red arched "Paid" handstamp, with docketing at left reading "Received of the 14th February 1846, or Valentine's Day"; some docketing manuscript on stamp, **F.-V.F.**  
 Scott No. **9X1a** . . . . . Estimate \$200 - 300

Valentines - Regular Issues



- 1058 ☒ **5¢ Red Brown, Three Singles**, all clear to large margins, slightly overlapping on **oversized silver ornamental bordered Valentine cover** to South Dedham, Mass., canceled by grid handstamps with red "Boston, Mass., Feb 27" cds and matching "Paid" handstamp at top, stamps tied by red crayon with additional "Paid 5" and "20" total rating (for 15¢ franking plus 5¢ paid in cash), **Very Fine and choice**, *ex-Wenk, Boker & Gross*.  
 Scott No. **1** . . . . . Estimate \$5,000 - 7,500

A MAGNIFICENT MULTIPLE USAGE OF THE 1847 5¢ ISSUE ATTEMPTING TO PAY THE OLD TRIPLE RATE ON A VALENTINE DURING THE "NO TRIPLE RATE" 1849-51 RATE CHANGE.

*At the advent of the 1847 Issue, the Act of March 3rd 1847 (and effective July 1st) modified the rate for the distance under 300 miles at 5¢ per half ounce and adding one rate for each additional ounce. This triple rating was eliminated by the Act of March 3rd 1849 where letters weighing over a half ounce to one ounce were charged the double rate and two additional rates for each succeeding ounce or fraction thereof.*

*Reverse of cover notated and signed by Stanley Ashbrook (in pencil and dated Oct. 21, 1954) reading... "In my opinion this cover is genuine in all respects. It shows the no triple rate of 1849-1851 and is the finest example of that rate I have ever seen."*





1059 ☒ **5¢ Red Brown**, ample to mostly large margins, neatly tied by blue grid handstamp with two matching strikes of “Northern R.R., Feb 14” route agent cds on **allover Robin’s egg blue floral and bronze bordered Valentine cover** to Sutton, N.H., reverse with matching allover design and forget-me-not label; small cover tear at bottom and some trivial toning, **Very Fine**, *ex-Meroni, Matthies, Kapiloff, Boker & Gross*.

Scott No. **1** . . . . . Estimate \$3,000 - 4,000

A WONDERFUL AND VERY RARE MULTICOLORED VALENTINE COVER BEARING THE 1847 5¢ ISSUE AND VALENTINE’S DAY RAILROAD POSTMARKS.



1060 ☒ **5¢ Red Brown**, ample to large margins, trivial minute margin nick at bottom right, tied by red “St. Louis, Mo., 5, Feb 16” integral rate cds with second strike at left on **intricate bronze Valentine** with allover floral and scroll designs, to Cathage, Ill., matching allover designs on reverse showing pen & scroll and arrow & harp illustrations; cover opened for display with a few light tone spots, **Very Fine**, illustrated in Baker Baker’s *U.S. Classics* (page 176), *ex-Weill, Boker & Gross*; with 1966 P.F. certificate.

Scott No. **1** . . . . . Estimate \$3,000 - 4,000

A WONDERFUL VALENTINE COVER AND 1847 5¢ ISSUE COMBINATION.





1061 ☒ **5¢ Red Brown**, margins large to just touching, rich color, tied by manuscript "X" on fresh large **ornate bronze floral border and scroll address panel Valentine cover** to Geiger's Mills, Pa., with light blue "West Chester, Pa., Feb 14" cds at lower left, with matching matching floral bordering on reverse, **Very Fine**, a wonderful well preserved Valentine cover and 1847 5¢ issue usage; with 2015 P.F. certificate. Scott No. **1** . . . . . Estimate \$1,500 - 2,000



1062 ☒ **5¢ Red Brown**, clear to large margins, rich color, tied by blue "Concord, N.H., Feb 14" **Valentine's Day** cds on cover to Hanover, N.H., reverse with small forget-me-not label on back flap, **Very Fine and choice**. Scott No. **1** . . . . . Estimate \$400 - 600



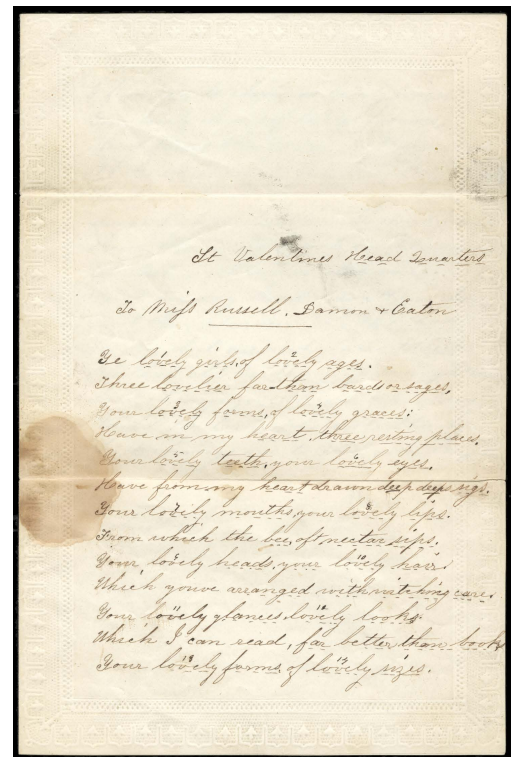


1063 ☒ **5¢ Red Brown**, ample to large margins and rich color, couple light creases, tied by red square grid handstamp on bronze floral bordered **Valentine cover** to Williamsburg, N.Y., matching "New York, Feb 15" cds and "Paid" handstamp; cover with a couple small edge tears, **Very Fine appearance.**  
Scott No. **1** . . . . . Estimate \$400 - 600





1064 ☒ **5¢ Red Brown**, clear to huge margins, tied by red square grid handstamp on **bronze floral border Valentine cover** to Northcastle, N.Y., matching "New York, Feb 19" cds; light cover soiling and staining, **Fine**.  
 Scott No. **1** . . . . . Estimate \$300 - 400



1065 ☒ **5¢ Red Brown**, clear to large margins, tied by red grid handstamp on embossed bordered Valentine cover to Woodstock, Vt., matching red "Norwich, Vt., Feb 14" **Valentine's Day** cds, with original lengthy handwritten poem; cover with soiling and corner flaws at right, **Fine**.  
 Scott No. **1** . . . . . Estimate \$200 - 300





1066 ☒ **10¢ Black, Two Singles**, both with with large margins around to just shaving frameline at bottom, tied by red square grid cancels on oversized bronze floral ornamental Valentine cover to Lakeville, N.Y., matching "New York, Feb 18" cds and pencil "20" rating at left, with original ornamental lace Valentine enclosure with multicolored floral accents and central gold frame lady portrait design; cover and enclosure with fold, cover with some edge wear and slight splitting along folds, **Very Fine**, a rare double rate Valentine cover sent over 300 miles and franked with the 1847 10¢ issue, *ex-Pope, Garrett, Boker & Gross*; with 1985 P.F. certificate. Scott No. 2. . . . . Estimate \$7,500 - 10,000

A REMARKABLE DOUBLE RATE VALENTINE COVER FRANKED WITH THE 1847 10¢ ISSUE - CONSIDERED TO BE THE FINEST VALENTINE USAGE OF THE 1847 ISSUE.





1067 ☒

**1¢ Blue, Types I & IIIa, Vertical Pair**, positions 7//17R1E, margins large to just touching scrolls at upper left (5) and bottom left (8A), on **oversized bronze floral bordered Valentine cover** to Miss Eunice M. Chittenden in Westbrook, Ct., in combination with **1851, 1¢ blue, type Ib** (5A, position 3R1E) affixed to end of backflap and manuscript canceled, and **1851, 3¢ dull red, type II, three singles** (11A) tied with pair by neat "Deep River, Ct., Feb 12" cds's all paying four times the 3¢ domestic rate, with embossed ornamental Valentine enclosure with multicolored woodblock print and decoupage floral accents around small embossed envelope holding an enamel card with four-line poem; cover with some edge soiling and a few tone spots, 1¢ stamps - type I with small bottom left corner repair from scuff, type IIIa with small margin scuff and corner crease at bottom right, and type Ib with nick and large sealed tear, **Very Fine appearance**, *ex-Dr. Hubert C. Skinner* (acquired from the Weill Brothers).; with 2005 P.F. certificate. *See website for Valentine enclosure.*  
 Scott No. **5,8A** . . . . . Estimate \$40,000 - 60,000

THE MOST REMARKABLE AND UNIQUE EXAMPLE OF THE 1851 1¢ TYPE I ISSUE IN A PAIR AND WITH TWO OTHER 1¢ TYPES ON A VALENTINE - A TRULY MAGNIFICENT USAGE AND ONE OF THE MOST QUINTESSENTIAL 1851 ISSUE COVERS IN EXISTENCE.

*Dr. Hubert C. Skinner acquired this cover from the Weill Brothers and had been off the market for over 50 years. Dr. Skinner eventually made the cover a subject of an ongoing article in November 1994 edition The Chronicle (pages 245-250) entitled "Quintessential Covers: Part III".*

*Jerome S. Wagshall's census of position 7R1E lists this cover as no. 5-COV-080 and is one of only twenty three cover recorded. Of the eleven examples in multiples, this is the only example in combination with any other denomination of the 1851 issue.*





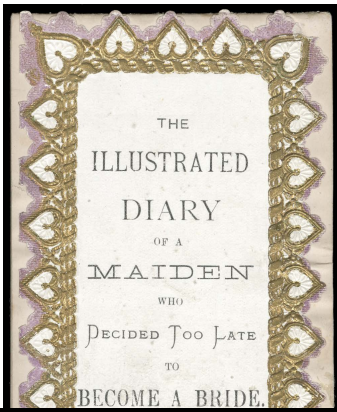
- 1068 ☒ **1¢ Blue, Type II, Two Singles**, left stamp with a couple tiny pre-use tears, tied by grid handstamp with matching **Millpost, N.Y., Feb 14** Valentine's Day cds on **oversized embossed floral and ornamental border Valentine cover**, locally addressed, with lovely original pierced lace border Valentine enclosure with flora and bird designs around central enamel envelope holding enamel cards with 4-line poem, with additional tipped in lengthy 24-line handwritten poem dated "Feb 14th 1852"; some light cover spotting and enclosure in immaculate condition, **Very Fine**, with pencil notation on reverse of cover...*"published by Esther Howland, Worcester, Mass."*, *ex-Haas*.  
 Scott No. 7 . . . . . Estimate \$400 - 600



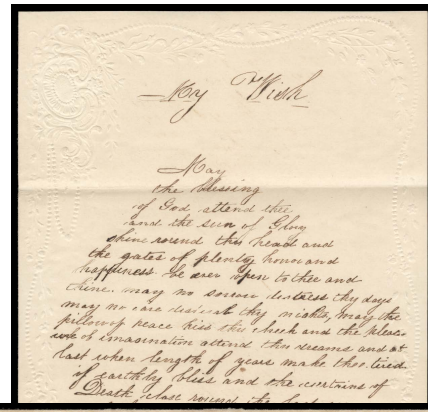
- 1069 ☒ **1¢ Blue, Type II**, margins large to slightly in at upper left, tied by "Franklin, N.H., Feb 27" cds with second strike at center of ornate gold border Valentine cover locally addressed, with matching design on reverse, with original elaborate gold bordered Valentine enclosure with floral accents, matching border frame inside with personal note tipped in, **Very Fine**, a lovely Valentine and enclosure; with 1985 P.F. certificate.  
 Scott No. 7 . . . . . Estimate \$400 - 600

- 1070 ☒ **1¢ Blue, Type II**, canceled by bar handstamp on fresh locally addressed Allegheny City, Pa. gold floral bordered Valentine cover, matching bordered backflaps, with unusual 12 page **Vinegar Valentine** entitled "**The Illustrated Diary of a Maiden Who Decided Too Late to Become a Bride**" on glazed enamel with gold and lavender heart bordering, with six humorous caricatured multicolor illustration each with satirical poem, **Very Fine and unusual**.  
 Scott No. 7 . . . . . Estimate \$300 - 400





1070



1072



1071



1071 (Enclosure)

- 1071 ☒ **1¢ Blue, Type II, Horizontal Pair**, margins large to just in at top, tied by bold blue “Moosup, Ct., Feb 14” Valentine’s Day cds on oversized embossed floral bordered Valentine cover to Voluntown, Ct., pierced lace Valentine with gold Cupid and floral embellishments and central lace envelope holding scroll sentiment inside; some light cover staining, **F.-V.F.**  
 Scott No. 7 . . . . . Estimate \$250 - 350
- 1072 ☒ **1¢ Blue, Type II**, fine single with rich color, tied by blue “Baltimore, Md., Feb 14, 1857” Valentine’s Day cds on embossed illustrated ornamental bordered Valentine cover with Bird and Angel allegories, locally addressed with additional manuscript 18 on stamp, original matching Valentine sheet with embossed floral border and hand written verse, **Very Fine.**  
 Scott No. 7 . . . . . Estimate \$150 - 200
- 1073 ☒ **1¢ Blue, Type II**, margins large to just touching, penciled canceled on fresh bronze ornate bordered Valentine locally addressed in Elmira, N.Y., with similar design on reverse, **Very Fine.**  
 Scott No. 7 . . . . . Estimate \$150 - 200





- 1074 ☒ **1¢ Blue, Type IIIa, Horizontal Pair**, at upper left in combination with **1851, 1¢ blue, type II, horizontal pair and two singles (7)** neatly arranged in other corners on oversized **gold floral border Valentine cover** to East Glouster, Me., canceled and tied by grid handstamps with red "New Orleans, La., Feb 11" cds, reverse with cover with matching allover ornate gold design and forget-me-not label; lower right stamp with small scoring line at bottom, **Very Fine**, illustrated in Brookman *The Nineteenth Century Postage Stamps of the United States, Volume 1* (page 121), *ex-J. Jones & Kramer*.  
 Scott No. **8A** . . . . . Estimate \$4,000 - 6,000

A MAGNIFICENT OVERSIZED GOLD FLORAL VALENTINE USAGE BEARING A DOUBLE RATE FRANKING OF THE 1851 1¢ ISSUE FROM PLATE ONE EARLY.



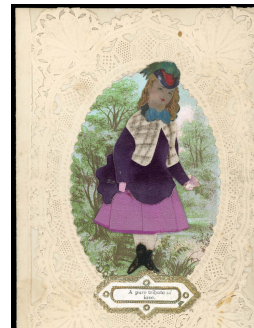
- 1075 ☒ **1¢ Blue, Type IV**, small tear at right (due to canceling device), tied by bold "Troy, N.Y., Feb 20, 1857" cds on **heavily embossed floral bordered Valentine cover with various elements hand colored**, locally addressed, with white and gold floral bordered Valentine enclosure with multicolored floral elements and central heart design, printed 8-line verse inside; cover with some light staining and tone spots, **F.-V.F.**, a wonderful multicolored Valentine and elaborate enclosure, *ex-Kuphal*.  
 Scott No. **9** . . . . . Estimate \$750 - 1,000





1076

1078



1073

1077

- 1076 ☒ **1¢ Blue, Type IV**, fine single tied by “Troy, N. Y., Mar 15” cds on large enamel **Valentine cover** with ornate bronze floral and address panel scroll design bearing multicolored floral design, locally addressed, with matching overall design on reverse, with pierced lace floral Valentine enclosure with central multicolored floral and lady designs, inside with tipped in 4-line poem, **Very Fine and choice**, an exceptional multicolored enamel Valentine cover, *ex-Kuphal*.  
Scott No. 9 . . . . . Estimate \$750 - 1,000
- 1077 ☒ **1¢ Blue, Type IV, Recut Once at Top and Twice at Bottom**, position 23R1L, margins large to just touching at bottom left, tied by neat bold “New Haven, Con., Feb 16, 1857” cds on locally addressed embossed Valentine cover showing **Women Under Arched Trelice and Floral Border**, with matching Valentine ornate lace enclosure with multicolored nature background and **Young Lady with Attire made from Felt and Silk** with verse below, **Very Fine and choice**, a wonderful cover and enclosure combination, *ex-Vogel*.  
Scott No. 9 . . . . . Estimate \$500 - 750
- 1078 ☒ **1¢ Blue, Type IV**, large margins to just shaving at bottom, small corner creases at top, tied by “Marion, Ind., Feb 13” cds on **large ornate bronze border and floral Valentine cover**, locally addressed, with Valentine enclosure with lattice work lover’s scene, multicolored floral designs and verse; some light edge wear, **Very Fine**.  
Scott No. 9 . . . . . Estimate \$400 - 600





- 1079 ☒ **1¢ Blue, Type IV, Three Singles**, each with rich color with margins to slightly in, tied by two strikes of “Andover Mass. Feb 12” cds, right two with additional manuscript “X” cancels, on **large embossed valentine envelope** to Haverhill Mass., additional strike of cds and matching “10” handstamp and manuscript “Due” at top left, included **large embossed Valentine enclosure** with multicolored flowers and small oval mirror (cracked), **Very Fine**.  
 Scott No. **9** . . . . . Estimate \$400 - 600

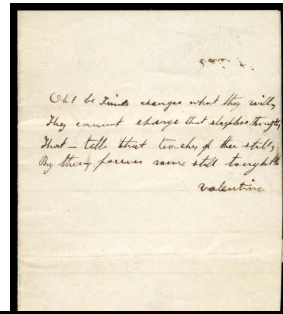


- 1080 ☒ **1¢ Blue, Type IV, Recut Once at Top and Once at Bottom**, position 44L1L, margins large to clear at top, rich color, tied by “Holliston, Ms., Feb 26” cds on locally addressed highly ornate embossed floral and love bird Valentine cover, with lace Valentine enclosure with gold Cupid and multicolored floral motifs, 8-line printed poem and couple view inside; cover with internal breaks in embossing at top left, **still Very Fine, ex-Vogel**.  
 Scott No. **9** . . . . . Estimate \$400 - 600

- 1081 ☒ **1¢ Blue, Type IV**, tied by “Detroit, Mich., Feb 14” Valentine’s Day cds on **large elaborate ornamental embossed Valentine cover** locally addressed, with embossed border Valentine enclosure with hand colored **Clerk at Desk caricature** and 6-line satirical poem below; cover with some minor tone spots, **Very Fine, ex-Kuphal**.  
 Scott No. **9** . . . . . Estimate \$300 - 400

- 1082 ☒ **1¢ Blue, Type IV**, margins large too slightly in at bottom right, tied by light “Manchester, N.H., Feb 13” cds on locally addressed ornate bronze bordered Valentine cover with matching design in reverse, embossed bordered Valentine with central dove and sentiment motifs and hand painted floral accents, **Very Fine**.  
 Scott No. **9** . . . . . Estimate \$300 - 400





1081



1083



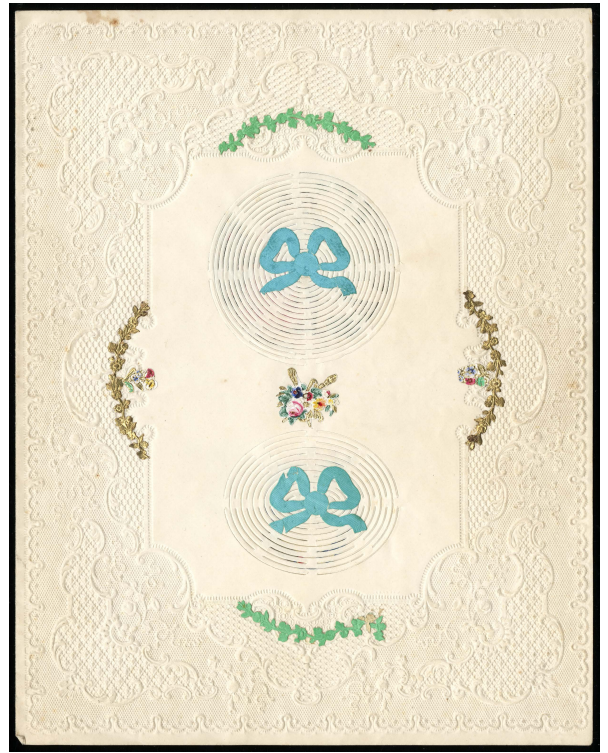
1082 (Enclosure)



1082

1083 ☒ **1¢ Blue, Type IV**, clear to large margins, manuscript canceled on small embossed black ornamental illustrated bordered Valentine cover with Cherub and Love Doves at sides, locally addressed in Hayesville, O., with small hand written 4-line Valentine poem, **Very Fine**. Scott No. 9 . . . . . Estimate \$200 - 300





- 1084 ☒ **1¢ Blue, Type IV**, slightly clipped and toned bottom left corner, tied by "Castine, Me., Feb 14" **Valentine's Day** cds on oversize embossed bordered Valentine cover locally addressed, with embossed bordered Valentine enclosure with floral accents around **two beehive pull ups** to reveal lady & gentlemen scene and a 4-line poem; cover with even toning and some edge wear, **F-V.F.**  
 Scott No. **9** . . . . . Estimate \$200 - 300



- 1085 ☒ **1¢ Blue, Type IV, Left Margin Horizontal Pair**, positions 31-32L1L, ample to large margins, couple small separation cuts at bottom, tied by blue "Cincinnati, O., Feb 18" cds on locally addressed gold floral bordered Valentine cover, **Very Fine.**  
 Scott No. **9** . . . . . Estimate \$200 - 300
- 1086 ☒ **3¢ Orange Brown, Type II**, clear to mostly large margins, tied by neat circular grid handstamp on **gold ornate bordered Valentine cover** to Alton, N.H., red "Dover, N.H., Feb 16" cds, simple gold bordering on reverse, **Very Fine, ex-Kuphal.**  
 Scott No. **10A** . . . . . Estimate \$300 - 400





1086



1087



1088



1088 (Enclosure)



1089



1089 (Enclosure)

- 1087 ☒ **3¢ Orange Brown, Type II**, margins ample to just clear at bottom right, tied by blue grid handstamp with matching "Harrisburg, Pa., Feb 7" cds, on embossed ornamental bordered Valentine cover to Hartsville, Pa., with original embossed lady cameo Valentine sheet with hand written 8-line poem; cover with light corner soiling at right, **Very Fine**.  
 Scott No. **10A** . . . . . Estimate \$200 - 300
- 1088 ☒ **3¢ Dull Red, Type I, Top Margin Horizontal Strip of Three**, left pair both showing gash on shoulder variety, tied by "Cannonsburgh, Pa., Feb 13" cds's on fresh embossed floral Valentine cover to Newark, O., with original gold bordered Valentine enclosure with central multicolored floral design, inside with handwritten 8-line poem dated "Feb 14, 1852", **Extremely Fine**, a wonderful Valentine cover and enclosure, *ex-Haas & Kuphal*.  
 Scott No. **11** . . . . . Estimate \$300 - 400
- 1089 ☒ **3¢ Dull Red, Type I**, in at top, tied by bold circular grid handstamp on large embossed floral and sheep in field view Valentine cover locally addressed in Richmond, Va., with original Valentine card with die sunk India proof of lady framed portrait at center and hand written 8-line poem datelined "Febry 14, 1853", **Very Fine**.  
 Scott No. **11** . . . . . Estimate \$200 - 300





1091



1090



1092



1093





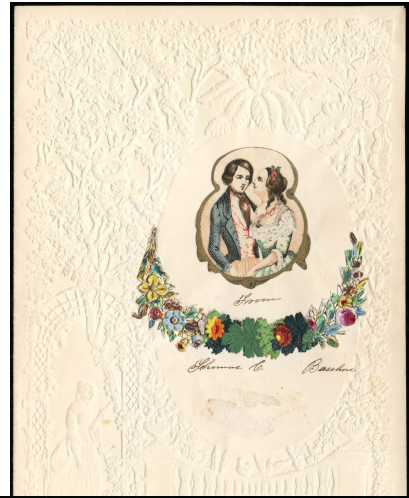
1094



1095

- 1090 ☒ **3¢ Dull Red, Type I, Left Margin Gutterline Single**, clear to in at upper right, tied by “Malden, Mas., Feb 18” cds on large embossed illustrated floral bordered Valentine cover showing Maiden and Sheep in Field View, to Greenfield, N.H., with original pierced floral bordered Valentine with gold wreathed Cherub Holding Birdcage with *Kershaw* imprint, inside with hand written 12-line poem, **Very Fine**.  
Scott No. 11. . . . . Estimate \$200 - 300
- 1091 ☒ **3¢ Dull Red, Type I, Left Margin Gutterline Single**, fine single tied by blue “Moorefield, Va., Feb 13” cds on fruit and floral embossed bordered Valentine cover to Romney, Va., with pierced lace bordered Valentine enclosure with a gold and floral bordered 12-line poem, **Very Fine and choice**.  
Scott No. 11. . . . . Estimate \$200 - 300
- 1092 ☒ **3¢ Dull Red, Type I**, margins large to just touching, canceled by manuscript and handstamp on **embossed floral border Valentine cover** to Charleston, Va., manuscript “Rob Roy, La., Feby. 17th /57” postmark, with original Valentine enclosure with hand colored Gentleman caricature and 8-line poem below, **Very Fine, ex-Kuphal**.  
Scott No. 11. . . . . Estimate \$150 - 200
- 1093 ☒ **3¢ Dull Red, Type II**, margins to just clear, rich color, manuscript canceled on **oversized gold bordered enamel Valentine cover** to Harrison, Me., manuscript “Waterford, Me., Feb 18” postmark, with matching elaborate laced Valentine enclosure with hand-colored floral designs and mirror center (mirror cracked as usual), handwritten two-line verse on face, **Very Fine and choice, ex-Haas**.  
Scott No. 11A. . . . . Estimate \$250 - 350
- 1094 ☒ **3¢ Dull Red, Type II**, penned circle around stamp, tied by blue circular grid handstamp on fresh large bronze floral bordered Valentine cover to Maldon Bridge, N.Y., matching bold “Kinderhook, N.Y., Feb 14” **Valentine’s Day** cds, with ornate lace Valentine enclosure (believed to be *Howland*) with central floral basket design, tipped in printed 6-line poem and notation, **Very Fine**.  
Scott No. 11A. . . . . Estimate \$200 - 300
- 1095 ☒ **3¢ Dull Red, Type II**, tied by “Cooperstown, N.Y., Feb 21” cds on fresh buff cover to Springfield Center, N.Y., with matching fold page Valentine enclosure with hand colored litho design showing **Gentleman and Lady Reclining by Stream** amid floral border and 8-line poem below, **Very Fine and choice, ex-Haas**.  
Scott No. 11A. . . . . Estimate \$200 - 300
- 1096 ☒ **3¢ Dull Red, Type II, Horizontal Pair**, margins large to slightly in at upper left, bright color, tied by rimless “Indianapolis, Ind., 3 Paid, Feb 14” **Valentine’s Day** cds on large embossed illustrated floral bordered Valentine cover showing Maiden and Sheep in Field View, to New Albany, Ind., with original pierced floral bordered Valentine (*Kershaw* imprint) with “The One of All the World I Love the Best” medallion at center, inside with silver bordered mirror (cracked), **Very Fine**.  
Scott No. 11A. . . . . Estimate \$200 - 300





1096



1097



1098



1099



1101



1101 (Enclosure)





1100

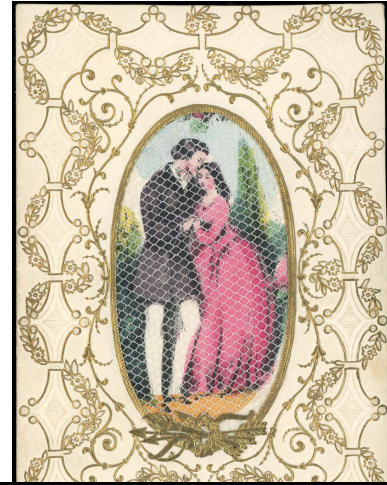
1102

- 1097 ☒ **3¢ Dull Red, Type II, Horizontal Pair**, margins large to just shaving at upper left, tied by blue "Harrisburg, Pa., Feb 11" cds on illustrated embossed Valentine cover showing **Women Under Arched Trelice and Floral Border**, with original matched embossed Valentine enclosure with lady & gentlemen view and floral garland accents (one accent missing), **Very Fine**.  
Scott No. 11A. . . . . Estimate \$200 - 300
- 1098 ☒ **3¢ Dull Red, Type II, Two Singles**, fine singles affixed at top corner on large locally addressed bronze ornate bordered Valentine cover, both tied by "New York, Feb 20" cds's, with matching design on backflaps, **Very Fine**.  
Scott No. 11A. . . . . Estimate \$200 - 300
- 1099 ☒ **3¢ Dull Red, Type II**, clear to large margins and deep color, tied by large "Paid" in grid cancel on ornate **gold bordered Valentine cover** to North Belmont, Me., red "Boston, Mar 17" cds at right, matching border design on reverse; some trivial toning, **Very Fine**.  
Scott No. 11A. . . . . Estimate \$150 - 200
- 1100 ☒ **3¢ Brownish Carmine, Type II**, margins mostly large to just in at top left, manuscript canceled and tied by red "East Jaffrey, N.H., Feb 26" cds on **embossed floral Valentine cover** initially addressed to East Jaffrey and forwarded to Stoddard, N.H., with original embossed pierced lace Valentine enclosure with handwritten verse, **Very Fine**.  
Scott No. 11A. . . . . Estimate \$150 - 200
- 1101 ☒ **3¢ Dull Red, Type II**, clear to large margins, tiny tear and crease at top, canceled by nest grid and tied by rimless "Lowell, Mass., Feb 1" cds on small floral border Valentine cover to Franklin, Vt., with matching pierced embossed illustrated Valentine showing man on Horse at center, **Very Fine**.  
Scott No. 11A. . . . . Estimate \$150 - 200
- 1102 ☒ **3¢ Dull Red, Type II**, tied by very fine strike of blue "Cedarville, O., Feb 18" cds on gold gilded floral and scroll Valentine cover to Neenah, Wis., includes original sticker-embellished pierced lace Valentine with *Mansell* maker's imprint and handwritten verse inside, **Very Fine**.  
Scott No. 11A. . . . . Estimate \$150 - 200



The Valentine's Day Sale

- 1103 ☒ **3¢ Dull Red, Type II**, bright color, tied by large "Paid" in grid handstamp and red "Boston, Mass., Feb 14" **Valentine's Day** cds on fresh cover to Keene, N.H., 1855 docketing, with printed and hand color enamel card Valentine with rose wreath border and 6-line poem at centered, **Very Fine**.  
 Scott No. **11A** . . . . . Estimate \$100 - 150
- 1104 ☒ **3¢ Dull Red, Type II**, margins large to slightly in, tied by bold blue "Paid 3" in circle handstamp on cover to North Turner, Me., matching "Lawrence, Ms., Feb 19" cds, with printed hand color vignette Valentine sheet showing Lady & Gentlemen view and 12-line poem, **Very Fine**.  
 Scott No. **11A** . . . . . Estimate \$100 - 150



1105

1106

- 1105 ☒ **1¢ Blue, Type II, Left Margin Horizontal Strip of Three**, tied by manuscript "Parkman Me, Feb 19" cancel on large floral embossed Valentine cover to Langesville Me., with *Kershaw* maker imprint, includes beautiful lace Valentine with Cupid surrounded by a hand colored rose-border, also said to be by *Kershaw*, **Very Fine and choice**.  
 Scott No. **20** . . . . . Estimate \$400 - 600
- 1106 ☒ **1¢ Blue, Type V, Horizontal Strip of Three**, neatly pen canceled on a locally addressed embossed ornamental envelope postmarked "Rutland, Vt., Feb 19, 1858" with matching "Paid"; includes **original gold gilt embossed and silk mesh valentine** with hand colored illustration and handwritten verse inside, **Extremely Fine and choice**.  
 Scott No. **24** . . . . . Estimate \$400 - 600
- 1107 ☒ **1¢ Blue, Type V**, tied by "Haverhill, Ms., Feb 14, 1860" **Valentine's Day** cds on locally addressed embossed floral border Valentine cover, with original pierced lace Valentine with floral embellishments and central lace pull up curtain to reveal hand written sentiment, **Very Fine**.  
 Scott No. **24** . . . . . Estimate \$300 - 400
- 1108 ☒ **1¢ Blue, Type V**, grid canceled (not tied) on gold gilt embossed ornamental enamel envelope addressed simply to "Miss Nellie Cutter, Present" with no indication of town, matching colorful lace Valentine with silver gilt trim, **Very Fine and attractive**.  
 Scott No. **24** . . . . . Estimate \$200 - 300
- 1109 ☒ **1¢ Blue, Type V**, s.e. at right, manuscript canceled on local gold floral bordered Valentine cover in East Ringold, O., matching alllover gold design on reverse; cover to tiny edge tears, **F.-V.F.**; with 2012 Weiss certificate.  
 Scott No. **24** . . . . . Estimate \$150 - 200

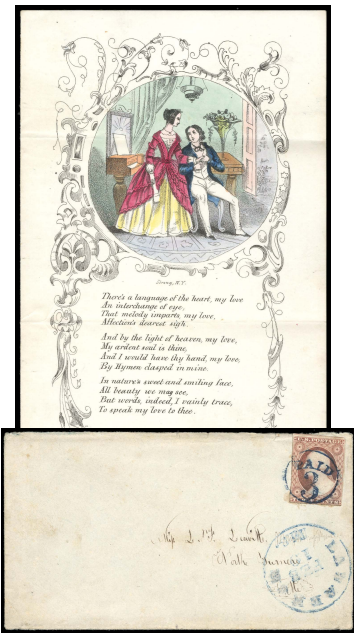




1103



1109



1104



1107



1108



1110

- 1110  **1¢ Blue, Type V, Horizontal Strip of Three**, tied by target handstamps on locally addressed embossed pierced ornamental border Valentine cover, with matching embossed Valentine with flower and bird in wreath with 4-line poem below; some breaks in cover embossing, **otherwise Very Fine.**  
 Scott No. 24. . . . . Estimate \$150 - 200
- 1111  **1¢ Blue, Type V**, tied by "Harrisburg, Pa., Feb 14, 1861" **Valentine's Day** cds on locally addressed floral embossed bordered Valentine cover with "N.Y. Val. Co., A" imprint on backflap, with original matching illustrated pierced Valentine (Windsor imprint) with red Heart on mesh lattice and 4-line poem inside with multicolored floral heart bordering; enclosure with slight soiling, **Very Fine.**  
 Scott No. 24. . . . . Estimate \$150 - 200



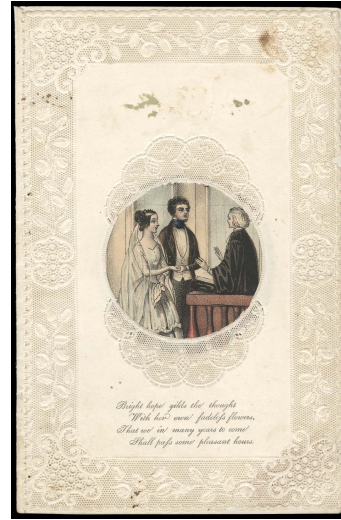


- 1112 ☒ **3¢ Dull Red, Type III, Horizontal Pair**, tied by “Sag Harbor, N.Y., Feb 15” cds on yellow oversized floral embossed Valentine cover to Greenville, Conn., with original pierced lace Valentine with floral embellishments, hand written “Hope” at center and *Mansell* maker’s imprint; some cover and enclosure edge wear, **otherwise Very Fine.**  
 Scott No. **26** . . . . . Estimate \$250 - 350
- 1113 ☒ **3¢ Dull Red, Type III**, natural gutter s.e. at right, tied by “West Cambridge, Mas., Feb 21, 1860” cds on fresh strawberry vine embossed bordered Valentine to Belmont, Mass., with pieced lace bordered Valentine (small flaws) with wedding scene at center and 4-line verse below, **Very Fine and choice, ex-Haas.**  
 Scott No. **26** . . . . . Estimate \$250 - 350
- 1114 ☒ **3¢ Dull Red, Type III**, scissor separated vertically into perfs at left, tied by large “Paid” in grid handstamp with red “Boston, Mass., Feb 15” cds alongside, on ornately embossed bordered Valentine cover to Newburyport, Mass., with matching pieced lace Valentine with floral heart shape mesh holding silver love birds and *Windsor* imprint, inside with Cupid and 4-line poem, **Very Fine.**  
 Scott No. **26** . . . . . Estimate \$200 - 300
- 1115 ☒ **3¢ Dull Red, Type III, Horizontal Pair**, in a rich shade, tied by two partial strikes “Uniontown, Pa., Feb 12, 1858” cds on oversized embossed ornamental Valentine cover to Smithfield Pa., with large sticker & ribbon-embellished lace Valentine with *Kershaw* maker’s imprint, **Very Fine.**  
 Scott No. **26** . . . . . Estimate \$150 - 200
- 1116 ☒ **3¢ Dull Red, Type IV, Two Singles**, small flaws, manuscript canceled and tied by bold “Norway, Me., Feb 17” cds on oversized embossed border Valentine cover to Yarmouth, Me., with pierced lace Valentine with floral embellishments, enamel envelope at center and *Kershaw* maker’s imprint, with **second smaller Valentine cover from correspondence** franked with **1857, 3¢ dull red, type III (26)** tied by “Norway, Me., Feb 14” **Valentine’s Day** cds, with Valentine enclosure; some light tone spots on the former, **otherwise Very Fine**, an interesting Valentine duo.  
 Scott No. **26A** . . . . . Estimate \$300 - 400

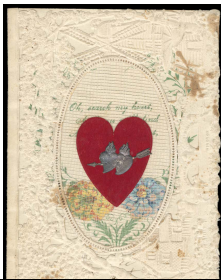




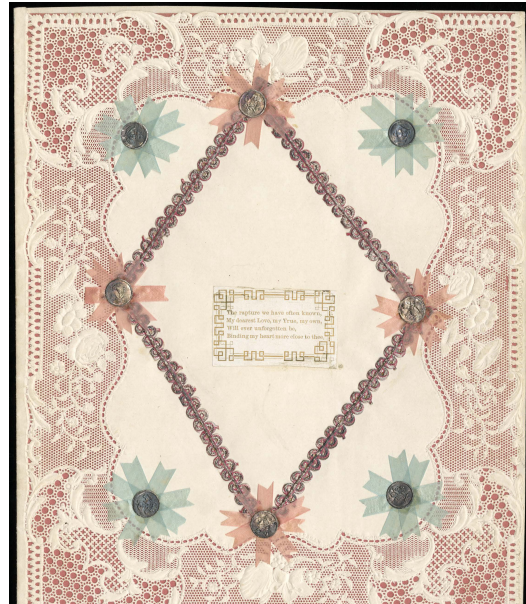
1113



1113 (Enclosure)



1111



1114



1115





1117

1118

- 1117 ☒ **1¢ Blue**, well centered, nibbed perf, tied by blue “Chicago, Ill., Feb 18, 1863” cds and target duplex on embossed Valentine cover to local post box, original enclosed multicolored embossed Valentine card with printed message: “*Declaration. I am thine love for ever.*”; small taped edge tear at right, **otherwise Very Fine and attractive use, ex-Haas.**  
Scott No. **63**. . . . . Estimate \$400 - 600
- 1118 ☒ **1¢ Blue, Dot in “U”**, intense color, tied by neat target handstamp on locally addressed embossed Valentine cover showing **Women Under Arched Trelice and Floral Border**, matching “Rockville Con., Feb 14, 1862” cds, original embossed valentine enclosure with multicolored sticker and handwritten sentiment, *ex-Wilson Hulme.*  
Scott No. **63 var.** . . . . . Estimate \$400 - 600
- 1119 ☒ **1¢ Blue**, slight rounded corner, tied by black grid and partial red “Waterbury, Ct., Feb 14, 1862” **Valentine’s Day** cds on locally addressed ornamental embossed bordered Valentine cover, with original pierced Valentine with central Girl Holding Flowers, inside with 8-line poem entitled “Be My Valentine”, **Very Fine.**  
Scott No. **63**. . . . . Estimate \$150 - 200
- 1120 ☒ **1¢ Blue**, small corner flaw at bottom left, tied by quartered cork handstamp on floral and ornate border Valentine cover, locally addressed with “Northfield, Mass., Feb 14” **Valentine’s Day** cds, with pierced lace Valentine enclosure with various embellishments and printed verse inside, **Very Fine.**  
Scott No. **63**. . . . . Estimate \$150 - 200
- 1121 ☒ **1¢ Blue, Three Singles**, right stamp with clipped top right corner & right perfs, grid canceled on cover to Ansonia, Ct., red “Bristol, Con., Feb 14, 1862” **Valentine’s Day** cds alongside, original red bordered Valentine entitled “The Sunshine of Love” with verse below and signed inside, **Very Fine.**  
Scott No. **63**. . . . . Estimate \$100 - 150
- 1122 ☒ **1¢ Blue**, small flaws, tied by neat grid handstamp with matching “Dayton, O., Feb 14” **Valentine’s Day** cds alongside on small embossed bordered locally addressed cover, with **penny dreadful comical Valentine** with 8-line verse; cover with partial backflap and slight soiling, **F.-V.F.**  
Scott No. **63**. . . . . Estimate \$100 - 150

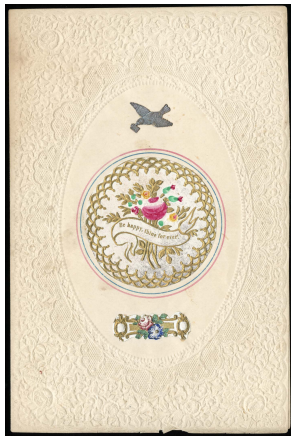




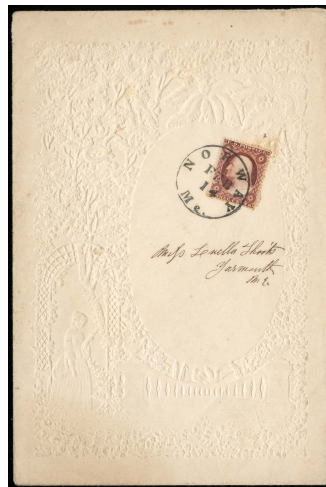
1116



1116 (Enclosure)



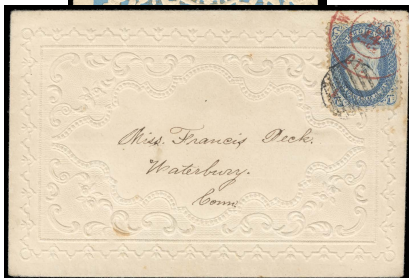
1116 (Enclosure)



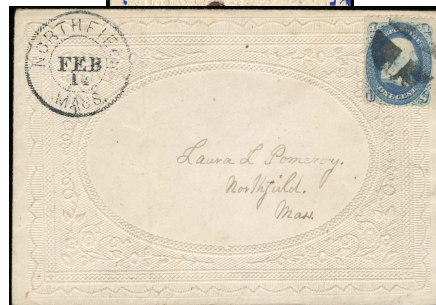
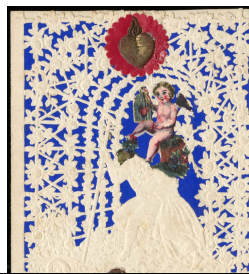
1116



1122



1119



1120



1121





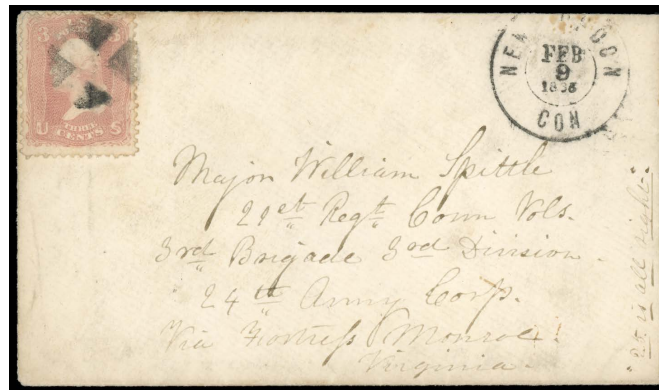
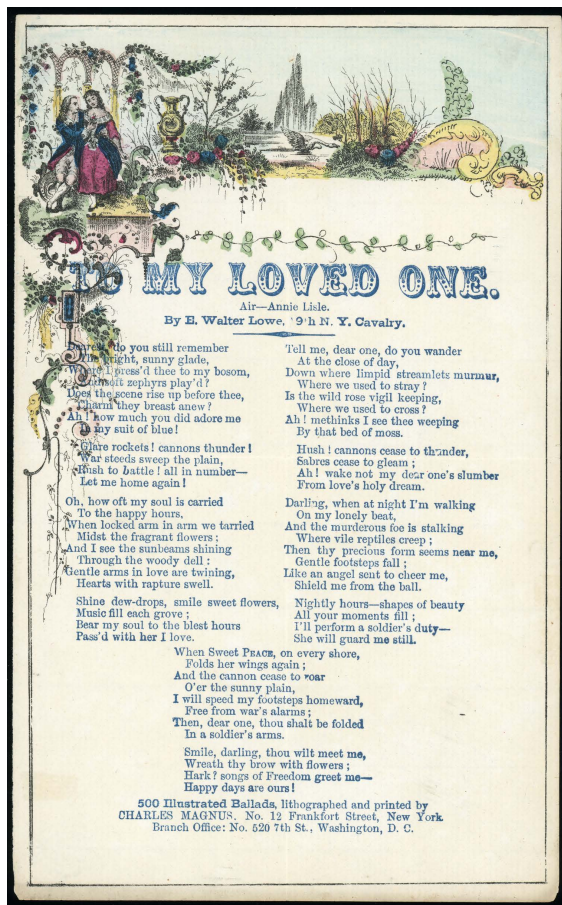
1123 ☒ **3¢ Rose**, tied by indistinct cds on fresh **Soldiers' Farewell Patriotic Valentine** with all-over design in orange showing soldier and lady in embrace, on oversized cover and addressed to Bristol Mills Me., with **Matching Enclosure of Soldier Reading Letter Which Opens To Show Couple Holding Hands**, with "True to Thee" verse below; trivial cover edge wear, **Very Fine and choice**.  
 Scott No. **65** . . . . . Estimate \$1,000 - 1,500

A LOVELY AND RARE PATRIOTIC VALENTINE WITH THE ORIGINAL ENCLOSURE.



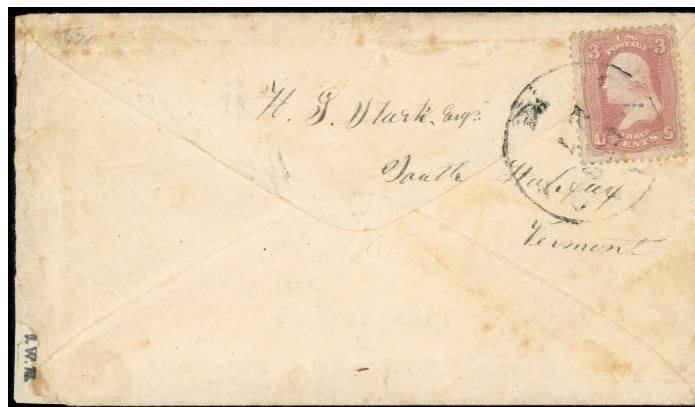
1124 (☒) **3¢ Rose**, tied by "Washington D.C., Feb 10" cds on oversized cover front with backflap with all-over illustrated **Romeo & Juliet Farewell Patriotic Valentine** design in red and blue showing lovers in embrace with Cupid at Desk at right, with matching enclosure of soldier reading letter which opens to show couple holding hand, with Love and Patriotism verse below; sealed front tears and some edge nicks, **Fine**, still an attractive example of this rare Valentine patriotic and enclosure.  
 Scott No. **65** . . . . . Estimate \$400 - 600





1125 ☒ **3¢ Rose**, quartered cork cancel on small cover postmarked “New London Con., Fe 9, 1865”, to *Major William Spittle, 29th Regt. Conn Vols., 3rd Brigade, 3rd Division, 24th Army Corp., Via Fortress Monroe Va.*; with *Charles Magnus* hand tinted song sheet, “My Loved One”, used as a Valentine, **Very Fine**; with 2023 P.F. certificate (declining opinion on enclosure origination).  
 Scott No. **65** . . . . . Estimate \$400 - 600

A GORGEOUS ITEM WHICH IS VERY RARE AS A MAGNUS VALENTINE.



1126 ☒ **3¢ Rose**, tied by indistinct Kentucky town postmark on patriotic cover, “War Map of Kentucky and Tennessee” allover purplish lilac patriotic design showing **Map of Kentucky and Tennessee and Portions of Surrounding States** with Gibson & Co. imprint at bottom, addressed on reverse to Halifax, Vt., repaired cover corner nick at lower right with portion of design drawn in, **otherwise Very Fine**, a rare allover Map Patriotic usage, *ex-Gallagher*. Scott No. **65**.  
 Estimate. . . . . \$300 - 400





**Abolition Philanthropist.**

O, massa Abolitionist! you're mighty fond of jokes,  
 And play em on de darkey as well as on white folks;  
 But all your mighty promises dey neber come to pass,  
 And every time we take your chair de burs stick in  
 our—trouserloons.



1128



1129

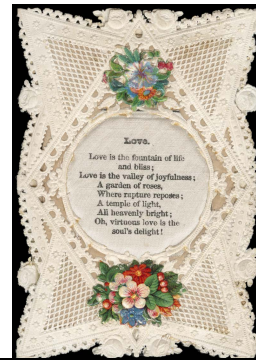


1127 ☒ **3¢ Rose**, rich color, tied by **fancy six point star** handstamp on ornamental embossed bordered Valentine cover to South Charleston, O., meticulously hand painted in various colors including "Speed The Soft Intercourse From Soul To Soul" verse in gold, matching light "Clifton, O., Mar 28" cds, **Very Fine**, quite striking; with 1996 P.F. certificate. Scott No. 65. . . . . Estimate \$300 - 400





1130



1132



1131



1131 (Enclosure)

- 1128 ☒ **3¢ Rose**, tied by blue target handstamps on oversized ornate embossed bordered Valentine cover to Yarmouth, Me., matching “Alton, Ill., Feb 14, 1863” **Valentine’s Day** cds and manuscript “Due 3¢”, with green and white pierced lace Valentine enclosure with banner embellishments and gold frame central lady portrait; cover with slight internal emboss splitting and slight soiling, **F.-V.F.**, *ex-Haas*. Scott No. **65**. . . . . Estimate \$200 - 300
- 1129 ☒ **3¢ Rose**, tied by segmented cork cancel on embossed ladies envelope postmarked red “Boston, Mass., Feb 15” cds, to Jaffrey N.H.; with “**Abolition Philanthropist**” penny dreadful Valentine enclosure; Valentine is separated and rejoined along one of two folds, **F.-V.F.**. Scott No. **65**. . . . . Estimate \$200 - 300
- 1130 ☒ **3¢ Rose**, canceled by grid and tied by New Jersey cds on ornate pierced bordered Valentine cover to New York City, with matching pierced Valentine with Lady and Bouquet vignettes and *Mansell* maker imprint at left, “Forget me not” verse inside, **Very Fine**. Scott No. **65**. . . . . Estimate \$150 - 200
- 1131 ☒ **3¢ Rose**, tied by “Paid” in circle handstamp on embossed botanical garden scene Valentine cover to new London, N.Y., with pierced lace Valentine with gold embellishments and central rose design; some cover tone spots, **otherwise Very Fine**. Scott No. **65**. . . . . Estimate \$150 - 200



The Valentine's Day Sale

- 1132 ☒ **3¢ Rose**, natural pre-printing paper fold and gutter s.e. at right, tied by circle of wedges handstamp with matching "Old Point Comfort, Va., Feb 2" cds on **blue and red patriotic Valentine cover** with hand drawn floral scrolls, pieced lace Valentine enclosure with floral embellishments and verse at center, **Very Fine**.  
 Scott No. **65** . . . . . Estimate \$150 - 200



- 1133 ☒ **3¢ Rose**, some short perfs from cover edge overlap, tied by neat circle of wedges handstamp with indistinct cds at top of cover to Carbondale, Pa., with illustrated lithograph **Patriotic Valentine** border showing **Military Officer and Woman with Revolver** at sides and **Cupid Firing Cannon** at top, reverse with crossed cannons on reverse; cover reduced at right, **F.-V.F.**, a very rare and unusual Union patriotic Valentine design.  
 Scott No. **65** . . . . . Estimate \$150 - 200

- 1134 ☒ **3¢ Rose**, tied by "New York, Feb 15" cds and rosette duplex with second strike at right, on embossed floral border Valentine cover showing **Pair of Ladies at Left and Gentleman Extending Hand at Right**, to Closter, N.J., with ornate multicolored Valentine enclosure with serrated border and central lace design showing two doves, **Very Fine**.  
 Scott No. **65** . . . . . Estimate \$75 - 100



- 1135 ☒ **2¢ Black**, natural s.e. at bottom, tied by light **Dedham, Mass.** cds and **fancy stars and stripes "Paid" shield handstamp** on fresh locally addressed fancy floral embossed cover, matching valentine enclosure with laced embossed allegorical figures and gold gilded four verse poem inside, **Very Fine**.  
 Scott No. **73** . . . . . Estimate \$300 - 400





1137



1137 (Enclosure)



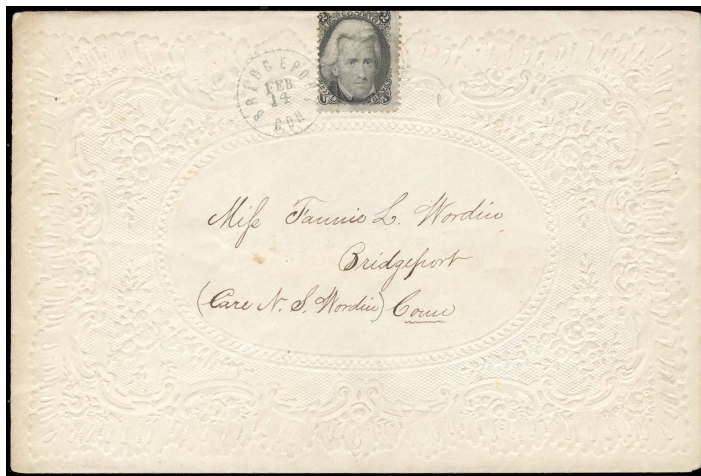
1134 (Enclosure)



1134

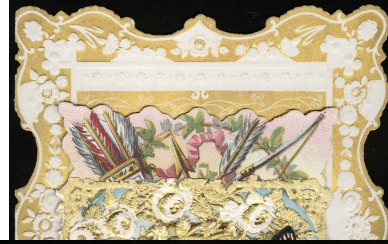


1138



- 1136 ☒ **2¢ Black**, fine single tied by “Bridgeport, Con., Feb 14” **Valentine’s Day** cds and target duplex on locally addressed embossed ornate bordered Valentine cover, with matching Valentine enclosure with silver Cupid, floral embellishments and 8-line verse, **Very Fine**. Scott No. **73**. . . . . Estimate \$250 - 350
- 1137 ☒ **2¢ Black**, tied by “Brooklyn, N.Y., Feb 13” cds on very small locally addressed embossed floral border cover, with original laced Cupid motif Valentine enclosure with two-line verse; partial back flap and central cover tear at top, **otherwise Very Fine**, this was the smallest cover and valentine card combination that was manufactured at the time. Scott No. **73**. . . . . Estimate \$200 - 300
- 1138 ☒ **2¢ Black**, tied by target handstamps on floral and women holding frame embossed bordered Valentine cover locally addressed in Philadelphia, Pa., with original pierced floral Valentine with multicolored floral embellishments and mirrored center (not cracked), *Berlin and Jones* maker’s imprint at left, inside with multicolored floral scrolled 8-line poem, **Very Fine**, Berlin and Jones where also known for their patriotic designs during its period. Scott No. **73**. . . . . Estimate \$200 - 300

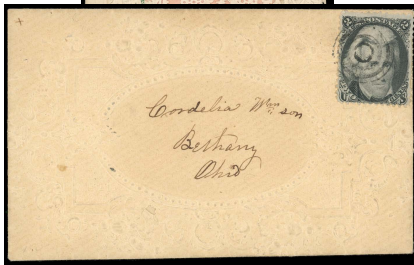
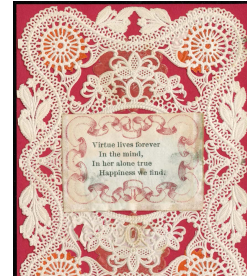




1139



1140



1141



1142



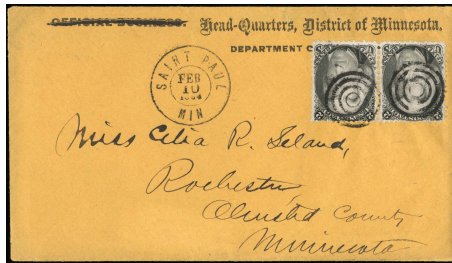
1143

- 1139 ☒ **2¢ Black**, tied by partial blue “Baltimore Md., Feb 13” cds and target duplex on attractive embossed Valentine cover to local street address, with elaborate multicolored purple and gold embossed Valentine enclosure, **Very Fine and choice**.  
Scott No. 73. . . . . Estimate \$200 - 300
- 1140 ☒ **2¢ Black**, deep color, canceled by bold circle of wedges cancel on locally addressed ornate floral bordered Valentine cover in Rockland, Me., with gold bordered Valentine with multicolored bow and arrow and peek-a-boo town scene at center, **Very Fine and choice**.  
Scott No. 73. . . . . Estimate \$200 - 300
- 1141 ☒ **2¢ Black**, tied by target handstamp on locally addressed floral embossed bordered cover to Bethany, O., matching Valentine enclosure with floral and Cupid motif embossed lace form, 4-line poem inside, **Very Fine**.  
Scott No. 73. . . . . Estimate \$150 - 200
- 1142 ☒ **2¢ Black**, just tied by “Springfield, Mass., Feb 14, 64” **Valentine’s day** cds with light partial strike canceling on locally addressed embossed floral bordered cover, with multicolored Valentine with ornate lace overlay, printed two-line verse and handwritten sentiment, **Very Fine and choice**.  
Scott No. 73. . . . . Estimate \$150 - 200
- 1143 ☒ **2¢ Black**, well centered single tied by “Delaware, O., Feb 12, ‘64” cds and target duplex on locally addressed ornate embossed bordered Valentine cover, with pierced lace Valentine card with 4-line poem at center, **Very Fine**.  
Scott No. 73. . . . . Estimate \$150 - 200





1146



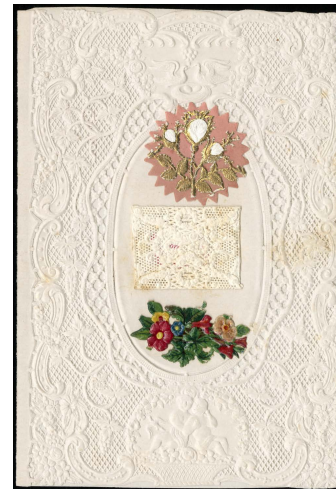
1145



1147



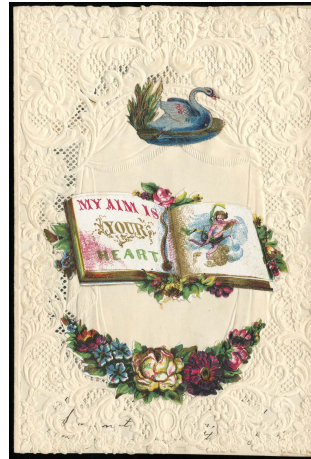
1144



1144 (Enclosure)

- 1144 ☒ **2¢ Black**, natural s.e. at left, tied by “Jamaica, N.Y., Feb 15” cds on locally addressed embossed floral bordered Valentine cover, with pierced lace Valentine enclosure with colored floral embellishments and small central cover with flaps opening to show forget-me-not sentiment, **Very Fine**.  
Scott No. 73. . . . . Estimate \$150 - 200
- 1145 ☒ **2¢ Black, Horizontal Pair**, tied by neat target handstamps with matching “Saint Paul, Min., Feb 10, 1864” on cover to Rochester, Minn., with “Head-Quarters, District of Minnesota” imprint at top (O.B. imprint crossed out), with original passionate enclosure to girlfriend regarding his longing for her and thinking of wedding plans, **Very Fine**.  
Scott No. 73. . . . . Estimate \$150 - 200
- 1146 ☒ **2¢ Black**, manuscript canceled on small embossed bordered Valentine cover addressed locally in Conneautville, Pa., with original embossed floral bordered Valentine with honeycomb pull up revealing women’s portrait illustration, **Very Fine**.  
Scott No. 73. . . . . Estimate \$100 - 150
- 1147 ☒ **2¢ Black**, minute tear at top, canceled by grid handstamp with matching “Brunswick, Me., Feb 23” cds on locally addressed pink drop cover, with crude woodcut comical **Vinegar Valentine** showing old maid with cats, **Very Fine**.  
Scott No. 73. . . . . Estimate \$100 - 150





- 1148 ☒ **3¢ Red, F. Grill**, wide margins, tied by neat “New Haven, Ct., Feb 15” cds & circle of wedges duplex on floral embossed bordered Valentine cover to Falls Village, Ct., with original pierced lace Valentine with multicolored embellishments, inside with lithograph lady and gentlemen scene and hand written sentiment; cover slightly reduced at right, **Very Fine**.  
 Scott No. **94** . . . . . Estimate \$150 - 200



1149



1150

- 1149 ☒ **2¢ Brown**, tied by “New York City, Received, Feb 18” cds and cork duplex on locally addressed embossed floral bordered Valentine cover, with pierced illustrated Valentine with Lady and Gentleman allegories and mirrored centered (not cracked), inside with printed 4-line poem; partial cover backflap, **Very Fine**.  
 Scott No. **113** . . . . . Estimate \$150 - 200
- 1150 ☒ **2¢ Brown**, large margins and choice centering, canceled by light cork and just tied by “Baltimore, Md., Feb 14” **Valentine's Day** cds on locally addressed drop cover, with colorful pieced laced Valentine with Cupid allegories and central forget-me-not, **Very Fine**.  
 Scott No. **113** . . . . . Estimate \$150 - 200
- 1151 ☒ **3¢ Ultramarine**, single each on two **Oregon State Valentines**; one on cover tied by target with matching “Jefferson, Oreg., Feb 14” **Valentine's Day** cds, other an embossed Valentine cover to Salem with partial Oregon Valentine's Day cds, both with Valentine enclosures, **Very Fine**.  
 Scott No. **114** . . . . . Estimate \$200 - 300
- 1152 ☒ **3¢ Ultramarine**, tied by “Utica, N.Y., Feb 15” cds and segmented cork duplex on beautiful ornate floral bordered Valentine cover to Trenton, N.Y., with intricate illustrated pieced lace Valentine showing various reclining figures amid pastoral bordering with various colored embellishments; cover with some trivial faint tone spots, **Very Fine**.  
 Scott No. **114** . . . . . Estimate \$150 - 200





1151



1153



1152



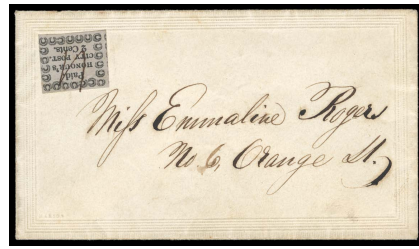
1152 (Enclosure)

- 1153 ☒ **1870, 3¢ Green**, tied by "Fayetteville, N.Y., Oct 31" duplex postmark on large enamel Valentine cover with ornate bronze floral and address panel scroll design bearing multicolored floral design, reverse with similar ornate bronze design; couple small edge tears at top, **otherwise Very Fine**, quite unusual and very attractive.  
 Scott No. 147 . . . . . Estimate \$150 - 200



- 1154 ☒ **1873, 1¢ Ultramarine**, tied by indistinct cds on locally addressed multicolored illustrated printed Valentine cover showing **Lady & Gentleman Kissing Cupid's Hands**; small cover nick repair at upper right, **otherwise Very Fine**, a wonderful illustrated Valentine design.  
 Scott No. 156 . . . . . Estimate \$300 - 400





1157



1155



1158

- 1155 ✉ **1881, 1¢ Gray Blue**, tied by “Plymouth, New York, Feb 13, 1883” on reverse of embossed bordered Valentine cover to Hemlock Lake, N.Y., with manuscript “(Due 2 cents)” on front and **1879, 1¢ Postage Due, vertical pair (J1)** on reverse canceled by target handstamps, “Livonia Station, Feb 14” Valentine’s Day octagon transit date stamp and next day receiving postmark, matching embossed Valentine with 4-line verse inside; top 1¢ due torn from cover opening, **otherwise Very Fine.**  
 Scott No. **206** . . . . . Estimate \$150 - 200

**Valentines - Carrier Usages**

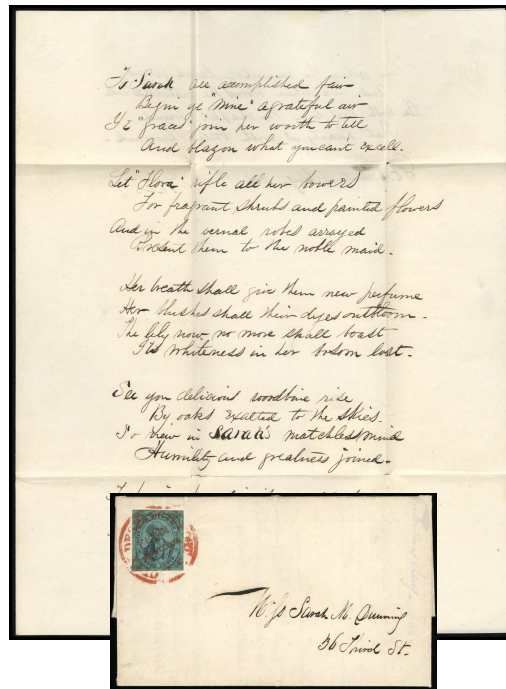


- 1156 ✉ **Boston, Mass., 1849-50, 1¢ Blue on Slate**, full well balanced margins, tied by red small fancy circle handstamp on small embossed ornamental bordered Valentine cover to Lowell, Mass., with “Boston, Mass., 5cts, Feb 10” cds, **Extremely Fine**, a wonderful petite Valentine usage, *ex-Caspary*.  
 Scott No. **3LB2** . . . . . Estimate \$200 - 300
- 1157 ✉ **Charleston, S.C., Honour’s City Express, 1851-58, 2¢ Black on Bluish**, position 6, margins large to just touching at lower right, tied by manuscript cancel on embossed bordered cover with local street address, **Very Fine.**  
 Scott No. **4LB8** . . . . . Estimate \$200 - 300





Ex 1159



1161

- 1158 ☒ **New York, N.Y., U.S. City Despatch Post, Feb 14, red Valentine's Day cds on locally addressed bronze ornate bordered Valentine cover, inside of cover with hand written 5-line poem (a bitter Valentine from a jilted suitor) dated "Feb 14th '46"; slight edge soiling, **Very Fine.****  
 Estimate. . . . . \$300 - 400
- 1159 ☒ **New York, N.Y., U.S. City Despatch Post, Feb 11, 1 O'Clock, bold clear red cds on locally addressed cover, with original embossed bordered Valentine enclosure with gold bouquet, floral banner, printed 6-line poem and Mansell maker's imprint, **Very Fine.****  
 Estimate. . . . . \$200 - 300



- 1160 ☒ **New York, N.Y., U.S. City Despatch Post, 1842-45, 3c Black on Blue Green, large margins, faint corner crease, tied by light red "U.S. City Despatch Post, Feb, 9 O'Clock" cds on fresh locally addressed Valentine cover with bronze floral border showing Cherub Holding Horn, with matching floral bordering on reverse; small cover tear at bottom, **Very Fine, ex-Ackerman & Hall.****  
 Scott No. **6LB5** . . . . . Estimate \$2,000 - 3,000

A BEAUTIFUL VALENTINE COVER BEARING A UNITED STATES CITY DESPATCH POST CARRIER ISSUE.



- 1161 ☒ **New York, N.Y., U.S. City Despatch Post, 1842-45, 3¢ Black on Blue Green**, large margins, slight creasing, tied by bold socked-on-the-nose red "U.S. City Despatch Post, Feb 14, 9 O'Clock" cds on fresh locally addressed folded letter, with lengthy 24-line poem dated "St. Valentines Day 1844", **Very Fine and attractive**.  
 Scott No. **6LB5** . . . . . Estimate \$200 - 300



- 1162 ☒ **New York, N.Y., U.S. City Despatch Post, 1849, 1¢ Black on Rose, Bottom Margin Single**, ample to large margins with full sheet selvage at bottom, tied by neat red "New York, 5 cts, Feb 6" cds on ornate **gold floral bordered Valentine cover**, matching "Paid" handstamp and pencil "5" rating, with matching allover design on reverse; portion of address erased and light corner wear, **Very Fine, ex-Worthington**; with 1991 P.F. certificate.  
 Scott No. **6LB9** . . . . . Estimate \$2,000 - 3,000

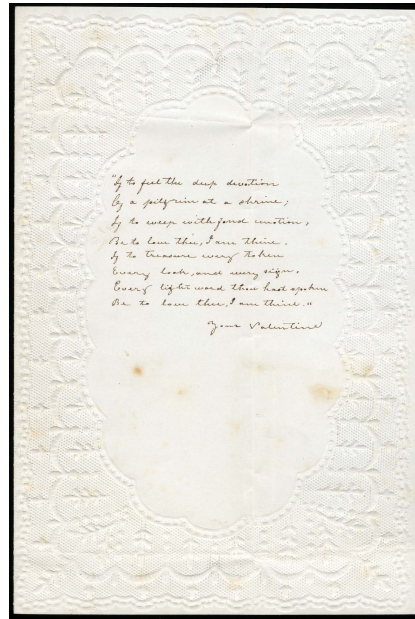
A REMARKABLE NEW YORK, U.S. CITY DESPATCH POST 1¢ ROSE ISSUE TIED ON A GOLD PRINTED VALENTINE COVER.

*Most examples of these printed Valentine designs of this era where printed in bronze with many incorrectly described as gold. This example in true gold print as quite rare.*

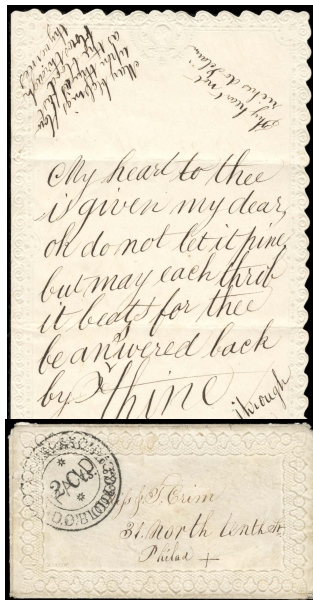




1163



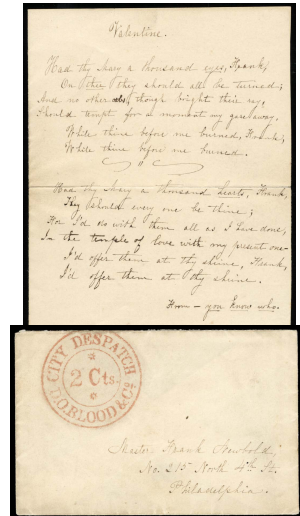
1163 (Enclosure)



1164



1165

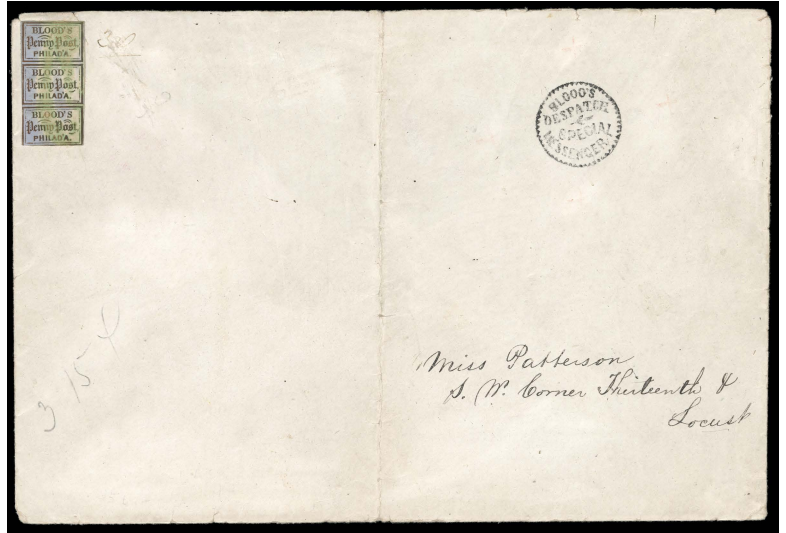


1166

Valentines - Local Usages

- 1163 ☒ **D.O. Blood & Co., Blood's Despatch, Feb 18, 8 A.M.**, clear cds on embossed bordered Valentine cover to New Castle, Pa., in combination with **1851, 3¢ orange brown (10A)** with margins ample to slightly in at bottom left, tied by blue "Philadelphia, Pa., Feb 18" cds, 1862 docketing on backflap, with original matching embossed bordered Valentine enclosure with hand written 8-line poem; cover with a couple small edge tears, **otherwise Very Fine**.  
Estimate. . . . . \$300 - 400
- 1164 ☒ **D.O. Blood & Co., City Despatch, 2 Cts.**, bold circular handstamp with additional "Paid" handstamp struck at center, on small ornamental bordered Valentine cover, locally addressed, with original Valentine sheet with hand written versed poem; light cover soiling, **Very Fine, ex-Gibson**.  
Estimate. . . . . \$250 - 350
- 1165 ☒ **D.O. Blood & Co., City Despatch, 2 Cts.**, clear circular handstamp on locally addressed bronze floral border Valentine cover, with matching ornamental design on backflaps; small corner stain at bottom left, **otherwise Very Fine**.  
Estimate. . . . . \$200 - 300
- 1166 ☒ **D.O. Blood & Co., City Despatch, 2 Cts.**, bold neat strike of red circular handstamp on small locally addressed cover, with original hand written Valentine with 12-line poem datelined "Valentine's eve 1847", **Very Fine and choice**.  
Estimate. . . . . \$200 - 300





1168



Ex 1167



1169



1171



1170



The Valentine's Day Sale

- 1167 ☒ **Blood's Despatch, Special Messenger**, serrated circular handstamp on **two oversized Valentine covers**; includes floral embossed cover with #15L14 and #11 locally addressed with manuscript 7¢ notation below (with enclosure), large locally addressed cover with five #15L13 arranged in a cross with Feb 16 company date stamp (cover deeply acidified), also includes and a **folded Penny Dreadful** with multicolored illustration of "the Bachelor" pitch forked by and slung over the shoulder of the devil, with "Blood's City Despatch 2cts." double circle handstamp on face; condition varies, **Fine and interesting**.  
 Estimate. . . . . \$300 - 400
- 1168 ☒ **Blood & Co., 1854 (1¢) Bronze on Lilac, Vertical Strip of Three**, margins ample to a bit in, acid canceled on large locally addressed enamel Valentine cover, clear "Blood's Despatch, Special Messenger" fancy serrated circular handstamp and pencil "3 /5¢" at lower left noting the 3¢ prepayment and total of 5¢ for the special same day delivery rate (2¢ apparently paid in cash); cover with vertical file fold and missing backflap, **otherwise Very Fine**, a rare local special delivery rate usage, *ex-Steinmetz, Haas & Stimmell*.  
 Scott No. **15L14** . . . . . Estimate \$300 - 400
- 1169 ☒ **Bouton's City Dispatch Post**, red oval handstamp on ornate bronze bordered Valentine cover locally addressed, with matching design on backflaps, **Very Fine**.  
 Estimate. . . . . \$200 - 300
- 1170 ☒ **Bouton's City Dispatch Post, 1848, 2¢ Black on Gray Blue**, ample to large margins, tear at top, tied by by red "Paid Bouton" handstamp on locally addressed ornate bordered **Valentine cover**, with matching "Bouton's City Dispatch Post" oval handstamp alongside; cover tear at lower right and missing backflap, **Fine**, *ex-Emerson*.  
 Scott No. **18L2** . . . . . Estimate \$400 - 600
- 1171 ☒ **Boyd's City Express Post, Feb 14**, oval **Valentine's Day** date stamp on embossed locally addressed folded ladies Valentine, with hand written 9-line Vinegar Valentine poem with last line...*And came alas! too near being smitten, With all of these three who sent me* ending with an "A" on a felt mitten (sewn on letter) and dated "Valentines Day 1851"; cover soiling, **F.-V.F.**, a very interesting and rare hand written vinegar Valentine.  
 Estimate. . . . . \$150 - 200



- 1172 ☒ **Browne & Co.'s City Post Office, 1852-55, 2¢ Black**, margins large to slightly in at right, uncanceled in combination with **1851, 3¢ dull red** (11A) with ample too huge margins showing portions of adjacent stamps at top and bottom, tied by blue "Cincinnati, O., Feb 12" cds on large embossed bordered **Valentine cover** to Covington, Ky., **Very Fine**; with 2013 P.F. certificate.  
 Scott No. **29L2** . . . . . Estimate \$1,500 - 2,000

AN ATTRACTIVE AND RARE 2¢ BROWNE & CO.'S AND 1851 3¢ ISSUE ON A VALENTINE COVER.



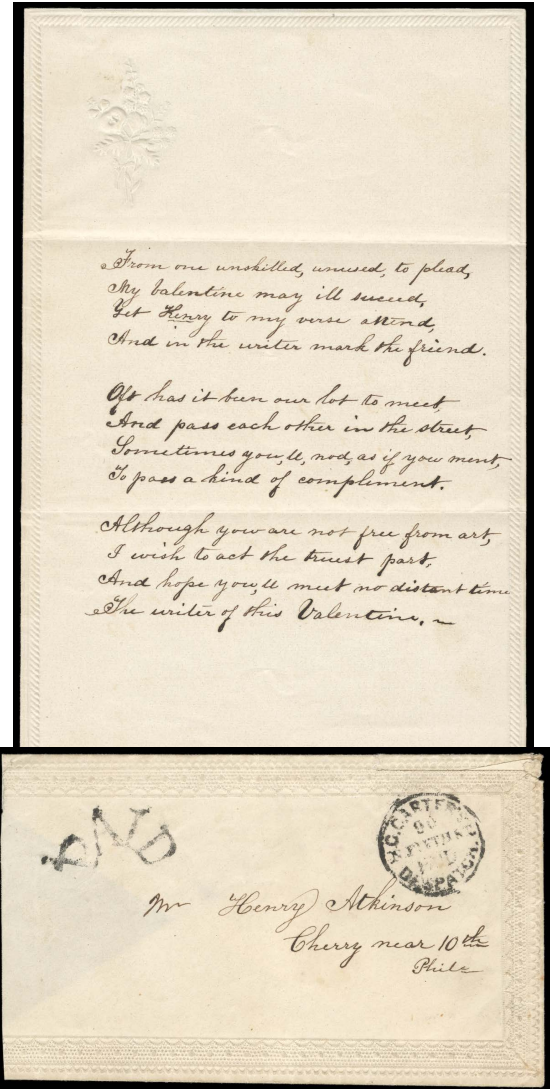


1173

1173 ☒ **Bush's Brooklyn City N.Y. Express, 2 Cent**, small red oval handstamp on locally addressed ornate pierced lace Valentine cover with Kershaw maker's imprint, with matching original Valentine with central lithograph roses and hand written 12-line poem datelined "Feby 14/48", **Very Fine**.  
Estimate. . . . . \$750 - 1,000

A RARE VALENTINE USAGE CARRIED BY BUSH'S BROOKLYN CITY EXPRESS - ONE OF ONLY TWO RECORDED.

1174 ☒ **G. Carter's Despatch, 90 N. Fifth St., Paid**, circular handstamp with matching arched "Paid" handstamp on small locally addressed embossed border Valentine cover, with original matching embossed Valentine page with hand written 12-line poem; cover reduced at left with missing side flap and horizontal cut at top right, **F.-V.F.**, still a very scarce local Valentine usage.  
Estimate. . . . . \$150 - 200



1174





1175 ☒ **Towle & Co. Letter Delivery, 7 State St., 2 Cents, red oval handstamp with matching "Paid" handstamp at top of large gold ornate floral address panel and border Valentine cover to local street address, similar floral border design on reverse, with elaborate Valentine enclosure with intricate lace and multicolored motifs with central gold frame lady; some edge tone spots, F.-V.F., and wonderful Valentine and scarce local usage, ex-Kuphal.**  
 Estimate. . . . . \$400 - 600



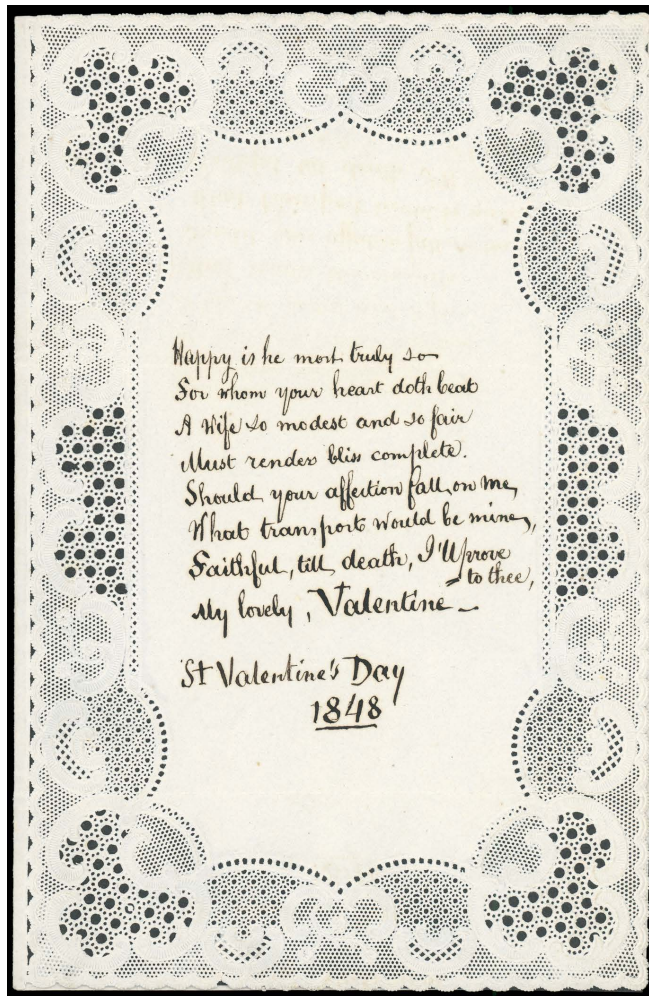


1176 ☒ **Hawkins' City Dispatch Post**, small blue two line handstamp struck twice at top on large enamel **Valentine cover** with ornate bronze floral and address panel scroll design bearing multicolored floral design, addressed to "Miss Mary Hove, No 9 Dominick Street", with floral design Valentine enclosure; some light edge wear, **Very Fine and choice**; with 2012 P.F. certificate.  
 Estimate. . . . . \$5,000 - 7,500

THE ONLY RECORDED EXAMPLE OF THE HAWKINS' CITY DISPATCH POST BEARING IT'S POST HANDSTAMP ON A VALENTINE COVER.

*There is no known information regarding this post and possibly was short-lived and/or operated during the influx of Valentine correspondences. Since there is a Dominick St. in New York City and that another Valentine with matching design is known used in New York State, lends credence to the likely possibility that this post operated within New York City.*





1177 ☒ **Kidder's City Express Post, 1847, 2¢ Black on Pale Blue**, initialed "I S" (Isaac Snedecker), margins large to just shaving frameline at right, affixed mostly on backflap and around to front, canceled by strike of "Paid" handstamp with second strike alongside with both strong strike impressing through to reverse, on a most **intricate pierced lace Valentine cover** neatly street addressed in Brooklyn, matching lace Valentine enclosure with handwritten 8-line poem and "St. Valentine's Day 1848" dating; stamp with crease from cover edge placement and cover and enclosure in a remarkable state of preservation and especially so considering it's incredibly delicate nature, **Very Fine and choice**.

Scott No. 93L1 . . . . . Estimate \$3,000 - 4,000

A TRULY REMARKABLE VALENTINE COVER CARRIED BY KIDDER'S CITY EXPRESS POST.





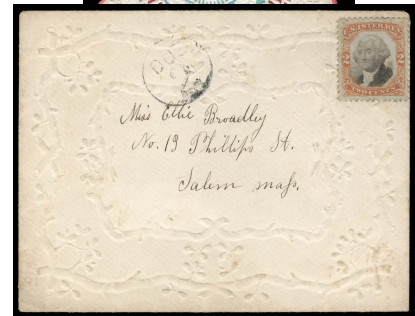
1178



1178



1179



1180

- 1178 ☒ **Swart's Post Office, Chatham Square, N.Y., B.**, red oval handstamp on bronze ornate locally addressed Valentine cover with similar backflap designs, with embossed bordered Valentine sheet with hand painted floral accents and 6-line poem, **Very Fine and attractive**. Estimate. . . . . \$300 - 400
- 1179 ☒ **Swart's City Dispatch Post, 1849-53 (1¢) Pink**, four margin single tied by "Swart's Post Office, Chatham Square, Feb" oval date stamp, with matching boxed "Paid, Swarts" handstamp on locally addressed embossed ornamental Valentine cover, with matching embossed Valentine with small gold stickers, **Very Fine**. Scott No. **136L10**. . . . . Estimate \$400 - 600

**Valentines - Revenue Usages**

- 1180 ☒ **Documentary, 1871, Third Issue, 2¢ Orange & Black**, uncanceled on embossed floral bordered Valentine cover locally addressed in Salem, Mass., with "Due 2" in circle handstamp at center, *Whitney* maker imprint on reverse, matching floral bordered Valentine with multicolored Troubadour at center and verse inside, **Very Fine**, an unusual illegal attempt to the the drop rate on a Valentine. Scott No. **R135**. . . . . Estimate \$200 - 300



Confederate States of America



1181



1182

Valentines - U.S. Used in the Confederacy

- 1181 ☒ Albany, Ga., Feb 14, 1861, clear blue Valentine's Day cds canceling on U.S. 1860, 3¢ Star Die entire (U27) to Macon, Ga., with multicolor floral bordered printed Valentine sheet with 21-line poem; small cover edge opening tear at top, still Very Fine, an unusual Valentine and C.S.A. usage combination.  
Estimate. . . . . \$200 - 300

Valentines - State Postmarks

- 1182 ☒ Magnolia, N.C., Feb. 13, cds with matching "Paid" handstamp and manuscript "10" rate on cover to Raleigh, N.C., forwarded to Huntsville with blue "Raleigh, N.C., Feb 15" cds with matching "Forwarding" straight line and "Due 10" handstamps, with multicolor Vinegar Valentine entitled "The Happy Husband" with 8-line satirical poem below; small edge repair at top right, otherwise Very Fine.  
Estimate. . . . . \$500 - 750



Valentines - Regular Issues



1183 ☒ **1861, 5¢ Green**, margins large to just touching at top right, deep bold color, tied by clear “Charleston, S.C., Feb 15, 1862” cds on intricate **floral embossed Valentine cover** military addressed in Church Flats, S.C., with original enamel embossed Valentine enclosure with central Cupid in heart design, erroneously docketed “1861” at center; cover with edge wear and some sealed tears, **F.-V.F.**, *ex-Brandon*.  
Scott No. **1** . . . . . Estimate \$2,000 - 3,000

A VERY RARE 1861 5¢ CONFEDERATE STATES FIRST ISSUE USAGE ON A VALENTINE COVER.





1184

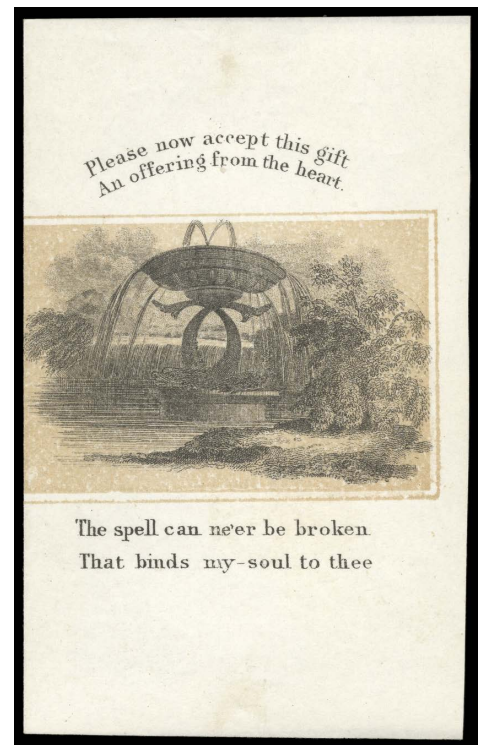


1186

- 1184 ☒ **1861, 5¢ Green, Top Margin Single**, large margins to clear at right, tied by clear blue “Norfolk, Va., Feb 10, 1862” cds on **embossed valentine cover** to Petersburg Va., **Very Fine**.  
 Scott No. **1** . . . . . Estimate \$200 - 300



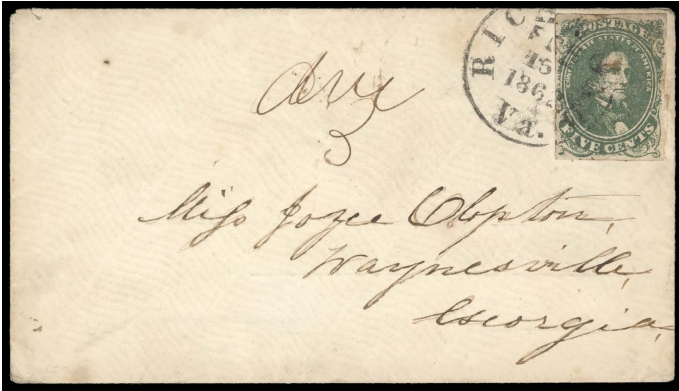
1185



1185 (Enclosure)

- 1185 ☒ **1861, 5¢ Green**, clear to ample margins, tied by “Richmond, Va., Feb 14, 1862” **Valentine’s Day** cds on cover to Pattonsburg, Va., with 4-line verse and fountain view sheet, **Very Fine**.  
 Scott No. **1** . . . . . Estimate \$200 - 300
- 1186 ☒ **1861, 5¢ Green**, clear to large margins, tied by “Graniteville S.C., Jan 17” cds on enamel embossed ladies envelope to Dunns Rock N.C.; edge toning and other flaws mostly on reverse, **Very Fine appearance**.  
 Scott No. **1** . . . . . Estimate \$150 - 200
- 1187 ☒ **1861, 5¢ Green**, clear to large margins, tied by “Richmond, Va., Feb 15, 1862” cds on wavy-line laid paper envelope to Waynesville Ga., manuscript “Due 5” likely due to overweight Valentine; some light toning, **F.-V.F.**  
 Scott No. **1** . . . . . Estimate \$150 - 200

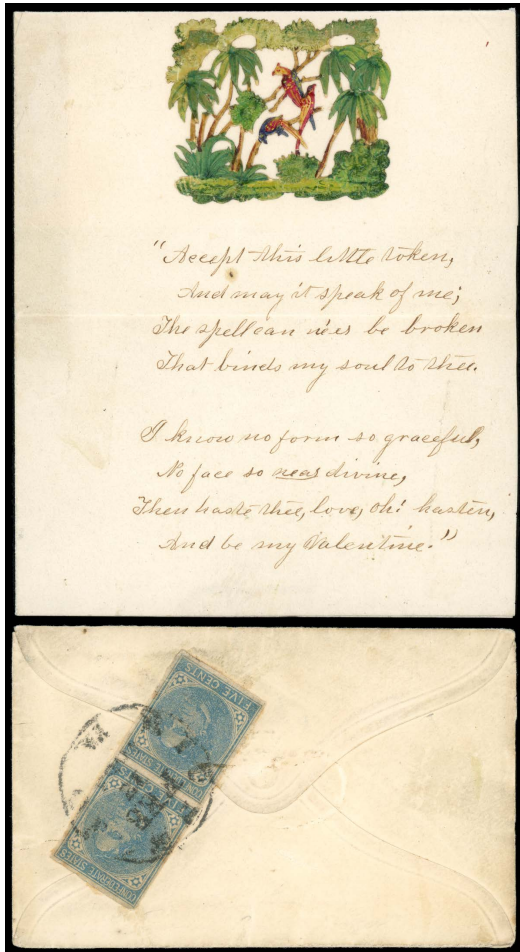




1187



1189



1188



1190



The Valentine's Day Sale

1188 ☒ **1862, 5¢ Blue, Archer & Daly Printing, Vertical Pair**, full margins, tied by "Richmond Va., Feb 12" cds on reverse of Valentine cover to Mocksville, N.C., original Valentine enclosure with hand written eight-line verse poem with multicolored lattice enamel "Birds of Paradise" View at top; some light cover edge wear, **Very Fine**, a rare Valentine cover and original enclosure, *ex-Murphy*.  
 Scott No. 7 . . . . . Estimate \$500 - 750

1189 ☒ **1862, 5¢ Blue, Archer & Daly Printing, Horizontal Pair**, tied by partial "Richmond Va., Feb 25, 1863" cds (left stamp tied by black pen stroke) on embossed ladies envelope to Centre, Ala., **F.-V.F.**  
 Scott No. 7 . . . . . Estimate \$150 - 200

*Includes an Ashbrook typed note speculating that this envelope contained a Valentine from a soldier in "the Lines" around Richmond, who got the envelope from a local sutler, then had to delay before getting into Richmond to mail it.*

1190 ☒ **1862, 5¢ Blue, Archer & Daly Printing, Horizontal Pair**, tied by "Charleston S.C., Feb 19" cds on small cover to Augusta Ga.; includes large (10x14") hand colored penny dreadful comic Valentine "Dry Good Dummy" by artist C.J. Howard with quite an unflattering verse; cover with small stain at lower right, Valentine had to be folded many times to fit into the small envelope and has multiple repaired splits, **Fine**, *ex-Haas*.  
 Scott No. 7 . . . . . Estimate \$100 - 150



1191 ☒ **1863, 10¢ Blue**, clear to huge margins, tied by open 7-bar circular field grid handstamp on cover to Wolf Trap, Va., with "via Richmond" routing endorsement at top, with original **Valentine enclosure** with handwritten verse and **hand painted Bow & Ammunition Shell with Floral Embellishment**; some toning and staining to enclosure, **Fine**, a rare Confederate Valentine from the field with battle implications.  
 Scott No. 11. . . . . Estimate \$1,000 - 1,500

A HISTORIC AND IMPORTANT COVER FROM THE WAR BETWEEN THE STATES





1192



1194



1194



Ex 1193



Ex 1196



Ex 1194



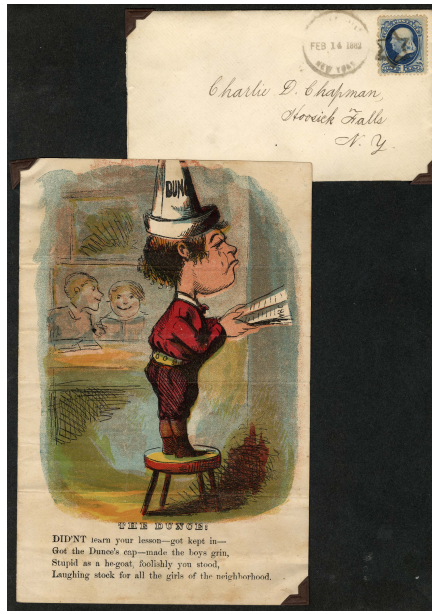
1192 ☒ **1863, 10¢ Blue**, light gum tone, tied by bold blue “Emory, Va., Feb 13” cds on small somewhat reduced homemade cover to Carter’s Depot, Tenn., with matching **homemade Valentine enclosure** with multicolored enamel lattice floral border and hand written four line poem dated “Feb 14, 1864”; some cover stains which match the reverse of the enclosure, **F.-V.F.**, and very rare, *ex-Antrim and Nummelley*. Scott No. **11**. . . . . Estimate \$400 - 600



The Valentine's Day Sale



Ex 1195



Ex 1197

Valentine Collections and Balances

- 1193 ☒ **Valentine Cover Group, 1840-60's**, of 16 covers many with enclosures; early stampless including oversized locally addressed bronze floral border Valentine from Westfield, Mass., 1848 fold Valentine used in England on Valentine's Day, penny dreadful comical Valentine use, stamp usages with #11, 63, 65 & 73 usages, few hand carried from the later period, etc., **generally F.-V.F. or better.**  
Estimate. . . . . \$200 - 300
- 1194 ☒ **Valentine Collection Balance, 1840-80's**, of 10 covers and 4 separate enclosures; covers include 1847 folded letter Valentine from Portland, Me. to Prince Edward Island (stained and soiling), ca. 1850's local stampless oversized bronze floral design from Bilerica, Mass., large bronze ornamental design cover from Winchester, N.Y. with enclosure, 1865 floral embossed design with #65 from Shrewsbury, Vt., couple other stampless embossed covers from the 1850-60's and three others from the 1870's franked with 3¢ Banknote (one with enclosure), another franked with #210 with enclosure, enclosures are early decorated sheets ca. 1840-50's; condition nice overall, **generally F.-V.F. or better.**  
Estimate. . . . . \$400 - 600
- 1195 ☒ **Valentine Covers With Banknote Issues, 1870-80's**, group of over 32 covers with all having enclosed Valentines; with various 1¢, 2¢ & 3¢ issue frankings including one 2¢ vermilion pair use, wide range of townmarks with many Valentine's Day dates, section of 7 penny dreadful comical Valentines, most embossed bordered covers with an array of multicolored Valentine enclosure of the period, interesting carte-de-viste with printed "How To Kiss A Lady" bordered instructions; condition a bit varied, **generally F.-V.F. or better.**  
Estimate. . . . . \$500 - 750
- 1196 ☒ **Valentine Cover & Stamp Balance**, of over 30 covers, some additional Valentine enclosures / ephemera related, and a few fancy heart cancels on and off cover; covers mostly from the turn of the century with enclosures, later items including 1930's fancy postmarks including Love, Miss., few interesting penny dreadful comical Valentines, etc., **generally F.-V.F. or better.**  
Estimate. . . . . \$250 - 350
- 1197 ☒ **Valentine & Romance Leather Post Cards, 1905-07**, 14 cards, some hand-colored, most Female allegories with verses, various frankings and origins; some stamp flaws as usual, **F.-V.F.**  
Estimate. . . . . \$300 - 400

End of Sale - Thank You



