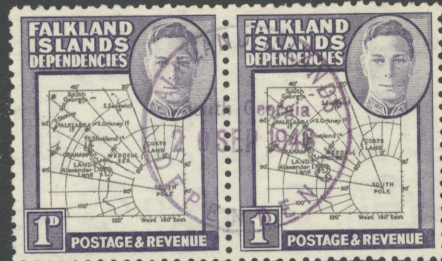


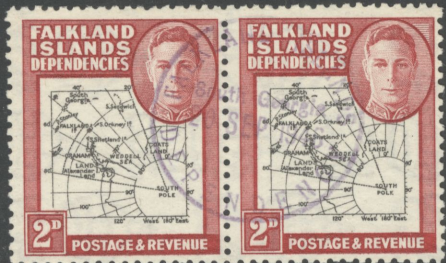
SG G1a a9
EXTRA
ISLAND
£328



SG G1a
G1a
EXTRA
ISLAND +
GAP
£325



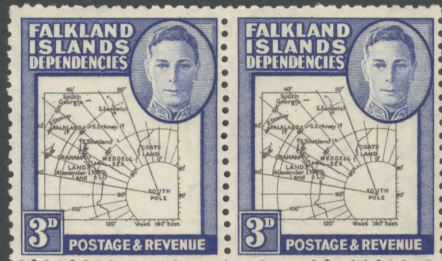
SG G2,
2a
EXTRA
ISLAND
£202



SG G3a,
3a
EXTRA
ISLAND +
GAP
£351



SG G3b
MISSING
"I"
£350



SG G4,
4b
MISSING
"I"
£



SG G4d
DOT BY
OVAL
£375



SG G6b
MISSING
"I"
£325



SG G7c
SOUTH
"POKE"
RPS
CERT
£275

P.T.O.



OLMAS DE LA RUE & COMPANY, LIMITED, LONDON

121-8, var
 SG 1-5,
 6, 7-8
 IMPRINTS
 CANCELLED
 SO. GEORGIA

ochre

20/-

SOUTH

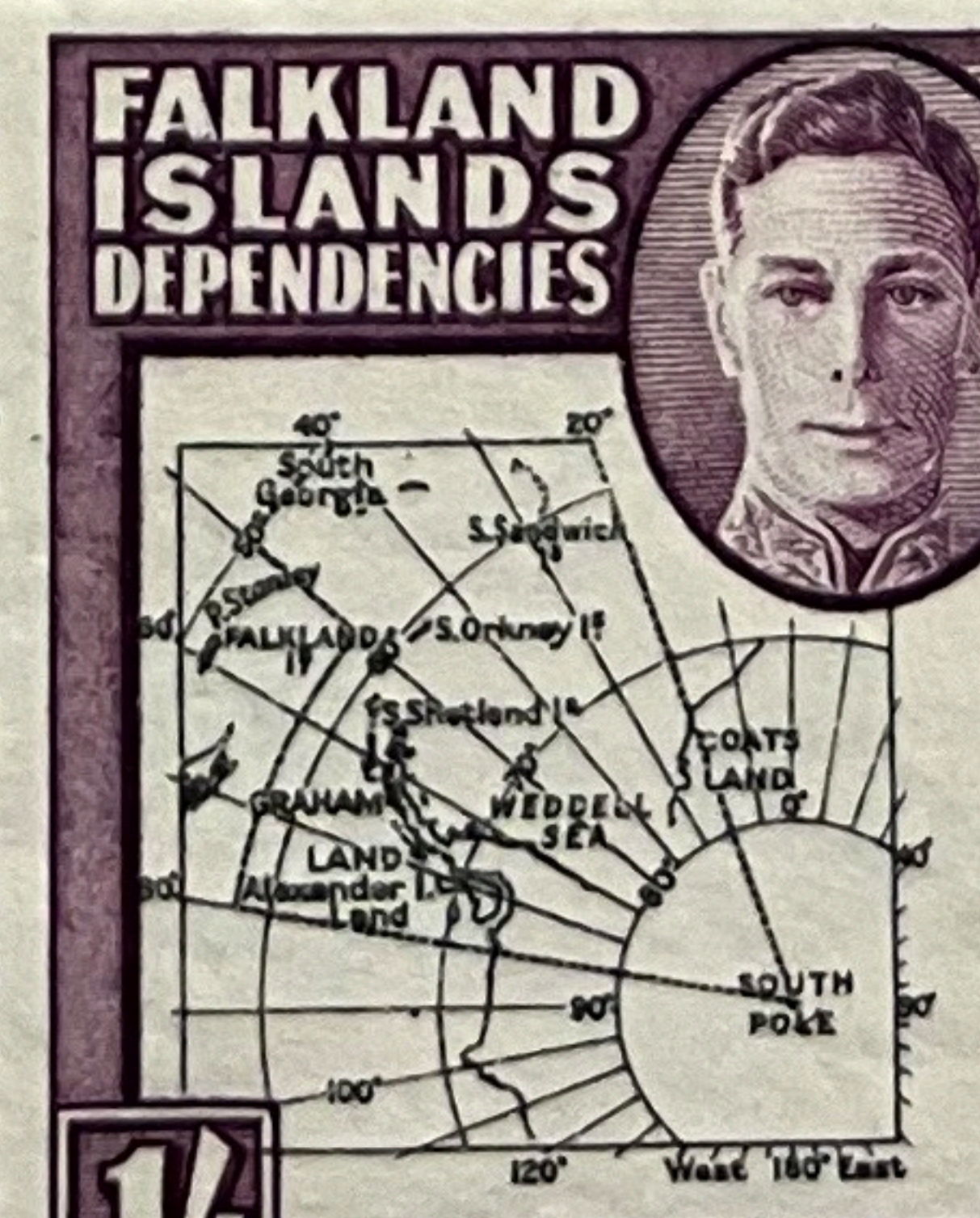
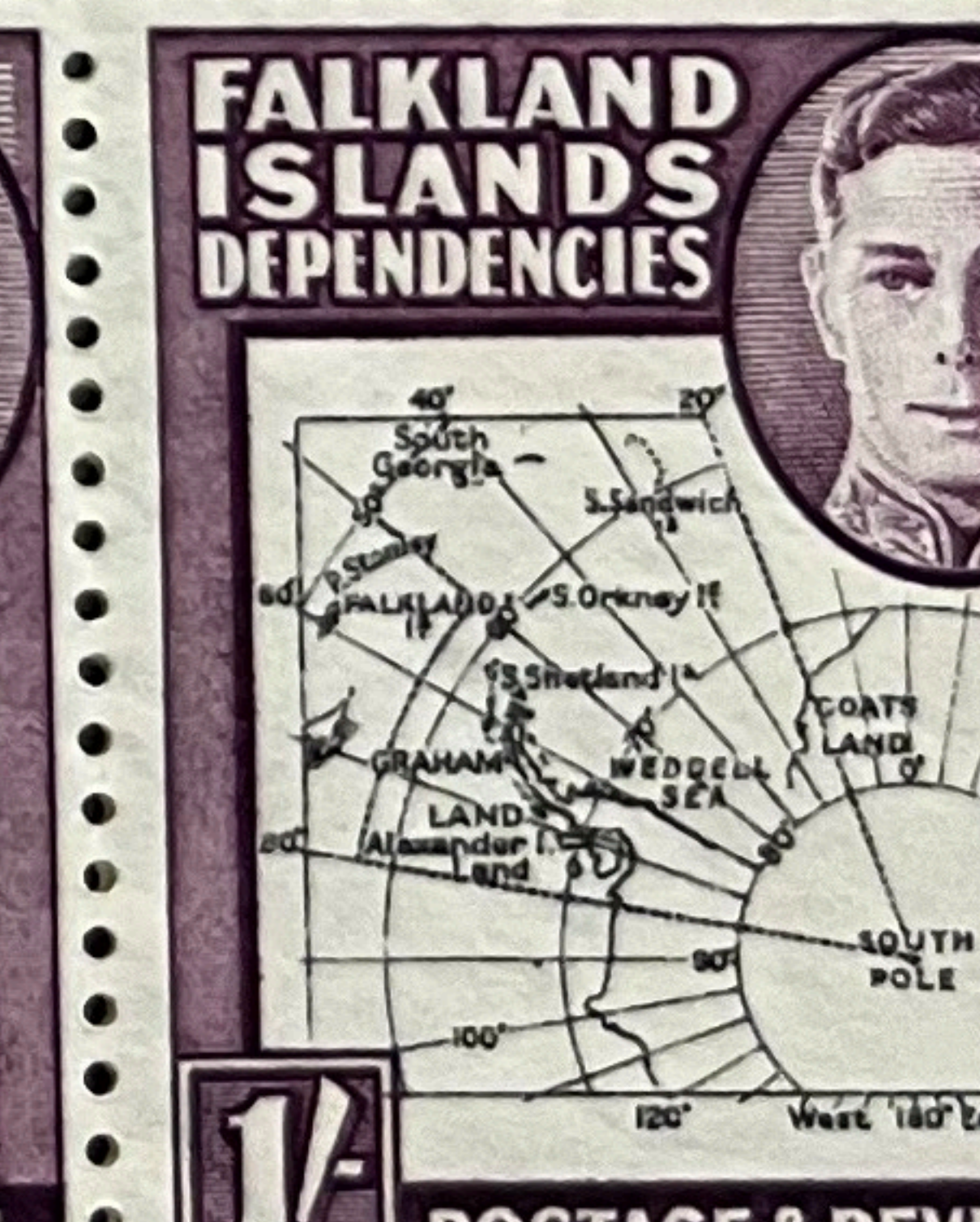
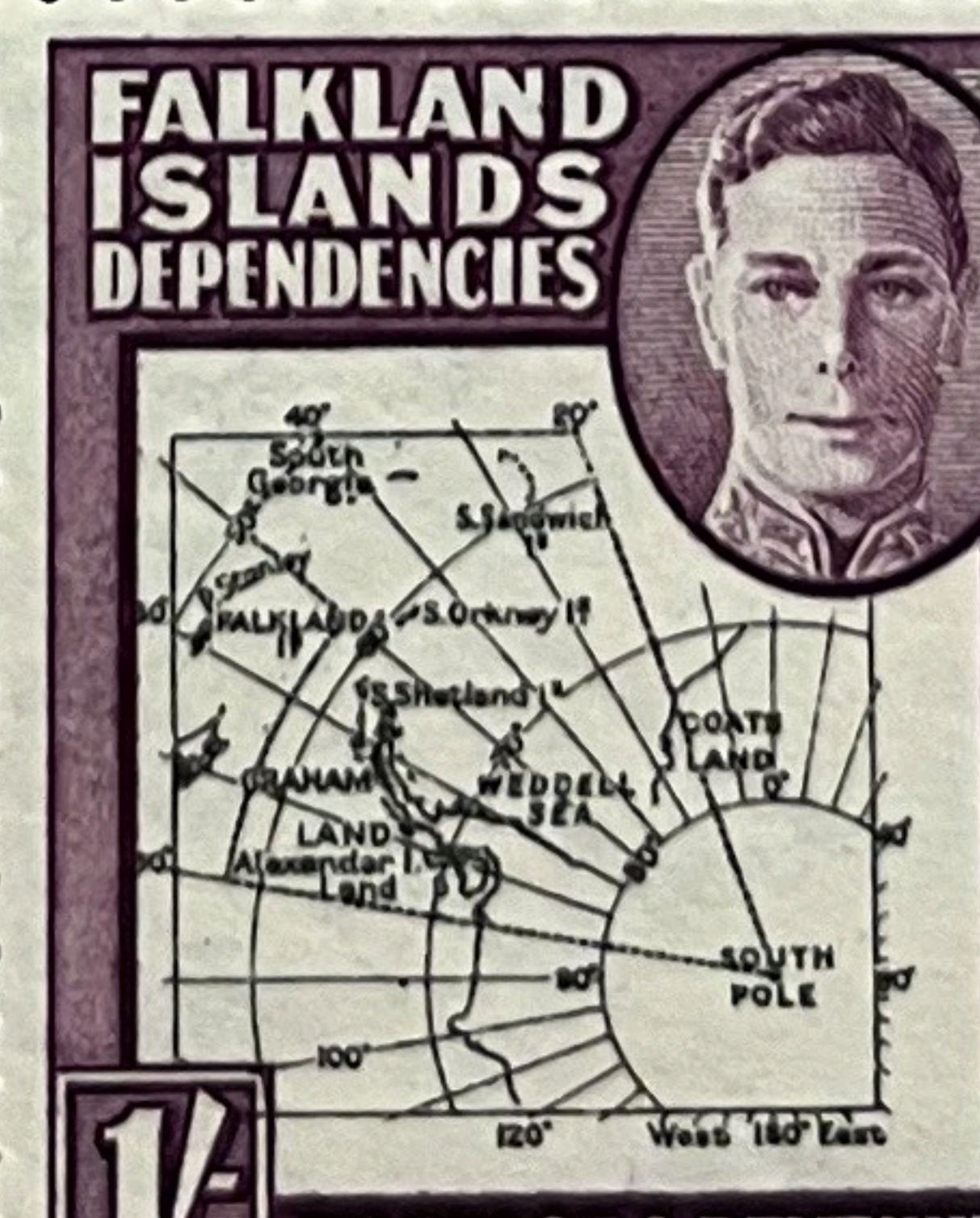
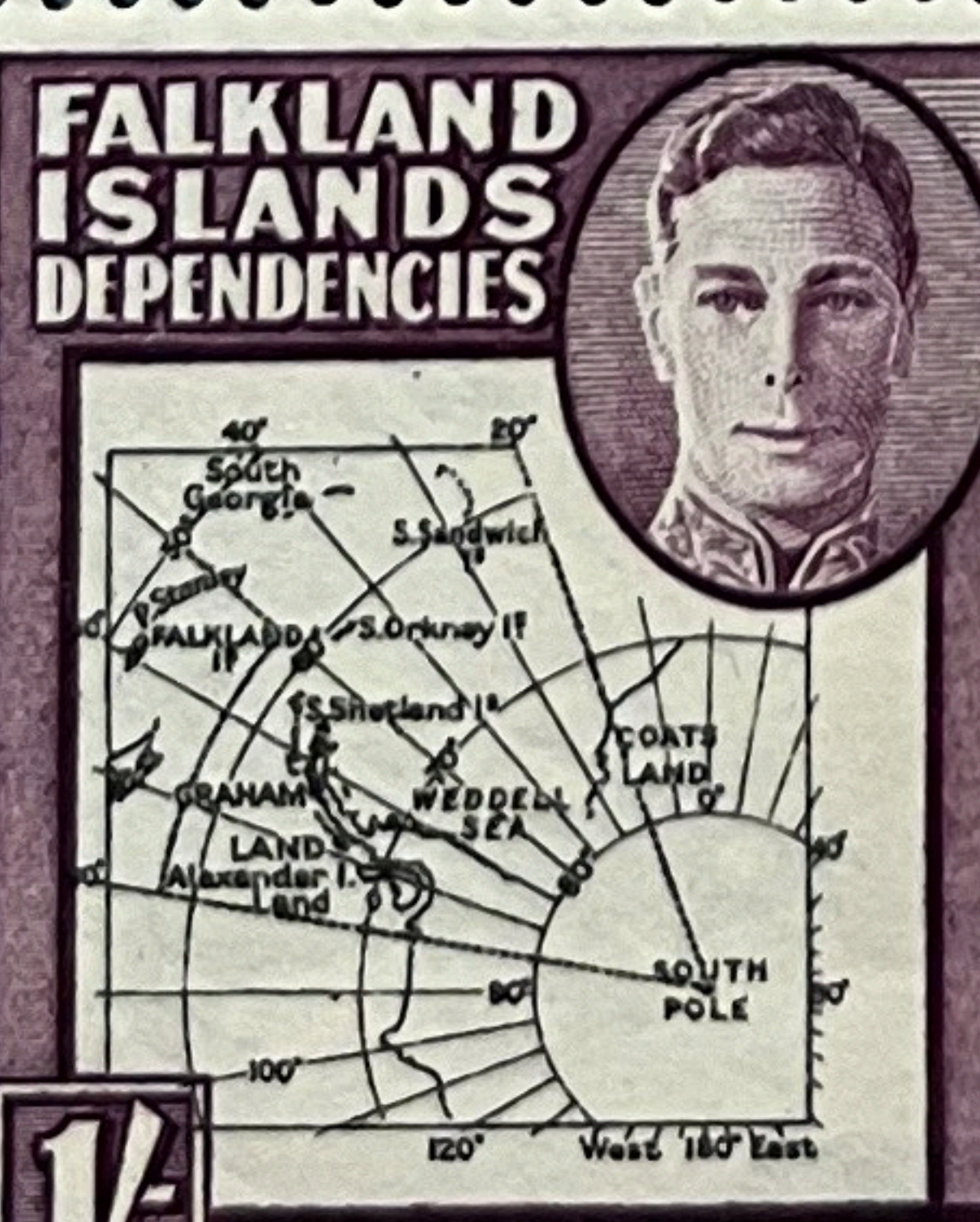
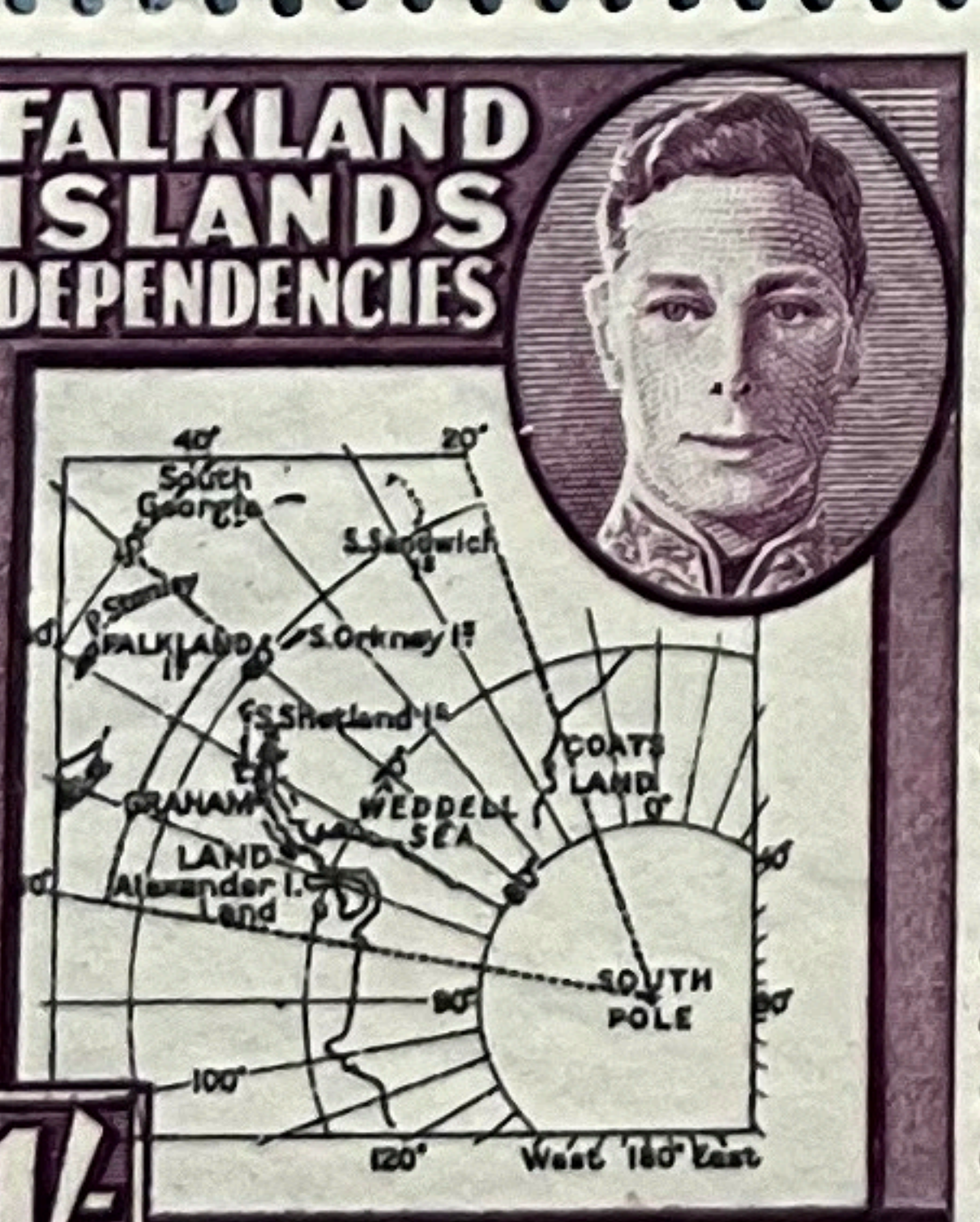
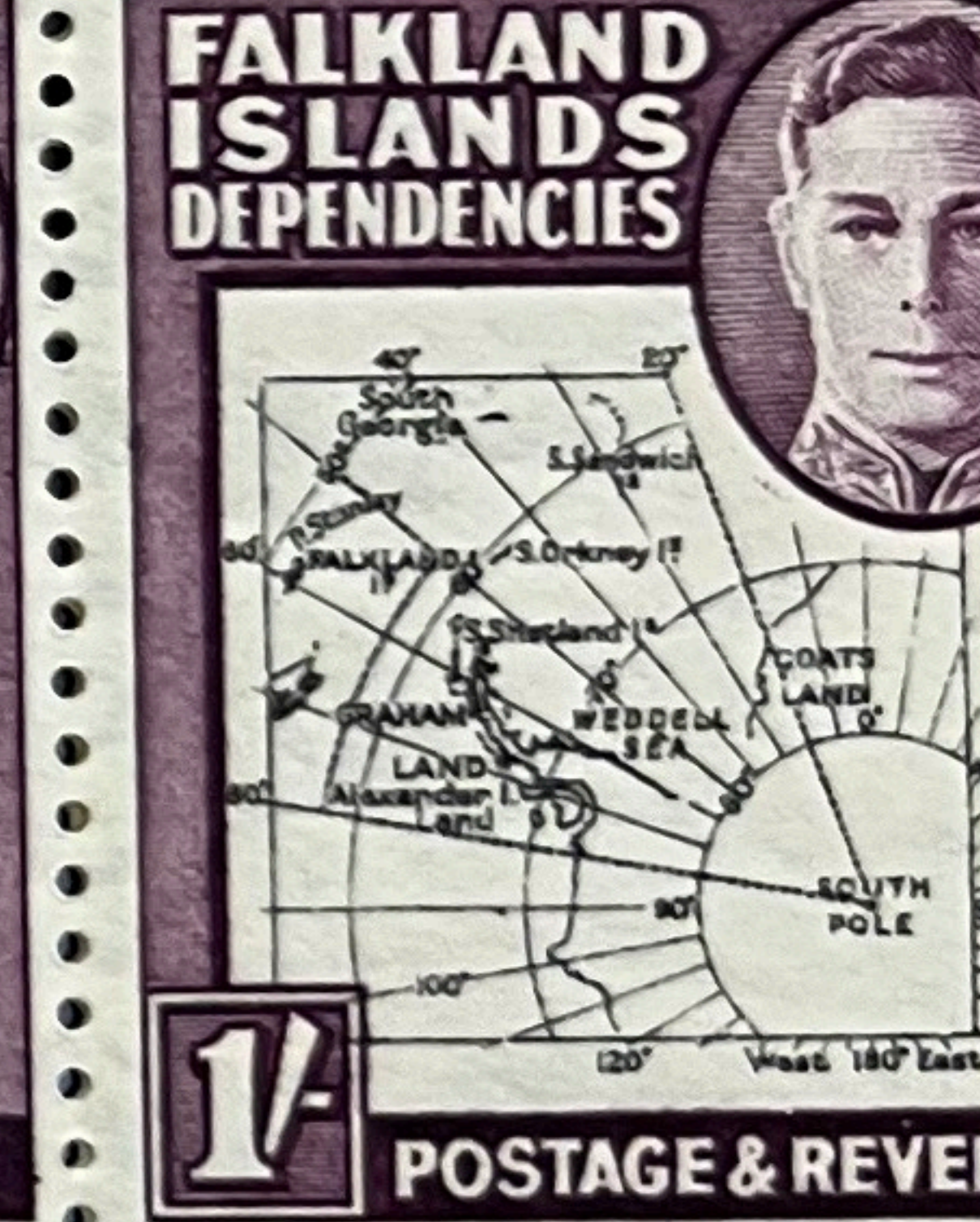
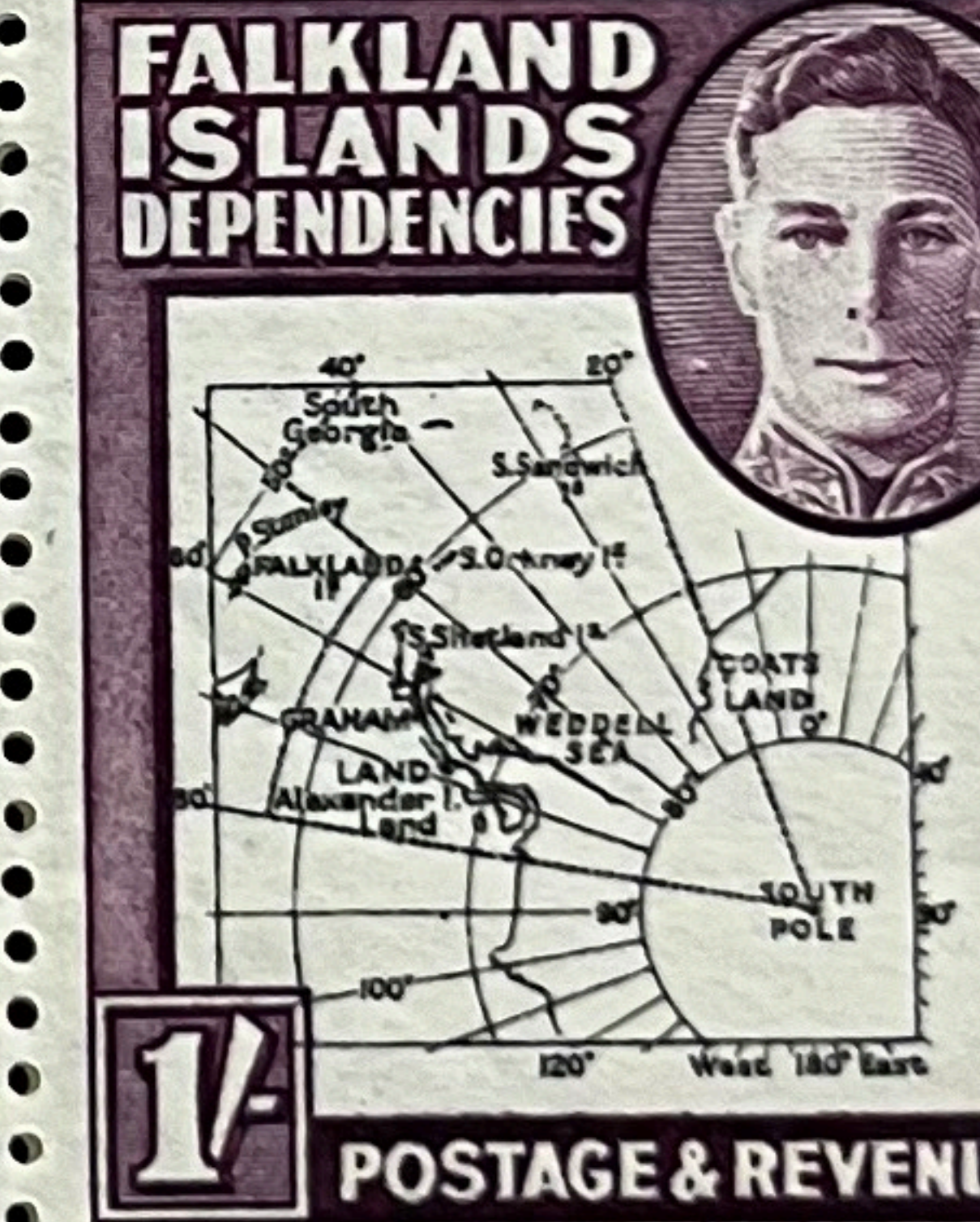
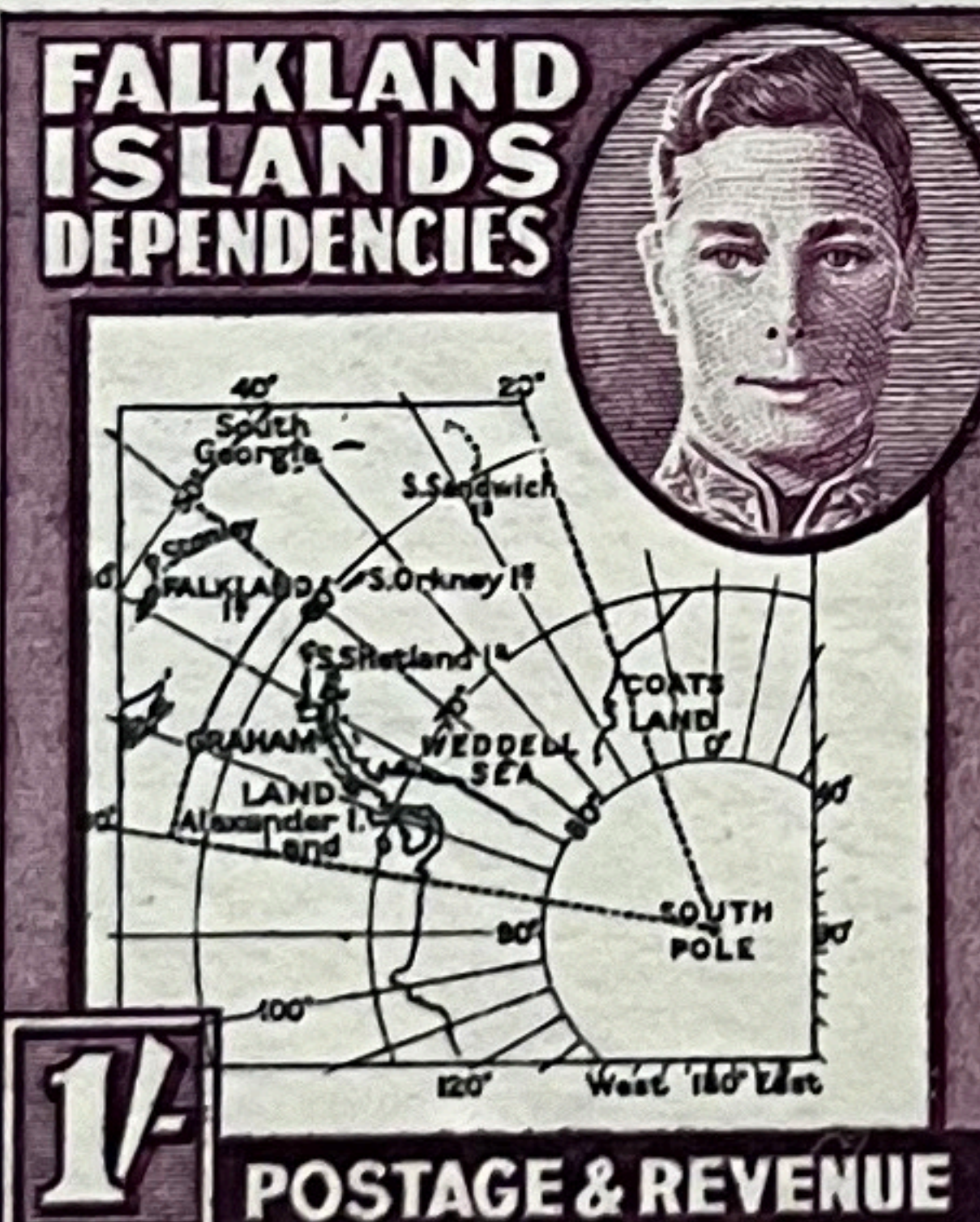
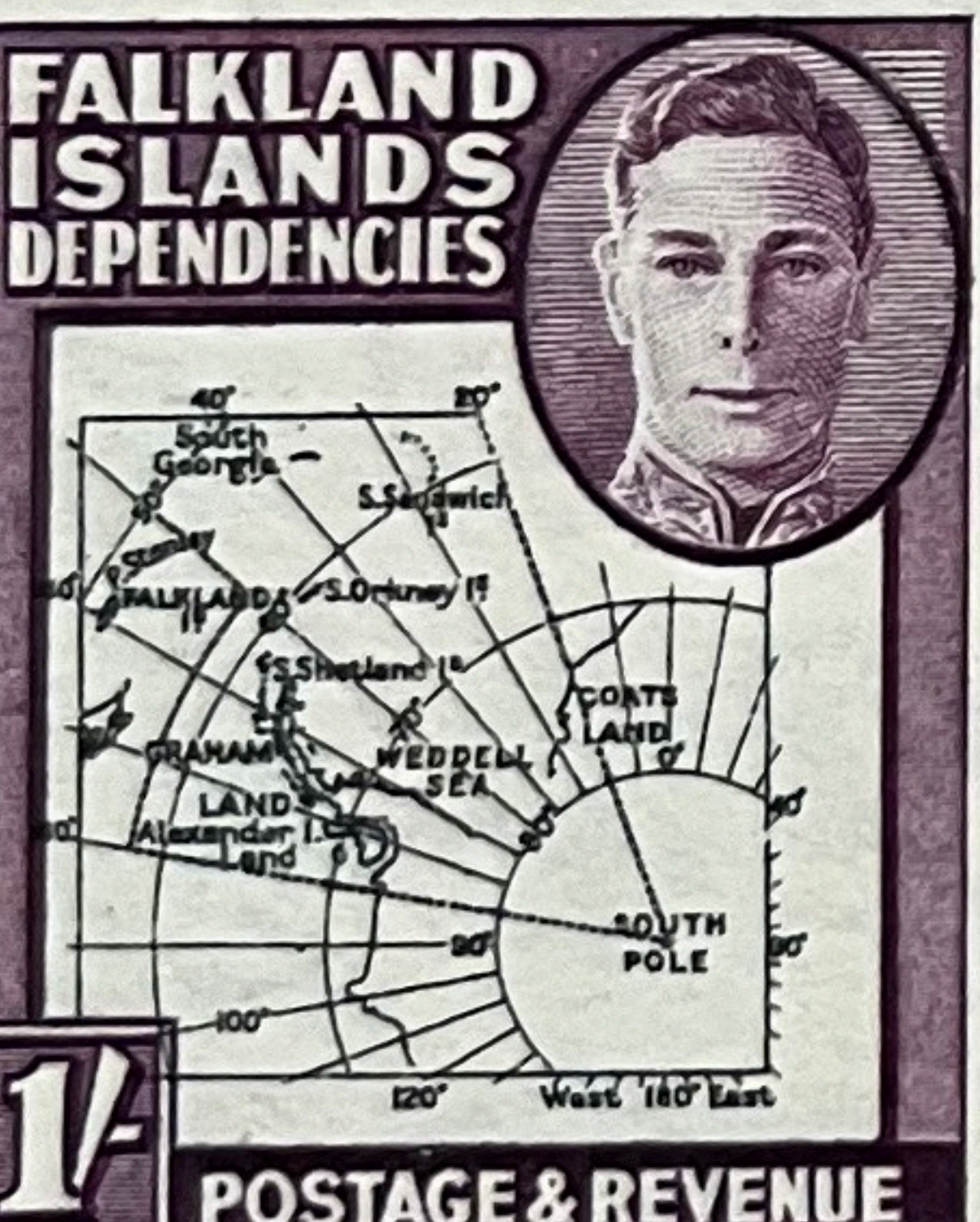
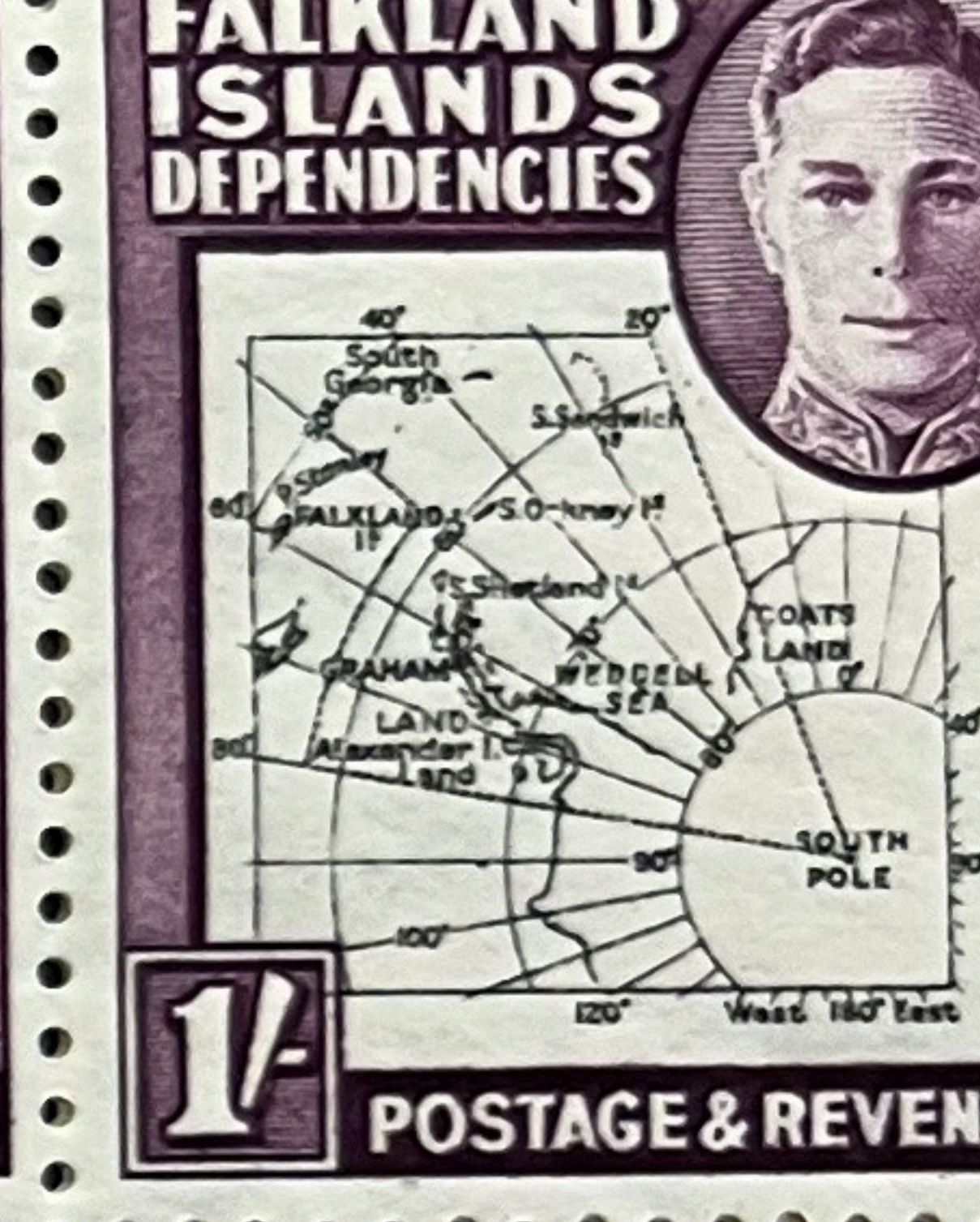
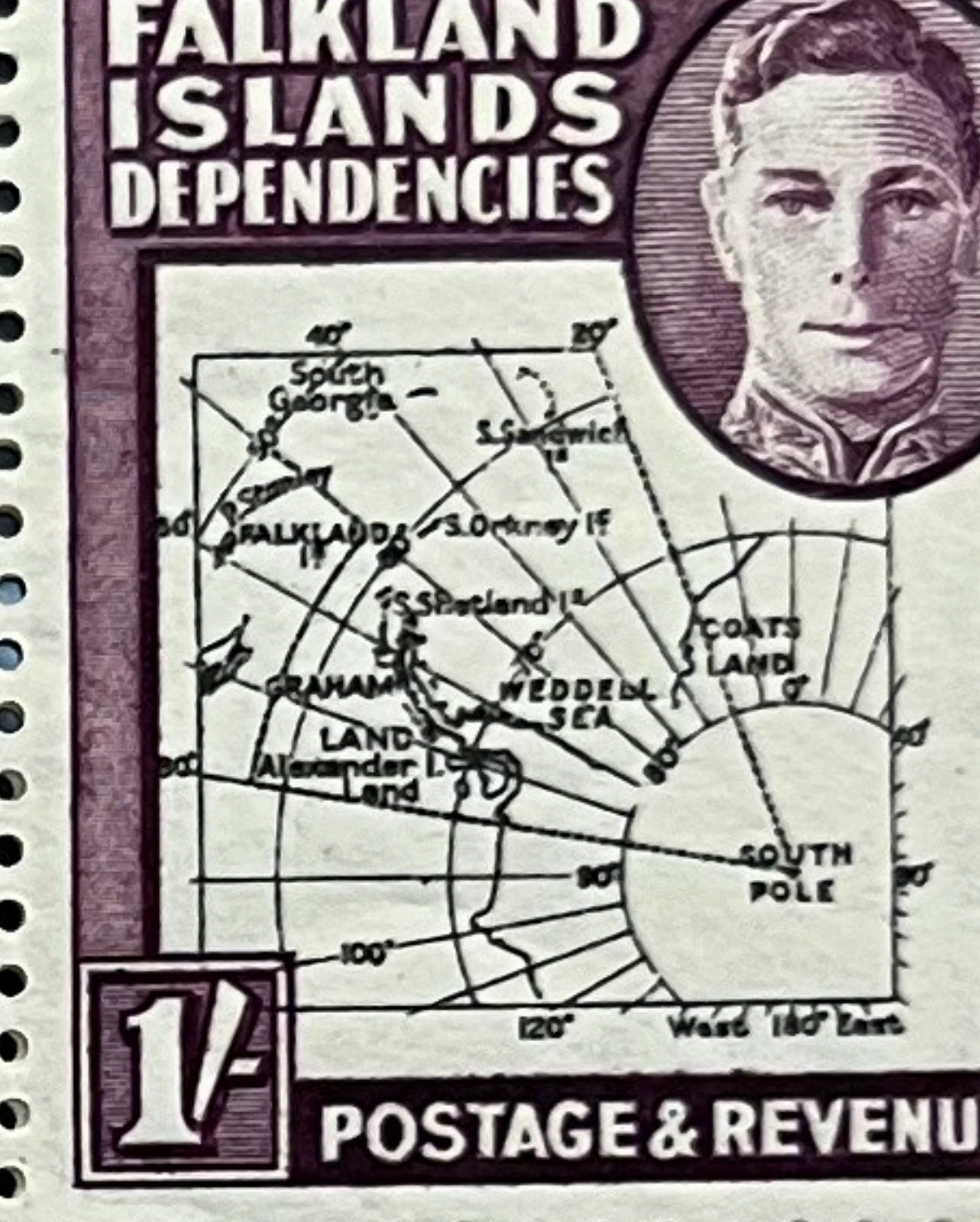
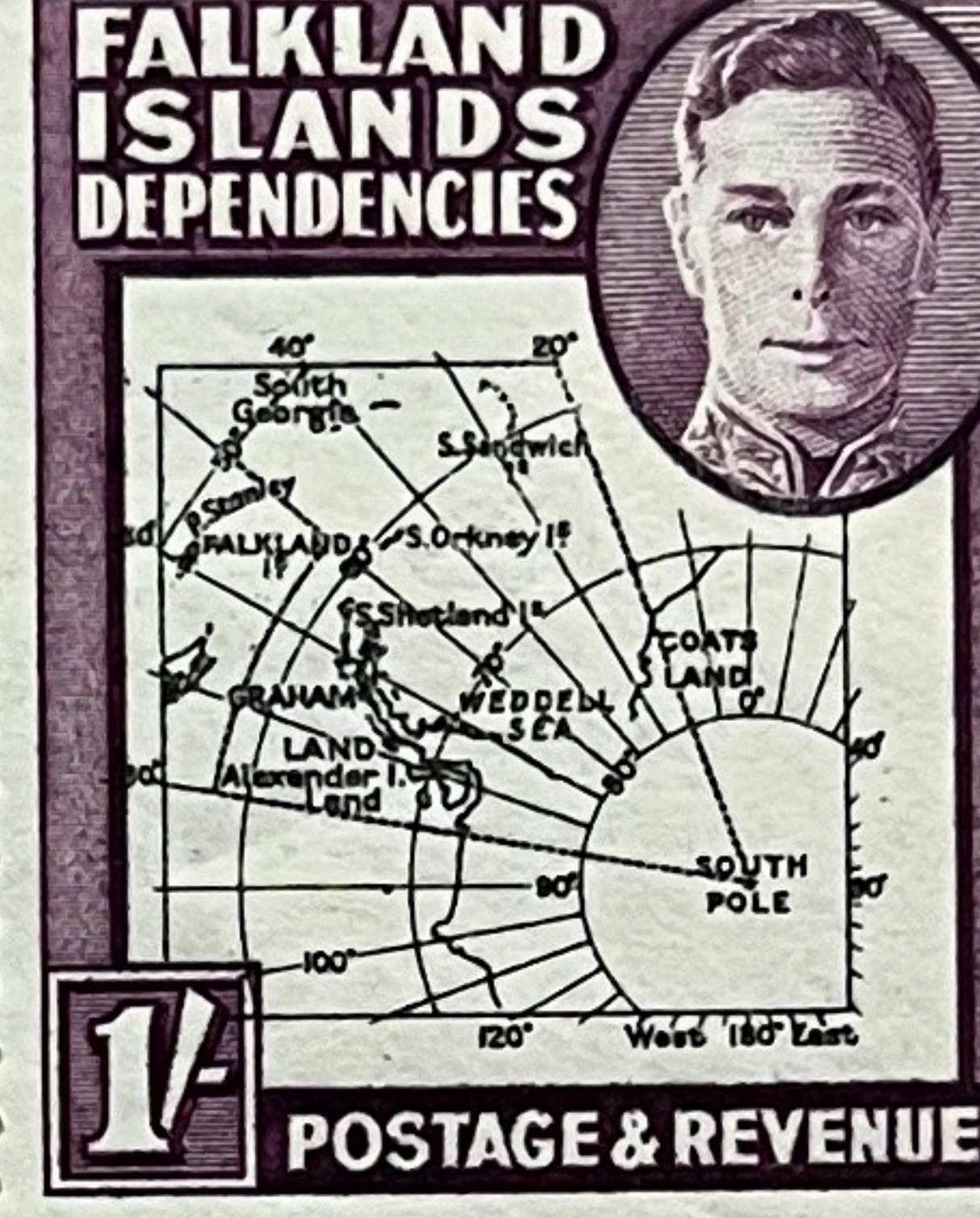
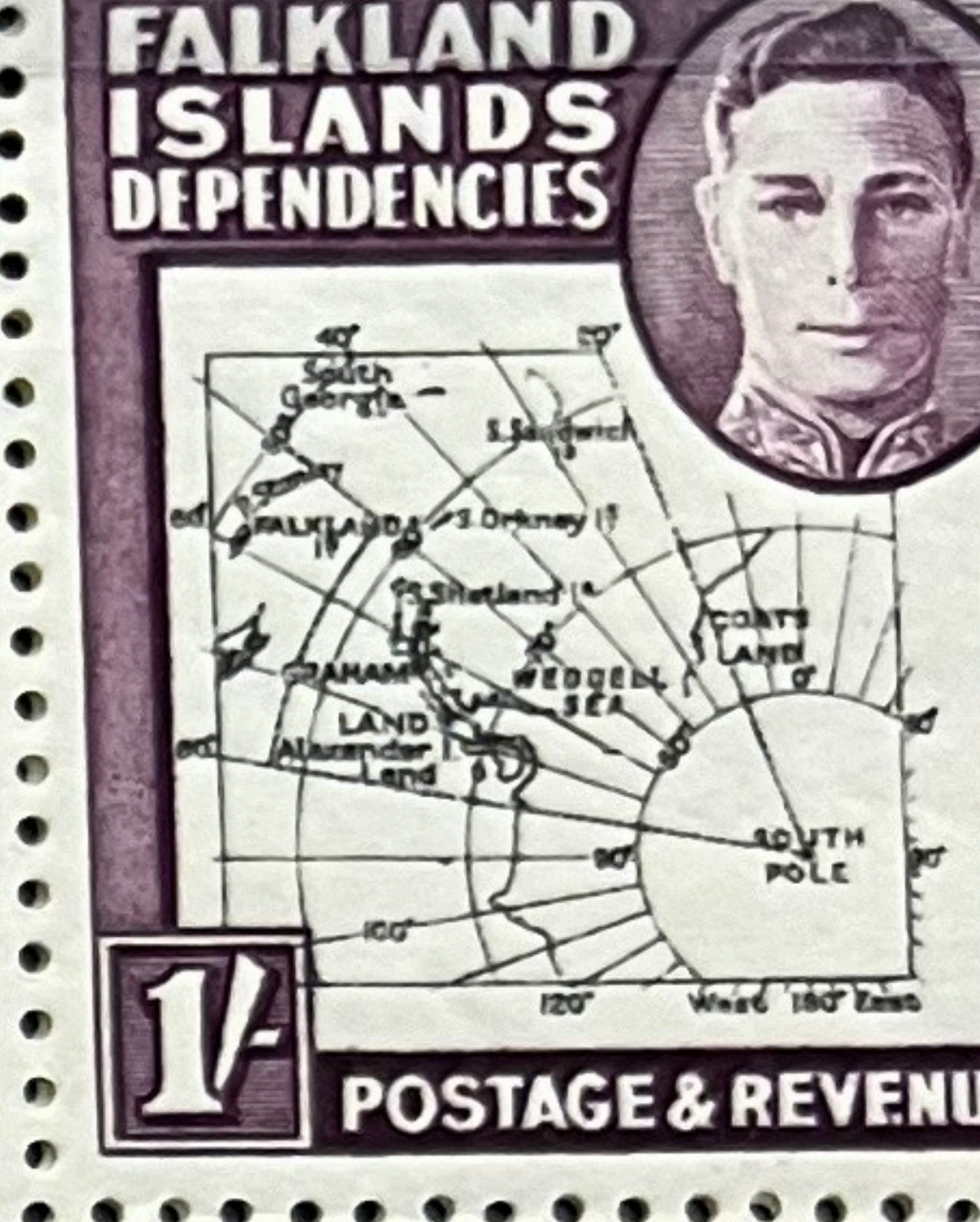
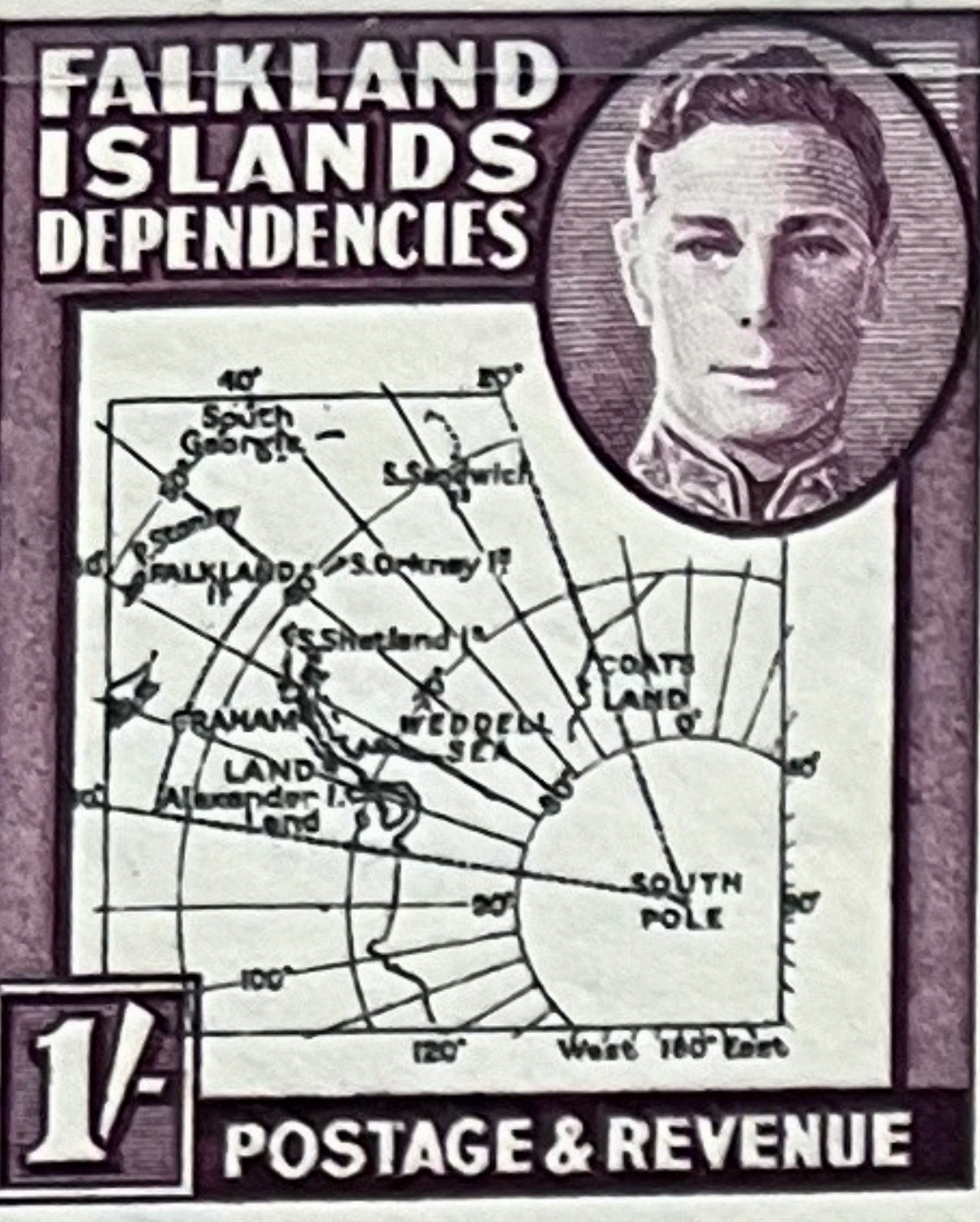
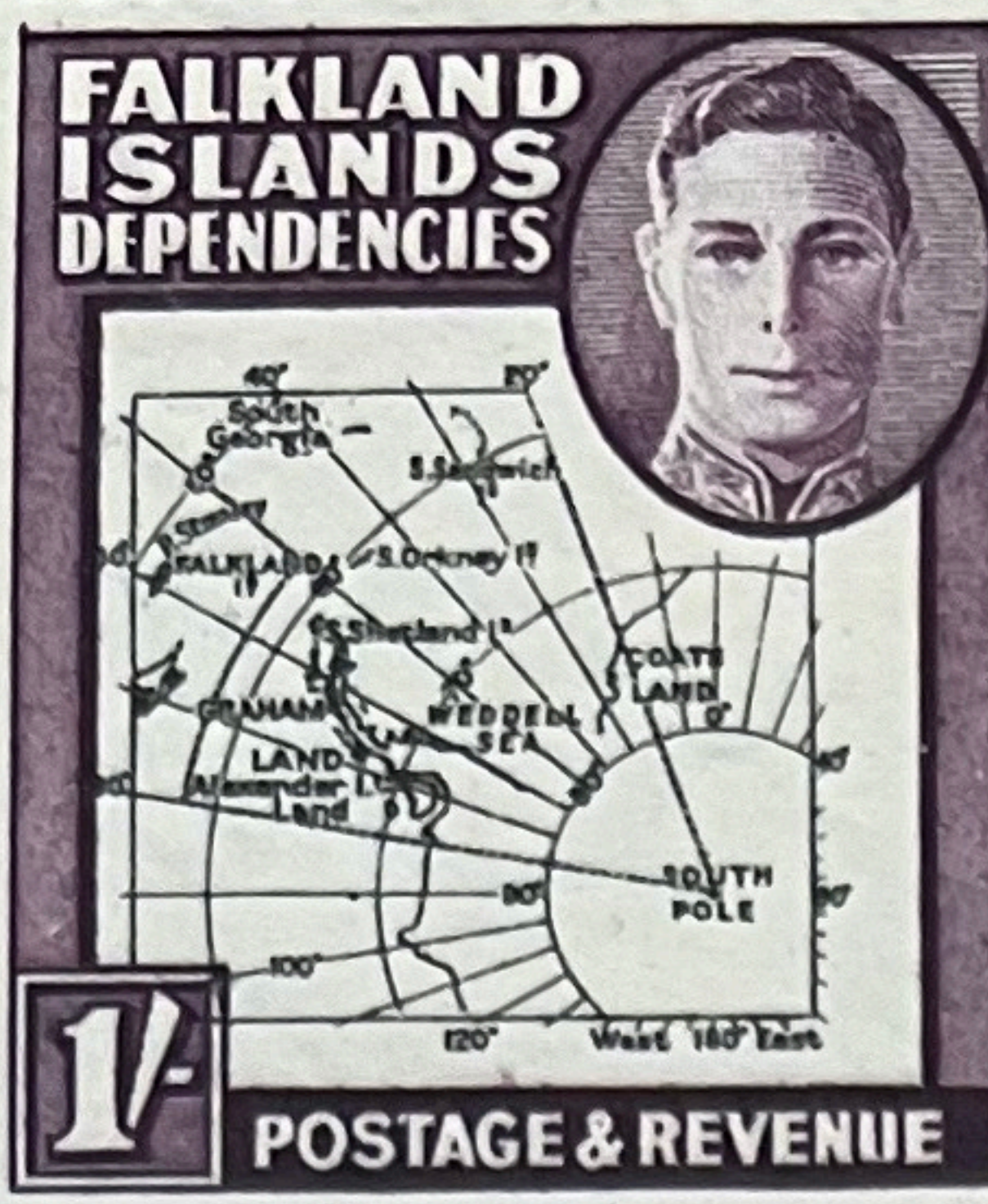
no. J. W. Campbell
 Stanley
 F. I. Islands



SG G6e
 OCHRE
 USED FROM
 SOUTH
 SHETLANDS
 E97 + E20



SG 69-76
 + VARS
 DOT IN
 "T"
 £709





THOMAS DE LA RUE & COMPANY, LIMITED, LONDON

1A





THOMAS DE LA RUE & COMPANY, LIMITED, LONDON

IA

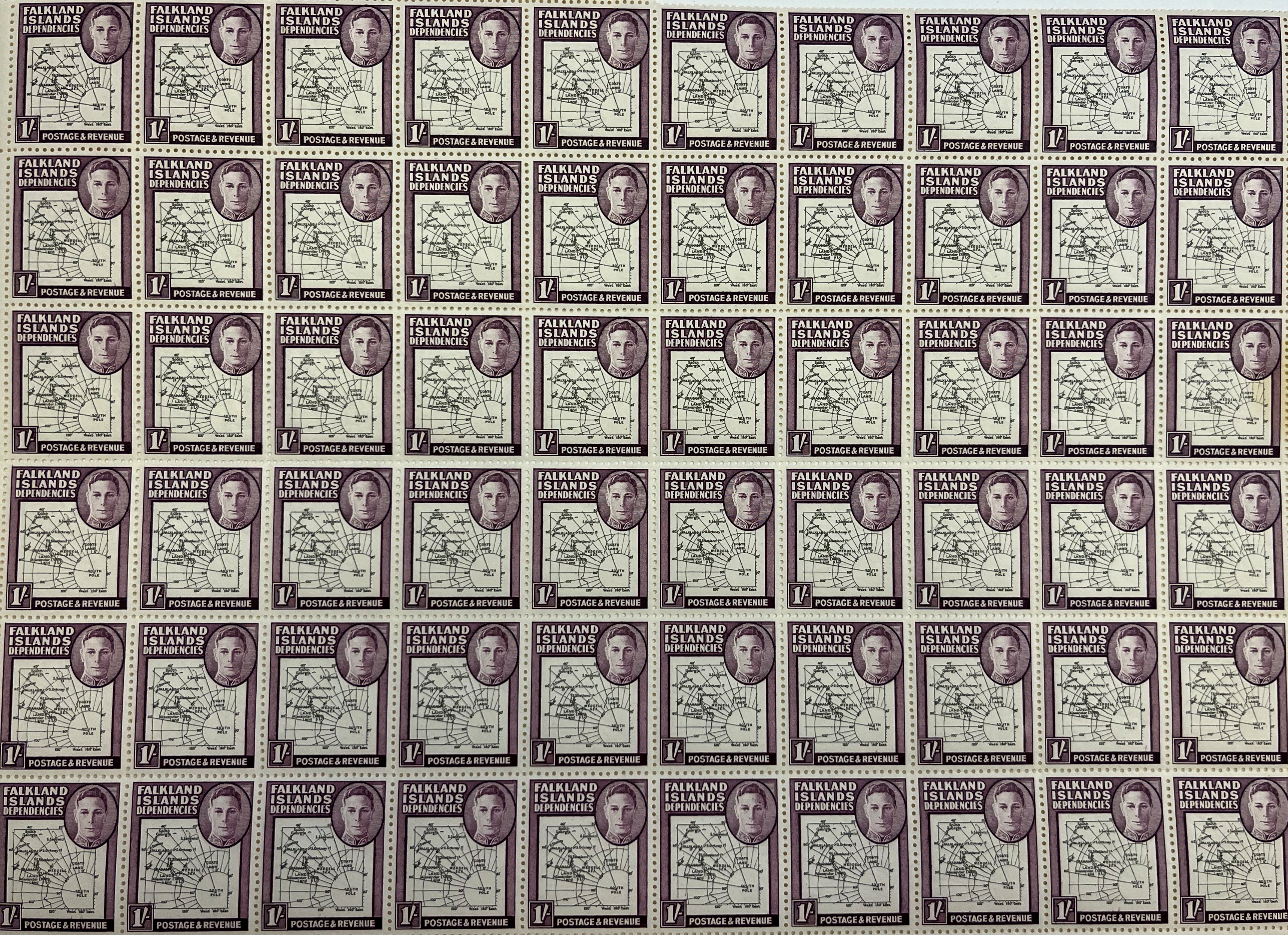


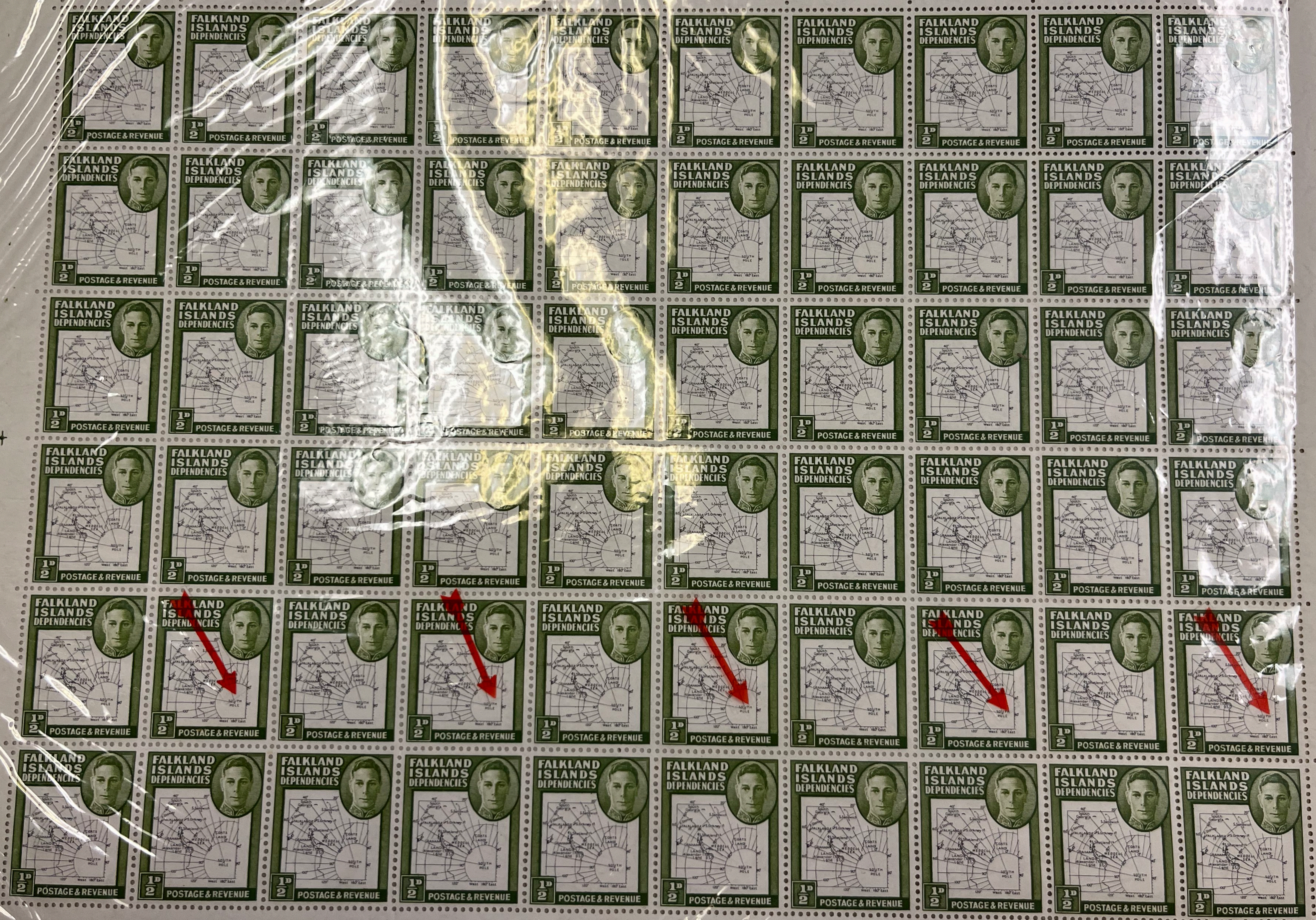




THOMAS DE LA RUE & COMPANY, LIMITED, LONDON

1A





THOMAS DE LA RUE & COMPANY, LIMITED, LONDON