

Colour Chart

for

Colonial Key Plate Stamps

surface printed by

Thos. De La Rue & Co.

by

M.N.Oliver, FRPSL.



1890

Key Plate in DF Mauve or Green

D1



Green

D2



Carmine-rose

D3



Blue

D4



Orange

D5



Brown

D6



Grey-slate

D7



Carmine-rose

D8



Blue

D1a

D3a

D1b



D3b

D2a

D2b



D4a

1890-1911

1912-22

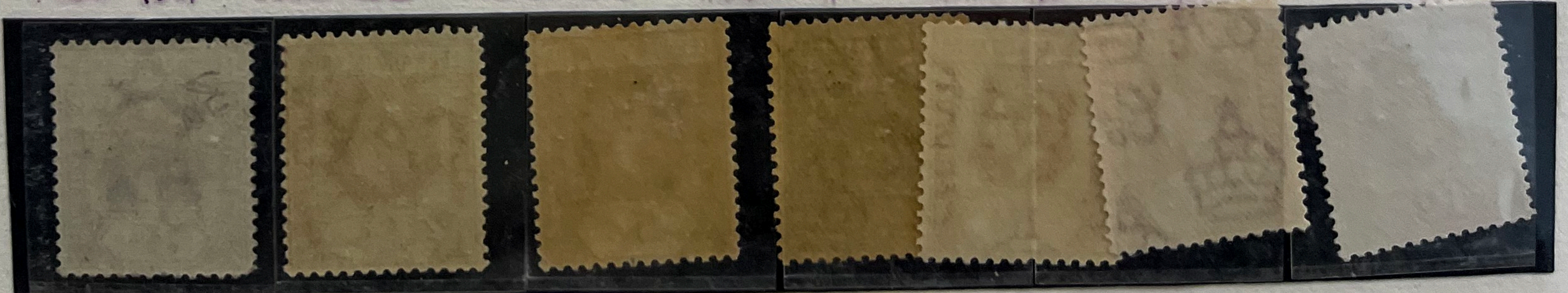
1923-35

1936-41

1942-43

1944-48

1949-56



Catalogued flaws, 1890–1938



D1a – Final 'S' broken
KP3 – 5/6



D1b – Final 'S' sliced
KP3 – 6/1



D2a – Feint first 'L'
KP? – 4/6



D2b – Small final 'S'
KP3 – 8/5



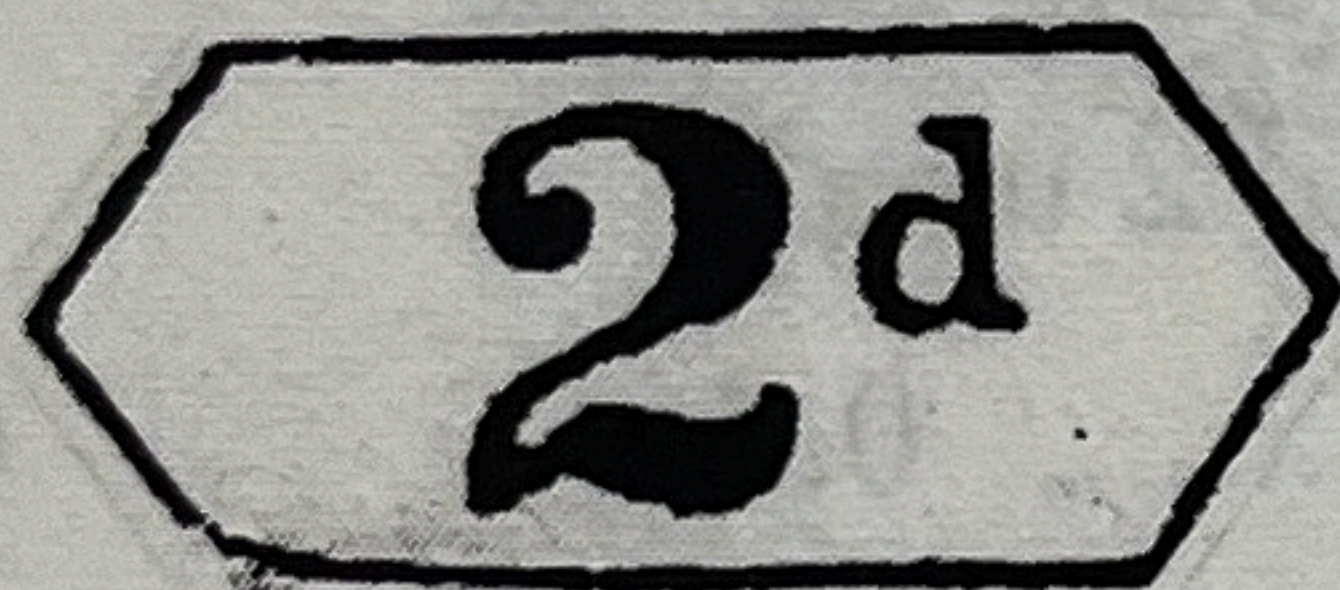
D3a – Damaged first 'L'



D4a – Broken final 'S'
KP1 – ?/6



D13a – Bent 'DIS' & small final 'S'
KP1 & 2 – 1/1



D14a – Bent value tablet
KP1 & 2 – 3/1 & 7/4



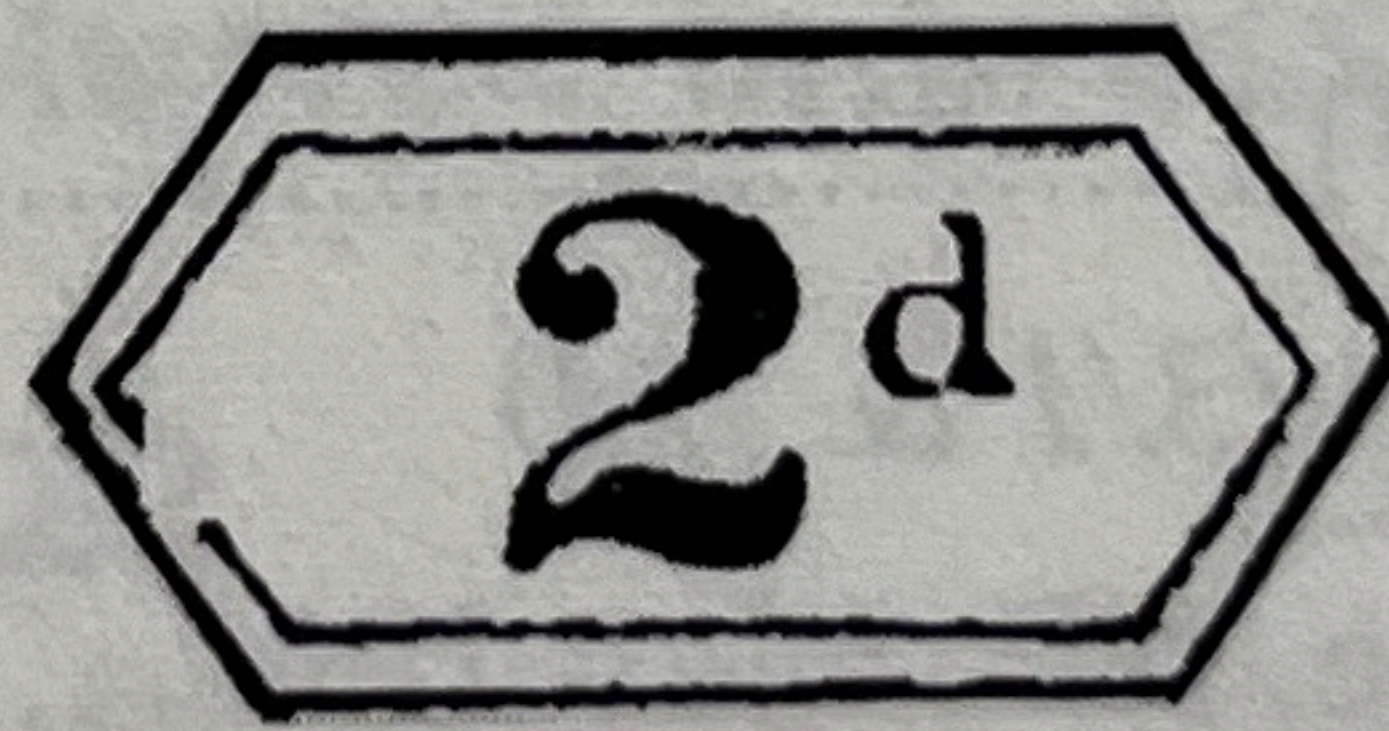
D15a – Wide 'A'
KP1 & 2 – 6/1



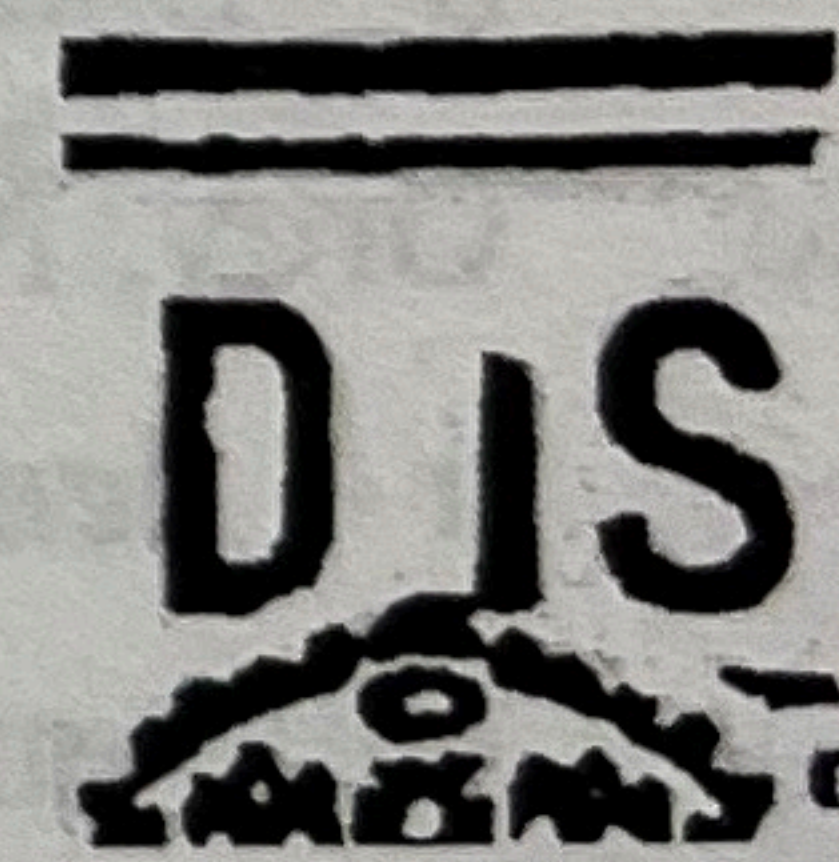
D18a – Dropped 'R'
KP2 – 1/1



D38a – Broken final 'S'
KP1 to 21 – 10/5R



D41b – Value tablet break
KP1 – 7/2R



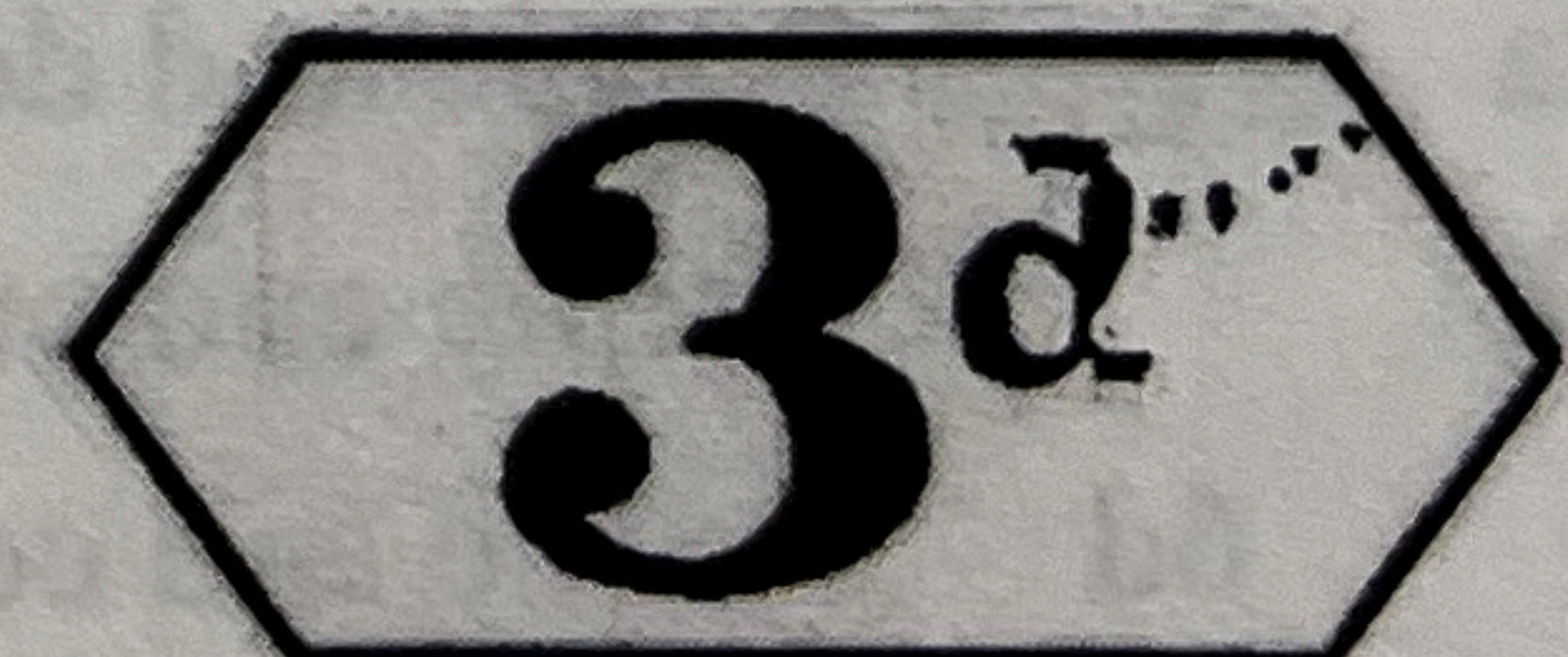
D42c – Short 'T'
KP1 – 2/6L



D42d – Angled first 'L'



D43f – Damaged final 'S'
KP1 – 10/6R



D43ag – Damaged 'd' of 3d
KP1 to 10 – 3/2R



1902

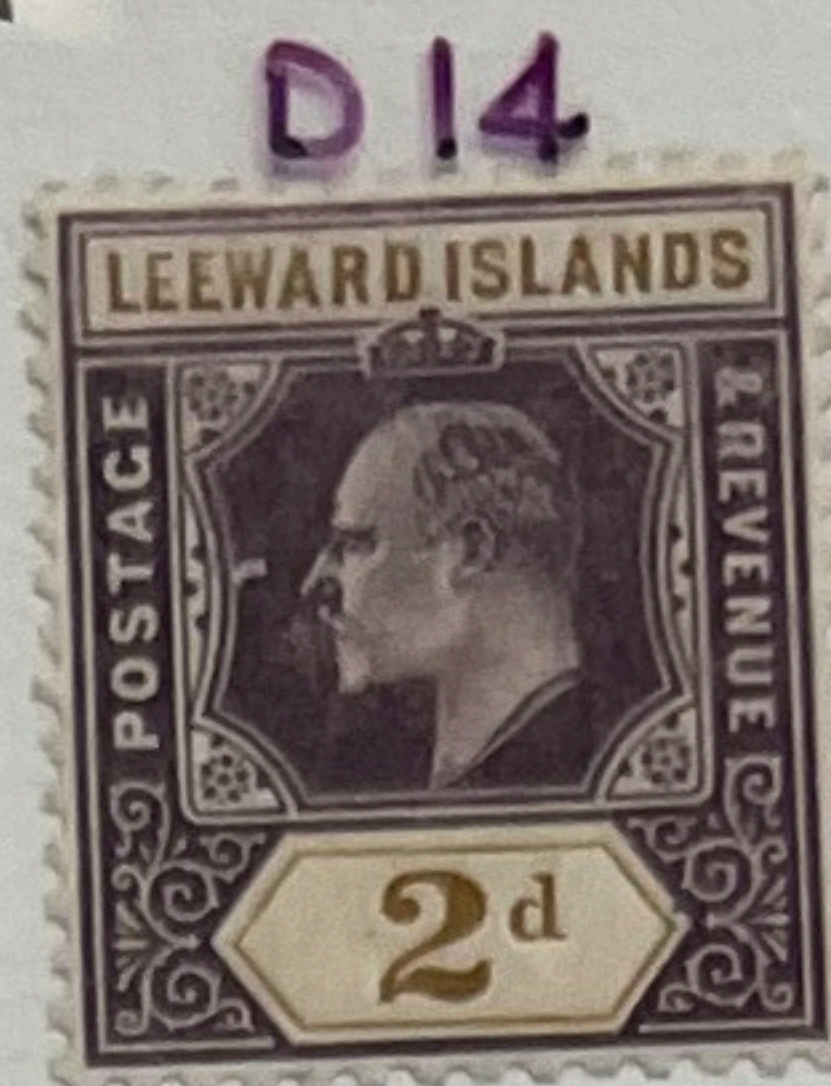
Key Plate in DF Purple or Dull Green



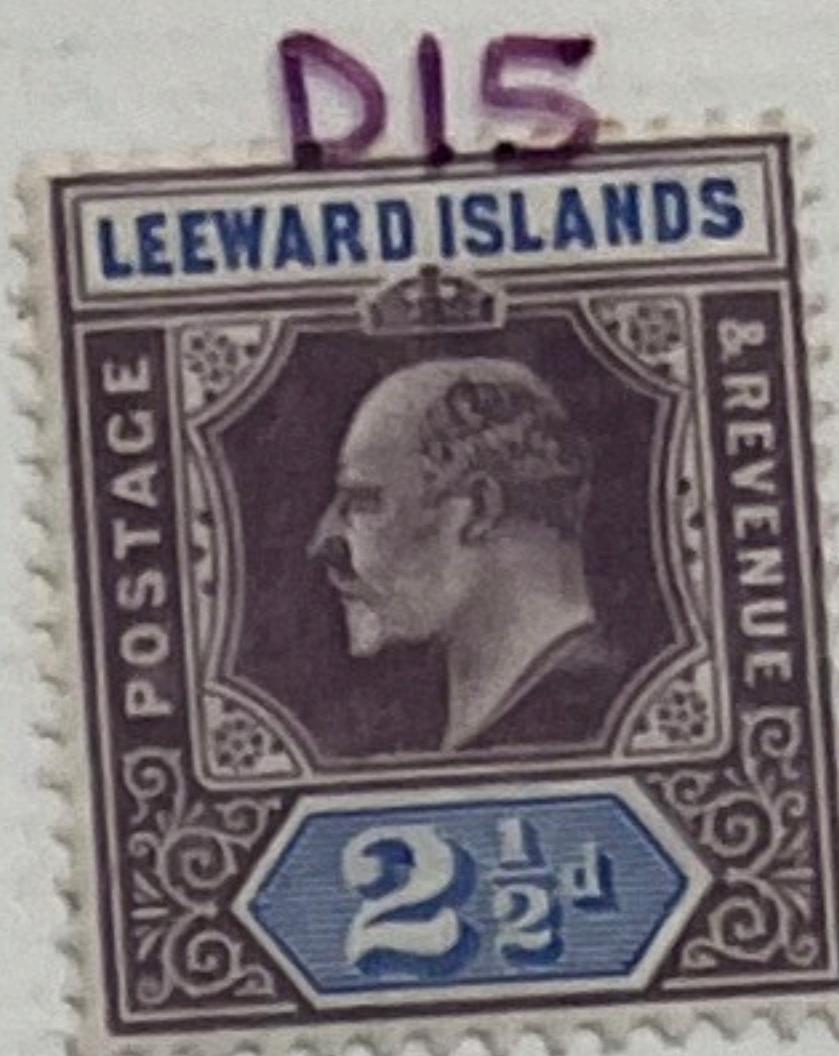
Green



Carmine-rose



Ochre



Blue



Jet



Pale black



Dull Brown



Carmine-rose



Jet



Blue

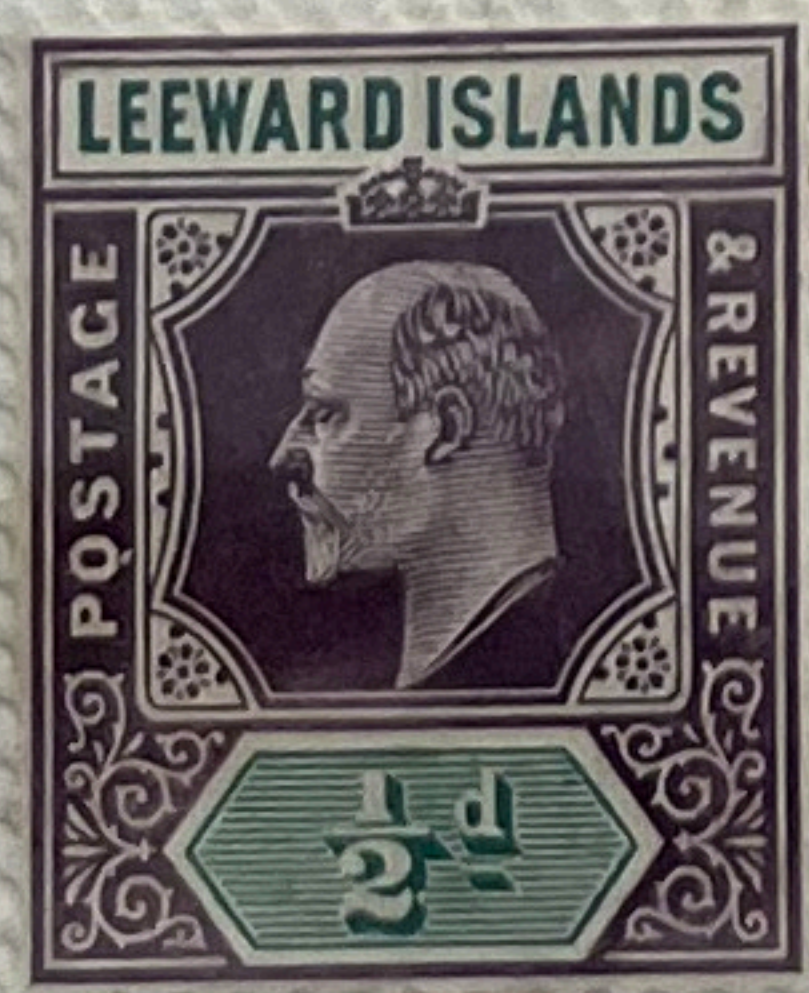
1904-08

Chalk surfaced paper, MCA Wmk (1/2d & 3d also Ordinary paper)

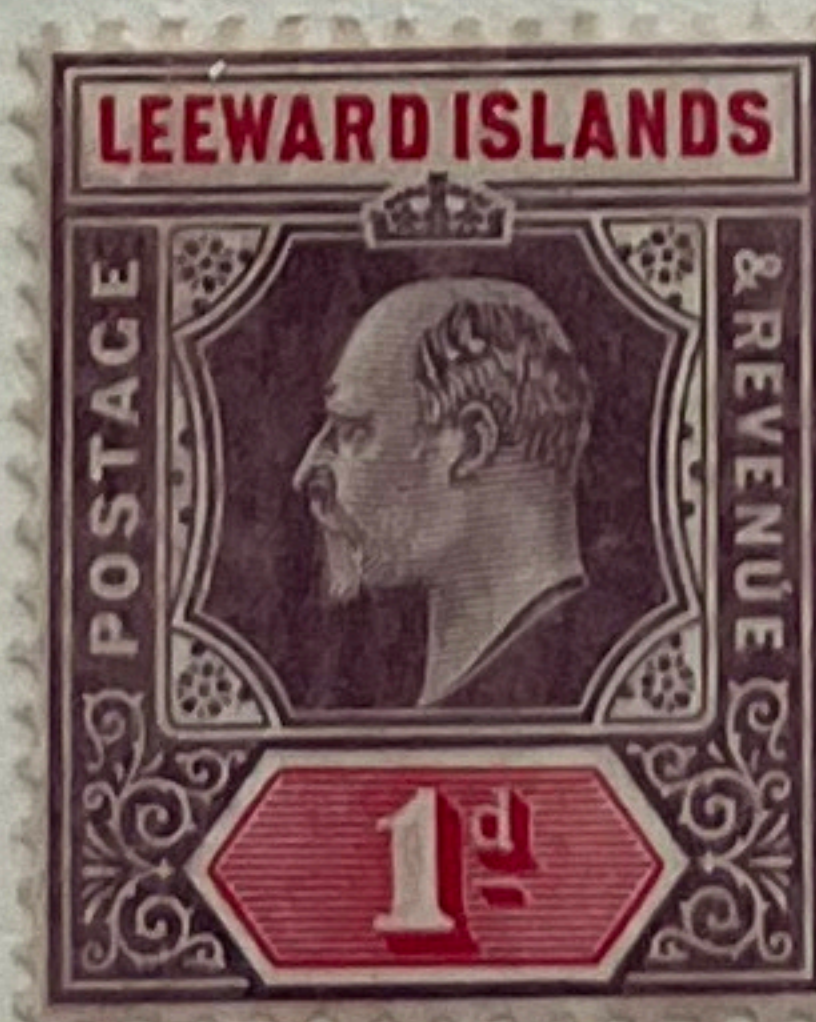
Most with blurred impressions in Purple



D21



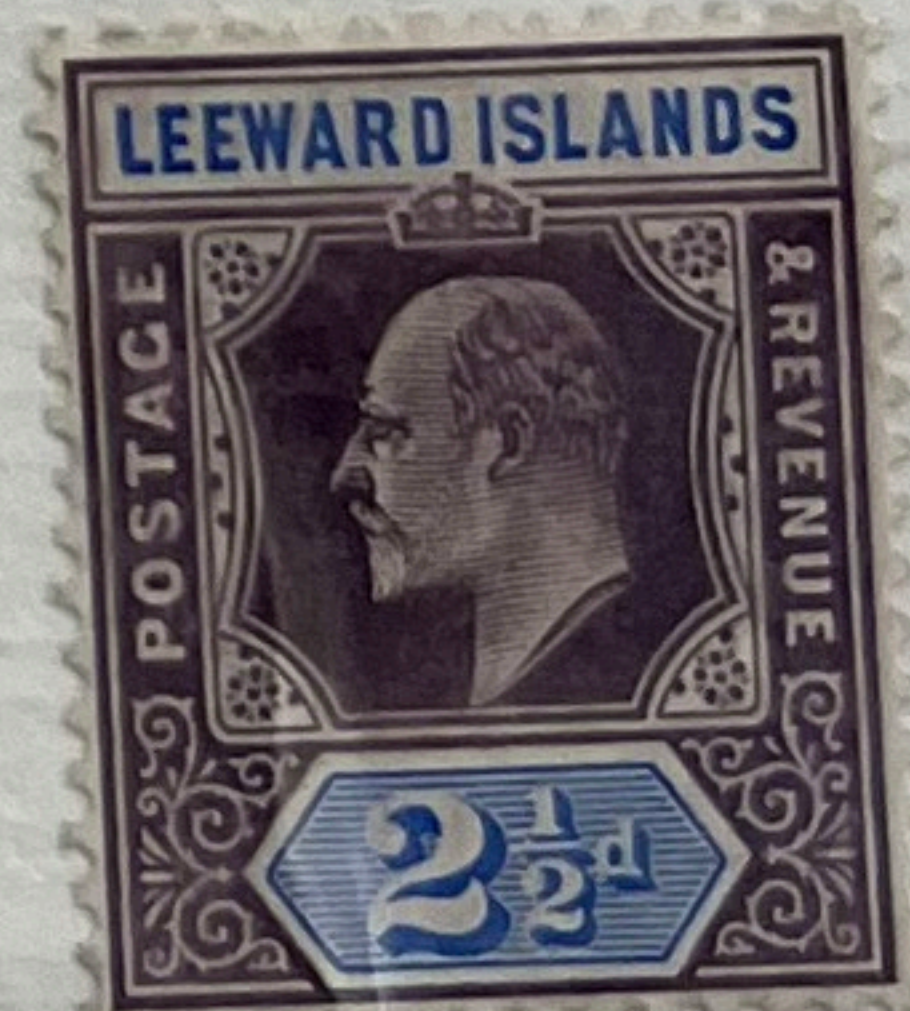
Green



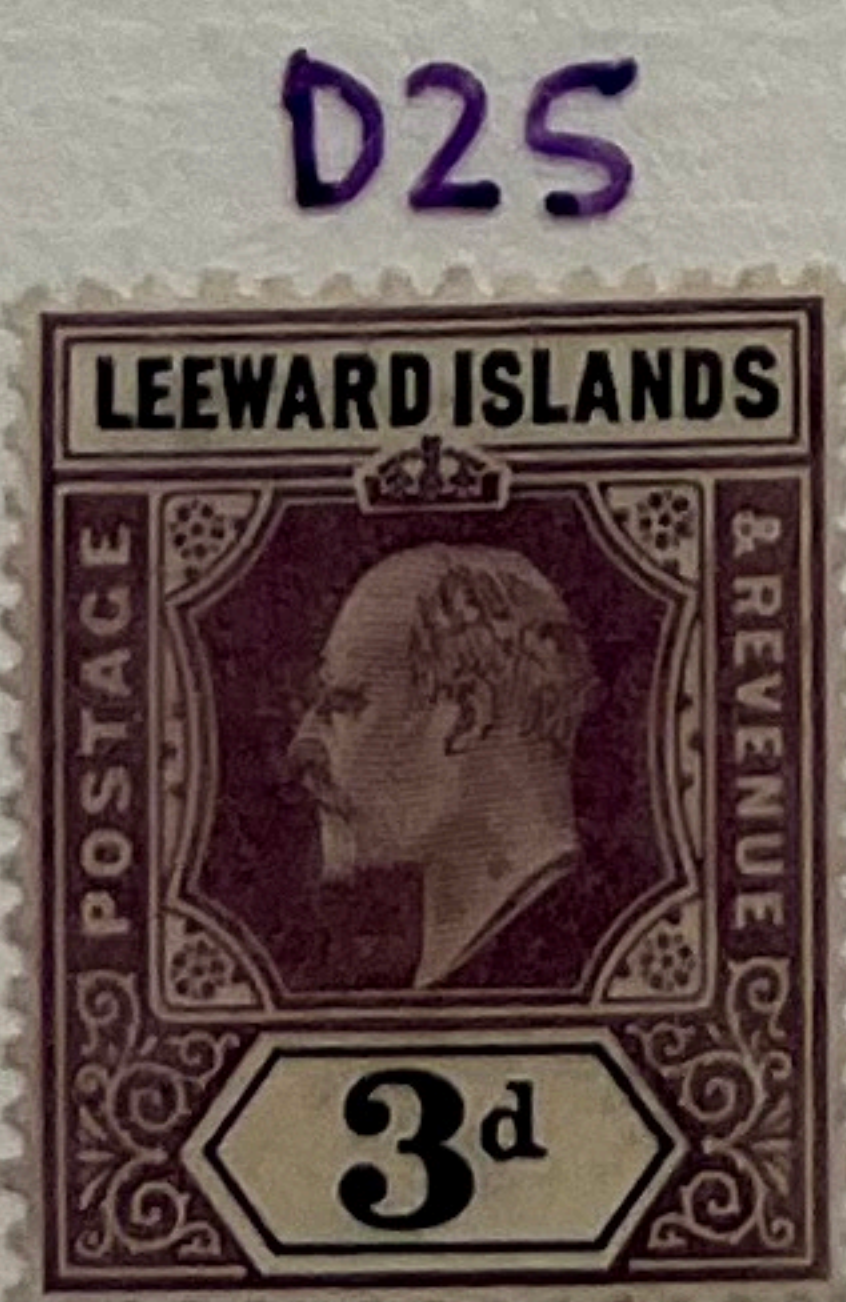
Carmine-rose



Ochre



Blue



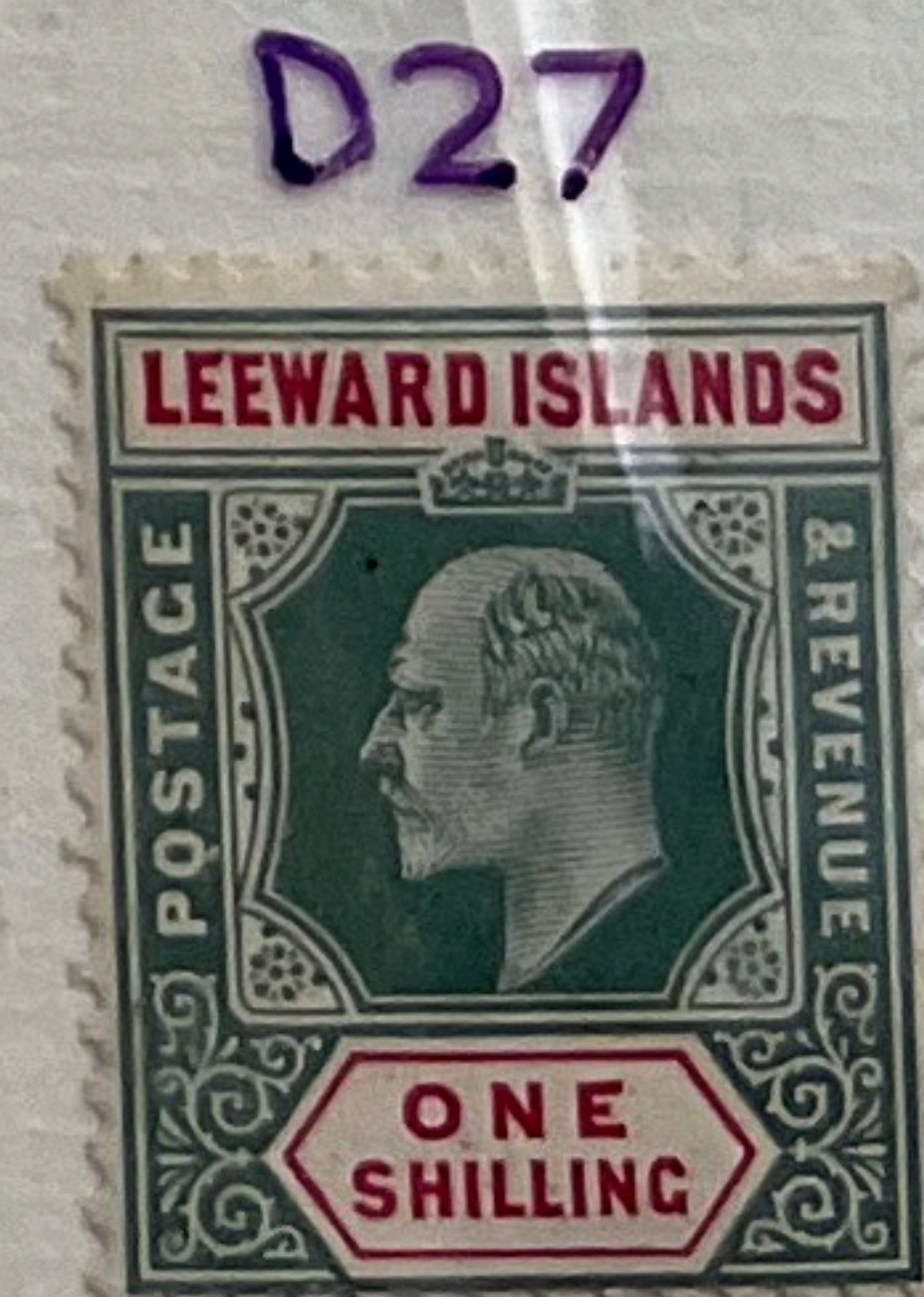
Jet



Pale mauve-purple & Jet(c)



Chocolate



Green & Carmine-rose



1907-11

Universal Colour Scheme

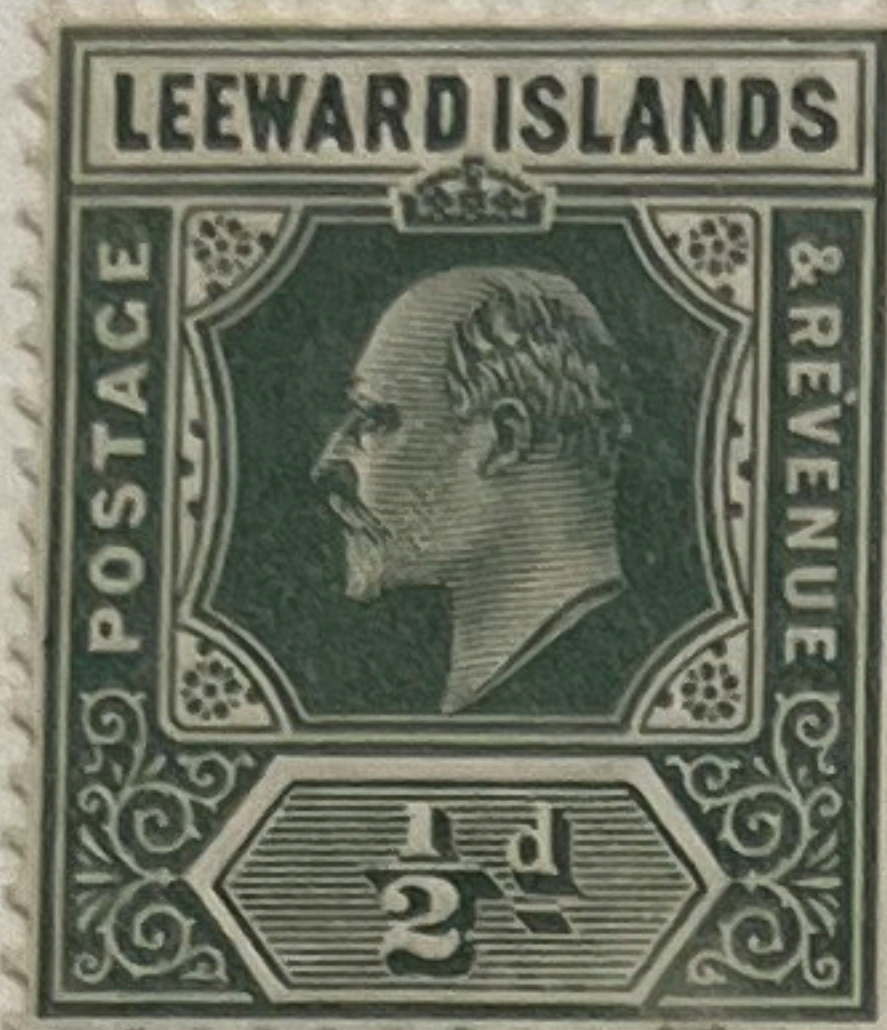
< 3d in SF ink, 3d-5s Key Plate in DF inks

D28



Brown

D29



Green

D30



Red

D30a



Deepish
Rose-red

D31



Grey

D32



Blue &
Ultramarine

D32a



Blue & blue

D33



Polish purple
& purple, B

D33a



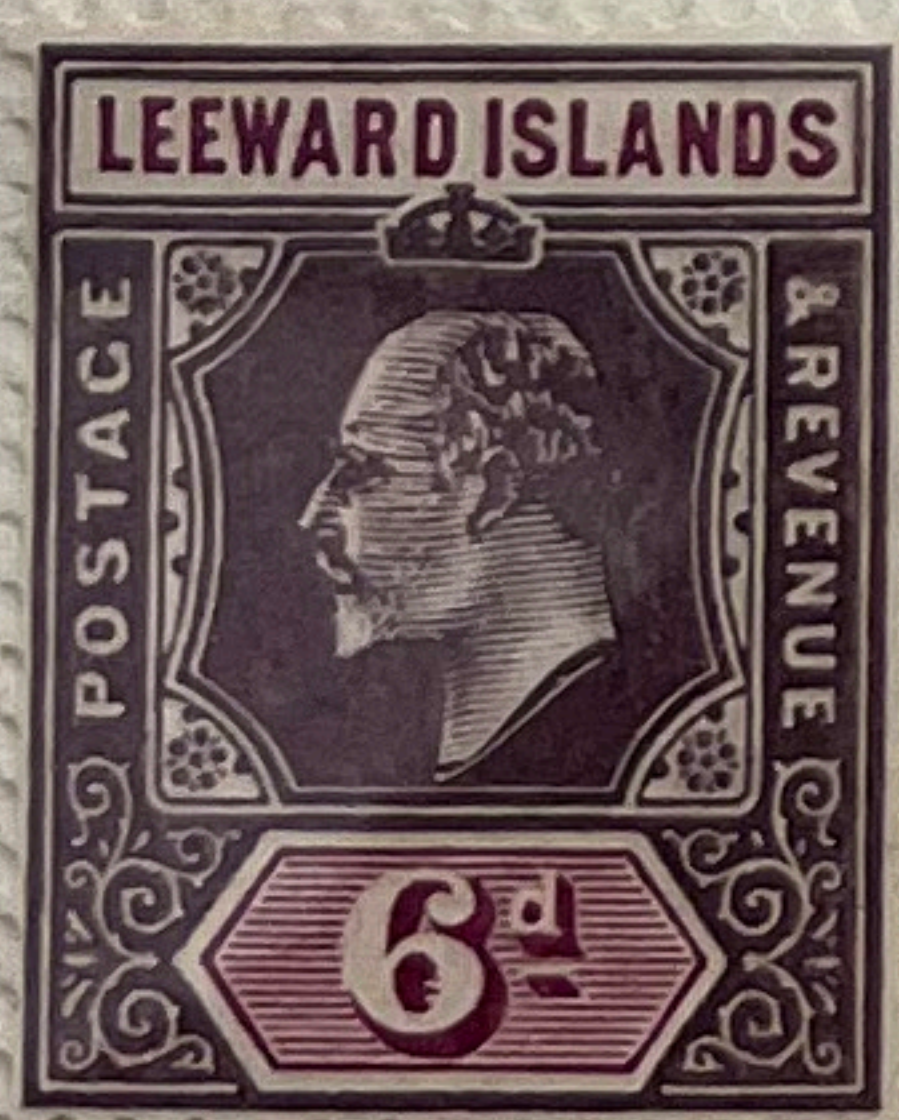
Purple & deep
Purple, BN

D33b



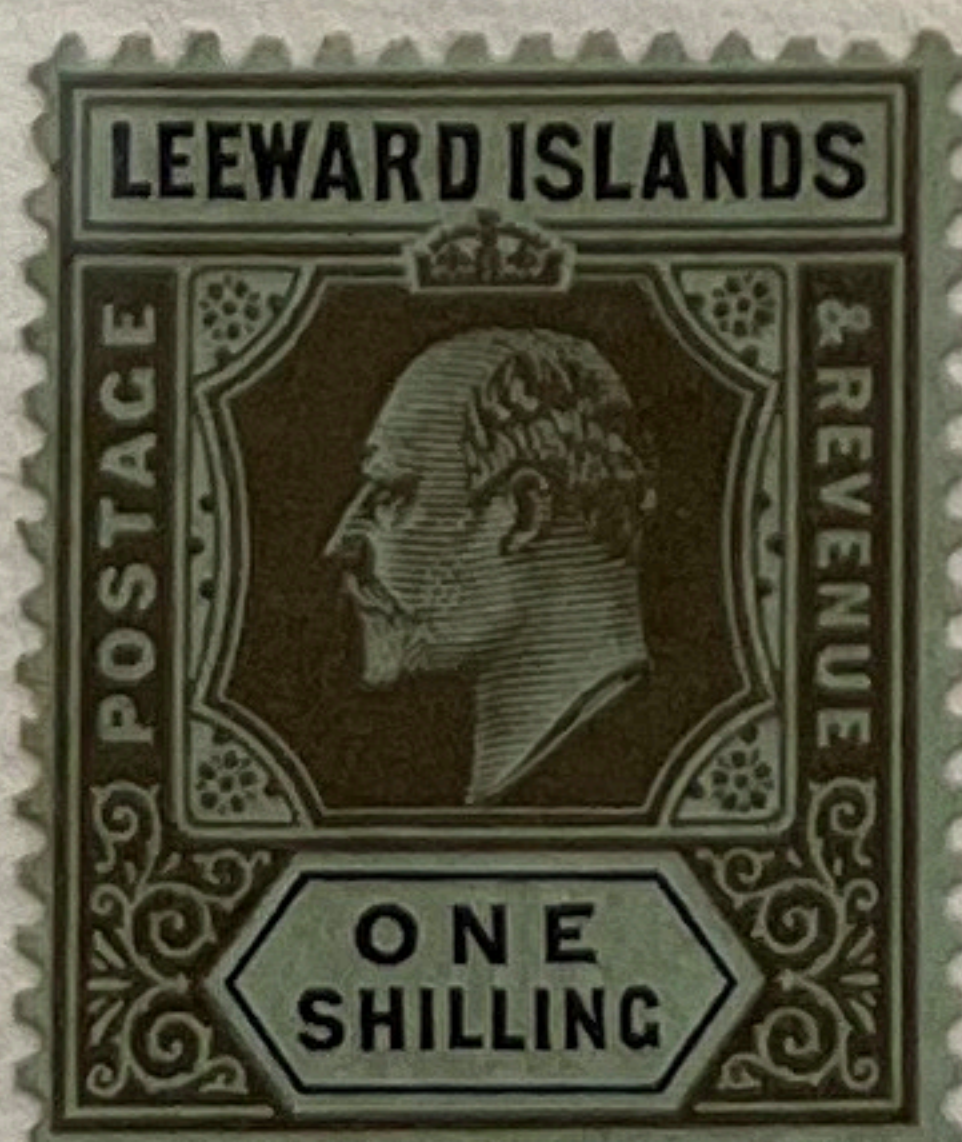
Purple &
Purple, N

D34



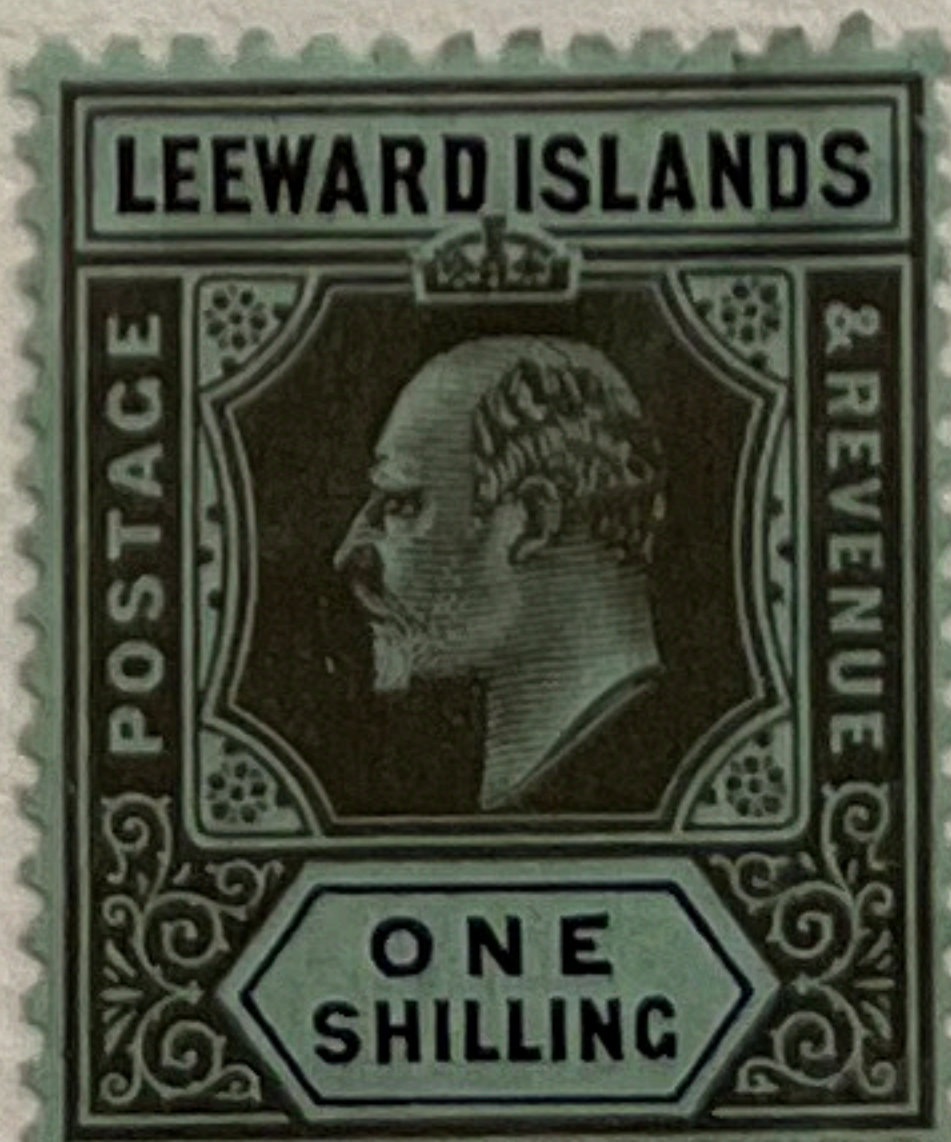
Cerise

D35



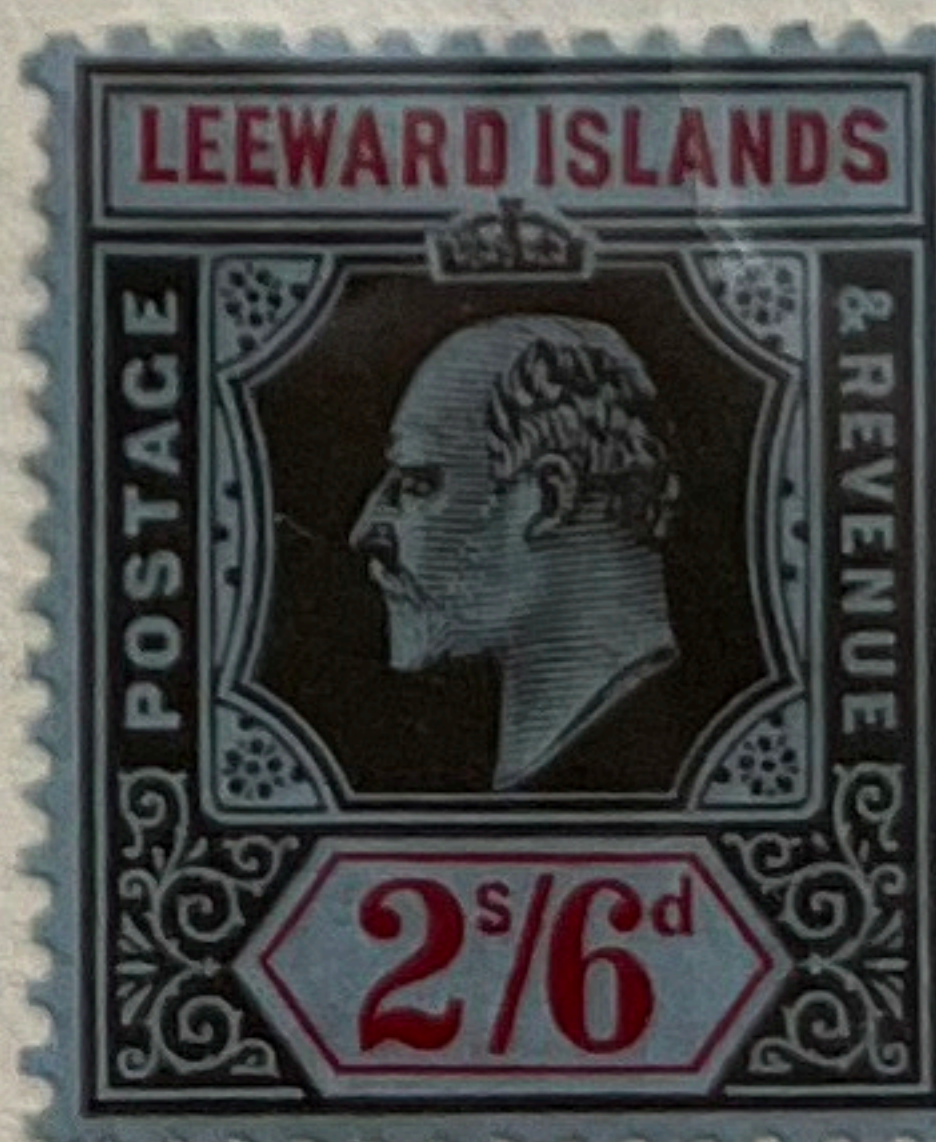
Grey-black
& Jet

D35a



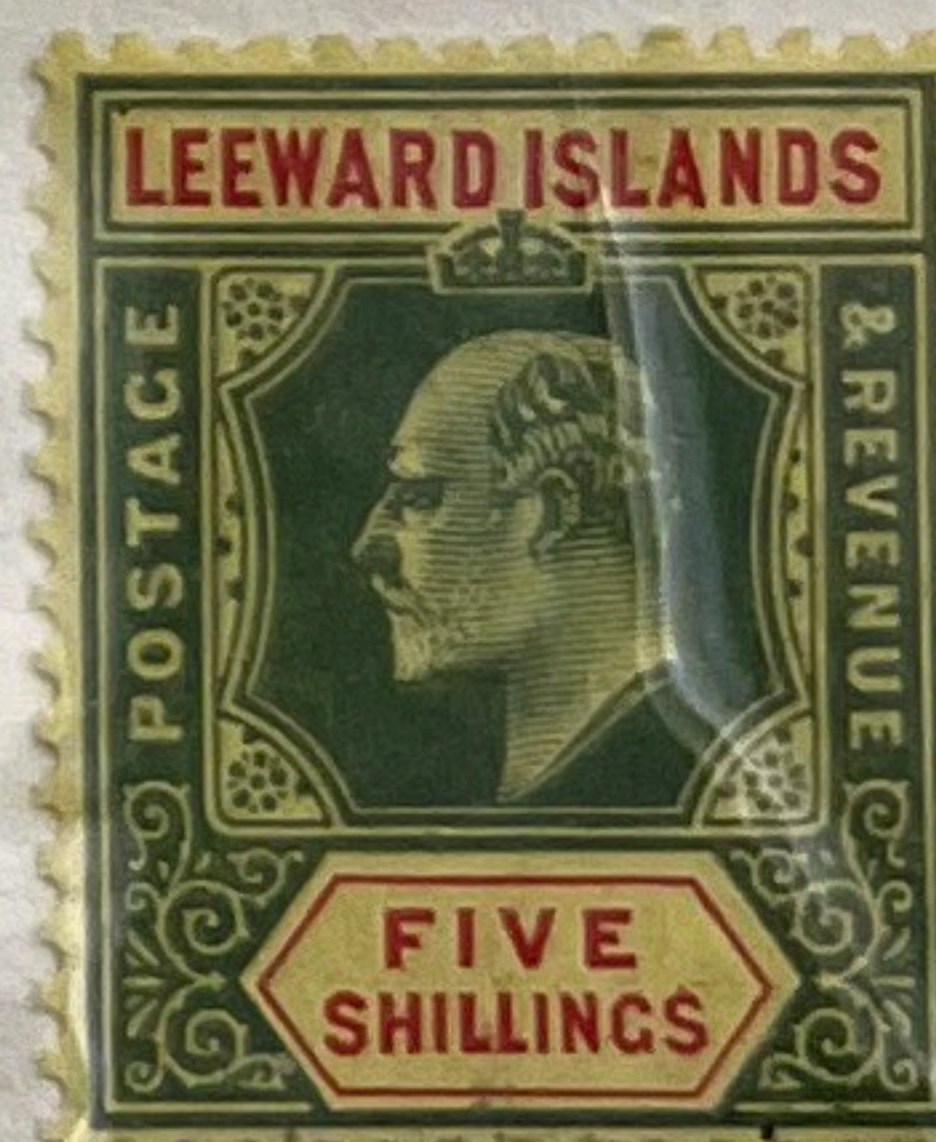
Black & jet

D36



Carmine

D37



Scarlet

Coloured papers and fronts are Yellow, ^{Green} Black & Blue

Catalogued flaws, 1890–1938 (cont'd)



D44ac – Broken 'AN'
KP5 – 9/5L



D44bd – Thick first 'L'
KP8 – 6/5L



D44be – Damaged value tablet
KP8 – 9/3L



D47ae – Sliced 'AR'
KP1 – 1/1R



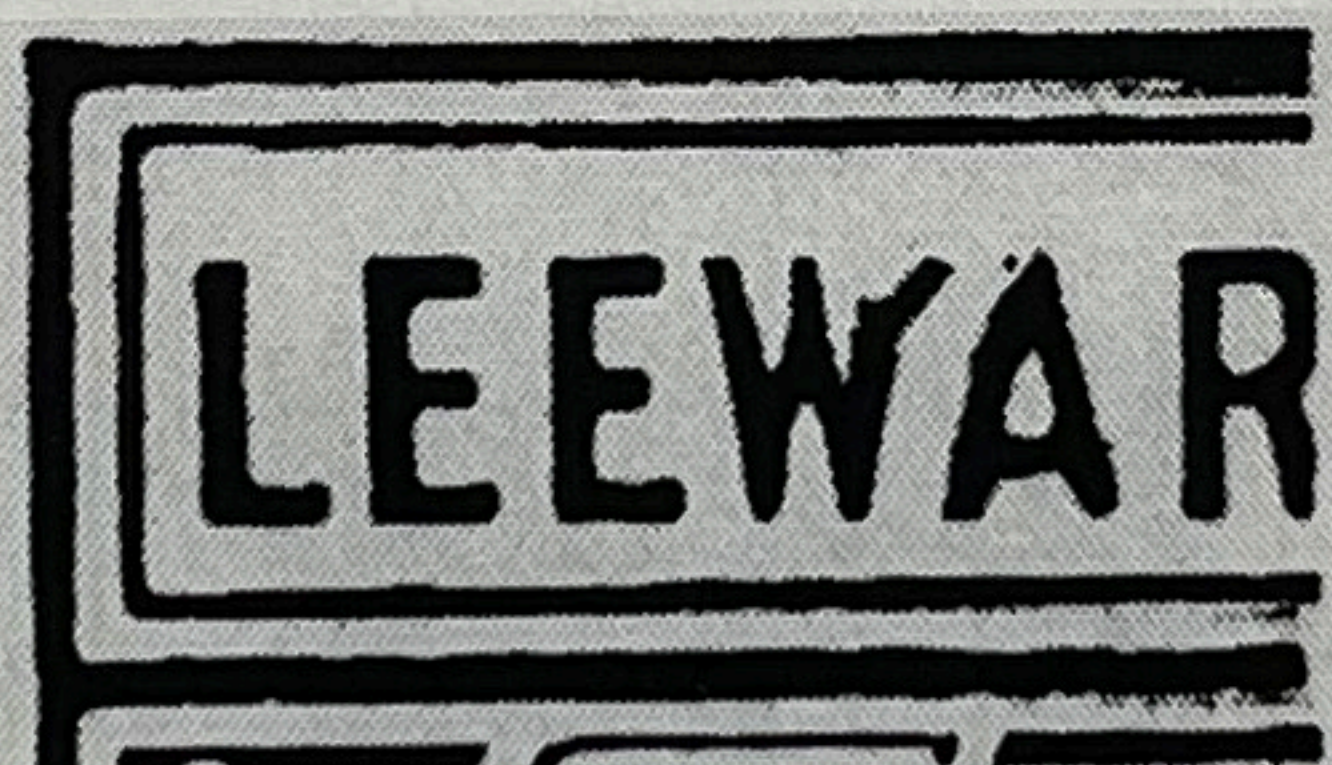
D47df – Bent 'L' & value tablet
KP8 to 11 – 1/2R



D47dg – First 'L' almost missing
KP8 – ?



D50ab – Broken 'N'
1934–38 – 7/6R



D50ac – Bent 'W'
1934–38 – 8/3R



D54b – Angled first 'L'
KP10 – ?

Other Flaws



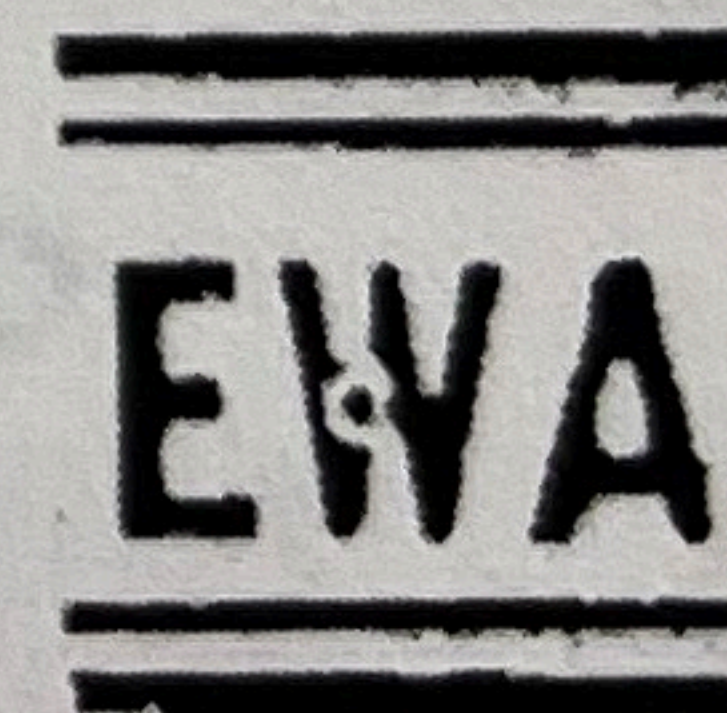
E



F



G



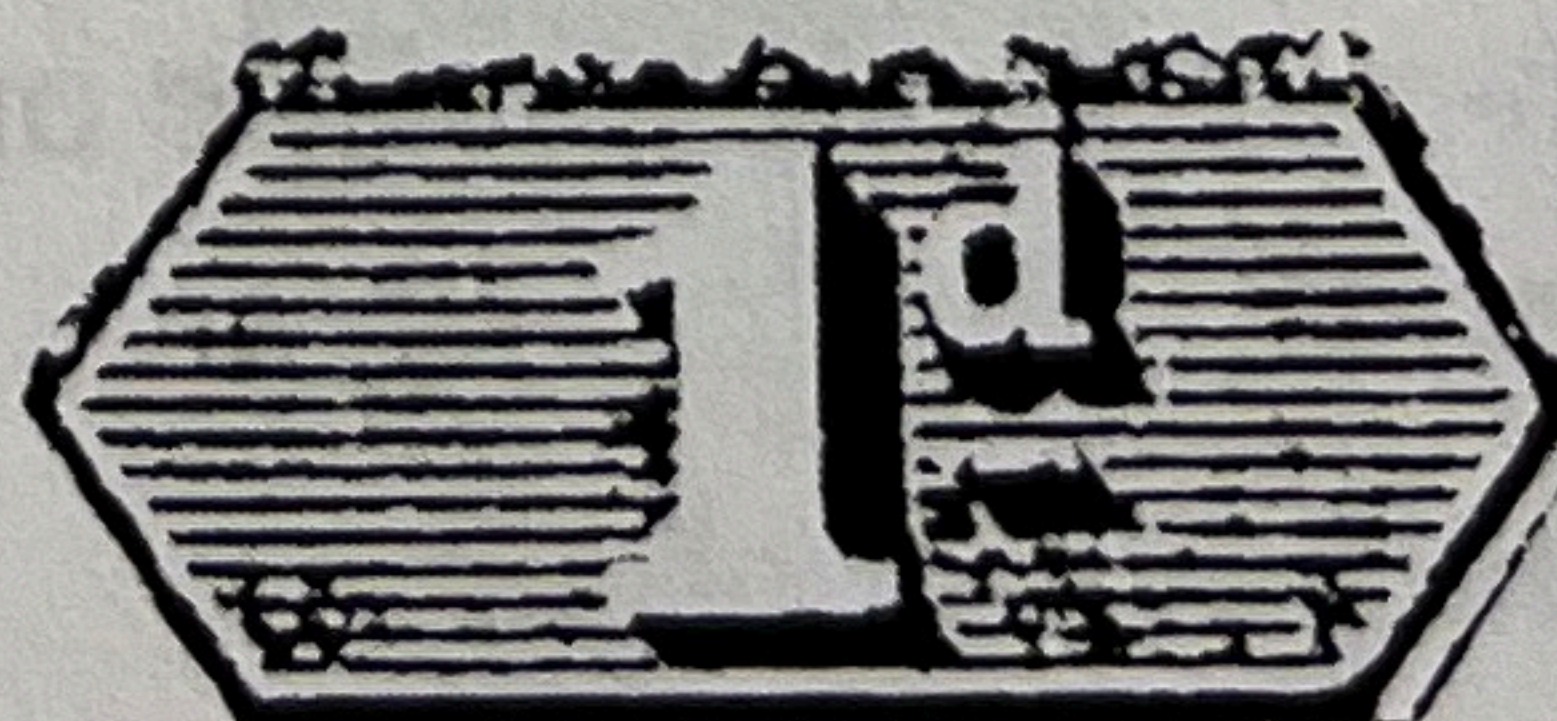
H



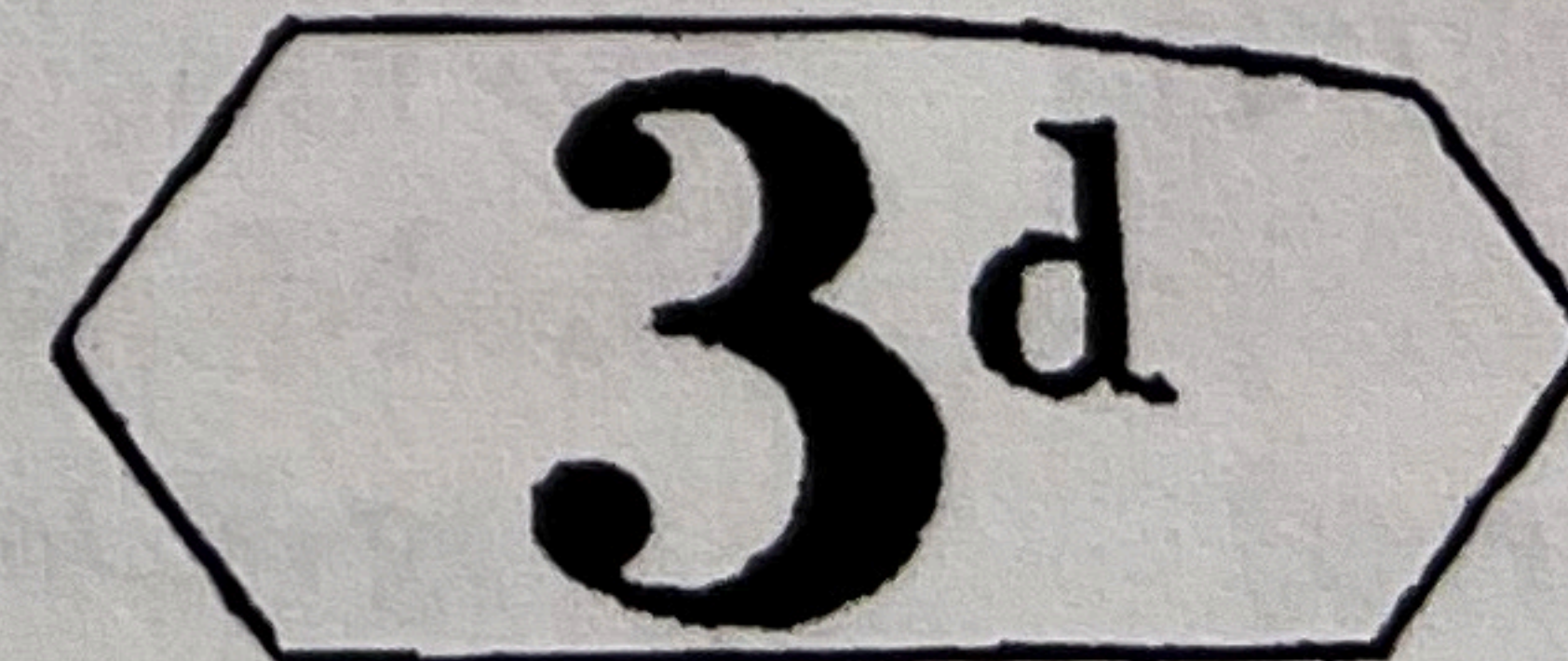
I



J

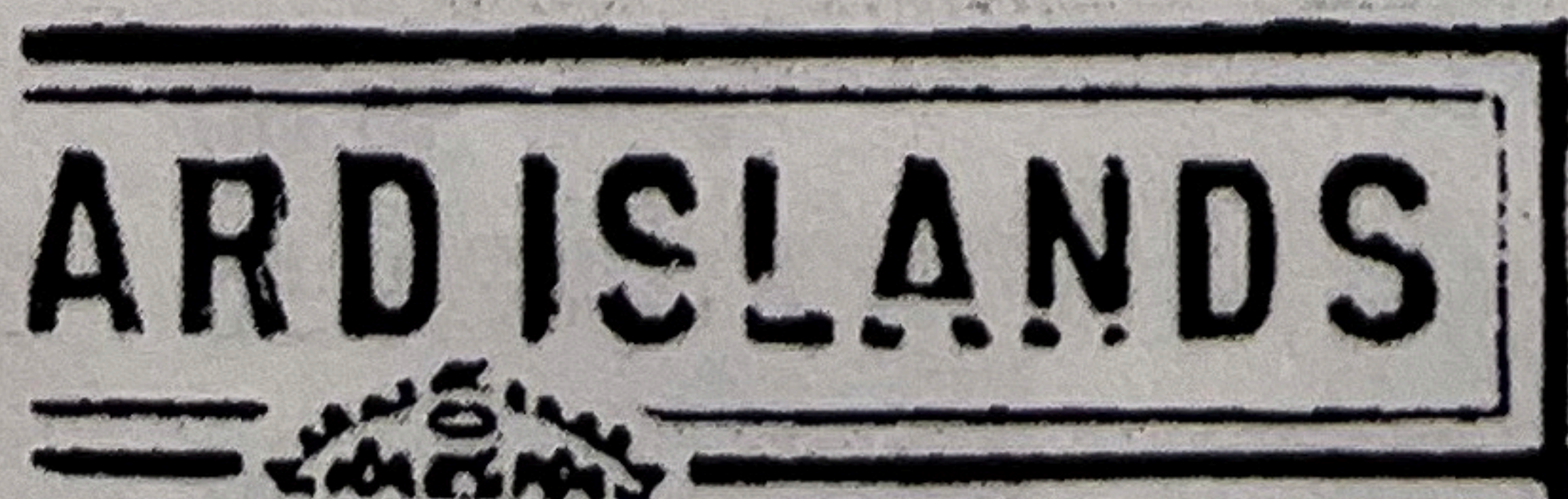


K



L

M

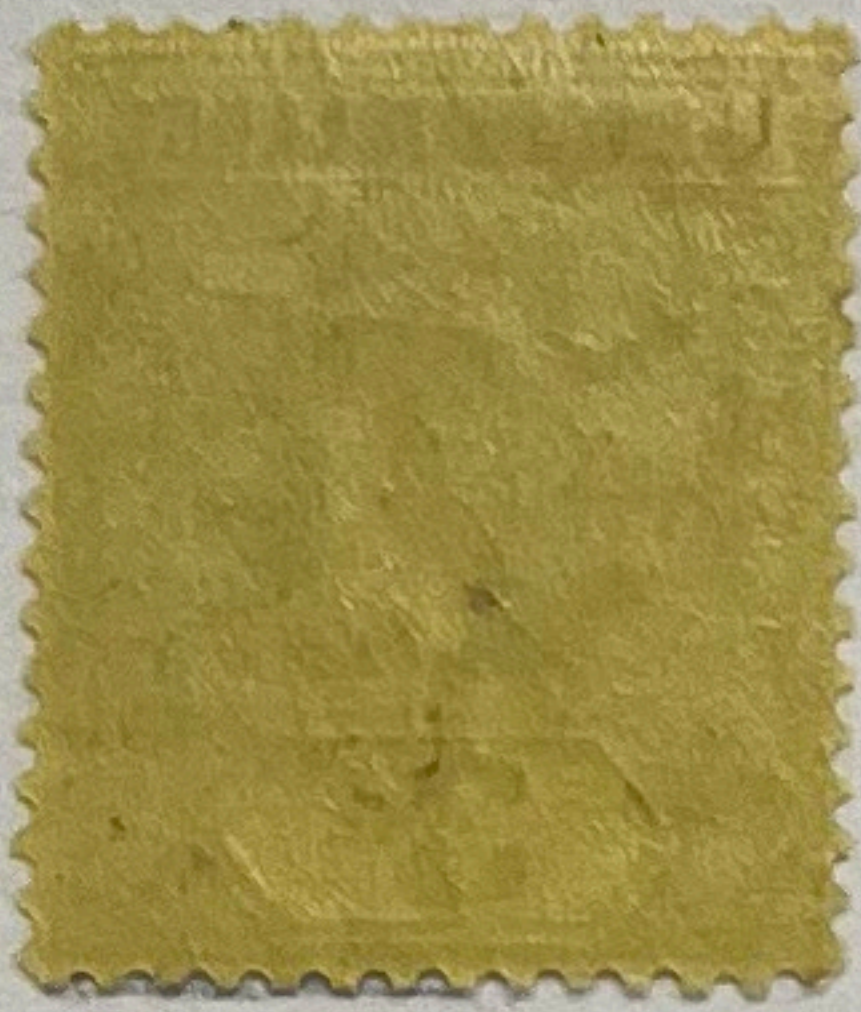


N





1912
Diel - MCA Wmk.



Yellow



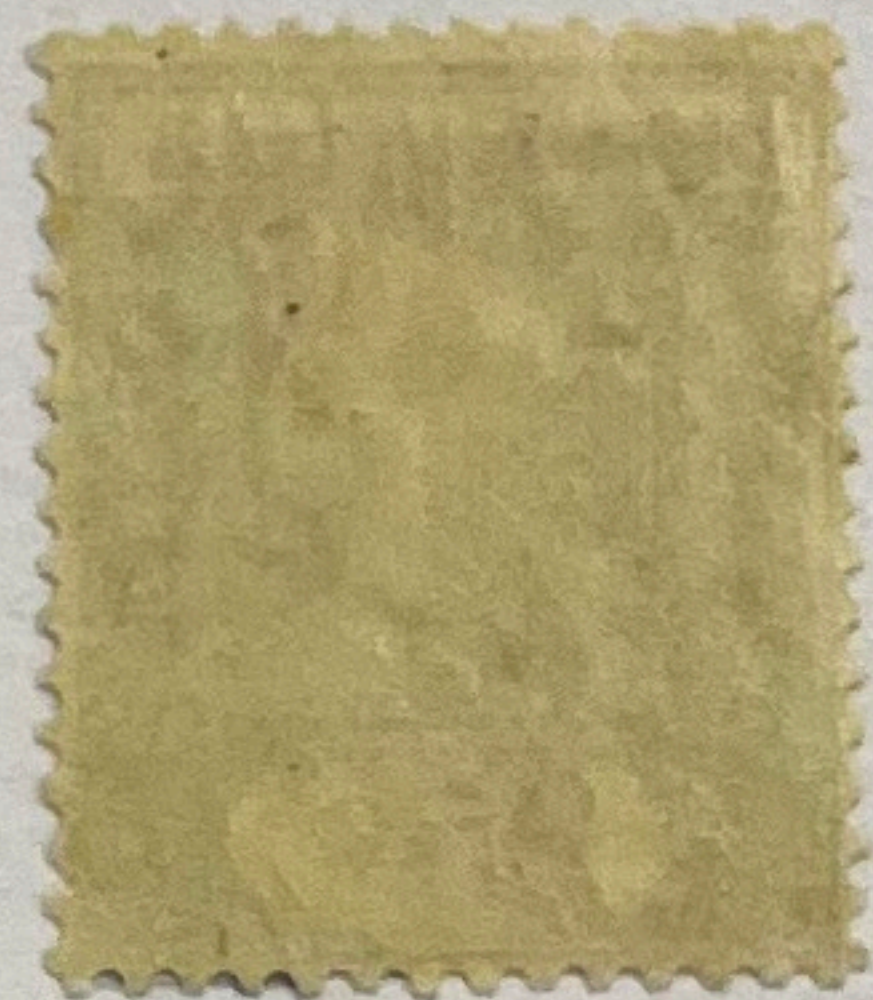
Lemon-yell



Ochre-yell



Orange-yell



Pale Yellow



Green



Dull green



Blue-green



Emerald



Pale sage-grn



Olive-green



Blue



Cobalt-blue

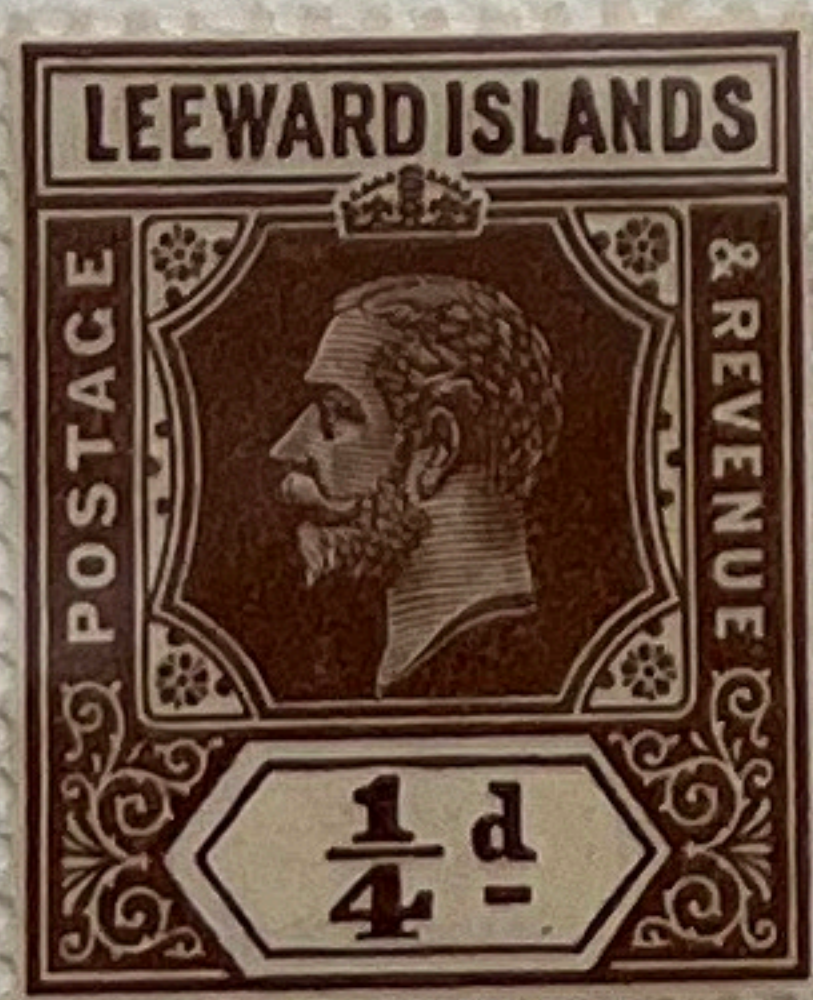


Grey-blue



Red

D38



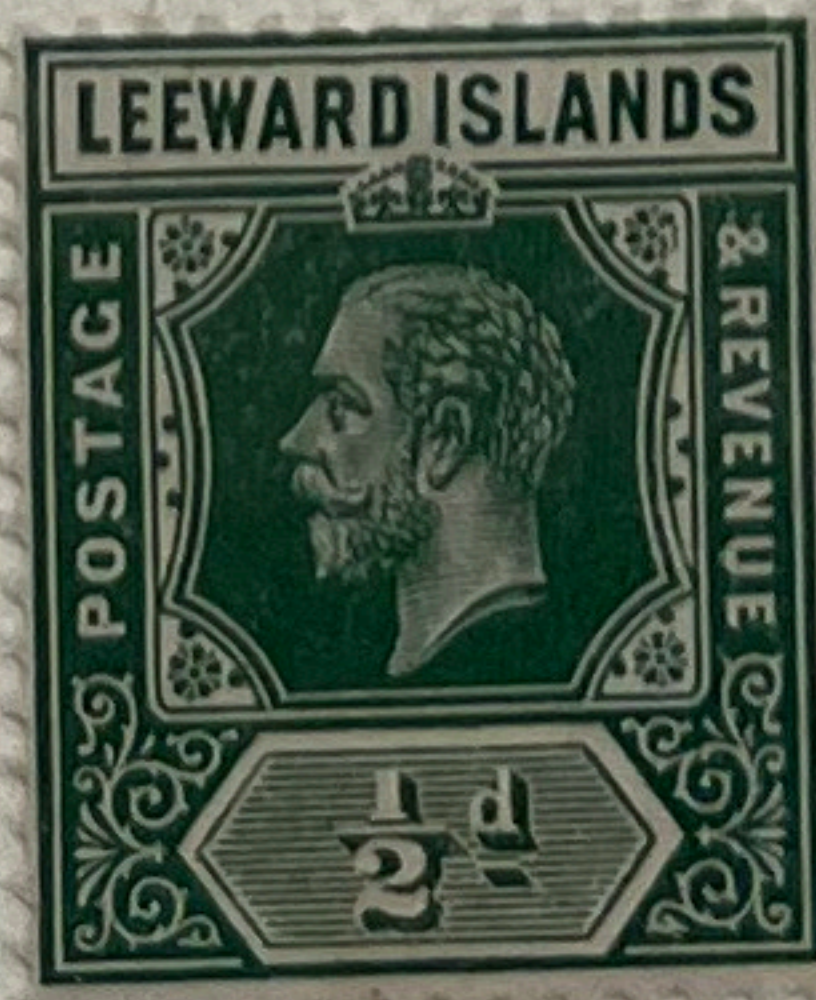
Brown

D38a



Chocolate-brn

D39



Blue-green

D39a



Green

D40



Red

D40a



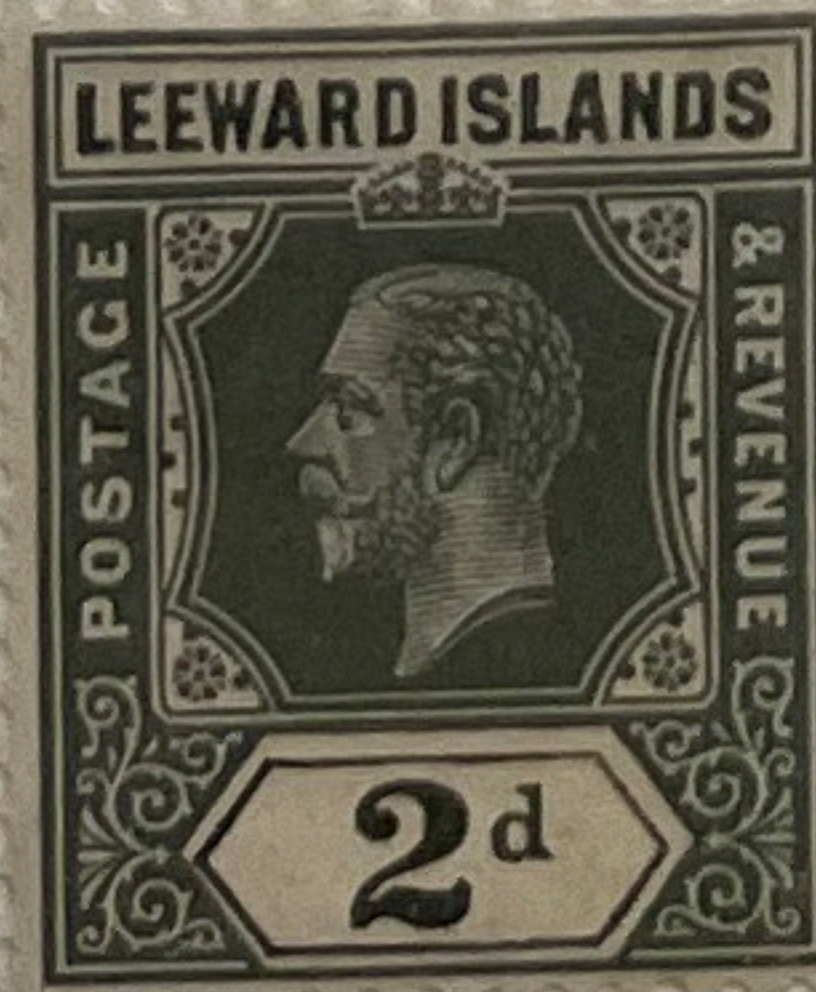
Scarlet

D40b



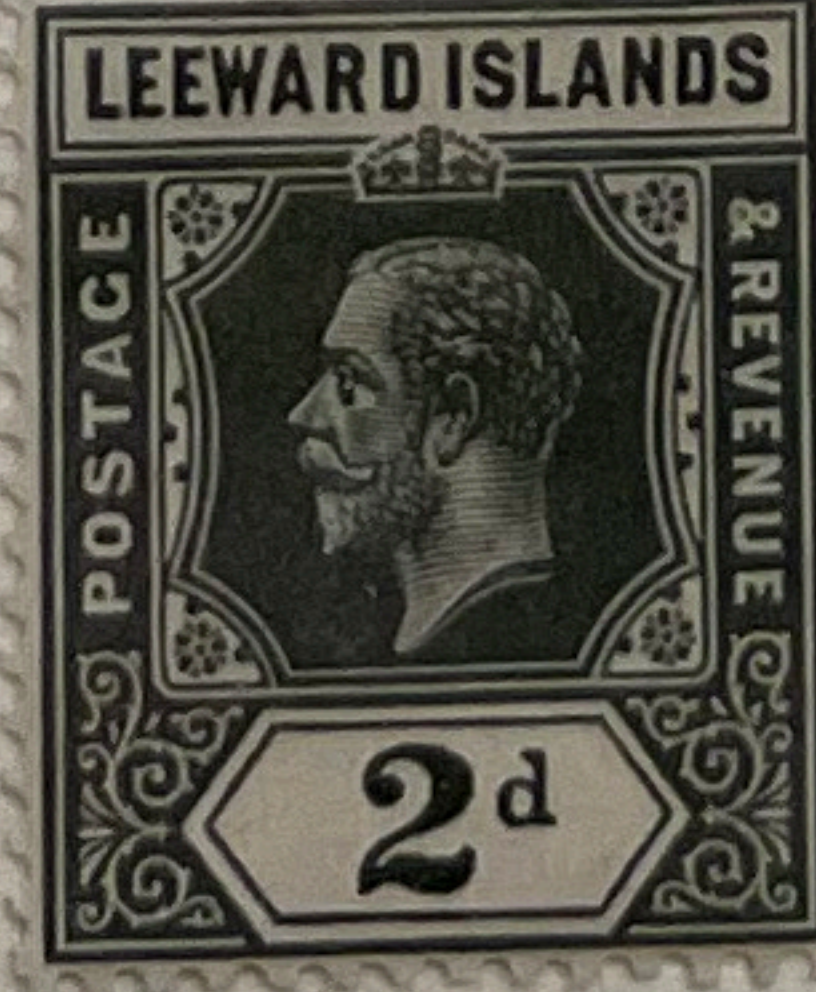
Rose-red

D41



Slate-grey

D41a



Deep grey

D42



Blue

D42a



Deep blue

D42b



Blue &
Ultramarine



D43



Purple on Gold-yellow/yellow

D43a



Purple on Yellow/white

D43b



Palish purple & purple on yellow/yellow + orange specks

D43c



Purple on yellow/lemon-yellow

D43d



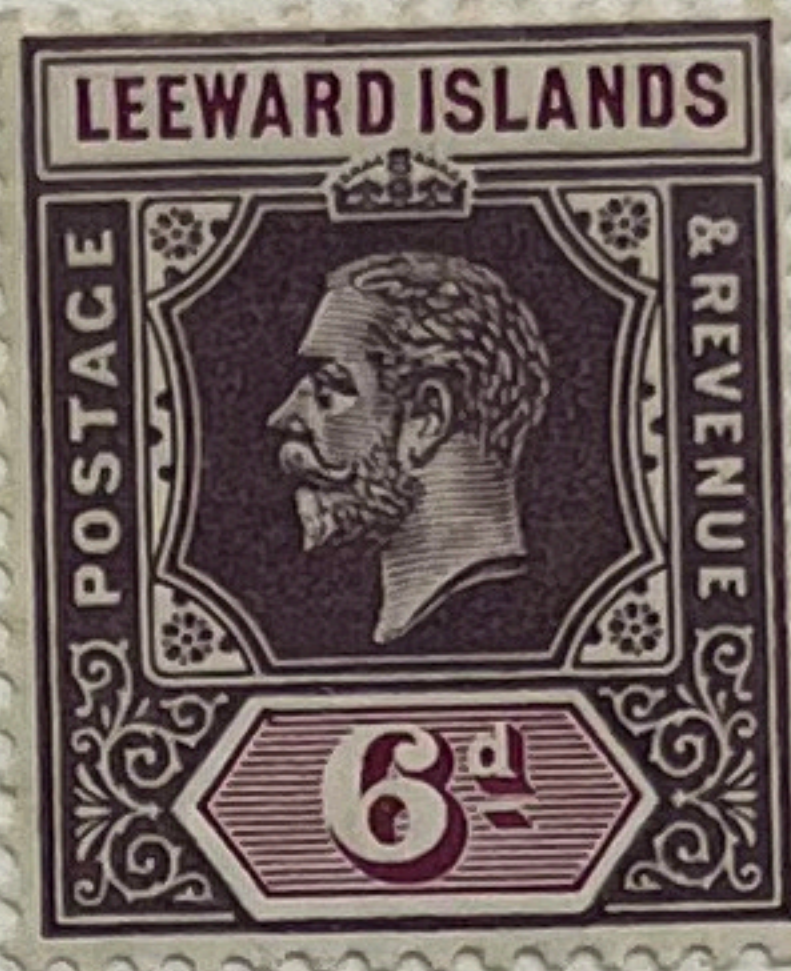
Reddish-purple & purple on pale yellow/yellow

D43e



Pale purple & deep purple on yellow/ochre or or.-yellow

D44



Purple & cerise

D44a



Brown-purple & pale cerise

D44b



Pale purple & dull mauve

D45



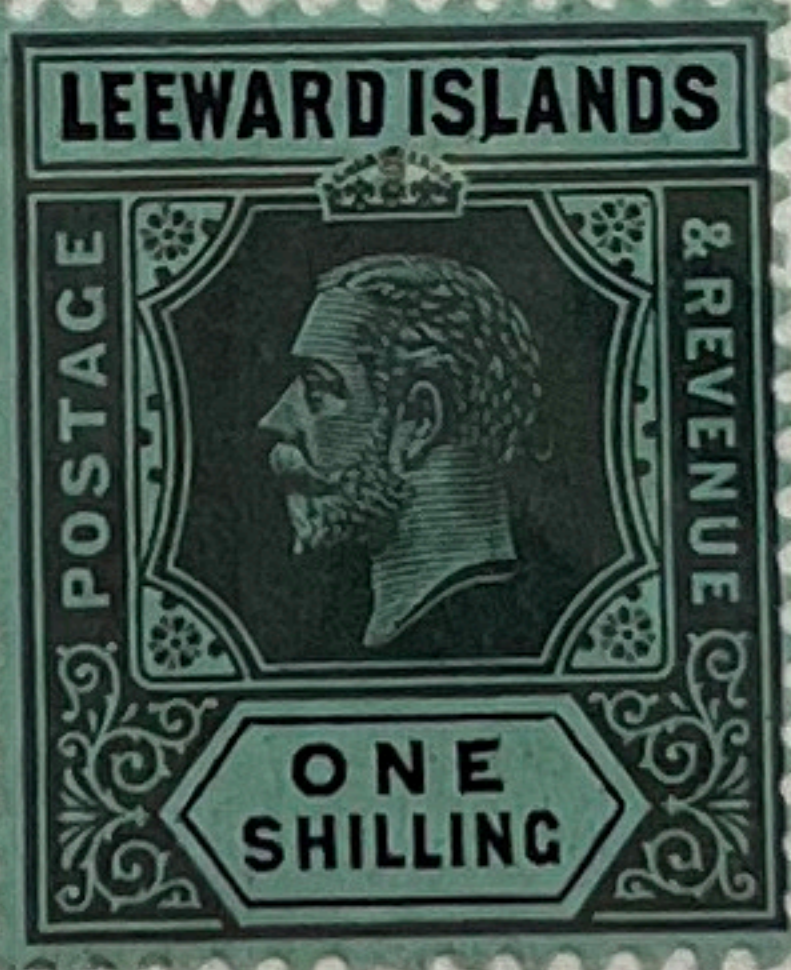
Jet-black & black on pale green/green

D45a



Black & jet on green/white

D45b



Grey-black & black on grn./green

D45c



Grey-black & black on grn./bluish-green

D45d



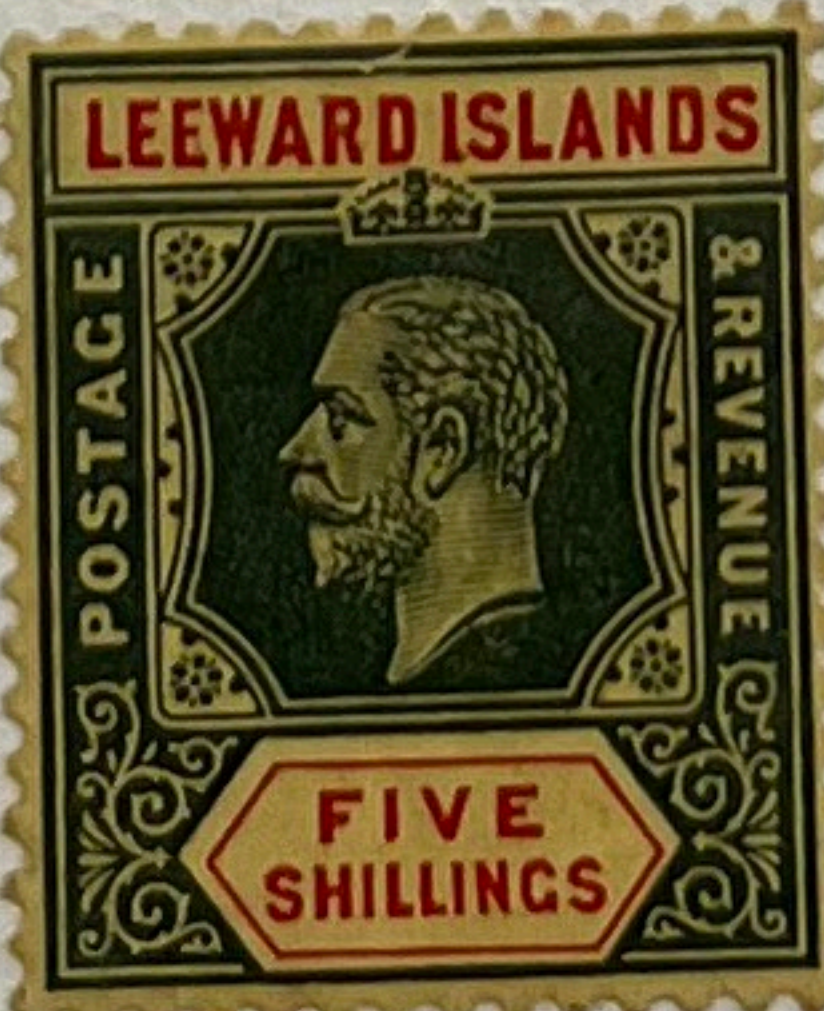
Drab & jet on pale yell-grn./pale sage-grn

D46



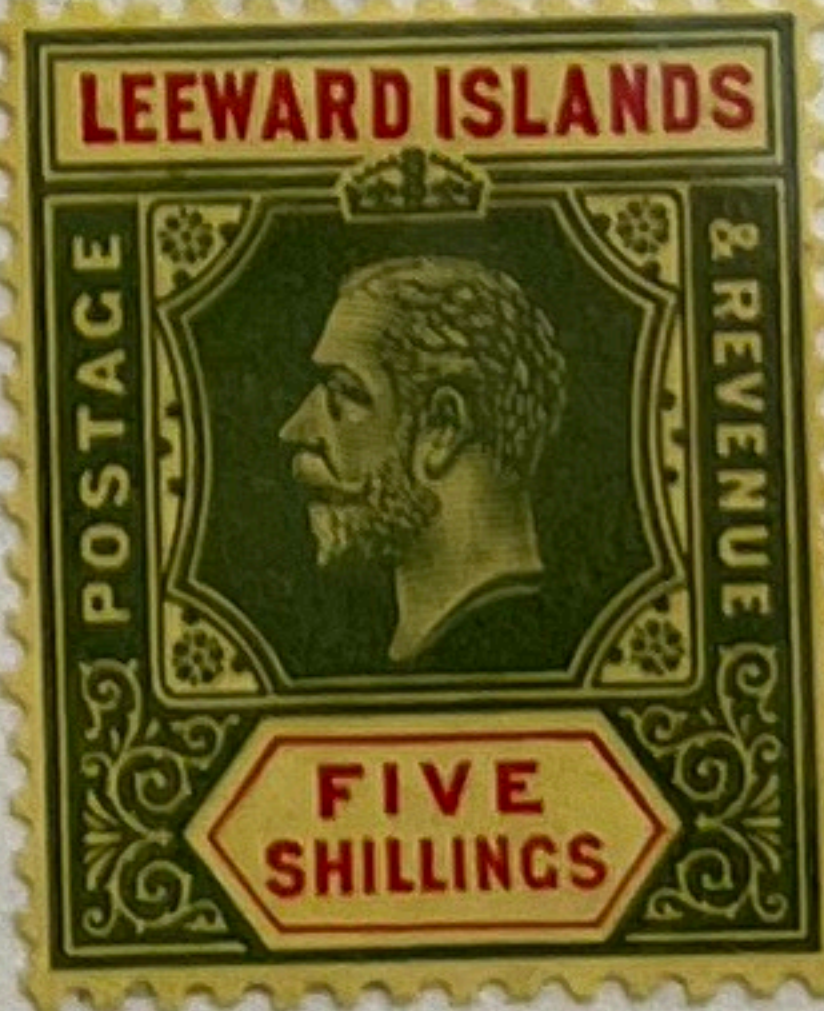
Black & red/greyish-blue

D47



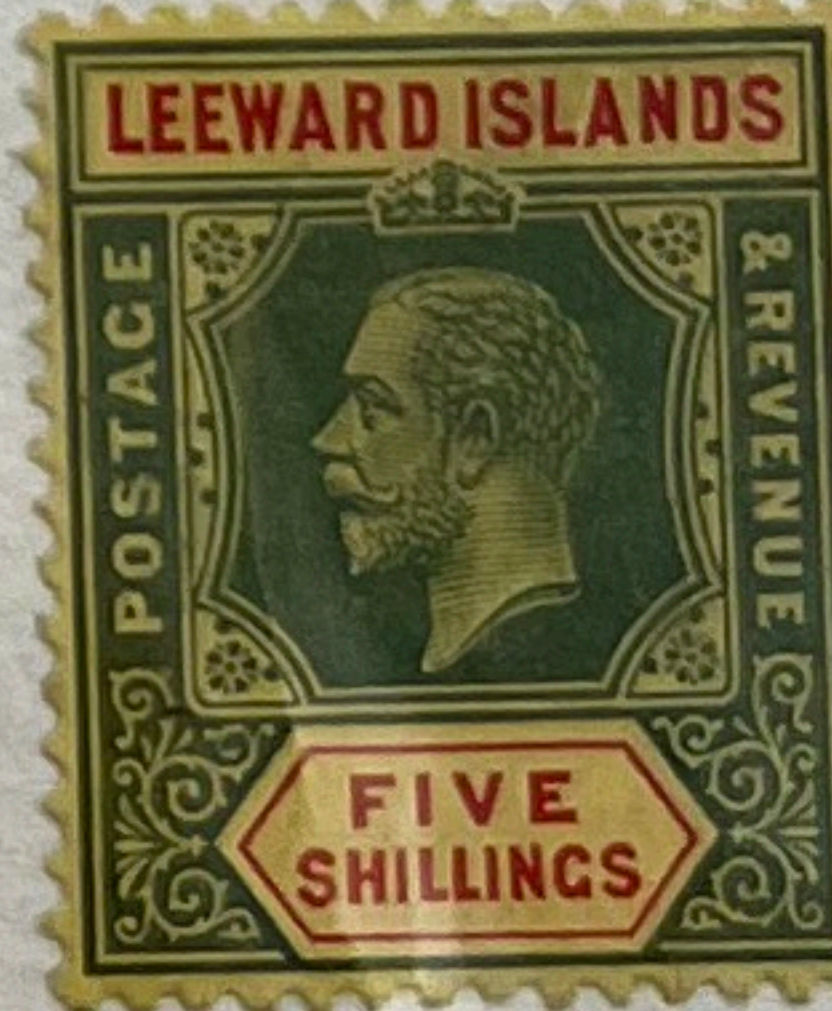
Deep green & scarlet on yellow/white

D47a



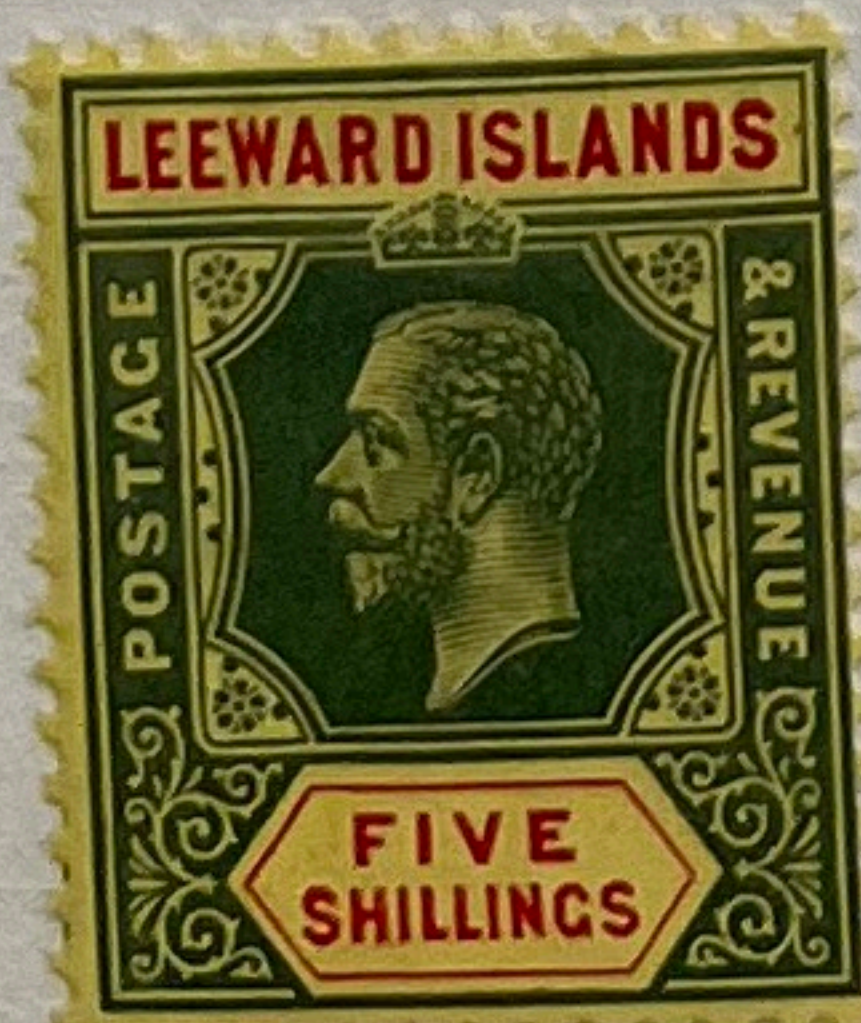
Green & scarlet on yellow/yellow + orange specks

D47b



Green & scarlet on yellow/lemon-yellow

D47c



Green & scarlet on yellow/yellow

D47d



Pale green & scarlet on yellow/ochre or orange-yellow



1921-38

Die II - Mult Crowns & Script CA Wmk

D48 except D59 & D64 - MCA Wmk

D48



Brown



Pale brown



Chocolate



Green

D50



Red

D50a



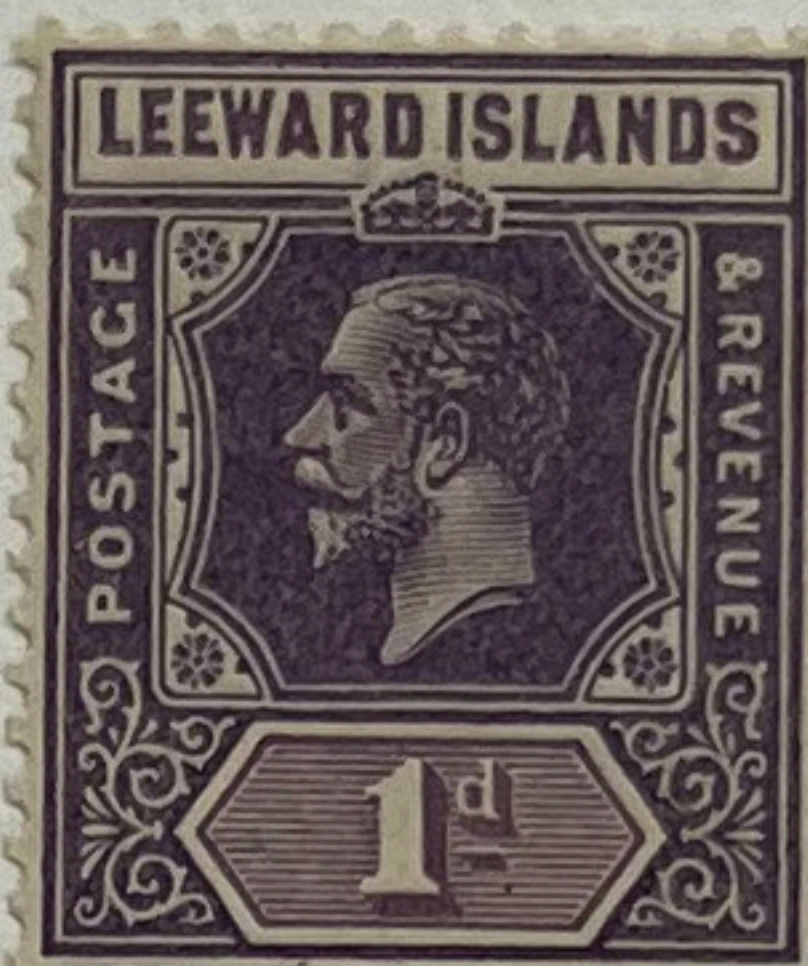
Carmine-red

D51



Violet

D51a



Pale violet

D52



Red

D53



Chestnut

D54



Grey

D55



Amber

D56



Blue

D57



Blue

D57a



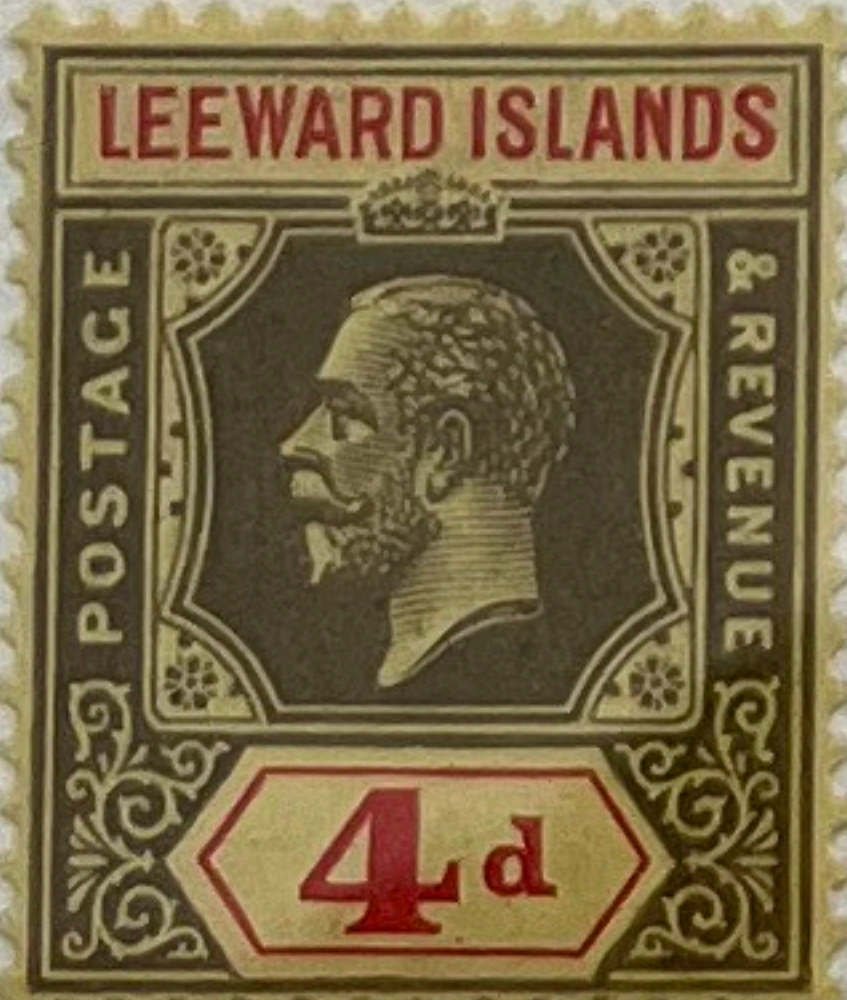
Ultramarine

D58



Purple on Pale Yellow/Pale Yell

D59



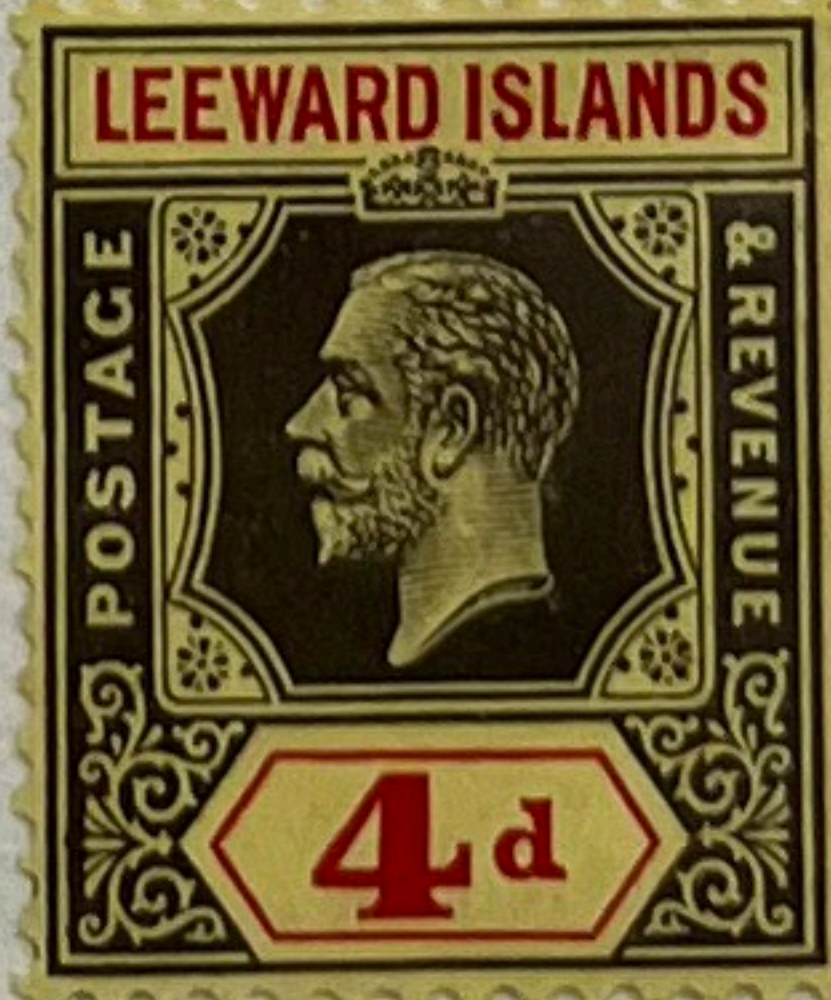
Drab & Red/Pale yellow

D60



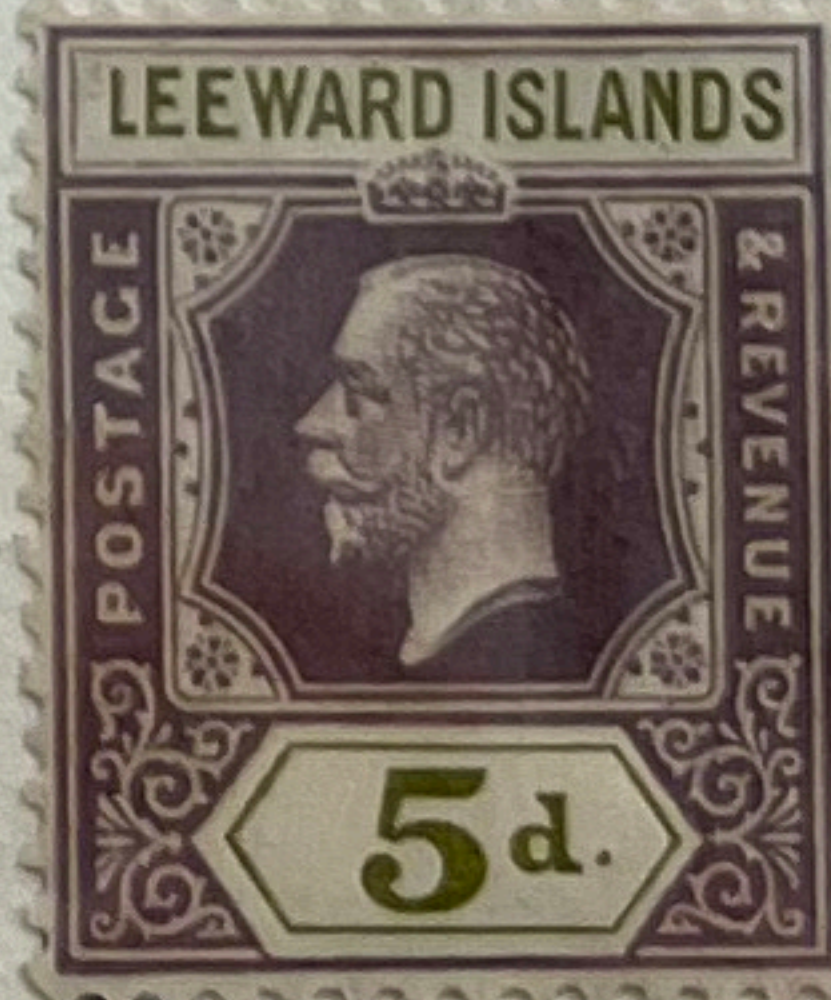
Grey-blk & red/Ochre-yellow

D60a



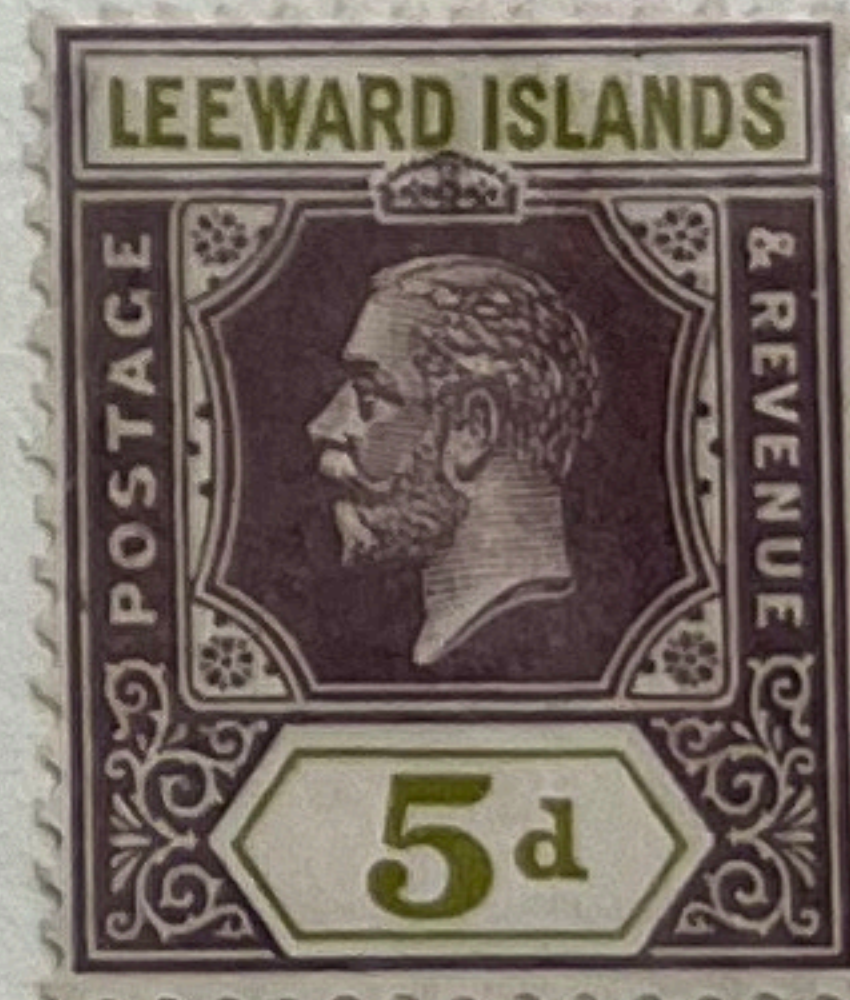
Jet & Carmine-red/Pale yellow

D61



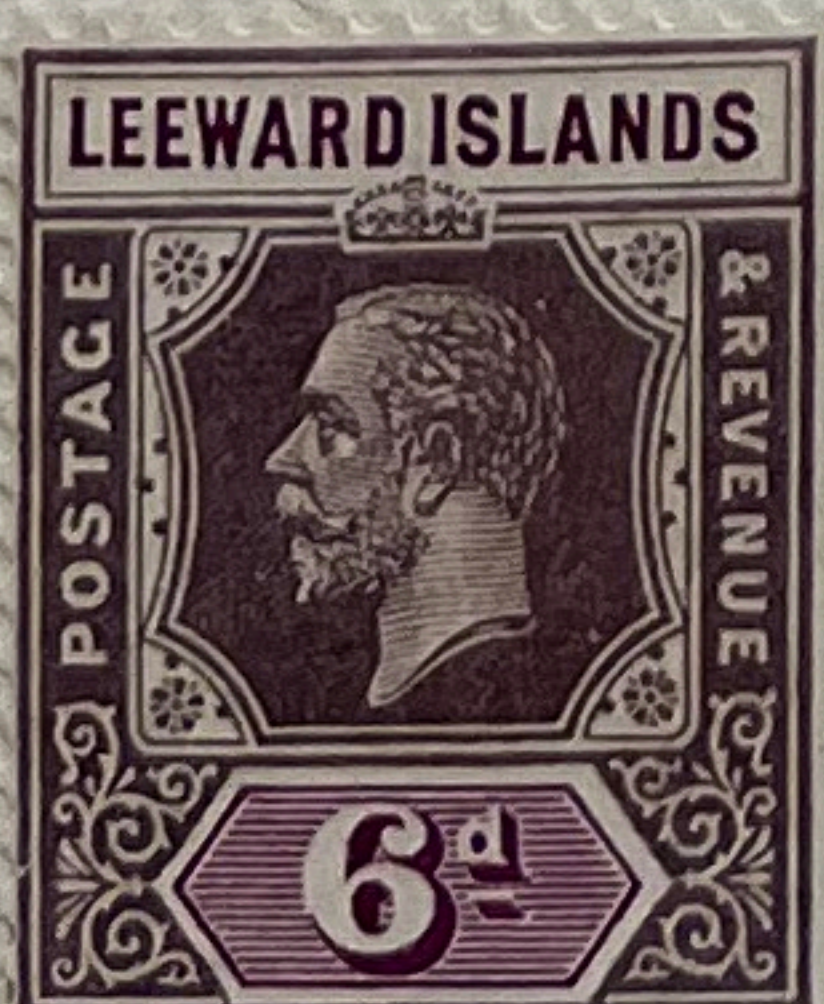
Purple & Sage-green

D61a



Purple & Ochre-green

D62



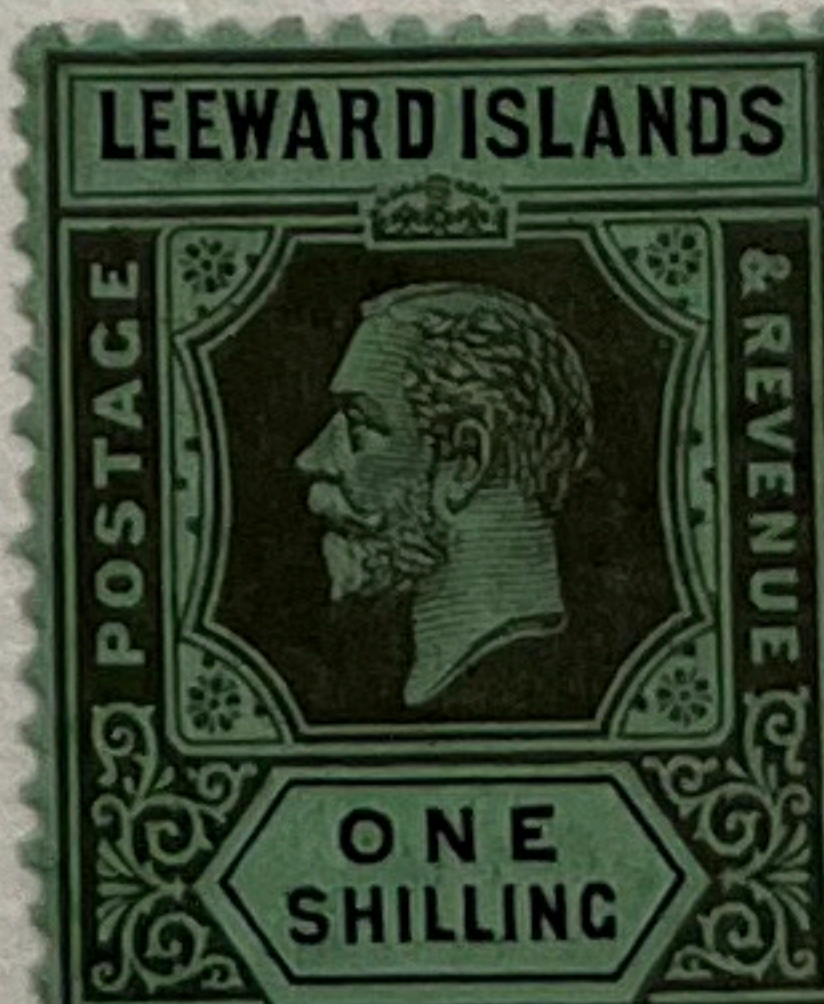
Purple & Magenta

D62a



Purple & Dull Mauve

D63



Grey-black & Jet on Pale grn/Olive-green

D63a



Black & Jet on Emerald/Olive-green



D64



Purple & Blue/
Blue

D65



Purple & Blue/
Cobalt-blue

D65a



Violet-purple
& Blue/Blue

D66



Black & Red/
Blue

D67



Dull Yellow-grn
& Violet-black

D67a



Dull Yell-grn
& Deep violet

D67b



Dull Yell-grn
& Violet

D68



Drab & Red

D68a



Black & Red

D69



Green & Scarlet/
Pale Yellow

1931 - Die I, Plate 23

D70



Brown

D71



Green

D72



Red

D73



Chestnut

D74



Blue

D75



Purple & Dull mauve

D76



Black & Jet on
Emerald/Olive-grn



D54a



D58a



D76a

1938-49



D77



Brown

D77a



Pale brown

D77b



Bright brown

D77c



Dull brown

D78



Green

D79



Slate-grey

D80



Red

D81



Scarlet

D81a



Carmine-red

D81b



Deep Red

D81c



Rose-red

D82



Emerald-green

D83



Pale chestnut

D84



Pale Orange & Jet

D84a



~~Pale~~ orange & Jet

D85



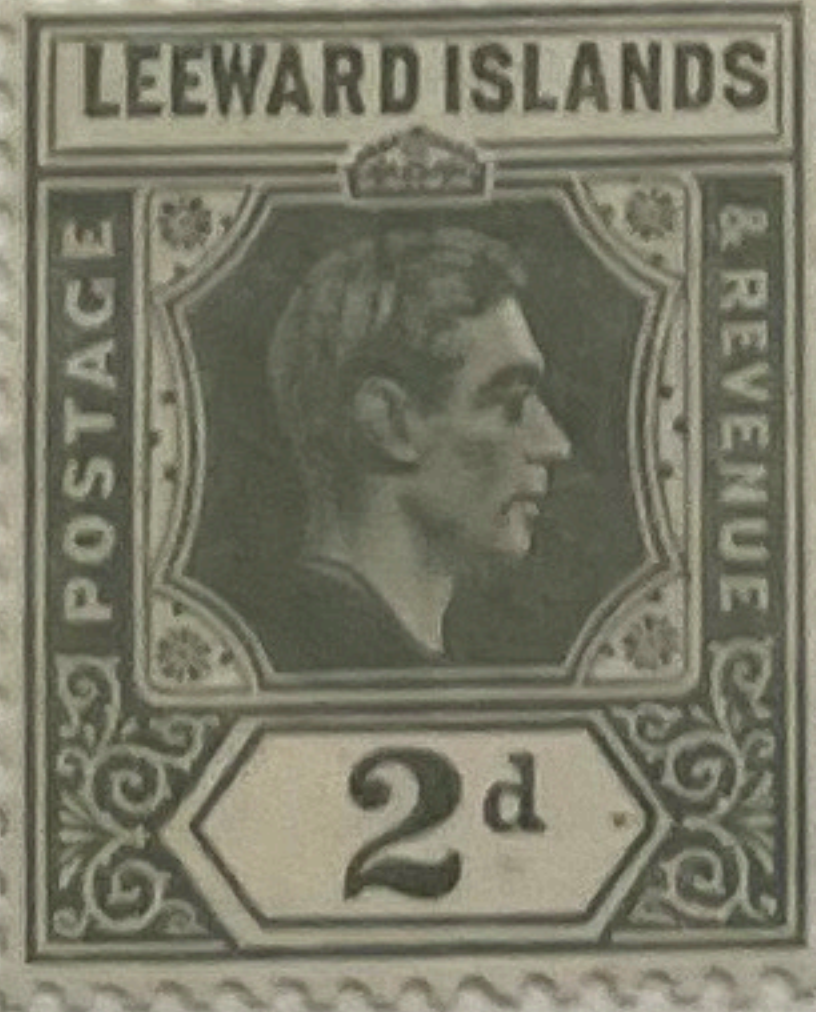
Slate-grey

D85a



Grey & Deep grey

D85b



Pale slate-grey

D85c



Olive-grey

D86



Scarlet-red

D86a



Vermilion-red

D87



Blue

D88



Jet & Deep cerise

D89



Deep orange

D89a



Orange

D89b



Pale orange

D90



Bright blue



1938
High Values
H3a

H3



Greyish-green & Scarlet-red / Green (c)



Palish-green & Scarlet-red / Green

H3b



Deepish-green & Vermilion red / Emerald



Green-shreaky gum



Green (also streaky) ^{FLAW 47A}
H4a



Emerald
1944

Jan & Nov 38 ptgr
H4



Brownish-purple & Jet on Red / Red(c) Reddish-purple & Jet on Red / Red(c) Mauve-purple & Jet on Rose-red / Salmon-red Claret-purple & Jet on Pale red / Red Violet & Jet on Scarlet-red / Red(c)



1938 - Red
Wmk. clear Brown



1942 - Salmon-red
Wmk invisible



1944 - Red
Wmk clear Red



1951 - Red
Wmk invisible