

ON HER MAJESTY'S SERVICE.

£205 Stamp

76

PM-N1
£20



Mrs. Dean,
2, Molyneux Court,
Tunbridge Wells,
Kent.



ON HER MAJESTY'S SERVICE.

£205 Stamp

75

£20



Mrs. Dean,
2, Molyneux Court,
Tunbridge Wells,
Kent.





J. L. Johnson,
 F. I. D. S.
 Base "H",
 Signy Island.

as 10 steps
 £81
 all (but 2 1/2) w/
 sep.

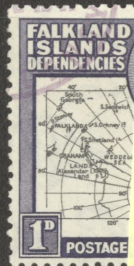
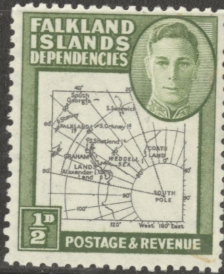


Mr J. M. Campbell
 2 Woody St.
 Stanley
 Falkland Is. Islands



66c
POKE
£180

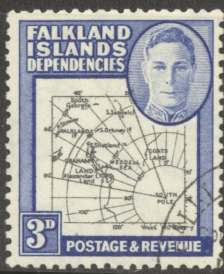




G2aa 0 Bro
G2d 0
£200



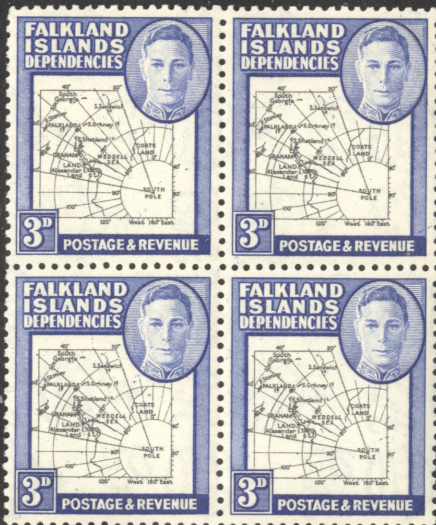
dot by oval
G4d £371

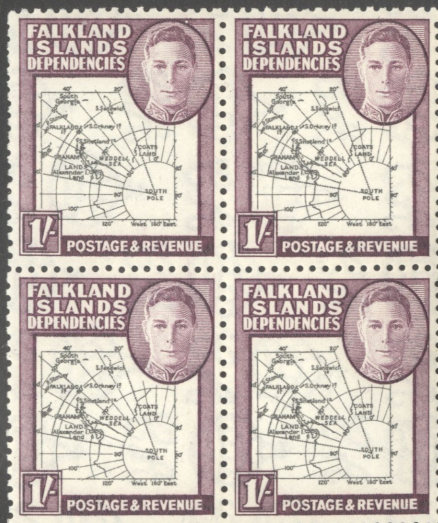


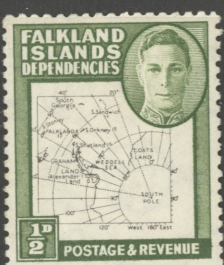
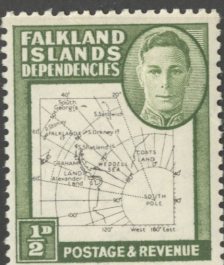
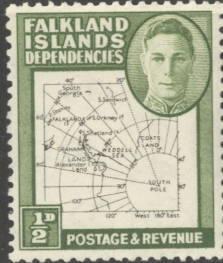
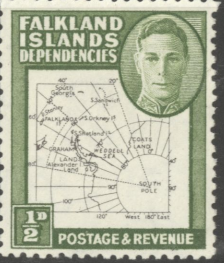
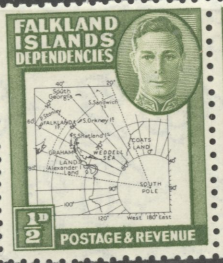
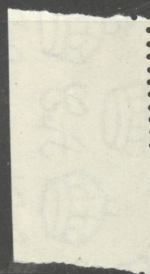
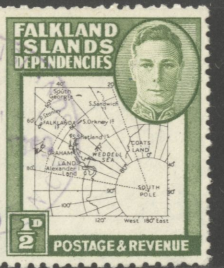
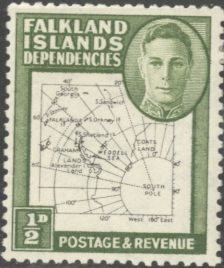
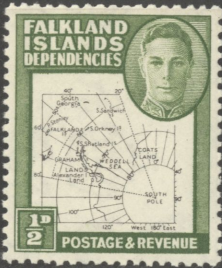


Extra set.
£170
Bill [unclear]



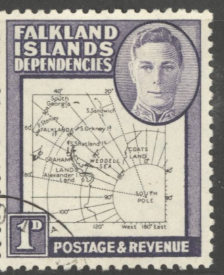
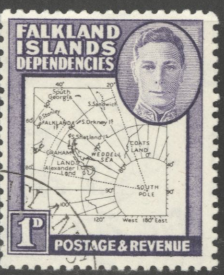
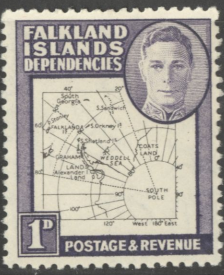




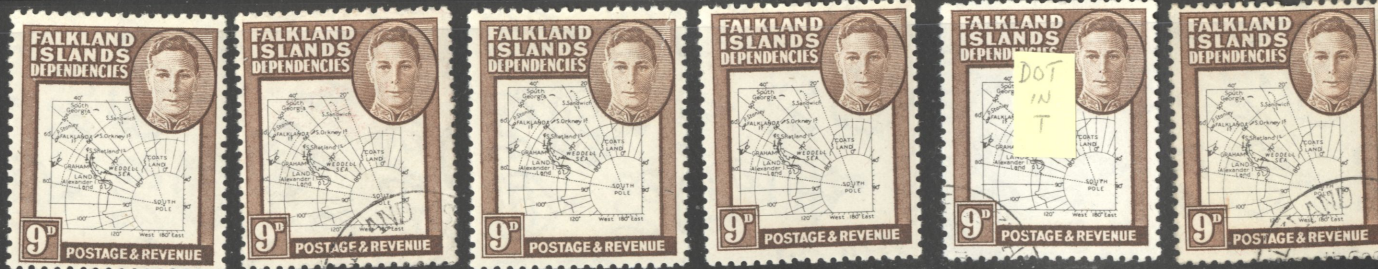
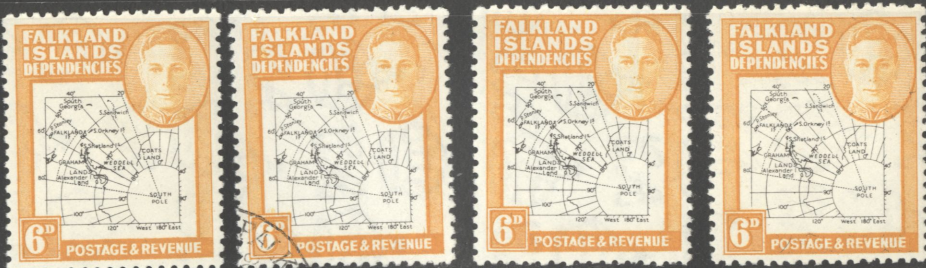
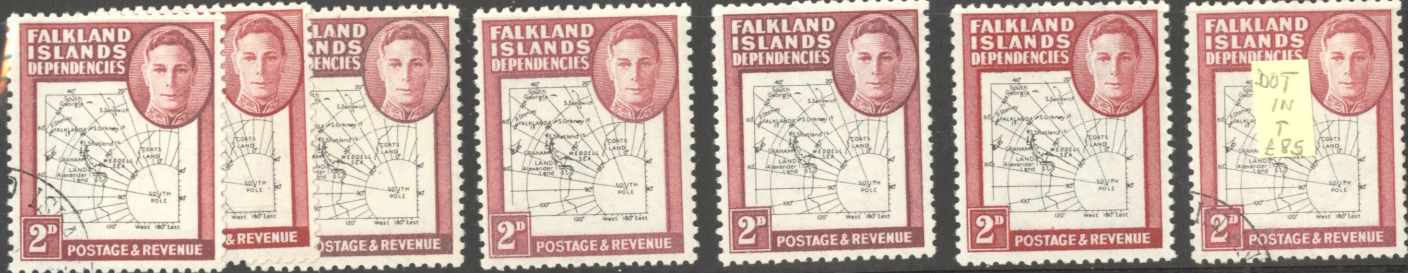


?

Completed



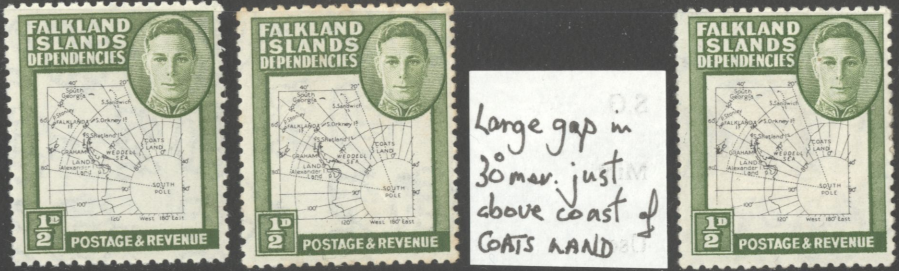
↑ ↑
DOT IN
"T"
USED
R65 X2



R5/4
Dot on 'I' of
SOUTH REMOVED



Very light (late)
print showing
gaps - frame
& grid.



Large gap in
30 mar. just
above coast of
GOATS LAND

Ink blemish
on 60°11'W
South East of
Falk. Is.



Map printed
on very
'GRAINEY'
paper.



A CONSTANT FLAW
occurs on the thin
maps - a dot outside
the map frame to the
right and 2mm below
the Oval.
Also, a dot appears
between the colour
frame and the post
not above the
bottom map frame line.



Broken 'y'
in Orkney



Spot in vignette
colour by outer
frame right.
2mm below Oval.



1d
Broken 'u'
in South
Georgia



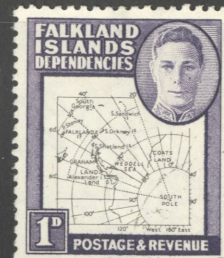
Spot above
S of SOUTH POLE.



Broken E in
WADDÉLL

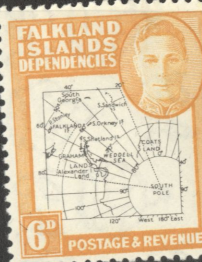
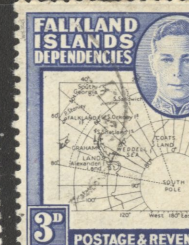
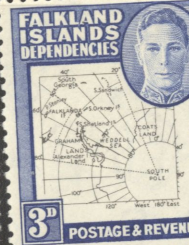
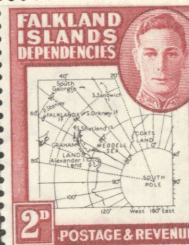
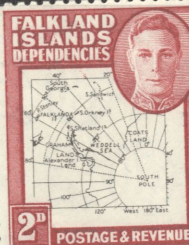
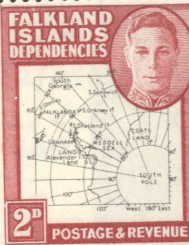


1d, 1/-?
Teardrop

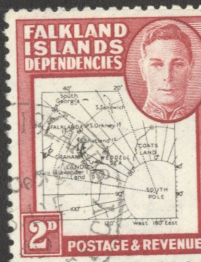


3d thin map
PRINTED
DOUBLE,
F.c. South
Shetlands





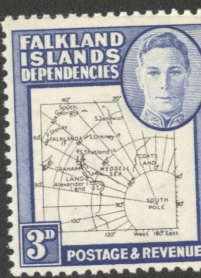
Break in frame
top left.



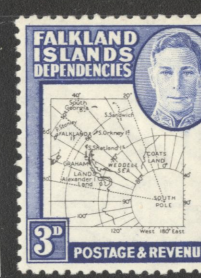
Blonish appears
just above 8° of
80°(11). Seen
better on reverse, it
is grit or coal in the
paper!



Flek by 90° mer
above 100°.



Flaw between
100° & 110° mer.
near 80°/1.



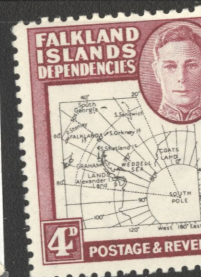
Spot by oval
due south.



Broken 'k' in
Orkney



Famly N in
COATS LAND.

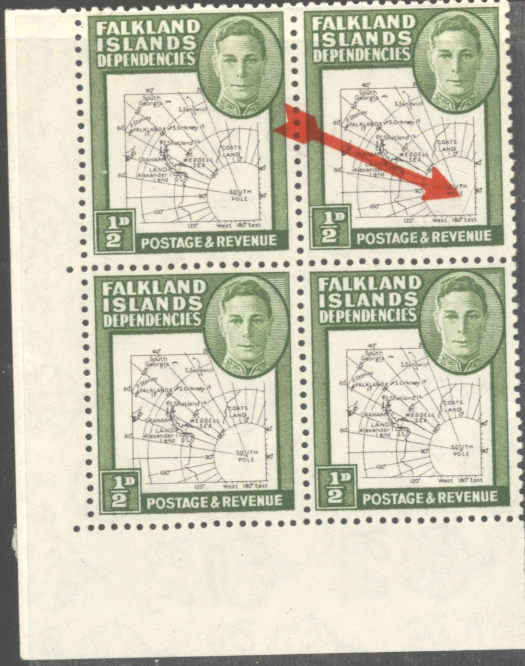


Damaged paper
by frame - it 60°
shows on reverse
so part map print
Damaged before
or after printing.

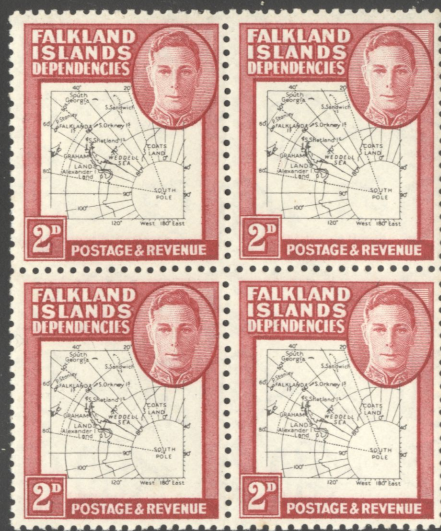
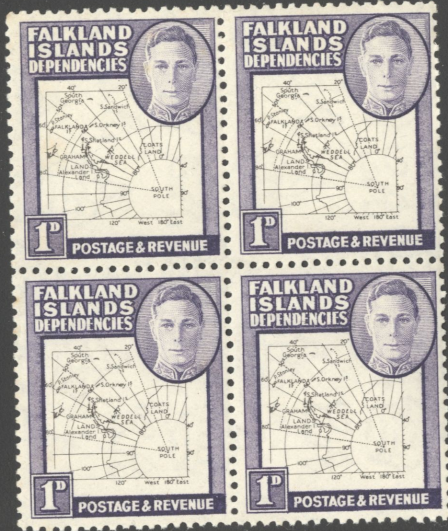


Dot centre
Plate colour
in frame 4.0 dot



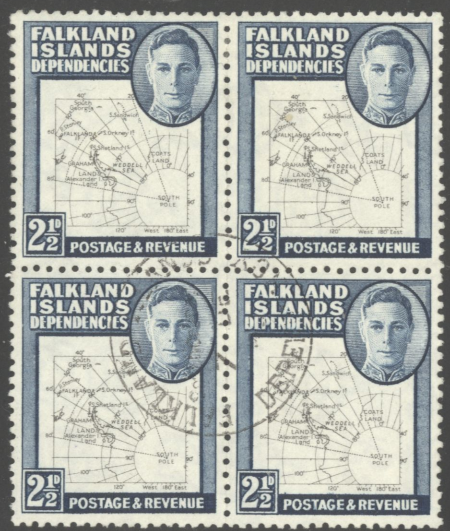


911
DOT ON 'T'
OF SOUTH.
Pos 4/2





THOMAS DE LA RUE & COMPANY, LIMITED, LONDON



1

2



1

3



1

3

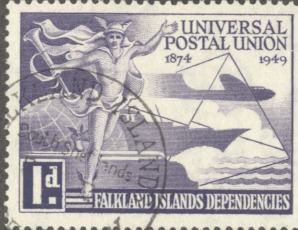
EXTRA THIN LINES
TO VIGNETTE

DEEPER
BLUE
FRAMES



DOT ON
K

ON





Stamp #10.50

69

68

67

66 Y1 £9

62

61

60

Stamp #45 on cover

Grahamland

1956



SH64



HARRY ALLEN,
6 Florence Road,
London, W.5.,
England.

SH60

Cancellation £10



SH64

Stamp #45 on cover



SH60

HARRY ALLEN,
Rickmansworth,
Herts, England

BY AIR MAIL
PAR AVION
AIR LETTER
AEROGARME



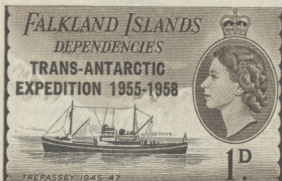
BRIDGER & KAY, LTD.,

86, STRAND,

LONDON, W. C. 2.

21 (BASE Z)

8-



Waterlow & Sons Limited, London Wall, London, E.C.



Mr. H. T. LUXTON
5 FITZROY ROAD
PORT STANLEY
FALKLAND ISLANDS





76



60

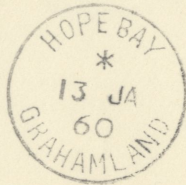
poor cancellation
50
Cover 1/15

HARRY ALLEN,
6 Florence Road,
London, W.5.,
England.



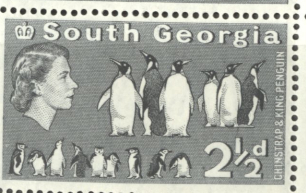
of lower
BROKEN & TOP FRAME RECUT
of lower
Cat. Year _____ Selling Price 15⁰⁰

Cancelled 4/10



£25 SH 65

HARRY ALLEN,
Rickmansworth,
Herts, England



1B





SG 8x
£450

SG 7
£100





Country _____ Cat. No. (MR2) (SG71) NH 2) (SG71) NH

Unused Used Hinged Lightly Hinged Never Hinged Never Hinged

Average Fine Very Fine Extra-Fine Fine

Complete Set Short Set Single Block Plate Block Plate Block

Notes SH 36a v4 REVERSED ALBINO O/P IN
RIGHT HAND MARGIN 50^u between

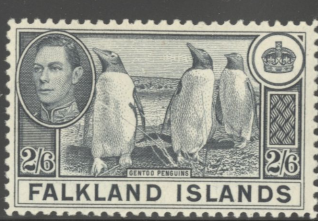
Cat. Value _____ Cat. Year _____ Selling Price 25^u

£30



Slade
L.P.
£160





140d
£500





REGISTERED.
FRAGILE With Care

R Falkland Islands
(Fox Bay)
No 0110



KAVI £1 fu
1938 Printing - 'Colonial', thick paper.
SH936 PS 3 4DE47

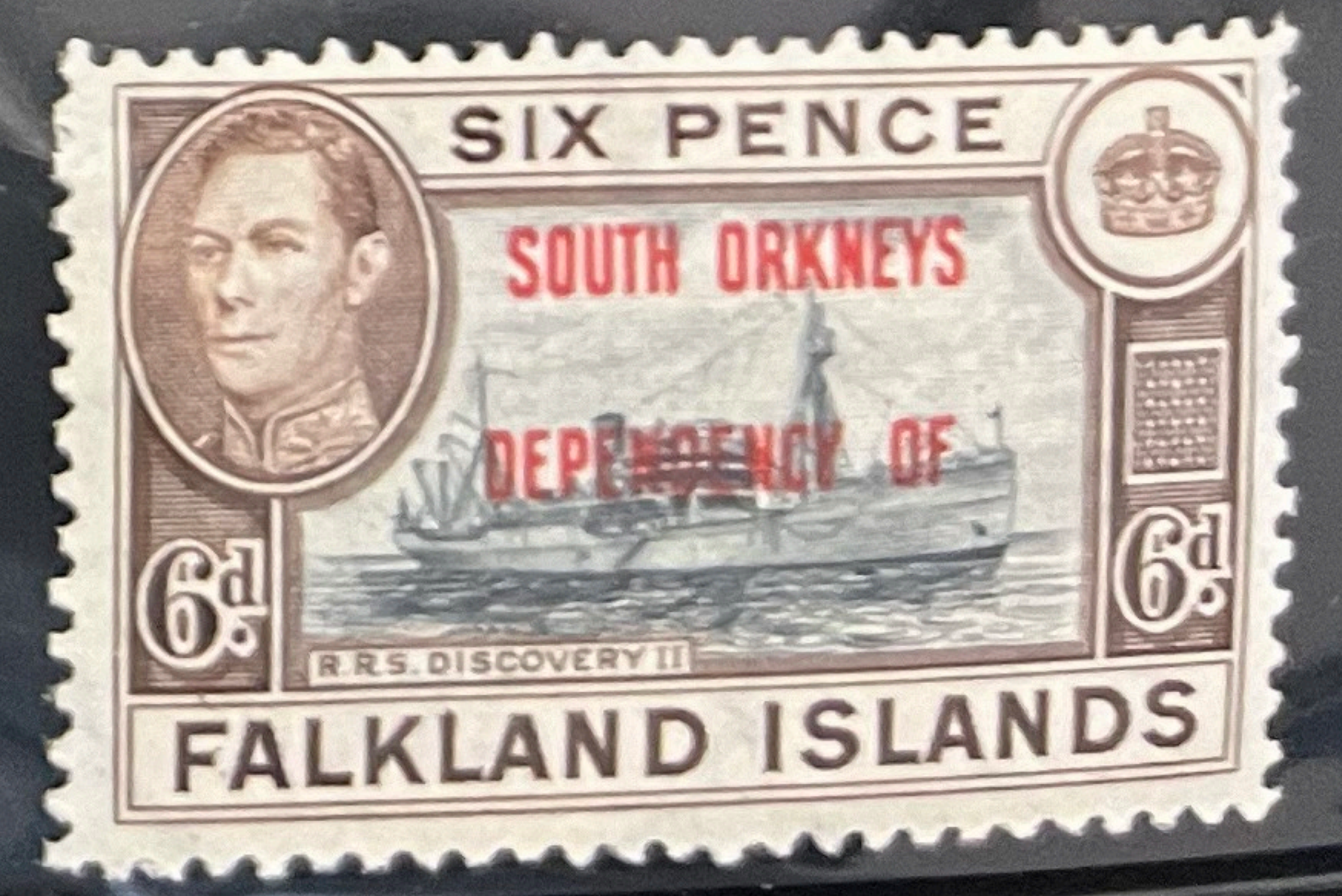
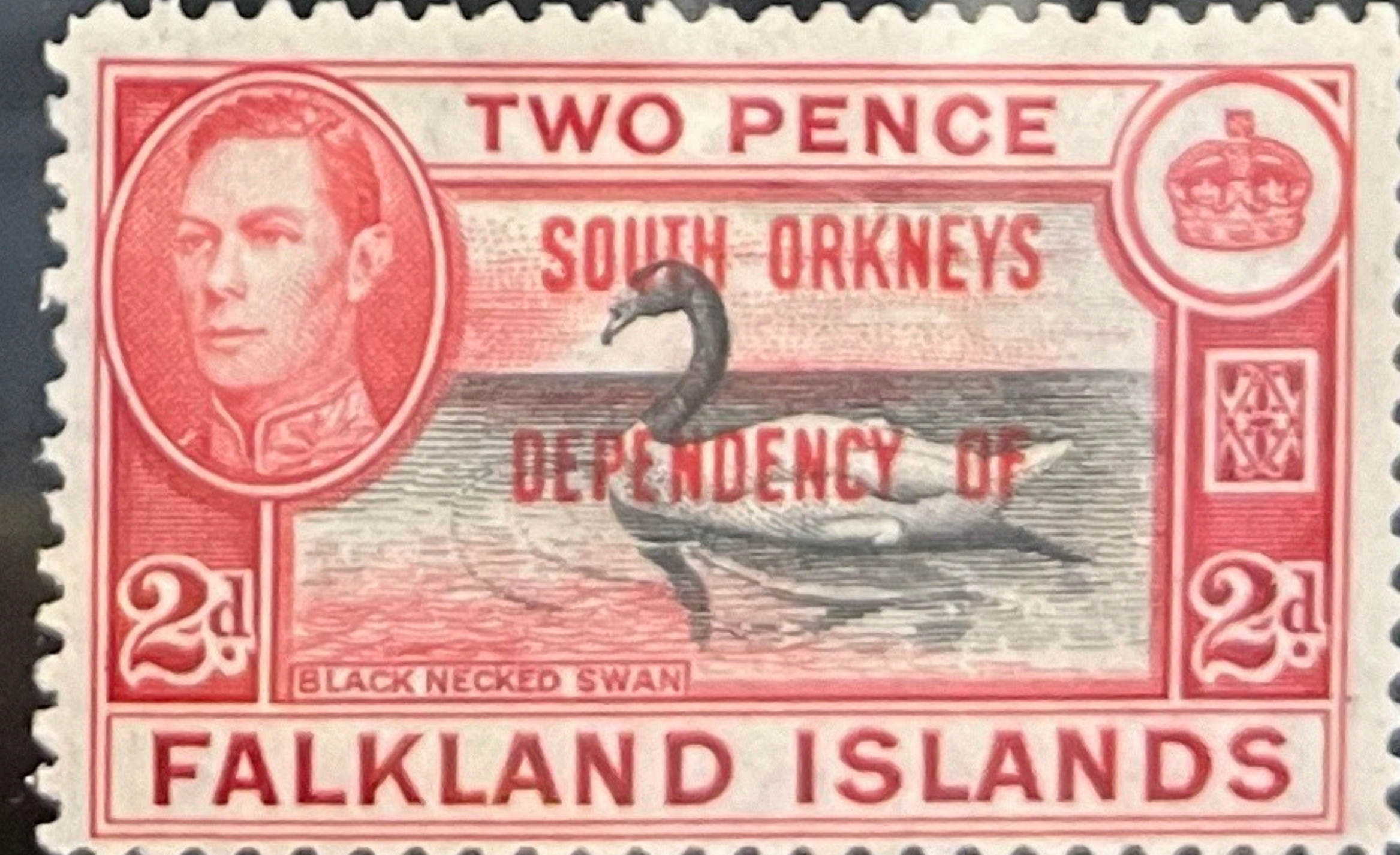
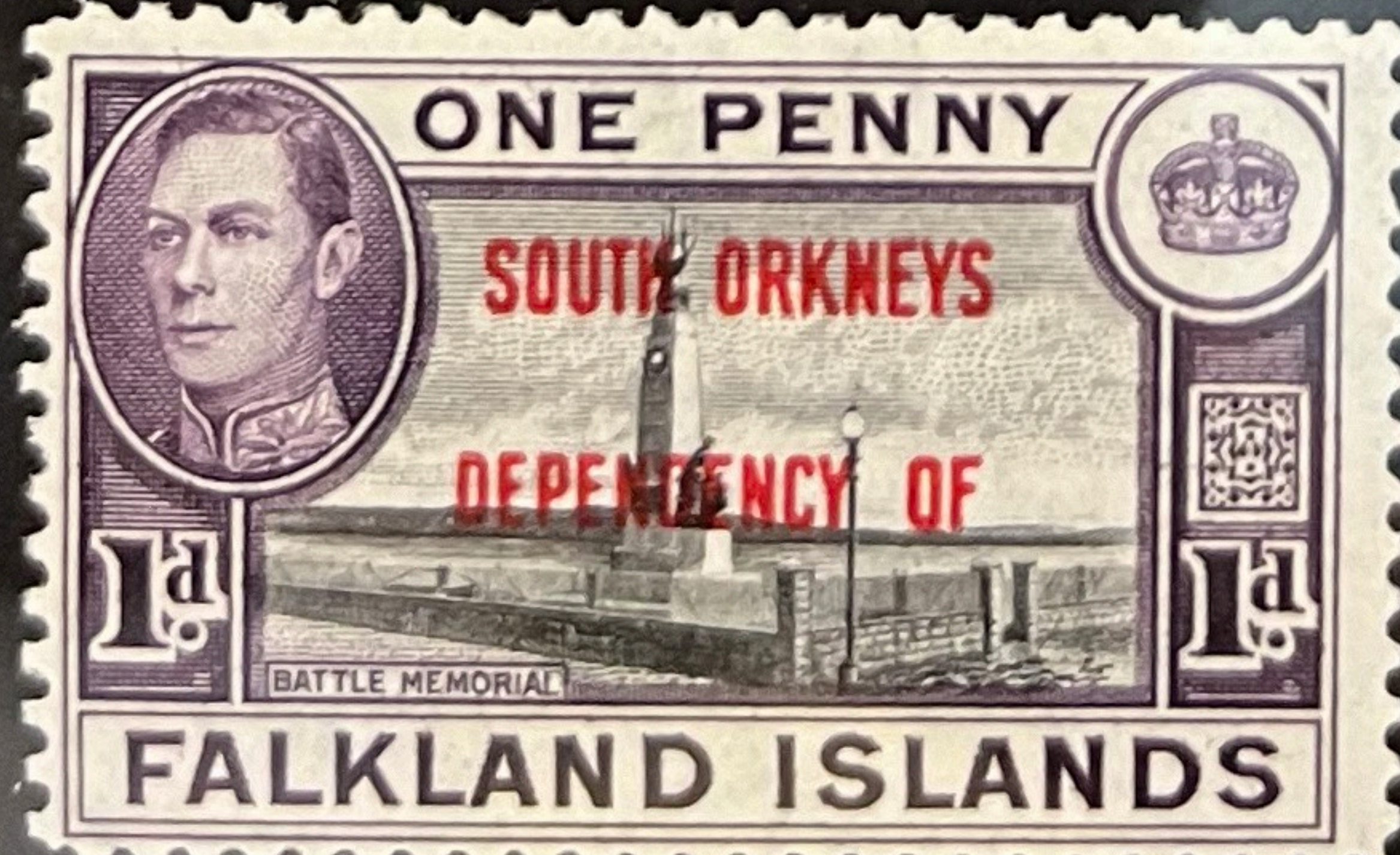
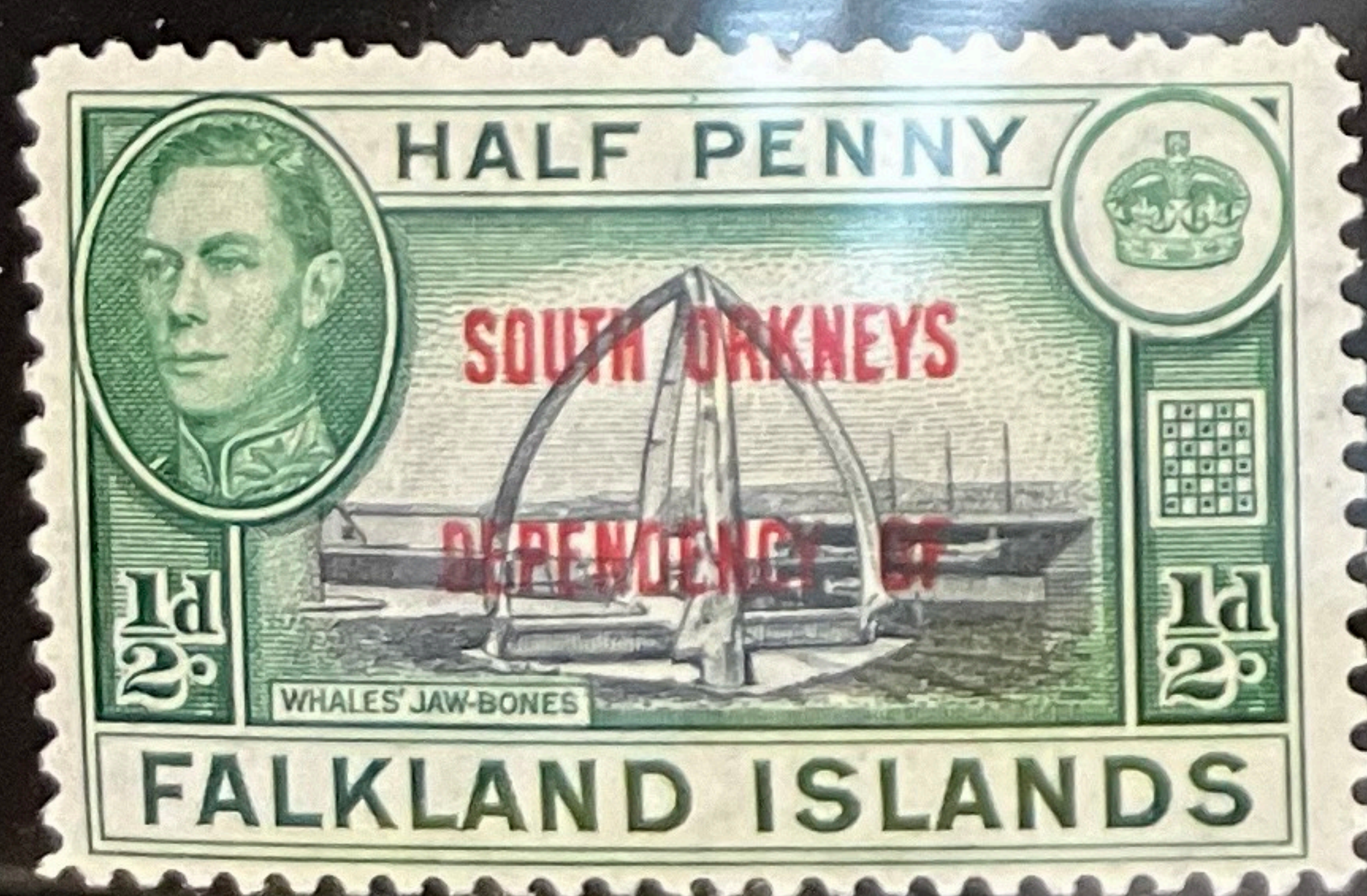
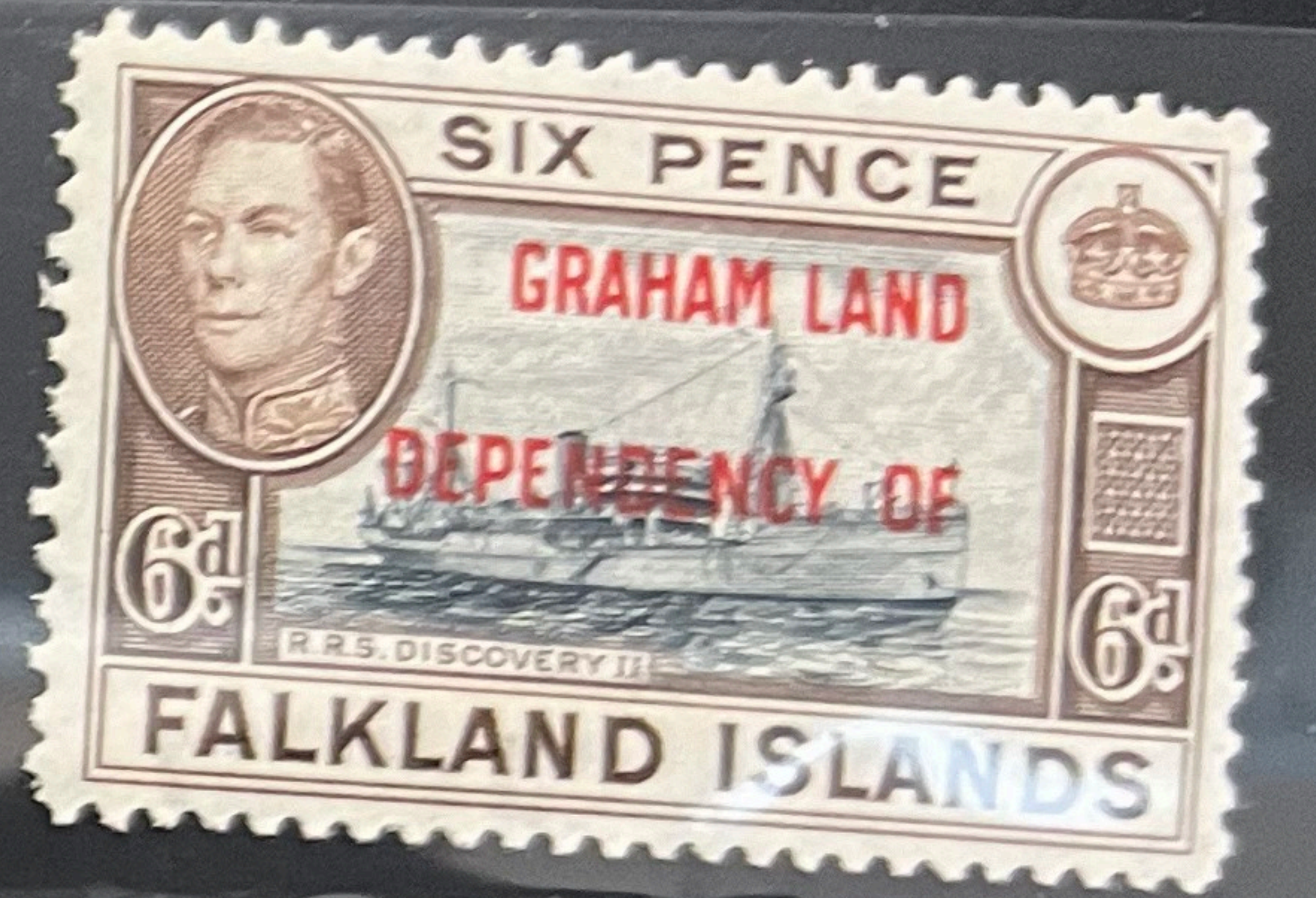


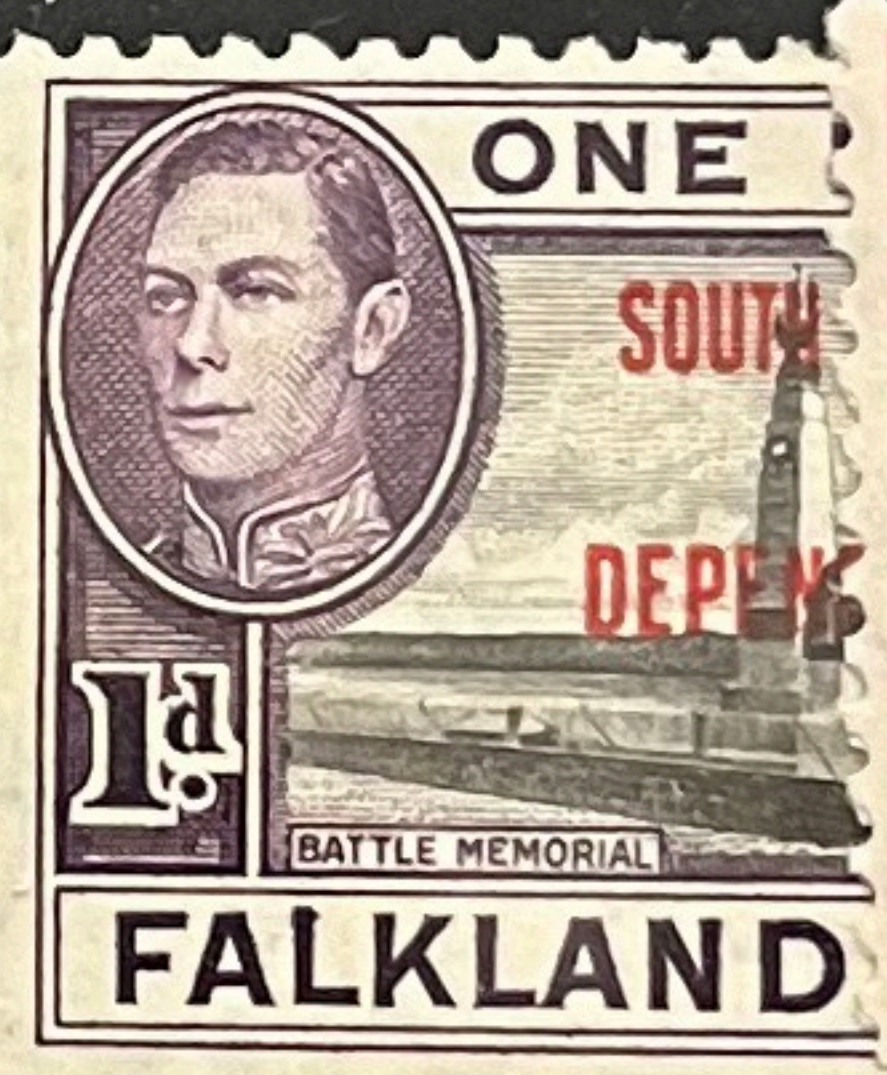
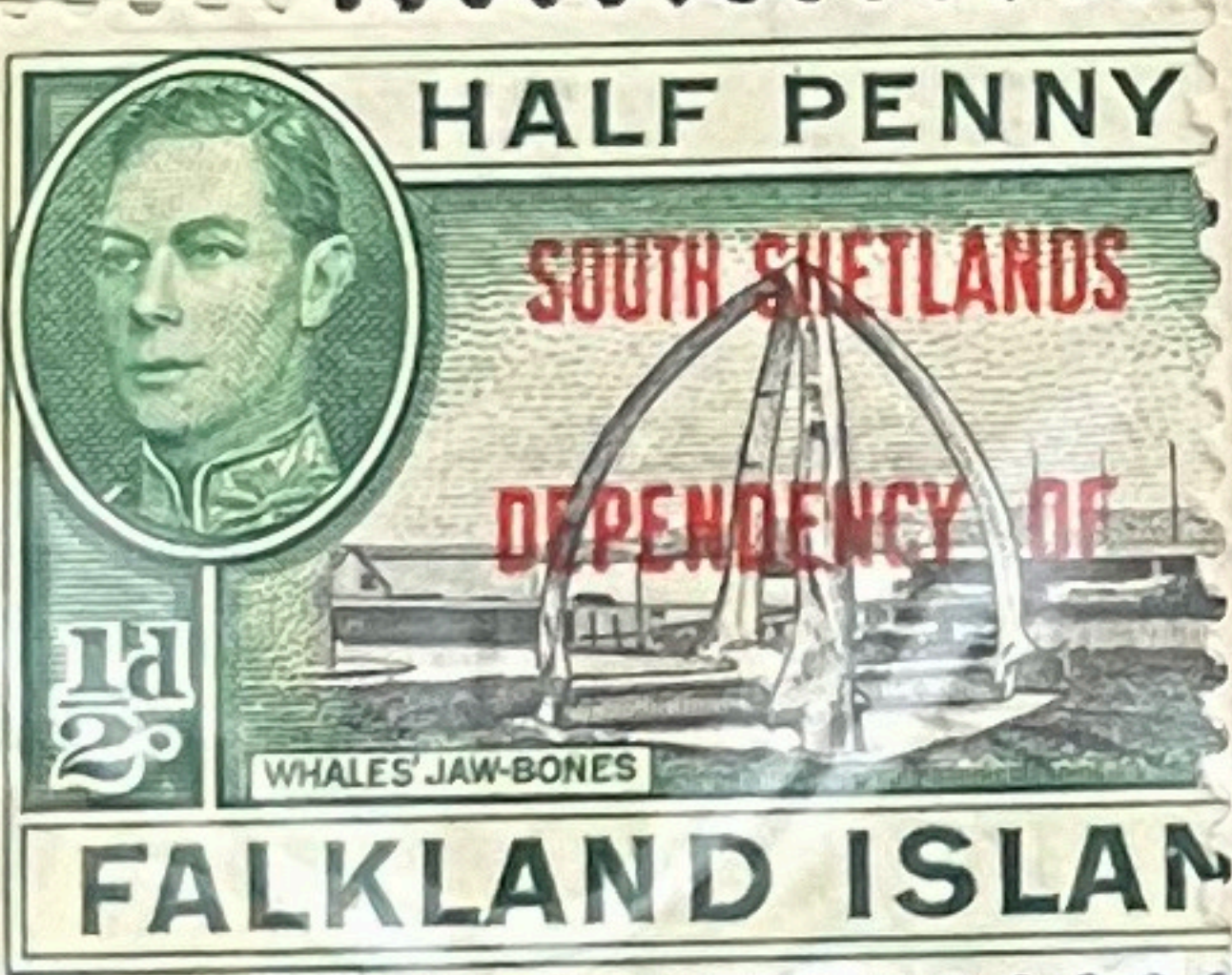
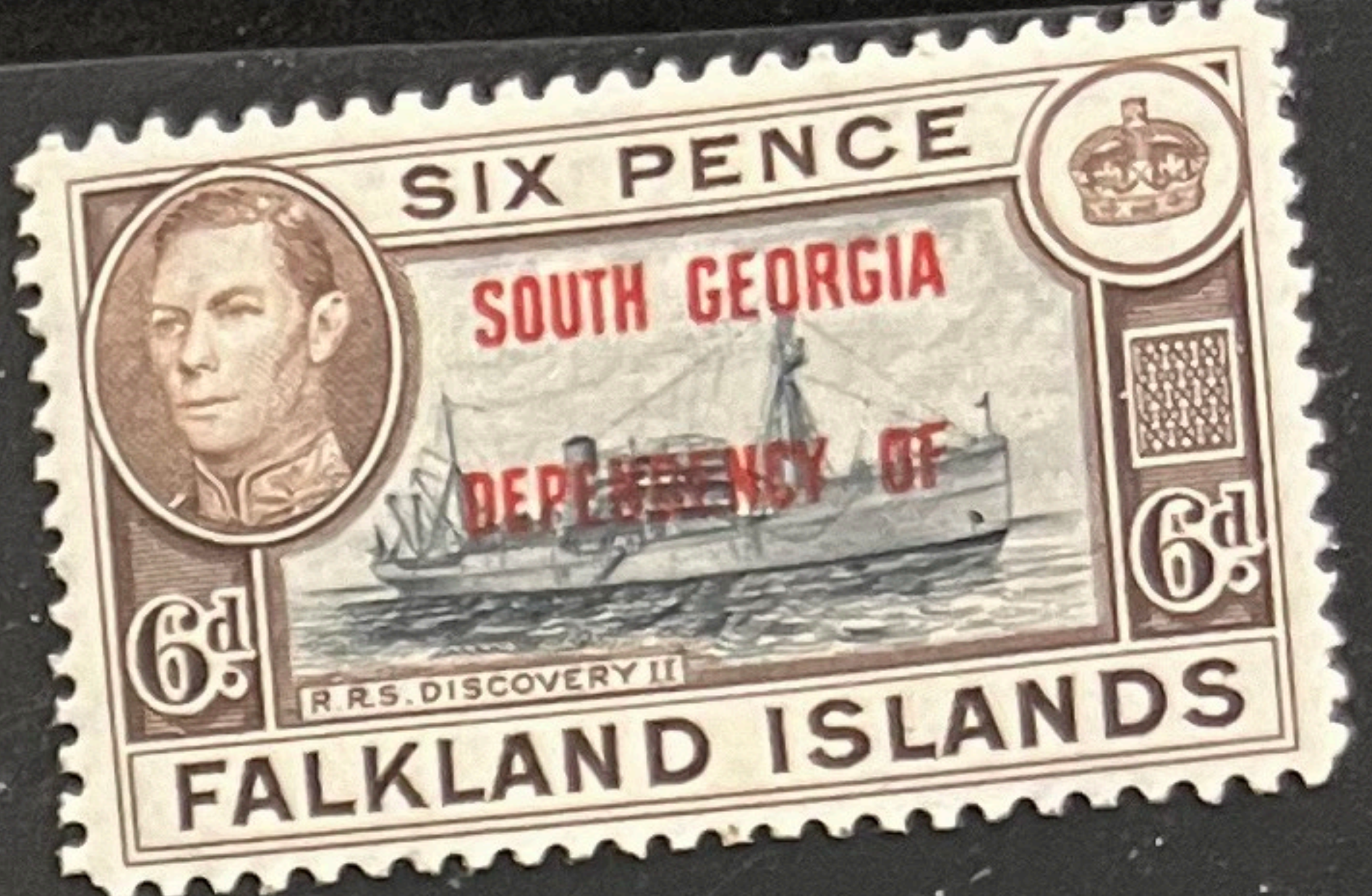
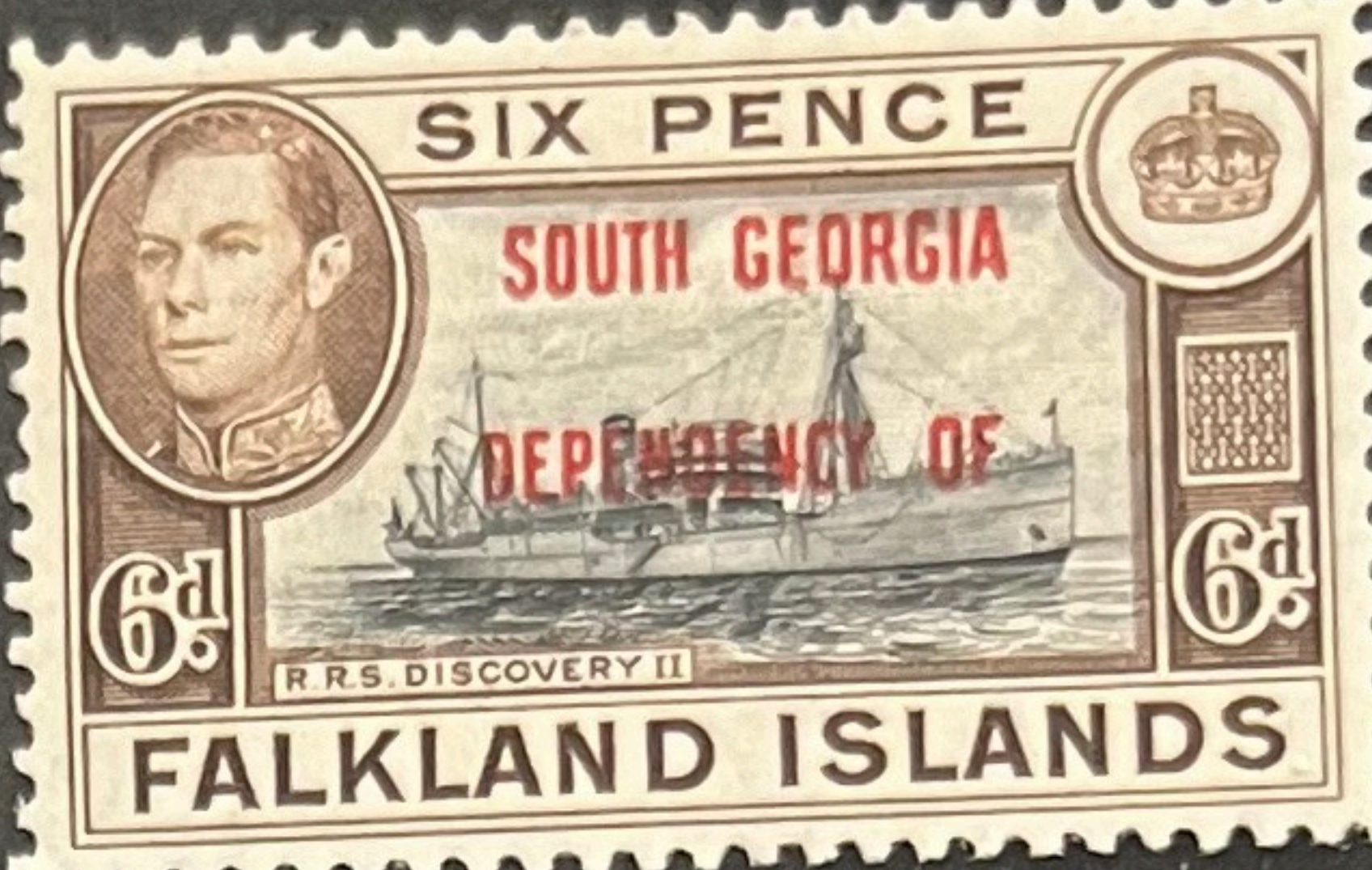
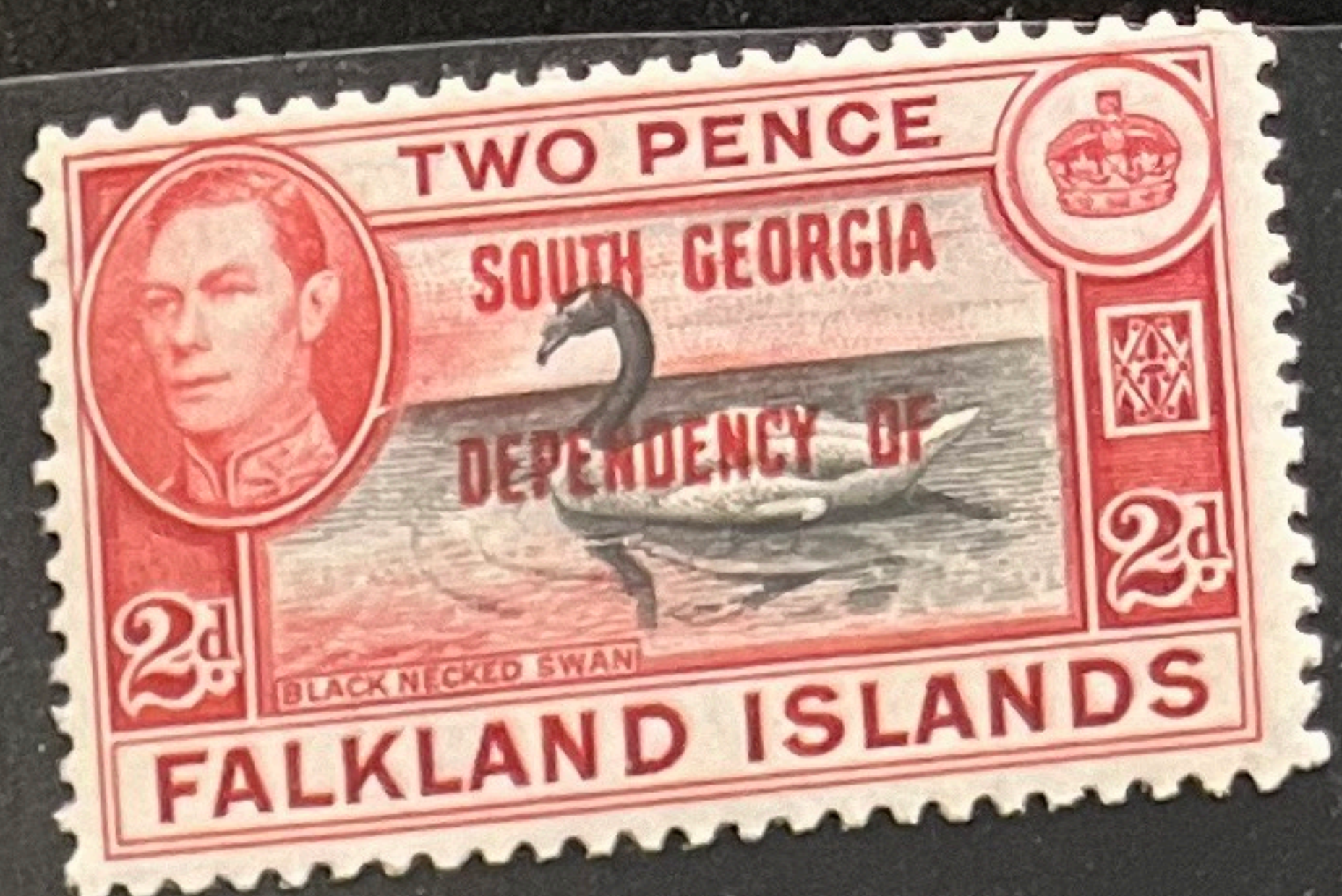
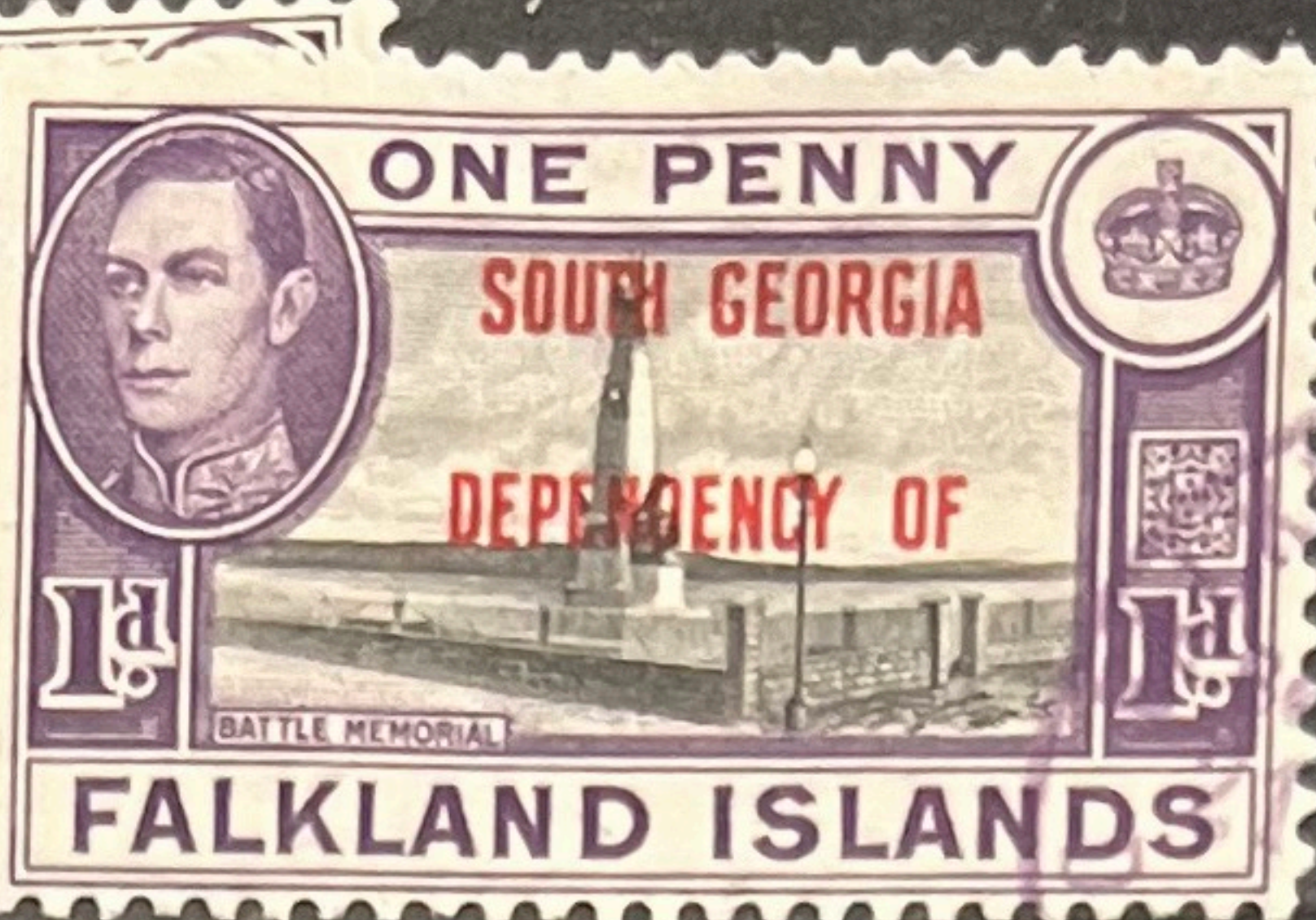
4597



BRADBURY, WILKINSON & CO. LTD., NEW MALDEN, SURREY, ENGLAND.





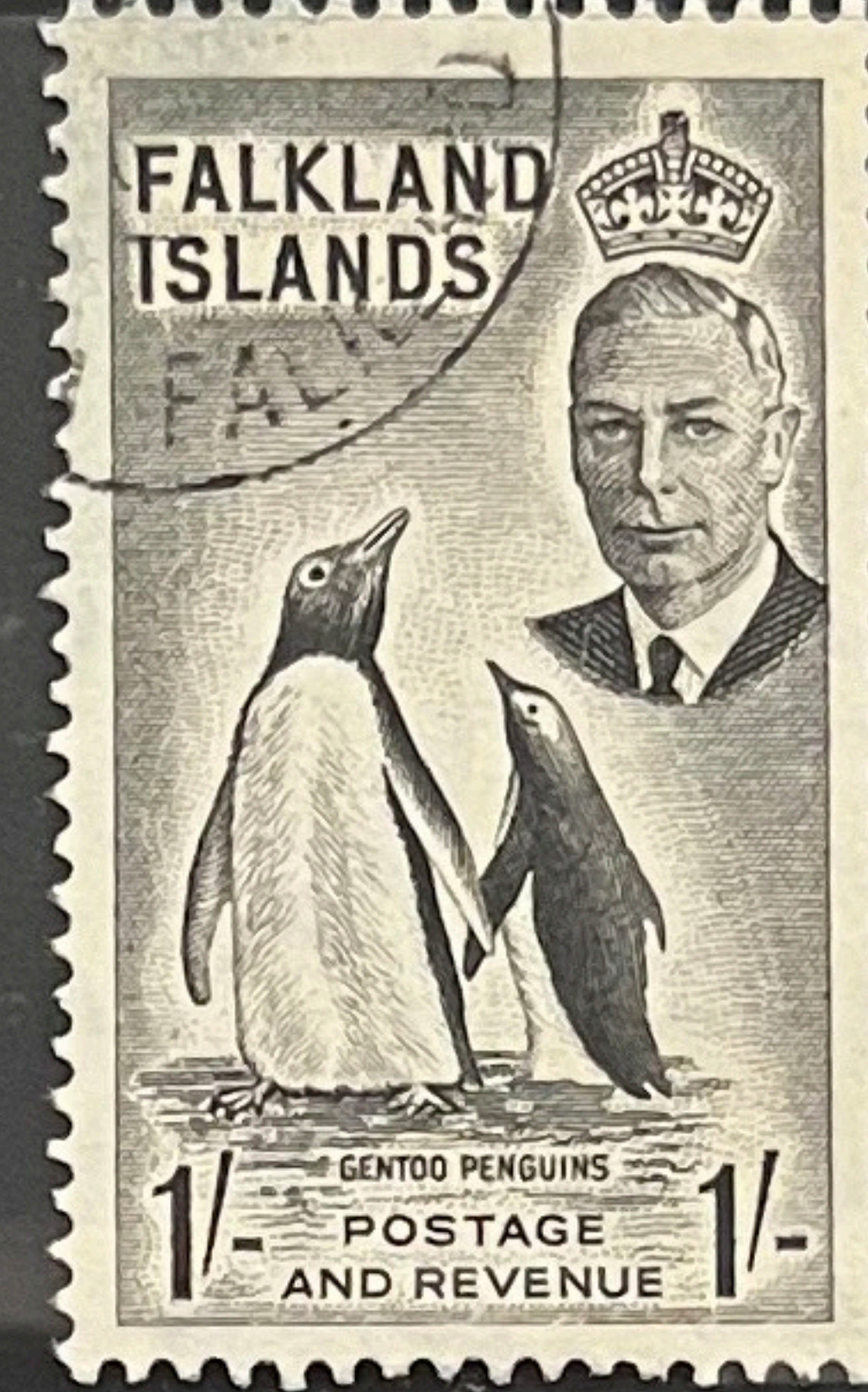
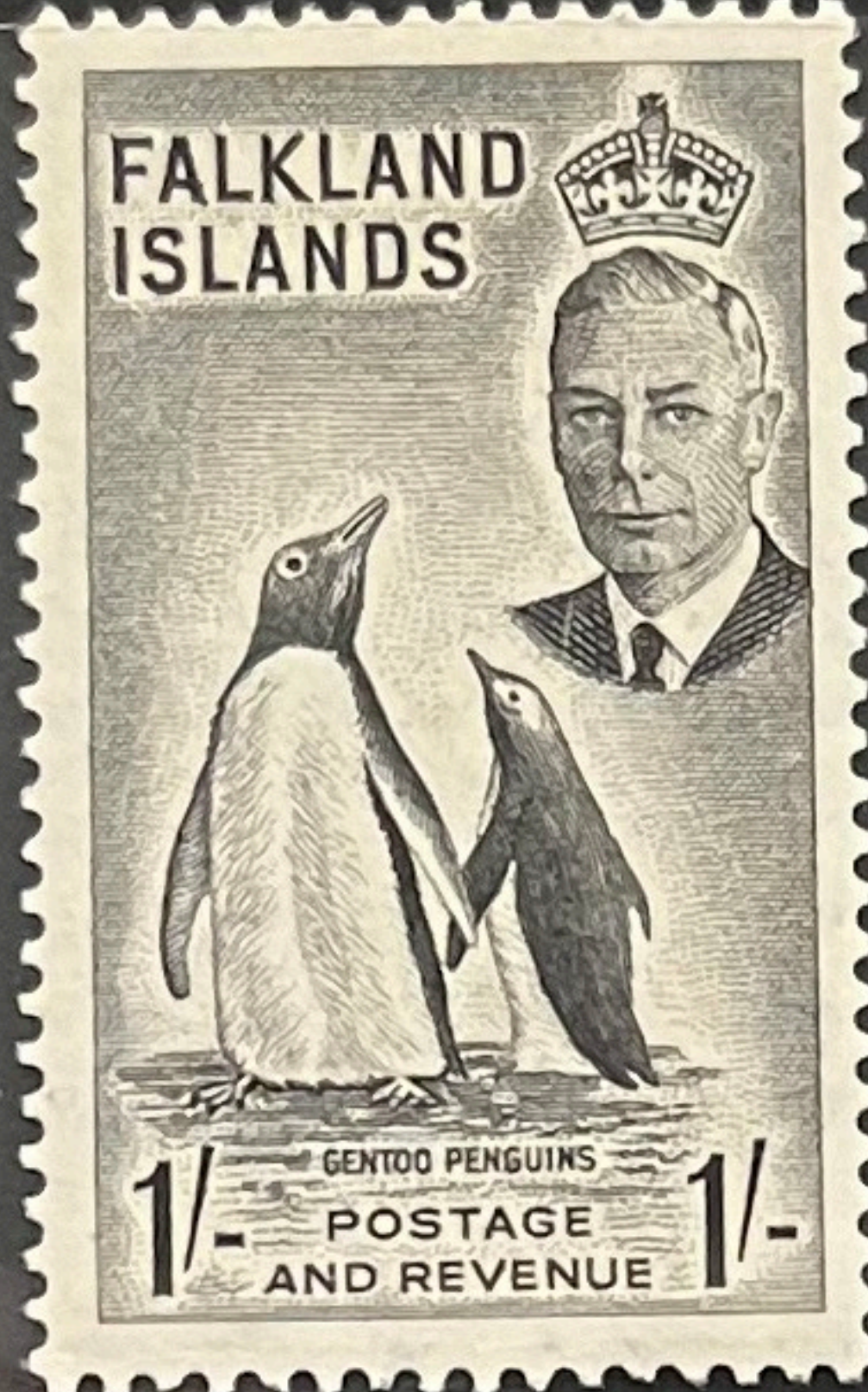






54 102
v2
£65





Made in Germany



SH123C. ✓ 2 WEAK ENTRY UNDER "FA" pos 60
 Value _____ Cat. Year SH 40 Selling Price 40⁰⁰





LETTERS PARTIALLY DOUBLE "DY" LL stamp

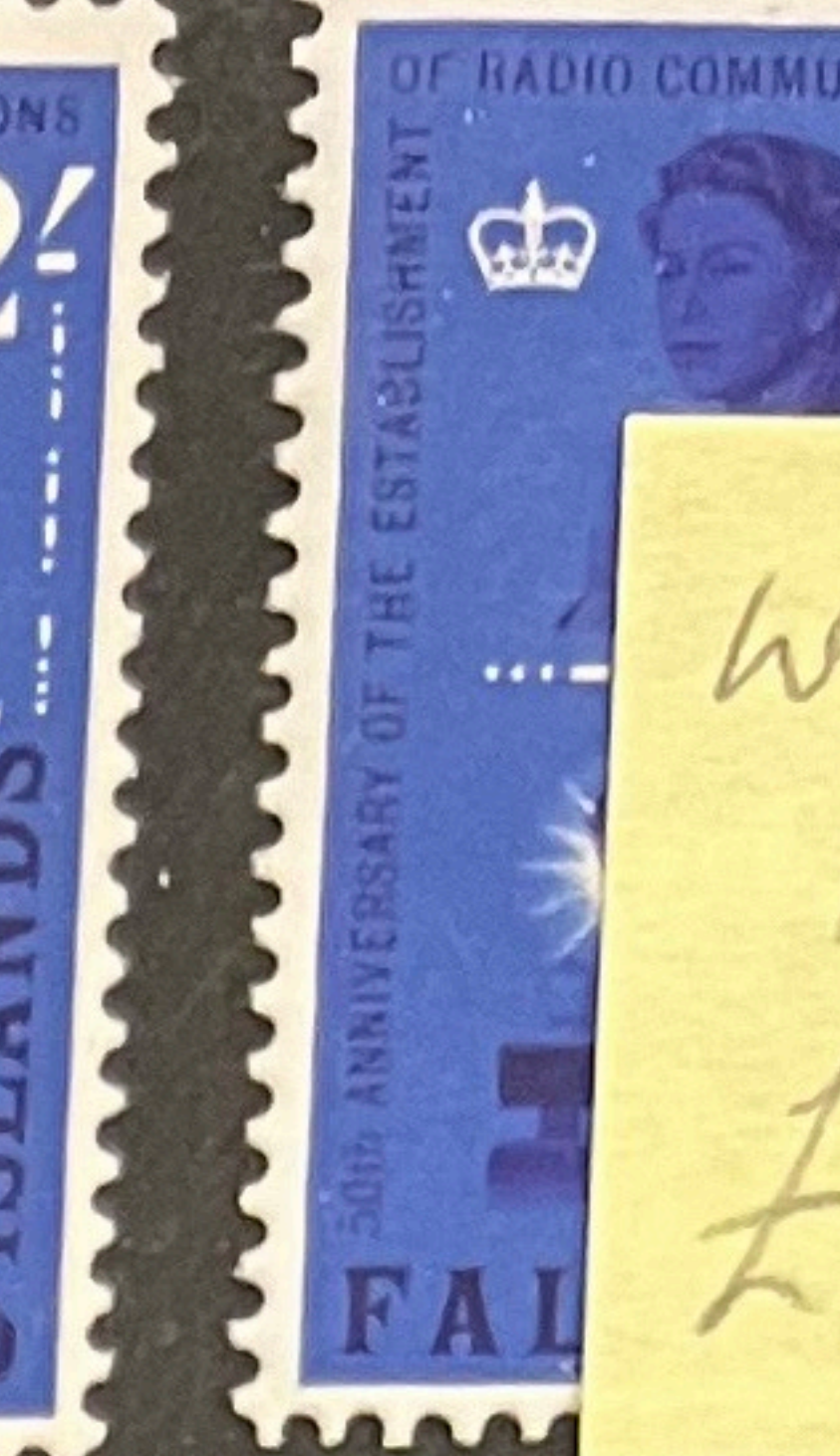
SH256

Cat. Year _____ Selling Price _____

Made in Germany







work
INV,
£80



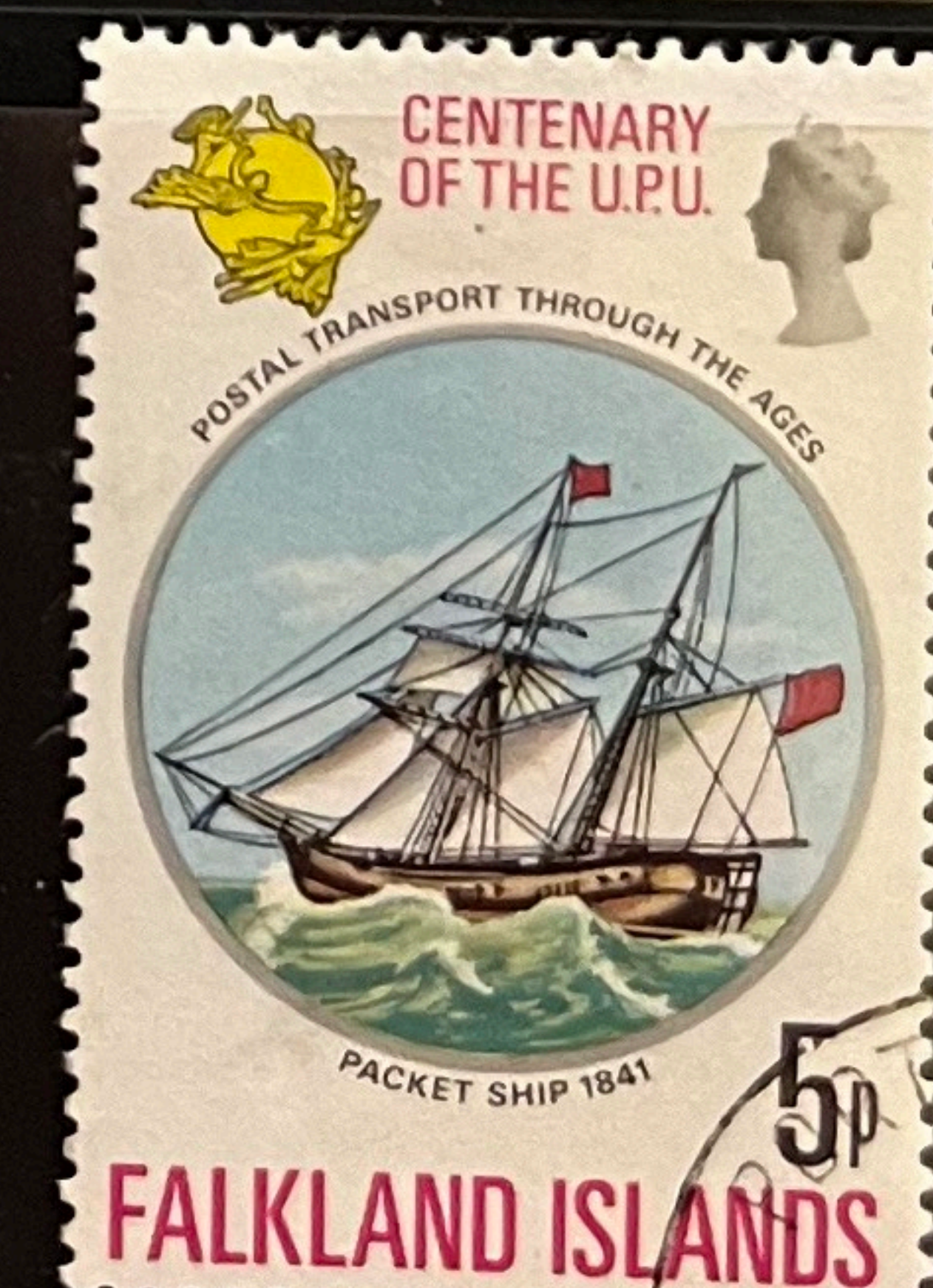
WHIC
INV
£400













CENTENARY OF THE BIRTH OF
**SIR WINSTON
CHURCHILL**
1874
1974



CENTENARY OF THE BIRTH OF
**SIR WINSTON
CHURCHILL**
1874
1974



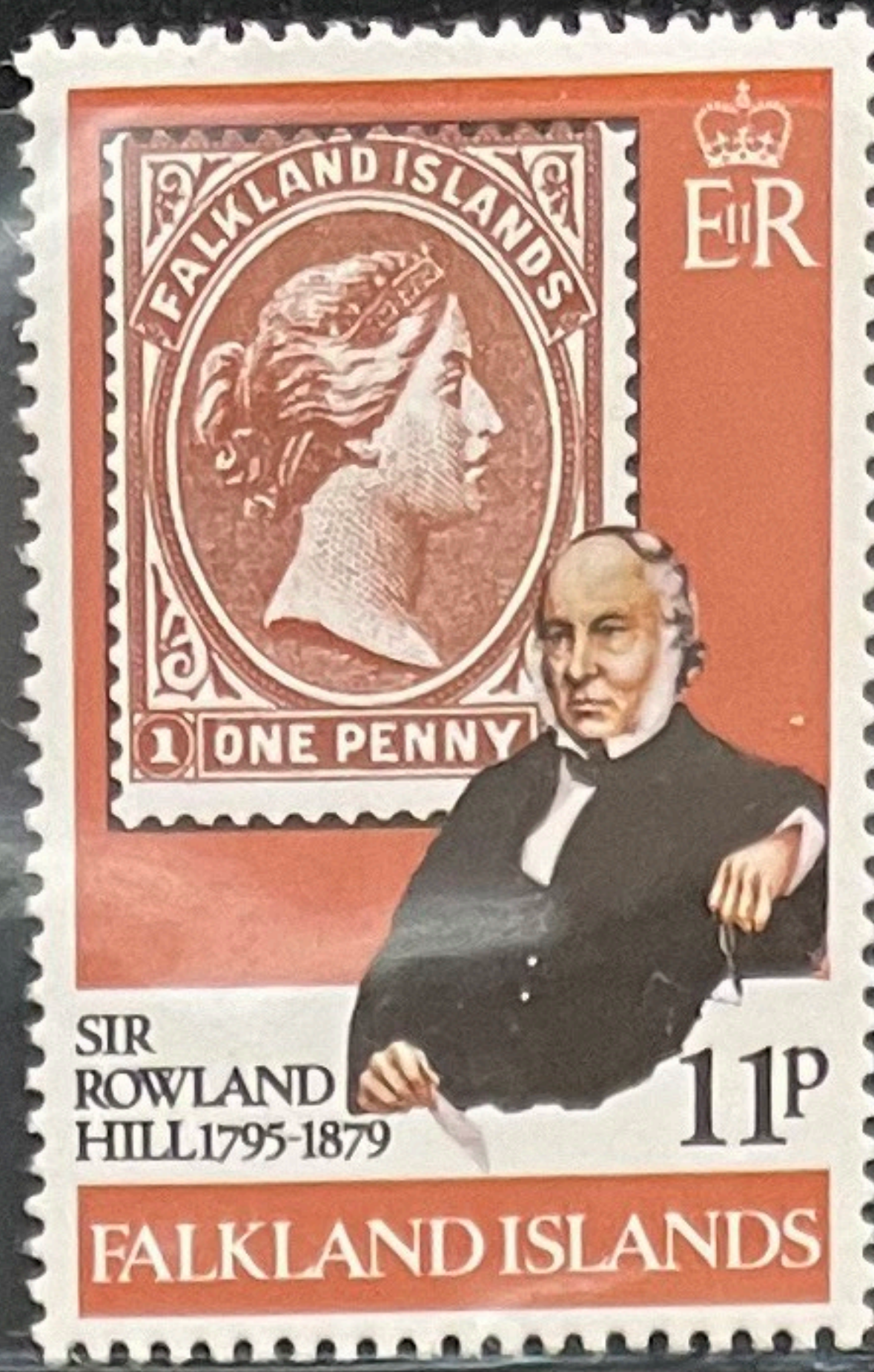








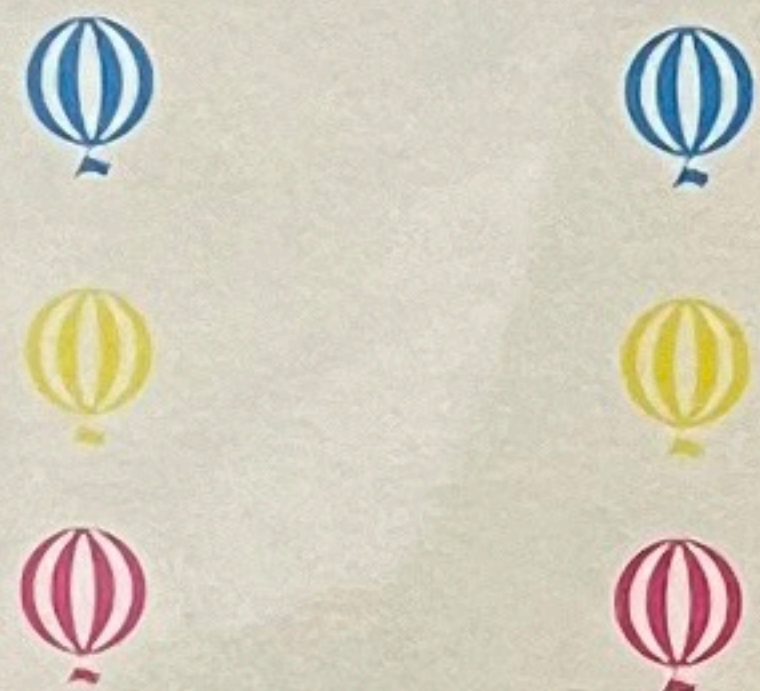
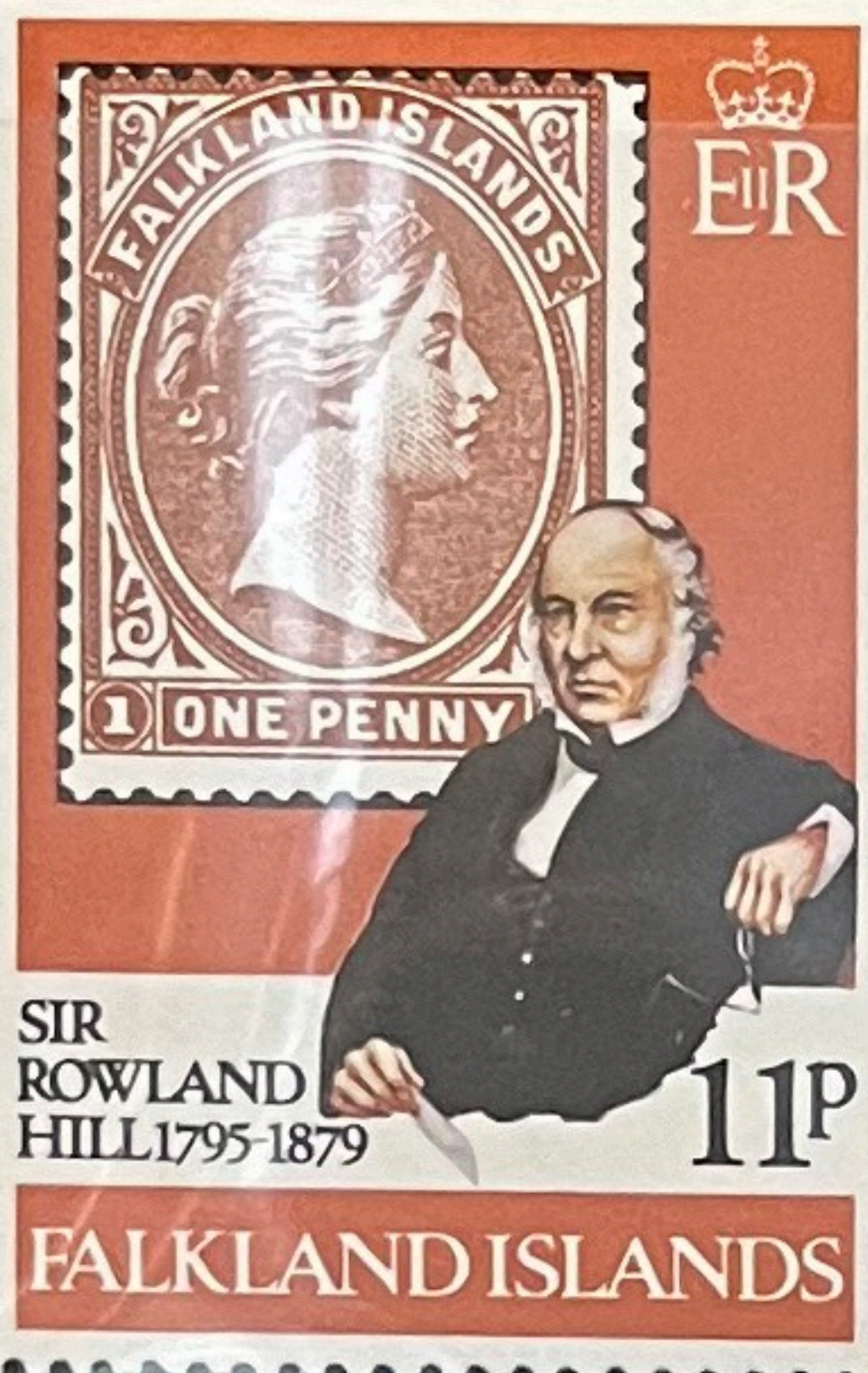




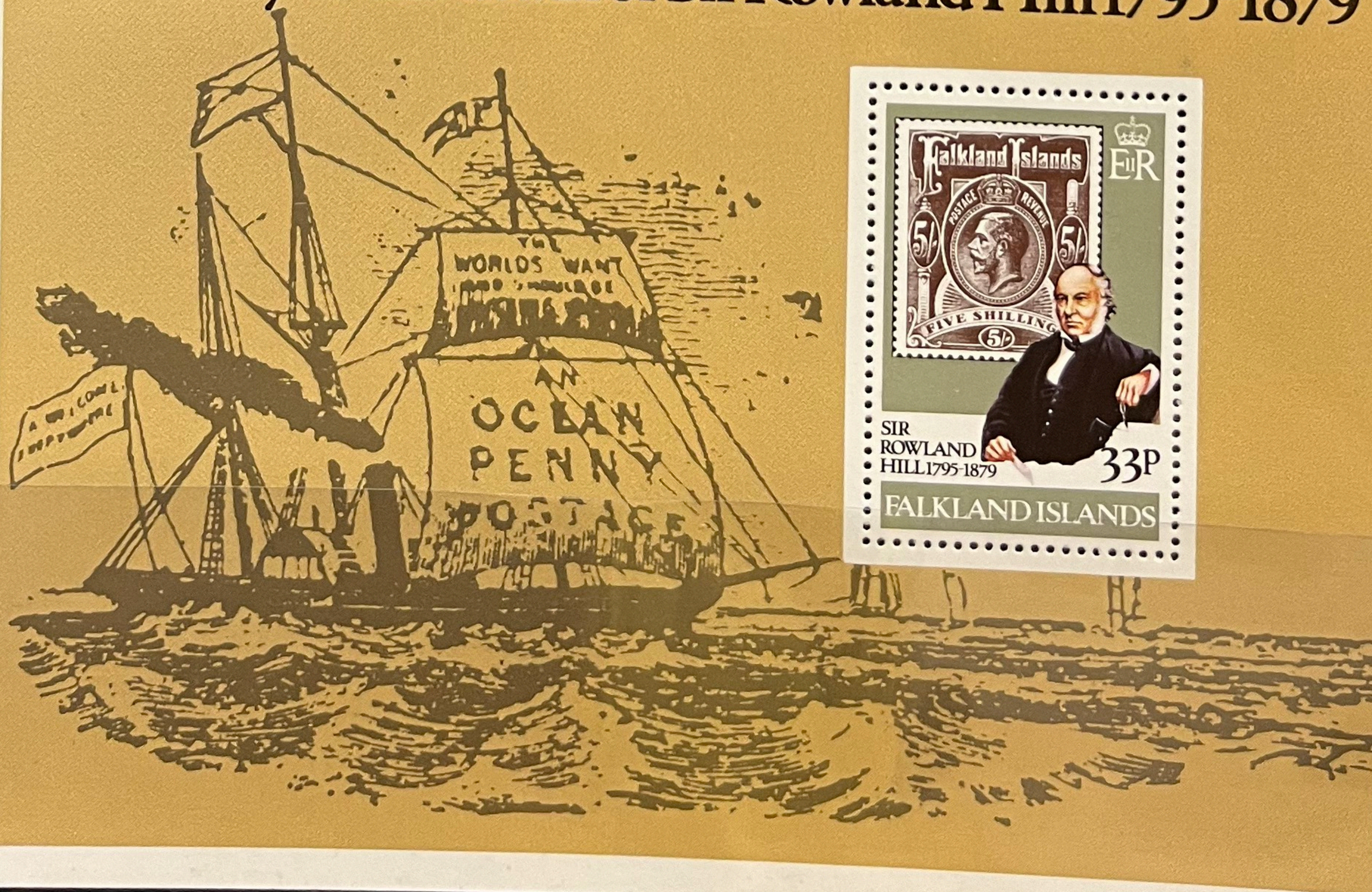
of Questa



of Questa



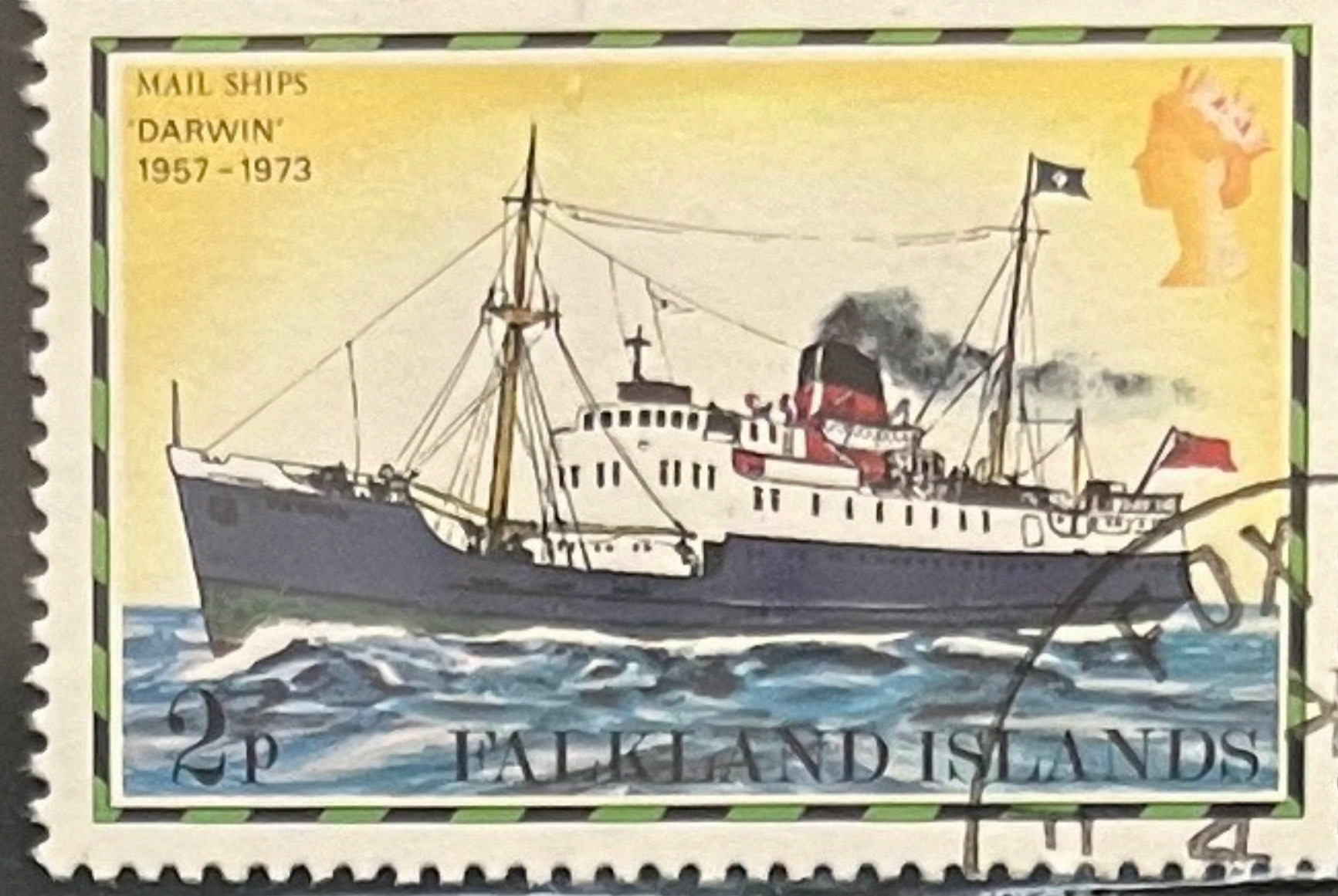
Centenary of the death of Sir Rowland Hill 1795-1879

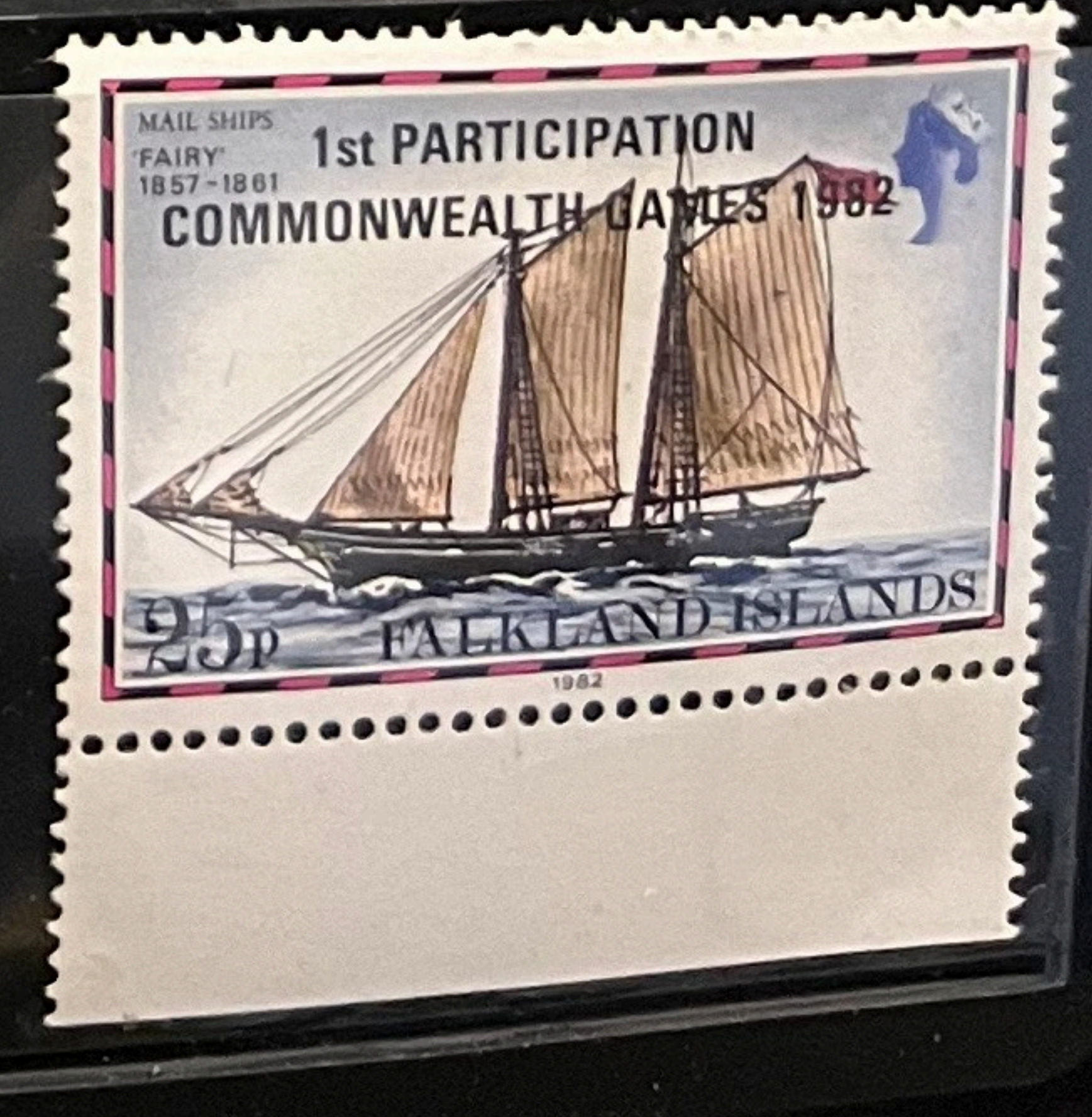


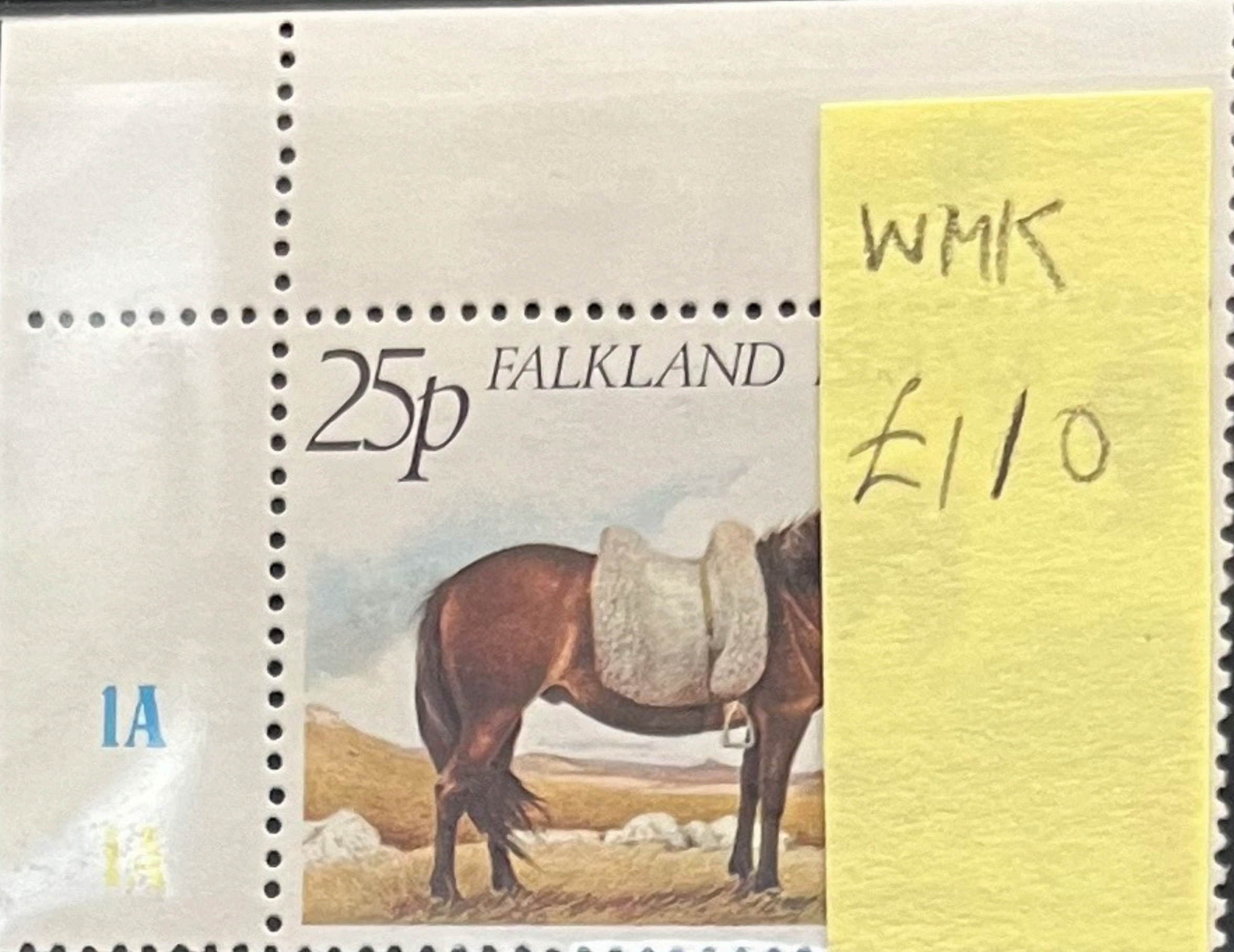


375W
K90









Falkland Islands 'NAUTILUS' 1846-1848



Contents 4x1p, 4x3p, 4x5p, 4x6p, 4x10p. Total £1.00

Falkland Islands 'AMELIA' 1852-1854



Contents 4x1p, 4x3p, 4x5p, 4x6p, 4x10p. Total £1.00


Falkland Islands 'FAIRY' 1857-1861



Contents 4x1p, 4x3p, 4x5p, 4x6p, 4x10p. Total £1.00

Falkland Islands


25p



Garthpool

FALKLAND ISLANDS

Contents
5x25p
5x6p = £1.55
Cape Horners Series 1
Airmail Rate



Falkland Islands



contents
 8 x 2 p
 4 x 7 p
 4 x 20 p
 4 x 25 p

Insect series I Issue release 18 February 1985

Falkland Islands



contents
 8 x 2 p
 4 x 7 p
 4 x 20 p
 4 x 25 p

Insect series I Issue release 18 February 1985

Falkland Islands



£2.52
 contents
 4 x 1 p
 4 x 4 p
 4 x 6 p
 4 x 8 p
 4 x 9 p
 4 x 10 p
 4 x 25 p

Insects series III

