

N<sup>o</sup> 2

ENGRAVED AND PRINTED AT THE COMMONWEALTH TREASURY, MELBOURNE



SG 17 ✓  
BW 59(2)Z



SG 58/BW 83A.  
SINGLE W/MK  
1 1/2<sup>o</sup> BLACK/BROWN



SG 87.  
PLATE 4.  
4 MUH



Small dot

3/27



10/27

SG ~~96~~ 96  
PLATE 1,2,3,4  
in BLOCKS OF 4.  
STAMPS M.U.H







94. BROKEN "A" L.R. STAMP.

105



SG 126  
PLATE 1



126  
PL 3





Wmk  
invert

SG 96a  
SB 23  
\$150



SG 99aw  
Wmk  
invert  
\$150



SG 127  
\$150





✓  
120



1  
62



1  
63







Sg 106  
SB 22  
MULT  
#40



SB28.  
\$75/  
MUH



SB29  
MULT  
\$40



F.M.  
\$100-

WHAT  
SG  
#?



Australia 6c  
Lachlan Macquarie  
1761-1824  
Governor of N.S.W.

Australia 6c  
Edward John Eyre  
1815-1901  
Explorer

ANDREW FISHER  
Andrew Fisher  
Prime Minister  
1908 - 1909  
1910 - 1913  
1914 - 1915

W. M. HUGHES  
W. M. Hughes  
Prime Minister  
1915 - 1923

7c Australia  
W. M. HUGHES  
7c Australia

479/82  
Panes (4)  
\$20!

7c Australia

Australia 5c  
A. B. (Banjo) Paterson  
1864-1941  
Poet

Australia 5c  
Edgeworth David  
1858-1934  
Geologist

Australia 5c  
Albert

Australia 5c  
Caroline Chisholm  
1808-1877  
Social Worker

Australia 5c  
Caroline Chisholm

Australia 5c  
Caroline Chisholm

432/5  
\$20

Australia 6c  
Adam Lindsay Gordon  
1833-1870  
Poet

Australia 6c  
John Duigan  
1882-1951  
Reginald Duigan  
1888-1966  
Pioneer Aviators

7c Australia  
S. M. BRUCE  
S. M. Bruce  
Prime Minister  
1923 - 1929

7c Australia  
JOSEPH COOK  
Joseph Cook  
Prime Minister  
1913 - 1914

7c Australia  
JOSEPH COOK

7c Australia  
JOSEPH COOK

Australia 5c  
Edgeworth David  
1858-1934  
Geologist

Australia 5c  
Albert Namatjira  
1902-1959  
Artist

Australia 5c  
Caroline Chisholm  
1808-1877  
Social Worker

Australia 5c  
A. B. (Banjo) Paterson  
1864-1941  
Poet

Australia 5c  
A. B. (Banjo) Paterson

Australia 5c  
A. B. (Banjo) Paterson

432/5  
4 Panes  
\$20!





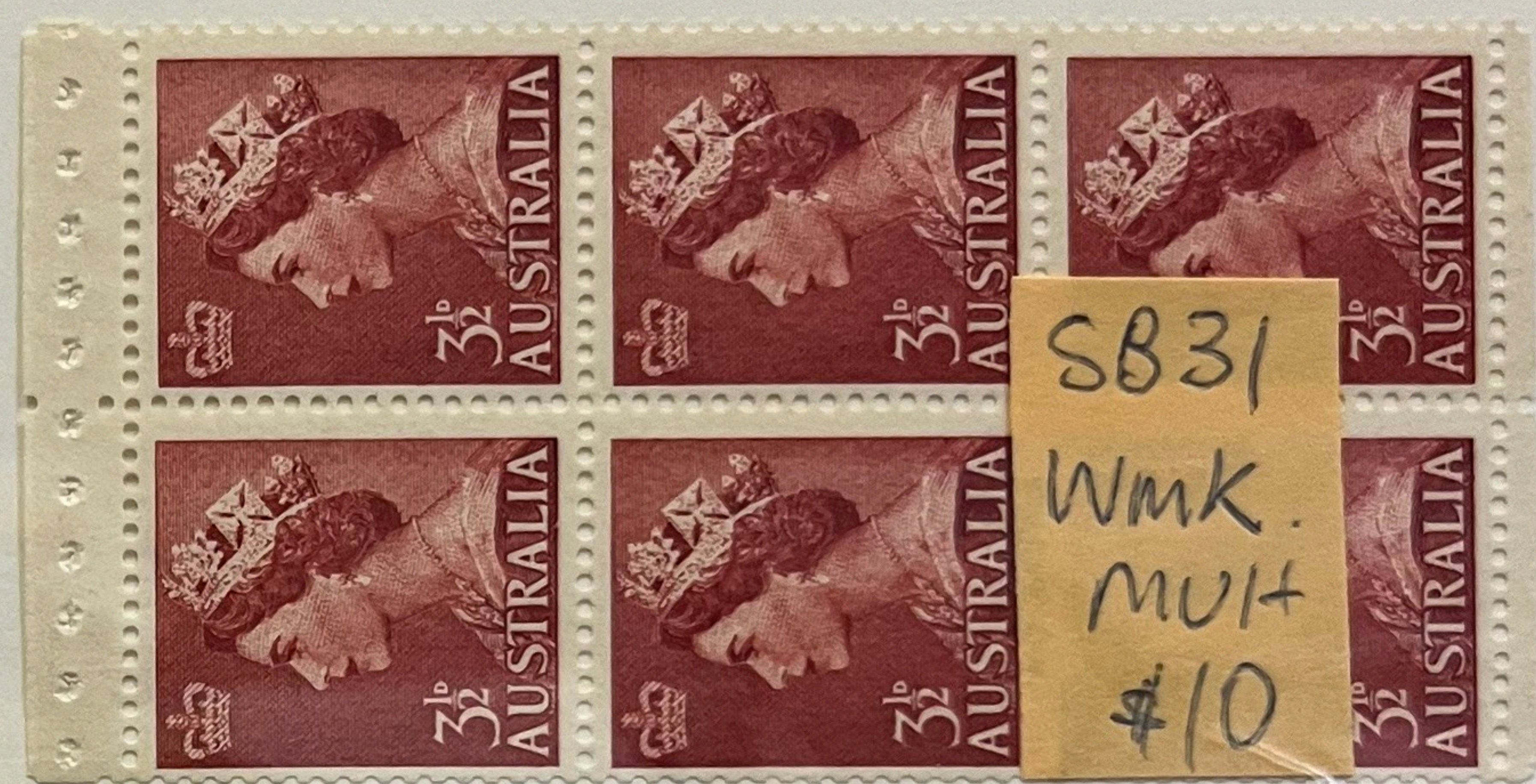
SB 33  
MUH  
\$15



SB 34  
MUH.  
\$30



SB 30  
\$20  
MUH



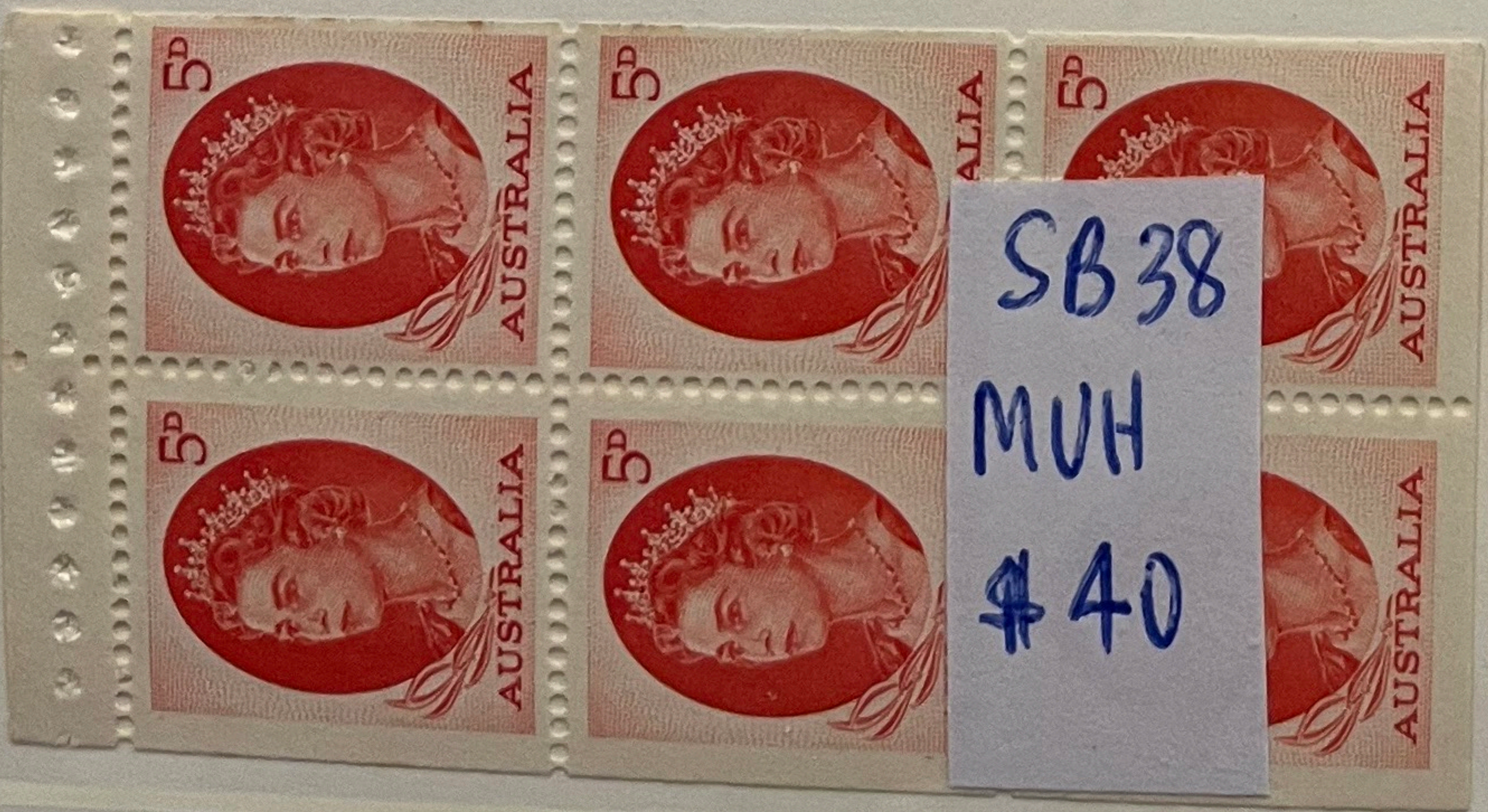
SB 31  
Wmk.  
MUH  
\$10



SB 32  
No Wmk  
MUH  
\$15



SB 35  
MUH  
\$20



SB 38  
MUH  
\$40



SB 33  
MUH  
\$15



9 x 4 in. and  
5 3/4 x 3 1/2 in.  
envelopes  
speed  
your mail



385  
x2  
Pans  
@ \$40  
\$80

Registered  
Post is  
Safest  
for your



Registered  
Post is  
Safest  
for your  
Gifts



Use Postal  
Orders  
for  
Small Sums  
of Money



414  
x 3  
@ \$4  
\$12

Use Postal  
Orders  
for  
Small Sums  
of Money



Post your  
Parcels —  
pack, wrap,  
and tie



Post your  
Parcels —  
pack, wrap,  
and tie  
securely



Send Money  
Securely  
by Money  
Order  
Service



Post  
Early —  
before noon  
and before  
4 p.m.



Send Money  
Securely  
by Money  
Order  
Service







179  
8



180



181a



SG 184a  
MUIH  
\$ 450-  
Superb!



185a  
\$ 30-



203a  
\$ 15-





205  
b



222  
b



228  
c



230  
aa



235  
aa



237  
da



237  
a





Coil  
2376



COIL  
2376

PRINTED BY THE AUTHORITY OF  
THE GOVERNMENT OF THE COMMONWEALTH OF AUSTRALIA



Coil  
2376

PRINTED BY THE AUTHORITY OF  
THE GOVERNMENT OF THE COMMONWEALTH OF AUSTRALIA





262  
aa



262  
aa



309  
a



311  
a



314  
b



354  
ca



Coil  
228d



Coil  
228d





SG 309b.  
cool blk of 4  
MUH.



222c



228d



237b



262ab



311b



314c









262



↓  
262



262aa  
Coil 田  
MNH.  
\$20







263  
262a



✓  
262b  
263a



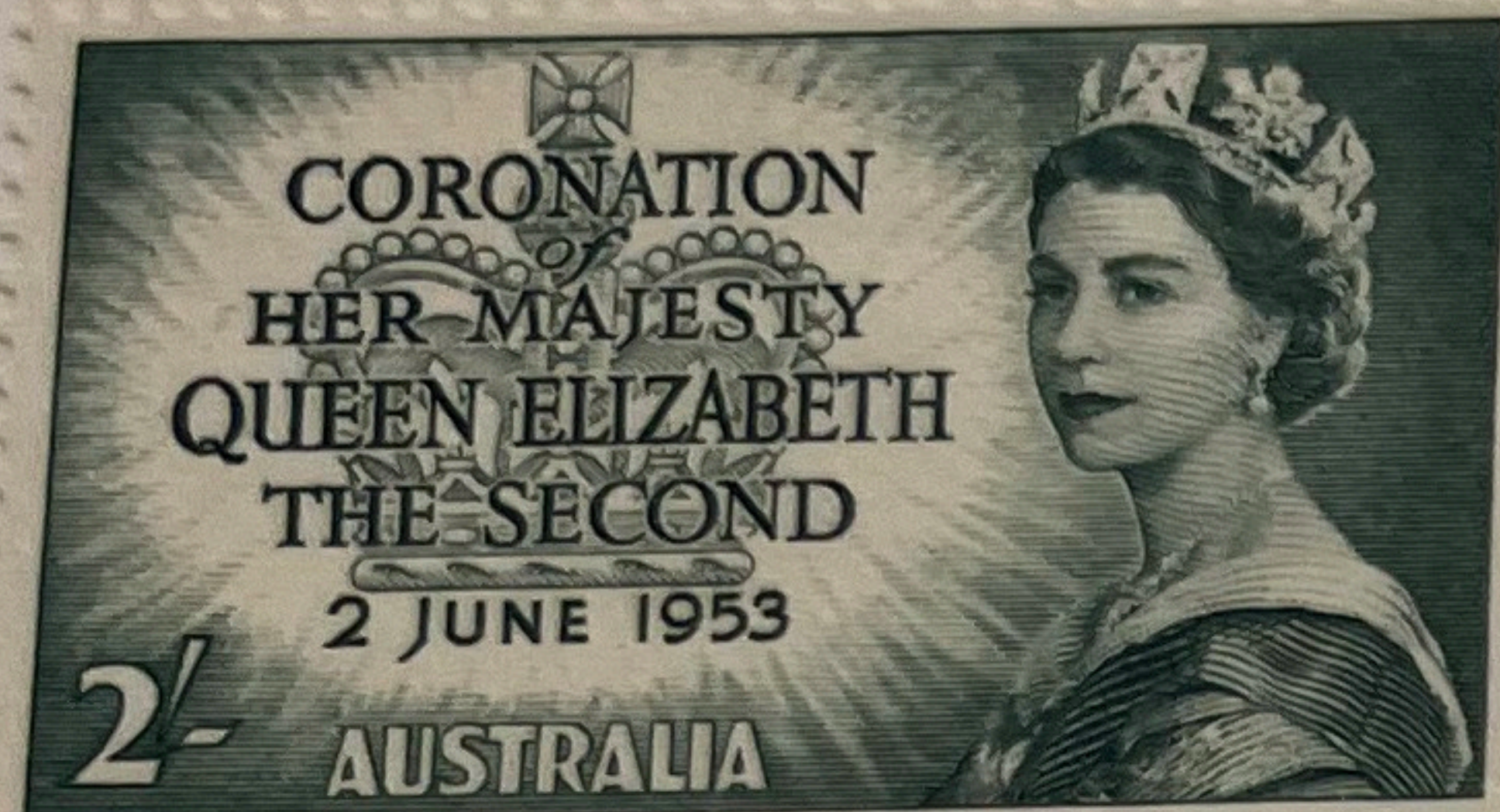


264



265





266







282b



282c



283

Frank D. Hawley -  
DESIGNER -  
ENGRAVER.





282a



314c  
Coil



314c  
Coil



354c



426a

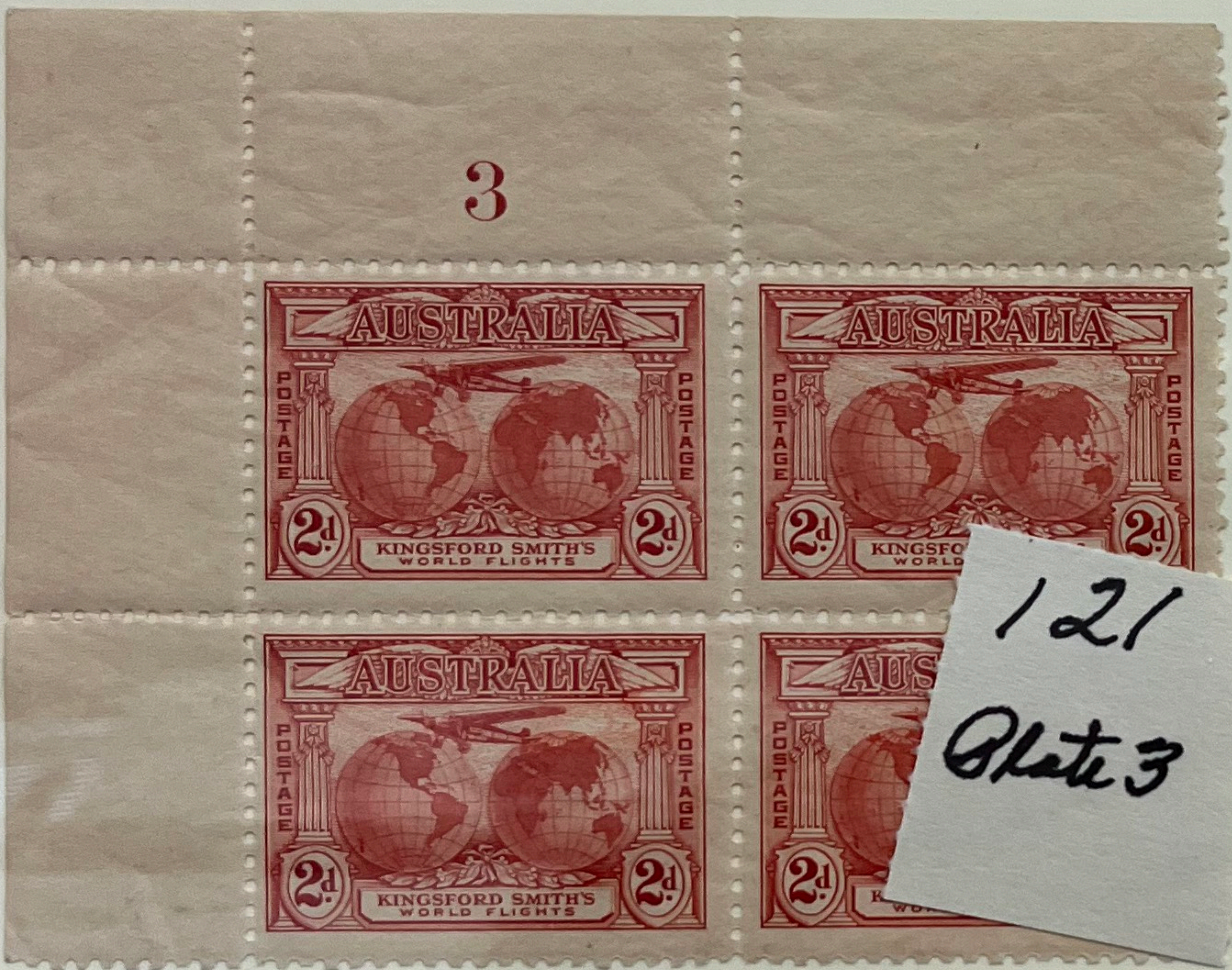
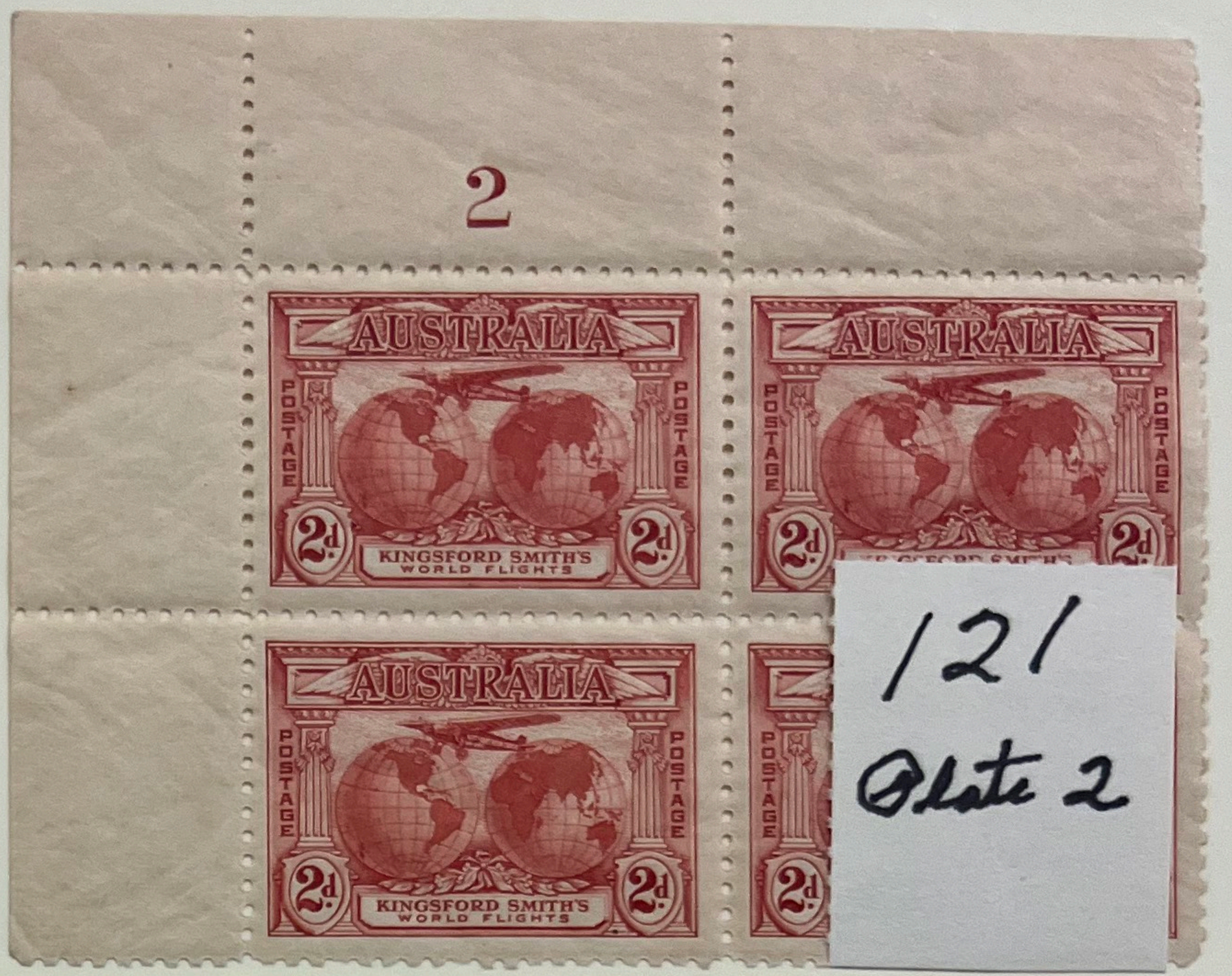




1929  
3<sup>d</sup> Air  
S9 115.  
M/MUH  
Booklet  
pane  
RARE  
A\$275 ✓

dots in no  
age shows holes  
is a BK needed









121  
Plate 7



121  
Plate 8



1



2



3





1



2



3



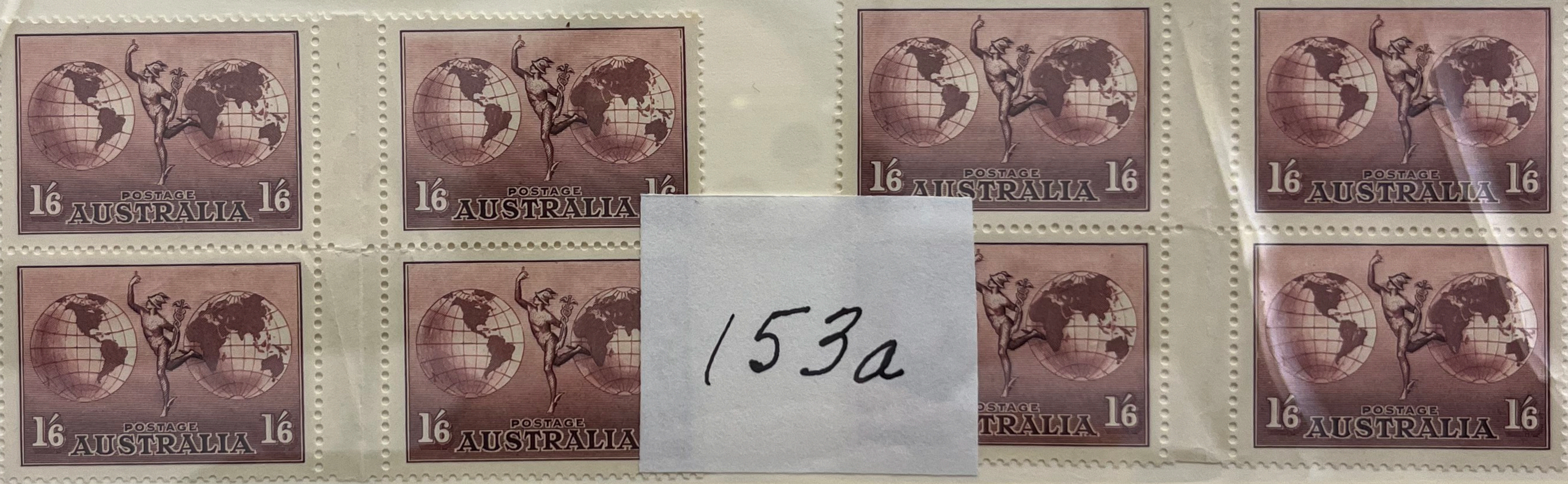
4







153a



156





970a  
\$3/



870a  
870b  
pairs(2)  
\$4



1028  
a+b  
(2)  
\$7/



1093a  
1094a  
(2)  
\$11/

Philatelic  
Products  
Make  
Great Gifts





1225a  
\$8



1216a  
\$6



1179a  
\$12



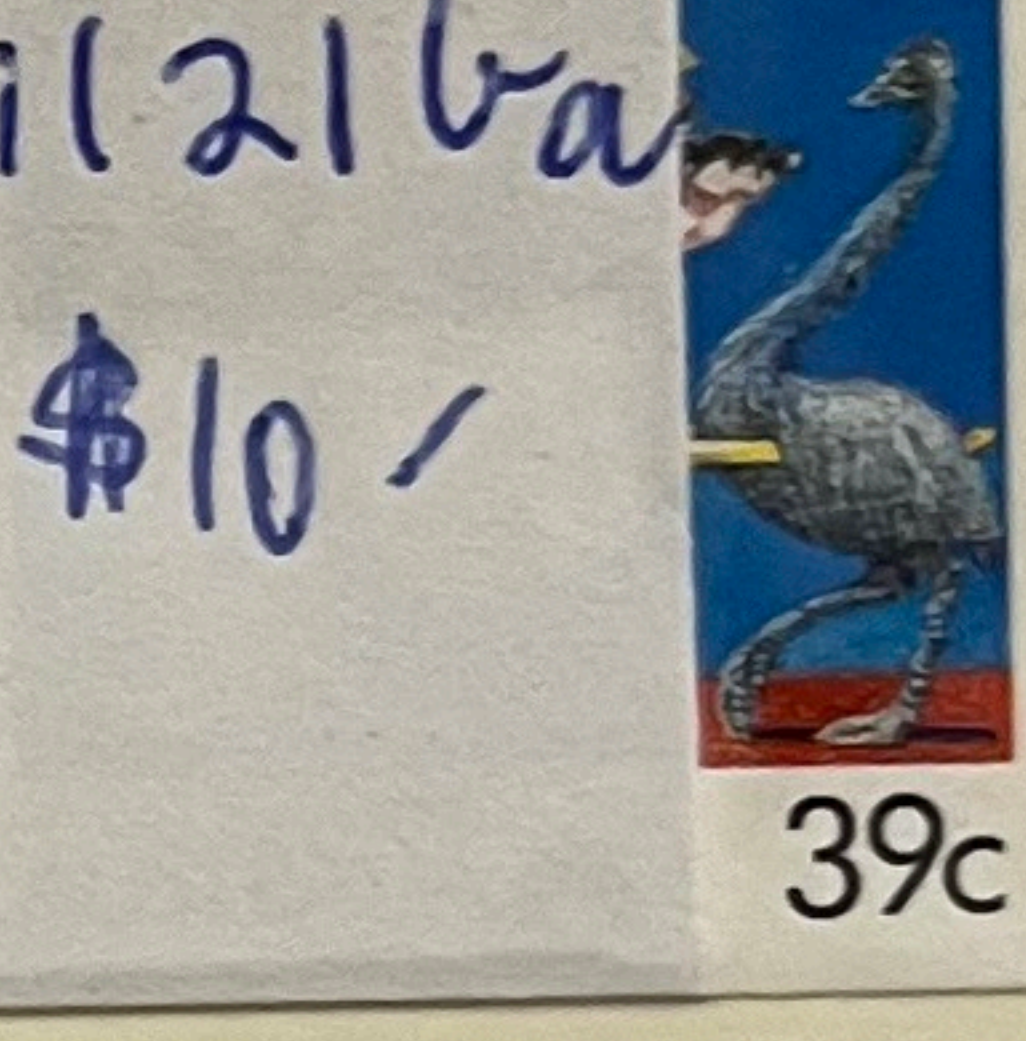
1158a  
1159a  
(2)  
\$12





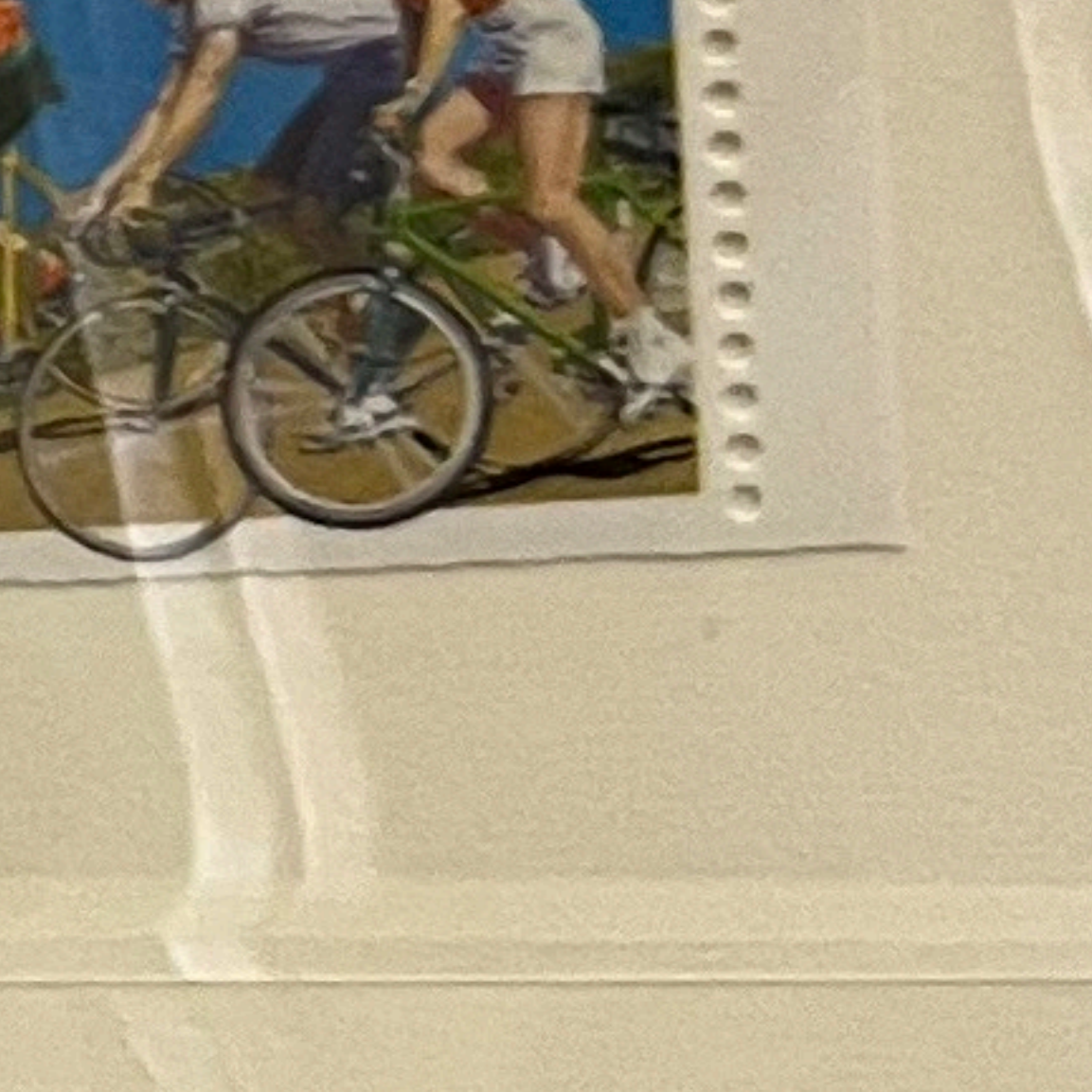
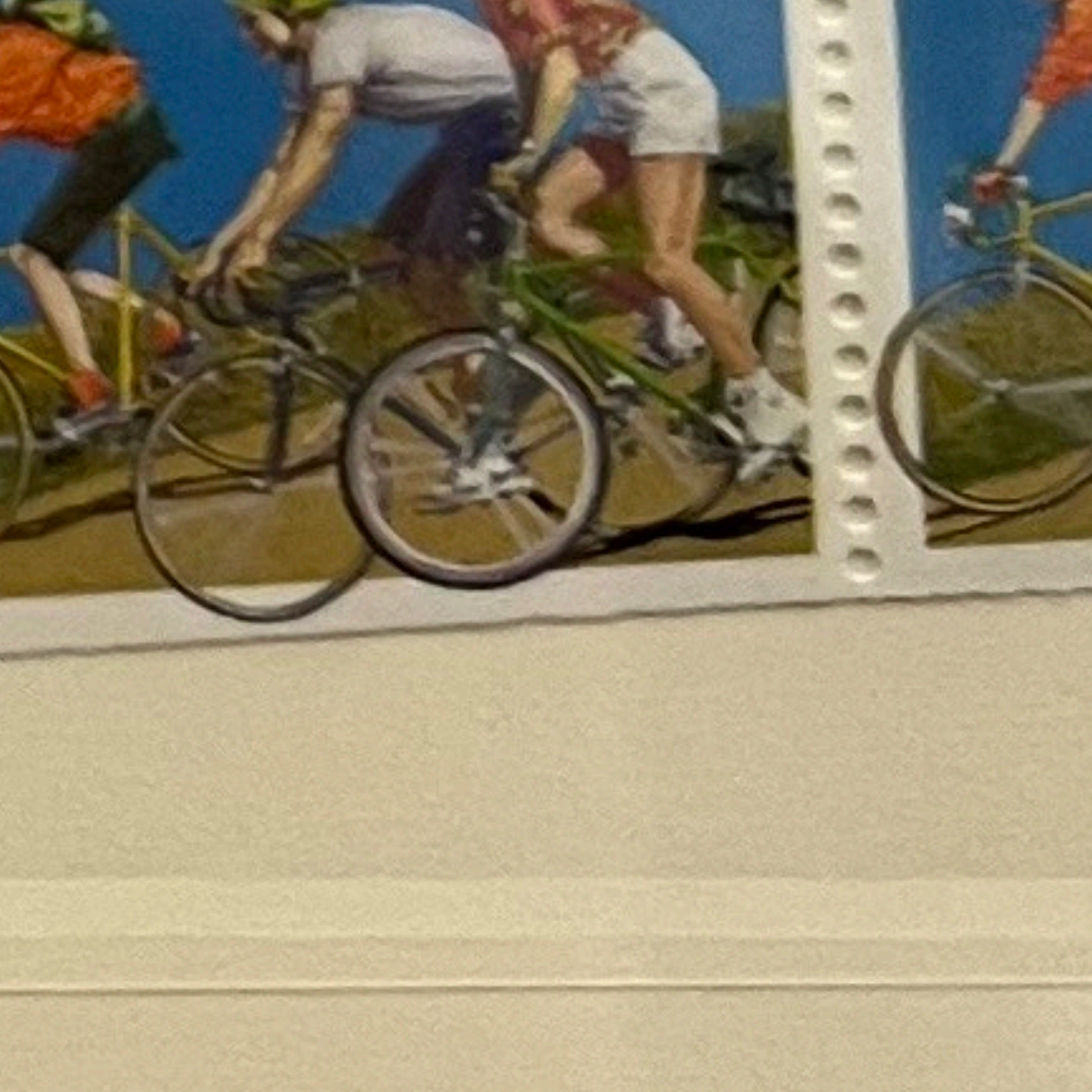
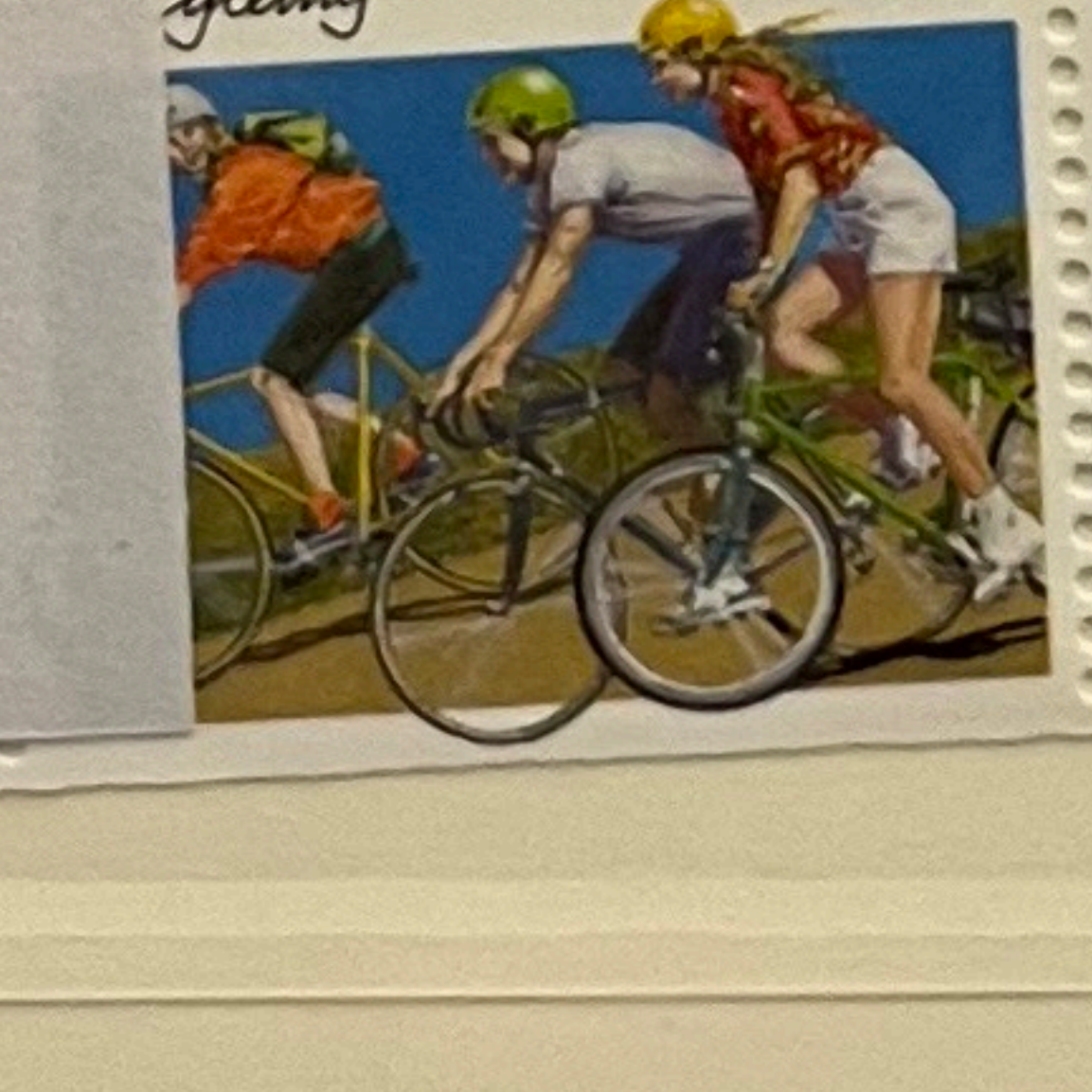
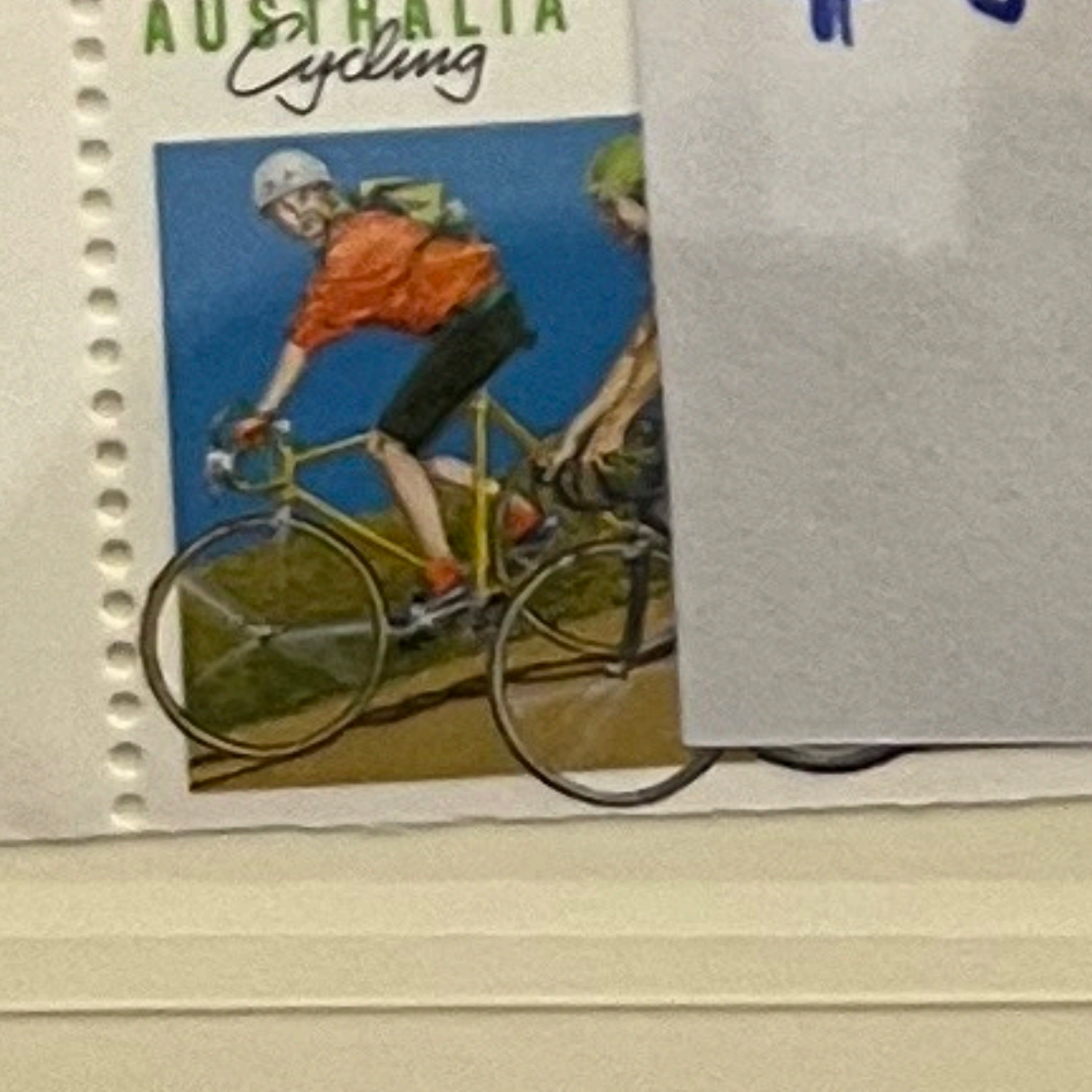
1121a  
\$10/-

M  
LEIGH MARDON

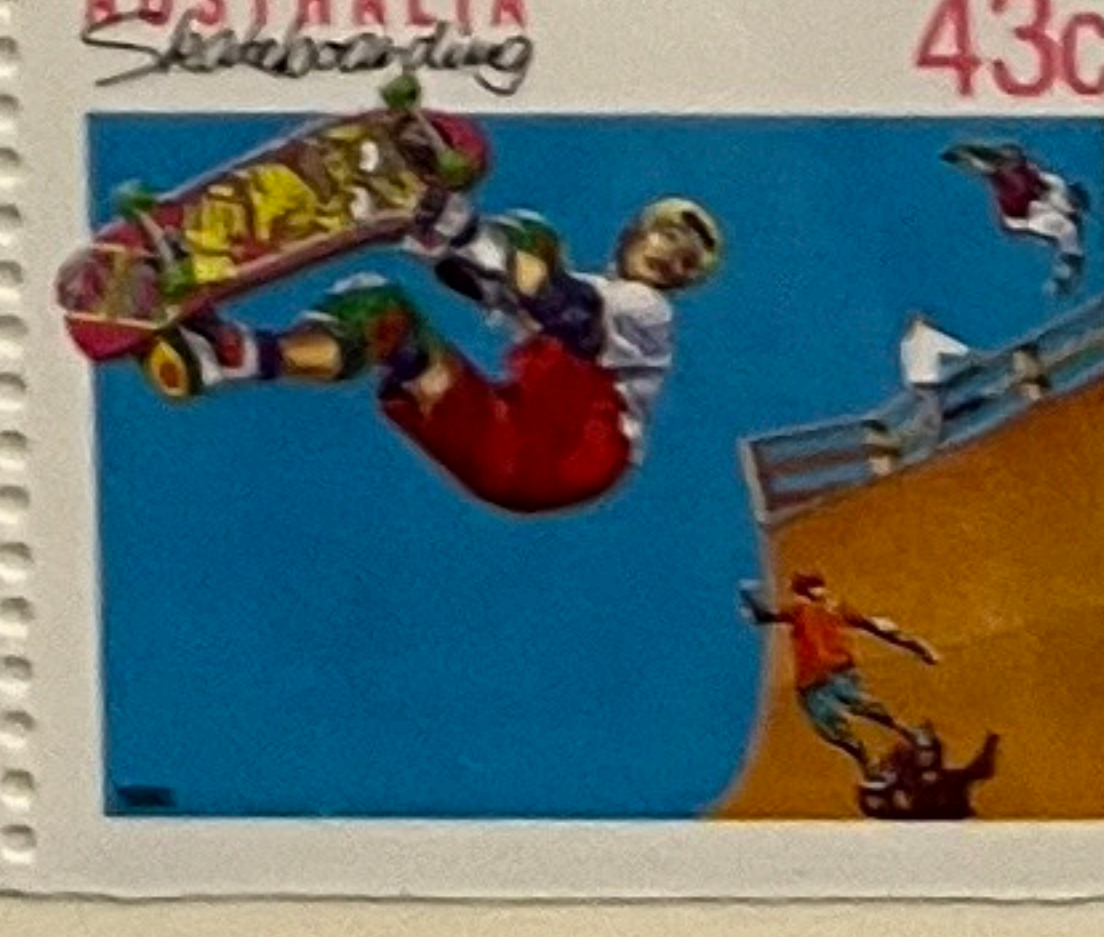
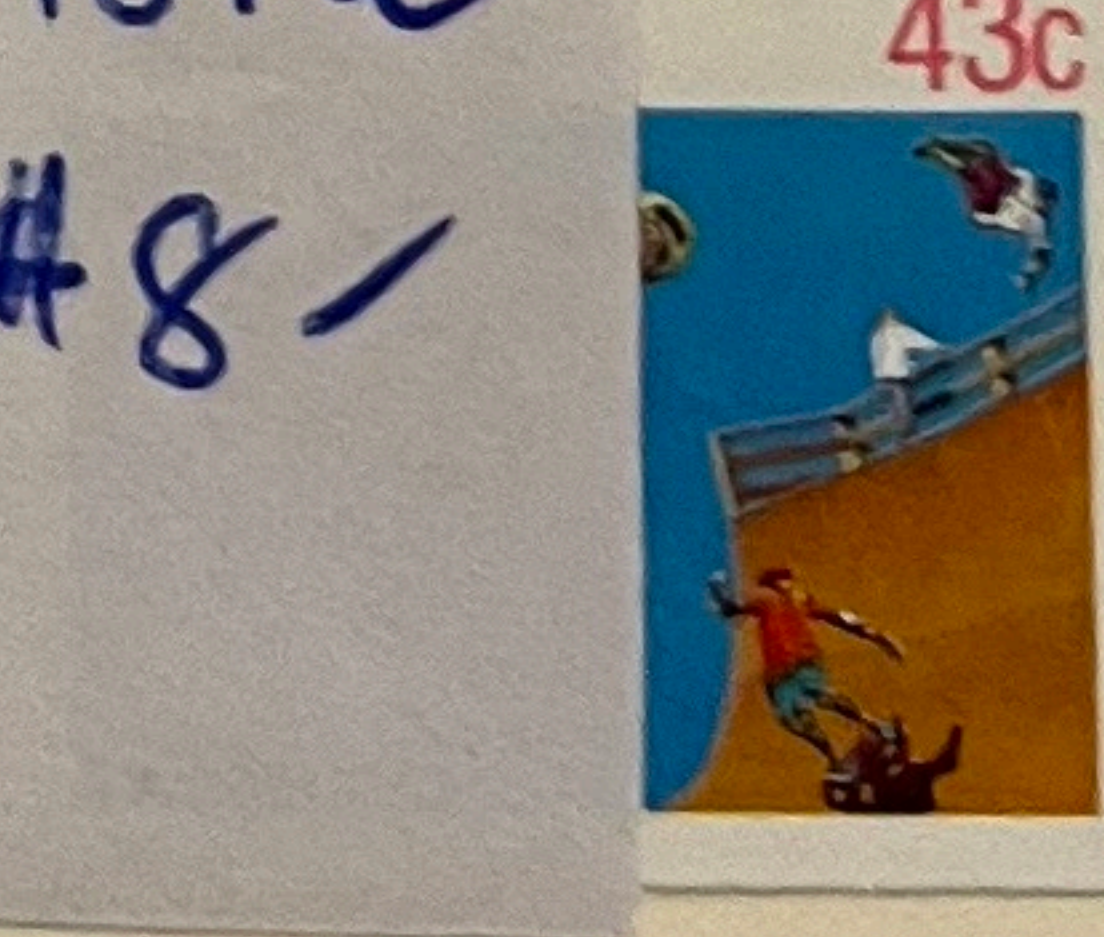


1121ba  
\$10/-

CP



1180a  
\$8



1181a  
\$8/-



Australia 43c



Thinking of You

Australia 43c



Thinking of You

Australia 43c



Australia 43c



Thinking of You

Australia 43c



Thinking of You

Australia 43c



1231a  
\$8

Australia 41c



Thinking of You

Australia 41c



Thinking of You

Australia 41c



1230a  
\$8

Australia 41c



Thinking of You

Australia 41c



Thinking of You

Australia 41c

