

LATE FEE

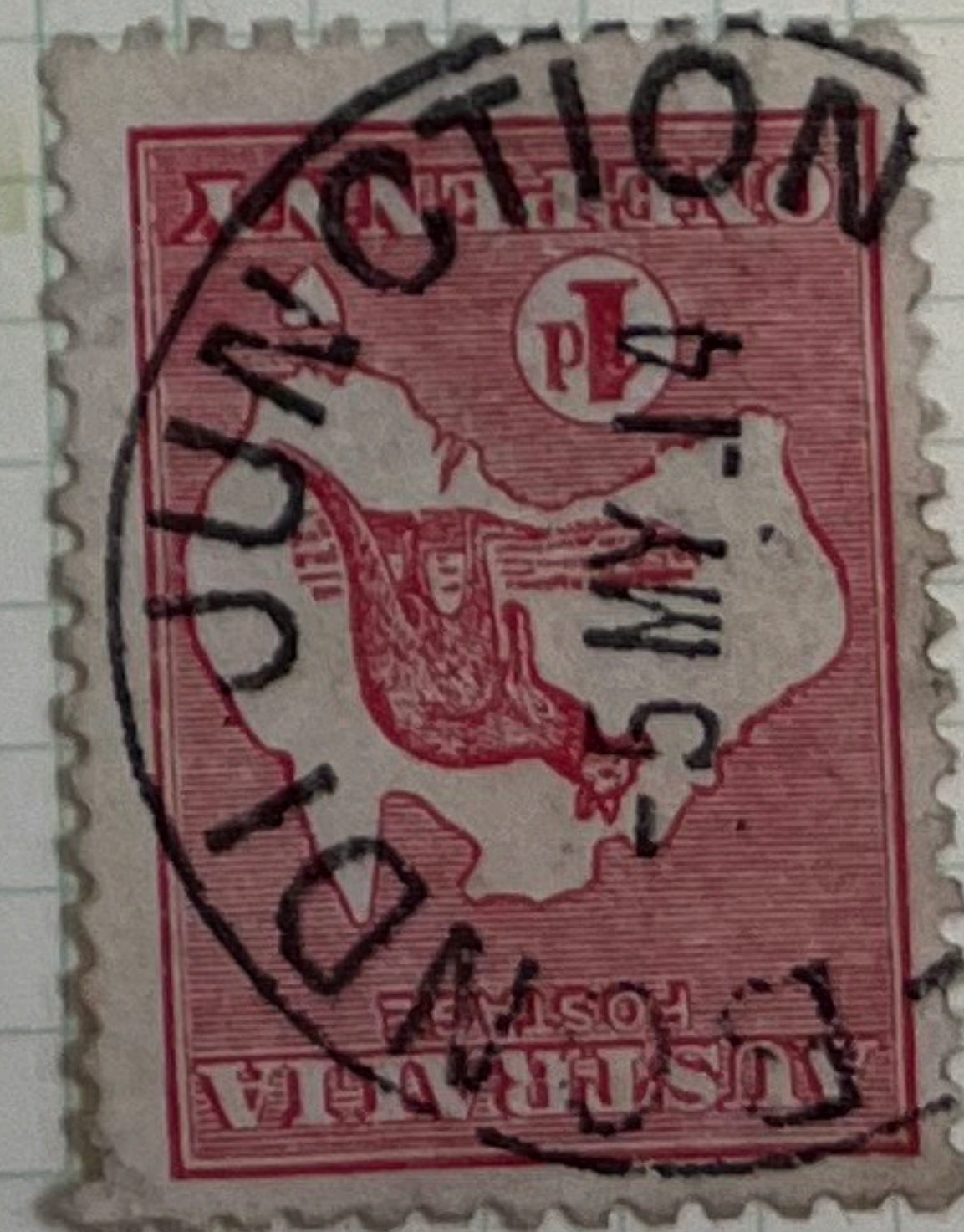
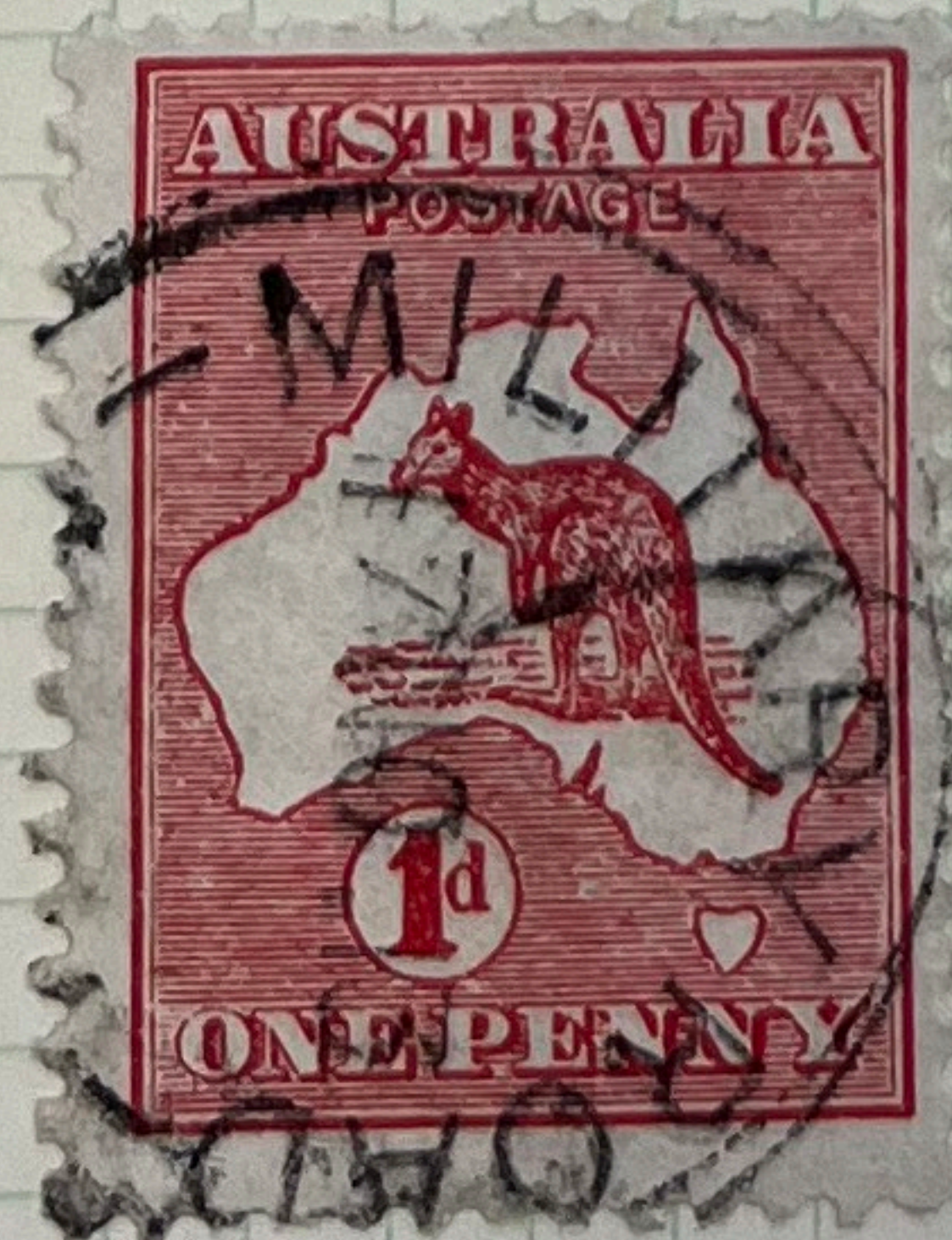
AUSTRALIA

POSTED SHIPSIDE



AUSTRALIA
Watermarked Wide Crown and Wide A
1913

Cancellations



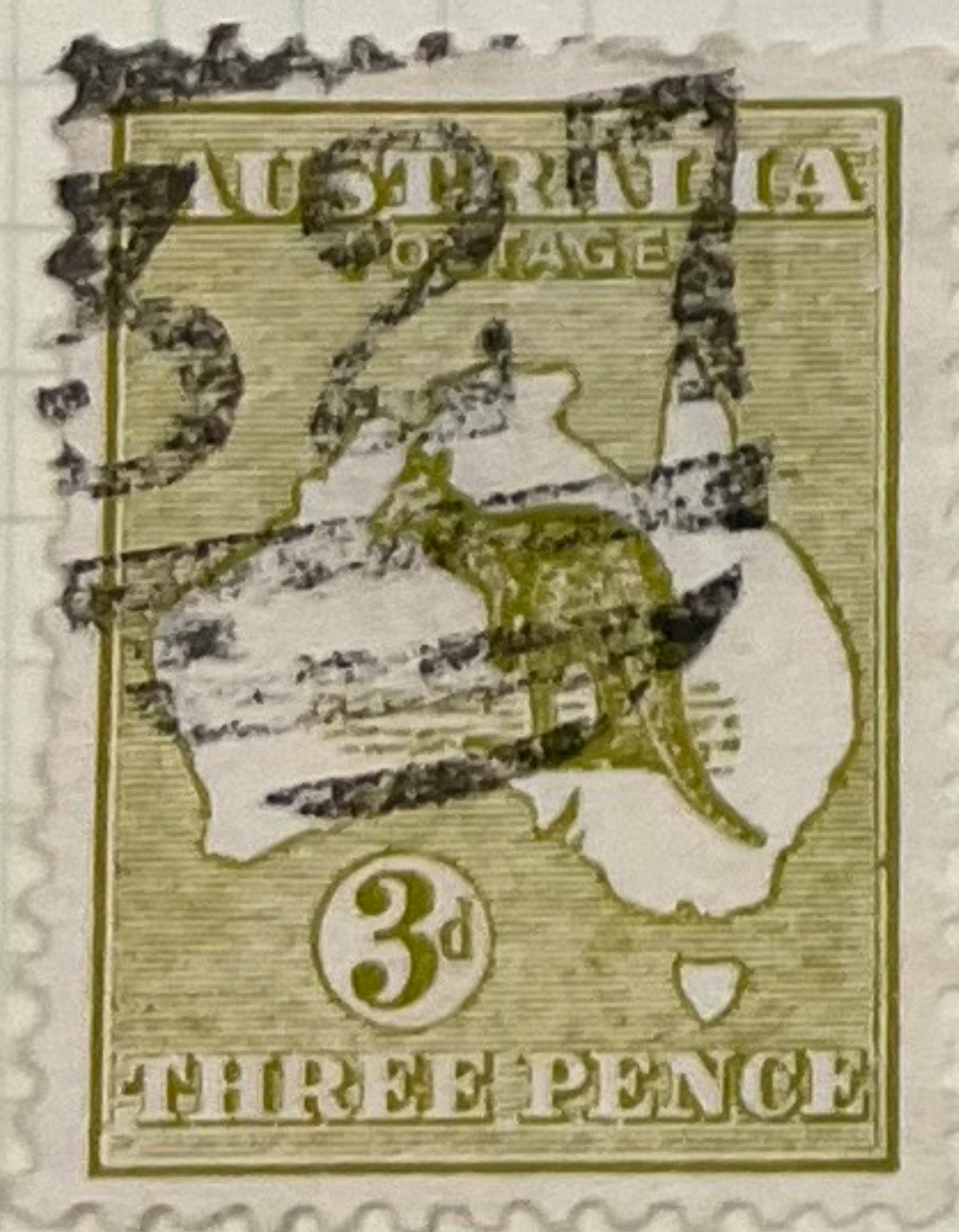
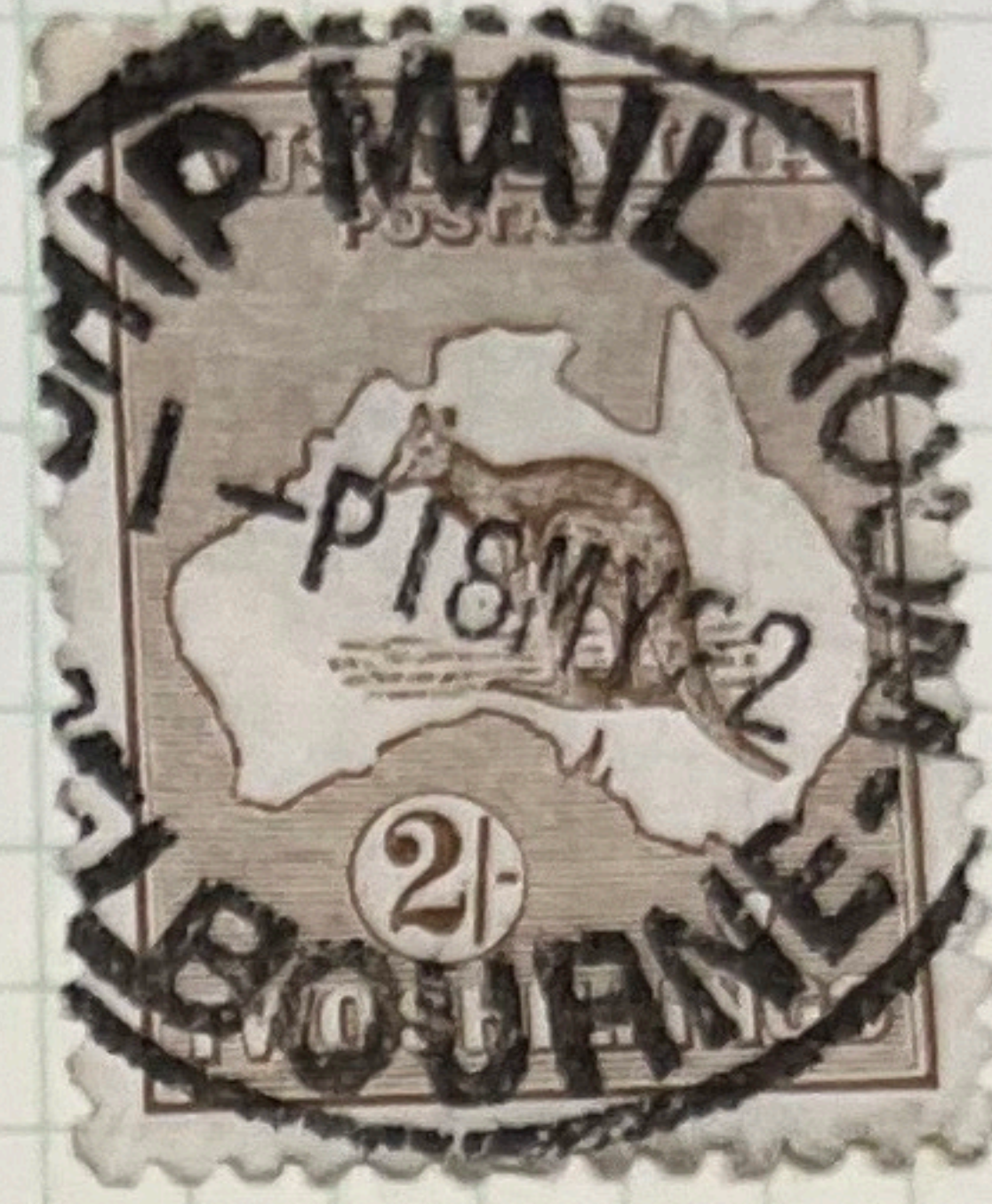
AUSTRALIA
Watermarked Wide Crown and Wide A
1913

Cancellations

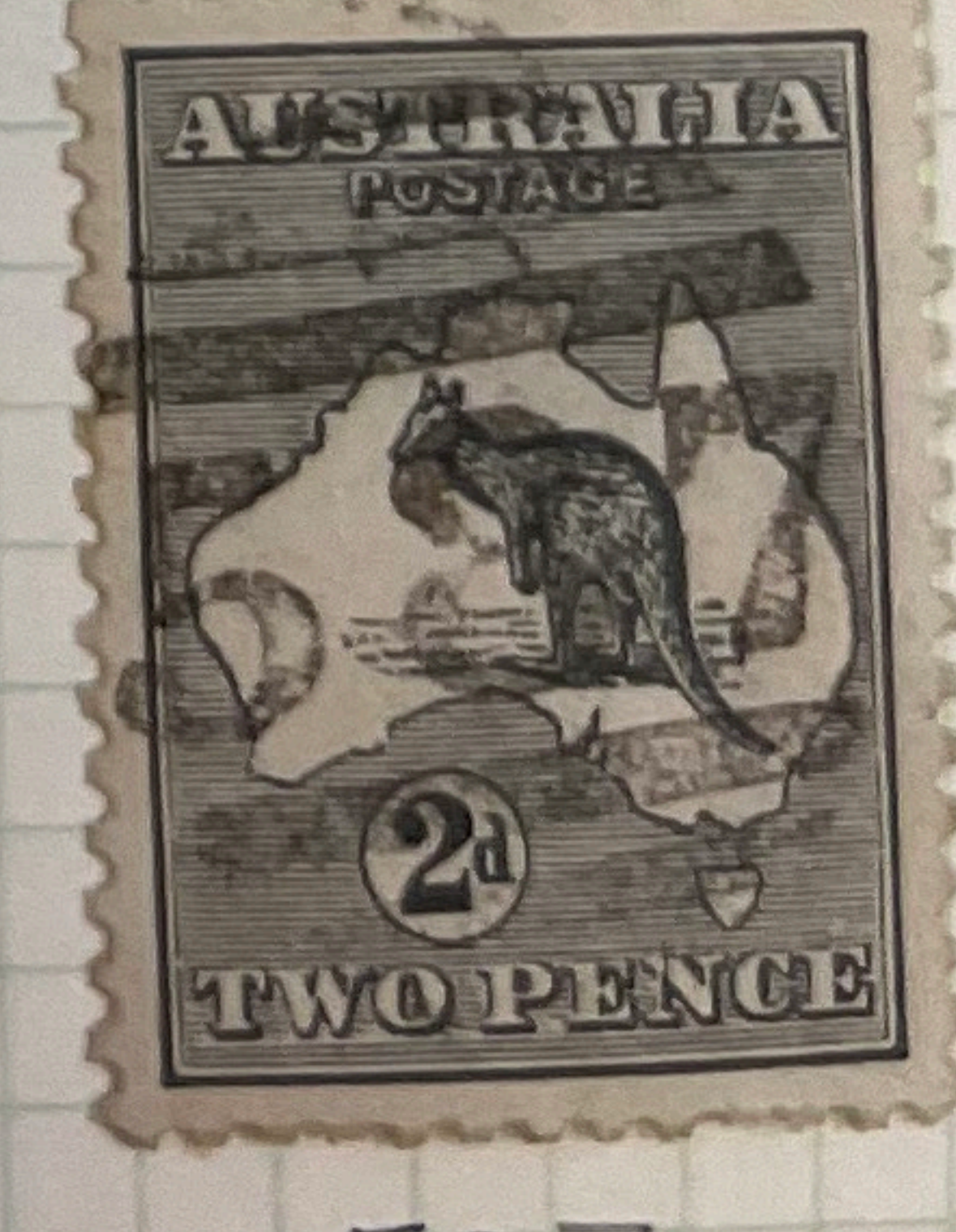
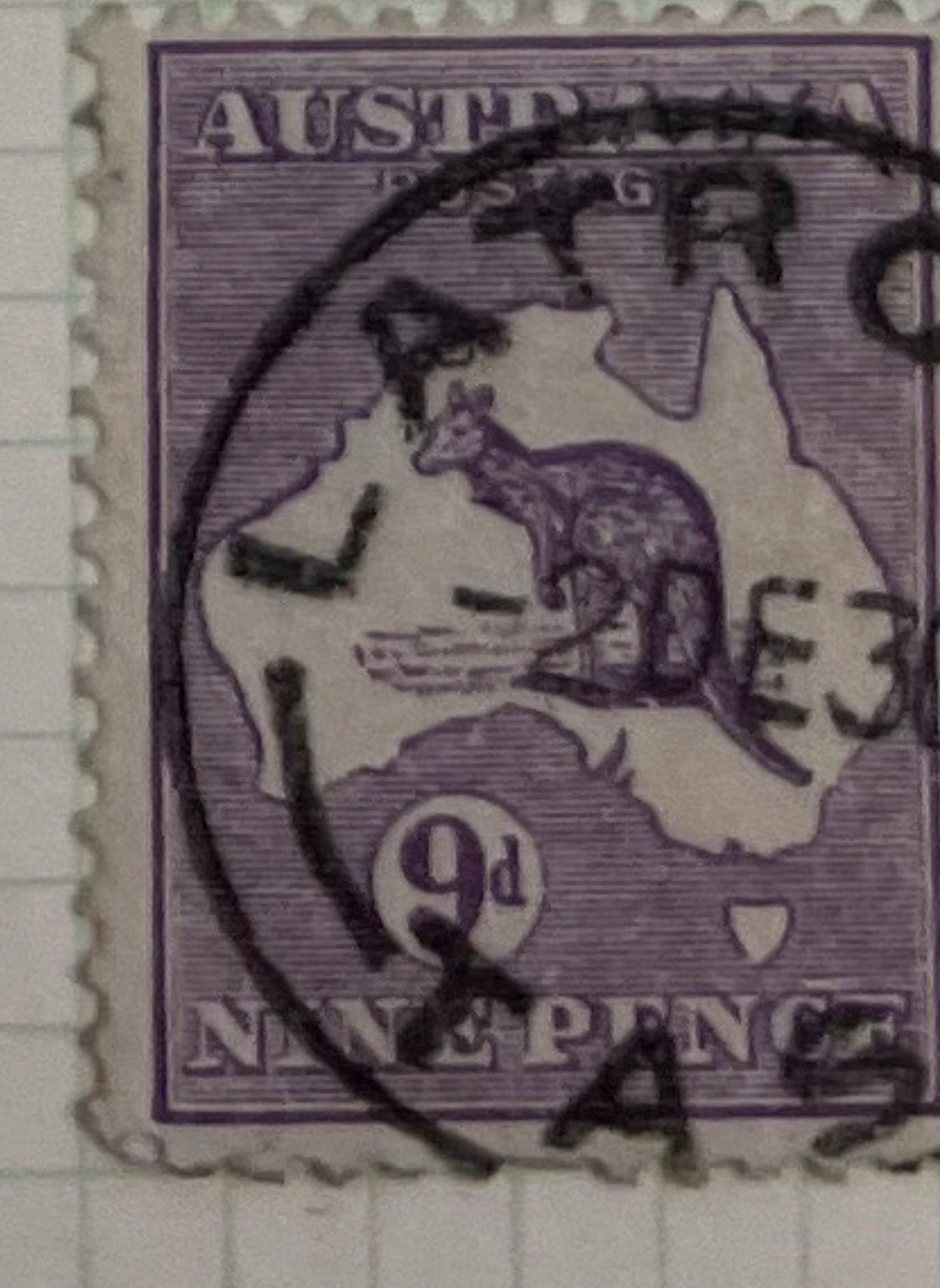
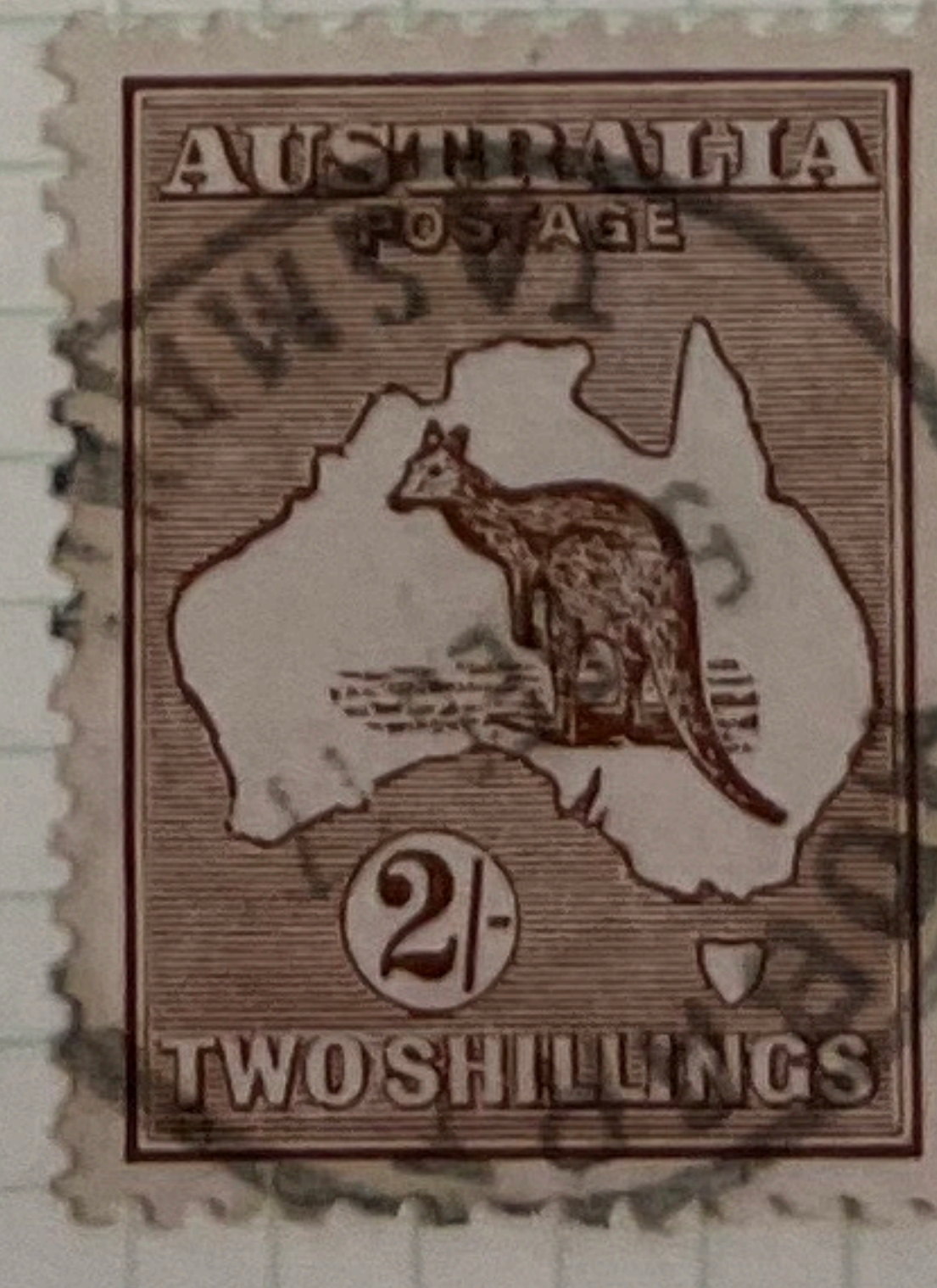
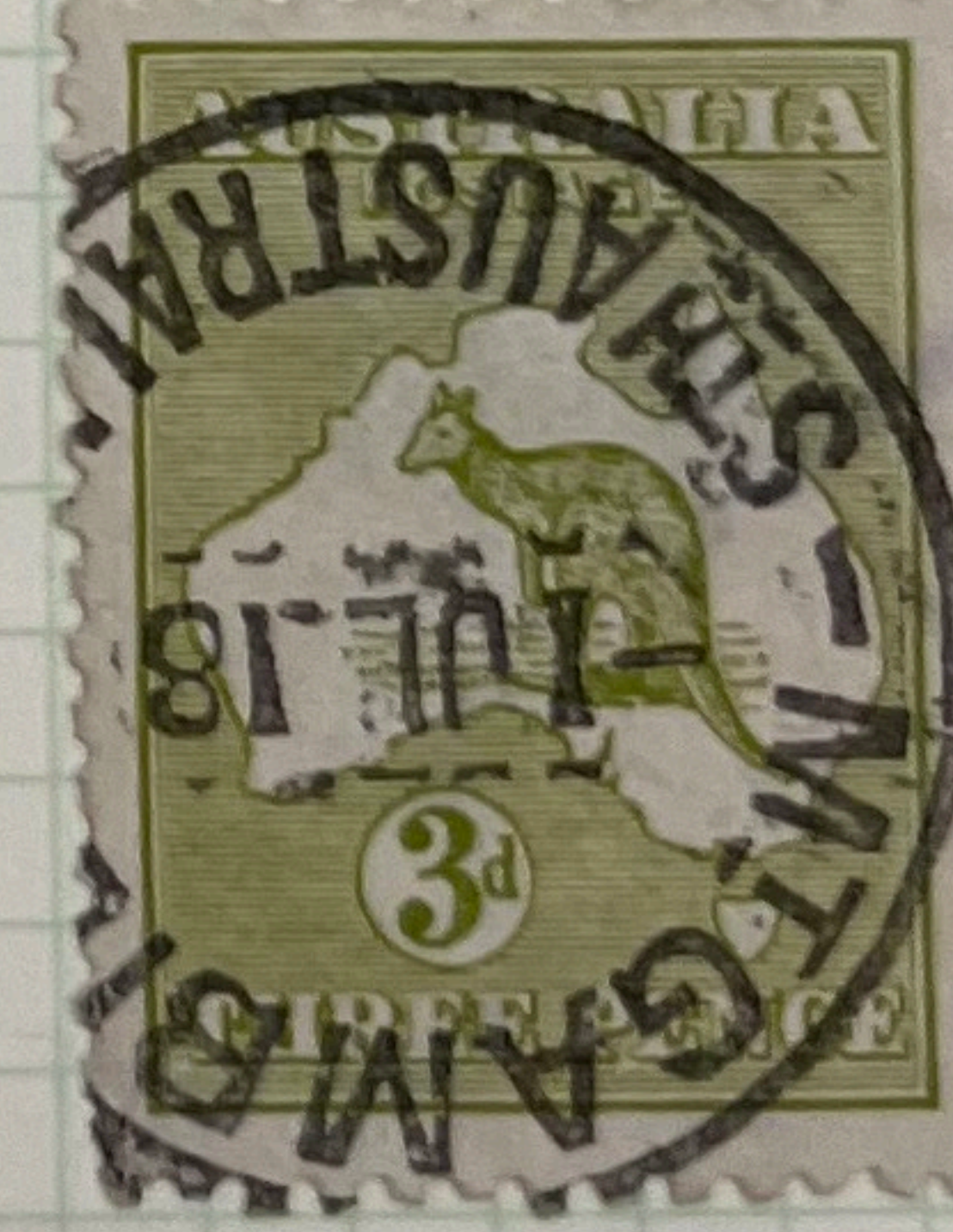


AUSTRALIA
Watermarked Narrow Crown and Narrow A
1915 - 24

Cancellations



327



537

AUSTRALIA
Watermarked Wide Crown and Narrow A
1914 - 23

Cancellations



AUSTRALIA
Watermarked Wide Crown and Narrow A
1914 - 23

Cancellations



216, DIE 13



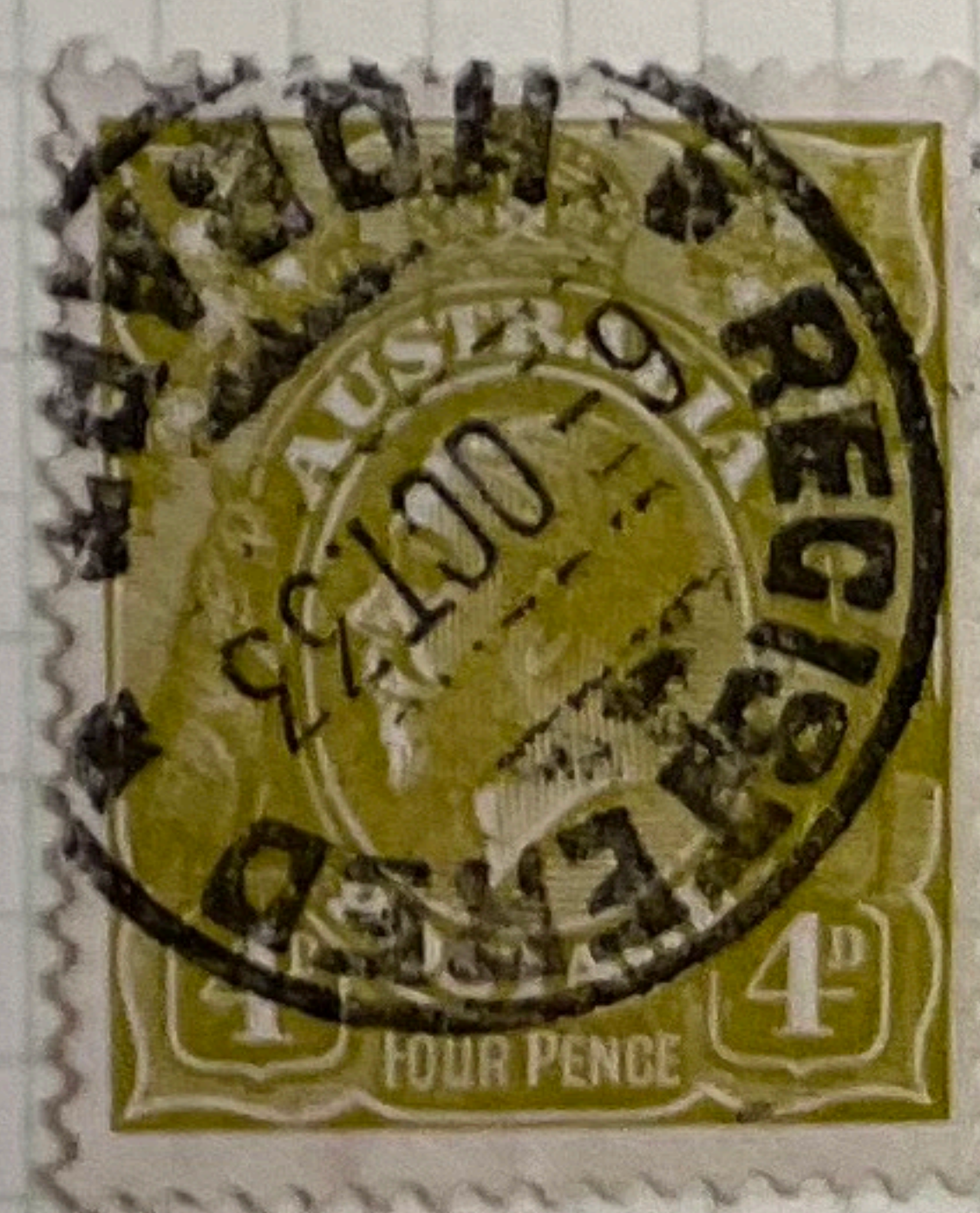
AUSTRALIA
Watermarked Wide Crown and Narrow A
1914 - 23

Cancellations



AUSTRALIA
Watermarked Small Crown and A Multiple
1926 - 30

Cancellations



AUSTRALIA
Watermarked Small Crown and A Multiple
1926 - 30

Cancellations



OS



AUSTRALIA
Watermarked Small Crown and A Multiple
1926 - 30

San Francisco Ferry Cancel



The Ferry Post Office Annex was located on the Embarcadero in San Francisco across from the famous Ferry Building. Outward bound mail was gathered from all parts of the city for further processing at that office. It was then sent by ferry boats across the bay to waiting trains, or mail destined for Pacific ports was delivered to ships close by. All post offices cancelled their own mail before sending it to the Ferry Annex, but the Ferry postmark was used to cancel letters and packages mailed directly at the Annex. Mostly this postmark is found on U. S. stamps, but occasionally it is seen on foreign stamps where it may be assumed to be functioning as a receiving or arrival cancel.

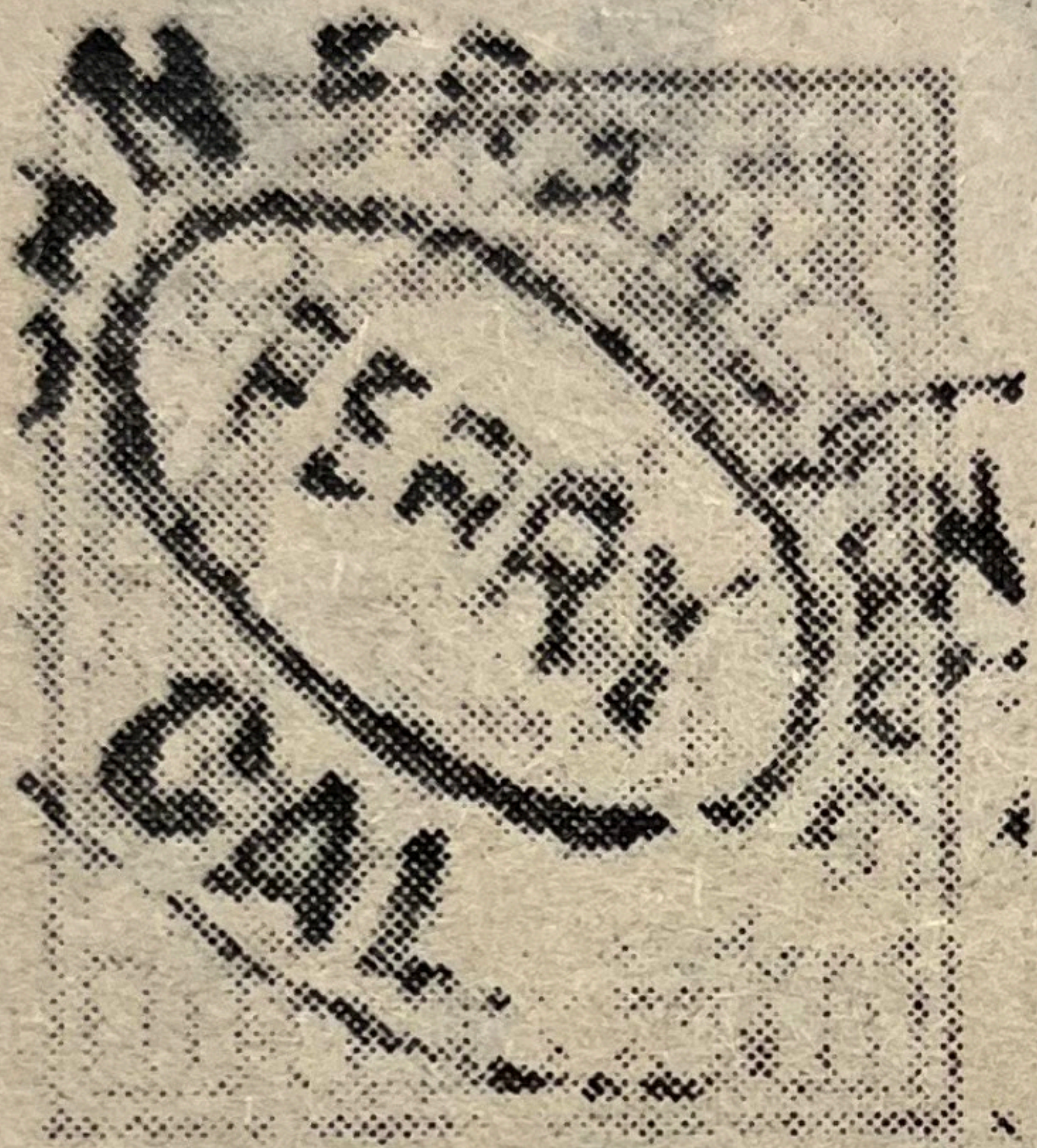
Francisco Ferry Cancel



See: Appendix used to

San Francisco ferry cancel

Q. Would you please explain the significance of the "ferry" cancel from San Francisco? (J.A.R., Mountainhome, Pa.)



A. The word "Ferry" inside the San Francisco, Calif. cancel indicates the location of that particular post office. The Ferry Annex was located on the Embarcadero in San Francisco.

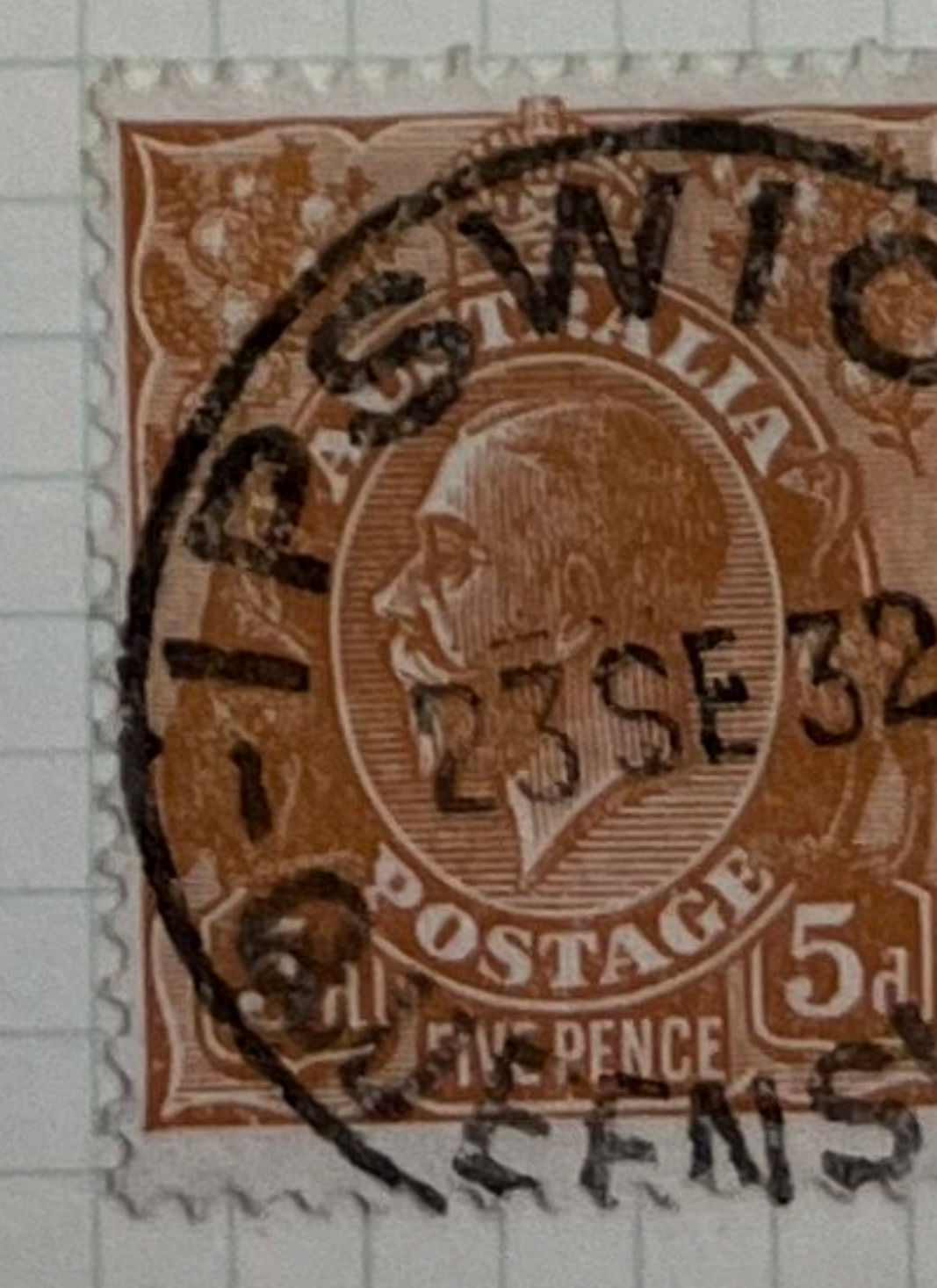
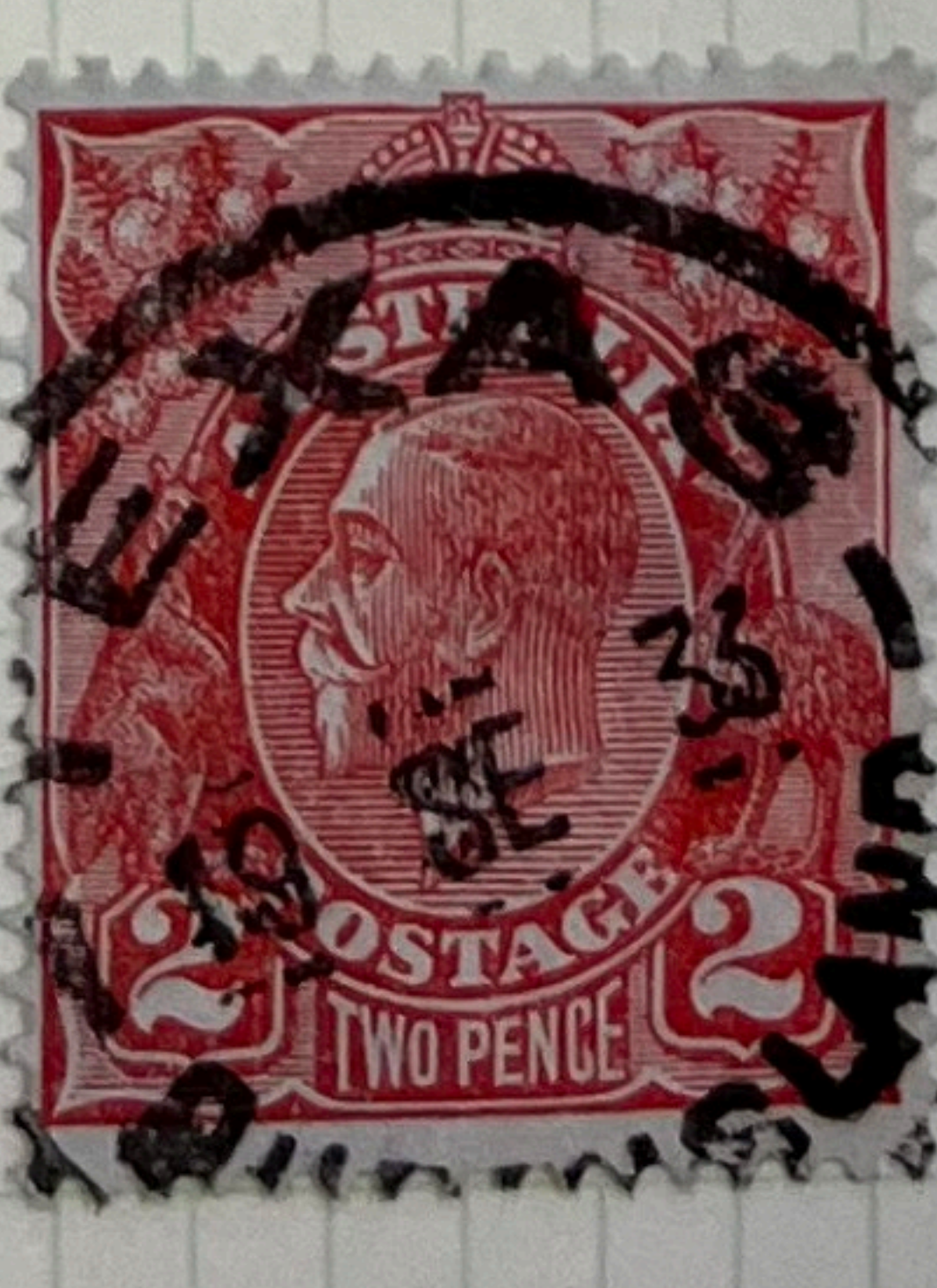
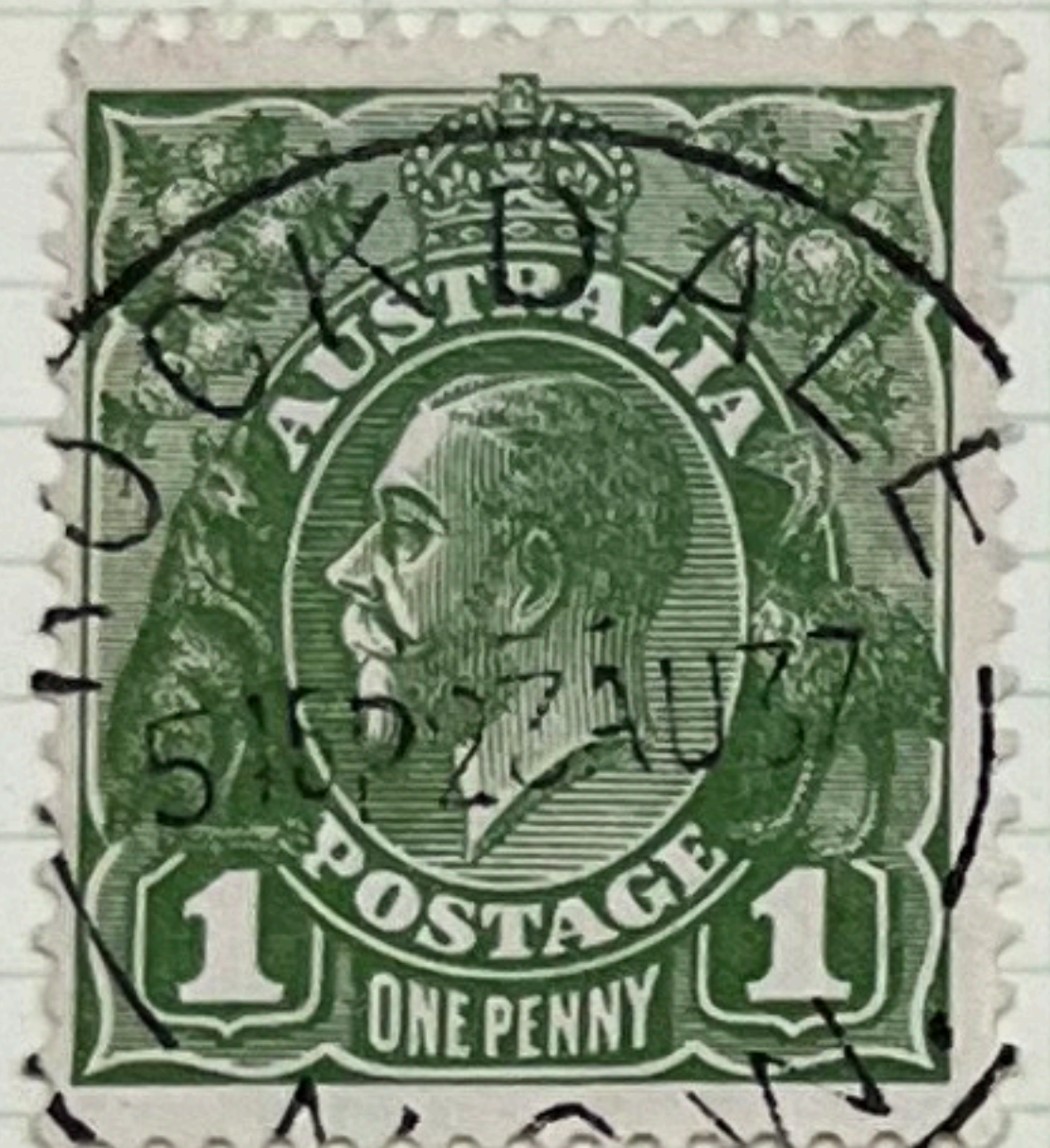
It was strategically located across the street from the famous Ferry Building. Mail was gathered from all parts of the city and worked at that post office. It was then sent on ferry boats going across the bay to waiting trains. Mail going across the Pacific was taken on ships close by.

The present Rincon Annex post office, located about two blocks from the old Ferry Post Office, was built in the 1930s and replaced it.

The copy of the postmark that you sent was used to cancel letters and packages mailed at that office. In those days all offices canceled their own mail, then sent it to the Ferry Annex for distribution as mentioned above. (Don McPherson).

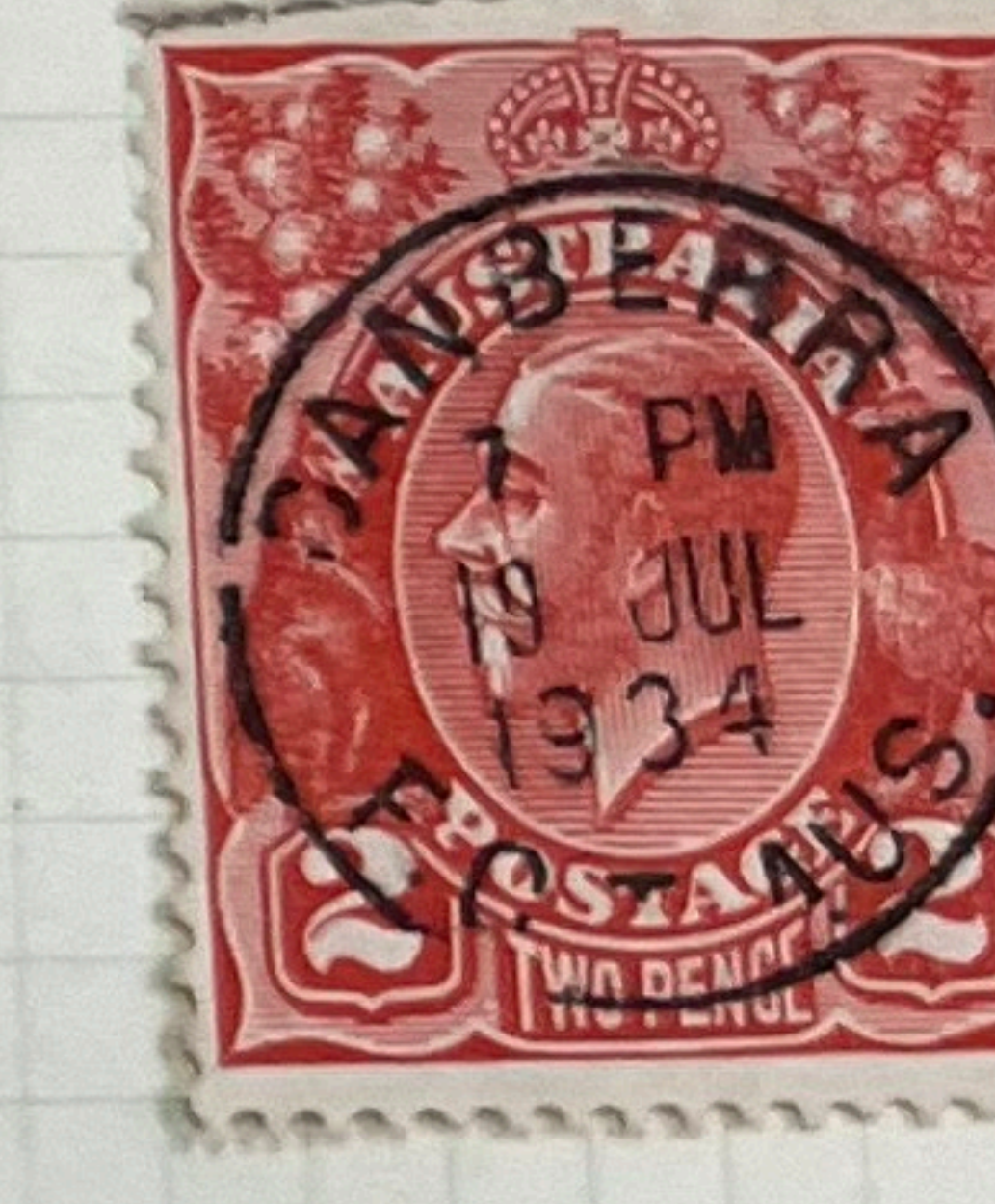
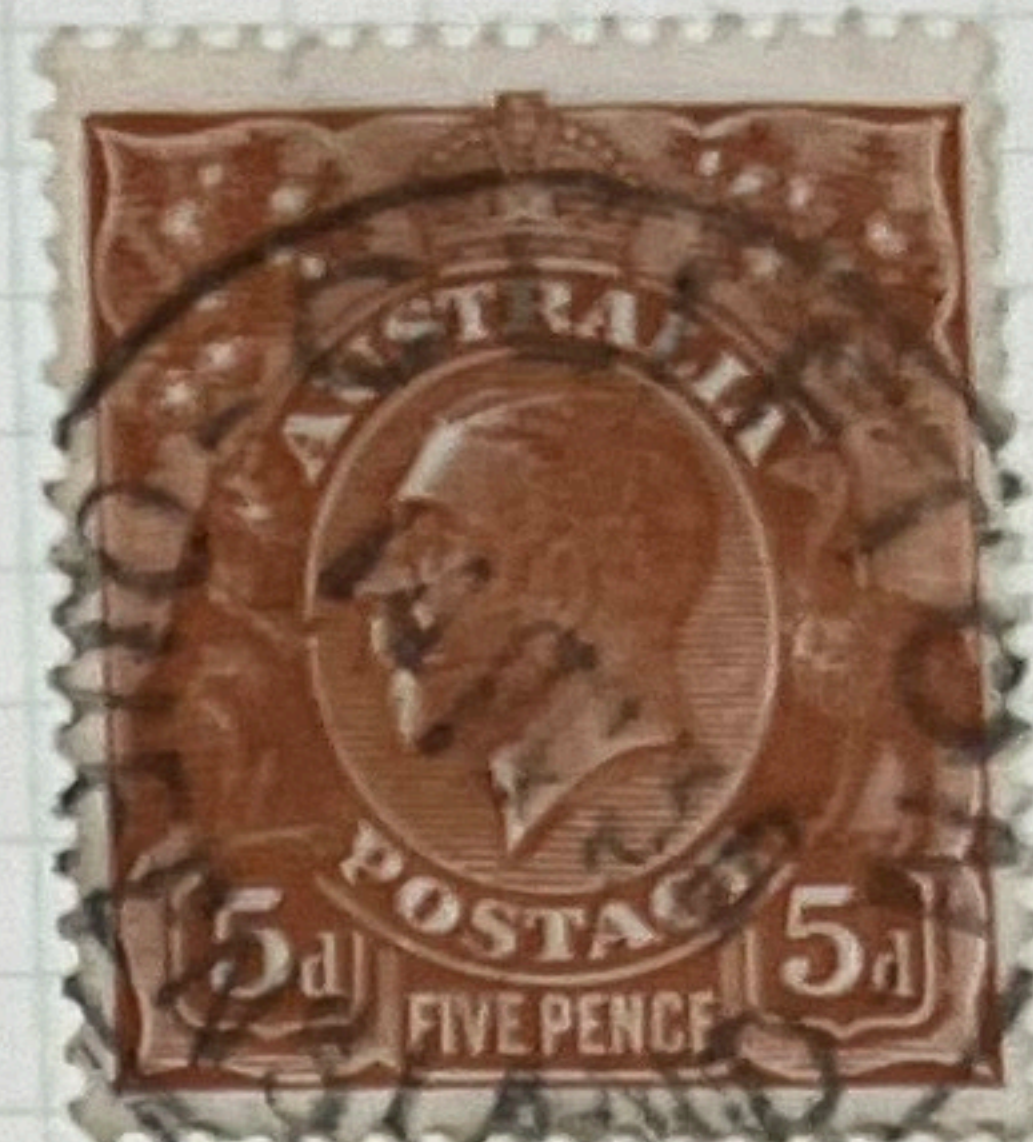
AUSTRALIA
Watermarked Small Crown and C of A Multiple
1931 - 36

Cancellations

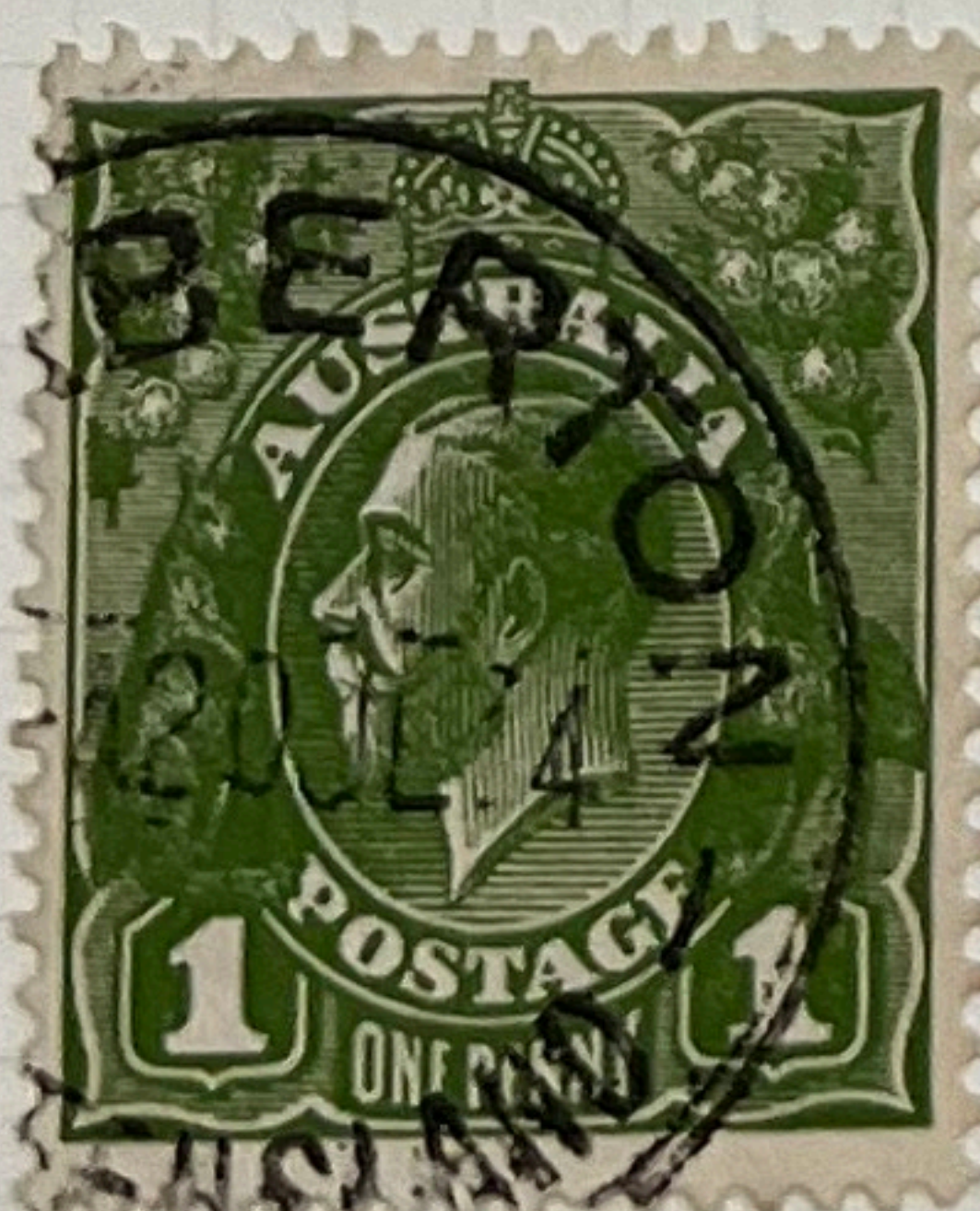


AUSTRALIA
Watermarked Small Crown and C of A Multiple
1931 - 36

Cancellations



INV WMK



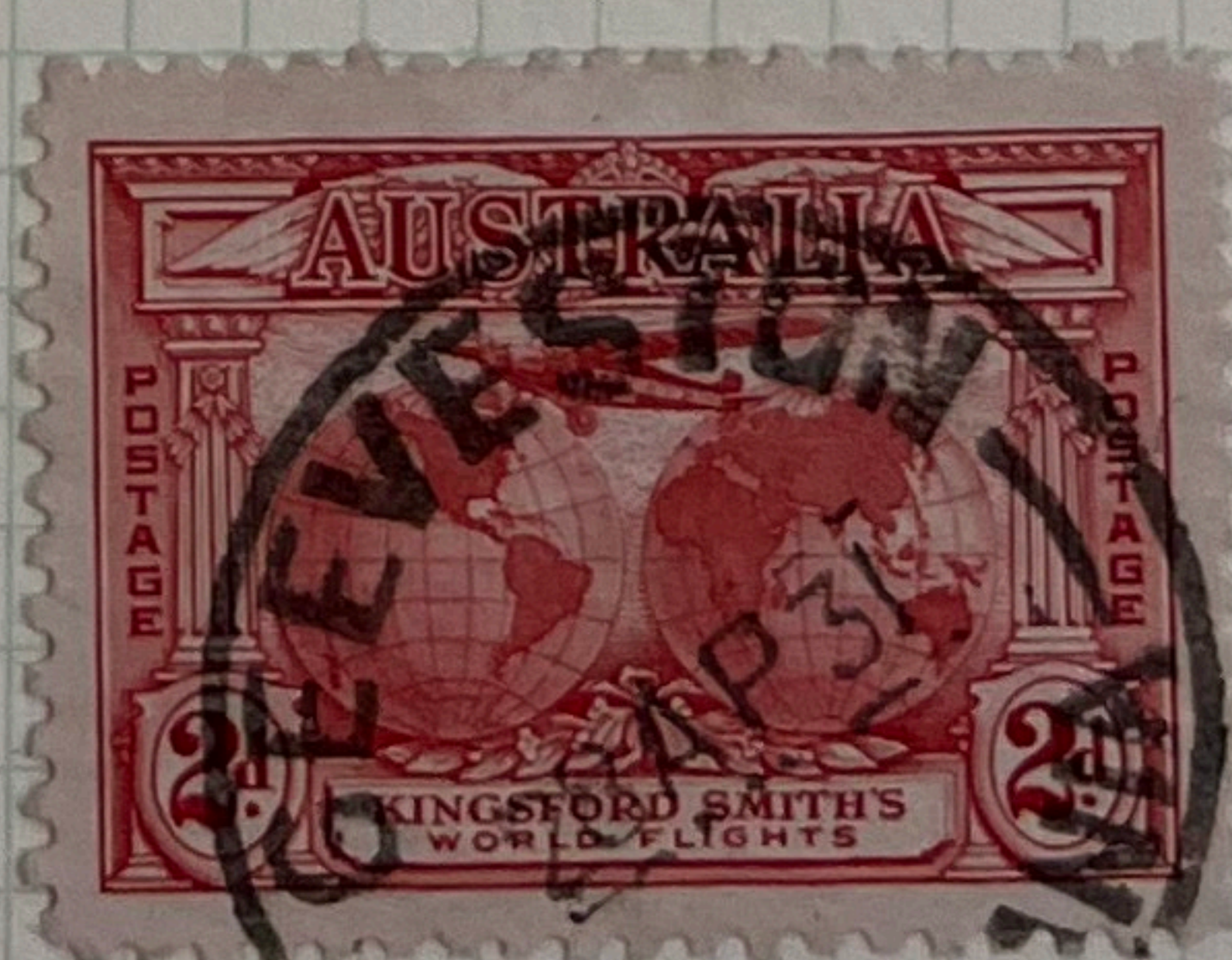
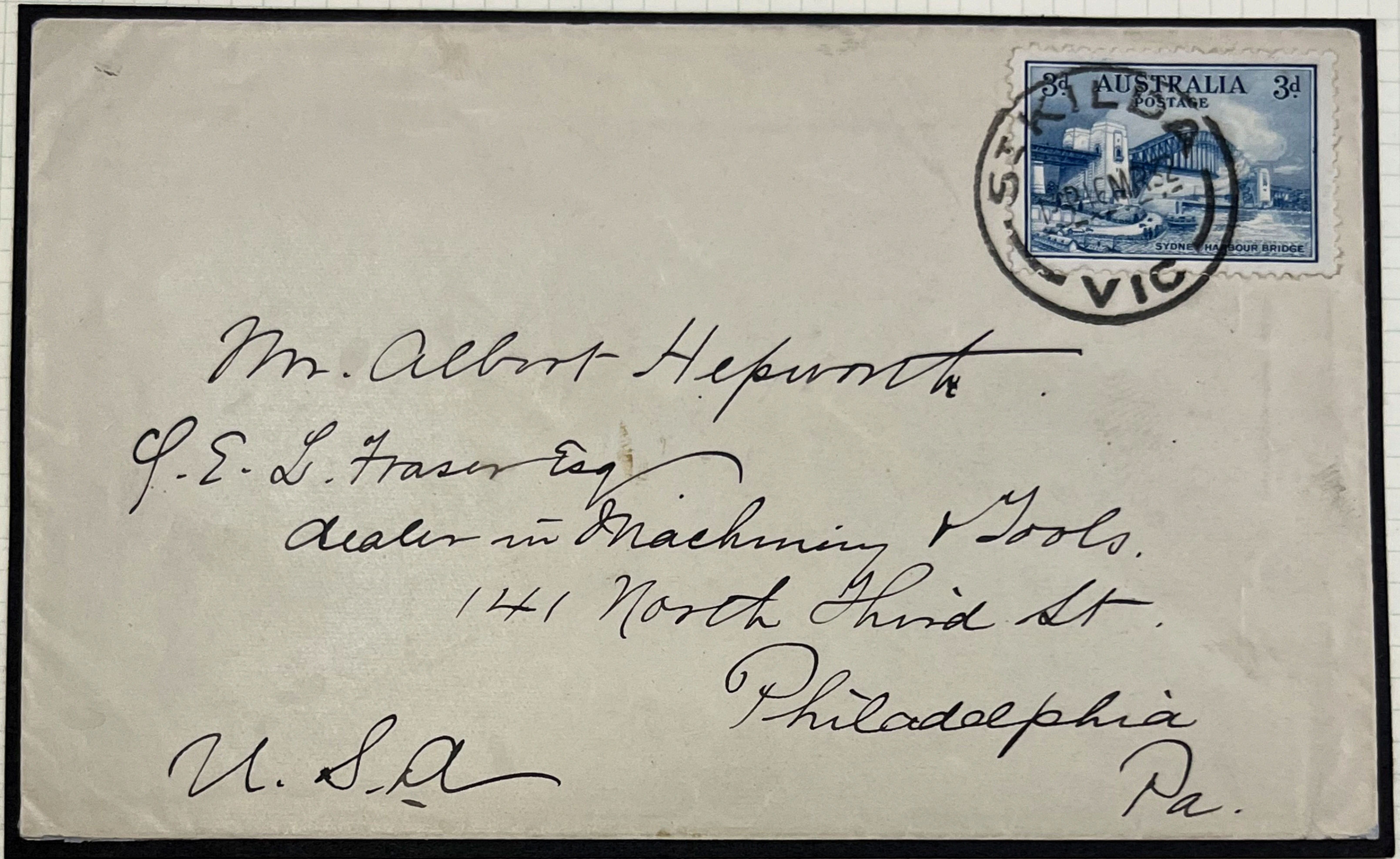
AUSTRALIA
Watermarked Small Crown and C of A Multiple
1931 - 36

Cancellations



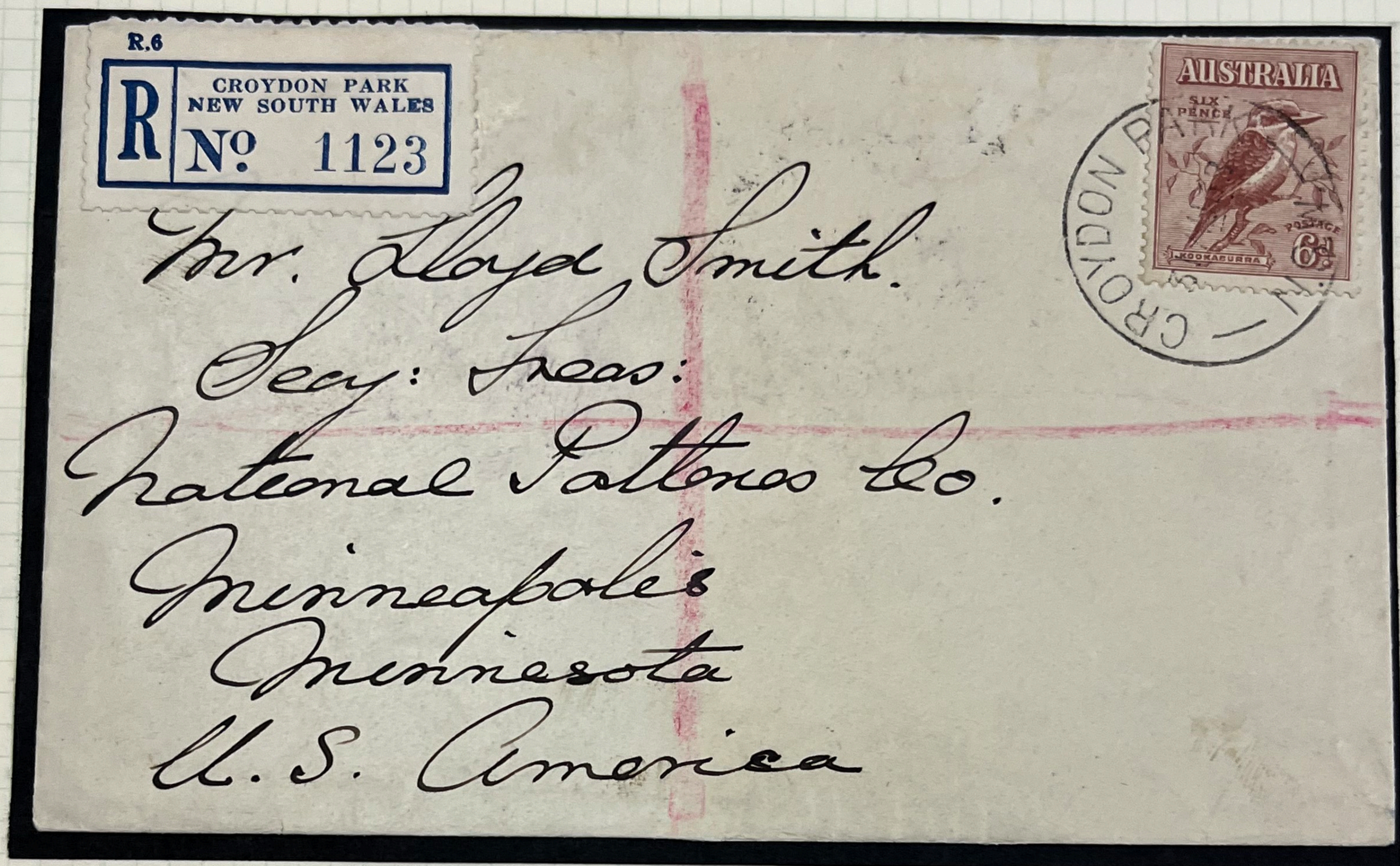
AUSTRALIA
Unwatermarked
Issues of 1931 and 1932

Cancellations



AUSTRALIA
Unwatermarked
and
Watermarked Small Crown and C of A Multiple
Issues of 1932 to 1935

Cancellations



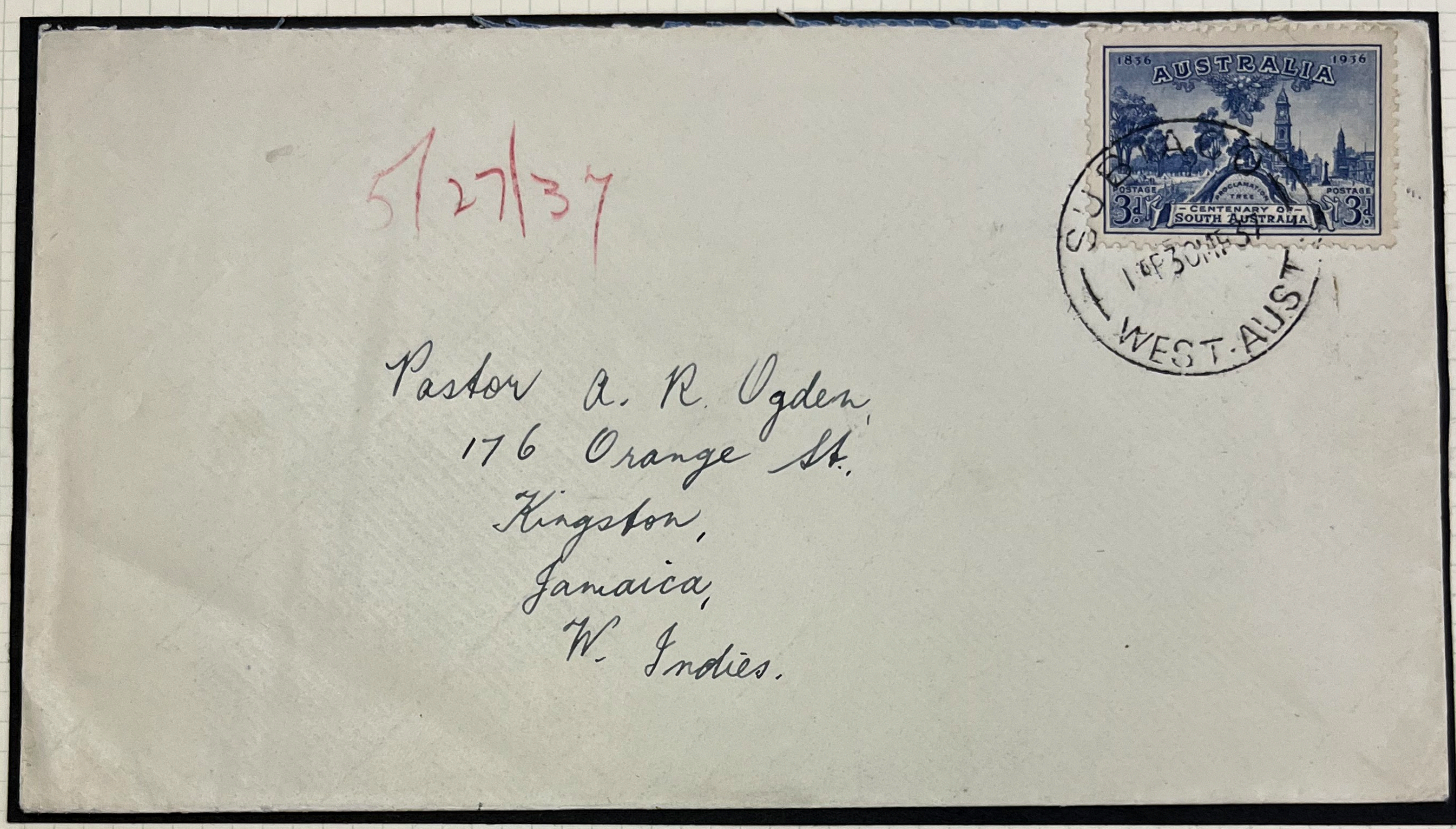
AUSTRALIA
Watermarked Small Crown and C of A Multiple
Issues of 1932 to 1935

Cancellations



AUSTRALIA
Watermarked Small Crown and C of A Multiple
Issues of 1936

Cancellations



AUSTRALIA
Watermarked Small Crown and C of A Multiple
Issues of 1936 and 1937

Cancellations

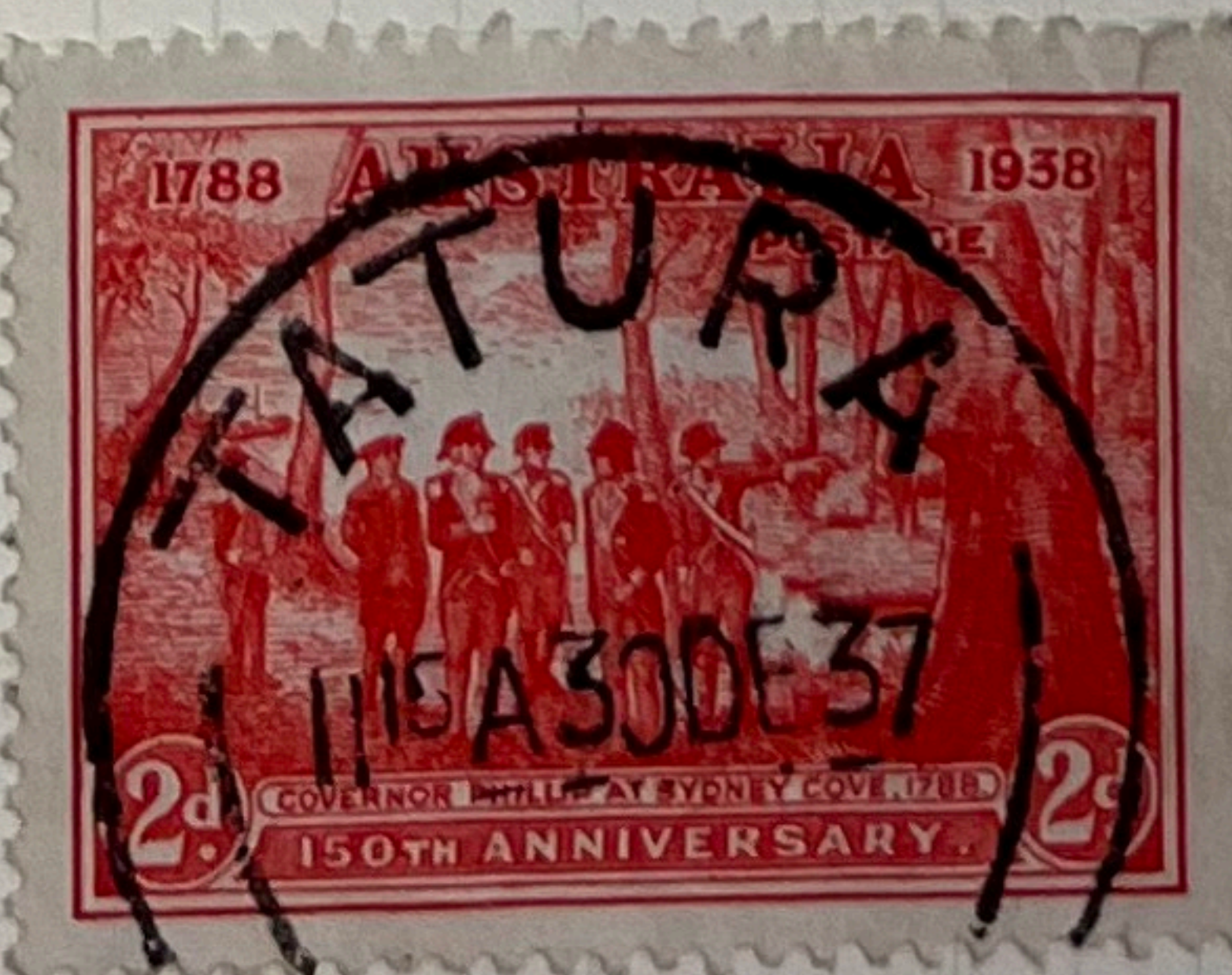


AUSTRALIA
Watermarked Small Crown and C of A Multiple
Issues of 1936 and 1937
Cancellations



AUSTRALIA
Watermarked Small Crown and C of A Multiple
Issues of 1936 and 1937

Cancellations



AUSTRALIA
Watermarked Small Crown and C of A Multiple
1931 - 36

Cancellations





AUSTRALIA

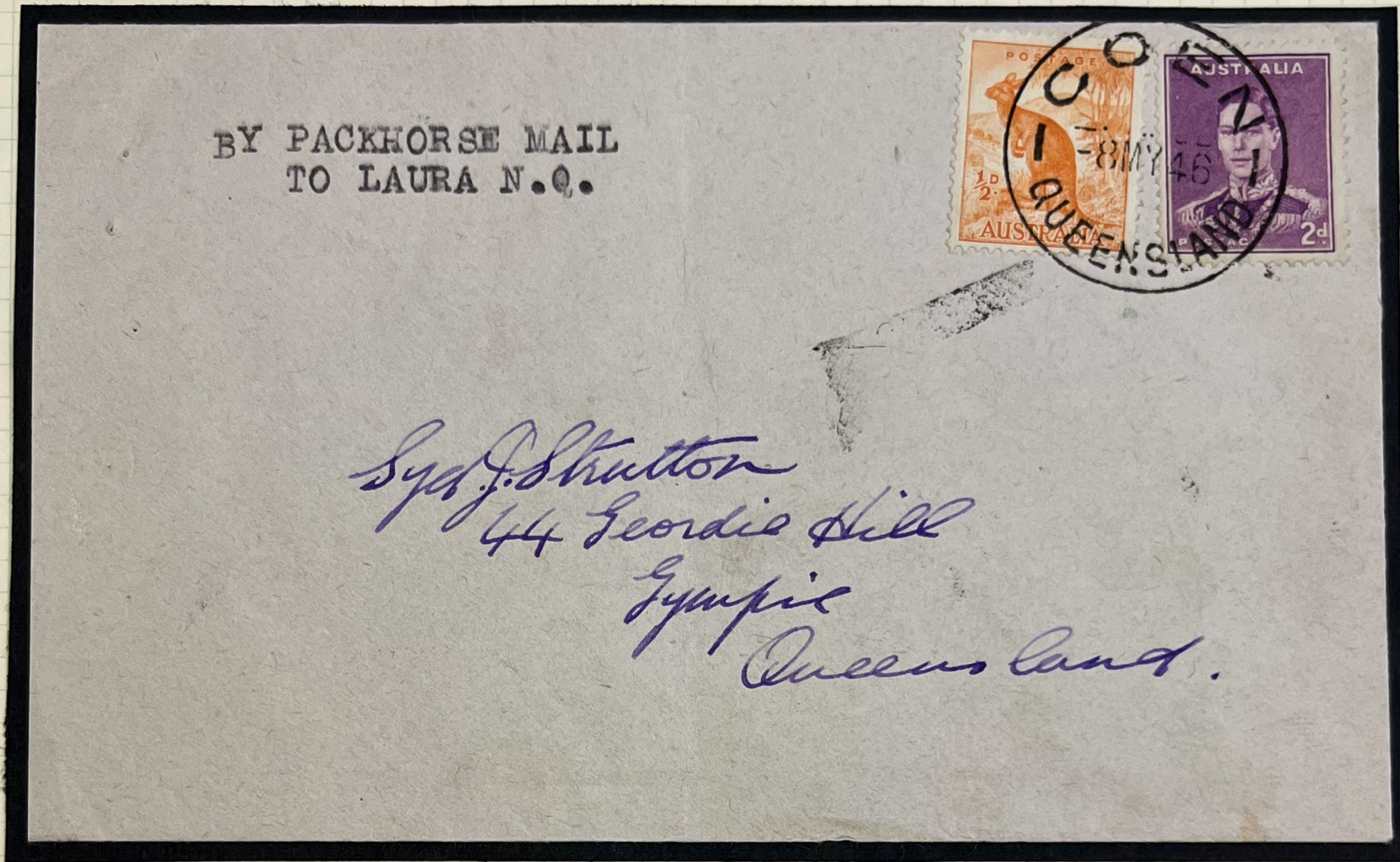


POSTAGE

ONE PENNY

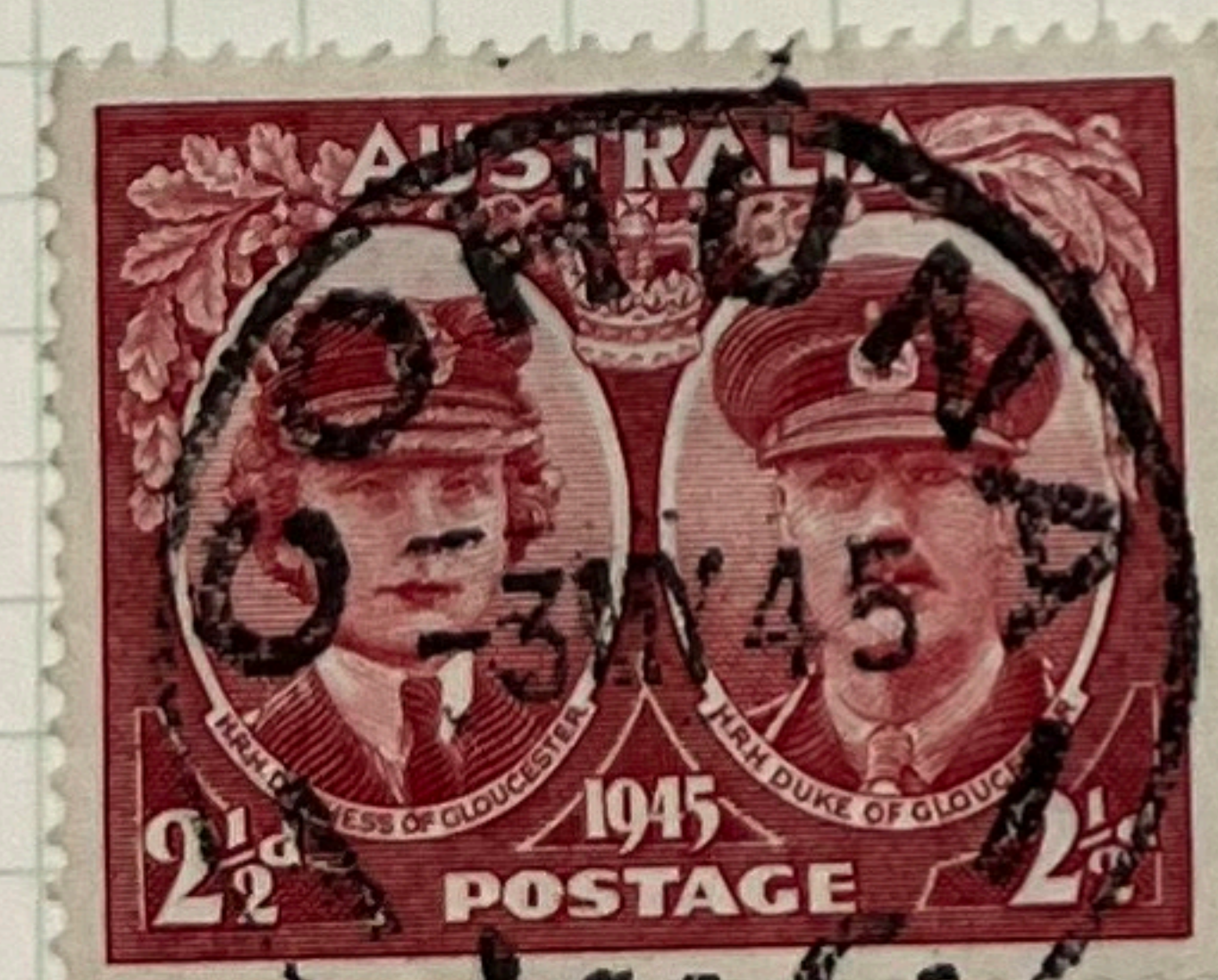
AUSTRALIA
Watermarked Small Crown and C of A Multiple
Issues of 1938 through 1946

Cancellations



AUSTRALIA
Watermarked Small Crown and C of A Multiple
Issues of 1940 through 1946

Cancellations



AUSTRALIA

AIR POST OFFICIAL STAMP

Unwatermarked

1931



F. E. Warner
Minneapolis 7
4436
Oakland Ave.
Minnesota
U.S.A.

AUSTRALIA
Air Post Stamps

Cancellations

Unwatermarked
1929 - 31



Watermarked Small Crown and C of A Multiple
1937

