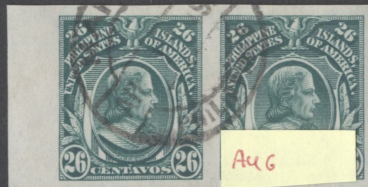


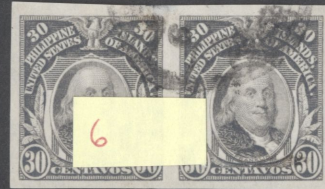
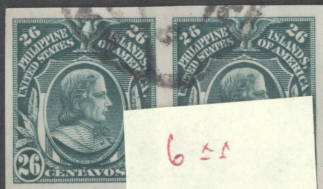
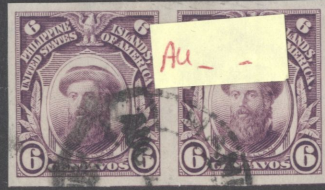
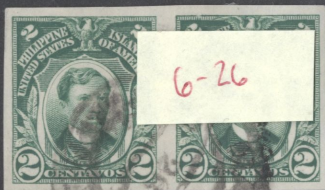
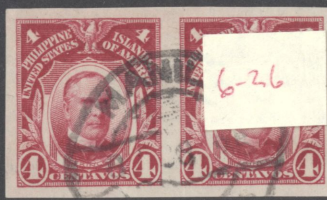
7





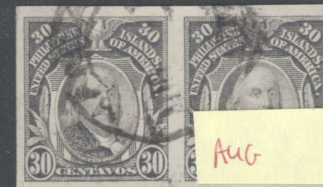
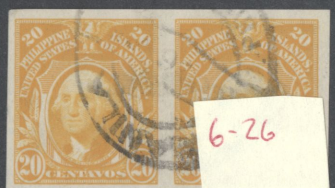
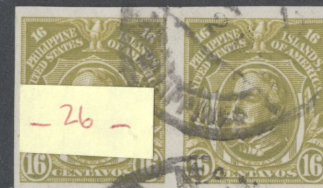
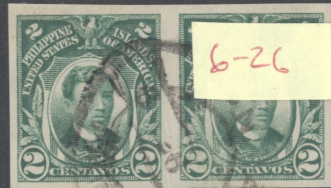
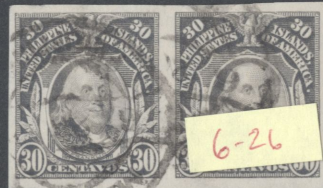
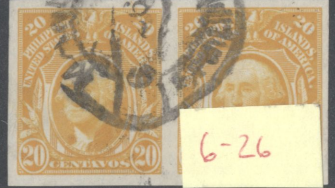
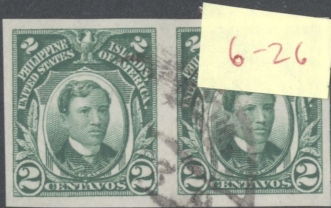
2





↳ m

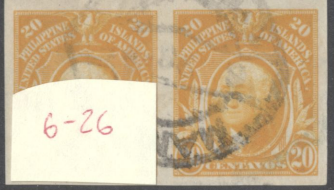
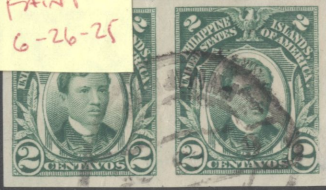




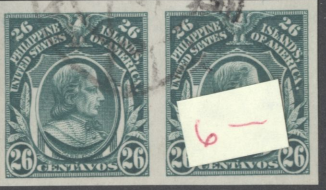
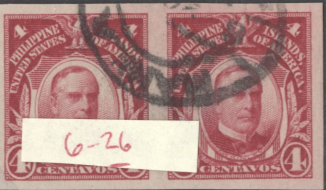
4

Faint
6-26-25

AUG 21



MOST w/ RECOGNIZABLE
1925 DATE CANCELS



5

7-22-26 REC
FDC





MANY w/ RECOGNIZABLE
1925 DATE CANCELS



9



SEVERAL W/ RECOGNIZABLE
1925 DATE CANCELS ↘



↘



80



9



10







✓ 13



Handwritten red markings, possibly 'H' and a checkmark.



✓ 15





81

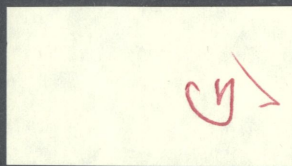


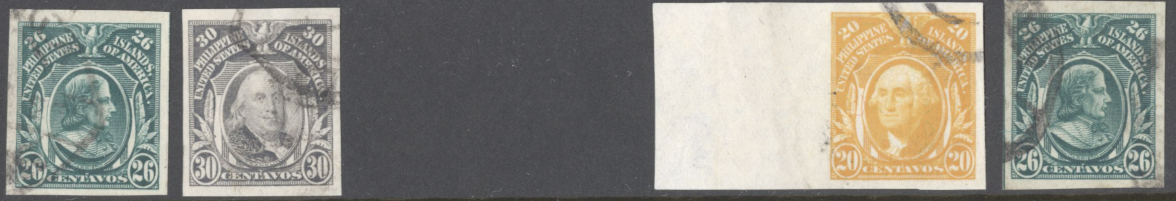
P1
L SOUND
R FLT

P2
R } RT-TA+
L } BOTH
CR.S
VF+ APP.

P4 SLIGHTLY
HVV. CANCEL
L CR.
R SOUND

MATCHED
CDS
CANCELS





CDS except
2nd

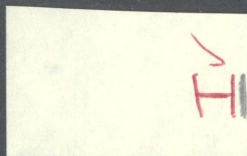


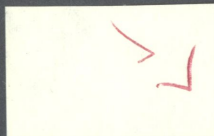
II





EBAY
SEPT. 2016

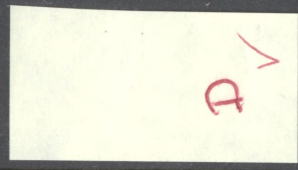






A







T22



T20



T19



T18



T17



T16



T15

Run
3rd



F10

U.S. POSSESSIONS

PHILIPPINES #340a-50a XF 1925
DATED PAIRS! CV \$407

• AMAZING SET OF LAMBERT 1925
DATED IMPERF PAIRS.
VIRTUALLY IMPOSSIBLE TO FIND
DATED AND VIRTUALLY ALL
ARE MATCHED TO THE KNOWN

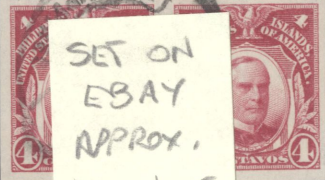
6-26-25 ERROR DATE! (6-26-25
WAS ACTUALLY 9-29-25 AS THE
NUMBERS WERE MISTAKENLY INVERTED
BY A POSTAL CLERK).

• THE STAMPS ARE SPECTACULAR WITH
FRESH, BRILLIANT COLOR ON BRIGHT,
WHITE PAPER VIRTUALLY UNIQUE TO
THE LAMBERT ISSUE! DEFINITE
SHOWPIECE "SET", STORE PRICE: \$355.95

6-26



6-26-25



SET ON
EBAY
APPROX.
JAN - JUNE
2012

6-6



6-26



25



25



6-26



6-26



25



6-26



6-26





8¢
L-P
BOT.
CR.

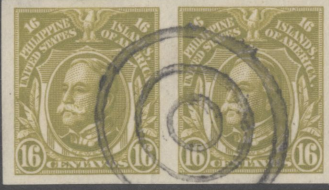


12¢
L-P
SM.
FLT.
BOT.



P1
LINE-P2
TOP CR.
! SCUFF
BOT. LT
CP.
F-VF APP.

P2 TOP
MARGIN
VERT. PAIR
TOP LT. CP.
BOT LRCC



T24

340a-50a @ PAIRS

2014 cv. \$ 521.50

NET \$ 248.00

294.00 +
540.00 +
1,080.00 +

003.....
1,914.00 *+

	2014
	<u>cv</u>
340a-50a	
PAIRS	521.50
351a PR.	800.00
352a PR.	2000.00
353a	3250.00
SINGLES	

6571.50

