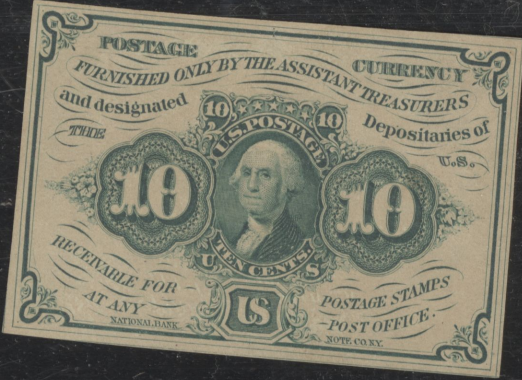
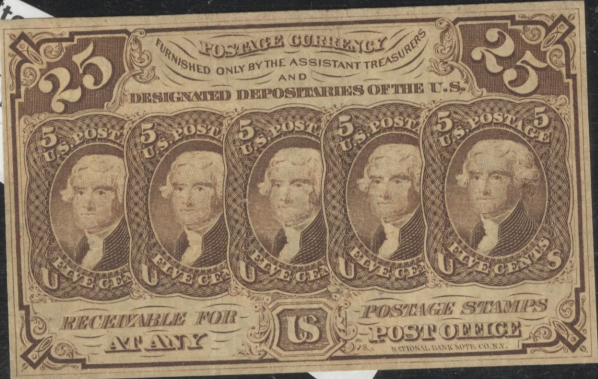


FR-1281  
BYNOXX  
178029

IT#  
ONAL



Item Title  
#1242 1862 10 CENTS First Issue Postage FRACTI  
ONAL

N#1242  
1st ISSUE  
10CENTS AU  
20% back \$7.00  
1863

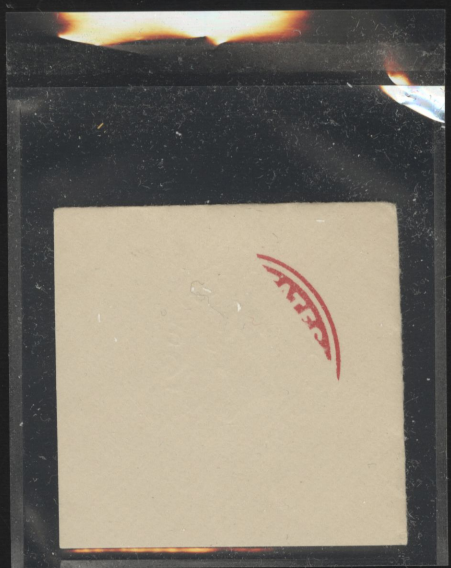
**THE STAMP GALLERY**

(925) 944-9111  
2678 NORTH MAIN STREET  
WALNUT CREEK, CA 94597

195.00  
ALL  
(SWITCHED  
STAMPS)  
4 PERMS

BID  
BOARD  
OWNER #  
1

LOT #  
183-21



COUNTRY U.S.A. CAT. # J29  
CONDITION ★H SCARCE HI VALUE OF SET  
CAT. \$ 700.00 MIN BID \$ 145.00



#102 <sup>30</sup>/<sub>1</sub>



Style 1-02



Style No. GK 102BK





3824 4954 5099

#573 \*NEVER HINGED

1923 \$5<sup>00</sup> HI VALUE!

BRIGHT, FRESH COLOR!

CAT. \$180<sup>00</sup>

56,660

3919 7383 3677

#217 \*H, 1887 30¢

"ORANGE BROWN"

FRESH VF-XF BEAUTY!

CAT. \$250<sup>00</sup>

55,667

3908 5814 4566

#573a \*H, 1923

CARMINE LAKE & DARK BLUE

VF \$5<sup>00</sup> HI VALUE

OF SET! CAT. \$190<sup>00</sup>

45,880



**THE STAMP GALLERY**

(925) 944-9111  
2678 NORTH MAIN STREET  
WALNUT CREEK, CA 94597

BID

BOARD

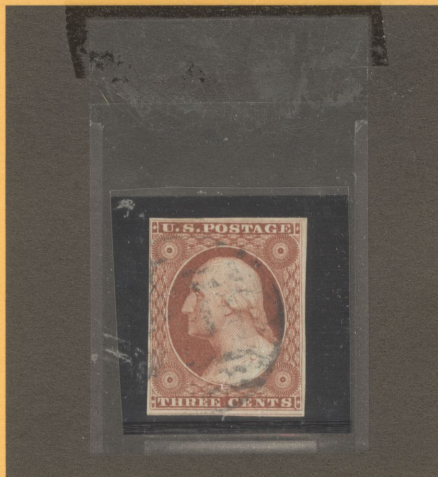
OWNER #

MAS

LOT #

1-10

DEEP ORANGE  
BROWN  
TYPE I



COUNTRY U.S.A. CAT. # 10

CONDITION VF-XF BEAUTY!

CAT. \$ 220<sup>00</sup> MIN BID \$ 154<sup>20</sup>

**THE STAMP GALLERY**

(925) 944-9111  
2678 NORTH MAIN STREET  
WALNUT CREEK, CA 94597

BID

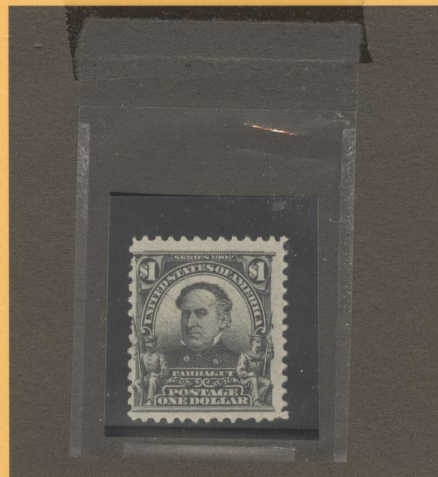
BOARD

OWNER #

USM

LOT #

USM-1



COUNTRY U.S.A. CAT. # 311

CONDITION ★ NG

CAT. \$ 240<sup>00</sup> (600<sup>00</sup>) MIN BID \$ 74<sup>00</sup>  
*0/00*



COUNTRY PI 31

NOTES VF-XF-Hmks CAT. NO. 254

225.— SELLING PRICE



gmi → 271413

**THE STAMP GALLERY**

(925) 944-9111  
2678 NORTH MAIN STREET  
WALNUT CREEK, CA 94597

BID

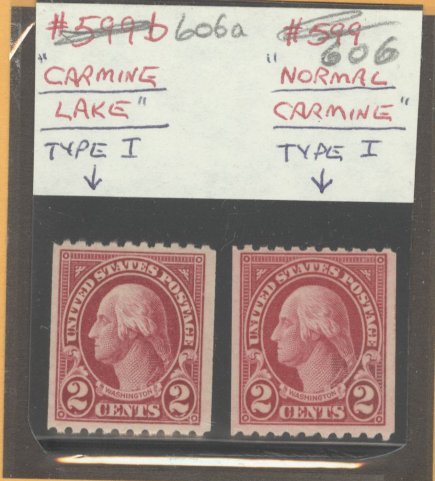
BOARD

OWNER #

US

LOT #

US-91



COUNTRY U.S.A. CAT. # 599B

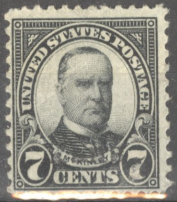
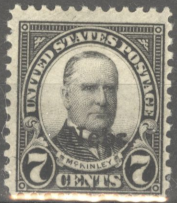
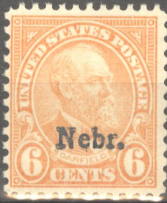
CONDITION ★ NH RARE CARMINE LAKE, VF COIL

CAT. \$ 650<sup>00</sup> MIN BID \$ 350<sup>00</sup>  
*460!*

193  
280<sup>00</sup>  
SELL

#599B 606a #599  
"CARMINE LAKE" "NORMAL"  
"CARMINE"  
TYPE I TYPE I  
↓ ↓





374529





THE STAMP GALLERY  
(510) 944-9111  
1515 LOCUST STREET  
WALNUT CREEK, CA 94596

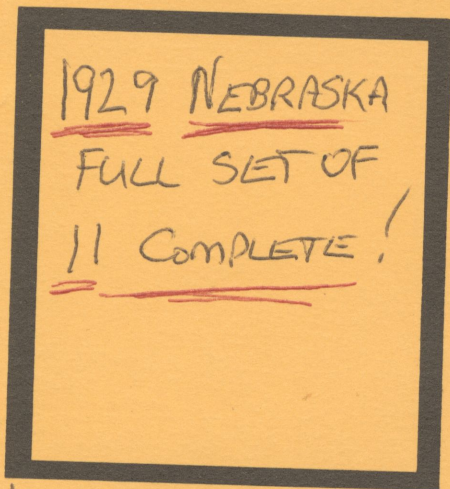
BID  
BOARD

OWNER #

JRB

LOT #

JRB-5



COUNTRY

U.S.A.

CAT. #

669-79

CONDITION

\*H, F-VF SET OF 11

CAT. \$

265<sup>25</sup>

MIN BID \$

124<sup>00</sup>

THE STAMP GALLERY  
(510) 944-9111  
1515 LOCUST STREET  
WALNUT CREEK, CA 94596

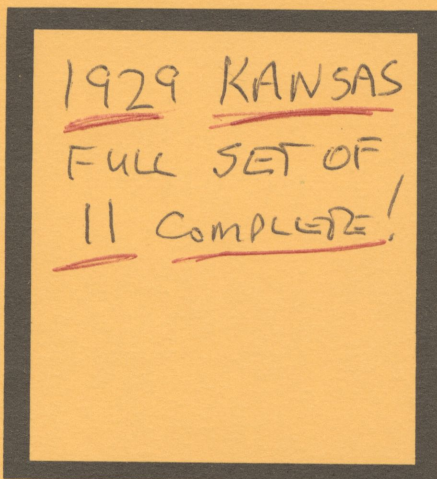
BID  
BOARD

OWNER #

JRB

LOT #

JRB-4



COUNTRY

U.S.A.

CAT. #

658-68

CONDITION

\*H, F-VF TO VF SET

CAT. \$

216<sup>25</sup>

MIN BID \$

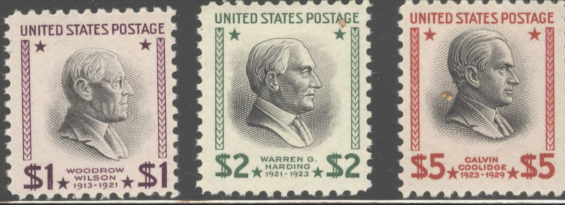
124<sup>00</sup>

~~scribble~~

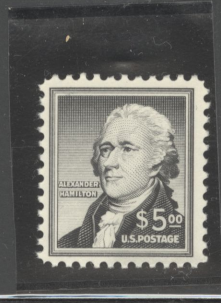
50



Category U.S.A. A# (S#)  
 Country: 20TH HIGH SETS CAT# 832-34  
 Condition: \*NH, VF! B/O:  
 Inside:  
 CAT\$ 98.00 Min.\$ 59.50 Cost LUCY  
 Shipping STD: Lot # JRB-35



Category U.S.A. A# (S#)  
 Country: 20TH HI VALUE! CAT# 1053  
 Condition: \*NH B/O:  
 Inside:  
 CAT\$ 47.50 Min.\$ 29.75 Cost WGRU  
 Shipping STD: Lot # JRB-36



Category U.S.A. A# (S#)  
 Country: 1918 AIRMAIL CAT# C1  
 Condition: \*NH, VF-XF! B/O:  
 Inside:  
 CAT\$ 110- Min.\$ 87.50 Cost UAWK  
 Shipping STD: Lot # JRB-37

Category U.S.A. A# (S#)  
 Country: 1918 AIRMAIL CAT# C2  
 Condition: \*NH, XF! B/O:  
 Inside:  
 CAT\$ 120- Min.\$ 98- Cost URRS  
 Shipping STD: Lot # JRB-38



Category U.S.A. A# (S#)  
 Country: 1918 AIRMAIL CAT# C3  
 Condition: \*NH, VF-XF! B/O:  
 Inside:  
 CAT\$ 130- Min.\$ 89.75 Cost ULRY  
 Shipping STD: Lot # JRB-39

Category U.S.A. A# (S#)  
 Country: 1933 AIRMAIL CAT# C18  
 Condition: \*NH, XF-SUPERB B/O:  
 Inside:  
 CAT\$ 75.00 Min.\$ 59.75 Cost LURK  
 Shipping STD: Lot # JRB-40





Category: U.S.A. 20<sup>TH</sup> A# (S#)  
 Country: \*V.L.H. PERF. 12 CAT# 419  
 Condition: 1914 ISSUE B/O: \_\_\_\_\_  
 Inside: \_\_\_\_\_  
 CAT\$ 775<sup>00</sup> Min.\$ 108<sup>00</sup> Cost TURS  
 Shipping STD: \_\_\_\_\_ Lot # FJ-101



Category: \_\_\_\_\_ A# \_\_\_\_\_ S# 20  
 Country: U.S.A. CAT# 449  
 Condition: (C) w/ SMALL THIN B/O: \_\_\_\_\_  
 Inside: RARE COIL TYPE I  
 CAT\$ 600- Min.\$ 149- Cost \_\_\_\_\_  
 Shipping STD: \_\_\_\_\_ Lot # XX-3804



Category: U.S.A. A# \_\_\_\_\_ S# 20  
 Country: 1917 PERF. 11, 8¢ CAT# 508  
 Condition: \*NH B/O: \_\_\_\_\_  
 Inside: \_\_\_\_\_  
 CAT\$ 25<sup>00</sup> Min.\$ 11.95 Cost BF  
 Shipping STD: \_\_\_\_\_ Lot # CF-144



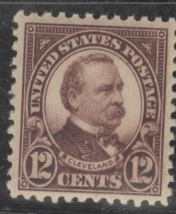
Category: 1901-40 \* A# \_\_\_\_\_ S# \_\_\_\_\_  
 Country: U.S.A. CAT# 508  
 Condition: \*NH B/O: \_\_\_\_\_  
 Inside: \_\_\_\_\_  
 CAT\$ 25<sup>00</sup> Min.\$ 13.50 Cost \_\_\_\_\_  
 Shipping STD: \_\_\_\_\_ Lot # XX-3956



Category: OFFSET TYPE II A# \_\_\_\_\_ S# 21  
 Country: U.S.A. CAT# 528A  
 Condition: \*NH, 1920 B/O: \_\_\_\_\_  
 Inside: \_\_\_\_\_  
 CAT\$ 115<sup>00</sup> Min.\$ 29.25 Cost SRWT  
 Shipping STD: \_\_\_\_\_ Lot # YB-4



Category: U.S.A. A# \_\_\_\_\_ S# (S#)  
 Country: 20<sup>TH</sup> CENTURY / CAT# 564  
 Condition: \*NH, SUPERB B/O: \_\_\_\_\_  
 Inside: \_\_\_\_\_  
 CAT\$ 27.50 Min.\$ 24.50 Cost WNER  
 Shipping STD: \_\_\_\_\_ Lot # JRB-56







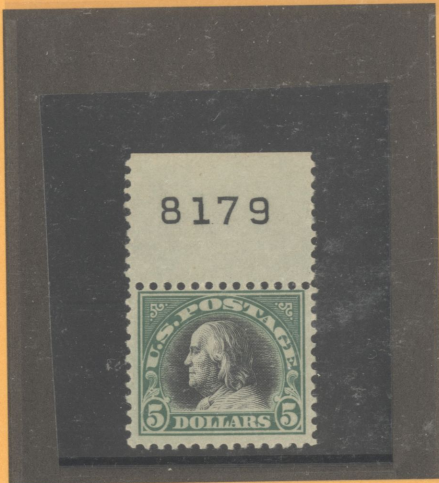


**THE STAMP GALLERY**

(925) 944-9111  
2678 NORTH MAIN STREET  
WALNUT CREEK, CA 94597

COUNTRY U.S.A.  
CAT. # 524\*  
CAT. VAL. 160<sup>00</sup>  
MINIMUM 94<sup>00</sup>

BID  
BOARD  
OWNER #  
1482



BIDDER #	\$	BID

BUY IT NOW 99<sup>75</sup>  
OWNER # 1482  
LOT # GL-126

LOT # 126  
GL-126  
1918 \$5<sup>00</sup>  
DEEP GREEN  
BLACK  
PERF. 11

COUNTRY U.S.A. CAT. # 524  
CONDITION \*LH, FRESH PLATE # SINGLE  
CAT. \$ 160<sup>00</sup> MIN BID \$ 94<sup>00</sup>

**THE STAMP GALLERY**

(925) 944-9111  
2678 NORTH MAIN STREET  
WALNUT CREEK, CA 94597

COUNTRY U.S.A.  
CAT. # 438\*\*  
CAT. VAL. 400<sup>00</sup>  
MINIMUM 168<sup>00</sup>

BID  
BOARD  
OWNER #  
1482



BIDDER #	\$	BID

LOT #  
GL-95  
1914 20¢  
ULTRAMARINE  
PERF. 10  
S.L. WTK

COUNTRY U.S.A. CAT. # 438  
CONDITION \*NH, BRILLIANT, RICH COLOR!  
CAT. \$ 400<sup>00</sup> MIN BID \$ 168<sup>00</sup>

BUY IT NOW 178<sup>00</sup>  
OWNER # 1482  
LOT # GL-95

**THE STAMP GALLERY**

(925) 944-9111  
2678 NORTH MAIN STREET  
WALNUT CREEK, CA 94597

COUNTRY U.S.A.  
CAT. # 526\* [A]  
CAT. VAL. 240<sup>00</sup>++  
MINIMUM 168<sup>00</sup>

BID  
BOARD  
OWNER #  
1482



BIDDER #	\$	BID

BUY IT NOW 178<sup>00</sup>  
OWNER # 1482  
LOT # GL-80

LOT #  
GL-80  
1920 2¢  
TYPE IV  
OFFSETS  
PRINT

COUNTRY U.S.A. CAT. # 526  
CONDITION \*VLH, VF PLATE # w/ "GHOST" PLATE  
CAT. \$ 240<sup>00</sup>++ MIN BID \$ 168<sup>00</sup>

**THE STAMP GALLERY**

(925) 944-9111  
2678 NORTH MAIN STREET  
WALNUT CREEK, CA 94597

COUNTRY U.S.A.  
CAT. # 475\*\*  
CAT. VAL. 375<sup>00</sup>  
MINIMUM 220<sup>00</sup>

BID  
BOARD  
OWNER #  
1482



BIDDER #	\$	BID

LOT #  
GL-86  
1916 15¢  
PERF. 10  
NO WTK

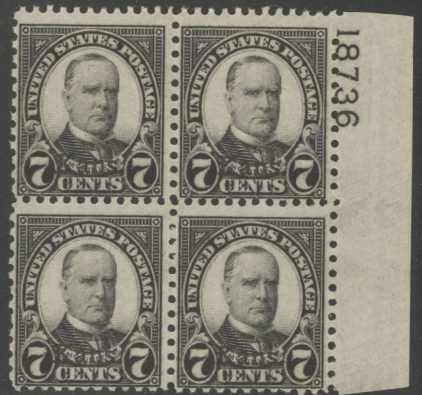
COUNTRY U.S.A. CAT. # 475  
CONDITION \*NH, SHARP, FRESH COLOR!  
CAT. \$ 375<sup>00</sup> MIN BID \$ 220<sup>00</sup>

BUY IT NOW 235<sup>00</sup>  
OWNER # 1482  
LOT # GL-86



#658-68 NET \$198-

#658-68 A H, 1929  
SET KANSAS O'PRINTS  
"POOR MAN'S SET"  
OF PLATE BLOCKS -  
MISSING SELVEGE ON  
TOP OR BOTTOM OF EACH  
BLOCK, THEREFORE  
CAT. VALUE IS FOR  
BLOCKS OF 4 ONLY!  
STILL QUITE SCARCE  
CAT. \$865<sup>00</sup>





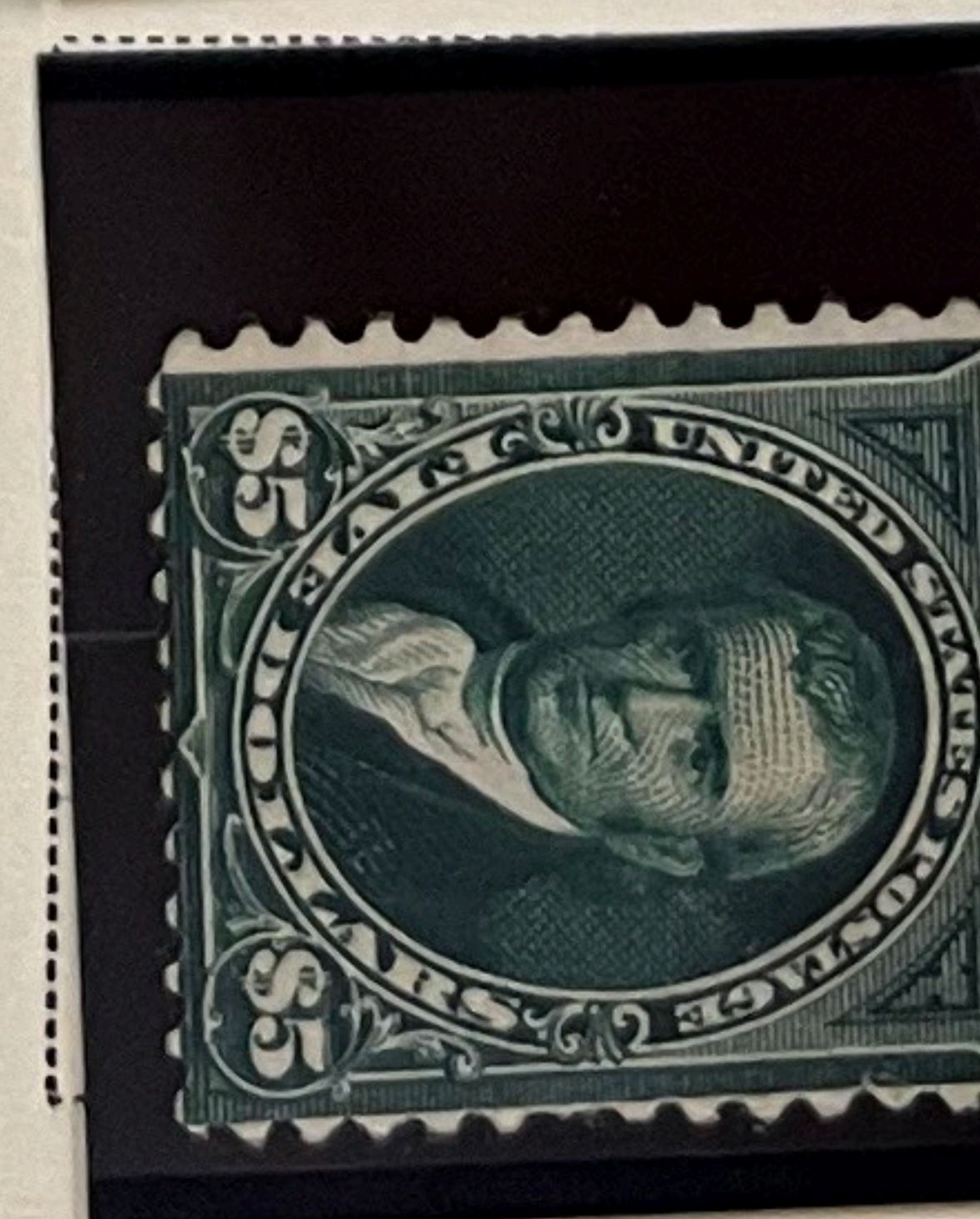
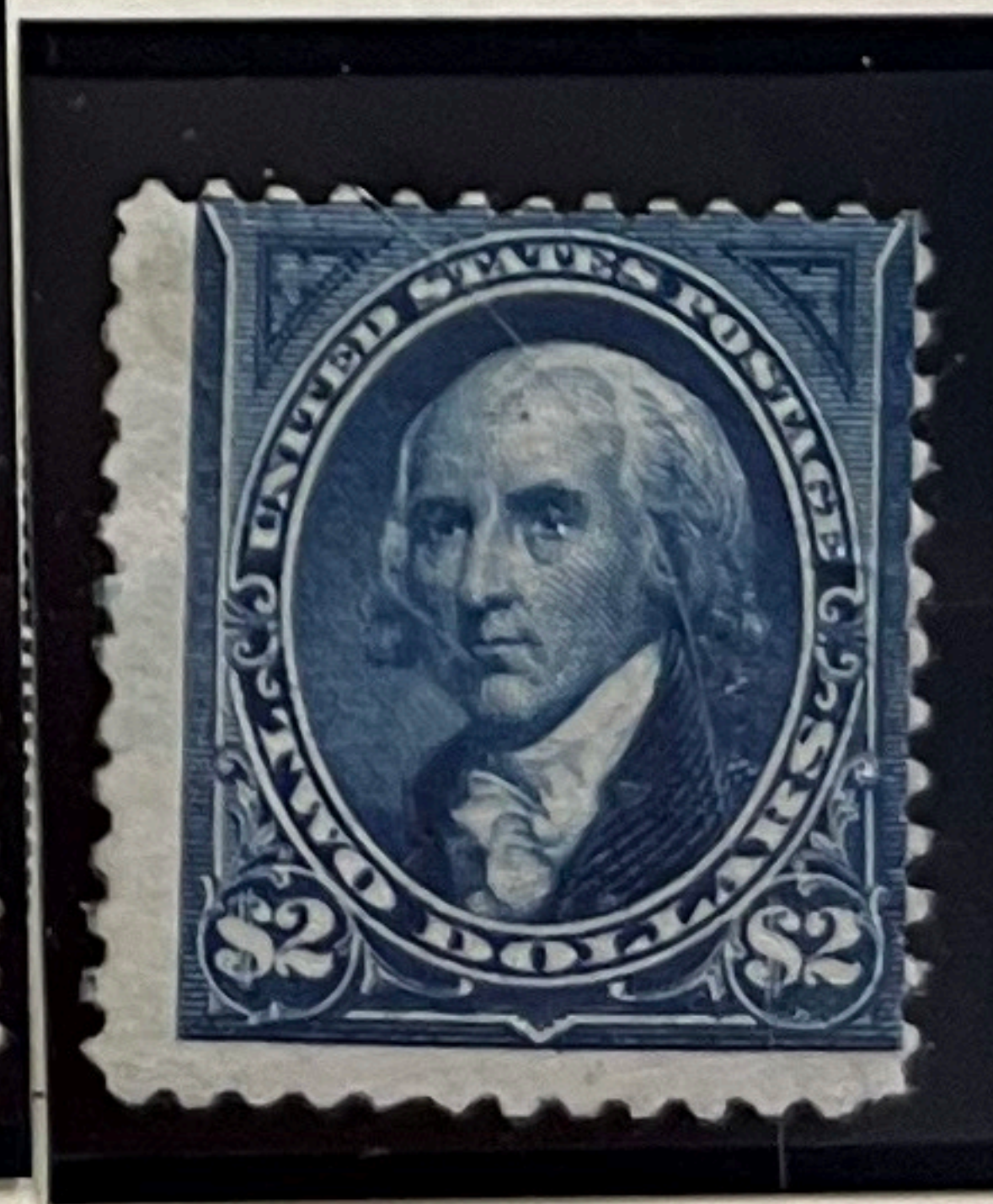
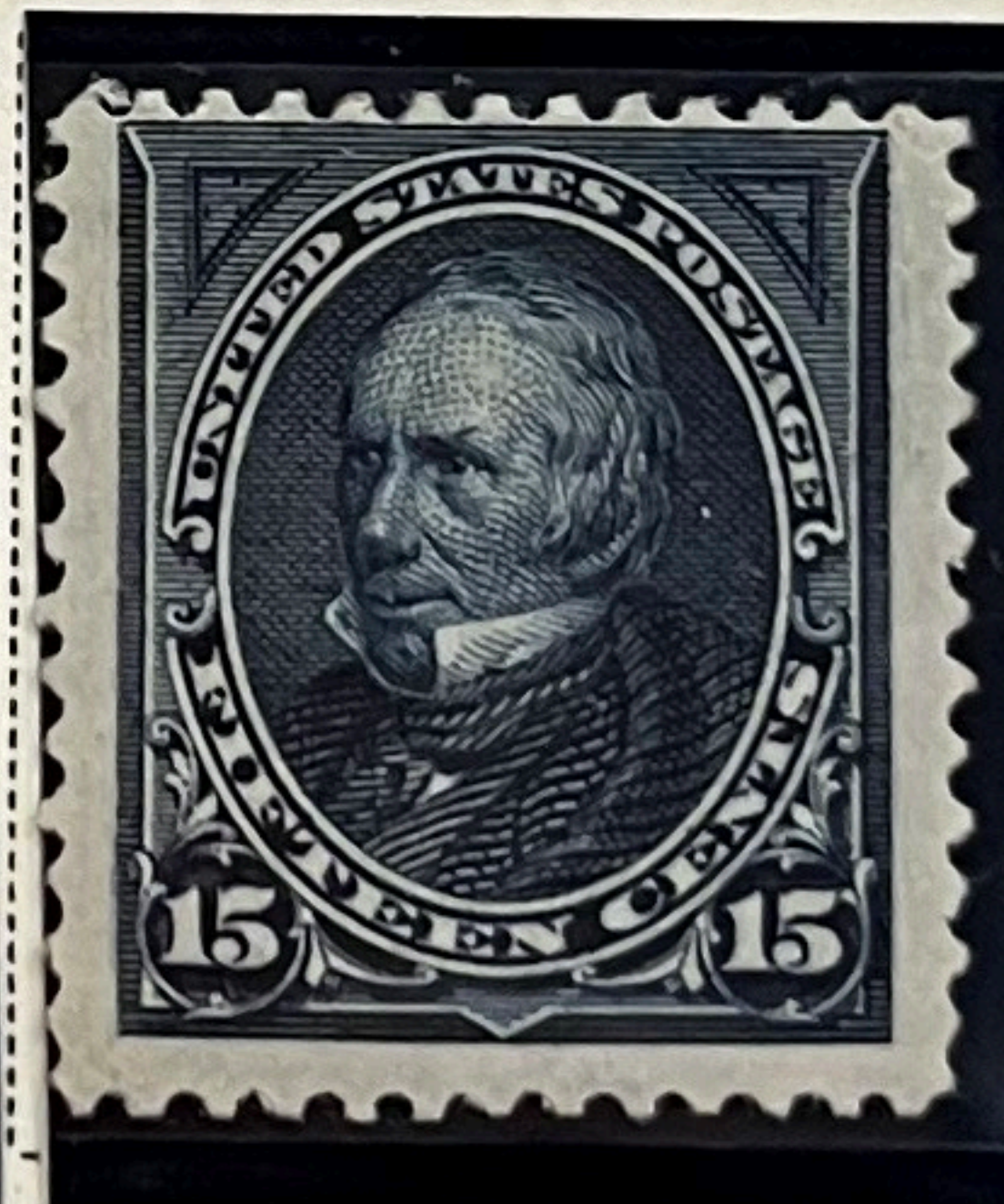
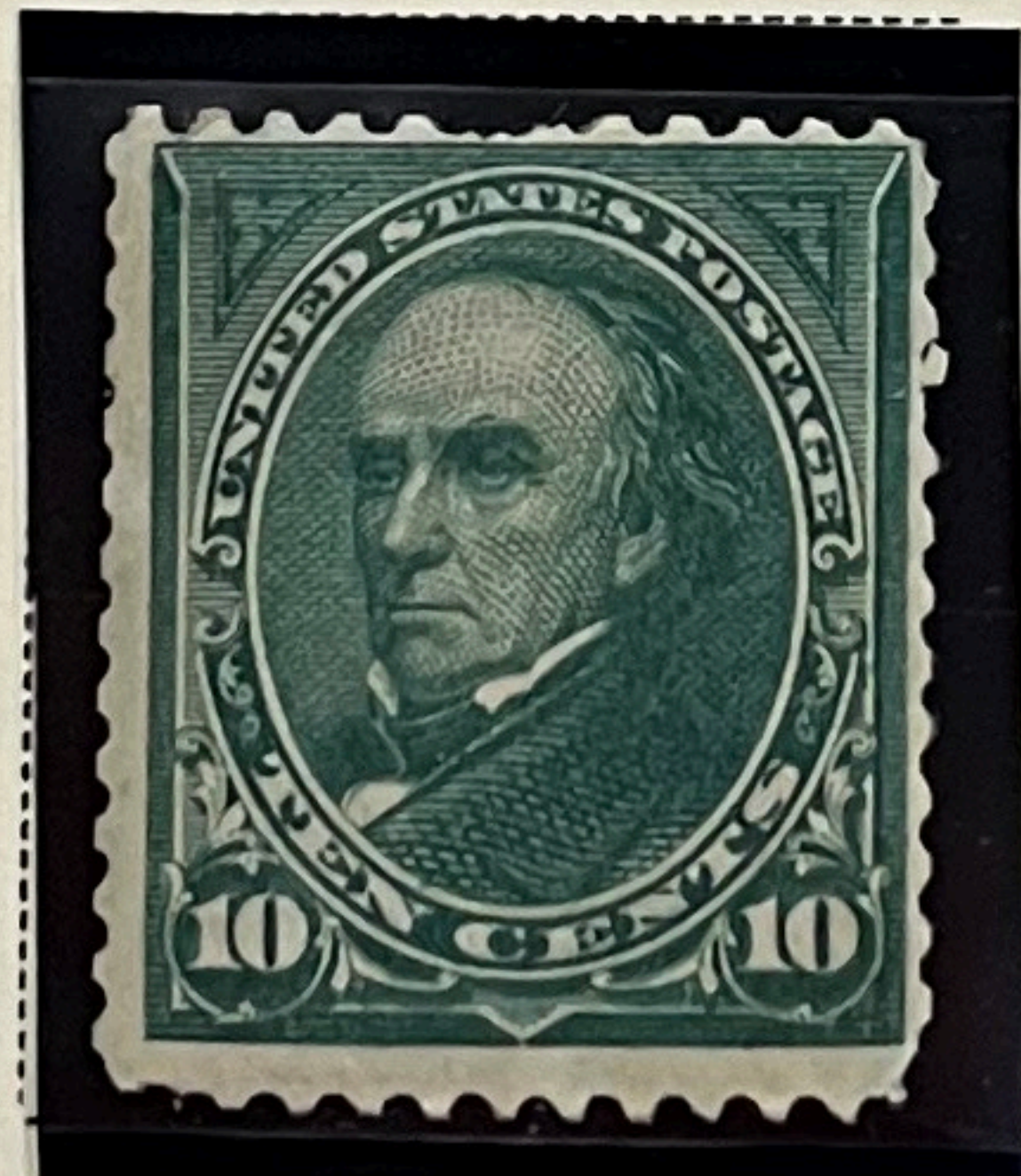
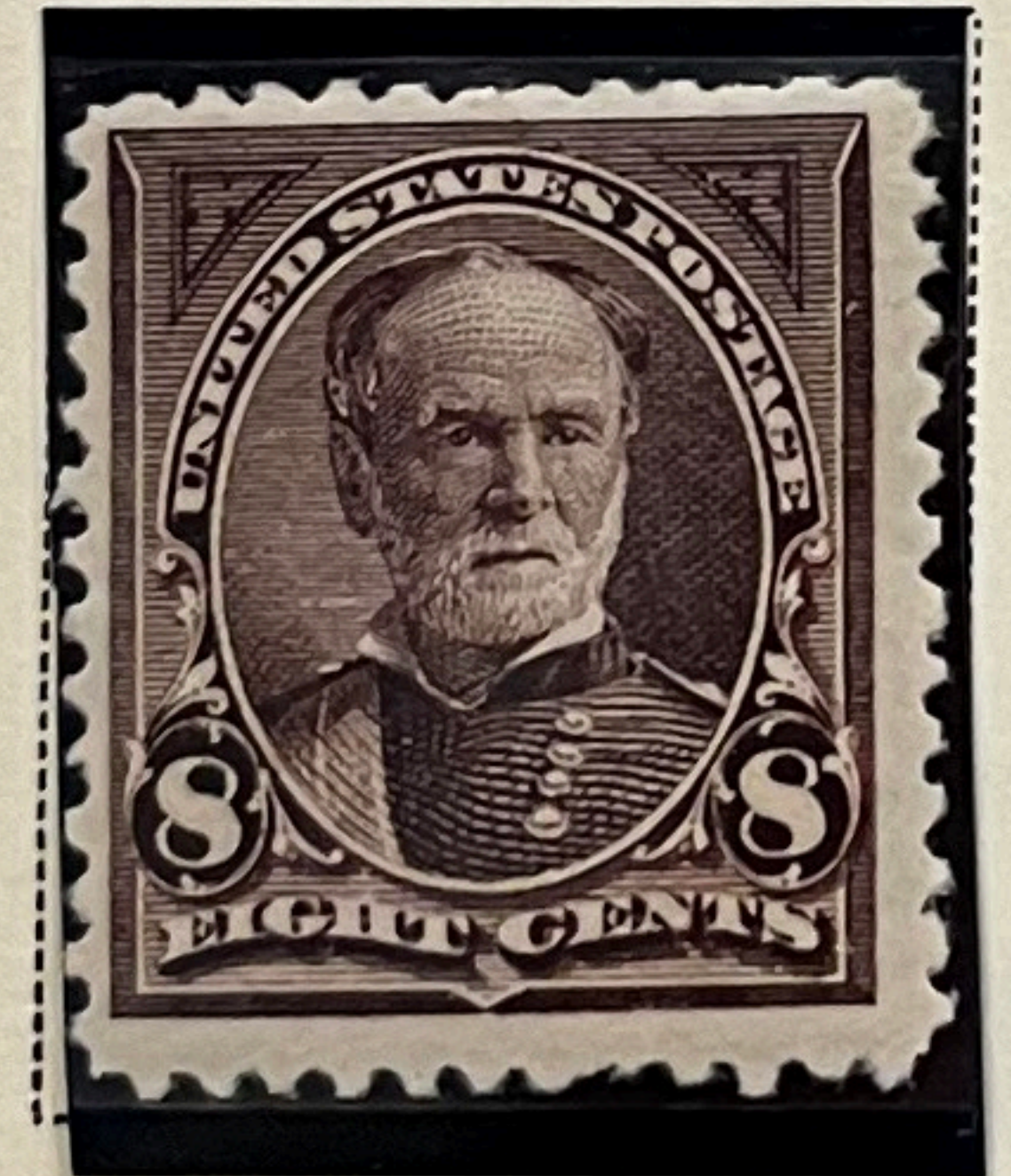
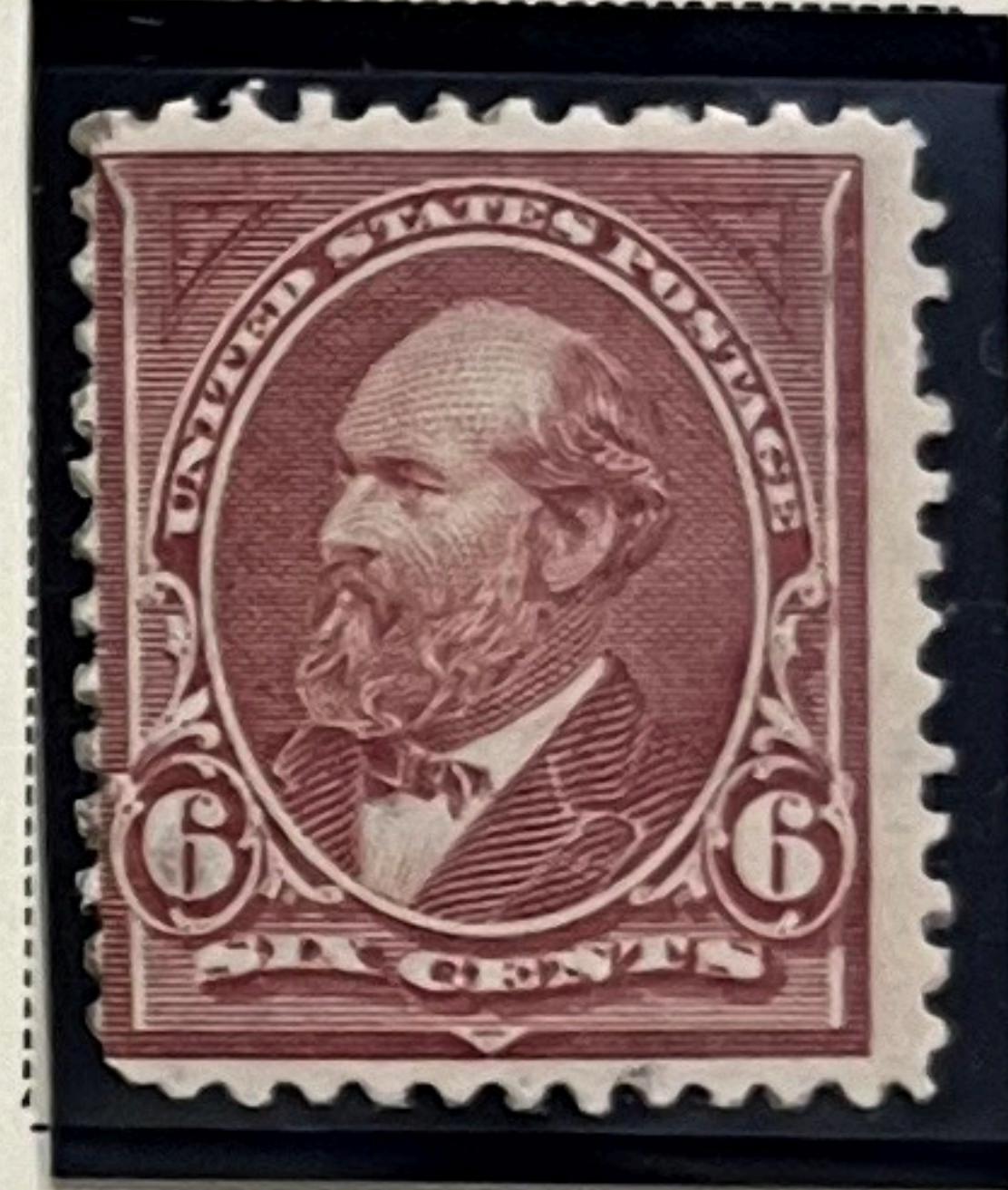
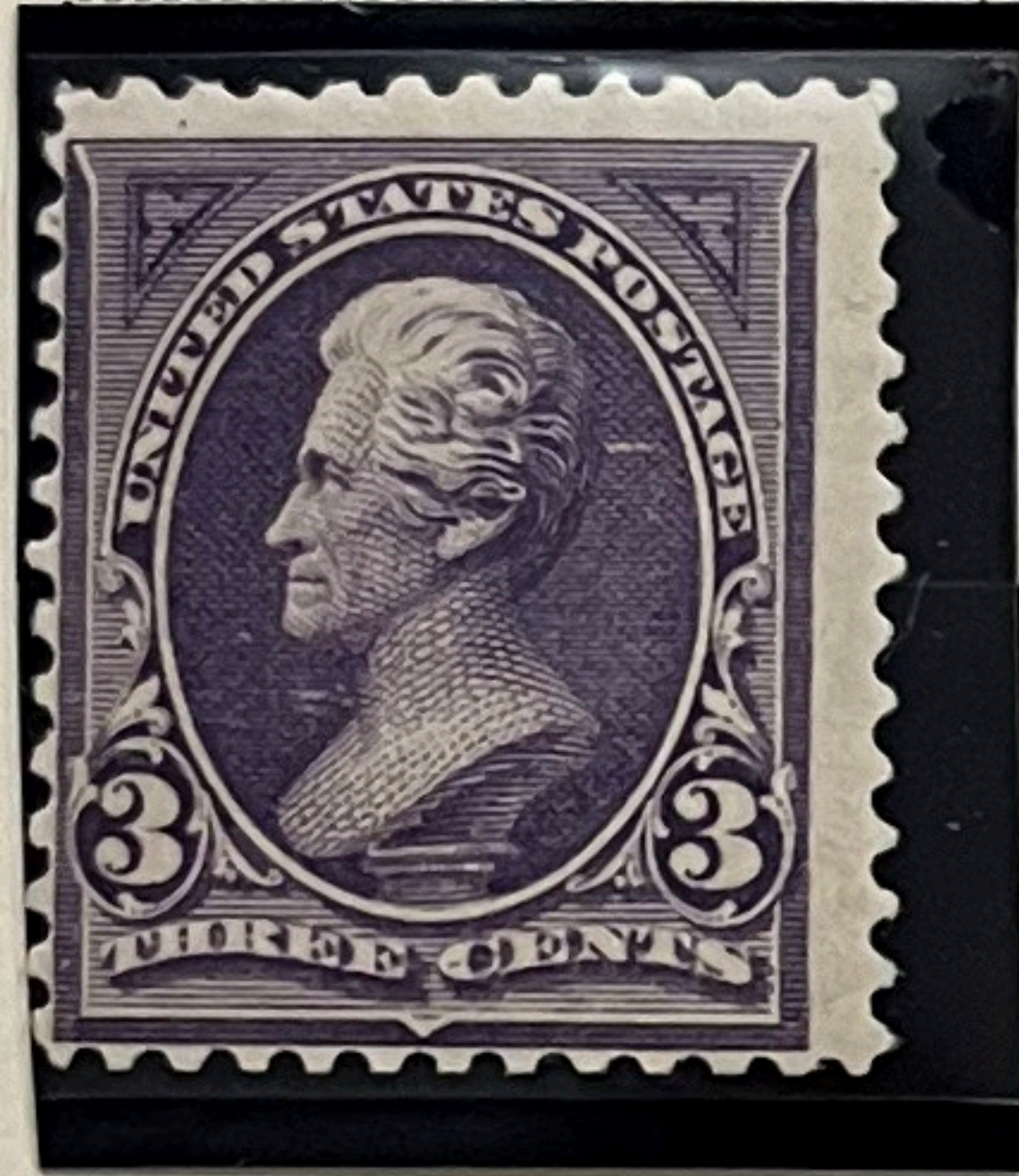




# POSTAGE

Since 1894 all postage stamps except Nos. 909 to 921 have been  
Engraved and Printed by the Bureau of Engraving and Printing

1894



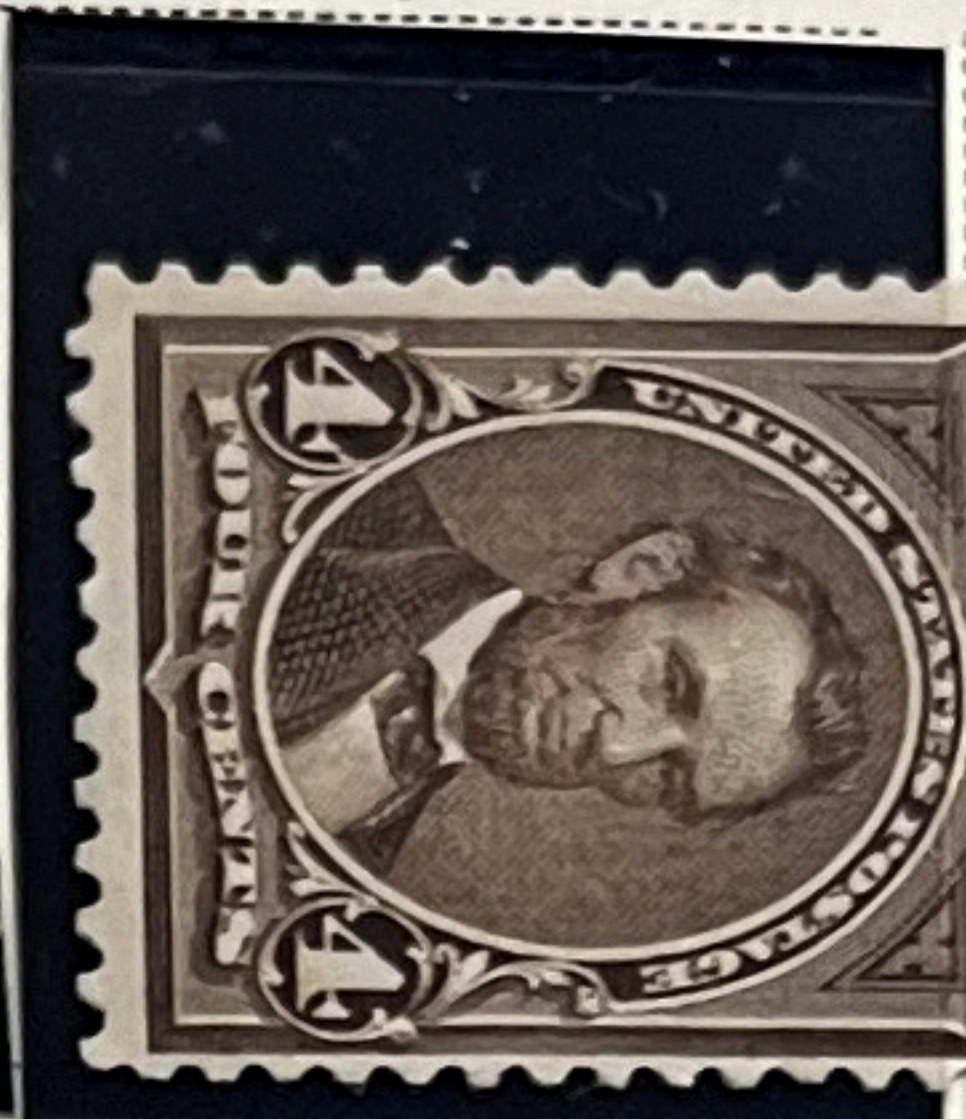
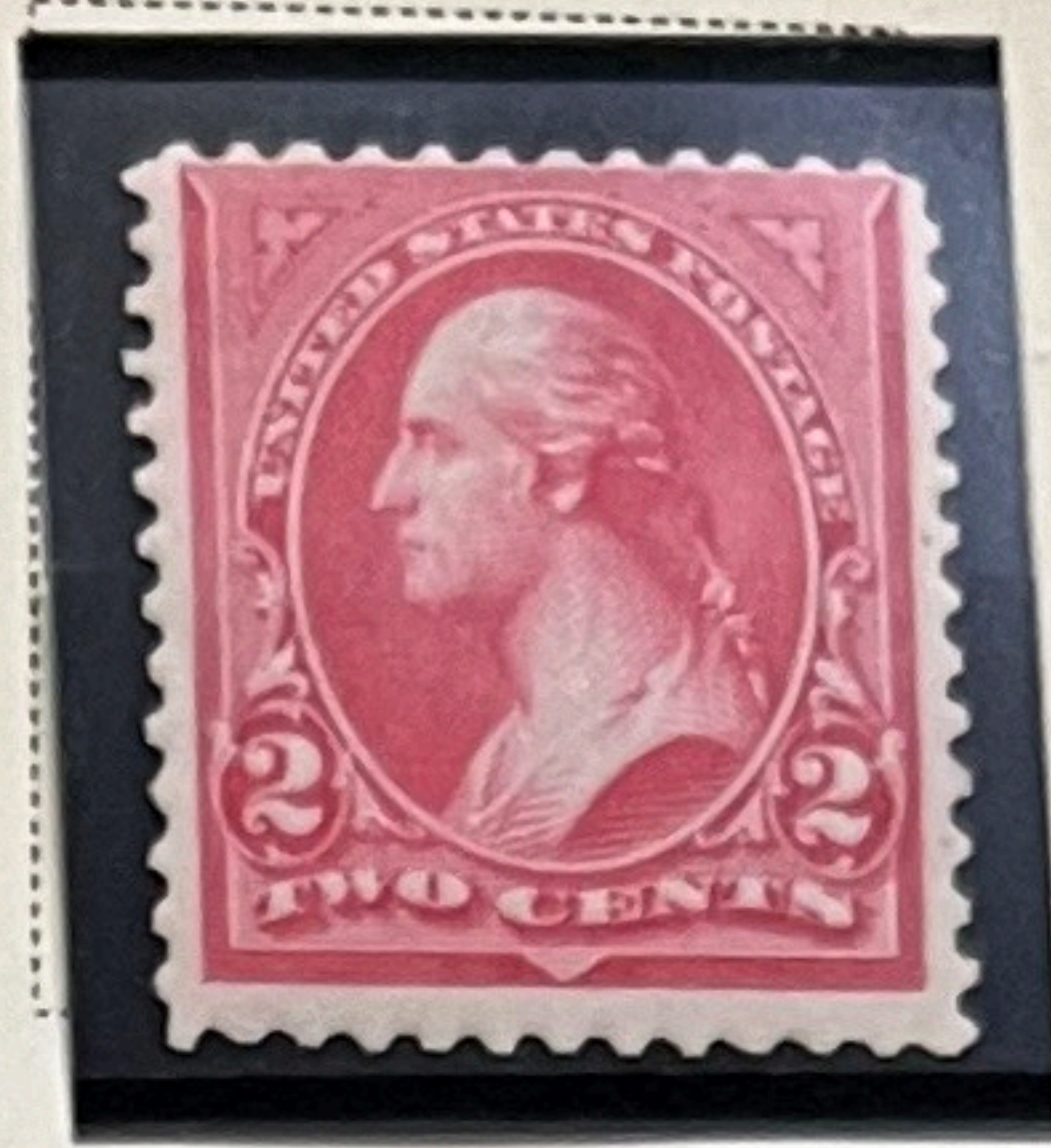


POSTAGE

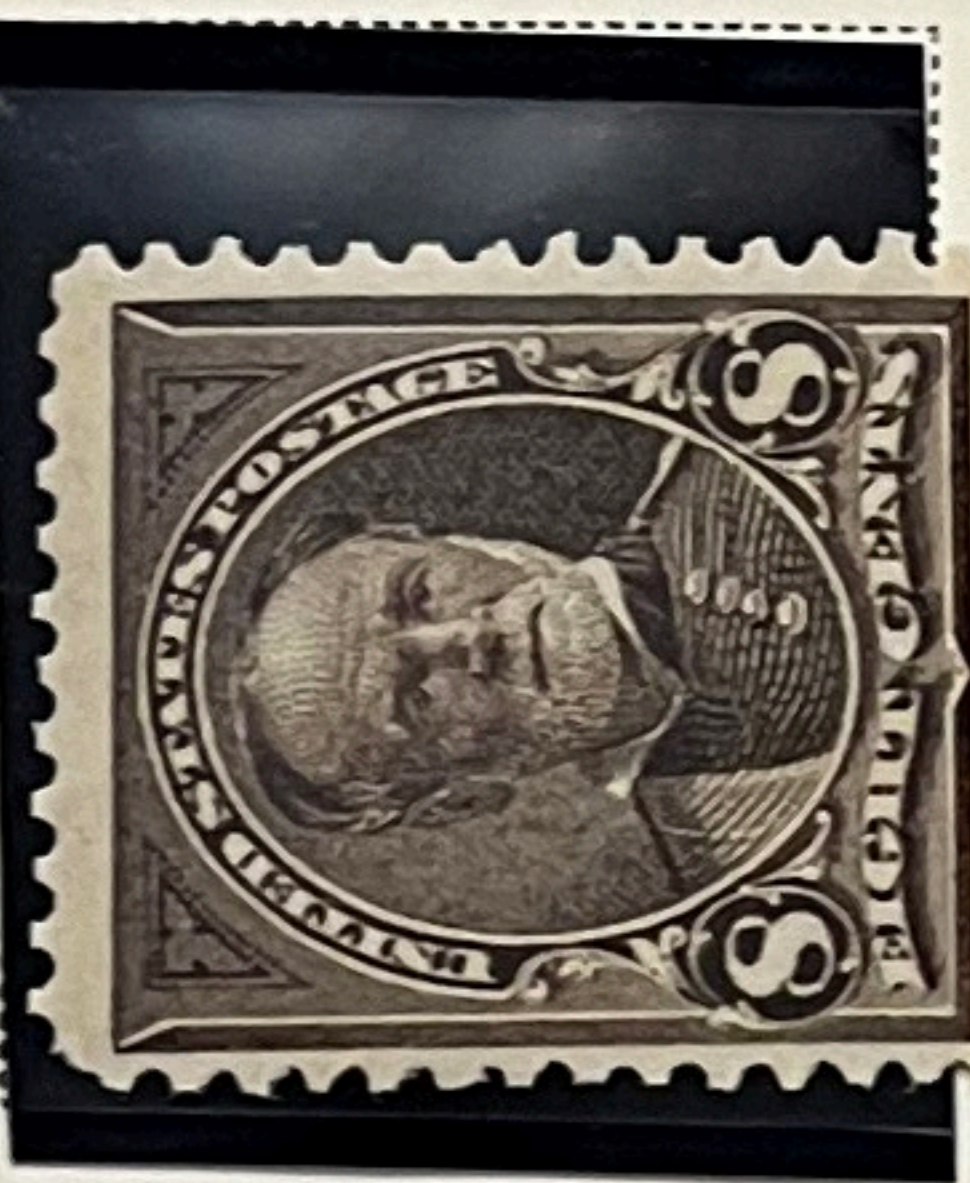
Watermarked USPS

1895

0  
2 C  
CARMINE  
Triangle I  
(265)



265

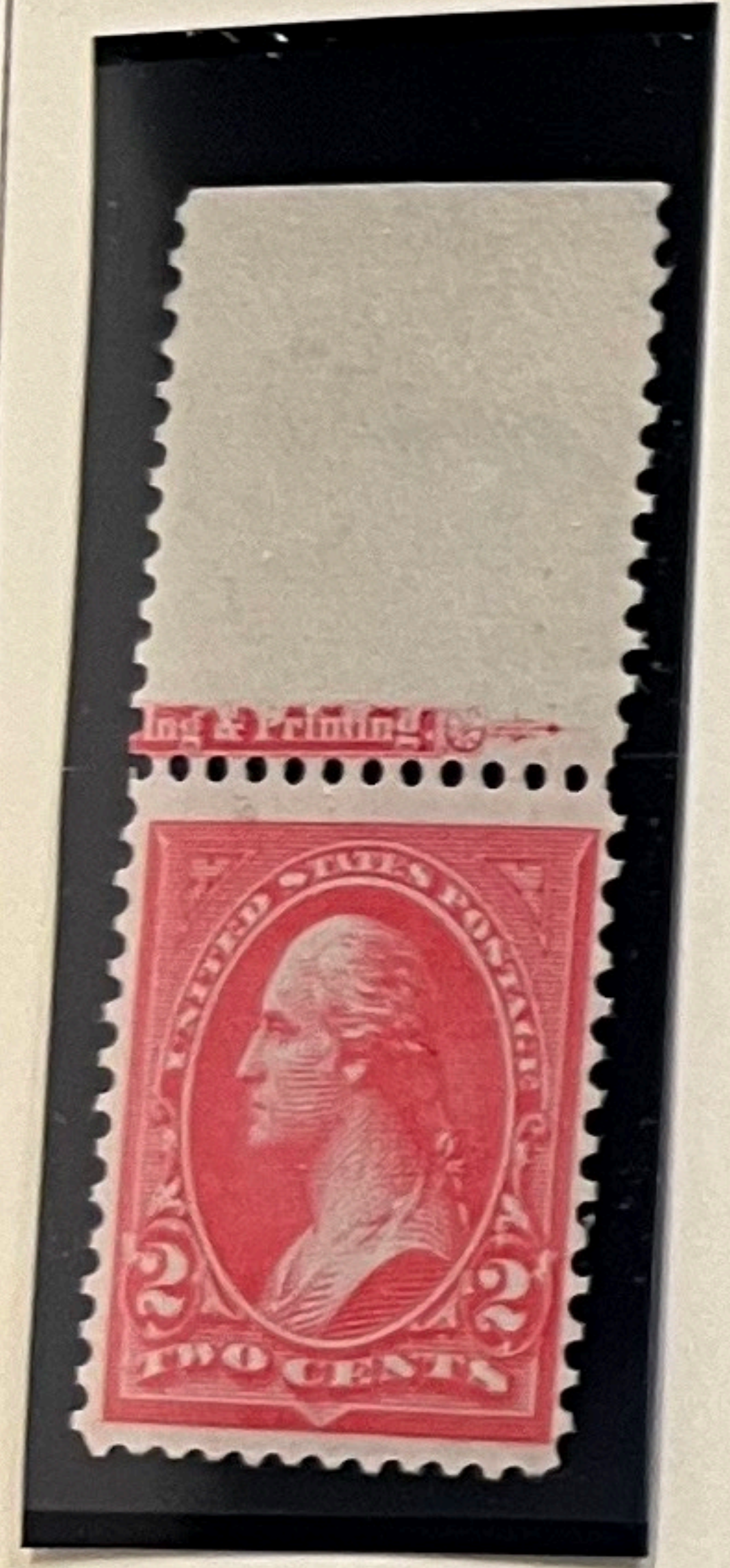


275a

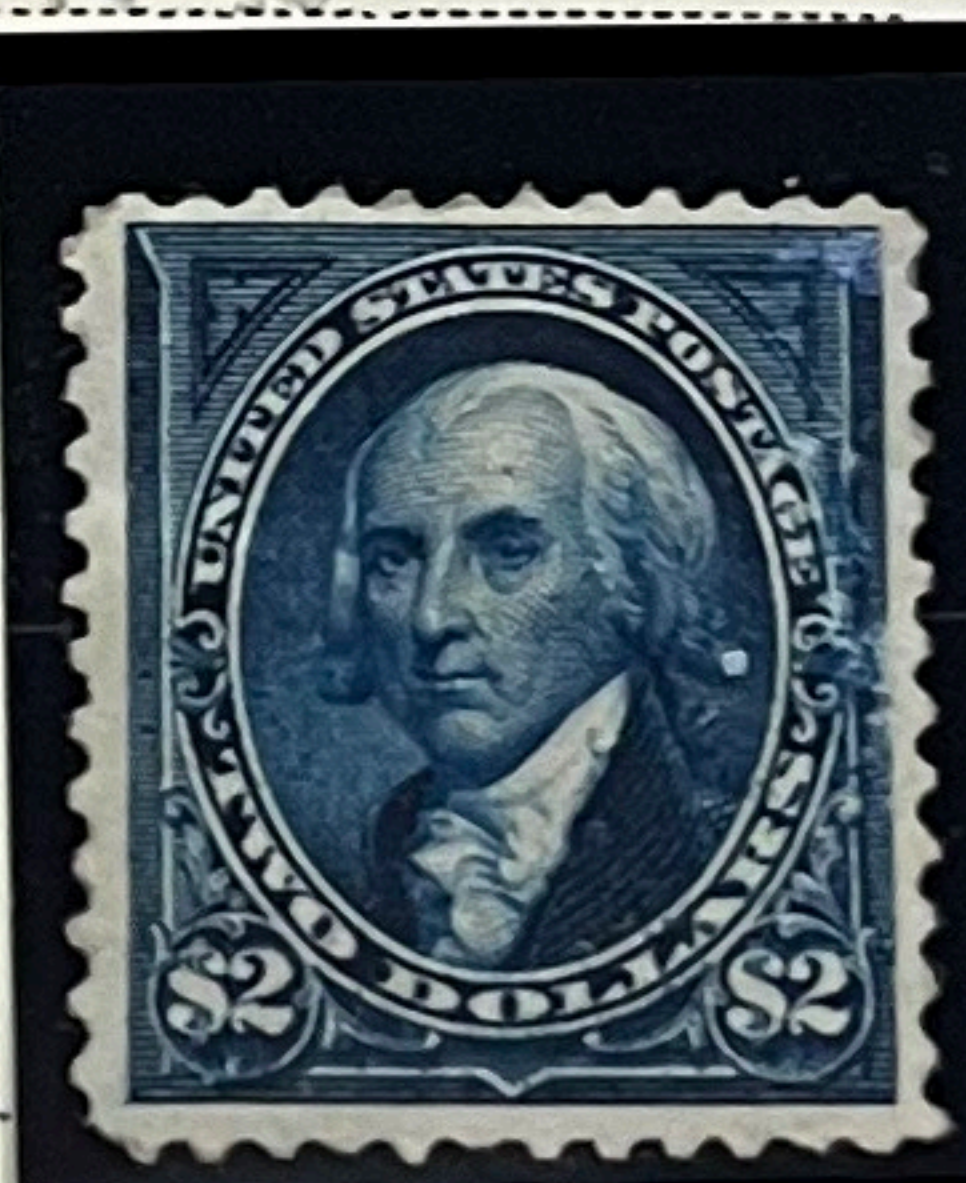
2600-  
1900-

900-  
585-

60

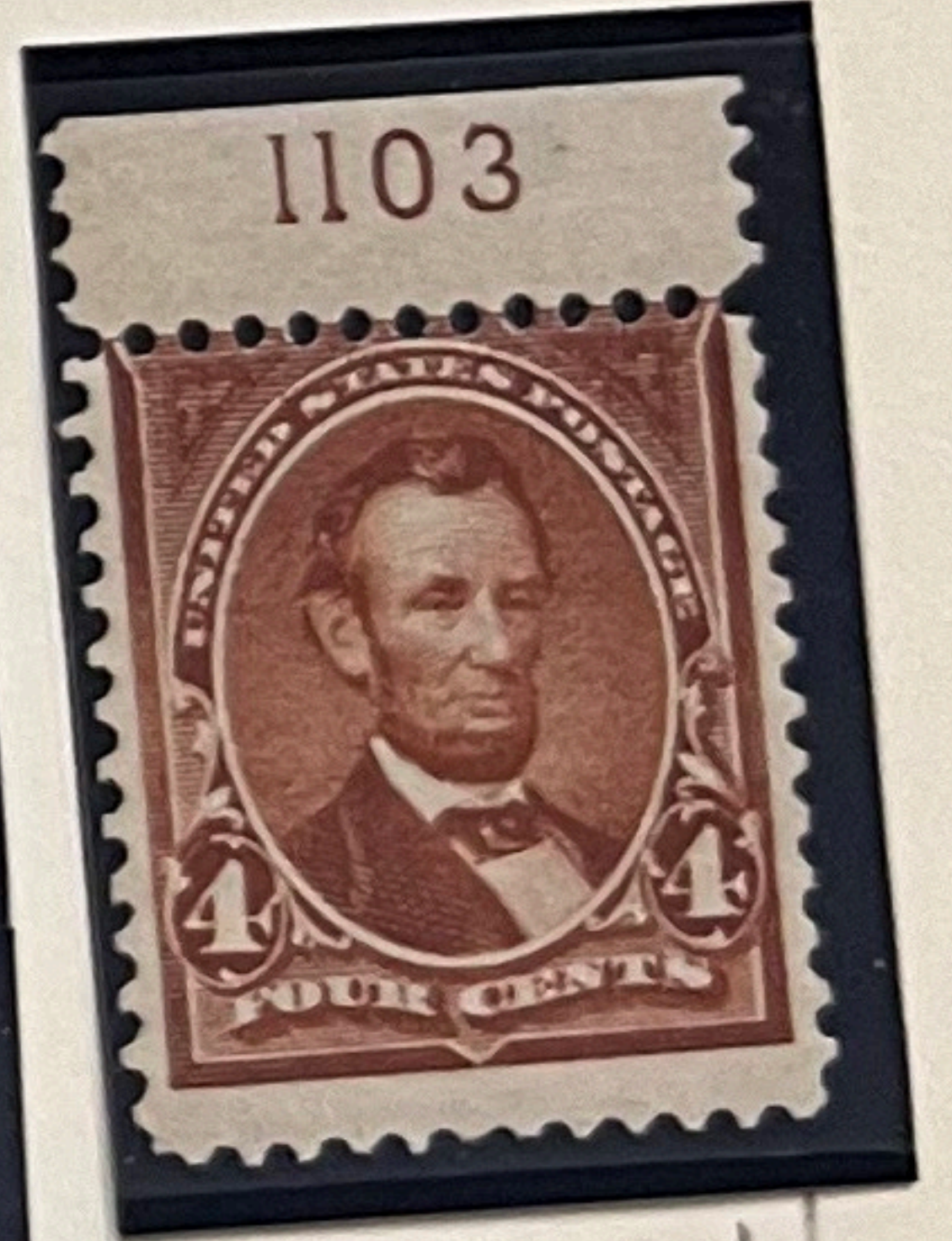
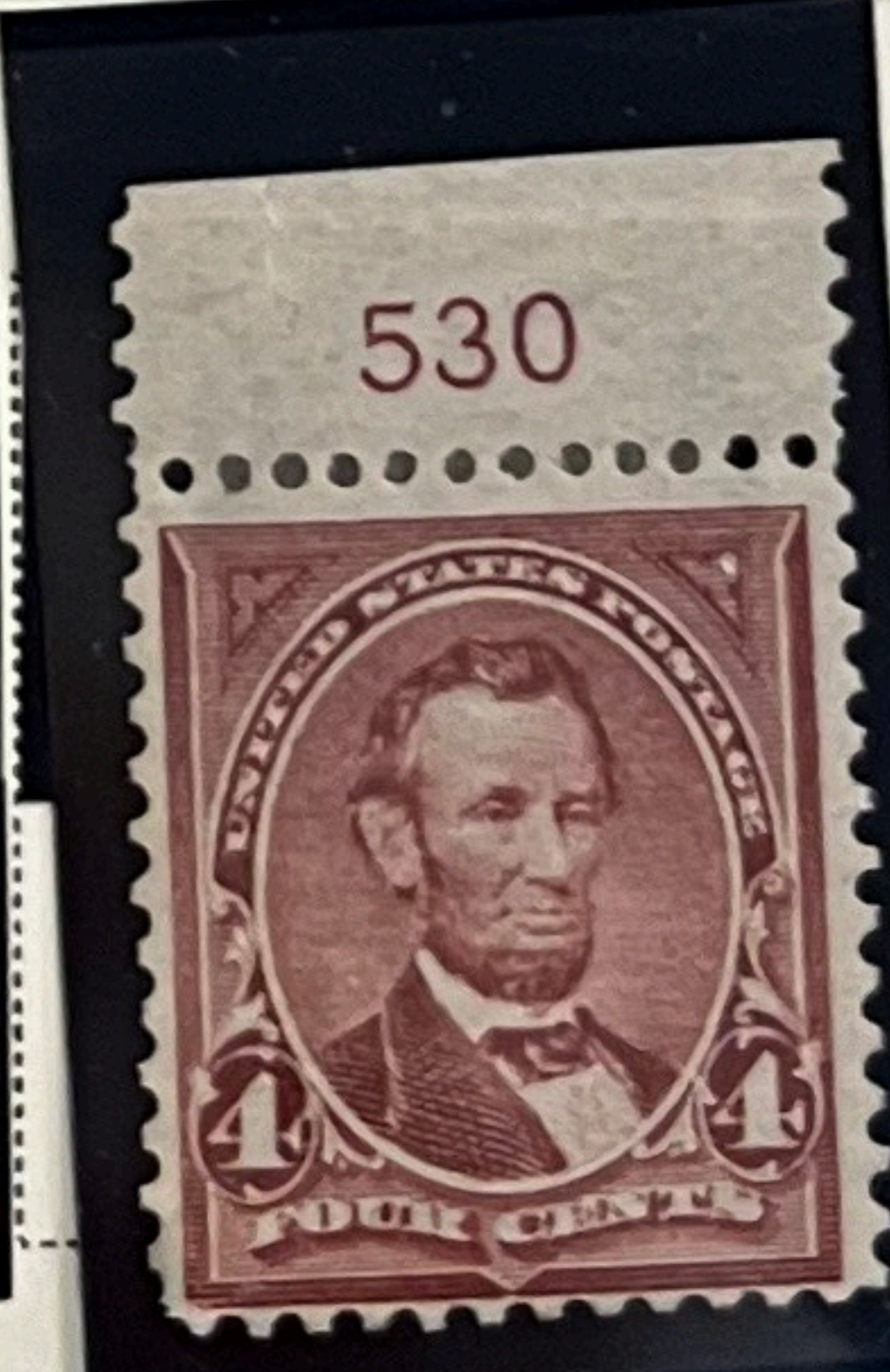
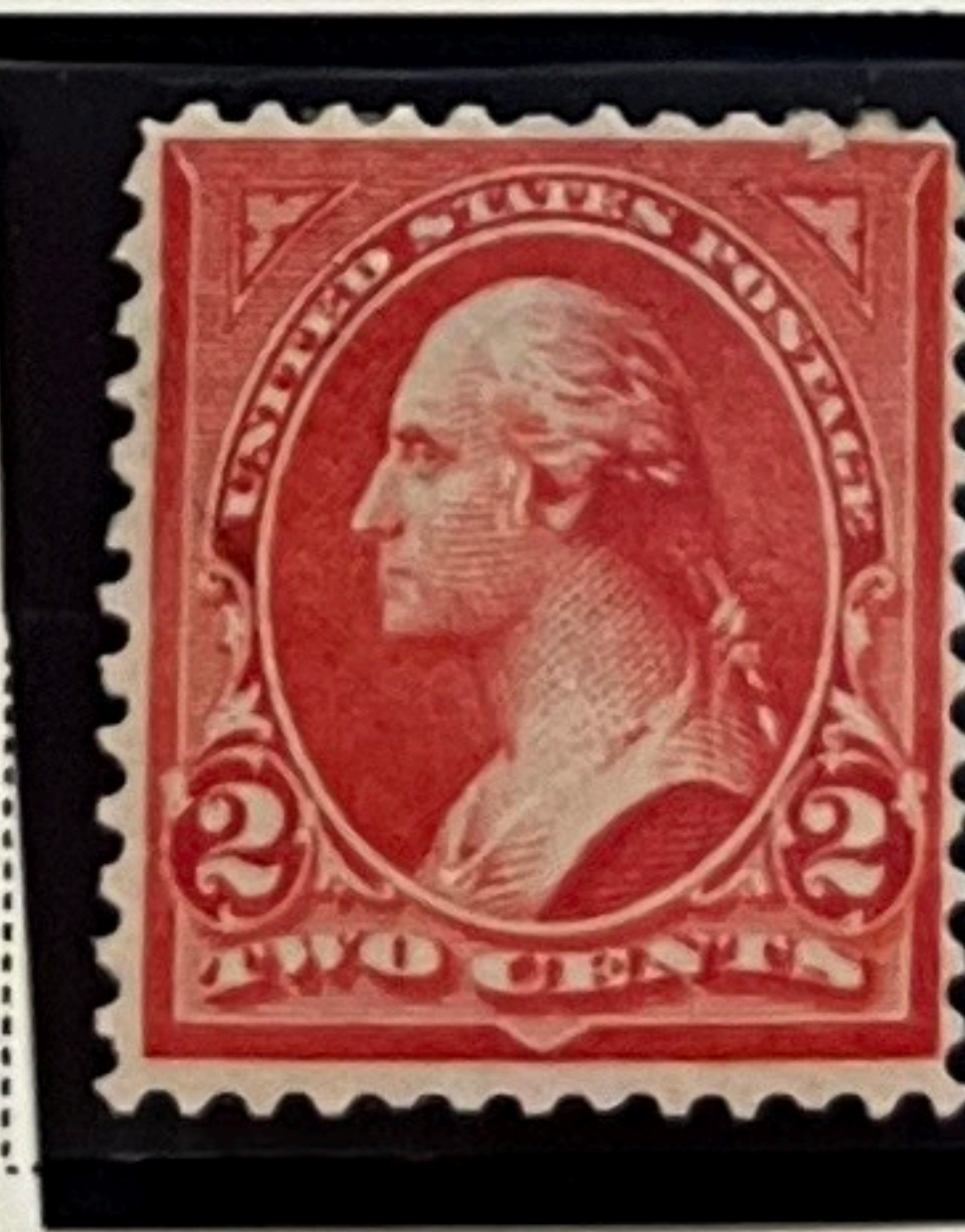
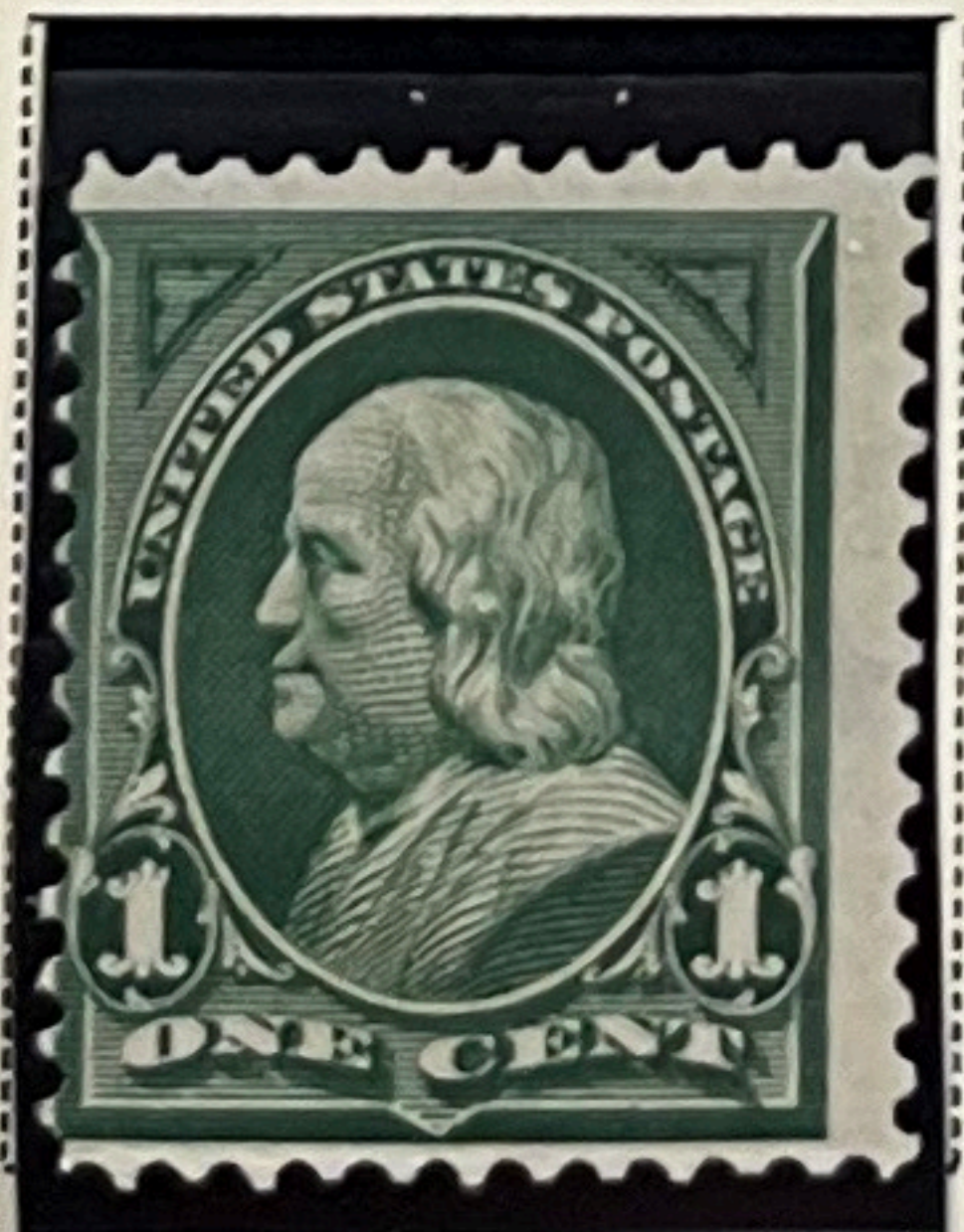
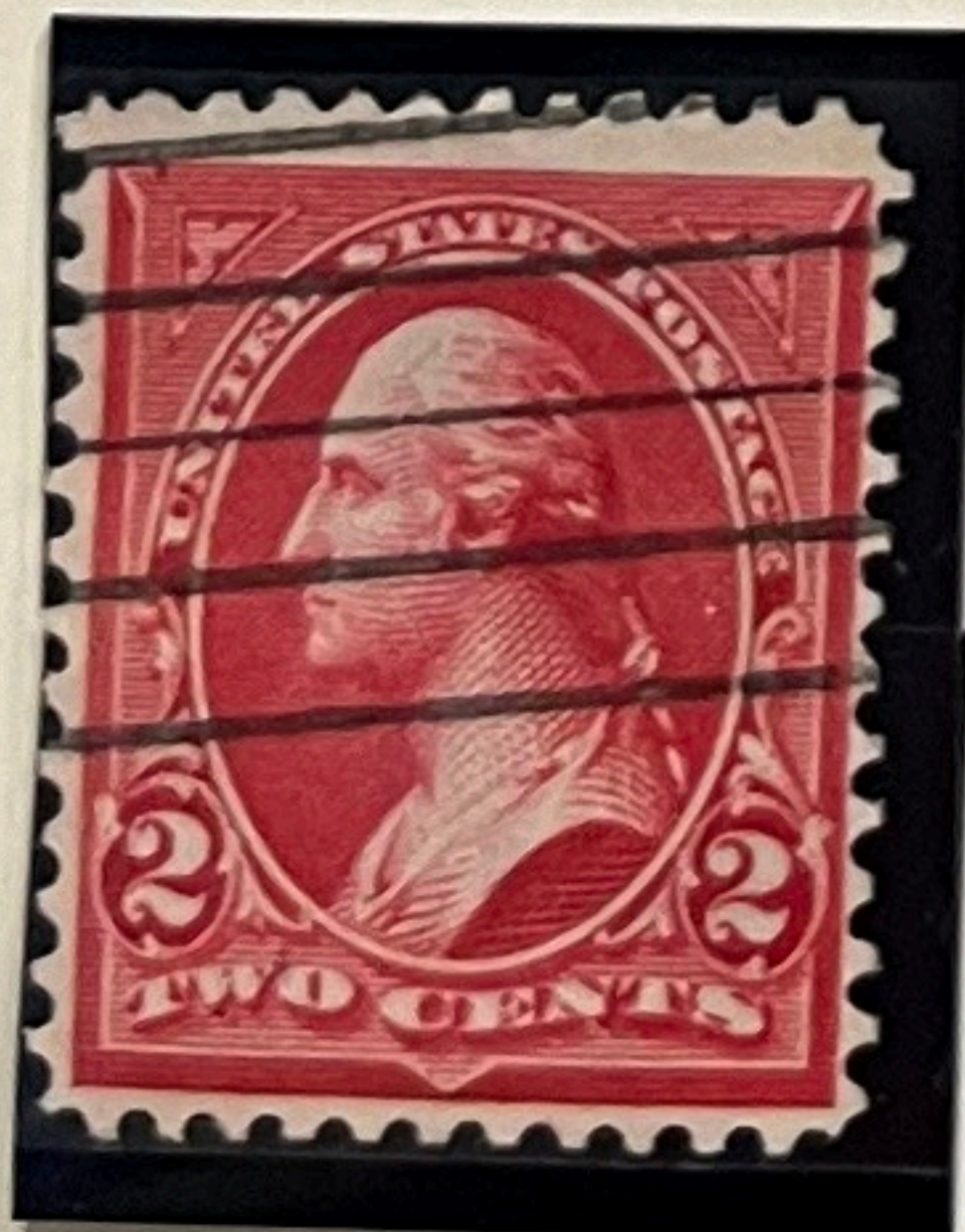


267a NH

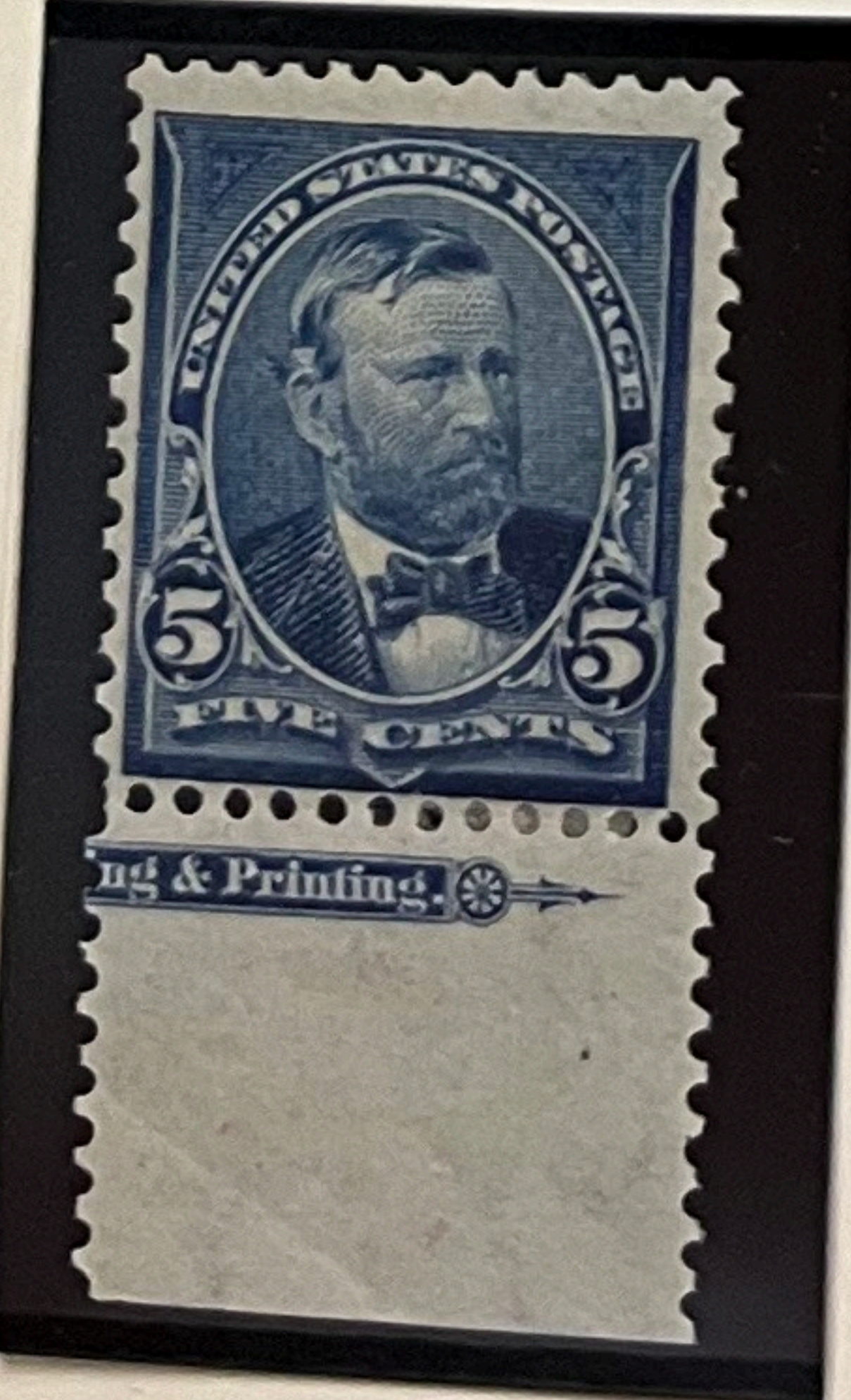


NG/DG

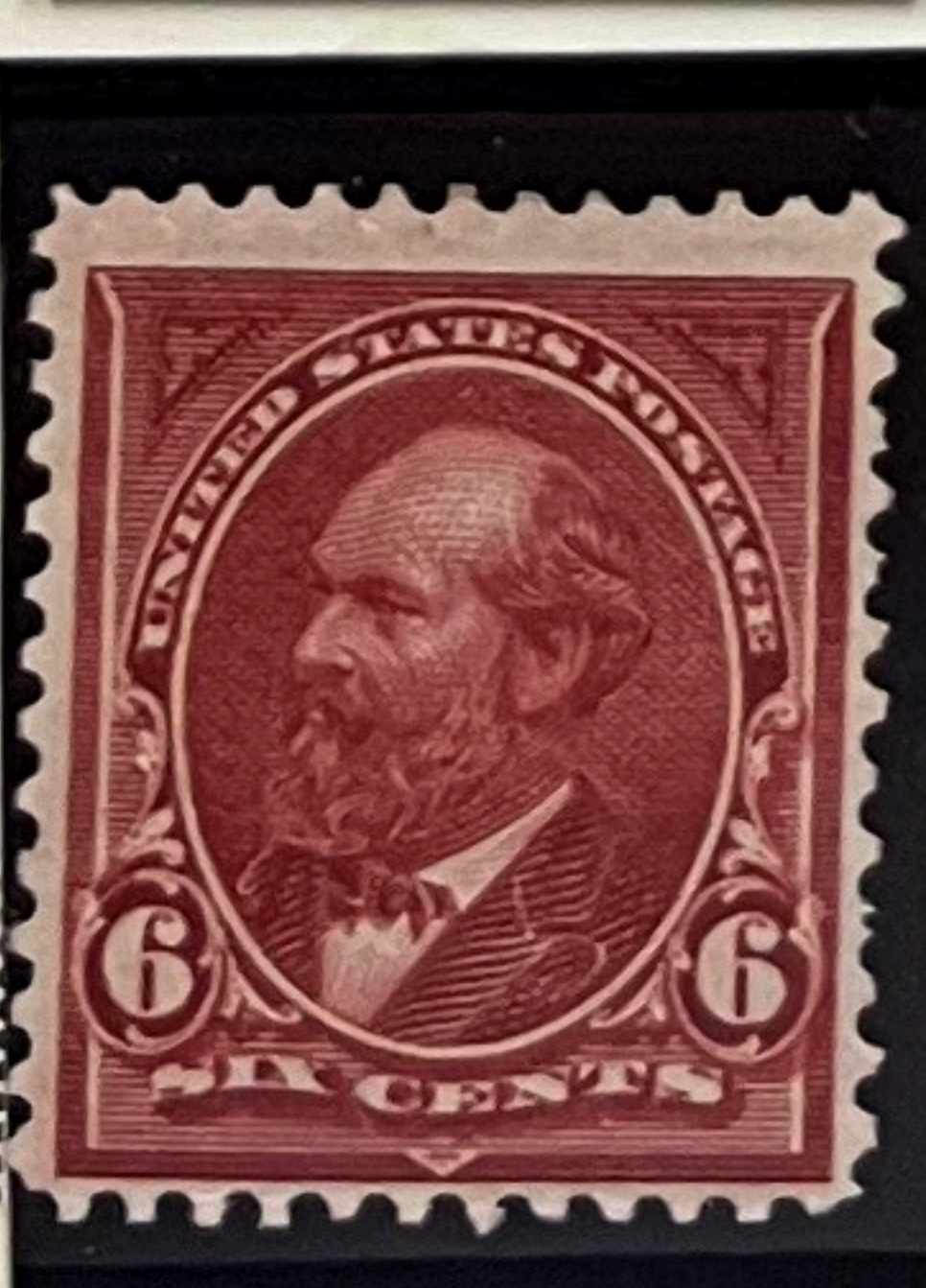
1898 DG



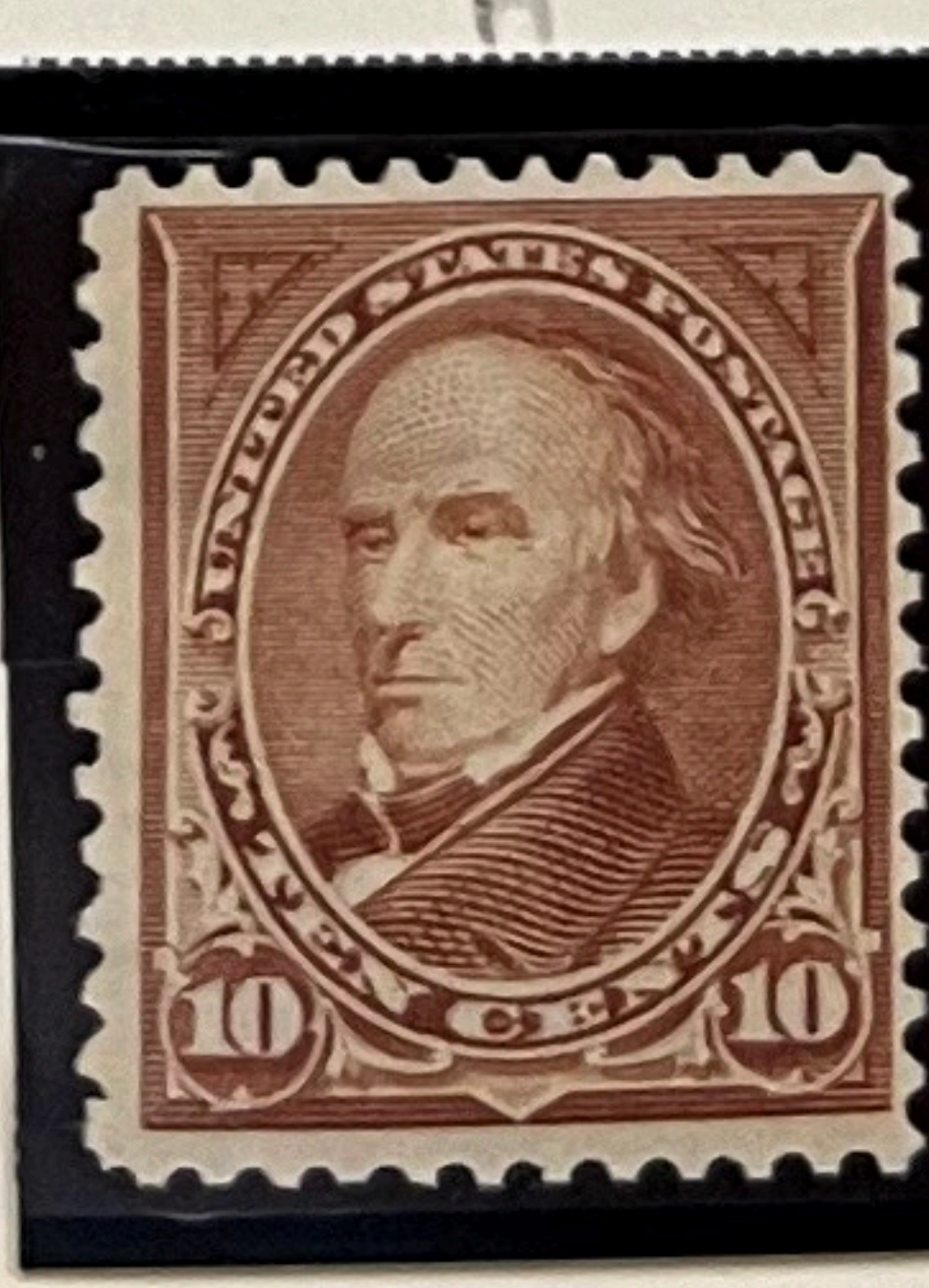
280b H



HR

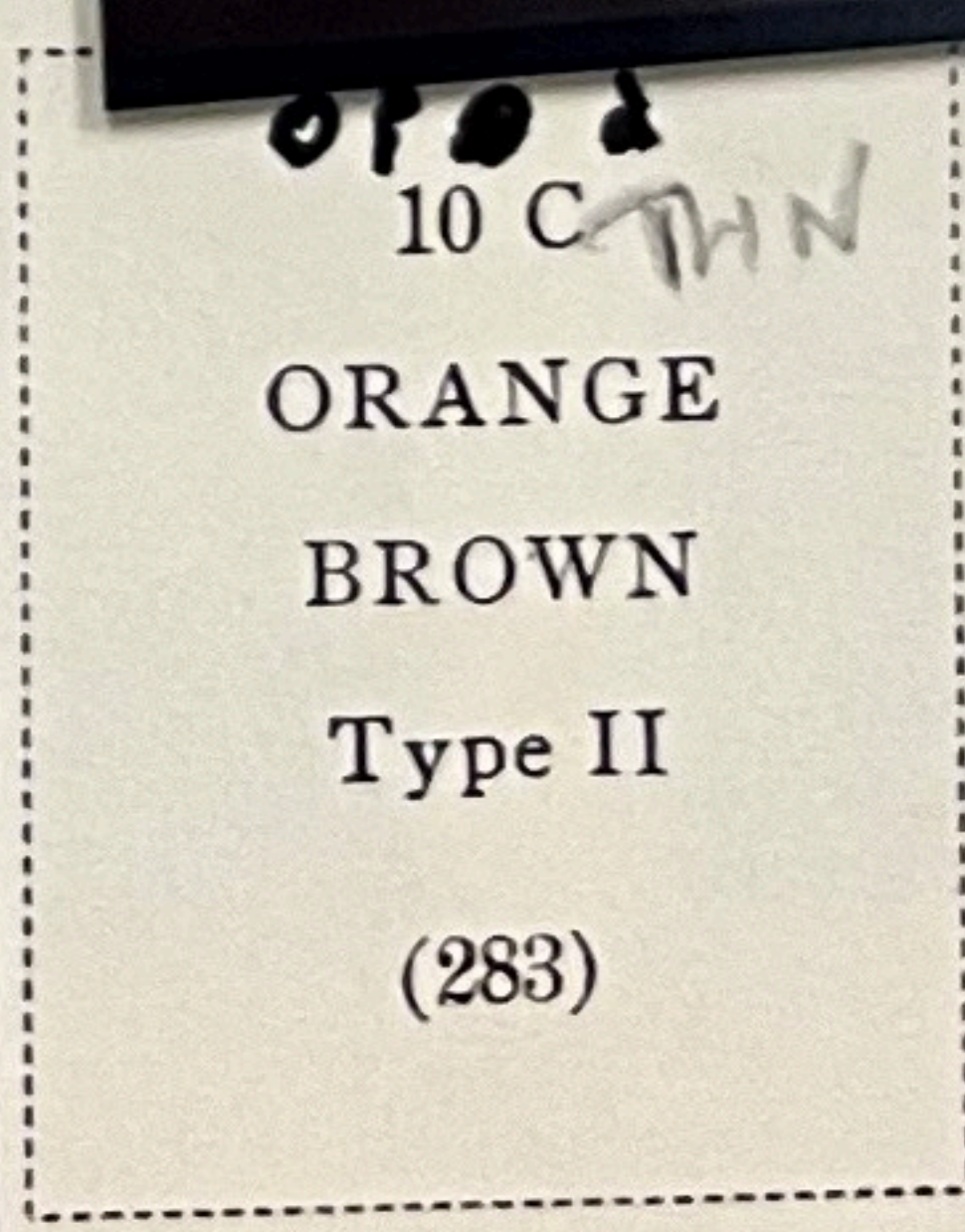


H

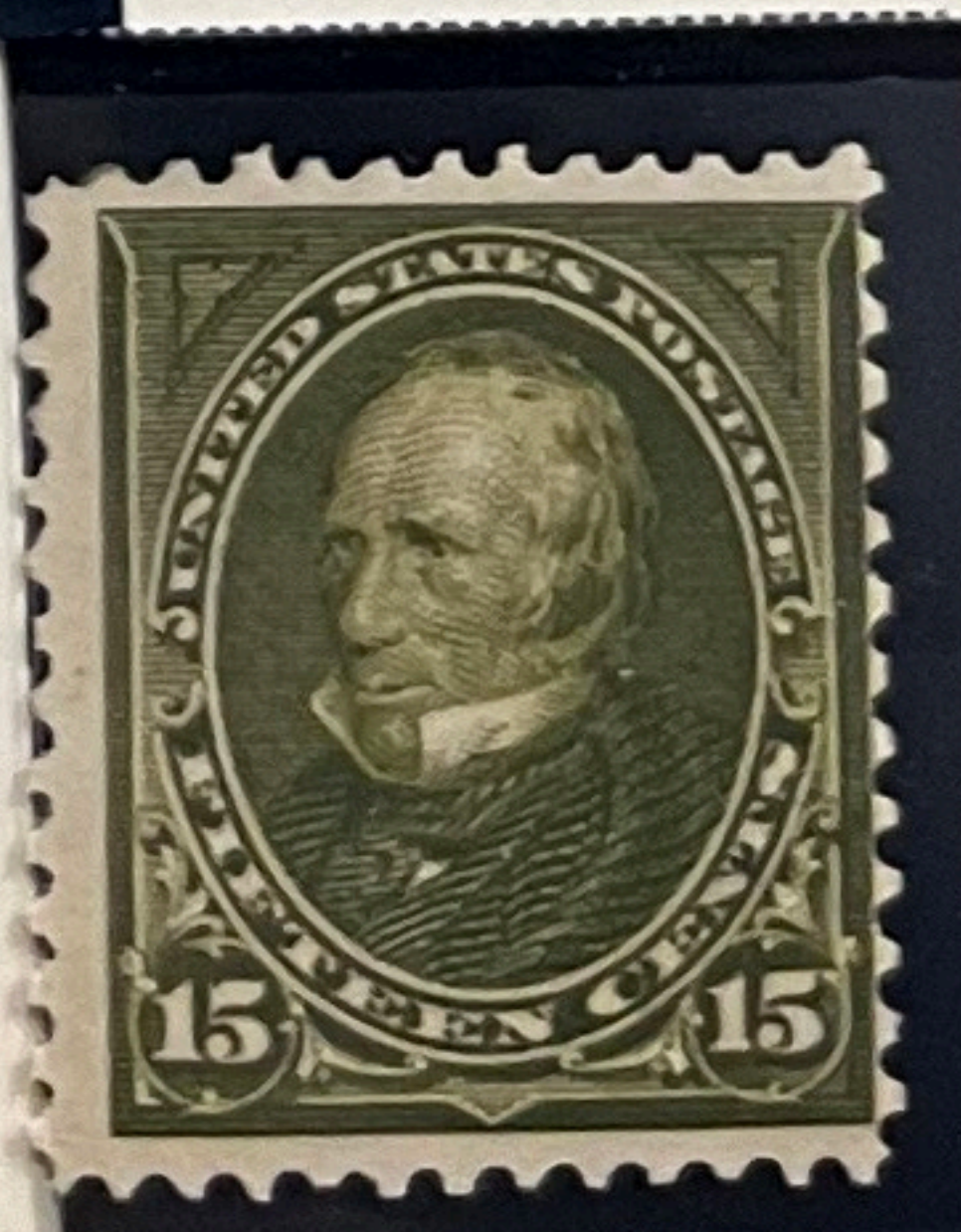


H

TYPE I



0102  
10 C THN  
ORANGE  
BROWN  
Type II  
(283)



H



HR  
TYPE II



POSTAGE

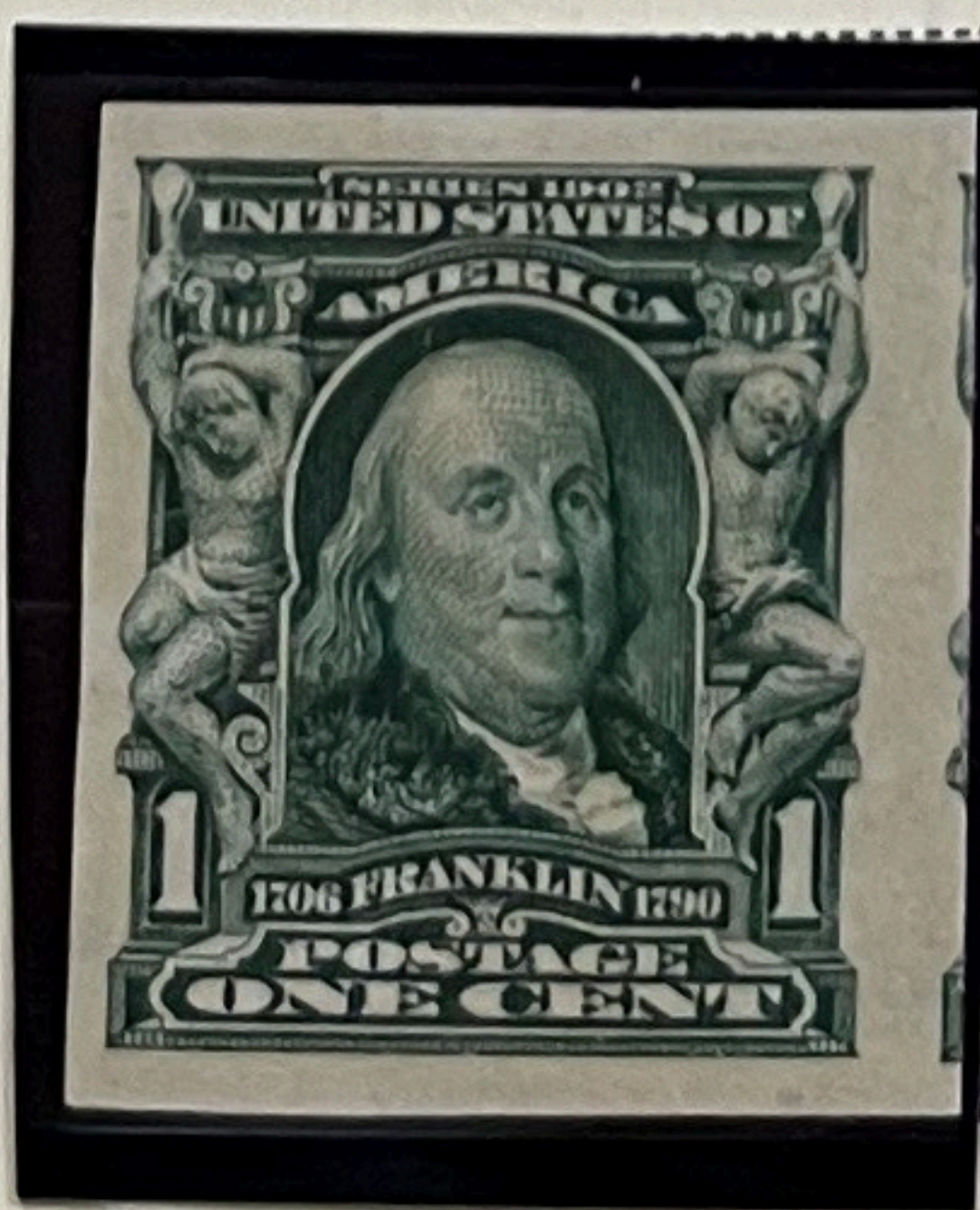
Watermarked USPS

1902-03



1906-08

Imperforate



5 C  
BLUE

(315)

1903-06





# POSTAGE

Watermarked USPS

1904

## Louisiana Purchase Exposition Issue



1907

## Jamestown Exposition Issue



1908-09

Perforated 12





# POSTAGE

Watermarked **USPS**

1908-09

Imperforate



## COIL STAMPS

1908-10

Perforated 12 Horizontally



1909

Perforated 12 Vertically



10 C  
YELLOW

(356)



# POSTAGE

Flat Plate Printing  
Unwatermarked  
1917-19  
Perforated 11



501B



502A





# POSTAGE

Battle of White Plains Issue  
International Philatelic Exhibition  
October 16th to 23rd, 1926  
New York, N. Y.

INTERNATIONAL PHILATELIC EXHIBITION, OCT. 16<sup>TH</sup> TO 23<sup>RD</sup> 1926

18771



18771

18771

18771

NEW

YORK

N.Y.

U.S.A.



# POSTAGE

Unwatermarked

1929

## Electric Light Golden Jubilee Issue

Flat Plate Printing

Perforated 11



Rotary Press Printing

Perforated 11x10½



Rotary Press Coil Stamp

Perforated 10 Vertically



Flat Plate Printing

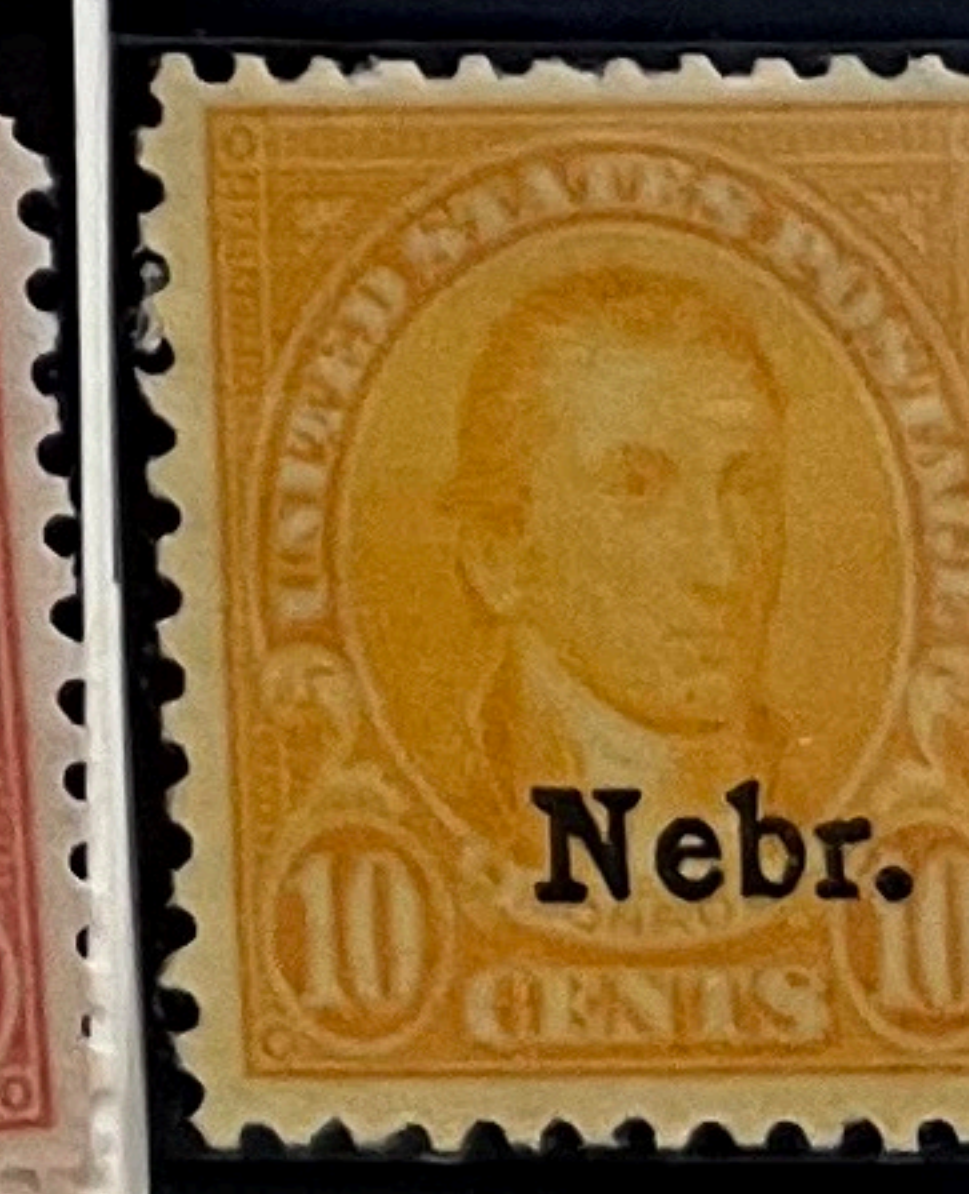
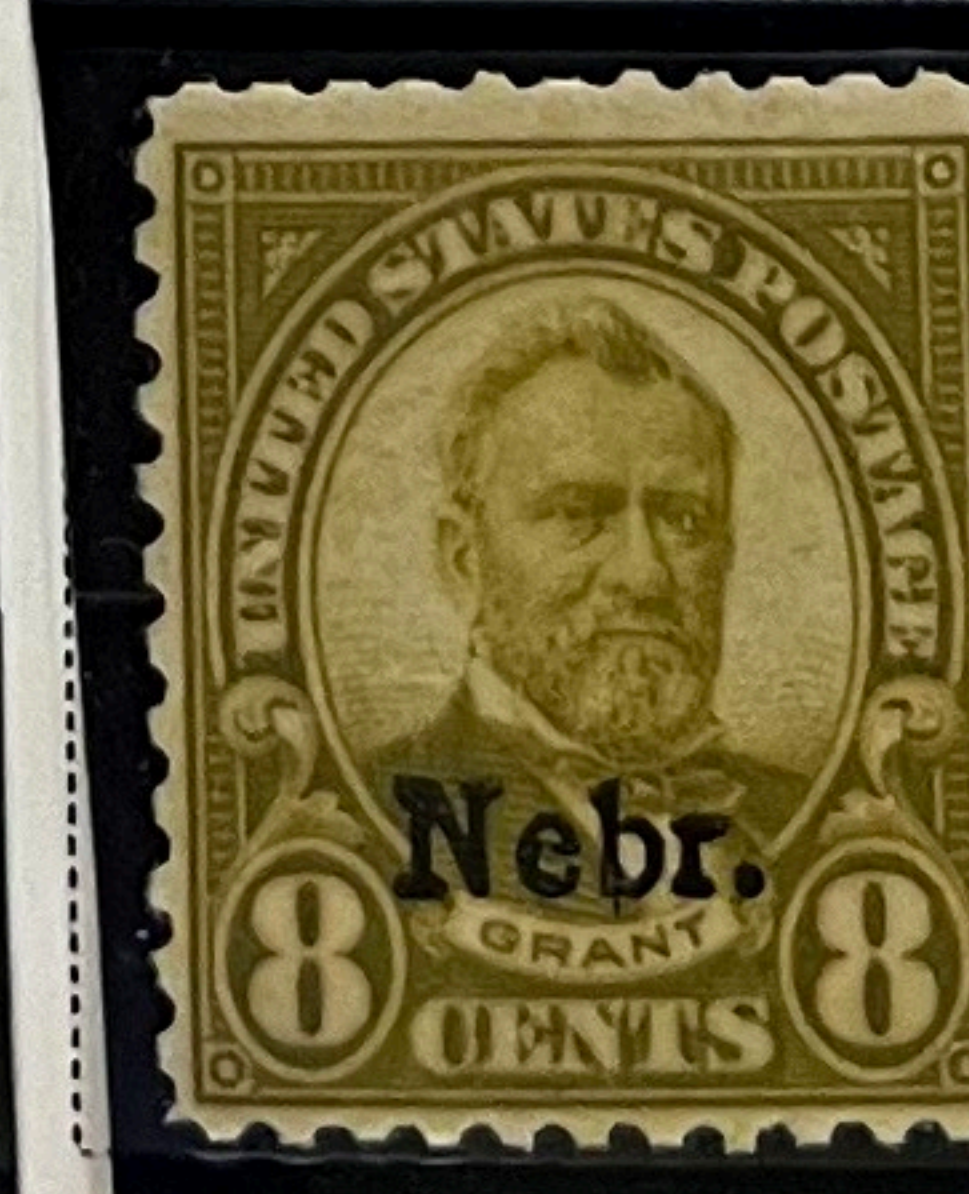
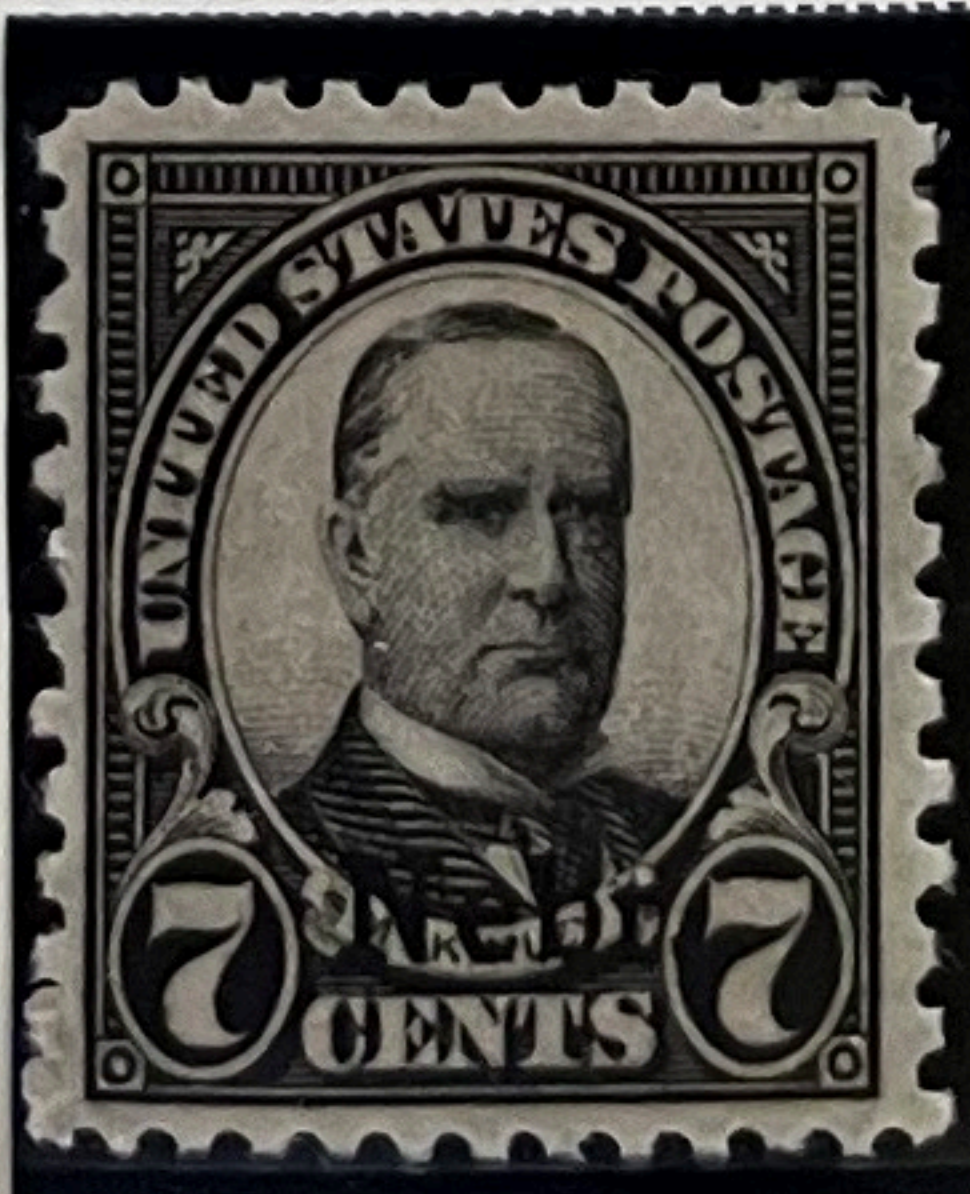
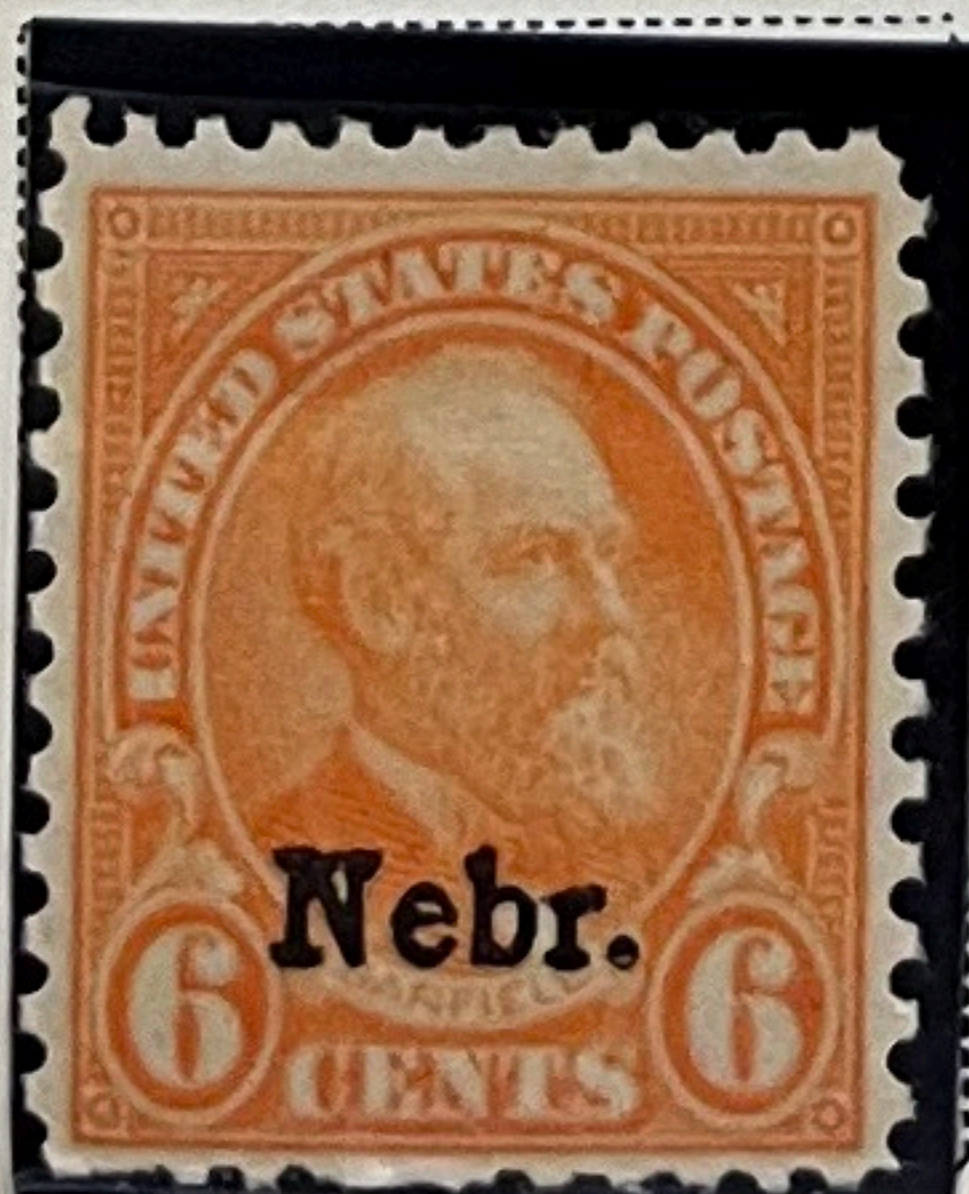
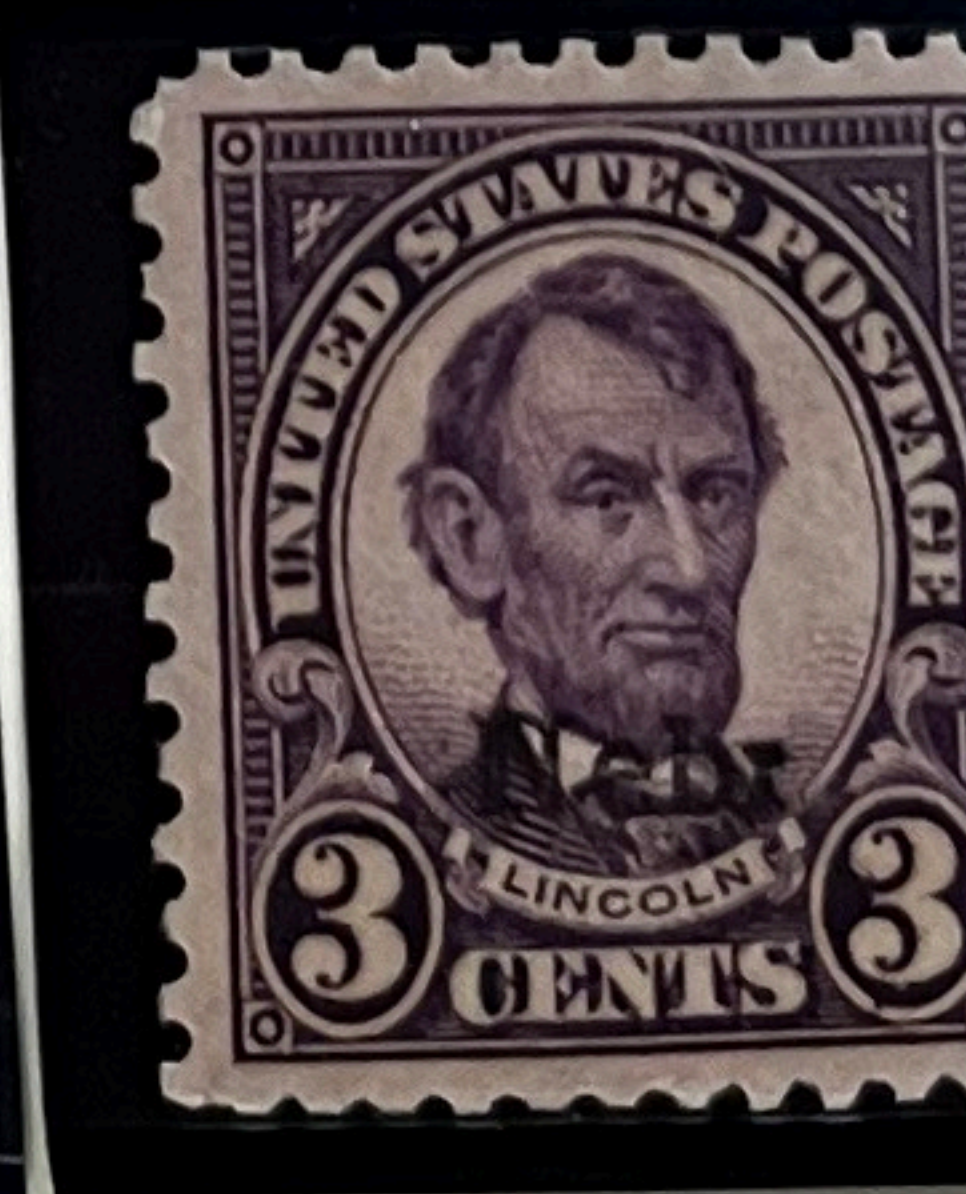
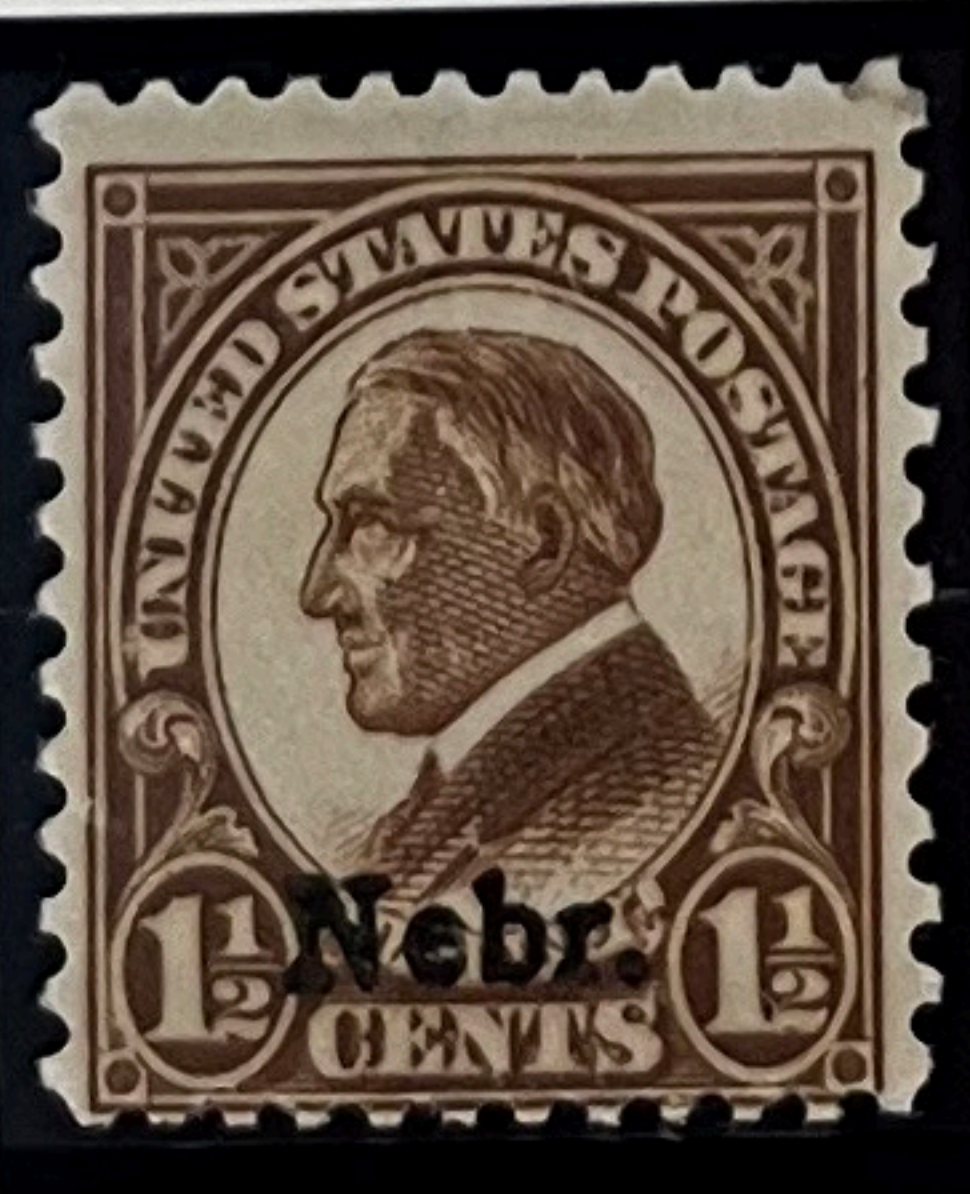
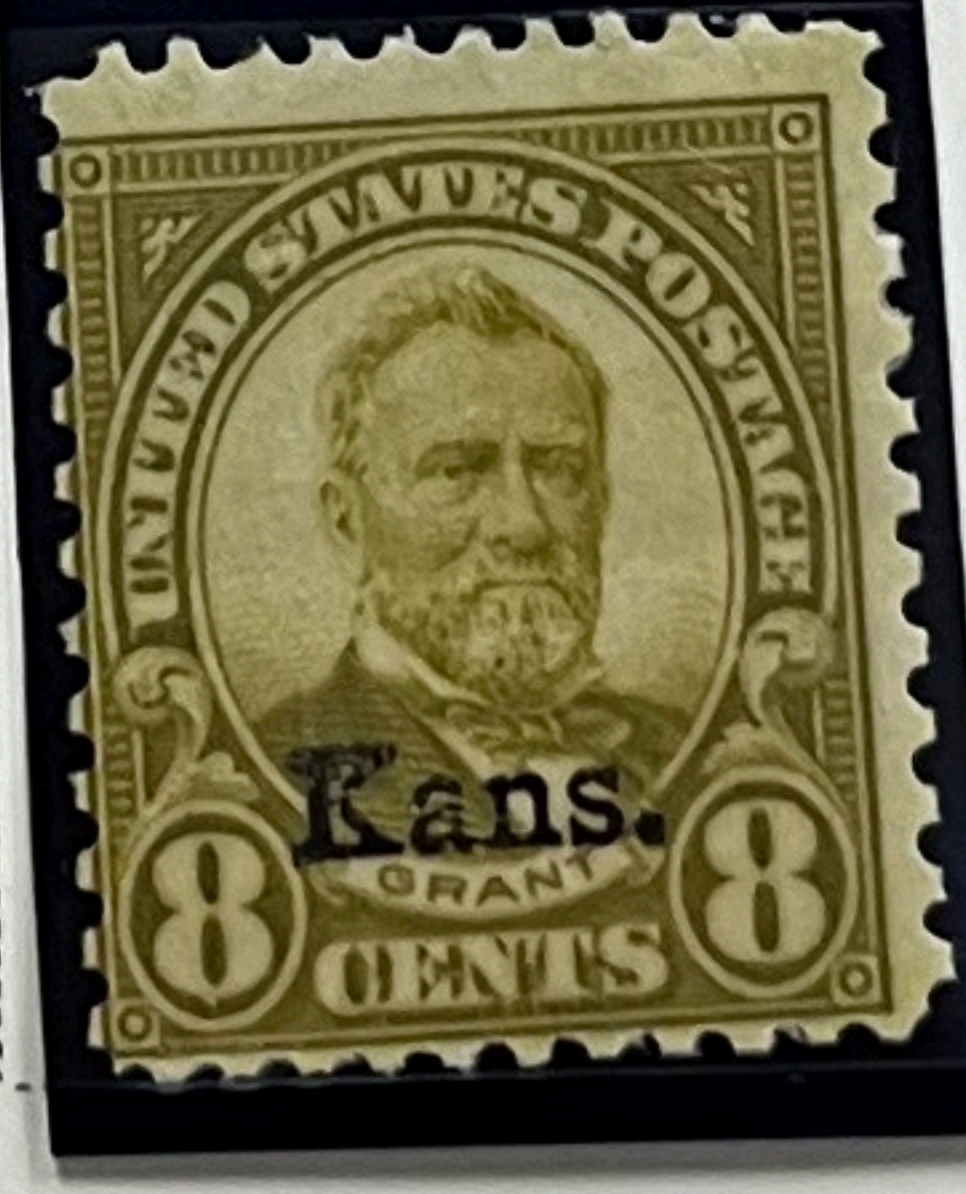
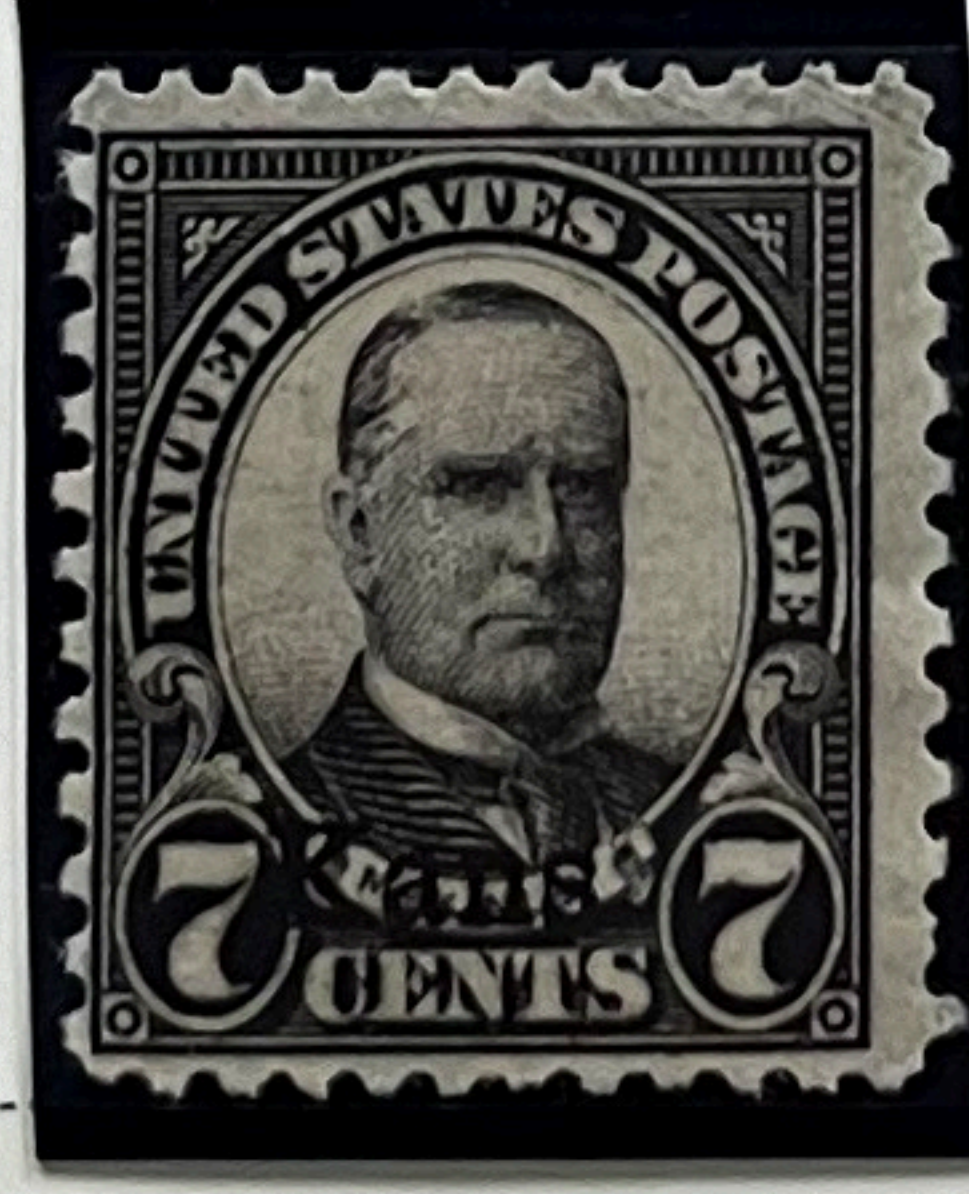
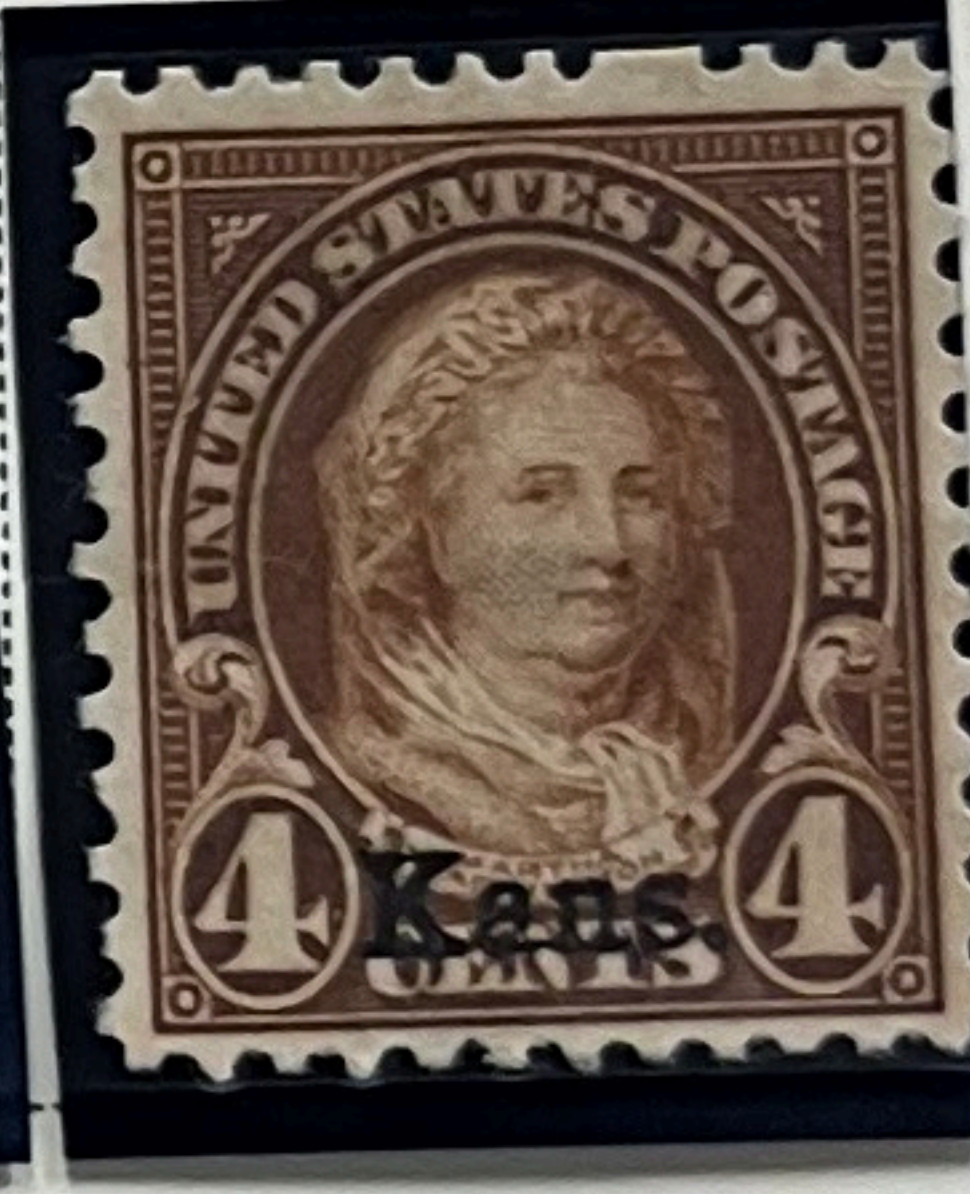
Perforated 11

## Sullivan Expedition Issue



Rotary Press Printing

Perforated 11x10½





# RYUKYU ISLANDS

Watermarked Curved Wavy Lines

1948

First Printing



1949

Second Printing



Unwatermarked

1950





# RYUKYU ISLANDS

## AIR POST STAMPS

1950



1951-54



1957



1960

