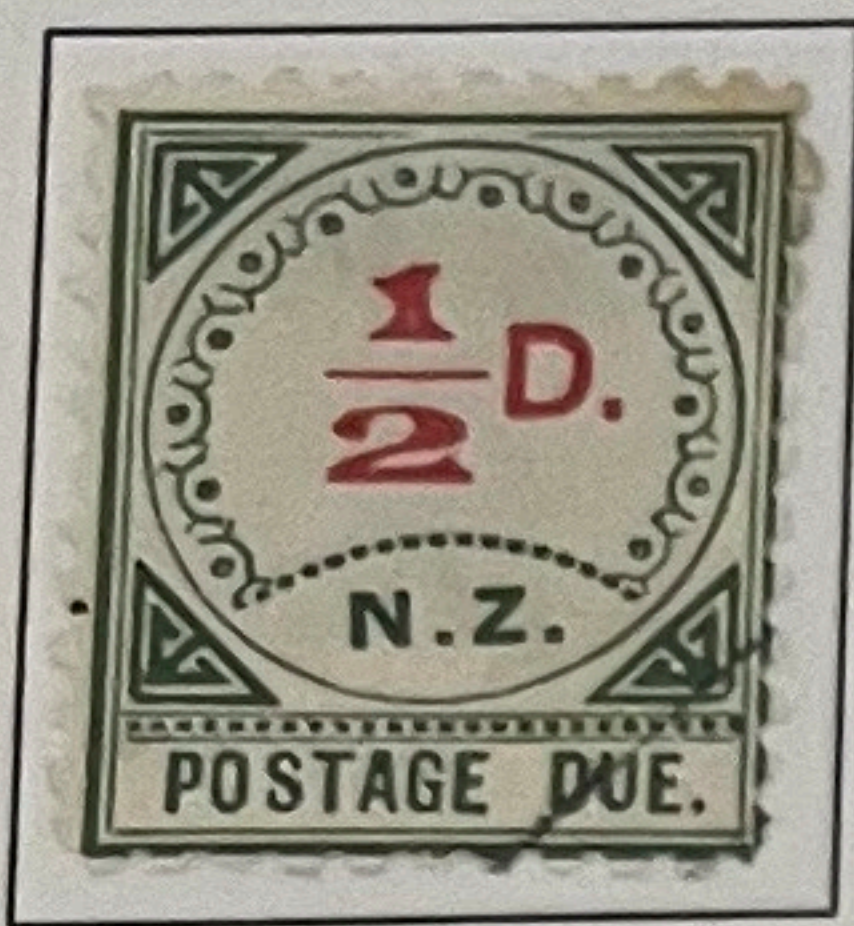


First Issue Postage Dues

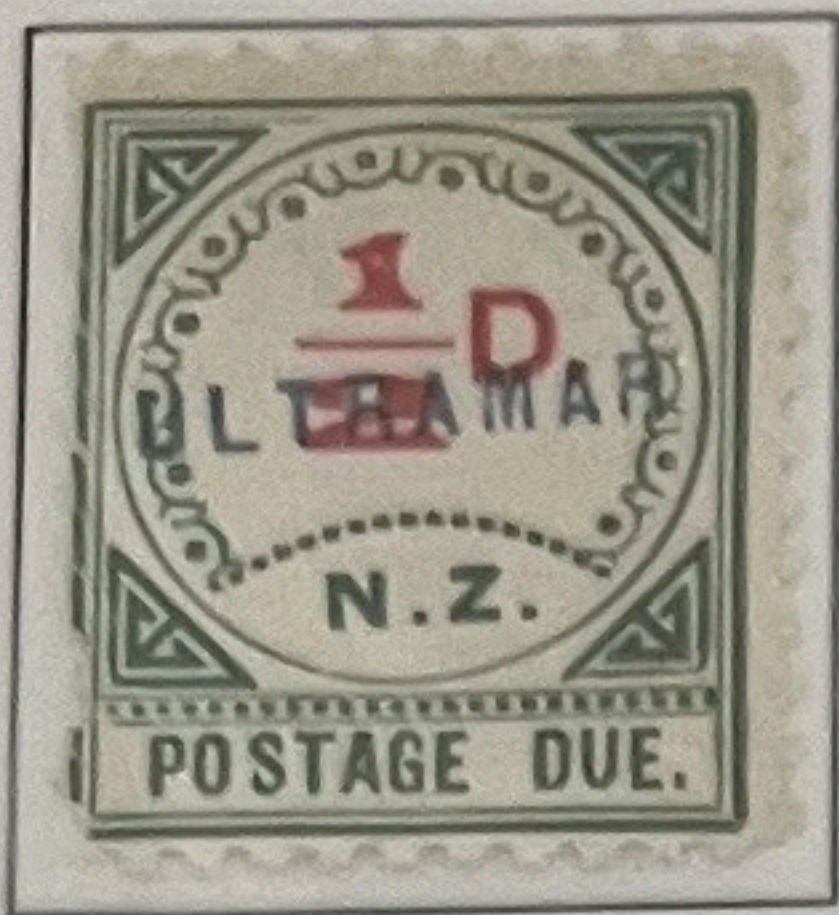
1 December 1899

1/2d (large "D")

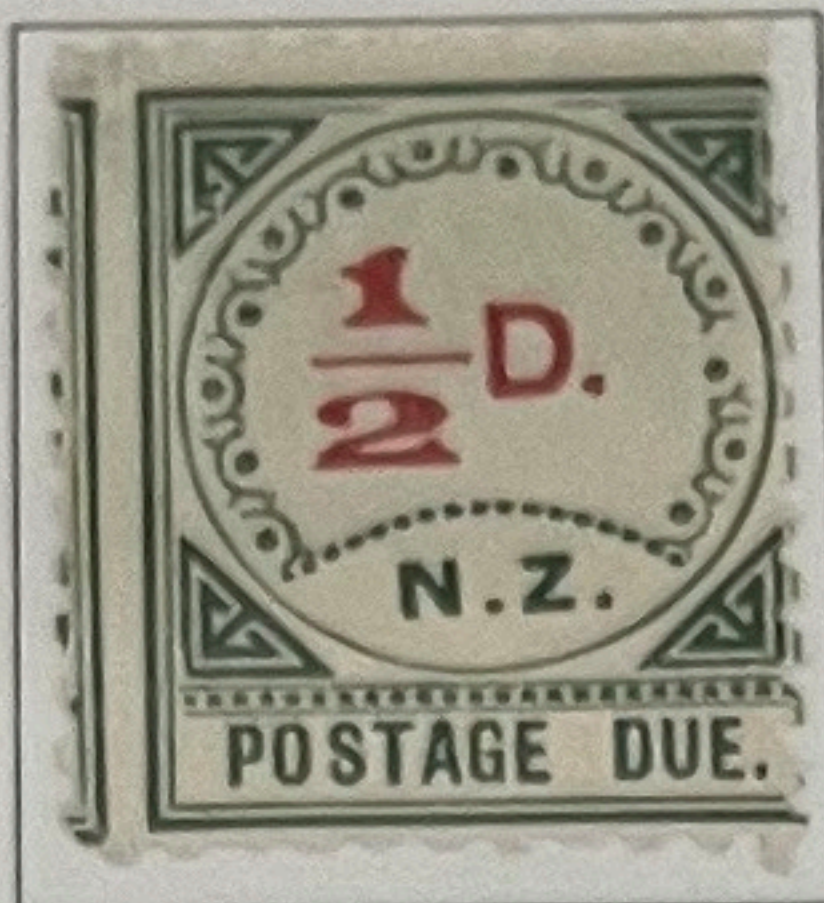
Perf. 11
NZ and Star Watermark
Wide frame (Type I)



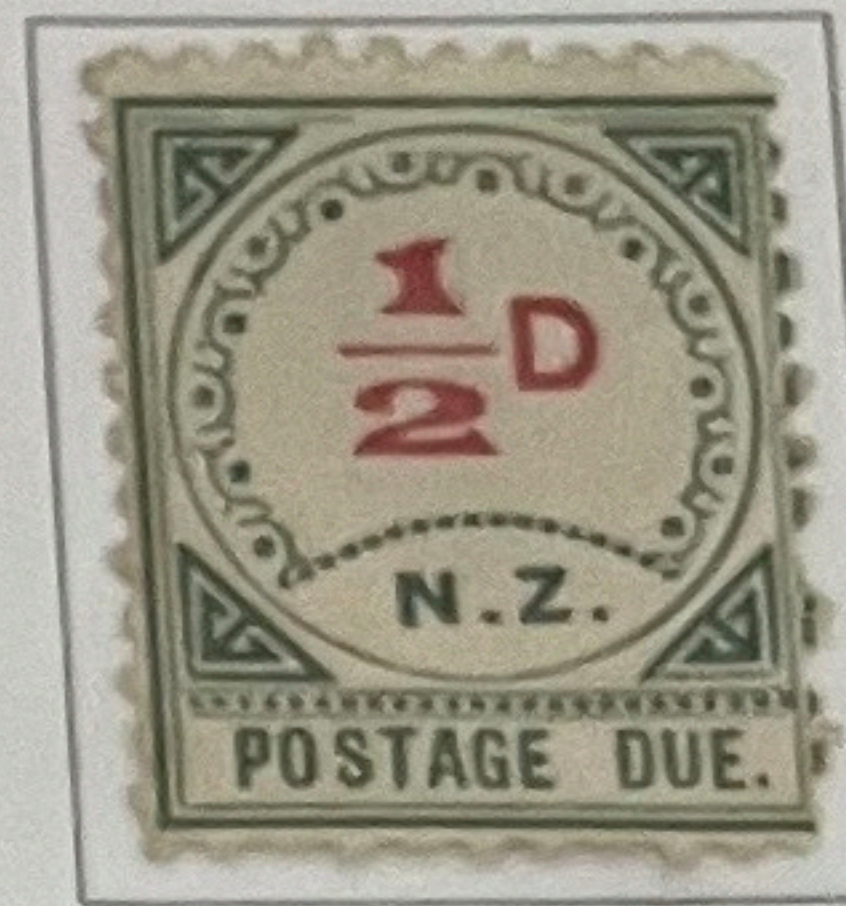
Presentation copy



UPU "Ultramar"



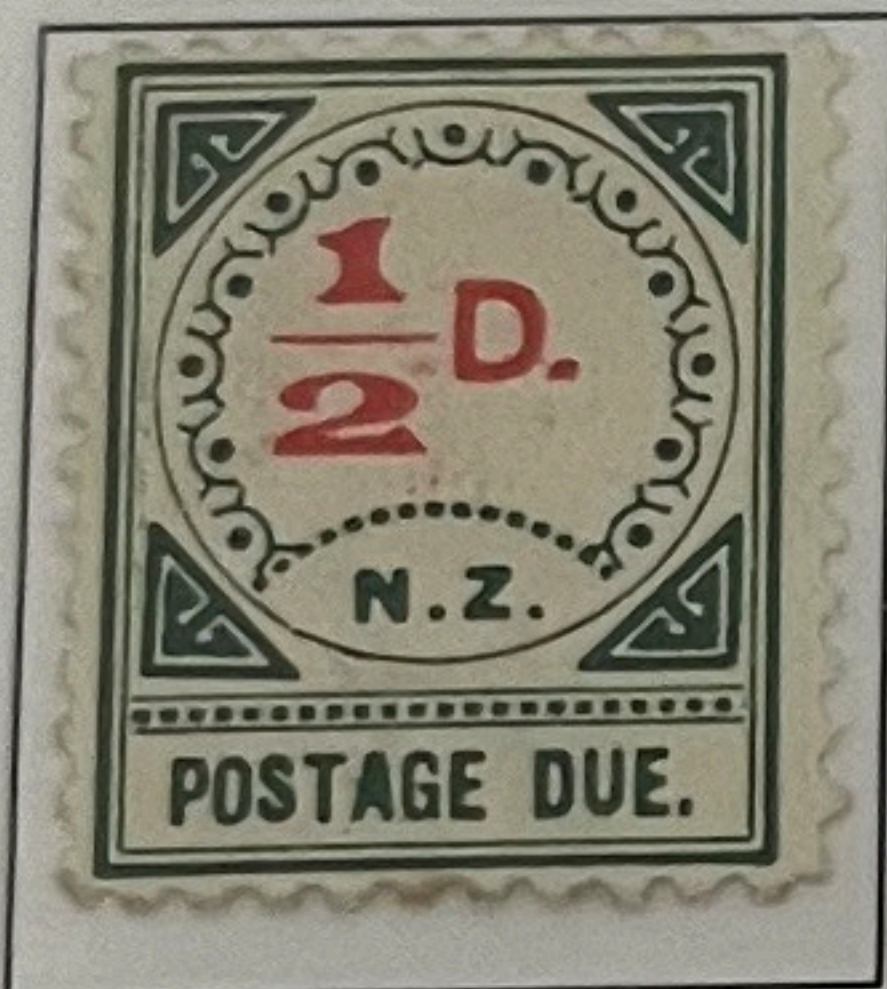
Used Dunedin
1899



No stop after "D"
R. pane, Row 2/3

1/2d (large "D")

Narrow frame (Type II)



Used June 1903



Misplaced value



No stop after "N"
BR pane, Row 10/1



No stop after "D"
R pane, Row 2/3

Presentation copies were made of each denomination, but not necessarily of each type, and had two black diagonal lines printed at the lower right corner. The UPU copies that went to Portugal received a handstamp that said "Ultramar" (overseas) and eventually were sold, and again are found on each denomination.

Both frame types of the 1/2d stamp were on issue concurrently. The 1/2d value was required chiefly for use on Government correspondence where only the actual amount of deficient postage was collected. No single use on cover has been found.

First Issue Postage Dues
1 December 1899
1/2d (large "D")

Perf. 11
NZ and Star Watermark
Narrow frame (Type II)



First Issue Postage Dues
1 December 1899
1d (large "D")

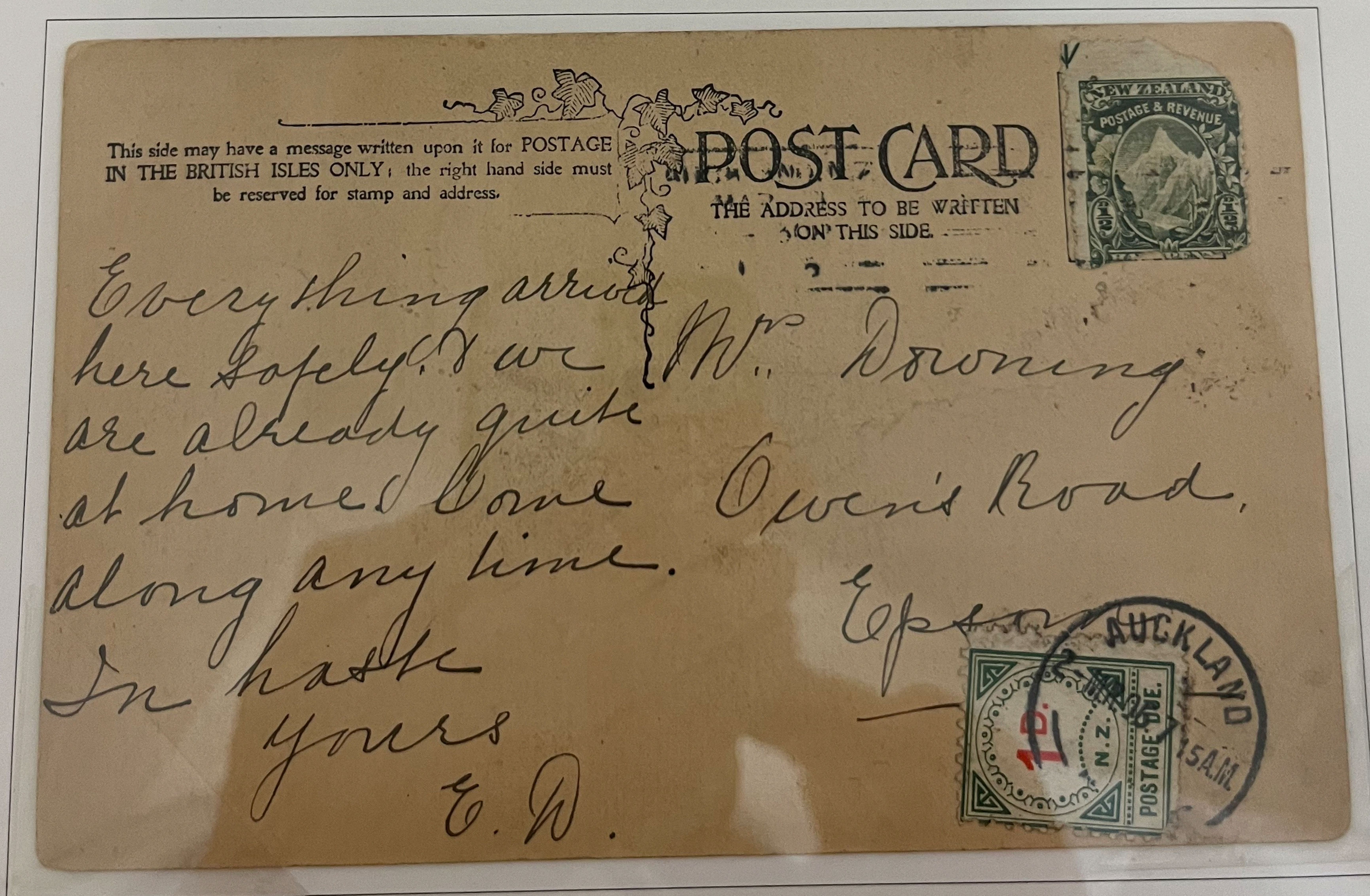
Perf. 11
NZ and Star Watermark
Narrow frame (Type II)



Presentation copy



No Stop after N at left
R pane, Row 10/1



1d postage due charged at Auckland, 2 March 1906.

First Issue Postage Dues
1 December 1899
1d (large "D")

Perf. 11
NZ and Star Watermark
Narrow frame (Type II)



First Issue Postage Dues
1 December 1899
1d (small "D")

Perf. 11
NZ and Star Watermark
Narrow frame (Type II)



UPU "Ultramar"



Waiiau, 11 Jan 04



If stamps fell off during their transit in the mail, and it might have been obvious that something had been in place, it was a judgement call whether to charge postage due or not. This local use in Dunedin fell into the category of the former.

First Issue Postage Dues
1 December 1899
1d (small "D")

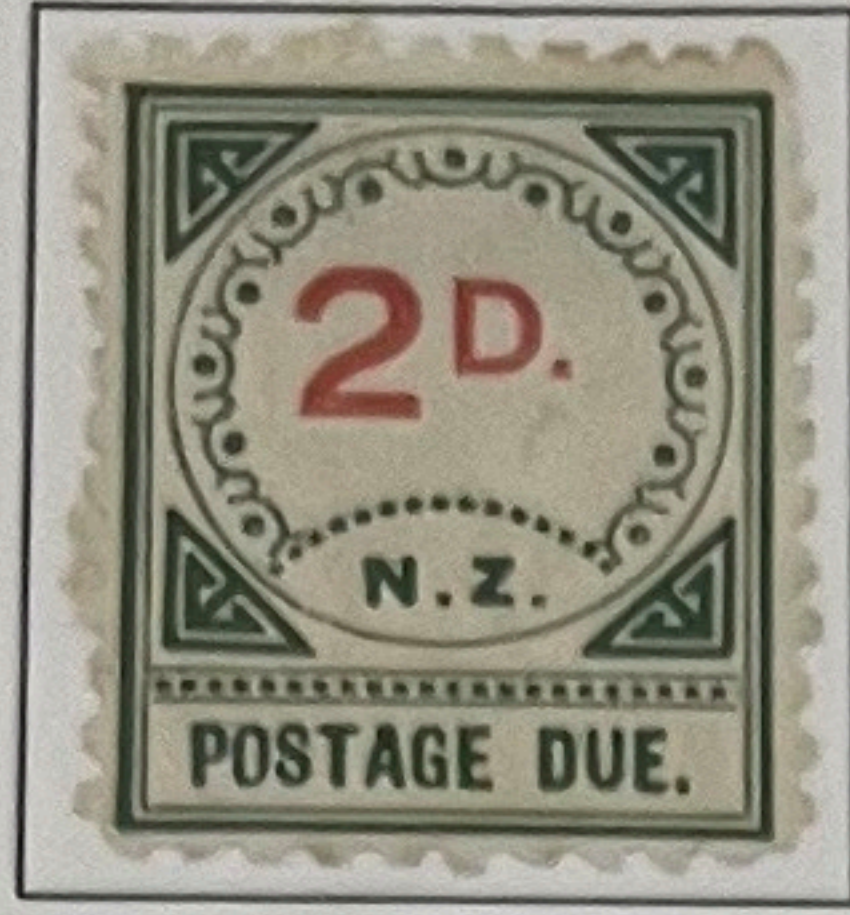
Perf. 11
NZ and Star Watermark
Narrow frame (Type II)



Two cards, one with the double deficiency circle and the other without, both with the small "D" and dated 1905. The upper card is apparently a part of the Esperanto movement, while the lower card bears the message on reverse "Please send the things I left."

First Issue Postage Dues
 1 December 1899
 2d (large "D")

Perf. 11
 NZ and Star Watermark
 Narrow frame (Type II)



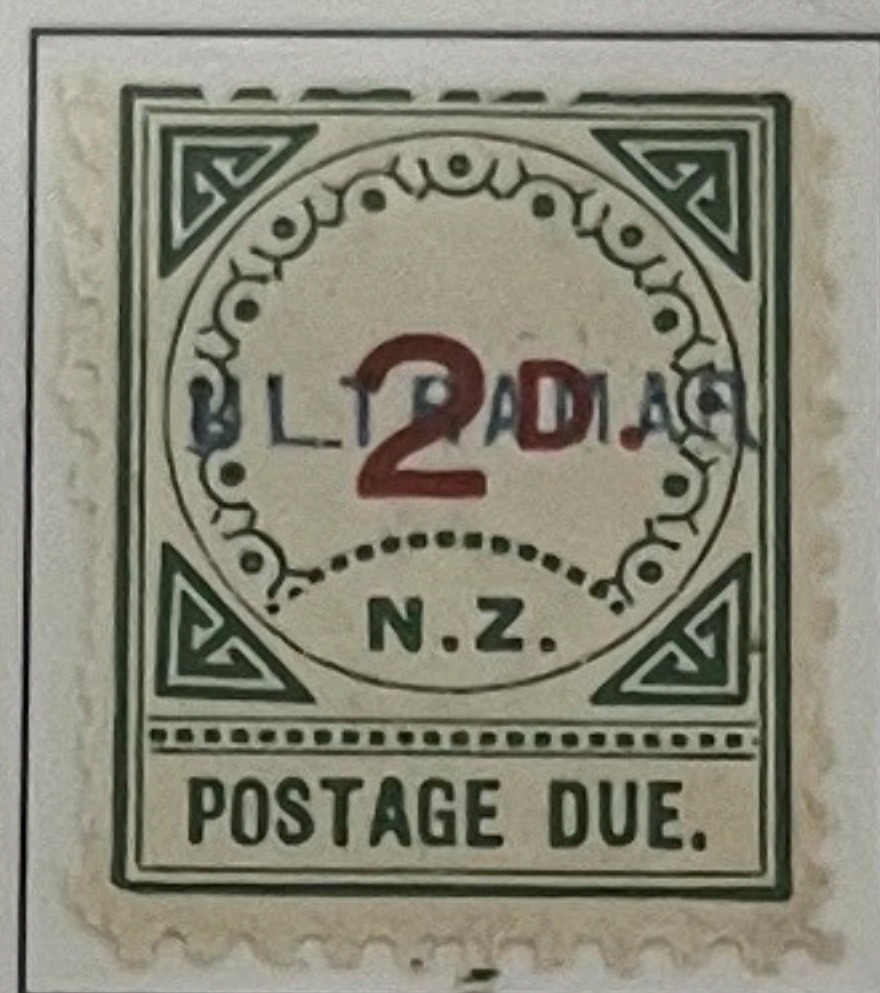
Used Auckland
 Feb 1900

2d (small "D")

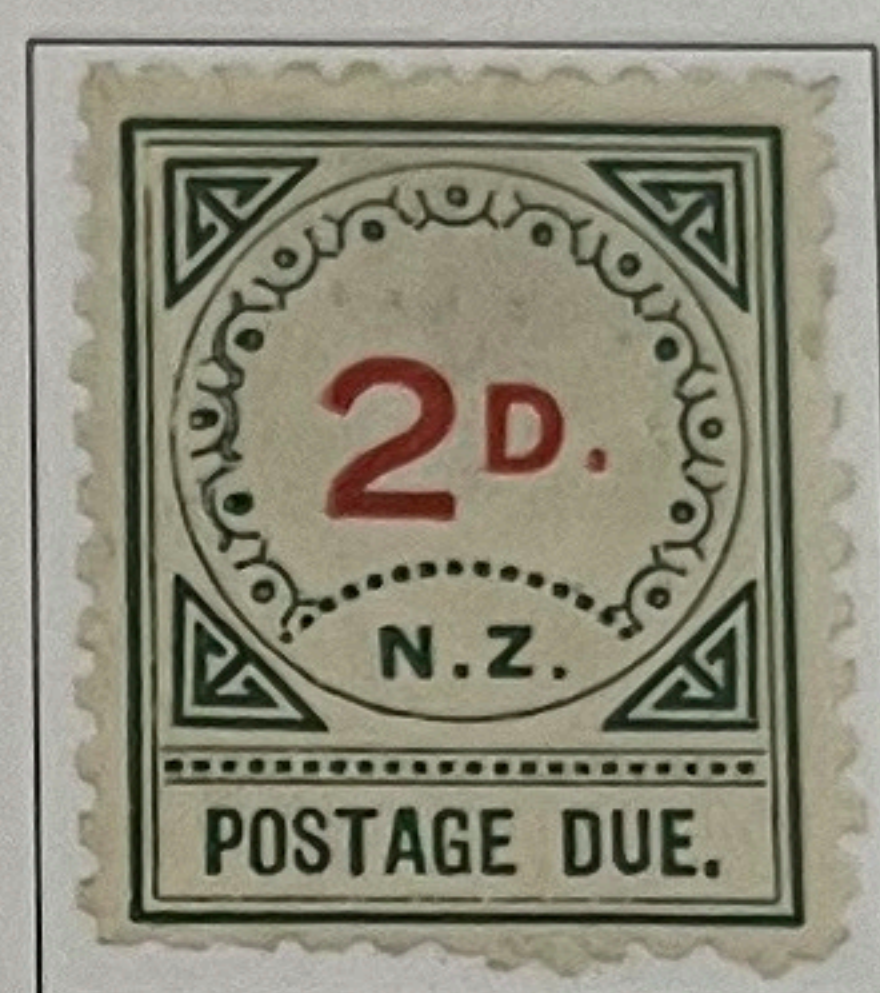
Narrow frame (Type II)



Presentation copy



UPU "Ultramar"



Used Napier
 Aug 1903



The top panes of the 2d had the large "D" while the bottom had the small "D," the opposite of the way the 1d plate was laid out. The cover appears to have tried to use official status (with the incorrect original annotation of "O.P.O.S." corrected to "O.P.S.O.") to the Government Life Insurance office in Wanganui by mailing without a stamp. At first glance, the cover seems to have had a stamp, but the completed faint cds shows that a fairly thick enclosure may have been in the lower portion of the envelope.

First Issue Postage Dues

1 December 1899

3d (large "D")

Perf. 11

NZ and Star Watermark

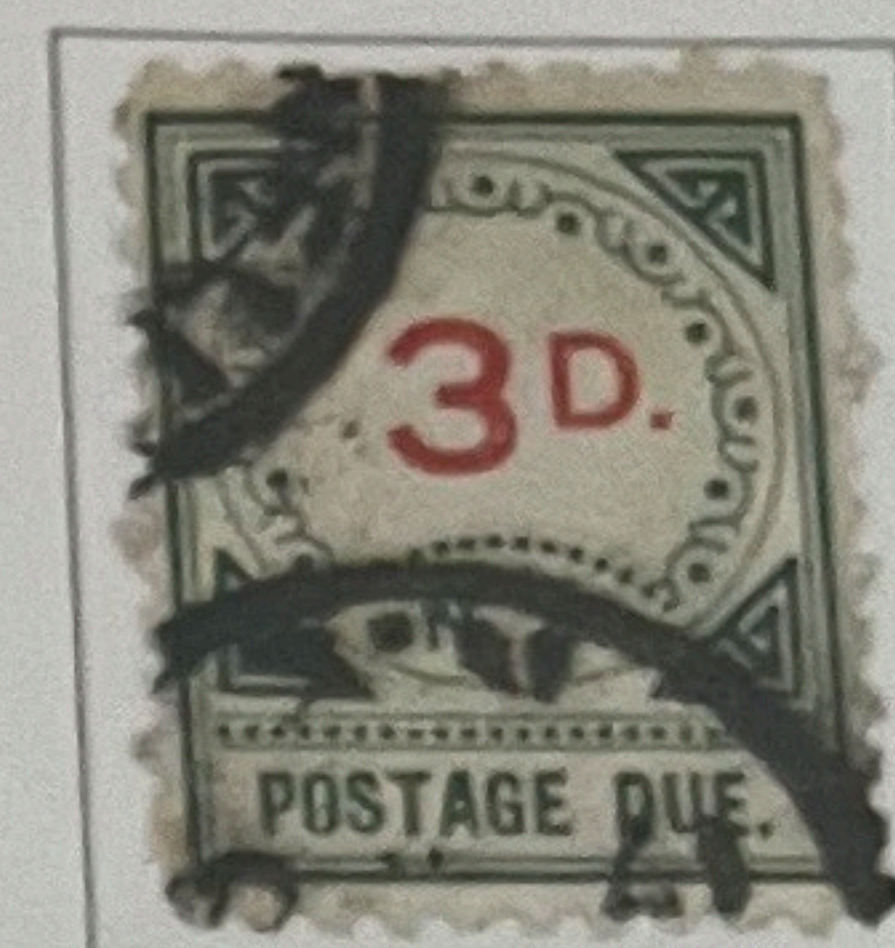
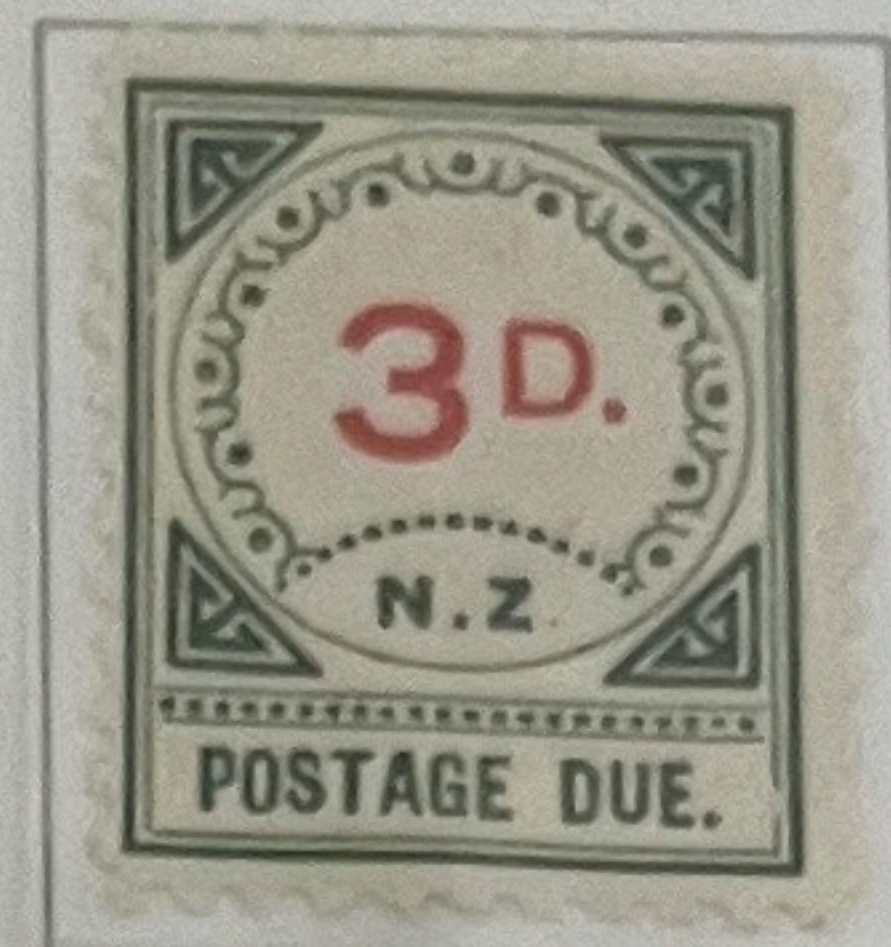
Narrow frame (Type II)



Presentation copy



UPU "Ultramar"



The 3d was a denomination added after the original set had been ordered. It has the large "D" because the value plate that had been used before had been dismantled before the 3d was assembled and the larger font was the choice available.

Examples on cover are very difficult to find.

First Issue Postage Dues

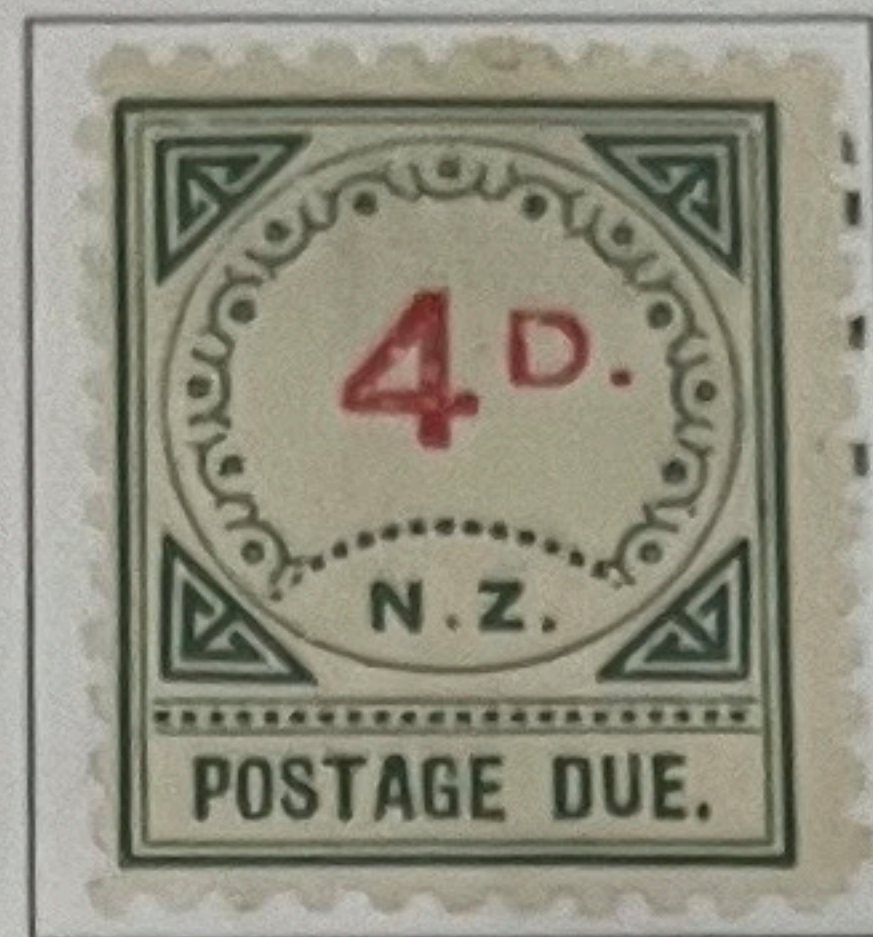
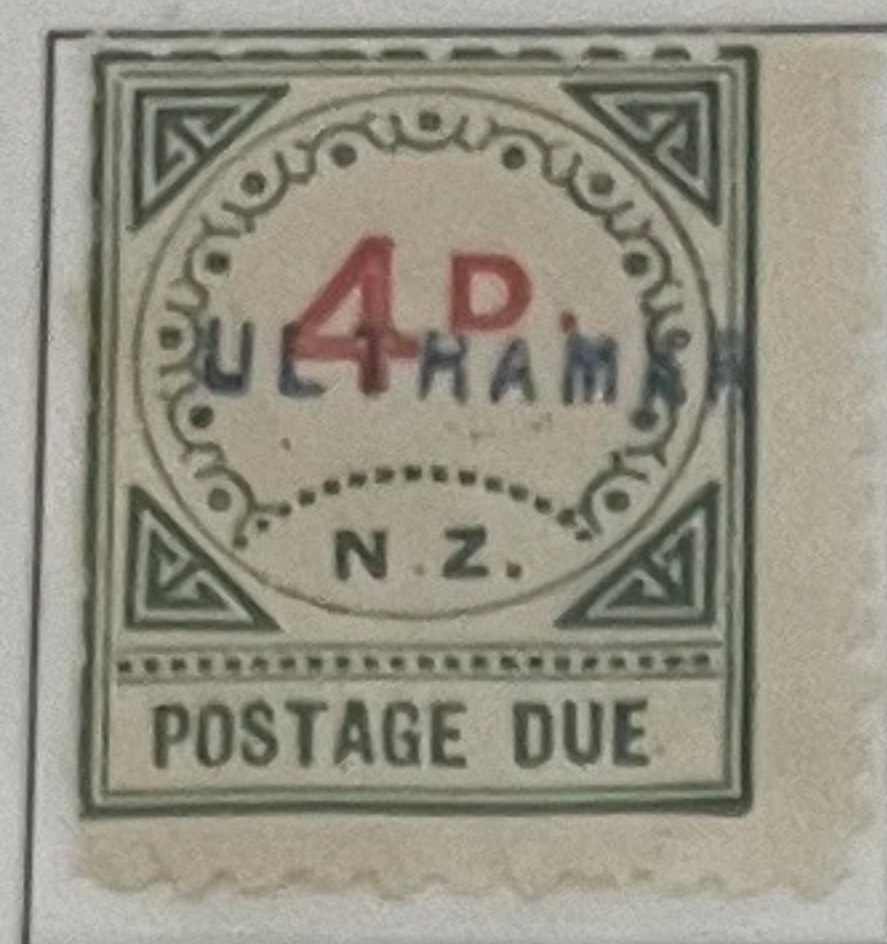
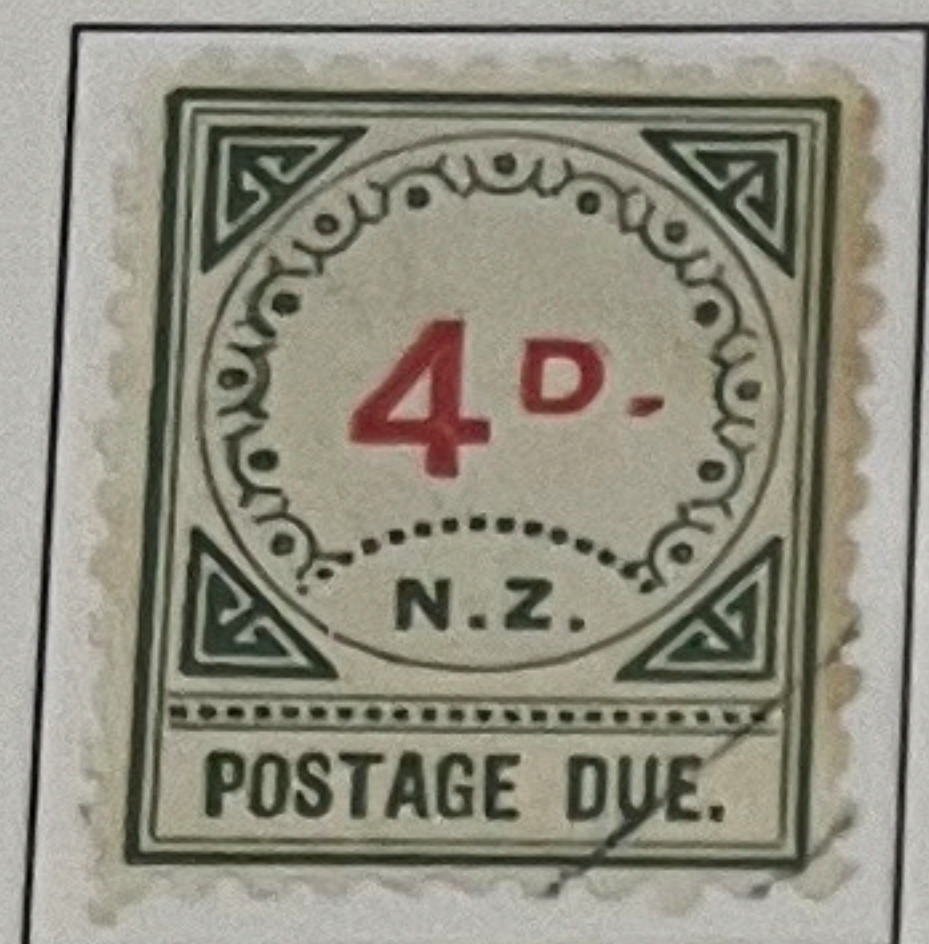
May 1900?

4d (small "D")

Perf. 11

NZ and Star Watermark

Narrow frame (Type II)



Presentation copy

UPU "Ultramar"

Used Wellington
JL 1900

No stop after "N"
BR. pane, Row 10/1

First Issue Postage Dues

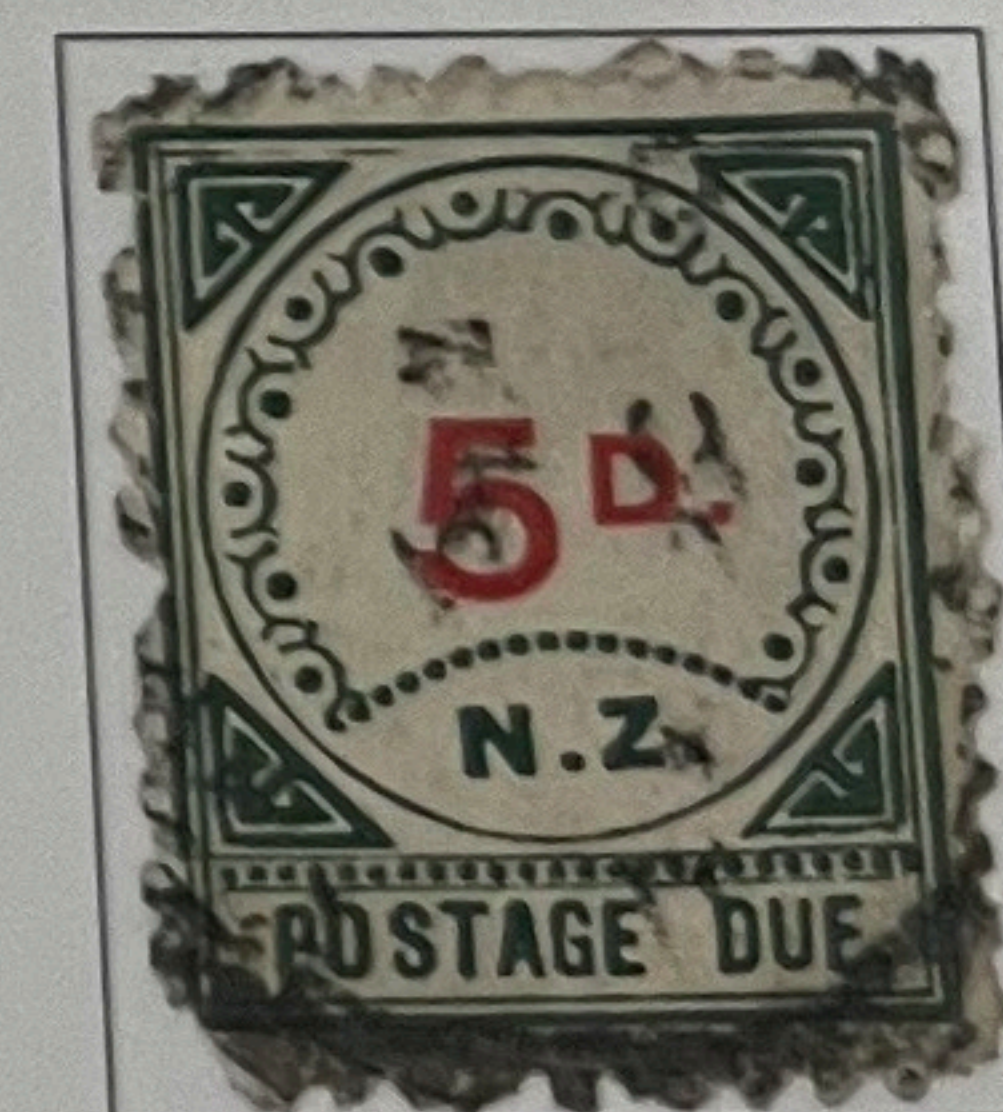
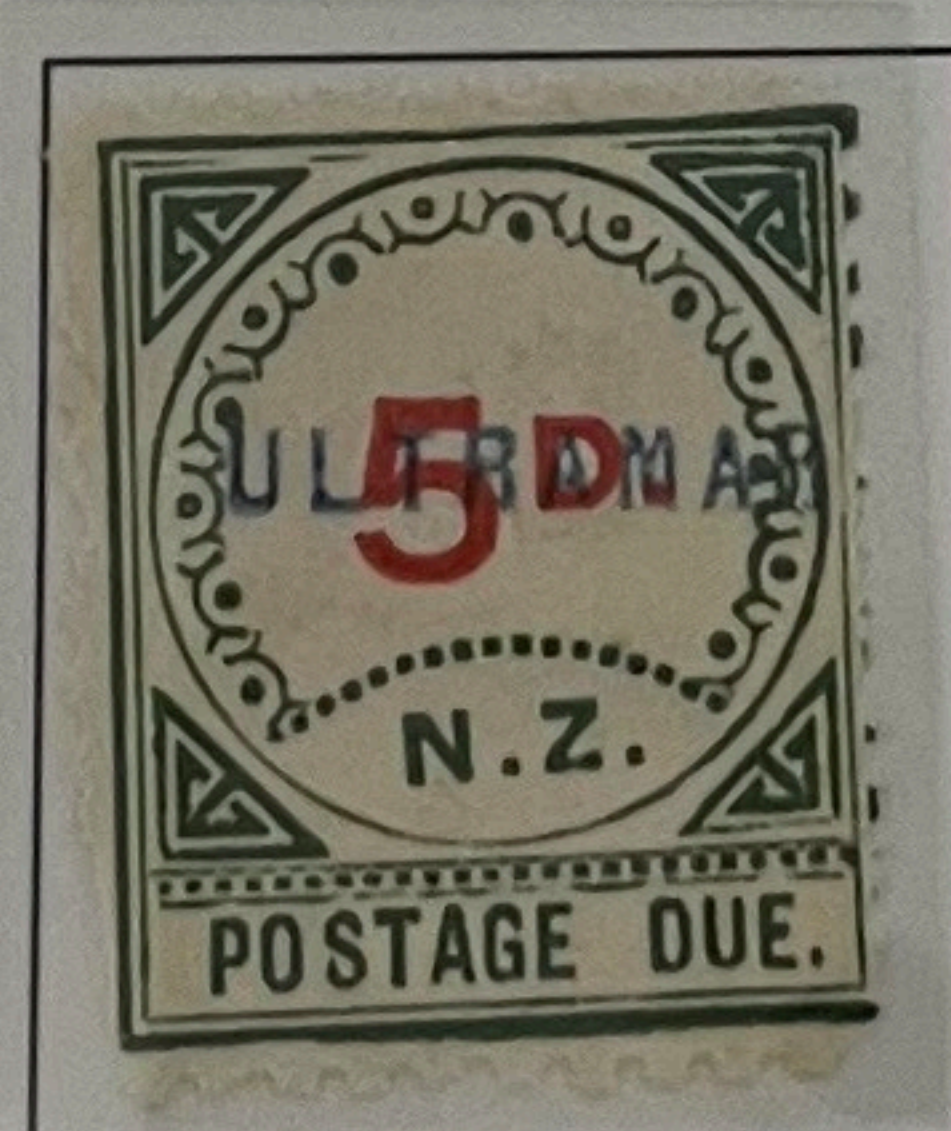
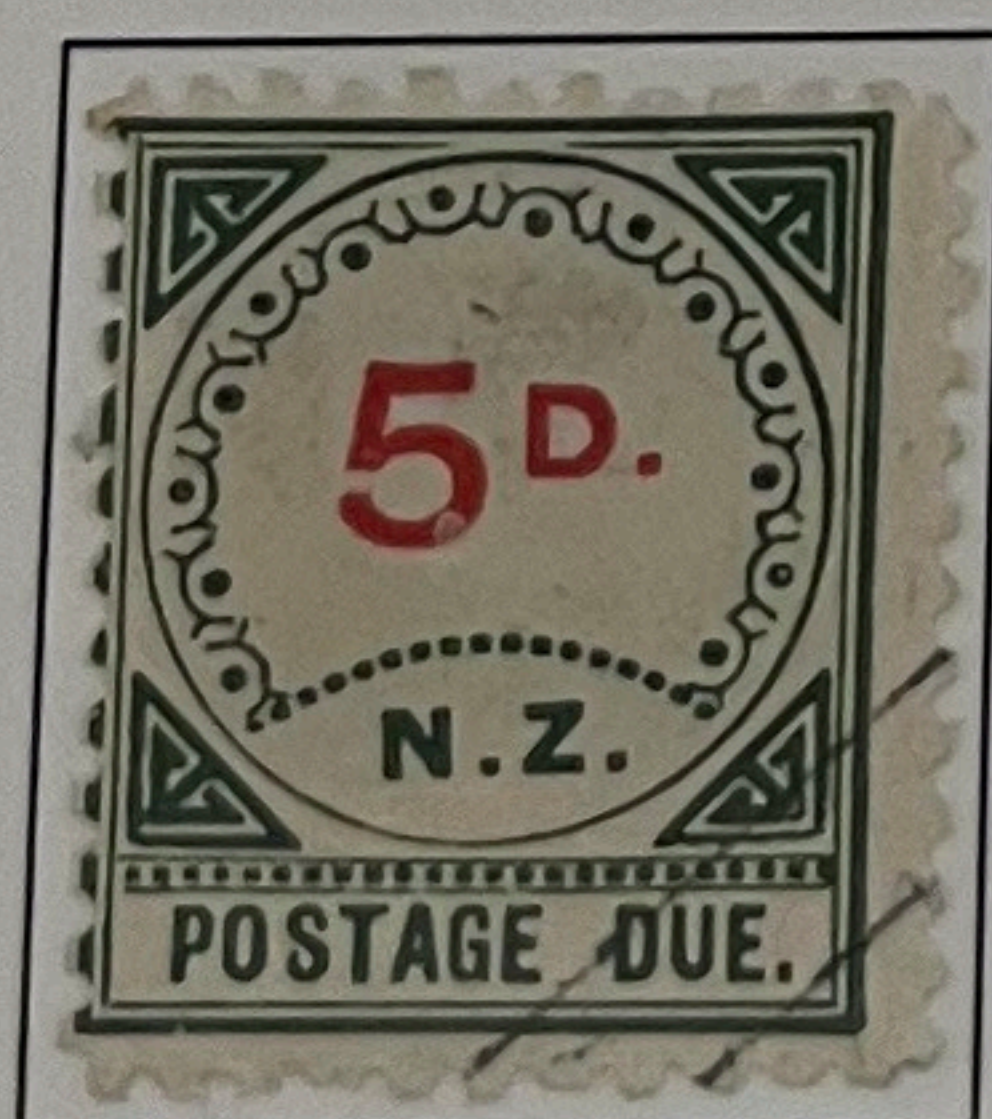
1 December 1899

5d (small "D")

Perf. 11

NZ and Star Watermark

Wide frame (Type I)

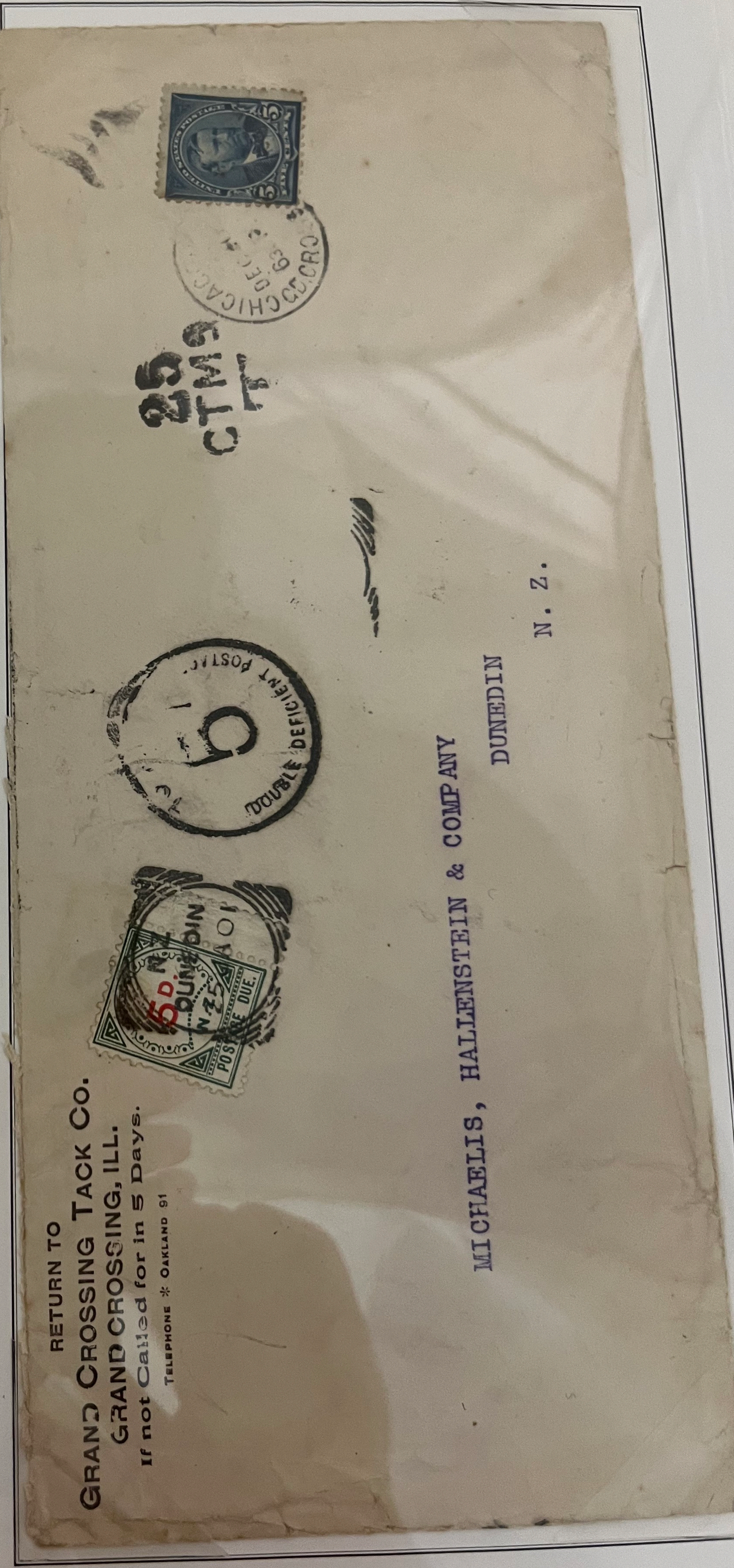


Presentation copy

UPU "Ultramar"

The 4d denomination is believed not to have been issued until May of 1900. Both it and the 5d denomination have the small "D" but the 4d has the narrow frame and the 5d has the wide version. Very few covers are known, with none of the 4d known to the exhibitor and others who collect this issue. Used copies of the 5d are scarce.

First Issue Postage Dues
Perf. 11
1 December 1899
NZ and Star Watermark
5d (small "D")
Wide frame (Type I)



This cover was apparently overweight
 and an additional 5d charged as double
 deficiency.
 It is the only example of a 5d postage due
 used on cover known to the exhibitor.

First Issue Postage Dues
1 December 1899
6d (small "D")

Perf. 11
NZ and Star Watermark
Wide frame (Type I)



Presentation copy



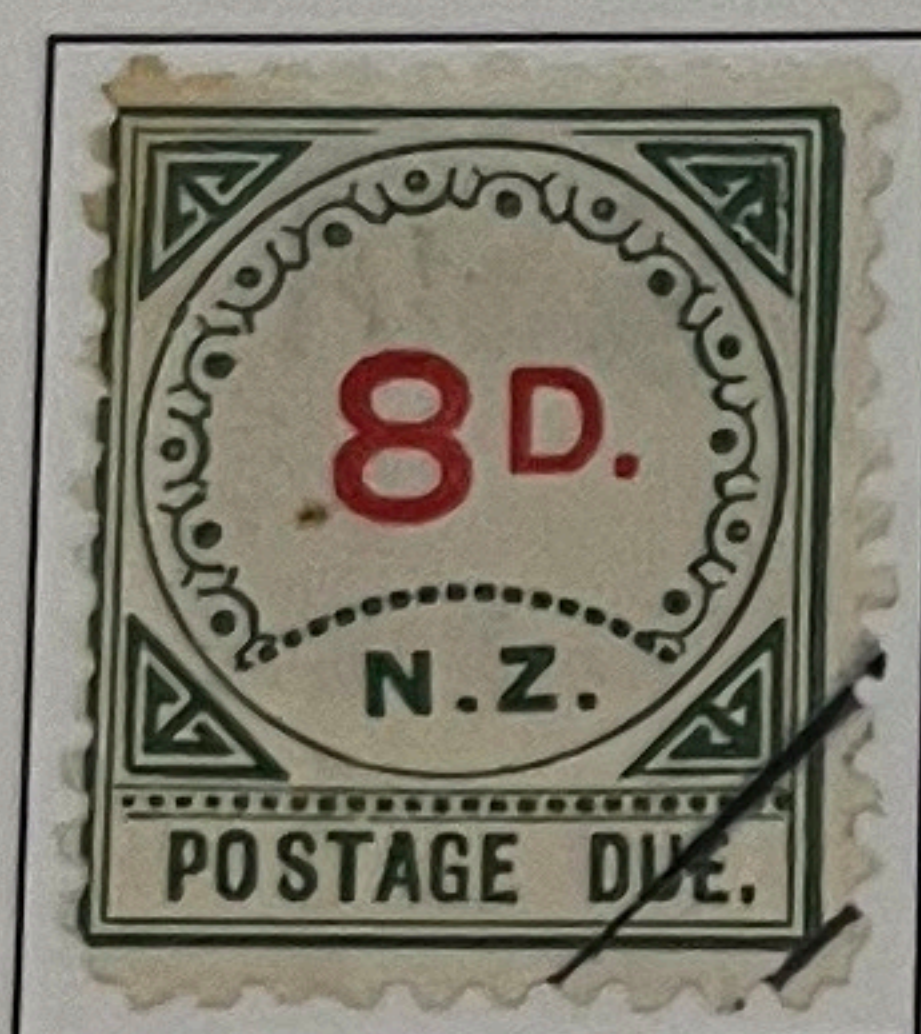
UPU "Ultramar"



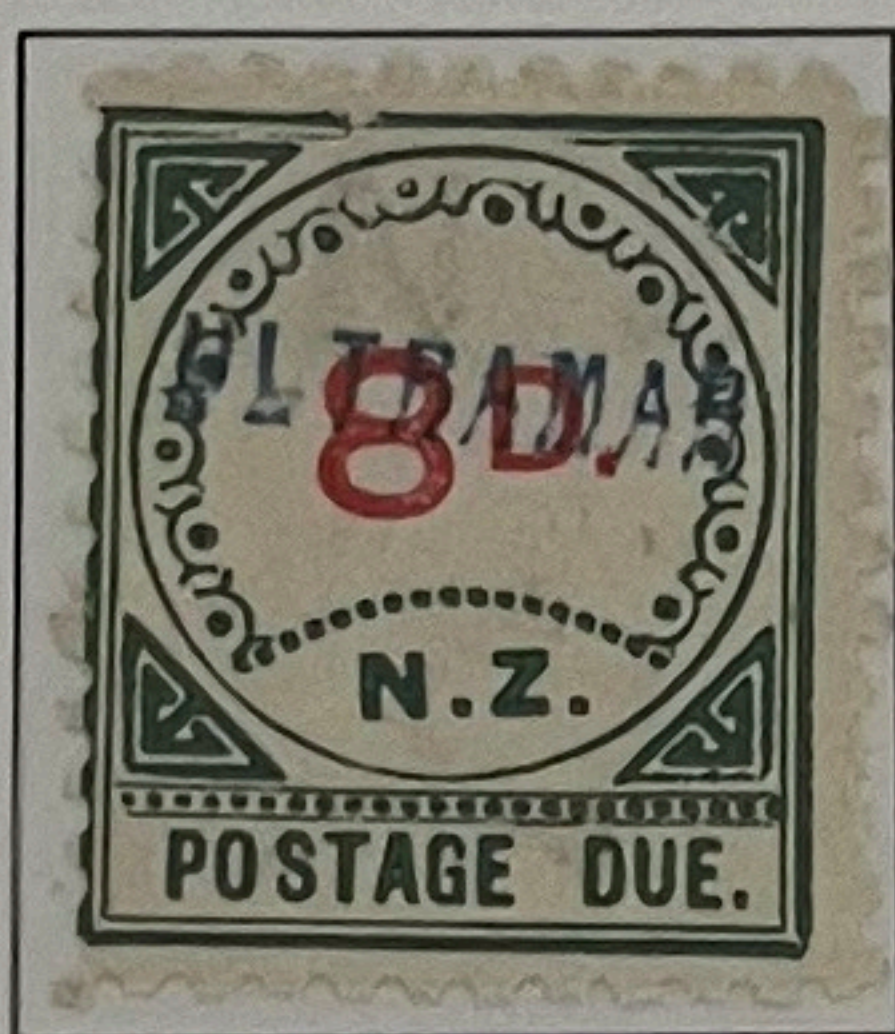
Registered cds

8d (large "D")

Wide frame (Type I)



Presentation copy



UPU "Ultramar"

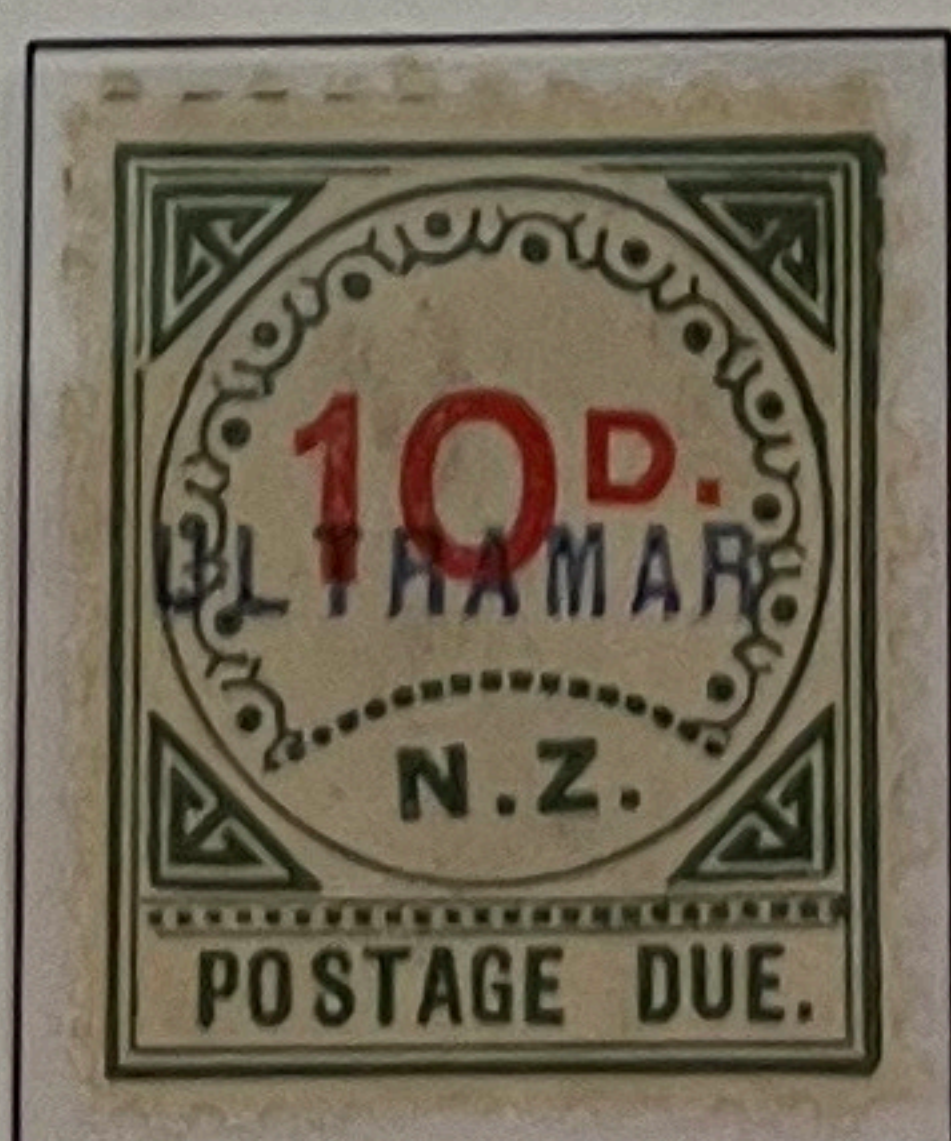


10d (small "D")

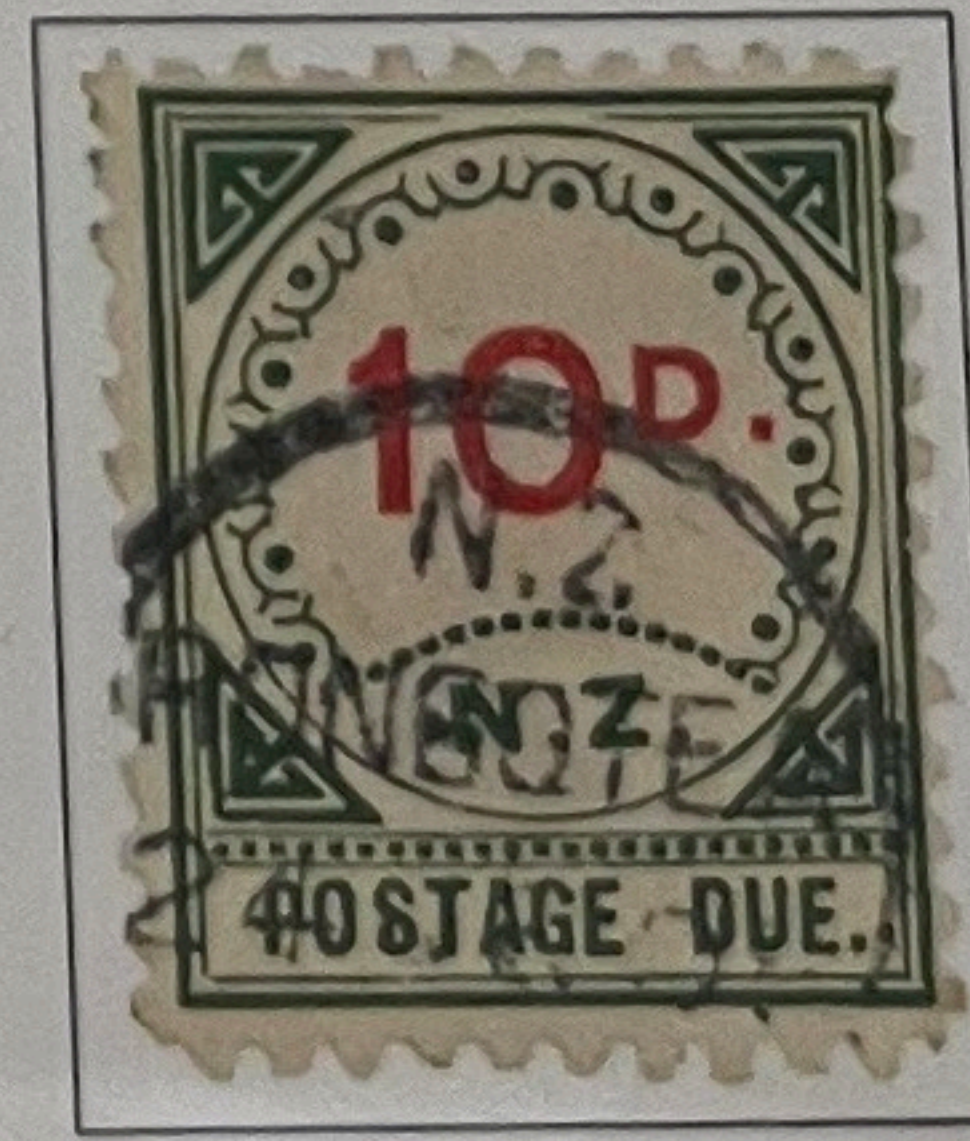
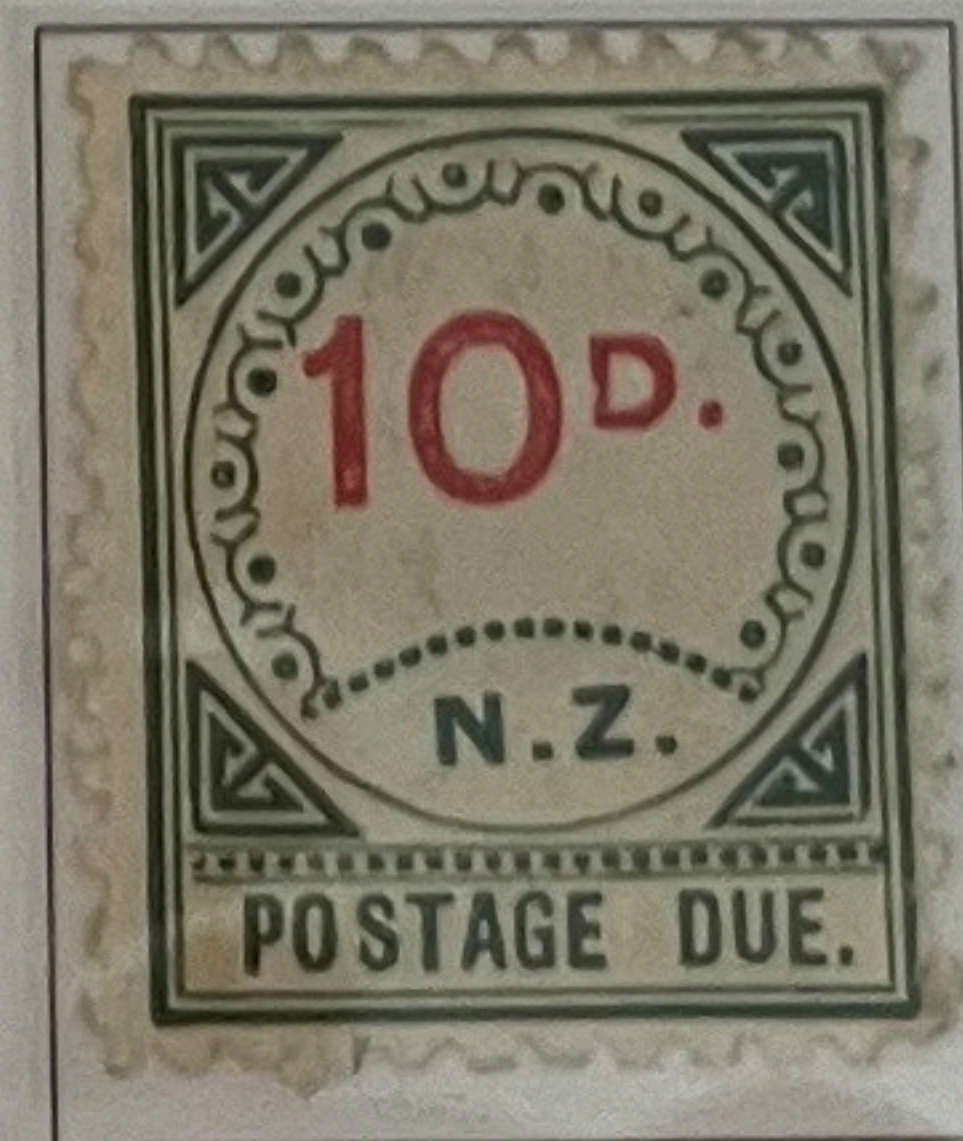
Wide frame (Type I)



Presentation copy



UPU "Ultramar"

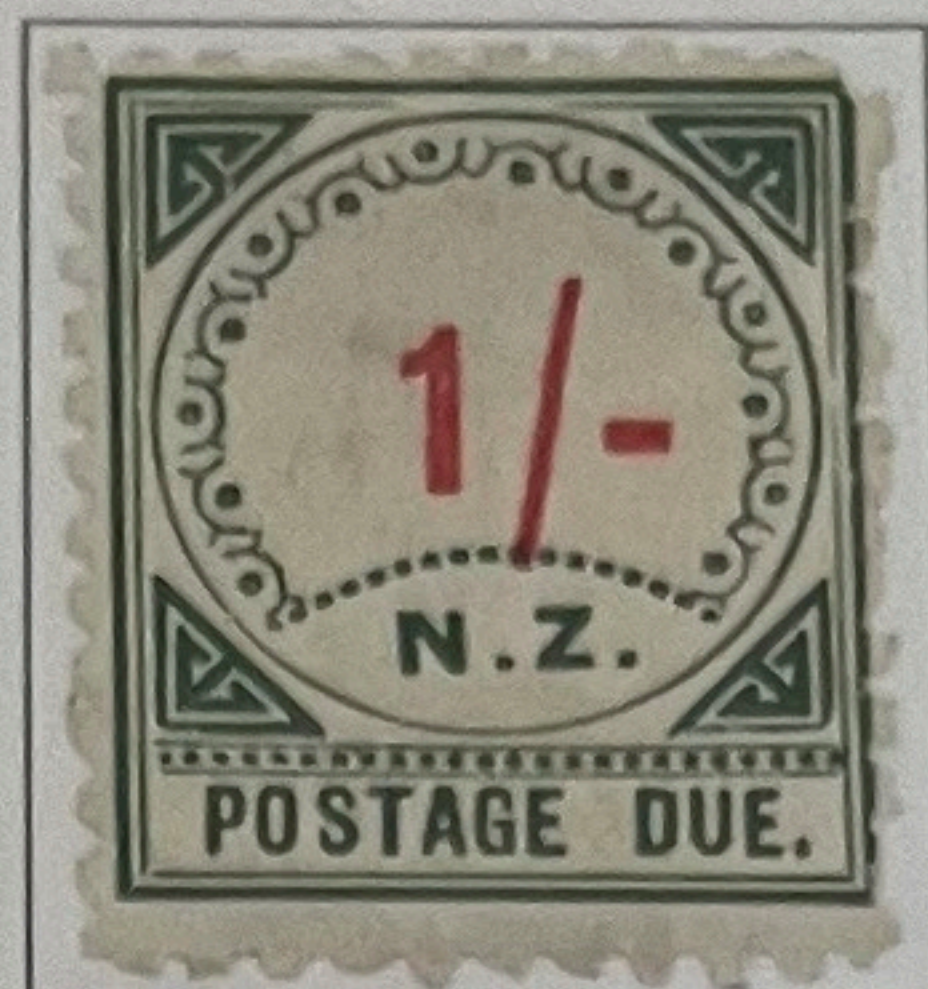
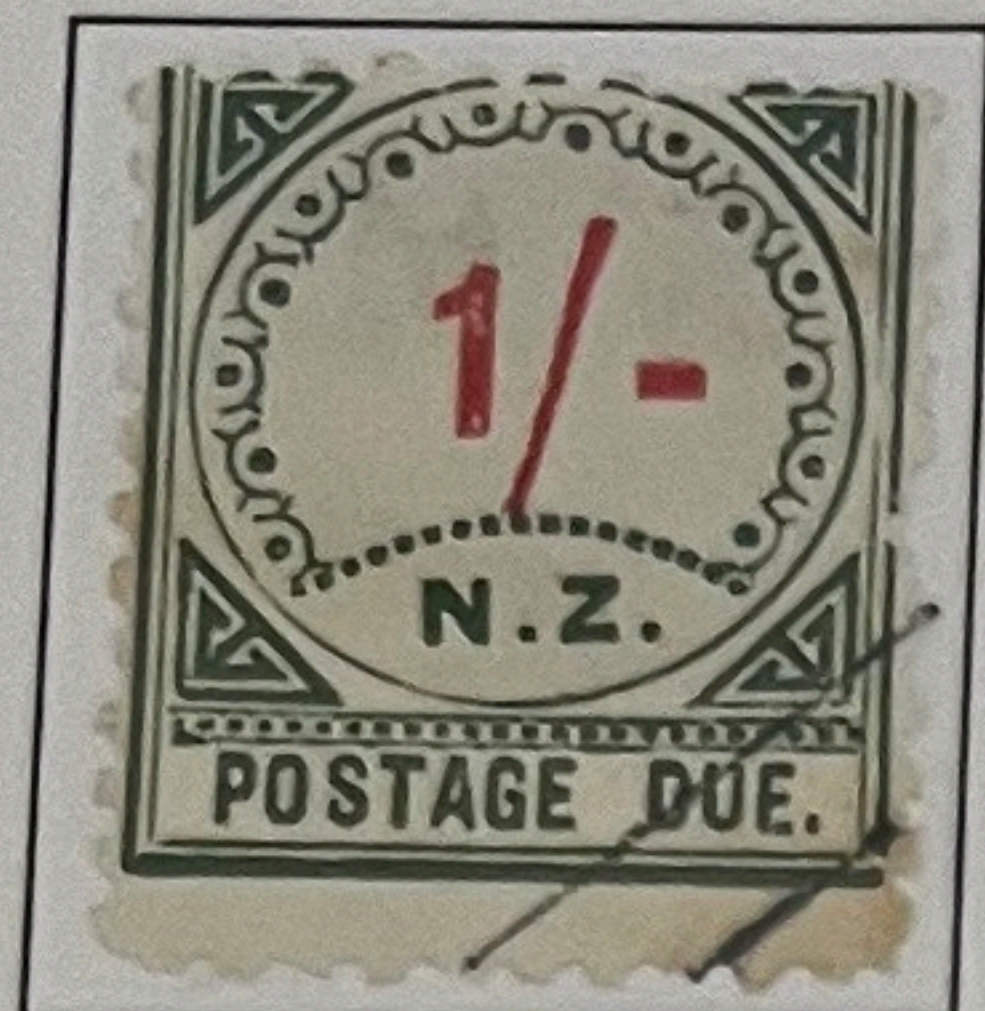


Rongotea
24 Jun 08

The 6d and 10d have the small "D" but the 8d was added after the value plates had been dismantled, so it has the large "D." Genuinely used copies of any of these three values are difficult to find and none are known by the exhibitor as used on cover, except for the combination shown with the 1/-. The used 6d is the correct value for double deficiency of the 3d registry fee, suggesting that a letter was found to be in need of compulsory registry, such as containing currency, and had tried to avoid the fee.

First Issue Postage Dues
1 December 1899
1/-

Perf. 11
NZ and Star Watermark
Wide frame (Type I)

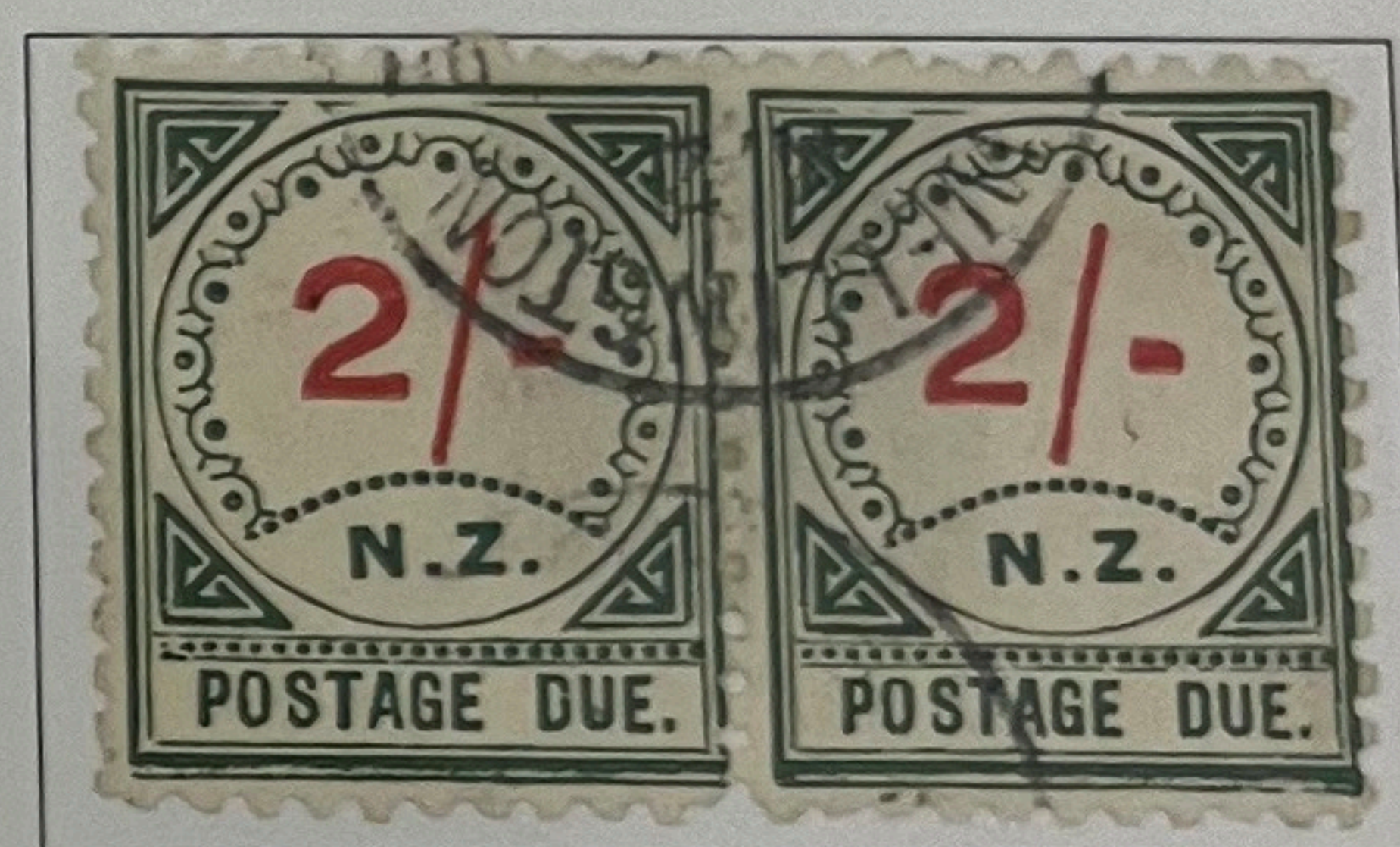
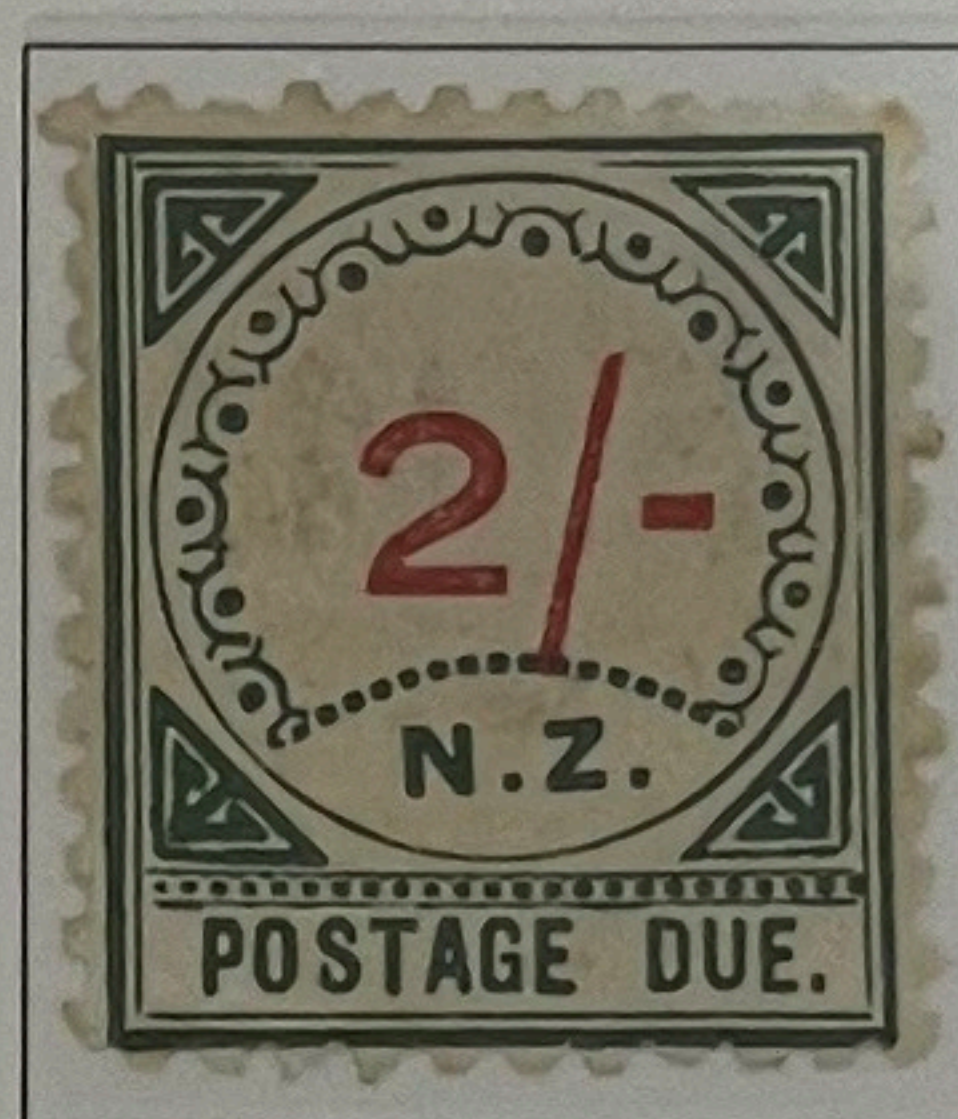
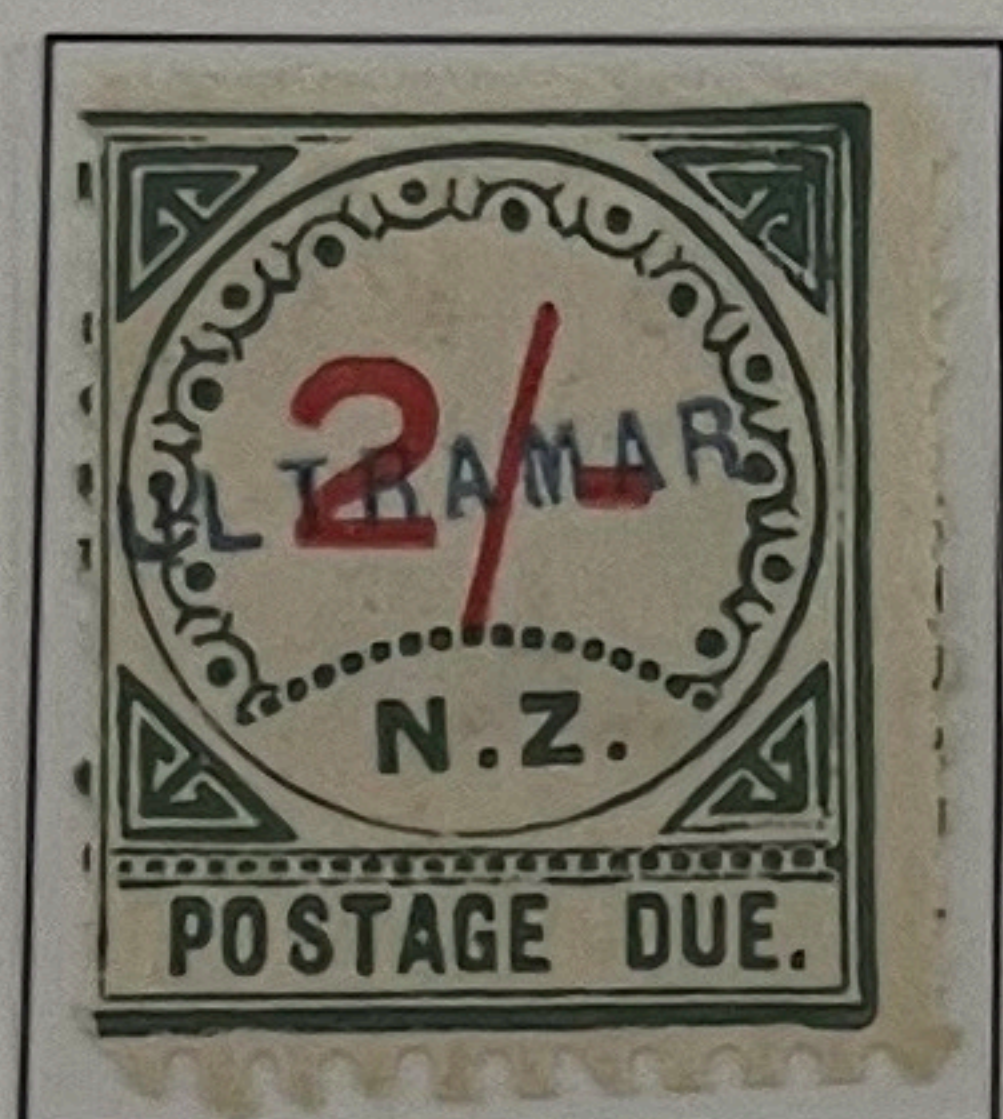
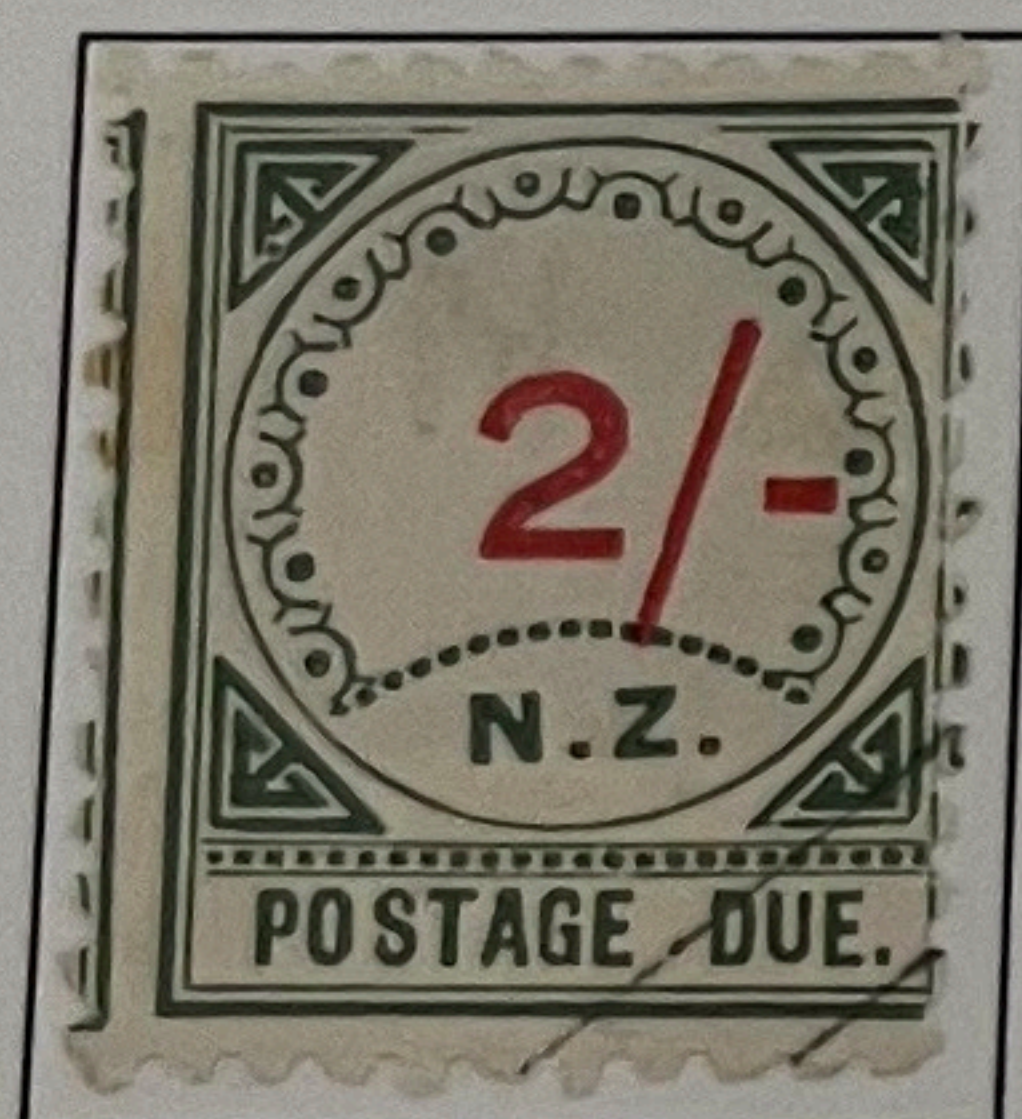


Presentation copy

UPU "Ultramar"

First Issue Postage Dues
1 December 1899
2/-

Perf. 11
NZ and Star Watermark
Wide frame (Type I)



Presentation copy

UPU "Ultramar"

First Express Delivery Issue
January 1903
6d

Perf. 11
NZ and Star Sideways Watermark

1
k



The cover shows all the correct elements for an express delivery letter: the label "Express" and the two parallel lines, along with the stamp created for the service.

First Express Delivery Combined with Postage Due
January 1903
6d

Perf. 11
NZ and Star Sideways Watermark



Express delivery charges of 6d covered only the first mile "by the nearest practicable road from the express delivering office." If a letter was outside that range, it was charged an additional 3d for each mile, up to a maximum of three miles. This letter was in the second mile, so required an additional 3d postage due.