

Confederacy 1861-1865

CSA Adhesive Issues

5-Cent Blue Lithograph

Fort Smith, June 23, 1862 → Fayetteville



Mailed 8 days before the end of the 5-cent single letter rate for up to 500 mile. An adversity envelope, made from one half of a previously used #10 sized envelope.

Des Arc, Prairie County, January 16, 1863 → Butler, Texas

Des Arc was occupied by Federal Forces by January, 1864



An adversity envelope made from wallpaper.

H No W



John L. Williams Esq
care of Col Randall
Camp Nelson
Little-Rock
Ark



Henry Shibley
Van Buren.
Crawford County
Arkansas -



Jesse Turner Esq -
Van Buren.
Arkansas.

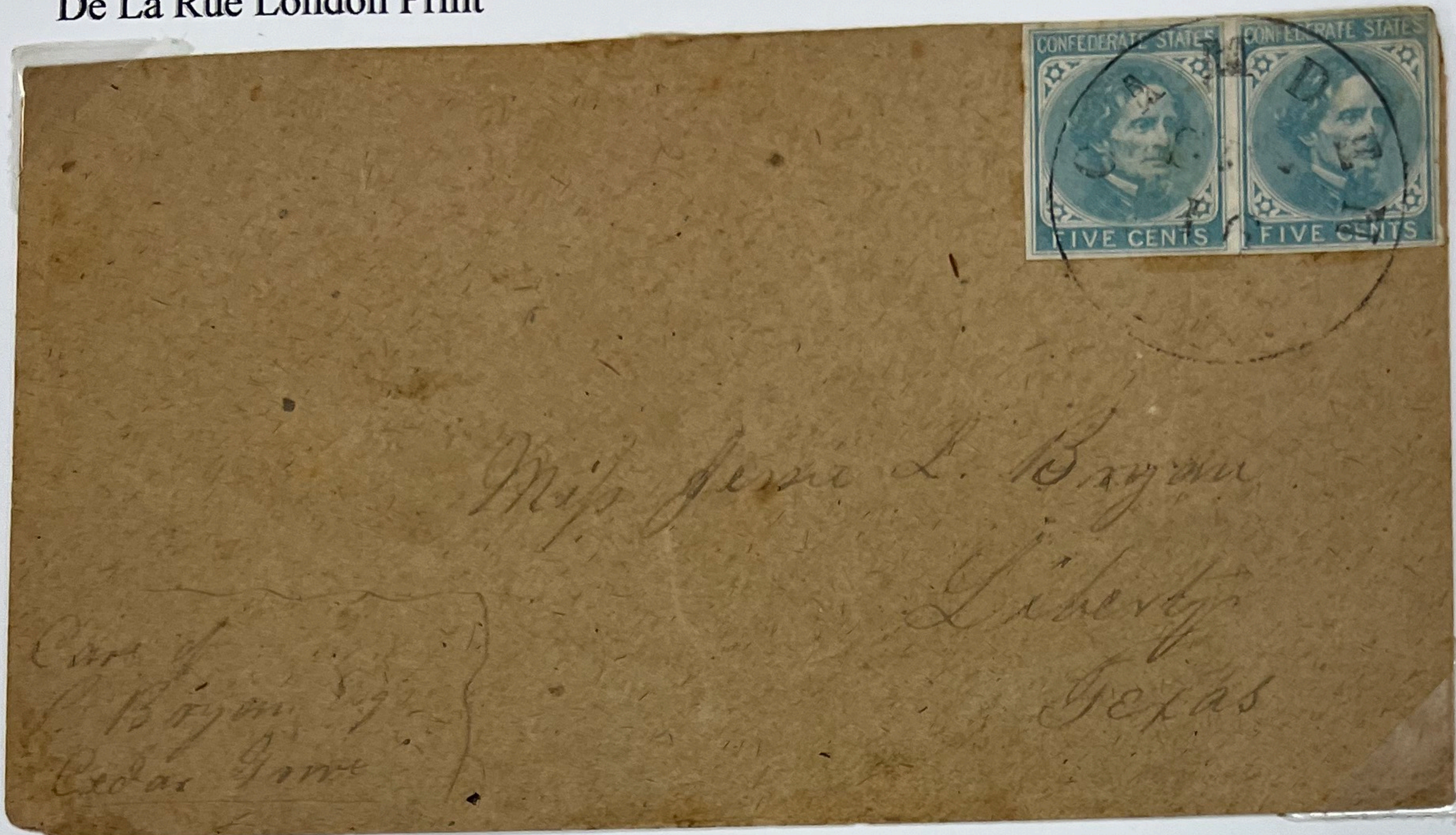
Confederacy 1861-1865

CSA Adhesive Issues

5-Cent Typographed, De La Rue & Archer & Daly issues

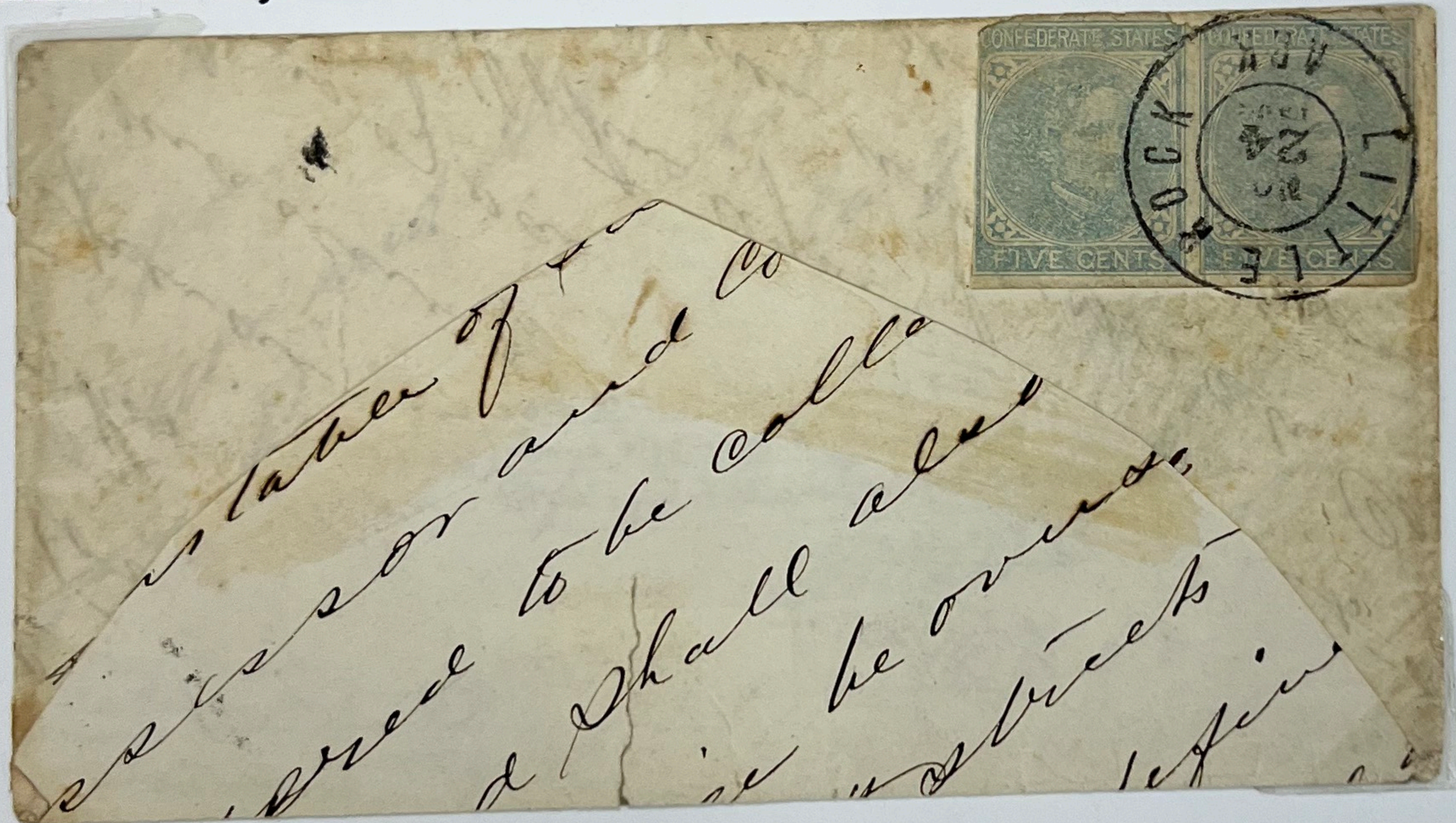
De La Rue London Print

Camden, September 16, 186?
→ Liberty Texas

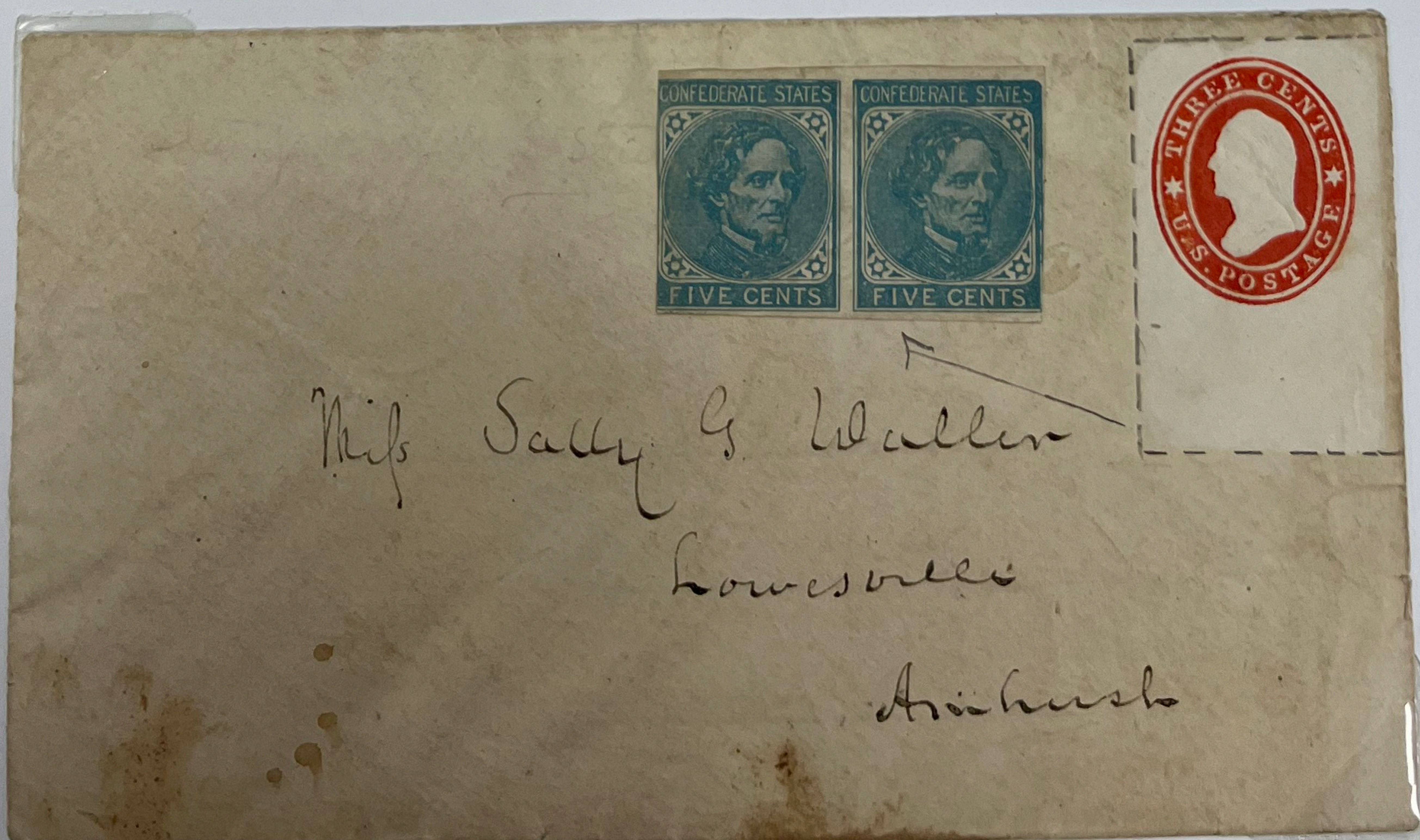


Archer & Daley Richmond Print

Little Rock,
November 24, 1862
→ Hillsboro, Texas



An adversary cover, made from a
previous letter



? → Lewisville

Adversity use of
US 2nd Embossed
Envelope issue, with
pair lifted and moved
to show underlying
indicia.

Incoming
Shreveport, Louisiana, October 13, 1864 → Camden,



Mrs. P. G. Lee

Camden.

Arkansas

"Mail"

The headquarters of the CSA
Military west of the
Mississippi was in
Shreveport.

Confederacy 1861-1865

CSA Adhesive Issues

10-Cent Typographed Archer & Daly Types I & II

WASHINGTON – CSA STATE CAPITOL AFTER SEPTEMBER 13, 1863

Incoming

Type I single paying 10-Cent rate for mail between post offices west of the Mississippi after the fall of Vicksburg. (Falls Creek, Texas), December 9, 1864 → Washington



After the fall of Little Rock, the Confederate State Capitol was moved to Washington in Hempstead County.

Monticello, Drew County, October 1863 or 1864 → Hillsboro
Type II Pair paying the double letter rate after July 1, 1862.

