

AUSTRALIA

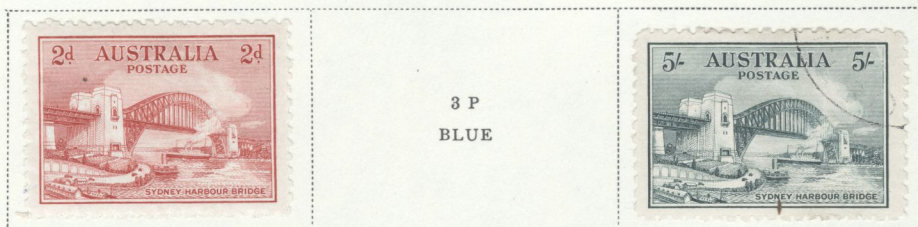
Unwatermarked
1931



Watermarked Small Crown and C. of A. Multiple
1931-36



Unwatermarked
1932



Watermarked Small Crown and C. of A. Multiple



Set
290-
(113)

1535-

419

AUSTRALIA

Watermarked
Small Crown and C. of A. Multiple

1932



Unwatermarked

1932



Watermarked Small Crown and C. of A. Multiple

1934



1934



1935



1935



NH 4107-

323-

AUSTRALIA

Unwatermarked

1963-65



10-16

Watermarked Small Crown and C of A Multiple



140-16

276-

AUSTRALIA

MILITARY STAMPS

Watermarked Small Crown and C. of A. Multiple
1946-47



1946

NH

NH

190-16

NEW GUINEA

Unwatermarked

1925



1926-28



498-

NEW GUINEA

Unwatermarked

1931



NH

496 - +

1932



NH

306 -

7967

NEW GUINEA

AIR POST STAMPS

Unwatermarked

1932



1934



EA 350-16

750-16

1412-

NEW GUINEA

AIR POST STAMPS

Unwatermarked

1931



250-16
137/49



\$311-

\$312-

190/203
250-16

\$1100

\$366-

163/76

250-16

677-

NEW GUINEA

OFFICIAL STAMPS
Unwatermarked
1925



NEW GUINEA

AIR POST STAMPS
Unwatermarked
1939



212/25

1100-16

\$720

720-

NEW GUINEA

OFFICIAL STAMPS

Unwatermarked

1927-29



set 86-

1931



769-

1932



1934



356-



701-



Papua SG63
1909 4d P.11
Rift in cloud
variety wmk
sideways
Mint £12



Papua SG69
1909 2½d P.12½
Rift in cloud
variety in pair
wmk sideways
Mint £25



SG54 1908
1/- black &
orange inv
wmk rift in
cloud variety
FM £35



Papua SG60
1909 1d P.11
Rift in cloud
variety wmk
sideways
Mint £20



Papua SG61
1909 2d P.11
Rift in cloud
variety in pair
wmk sideways
Mint £20



19



9
2
30



10, 2



11



11a
E65
48-



12
4



13



6
5



7
15

The paper used for Nos. 1/8 is white, of consistent thickness and rather opaque. The thin paper used for the horizontal watermark printings is of variable thickness, readily distinguishable from the thick paper by its greater transparency and by the gum which is thin and smooth.

Nos. 9/16 were initially printed on the same thick paper as the stamps with horizontal watermark and were line perforated. Values from 1/2d. to 2 1/2d. were subsequently printed on medium

paper on which the watermark was more visible. These were comb perforated. The thin paper with vertical watermark, produced in 1905, is much more transparent and has smooth gum. Printings were made on this paper for all values except the 2 1/2d., but only the 1/2d. and 2d. were issued in Papua although used examples of the 2s. 6d. are also known. The entire printing of the 1d. on thin paper with vertical watermark was used for subsequent overprints.

16
3,000

£623 → £785-



88



60



SG O56a
1931/32 1d
intense black &
red upper left
corner block of
4 one showing
lightning flash
variety
UM £18

£94 → 118-

Papua.
(4)

34



35



36
£325
150-



37

£685



38



39



40

(50)



41



42

55

£301-



43

53



44

(50)



44

6

£986 → 1242

Papua.
(3)

17
190



18



19



20



21



22



23



24



25

£225



26

£664-

£664 → 830



45
a



5 Large "PAPUA"



B



C



47
12



48
(720)



6 Small "PAPUA"



49
(71)



50



51



51a
210



52
(740)



53
(25)



54
(24)



55
71



56
120

56
a
13



57
R11



58
2504
54



59
500



60



61



62
73



63
"4" var
thick lines



64



65

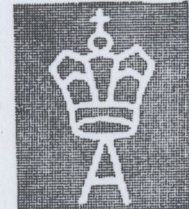
£204

£162



6 Small "PAPUA"

hr
T7



8



84



84
a



85



86



87



87
a



88



89



90



91

(b) P 14
 92 6 1d. rose-pink (6.15) 22-00
 a. Pale scarlet 6-50



92



92
a



5 Large "PAPUA"



B



C

A variety showing a white line or "rift" in clouds occurs on R. 5/3 in Nos. 49/74 and the "white leaves" variety mentioned below No. 22 occurs on the 2d. and 2 1/2d. values in both issues. They are worth about three times the normal price.



75



76



77



78



79



80



81



82
I



83
II

Large "PAPUA"



2sh6p:

Type I - The numerals are thin and irregular. The body of the "6" encloses a large spot of color. The dividing stroke is thick and uneven.

Type II - The numerals are thick and well formed. The "6" encloses a narrow oval of color. The dividing stroke is thin and sharp.



97
99



98
99



98
99



98
c



99
2c



99
a



99
aw



100
25



101
25



101
aw



102
v



102
50



102
a



93
88



93
a



93
w



94
12



94
a



94
aw



94
v



95
25



95
aw



95
v



95c
30



96
25



96
a



96
aw



96
v



103



103
a



104



105

£280

ONE PENNY
(9)



106



106
a



107



108



109



110

£30



111

PAPUA NEW GUINEA

55 56 OFFICIAL STAMPS 57 58
Watermarked Crown and Single-lined A Sideways
1931



59
60
61
64



Watermarked Small Crown and C. of A. Multiple
1932



63

56a
57
66

62
66
65

£130 → 163

PAPUA AND NEW GUINEA

Watermarked Crown and Double Lined A
1910



Watermarked Crown and Single Lined A Sideways
1911-15



6 P
ORANGE BROWN



Same
Perf. 14
1 P
LIGHT RED

92

\$242-

80

\$82-

80

324

BRITISH SOLOMON ISLANDS

Watermarked Multiple Crown and C. A.
1922-23



(NH) ml 300

Et 600-

Watermarked Multiple Crown and Script C. A.



3 P
TRAMARINE

1924



100

1922-27



1931



200-11

860-

BRITISH SOLOMON ISLANDS

Unwatermarked
1907



250-09

Watermarked Multiple Crown and C. A.

1908-11



190-09

1913



\$255-

\$16-

1914



\$523-



1130-

COOK ISLANDS

Watermarked N. Z. and Star Wide Apart

1901



Unwatermarked

1902



Watermarked N. Z. and Star Close Together

1902



1909-11



1916-19



210

260

127

597

COOK ISLANDS

Unwatermarked

1892



10 P
CARMINE
Scott No. 4



Watermarked N. Z. and Star wide apart

1893-94



1898



1898-1900



1899



475

246

241

40

952

COOK ISLANDS

Unwatermarked
1931

Stamp of 1920
Surcharged
TWO PENCE
On 1½ P
BLUE
AND BLACK

Watermarked
N. Z. and Star, Close Together
1931

Same Surcharge
On Stamp of
Type of 1920
2 P
On 1½ P
BLUE
AND BLACK

Watermarked N. Z. and Star Close Together
1931



Unwatermarked
1932



Watermarked Single-lined N. Z. and Star Close Together
1933

Same ½ P DEEP GREEN AND BLACK	2½ P DARK ULTRAMARINE AND BLACK	4 P BLUE AND BLACK
--	---------------------------------------	--------------------------

296-

COOK ISLANDS

Unwatermarked
1920



Watermarked N. Z. and Star Close Together
1921



VLL

1925-27

Type of 1920 ½ P YELLOW GREEN AND BLACK	1 P CARMINE AND BLACK		
--	-----------------------------	--	--

1926-28



400-

COOK ISLANDS

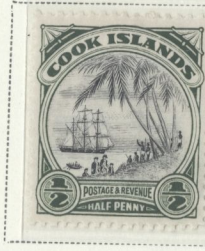
Watermarked Single-lined N. Z. and Star Close Together
1938



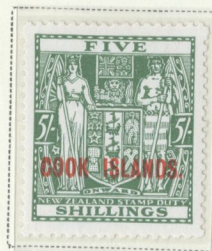
Watermarked Multiple N. Z. and Star
1940



1944-46



1943



1948



NH

100+

COOK ISLANDS

Watermarked Single-lined N. Z. and Star Close Together
1935



1935-36

Types of 1932
2 P
BROWN
AND BLACK

1 P
DARK CARMINE
AND BLACK

1 S
DEEP VIOLET
AND BLACK

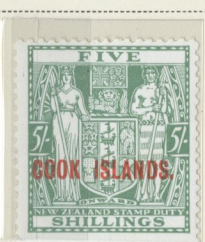
6 P
ORANGE
AND BLACK

1936



NH

1933-36



NH

NH

NH

NH



Est 1500+

1068-

Watermarked Multiple N. Z. and Star

1937



1510-



135-800??
219=29 448-16

NH

445-

486-

COOK ISLANDS

Watermarked Multiple N Z and Star
1946-50



NH

NH

1953

NH

320-EST 600-
1+



1960



1963



620-

FIJI

Watermarked Multiple Crown and C. A.

1921-23 Die I Die II



1922-23



1927



1935



675-

165

15-

855-

670/16

FIJI

Watermarked Crown and C. A.

1903

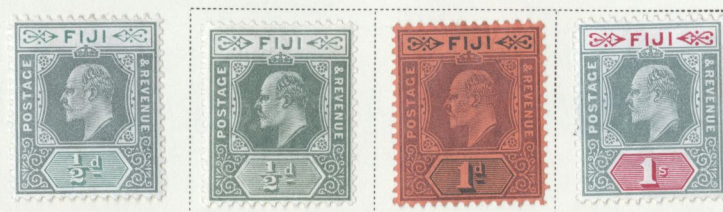


KFT 3764



Watermarked Multiple Crown and C. A.

1904-09



75-16

1906-12



743-

1912-16



4 P
BLACK
AND RED
ON YELLOW
130



60-

1764-

FIJI

WAR TAX STAMPS

Watermarked Multiple Crown and C. A.

1916



*130 Est. 16
Large W 250+*



£ 140

*SPECIMENS 12085
140-16*

GILBERT AND ELLICE ISLANDS

Watermarked Multiple Crown and C. A.

1911



214

180-16



18-16

22-

1912-19



706-



2600
180-76
(756-)

1698-

No. 19163

DAVID BRANDON

EXPERT COMMITTEE

WELLINGTON HOUSE, GUILDFORD, SURREY GU3 1DE.

Date 15-3-1996...

The Committee is of the opinion that the

Nauru 1916 10/- deep bright blue
of Great Britain, Wmk. Single
Cypher, Perf. 11x12, De La Rue
Printing, overprinted in red
(S.G. 23a) unused with original
gum is genuine.
(Scott # 15).



D. W. Ansell
David Brandon

No. 19162

DAVID BRANDON

EXPERT COMMITTEE

WELLINGTON HOUSE, GUILDFORD, SURREY GU3 1DE.

Date 15-3-1996...

The Committee is of the opinion that the

Nauru 1916 5/- bright carmine of
Great Britain, Wmk. Single Cypher,
Perf. 11x12, De La Rue Printing,
overprinted in black (S.G. 22)
unused with original gum is
genuine.
(Scott # 14).



D. W. Ansell
David Brandon



1924-34
PRINTING
SG 26A/39A
290-

NAURU

Watermarked Crown and G. R. Single
1916-23



104-

Watermarked Large Crown and G. V. R.



480-

1920



85-

669-



1924-34
 PRINTING
 SG 26A/39A
 290-

NAURU

Watermarked Crown and G. R. Single
 1916-23



104-

Watermarked Large Crown and G. V. R.



480-

1920



85-

669-

SG 5a

NEW HEBRIDES

£100
no price *

British Issues

Watermarked Crown and C. A.

1908-09



Watermarked Multiple Crown and C. A.



1910



1910



£
202
++
(258)

79-

19

19-16

120-

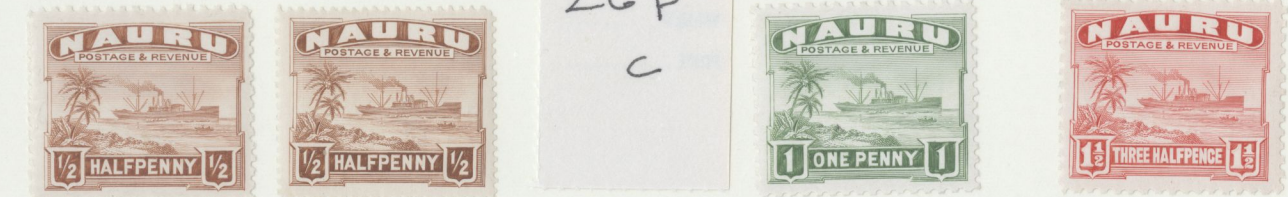
110-16

476-

370-14

26B-39B

26B
c



1937-48 PTG.
SG 30d
33 B
36 B

249-

No. 86 029

May 9, 19 80

THE PHILATELIC FOUNDATION

270 MADISON AVENUE
NEW YORK, N.Y. 10016

EXPERT COMMITTEE

We have examined the enclosed item submitted by the applicant described as follows:

Country NEW HEBRIDES Issue 1921 Denomination 2p on 40¢
Color red on yellow Cat. No. 31

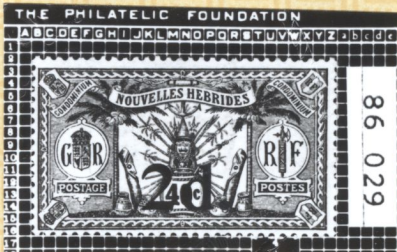
Brief description or additional information

All Catalogue numbers are Scott's unless otherwise specified.

Unused, o.g.

of which a photograph is attached and are of the opinion

that it is genuine. -----



Mabel Hill
For The Expert Committee
Chairman

submitted by Peter Kenedi Inc.

NEW HEBRIDES

British Issues

Watermarked Multiple Crown and Script C. A.
1925



Watermarked Multiple Crown and Script C. A.
1938



52-63

240-

NEW HEBRIDES

British Issues

Watermarked Multiple Crown and C. A.
1920-21



Watermarked R. F. in the Sheet



Cart
125-

Watermarked Multiple Crown and Script C. A.
1921

Type of 1911 1 P ROSE RED	2 P GRAY	6 P CLARET
---------------------------------	-------------	---------------

Watermarked Multiple Crown and C. A.
1924



Watermarked Multiple Crown and Script C. A.



14-16

159-

NEW HEBRIDES

POSTAGE DUE STAMPS

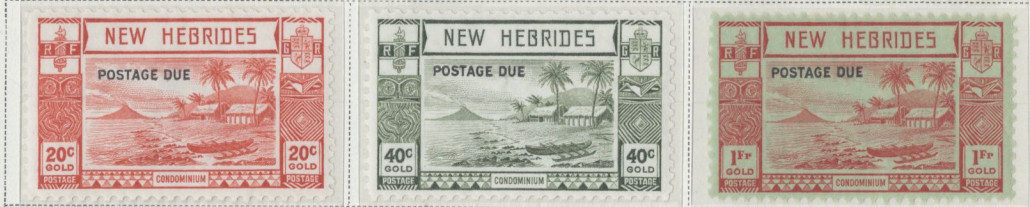
British Issues

Watermarked Multiple Crown and Script C. A.

1925



1938



1933



215

125-
14
Est 200+

27-

442-



1-5



6-10



11-21



22-
32

FRENCH NEW HEBRIDES
1938



SC F53/64 NH 110p25



34



36-37



39



40-42



44-54



67-78

NH
245



79-82



83-93

336-



94-97



98-108



250



J1-5



J6-10

103-

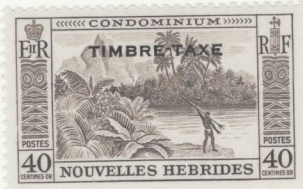
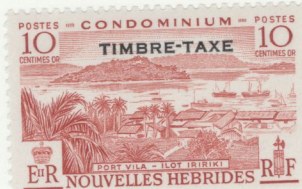
416-



J 11-15



J 16-20



J 21-25

NEW ZEALAND

Watermarked Single-lined N. Z. and Star Close Together

1916



1916-19



1920



NEW ZEALAND

Watermarked Single Lined N. Z. and Star Close Together

1906



1907-08

Designs of 1902-07
but smaller
3 P
ORANGE
BROWN

6 P
CARMINE
ROSE

1 S
ORANGE RED



1909



1912



1915



Engraved
Like 1 1/2 P
2 1/2 P
DULL BLUE

Like 1 1/2 P
4 1/2 P
DARK GREEN

Like 2 P
6 P
CARMINE
ROSE



Like 2 P
9 P
OLIVE GREEN



138

461

215-16

See
Cards

115

576

NEW ZEALAND

Watermarked Multiple N. Z. and Star

1936



186a



13 1/2 x 13 3/4 509 LH 700-16 170-16
215c 225- b 275

Watermarked Single-Lined N. Z. and Star Close Together

1936



450

Watermarked Multiple N. Z. and Star

1937



318-

NEW ZEALAND

Watermarked Single-lined N. Z. and Star

1921-22



1923



Unwatermarked

N. Z. and Star printed on the back in Blue

1925



111-

Watermarked Single-Lined N. Z. and Star close Together



54-

1926



249-

317-



2+NH

336

1940 CENTENARY



NEW ZEALAND


POSTAL-FISCAL STAMPS

Watermarked Single-lined N. Z. and Star Close Together
1940

Type of 1931-39 Surcharged as in 1939	5 S 6 P	11 S	22 S
3 S 6 P	On 5 S 6 P	On 11 S	On 22 S
On 3 S 6 P	ROSE LILAC	PALE YELLOW	SCARLET
DULL GREEN			


Watermarked Multiple N. Z. and Star
1940-52



	25 S	30 S	£2
	BLUE	CHOCOLATE	VIOLET

£2 10 S	£3	£3 10 S	£4	£5
DARK RED	LIGHT GREEN	ROSE	LIGHT BLUE	DARK BLUE

1944-46

	5 S 6 P	11 S	22 S
3/6	On 5 S 6 P	On 11 S	On 22 S
	ROSE LILAC	YELLOW	SCARLET

357-

NEW ZEALAND

SEMI-POSTAL STAMPS

Watermarked Single-lined N. Z. and Star Close Together

1929



1930



600 50 -

1931



1932



750

1933



750

1934



550

1935



1936



65

1936



319-

NEW ZEALAND

AIR POST STAMPS

Watermarked Single-Lined N. Z. and Star Close Together

1931



65-16

134



NH £ 170-

1934



35-16

1935



NEW ZEALAND

SPECIAL DELIVERY STAMPS

Wmkd. Single-lined N. Z. and Star Close Together

1903



11x11



14x14

1939



80



J18 NH
pl 61 £ Est 100++

NEW ZEALAND

OFFICIAL STAMPS

Watermarked Single-lined N. Z. and Star Close Together

1922-25



196-

Unwatermarked

N. Z. and Star Printed on the Back in blue

1925



Watermarked Single-lined N. Z. and Star Close Together

1927-28



2 S
BLUE

1933

Same Overprinted on
Postal Fiscal Stamp
of 1931-35

5 S
GREEN

1936



57-

243-

NEW ZEALAND

OFFICIAL STAMPS

Watermarked Multiple N. Z. and Star

1936-42



152-

Watermarked Single-lined N. Z. and Star Close Together



75-

Watermarked Multiple N. Z. and Star

1938



1941



51-

278-

NEW ZEALAND

OFFICIAL STAMPS

Watermarked Multiple N. Z. and Star

1940



1944



1944



NIUE

Watermarked Double Lined N. Z. and Star
1902

<p>New Zealand Stamps of 1902 Overprinted in Green</p> <p>NIUE. 1 P CARMINE</p>			<p>Same Perf. 11x14 1 P CARMINE</p>
--	--	--	---

Wmkd. Single Lined N. Z. and Star

Unwatermarked

			<p>Vermillion Surchage 2½ P BLUE</p>
--	--	--	--

Watermarked Single Lined N. Z. and Star
1903

--	--	--	--

1911-12

1915

1917

			<p>Overprint Similar to 1902 Issue 2½ P DARK BLUE</p>		
--	--	--	---	--	--

1917-20

						<p>1 S VERMILION</p>
--	--	--	--	--	--	--------------------------

1918

--	--	--	--	--

14x14½ 5-16
14x13½ 10-16
16-16
20-16
14x14½ 6-16

173-

NIUE

Watermarked Single-lined N. Z. and Star
1920-21

<p>New Zealand Stamps of 1915 Surcharged Like cut 2½ P DULL BLUE</p>	<p>NIUE. 6 P CARMINE ROSE</p>
--	--

Unwatermarked

1920

--	--	--	--

--	--

Watermarked Single Lined N. Z. and Star

1923

--	--	--

1925-27

--	--	--	--

1927

--

410-

NIUE

Unwatermarked
1931



Watermarked Single-lined N. Z. and Star Close Together
1931



Unwatermarked
1932



Watermarked Single-lined N. Z. and Star Close Together
1933



221

NIUE

Watermarked Multiple N. Z. and Star
1944-46



1944
Watermarked Single Lined N. Z. and Star Close Together



1946
Watermarked Multiple N. Z. and Star



415

NH

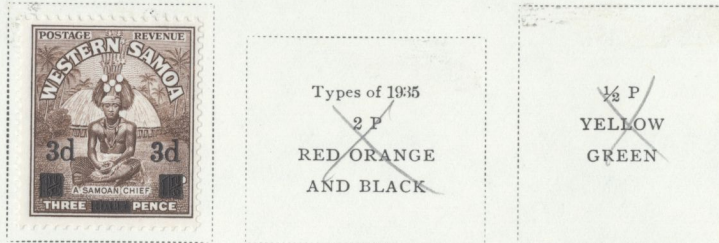
415

SAMOA

Watermarked Multiple N. Z. and Star
1939



1940-44



1946



1945-50



New Zealand
Postal-Fiscals
1931-50
Overprinted
2 S 6 P
BROWN

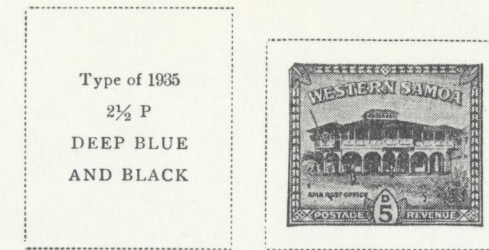
£2
VIOLET

£3
LIGHT GREEN

£5
DARK BLUE

SAMOA

Watermarked Multiple N. Z. and Star
1949



1952



1952-53



1956



1958



TONGA

1886-88

VARIOUS PERFS S. G. 1-4



18

18

18A



24

25

25

25A



3

30-36

300



415

48A



9

16-16

£ 498-

£ 498 -> 633 -

TONGA

Watermarked N. Z. and Small Star Wide Apart

1886-88

1892



2 P
VIOLET

6 P
ULTRAMARINE

1 S
BLUE GREEN



1891

20



1893

245-16



1894



Unwater

1895

24



12x12

12x11

12x11



1337-

975 -> 200-

Ne not true!



SIDWAYS UNLITID

1897 WATER MARK SIDEWAYS



SC 58



SSING

110-



49A



43a

NO. 5 ARLOP
120-16

120-16



49B SMALL O
LITID-6
(\$283-)

590-

TONGA

Unwatermarked

1895



1895

1896



Like cut
1/2 P on 1 1/2 P
On 2 P
LIGHT BLUE

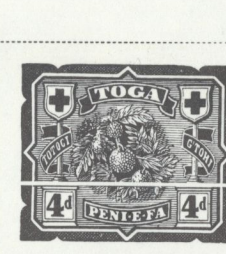


30A
BU 3010
£ 300 (\$378)

Watermarked Turtles

UPRIGHT

1897



1s
RED BROWN
AND BLACK



1899



54a 250-

1176-

TONGA

Watermarked Turtles

1922



1923



1924



478 140-16 -
£160 (202) !
wink sideways

160-16

56a - 2556

483-

TONGA

OFFICIAL STAMPS

Watermarked N. Z. and Small Star

1893



306

135

441-

NSW
8 VF ⊙ 300- Price



Style No. GK 102BK

NSW
26 VF ⊙ 800- Price



Style No. GK 102BK

56 10 ⊙ £200- Price 56 55 ⊙ pf 11 1/2 2012 by roulette £140- Price



Tasmania
56 18 ⊙ £140- Price



16 XF * £825- Price

88 2 ⊙ pf 10x12 £325- Price



56 043 VF * block (NH) £112++ Price Err M



56 R ⊙ £110- Price



Style No. GK 102BK

56 073 * block 3 (NH) £220 Price + fourth



56 044 1/2 * block 1 NH £168- Price fourth



B1+2 550- Price done & tropicalized gum



Style No. GK 102BK

23 * 210- Price



29 * £250- Price



Style No. GK 102BK

34 * NG 500- Price



1-7 VF * 609- Price



Style No. GK 102BK

54 VF* 3rd whk 325- Price 113-20, 124 VF* (NH) 358- Price



Style No. GK 102BK



54 (NH) 125- Price

150-1 VF* (NH) 105- Price 139-46 VF* (NH) 1372 Price



Style No. GK 102BK



Style No. GK 102BK

1A, 21, 21a, 24b, 32, 4, 5 129- Price



K 102BK



55 VF (NH) 3rd whk 400- Price 57 VF (NH) 3rd whk 425- Price



56 75s VF* 120- Price 102 VF (NH) 4th whk 925- Price



Style No. GK 102BK



Style No. GK 102BK

Scott 142-4 inser 3e 2 (NH) 259+ Price
56 147-9 blocks 1sh 1 (NH)



58 134 VF* (NH) 104+ Price
Scott 1004+ for 31 s/s



56 186 VF* inser block (NH) 192+ Price
56 168, 86, 8c Die I, Ia, II VF* 275- Price



56 168 b die Ia * block (NH) 720- Price 224bs-4ds (NH) 170- Price



Style No. GK 102BK



Style No. GK 102BK

178-9 inser. 10cl

2 NH

555- Price



JOHN ASH,
AUSTRALIAN NOTE AND STAMP PRINTER.

Style No. GK 107BK

186-7 VF *

NH

194- Price



539-45 *

234-

SG 190-203 VFO

£275 Price



56-225 XF

£160-Pr

SG 9, 10, 12-15

£275 Price



Style No. GK 102BK

Style No. GK 102BK

23 * inser. ship

NH

105++ Price



JOHN ASH,
AUSTRALIAN NOTE AND STAMP PRINTER.

19, 21-4, 26 vfo

exit to 1st w/p 45

£158-Pr



SG 45 vfo

£90-Pr



#18
2514
175
100

41-6, 48

143⁵⁰ Price



Style No. GK 102BK

190' SG 1, 3, 4, 7, 10, 13, 14

exit to 1st (diff. make)

£251- Price



19-26 VF *

\$280-Price



35, 38-40, 42-50

exit set 2/6 w/d cream

£395-Price



VFO 1911

£88-Price



GK 102BK

61-74, 66-7, 71 ^{only set} (1/2, 1/1, 1/2) ^{£411-} Price

75-81, 83C ^{only set} 2/6 type ^{VFO} ^{£156-} Price

SG 150a ^{£257-} 152a-3a 1, 3, 5d w comma flaw Price

SG 145-155 ^{VFX} ^{£75-} Price



84-92 ^{VFO} ^{£99⁷⁵-} Price

103, 4 ^{VFO} ^{£88-} Price

SG 44c-5s ^{VFX} ^{£90-} Price

SG 36s ^{VFX} ^{£42-} Price

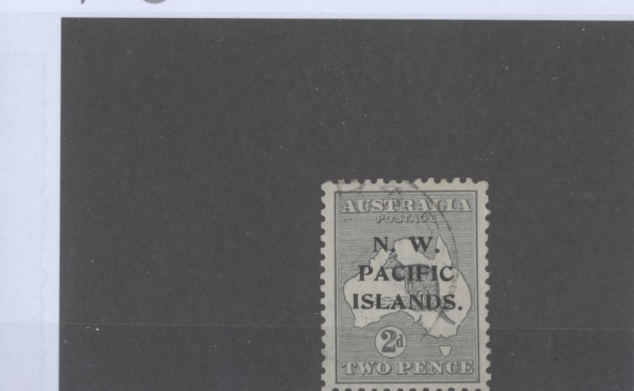


SG 105 ^{VFX} ^{top value} ^{£180-} Price

106-11 ^{VFO} ^{£45-} Price

N.W.P.I. ¹ ⁰ ^{Cat. Price 2 75-} ^{Our Price}

N.W.P.I. ⁴ ⁰ ^{Cat. Price 2 130-} ^{Our Price}



Style No. GK 102BK

Style No. GK 102BK

Style No. GK 102BK

Style No. GK 102BK

117-8 ^{only set} ^{VFO} ^{£76-} Price

SG 130-45 ^{VFO} ^{£450-} Price

N.W.P.I. ⁶ ⁴⁴ ^{Cat. Price 2 75-} ^{Our Price}

9 ^{VFX} ¹⁷⁰⁻ Price



Style No. GK 102BK

Style No. GK 102BK

Style No. GK 102BK

Style No. GK 102BK

NWPI
27 VF* 125- Price 37*



N.W.P.I. Scarlet
42 0

Cat. Price 2 675- Our Price

Style No. GK 102BK

200- Price



SG 241 VF 0 495- Price SG 252b perf 14 ^{VE*} ^{NH} 140+ Price



Style No. GK 102BK



Style No. GK 102BK

SG 256ca VF* Extra R stamp of island inser. strip of 3 ^{NH} 189+ Price

SG 38 VF 0 130- Price



THOMAS DE LA RUE & COMPANY, LIMITED, LONDON

2

Style No. GK 107BK

SG 54F 36 flag. line by turret VF* 160- Price 35-7 0 210- Price



SG 258 VF* ^{NH} corner margin block of 4 Scott 180++ 168+ Price



SG 113 0 170- Price SG 113-14 VF 0 ^{top} values 770- Price

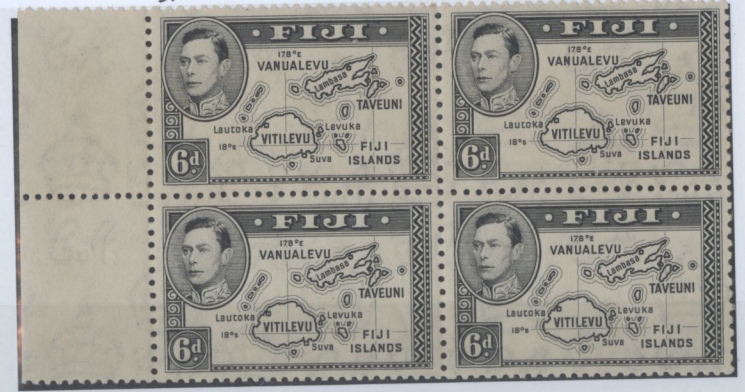


Style No. GK 102BK



Style No. GK 102BK

260 VF* ^{NH} ^{toned gum} ^{NH} 250- 240 Price



Style No. GK 102BK

266 b XF ⊙ block of 4

£ 300- Price



VF*
37-9 post SPECIMEN 175- Price



Style No. GK 102BK

SG 261a violet black VF * block of 4

inscription

3 (NH)

£ 120+ Price



£ 180- Price

44-75 VF * XND pairs £ 160-



1b, 2c, 3a, 4d VF*

87.50 Price

Nauru worn plate
13 LH XF

Cat. Price 80.00 Our Price



Style No. GK 102BK



341 010

NEW BRITAIN 30-3 VF* \$ 257.00 Price



NEW BRITAIN 01-2 VF* \$ 145- Price



52 8 VF app ⊙ sm. corner crease £ 900 Price



12 VF ⊙

100- Price

1857
52 9 no wntk XF ⊙ Cat. Price £ 180+ Our Price £ 90-



14 ⊙ black brown 130- Price



Style No. GK 102BK



Style No. GK 102BK

15 ⊙ 375- Price



Style No. GK 102BK

18 p13 525- Price



Style No. GK 102BK

17c milky blue p13 525 Price



Style No. GK 102BK

5652 rouletted 7 VF 900 Price



Style No. GK 102BK

56118 deep mauve p12 100 Price



Style No. GK 102BK

56125 0 what star 150 Price



Style No. GK 102BK

I have examined the enclosed stamp submitted as New Zealand marked

5685 VF pair 200 Price



Style No. GK 102BK

TRIAL COLOR PROOF Est 600 Price



Style No. GK 102BK

56218 0 blue advertising pair 200 setting 110 Price



Style No. GK 102BK

107/20 no 1 1/2 459 Price



Style No. GK 102BK

144-64 VF 4 312 Price



Style No. GK 102BK

56249-58 plus 253a VF 683 Price



Style No. GK 102BK

9 0 p12 925 Price



Style No. GK 102BK

5674 0 1.13 5.8 600 Price



Style No. GK 102BK

56112 0 100 Price



Style No. GK 102BK

56166 0 p12 brown lilac 750 Price



Style No. GK 102BK

56259 VF* top value no watermark 350 Price



Style No. GK 102BK

130e, 1e, 3e, 7e 610 Price



Style No. GK 102BK

131D VF (1) in piece 150- Price



466W, 467W white VF £280- Price



182-3 VF * 200- Price



Style No. GK 102BK

50 463-5 VF (1) £85- Price



Style No. GK 102BK

206/16 VF * 10 1/2, 1, 1 1/2, 3c

(NH) 300+ Price



536-64 VF * £170- Price



56 732, 732b Die I II £225- Price



Style No. GK 102BK

56 630 VF * (NH) £125- Price



Style No. GK 102BK

Scott 456c slate green wanted 350- Price



EW 200 ab buff omitted 85- Price



B3-4 VF * (NH) nl 200 £400+ Price



B4 VF (1) 75- Price



B5 VF * (NH) 55- Price



Style No. GK 102BK

B6 VF * (NH) 61 & 4 140- Price



Style No. GK 102BK

C1-4 VF (1) 102- Price



Style No. GK 102BK

J5-7, 11 * 275- Price



Style No. GK 102BK

029 VF ⊕ 150- Price



051 VF * 125- Price



SG-D134, 6, 7, 8, 40 VF * 3 1/2 (118) (127) £141- Price



Postal unpriced cancel £1000- Price



AR78/96 121- Price



Style No. GK 102BK

AR91, 94 VF ⊕ 275- Price



Style No. GK 102BK

AR93 VF * (NH) 150 for 4 £1300- Price



Style No. GK 102BK

AR97 VF ⊕ 52- Price



Style No. GK 102BK

AR48, 58 VF * 94- Price



AR57 VF * 250- Price



AR63 VF * 2 400- Price



AR71-3 VF * 213- Price



SG 79-82 VF * £750- Price



Style No. GK 102BK

SG 104 VF ⊕ 56 1/2 Price



Style No. GK 102BK

Samoa AR101 Mi 8 VF ⊕ block at top £260 Price



Style No. GK 102BK

SG 166a VF ⊕ £320- Price



Style No. GK 102BK

SG 194a VF* ^{thin head} ppr £180- Price



unlisted £10 Postal Fiscal VF* Est 800+ Price



K 102BK

SG 22 var broken h dropped f £150 Price



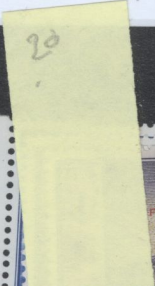
Style No. GK 102BK

SG 71s-8s*

£100- Price



SG 011-16 VF* (with o11a) gum facing £1486 Price



Style No. GK 107BK