

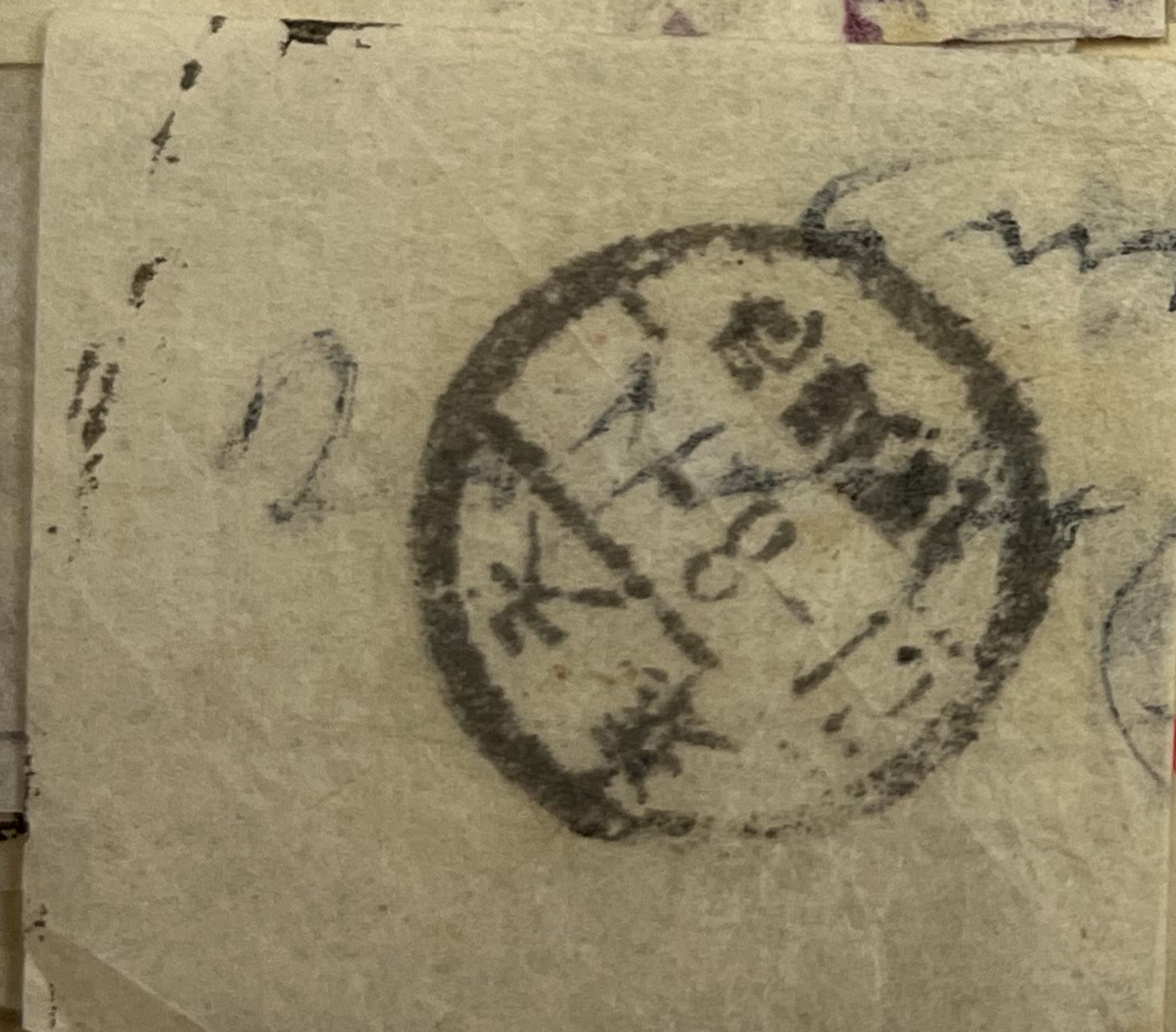
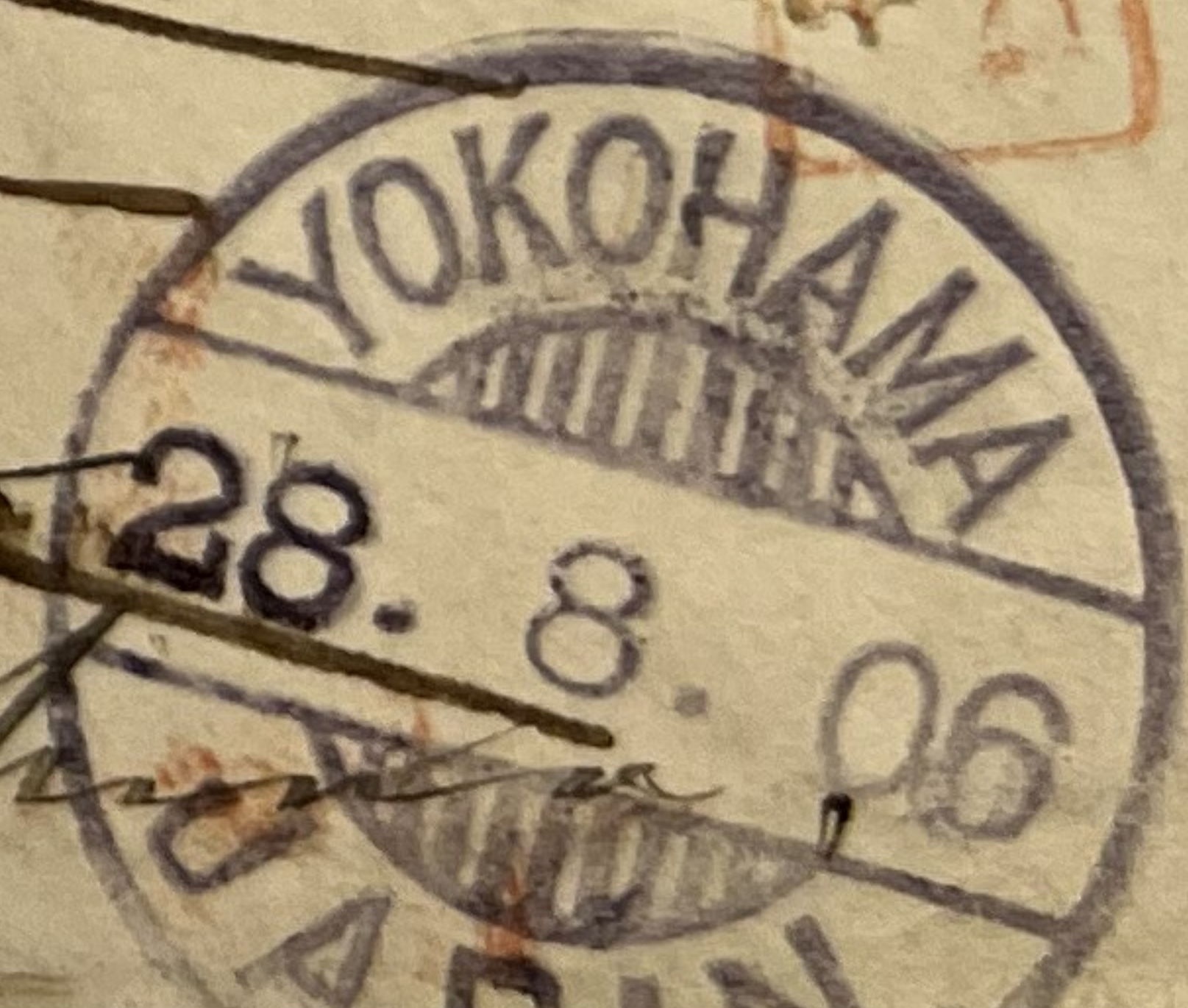
Army



UNITED STATES OF AMERICA.
R YOKOHAMA
No. 420
WASH. 541

~~Return to Sender
at Risk~~

544 Marked 28. 8. 06
19418



R 28/1

項事調取先送廻

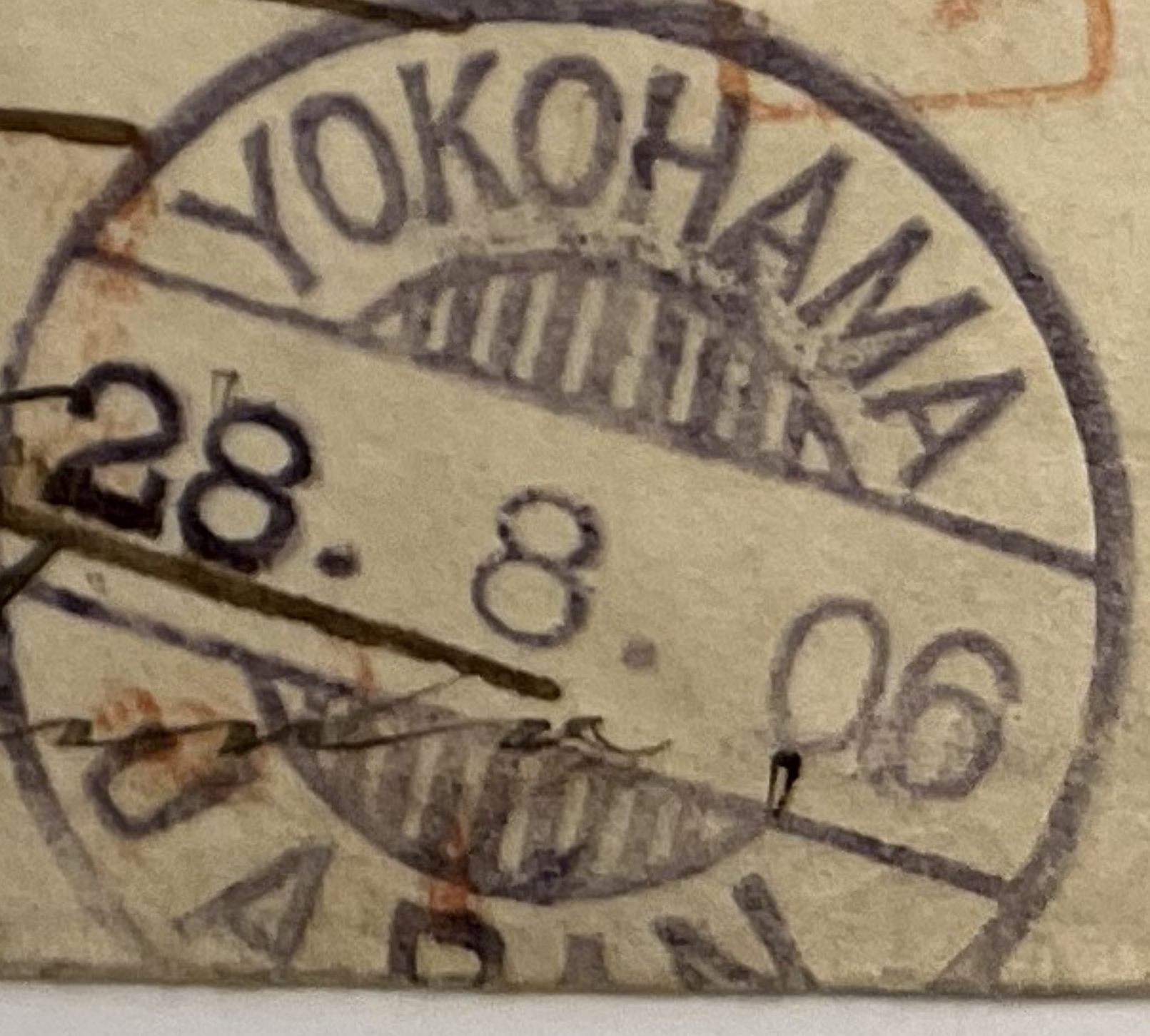
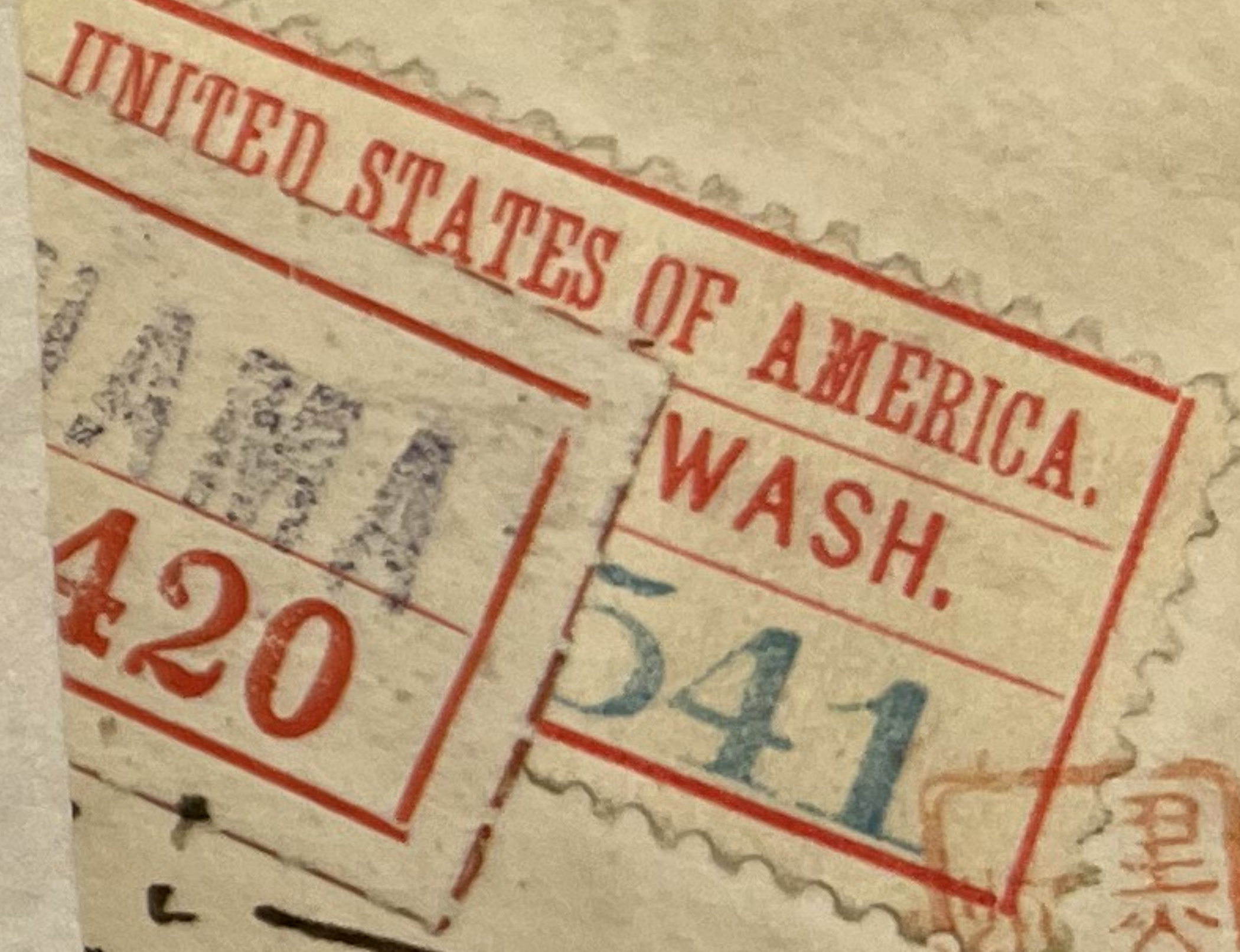
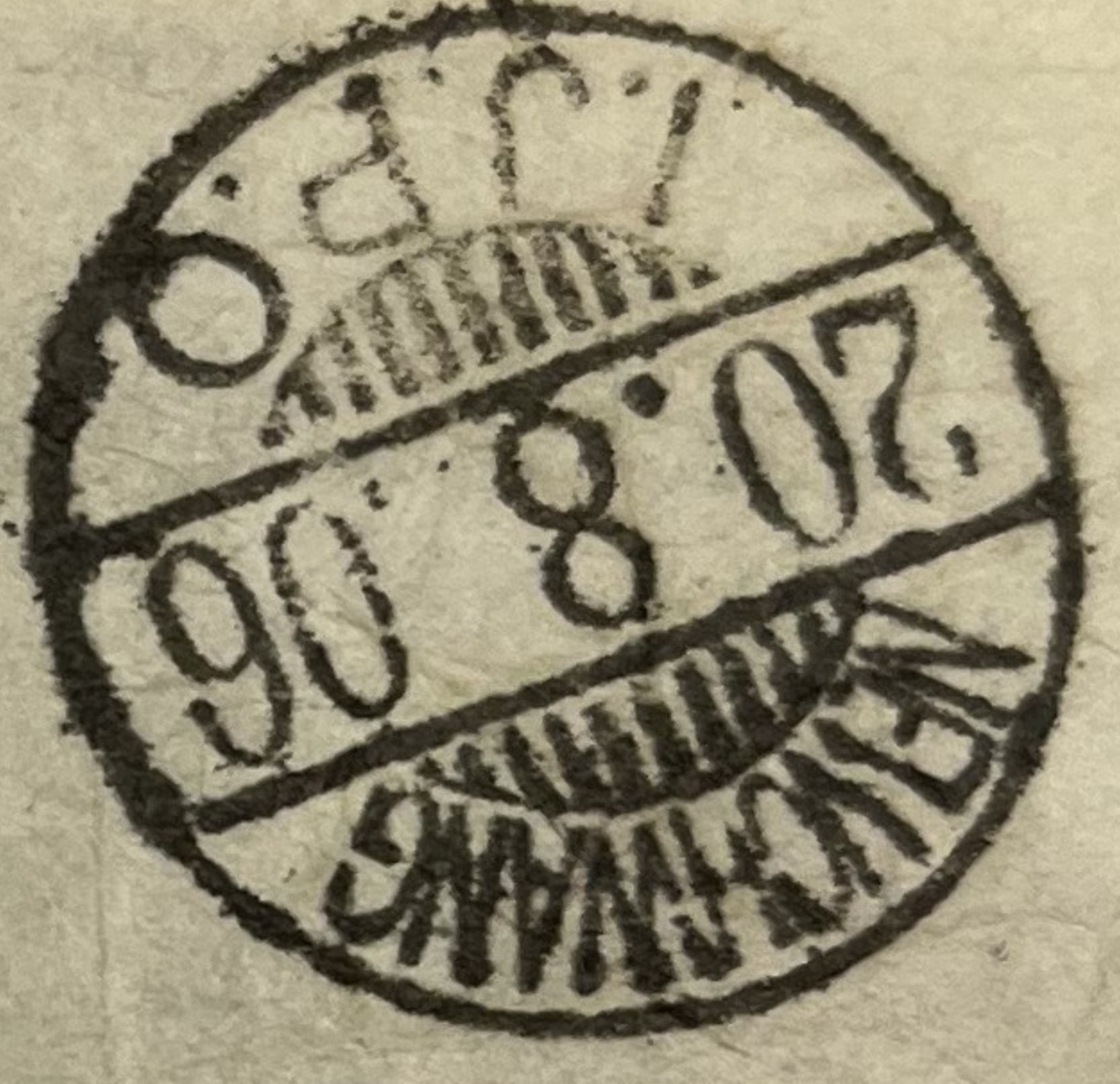
左記ノ事由ニ依リ持戻候也

明治 年 月 日

後信屋敷行牛莊郵便局配達人
出付人 〇〇〇

局 廻戻

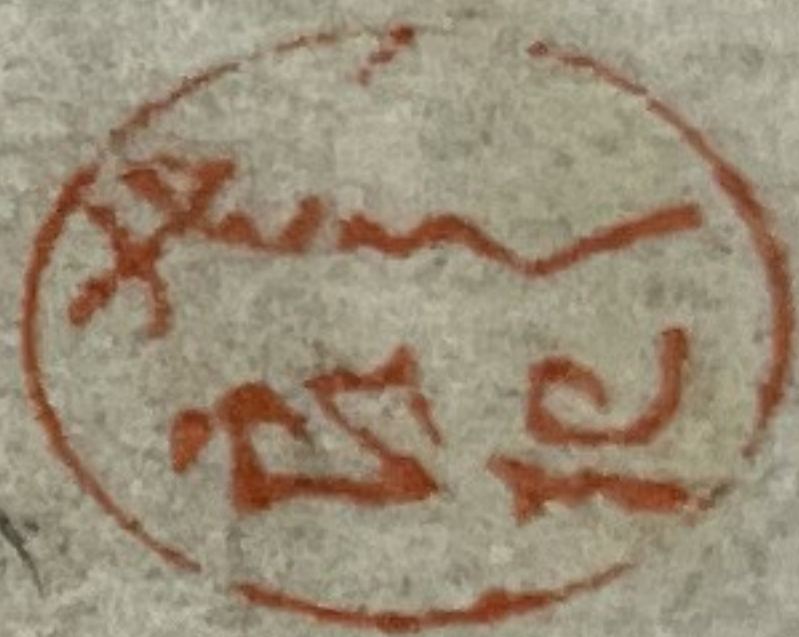
印 附 日



Handwritten numbers: 128

19418

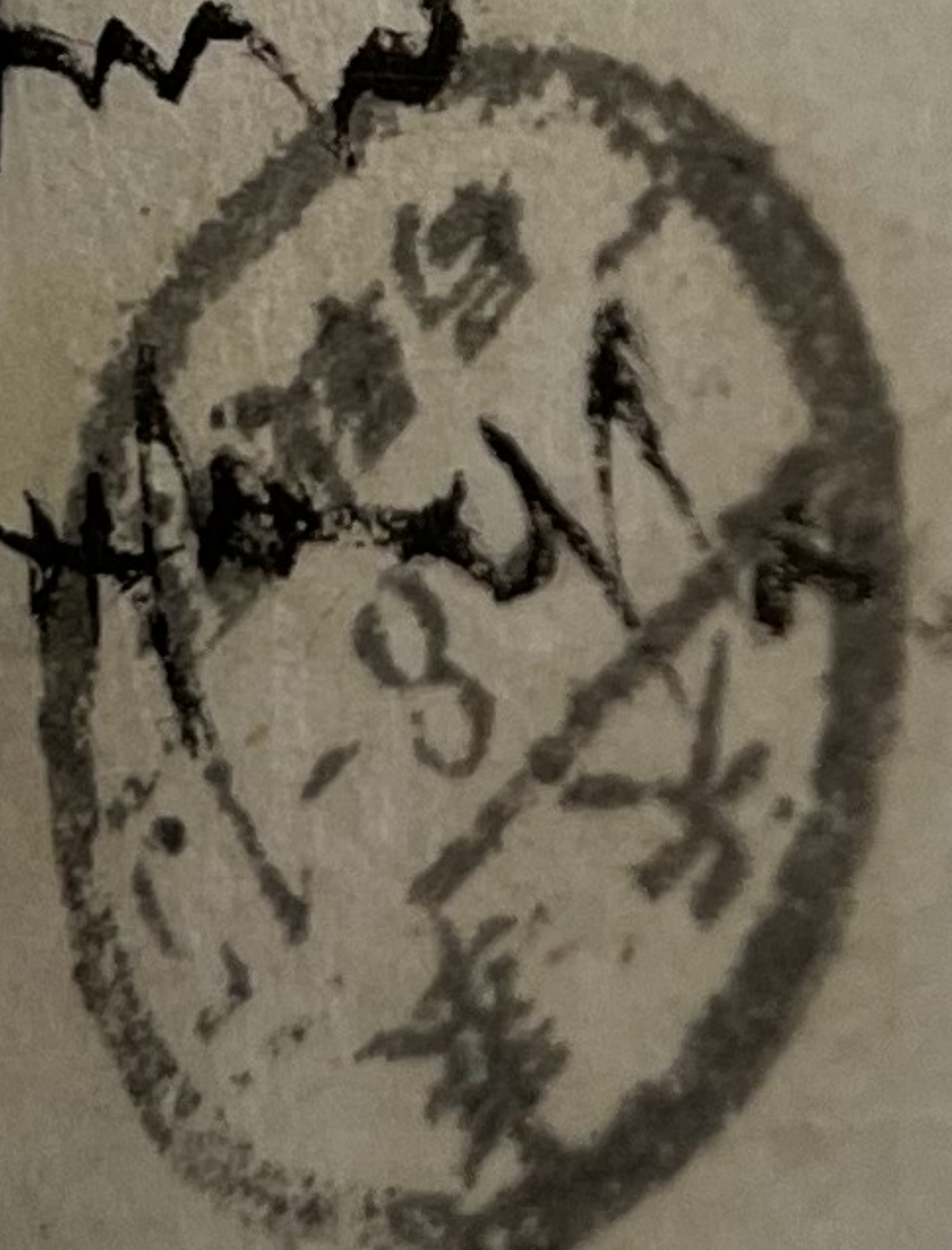
Handwritten Japanese calligraphy on the top flap of the envelope, including characters like "東京" (Tokyo) and "郵便" (Post).



SAN Y

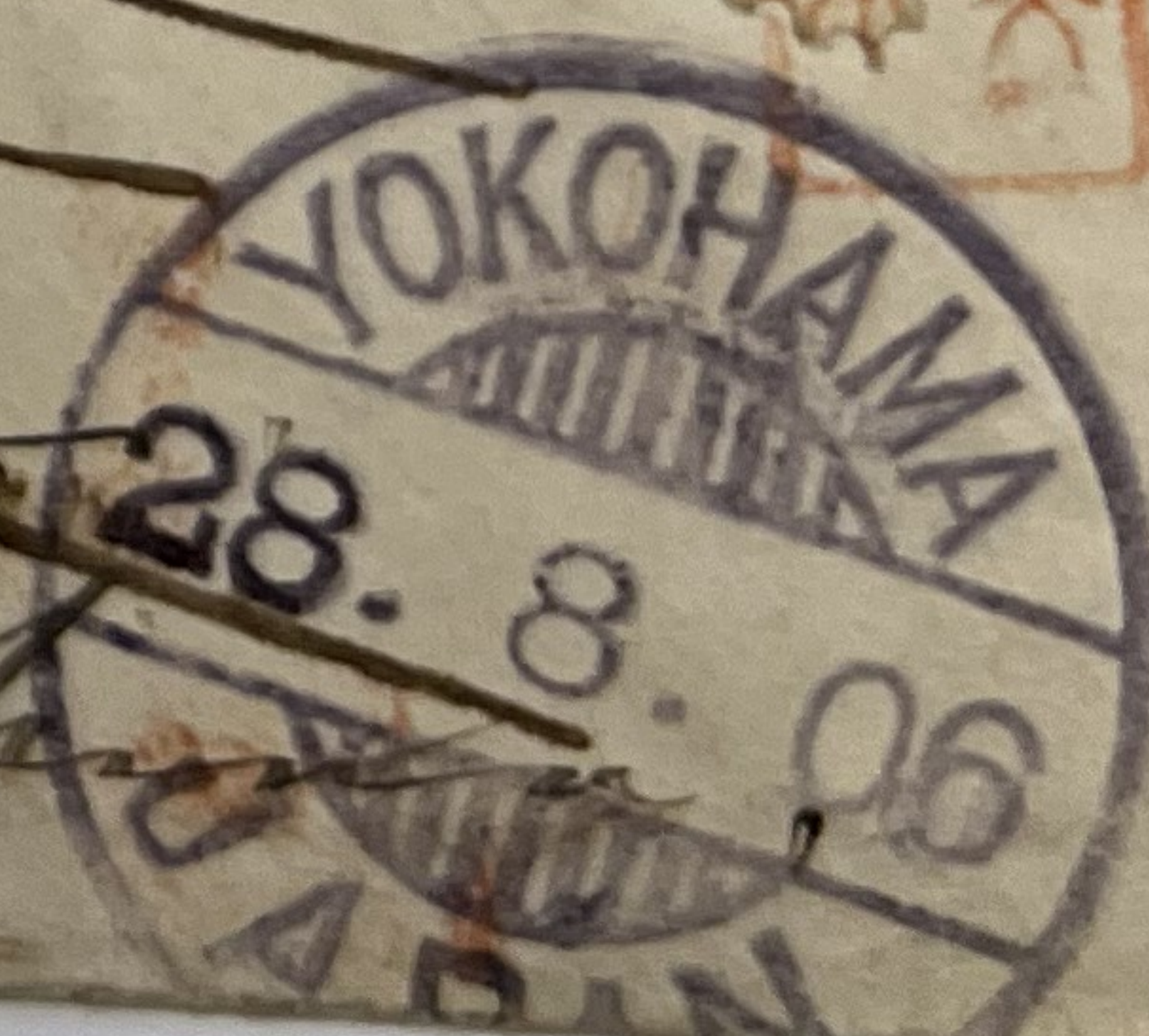
Vertical handwritten Japanese text on the left edge of the envelope, possibly a return address or recipient name.

Large handwritten Japanese calligraphy on the main body of the envelope, including characters like "東京" (Tokyo) and "郵便" (Post).



Red rectangular postmark from the United States of America, Washington, D.C., with the number 420 and a date stamp 541.

Handwritten text in cursive script, possibly "Under Order" or similar, written over the red postmark.



Handwritten text in cursive script, possibly "W. H. ...", written below the red postmark.

118

Handwritten Japanese characters at the bottom of the envelope, possibly "東京" (Tokyo).

VF #306 PAIR Tied by "FORT DES MOINES, IOWA"

"JUL 10, 1906" To # U385 Entire to Japanese

OCCUPIED MANCHURIA, CHINA, WIFE

Rice Paper Forwarding Slip

BACK TO U.S.

Rare Print to USA

