

VI.A.
1-2.



Sc 2
B/172
CXL



Sc 3
B/172
CXL



Sc 14



Sc 6
B/172 CXL



Sc 8
DAMAGED



Sc 10



Sc 11



Sc 12



Sc 13



Sc 15



Sc 16



Sc 17



Sc 18



Sc 34



Sc 35



Sc 43



Sc 45



Sc 47



Sc 49



Sc 50



Sc 51



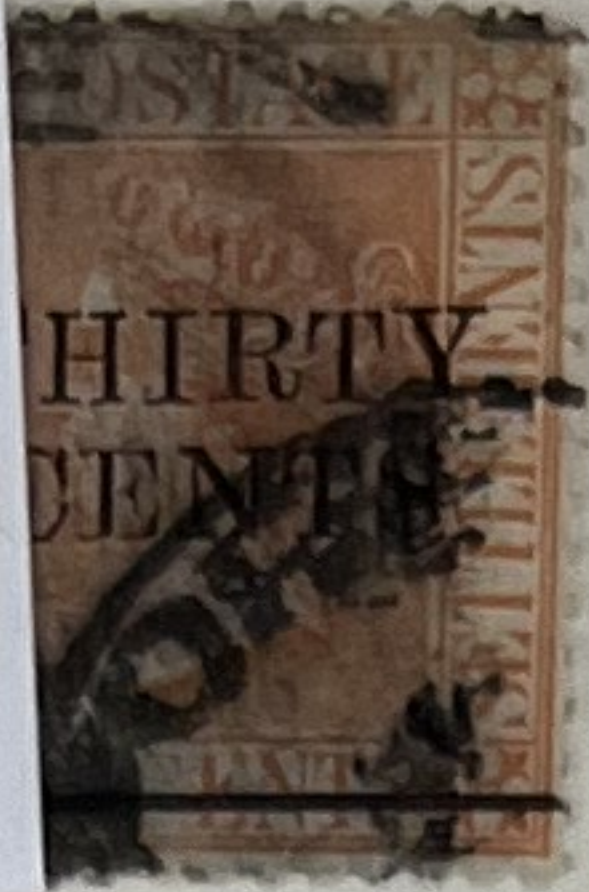
(#25)
Sc 60



SC75



SC76



SC80



SC83



SC84



SC85



SC86



SC87



SC89



SC90



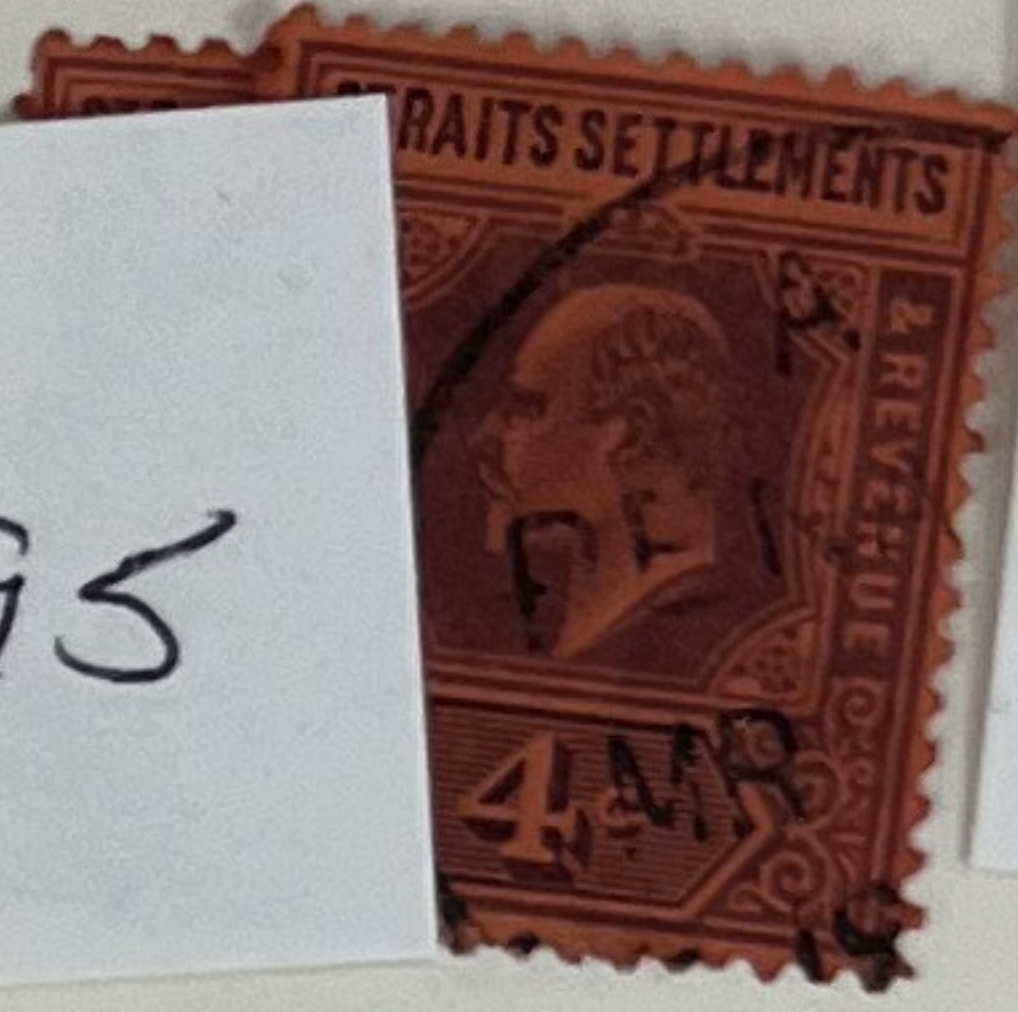
SC91



SC93



SC95



SC96



SC97



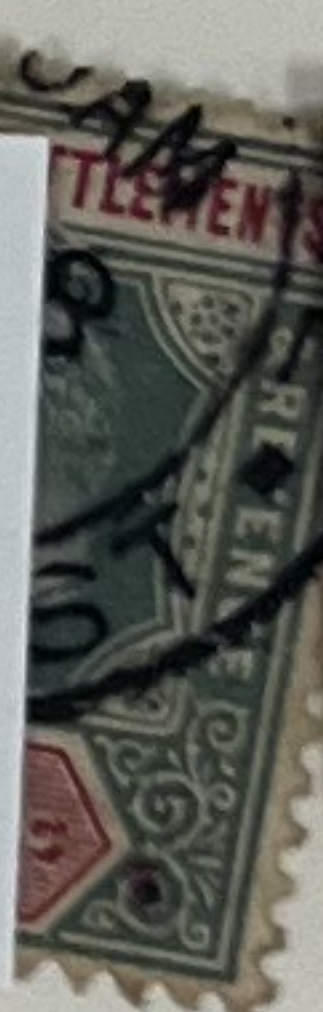
SC98
(YELLOW PAPER)



SC100



SC101



SC105



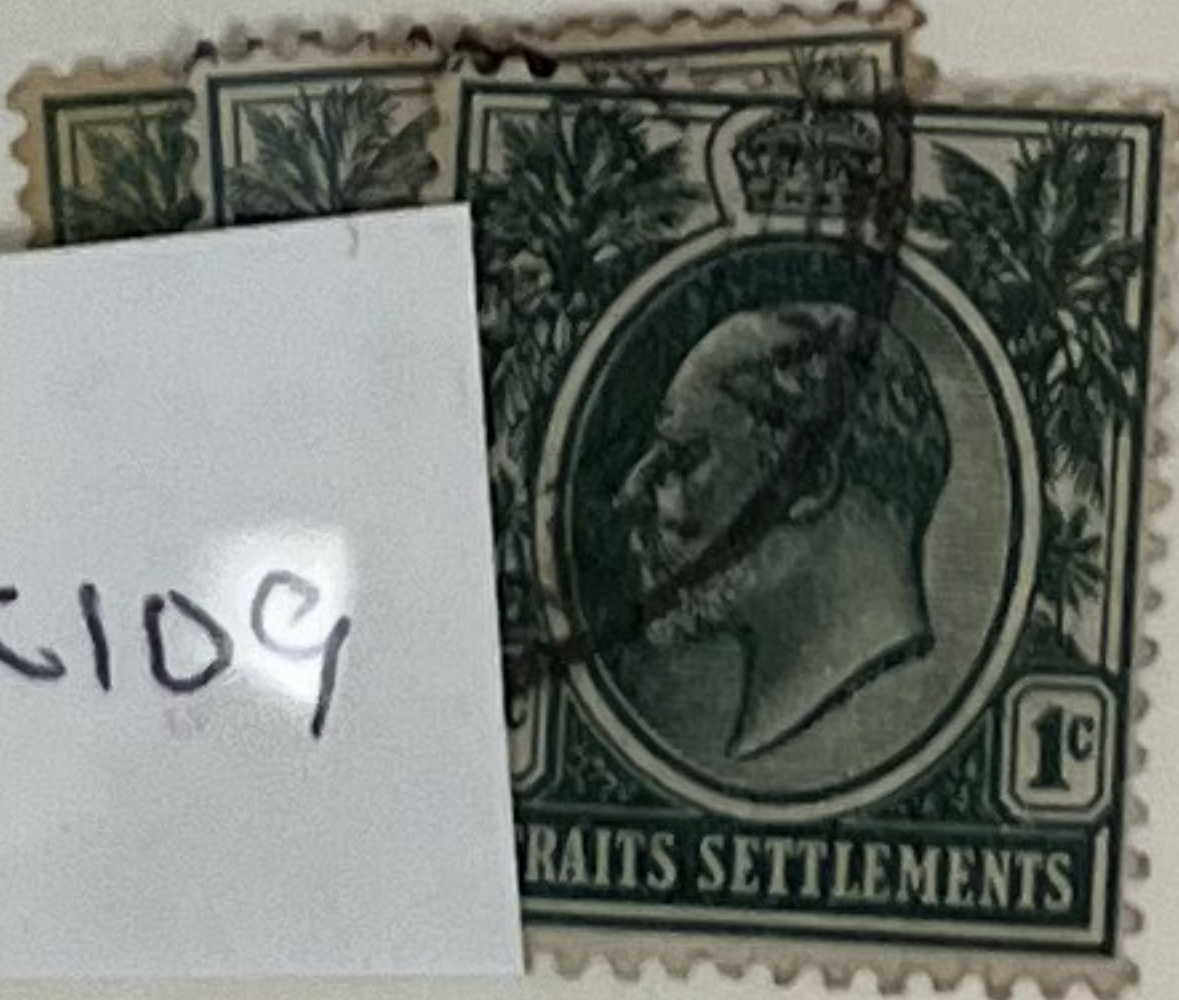
SC107



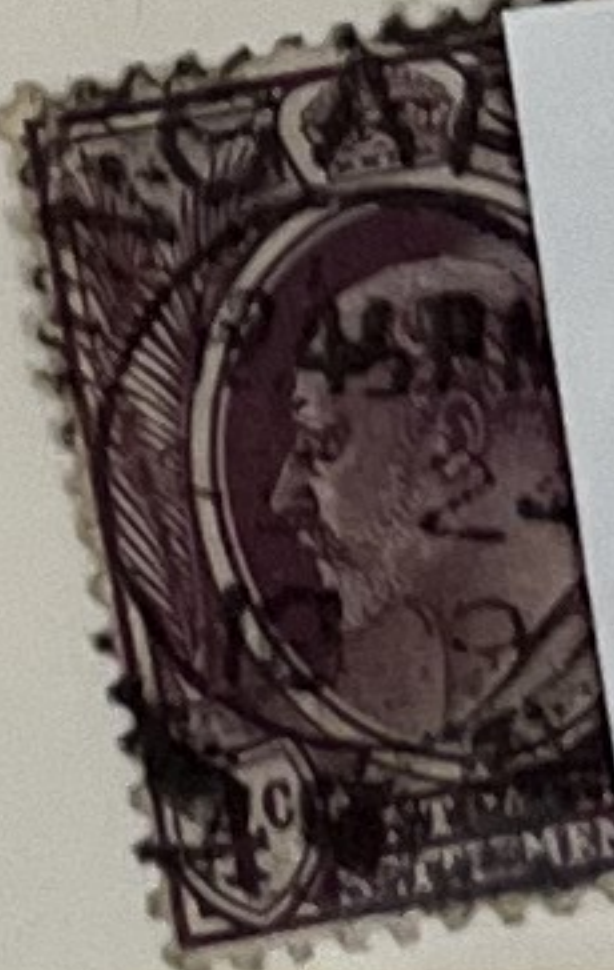
SC108



SC109



SC118



SC120



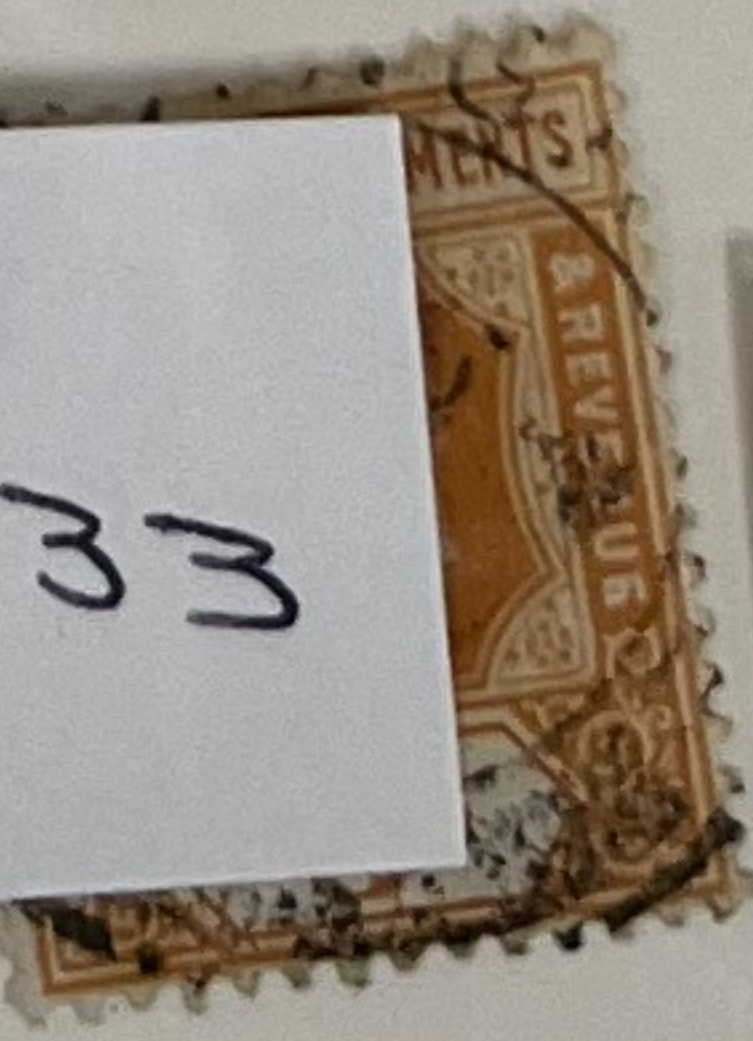
SC122



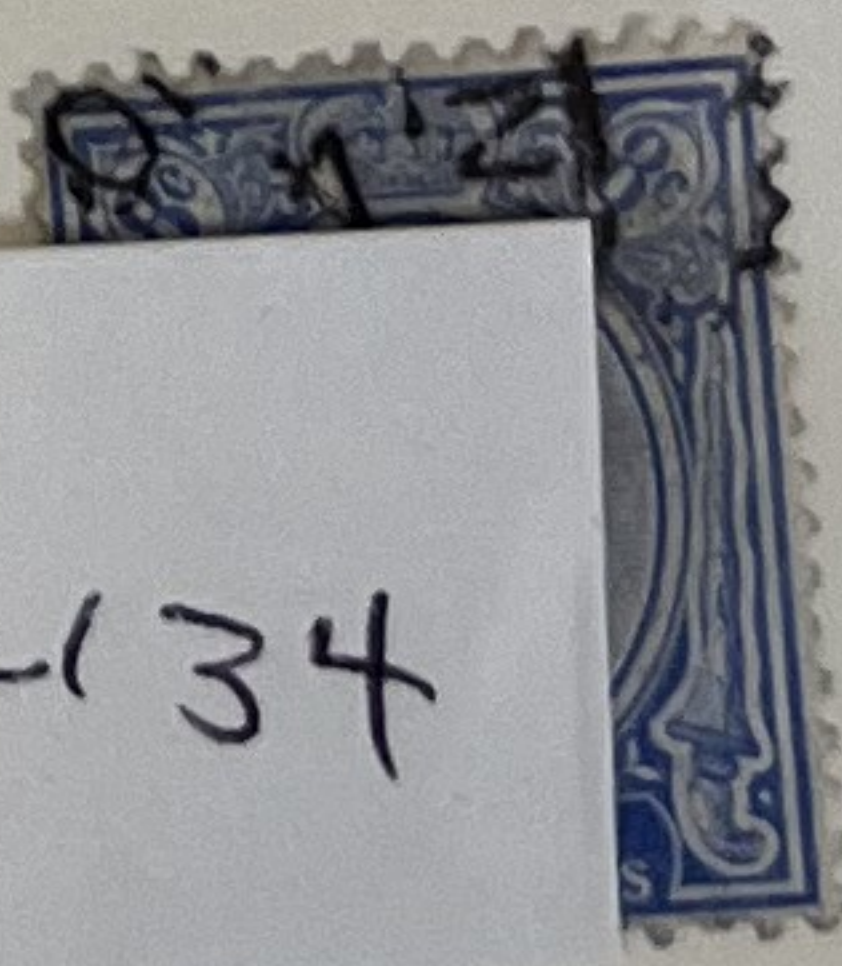
SC130



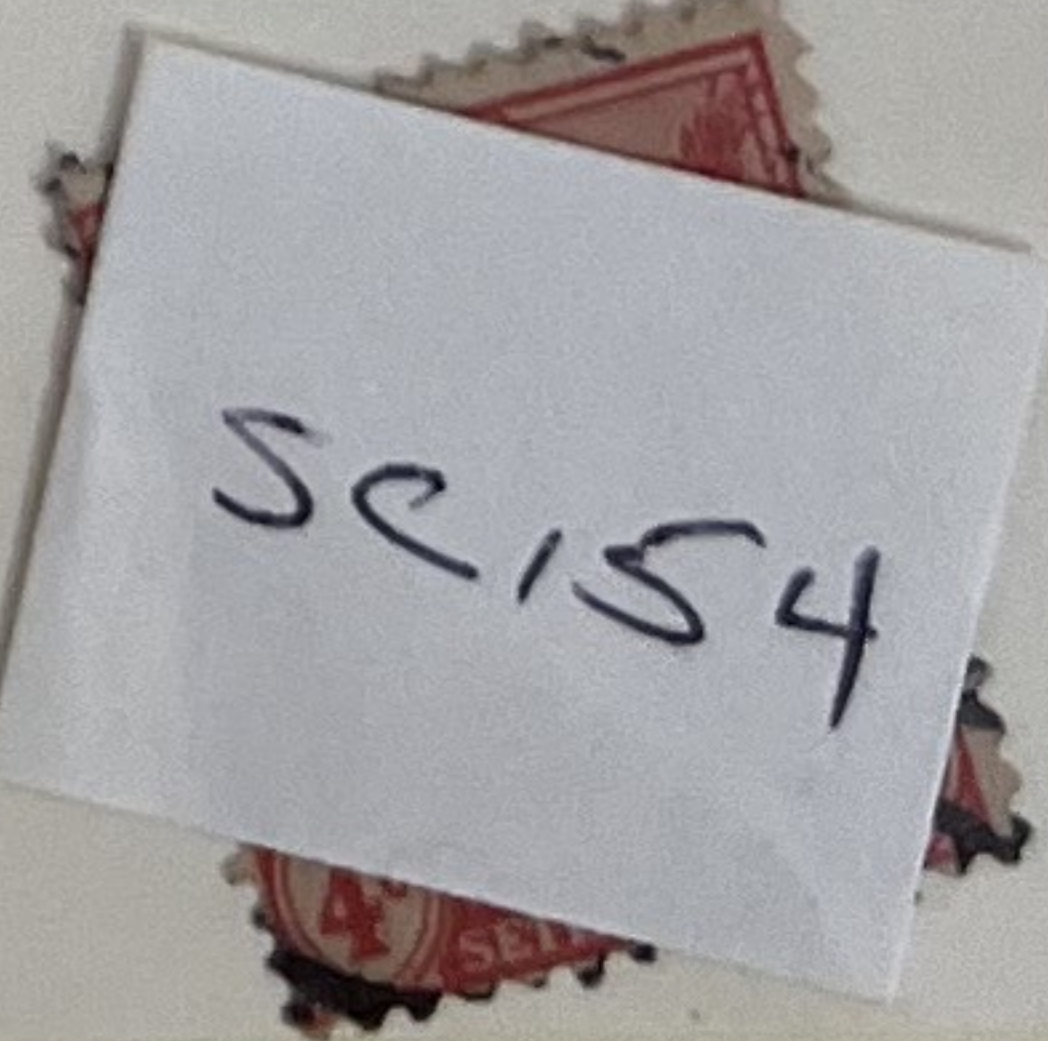
SC133



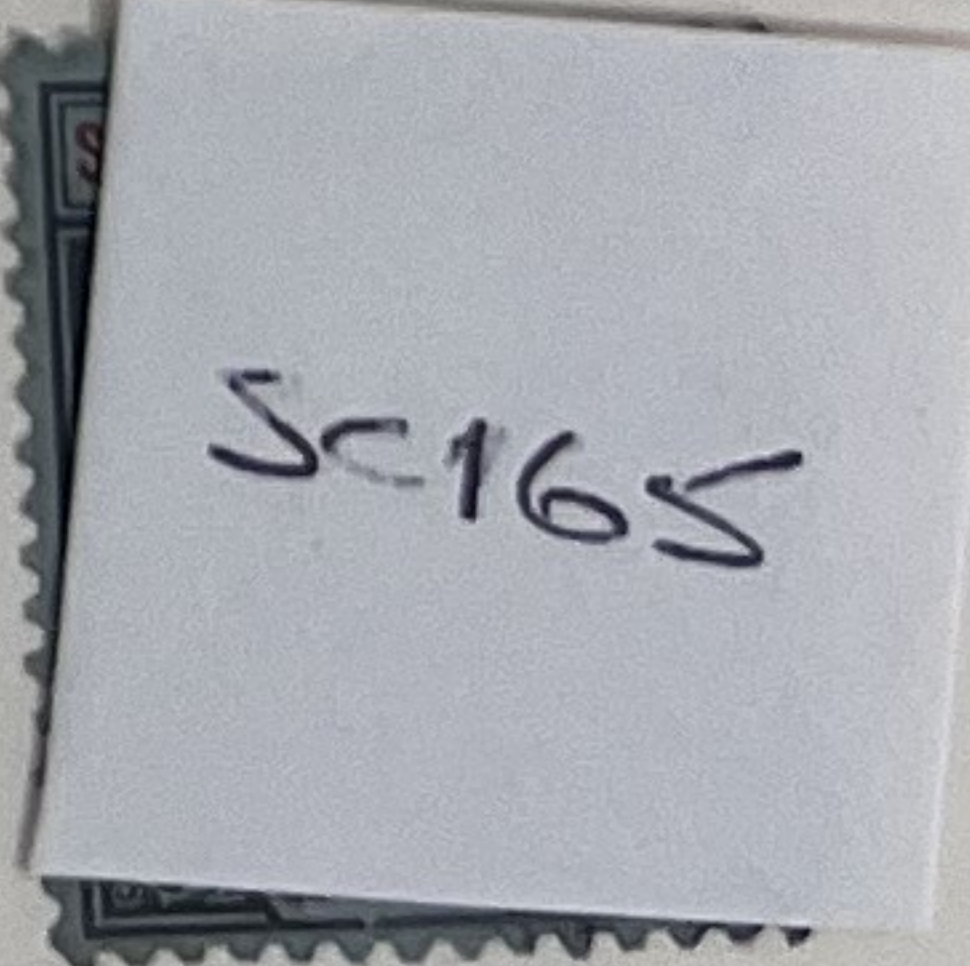
SC134



SC154



SC165



SC168



SC184



VI. A.
1-1.

SC16



SC20



SC20a





509a



Post
1966:

To open cut at top

BY AIR MAIL

ADELAIDE
1947
23 JAN 2
11-AM

AIR LETTER

PREVENT



MR C. T. CHIN

Box 173 G.P.O.

KUALA LUMPUR
MALAYA.

4