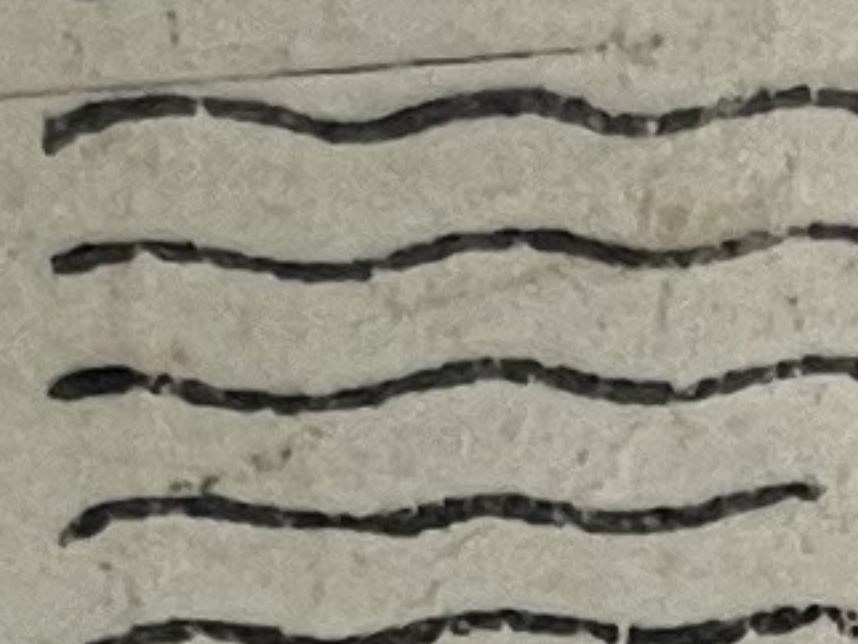




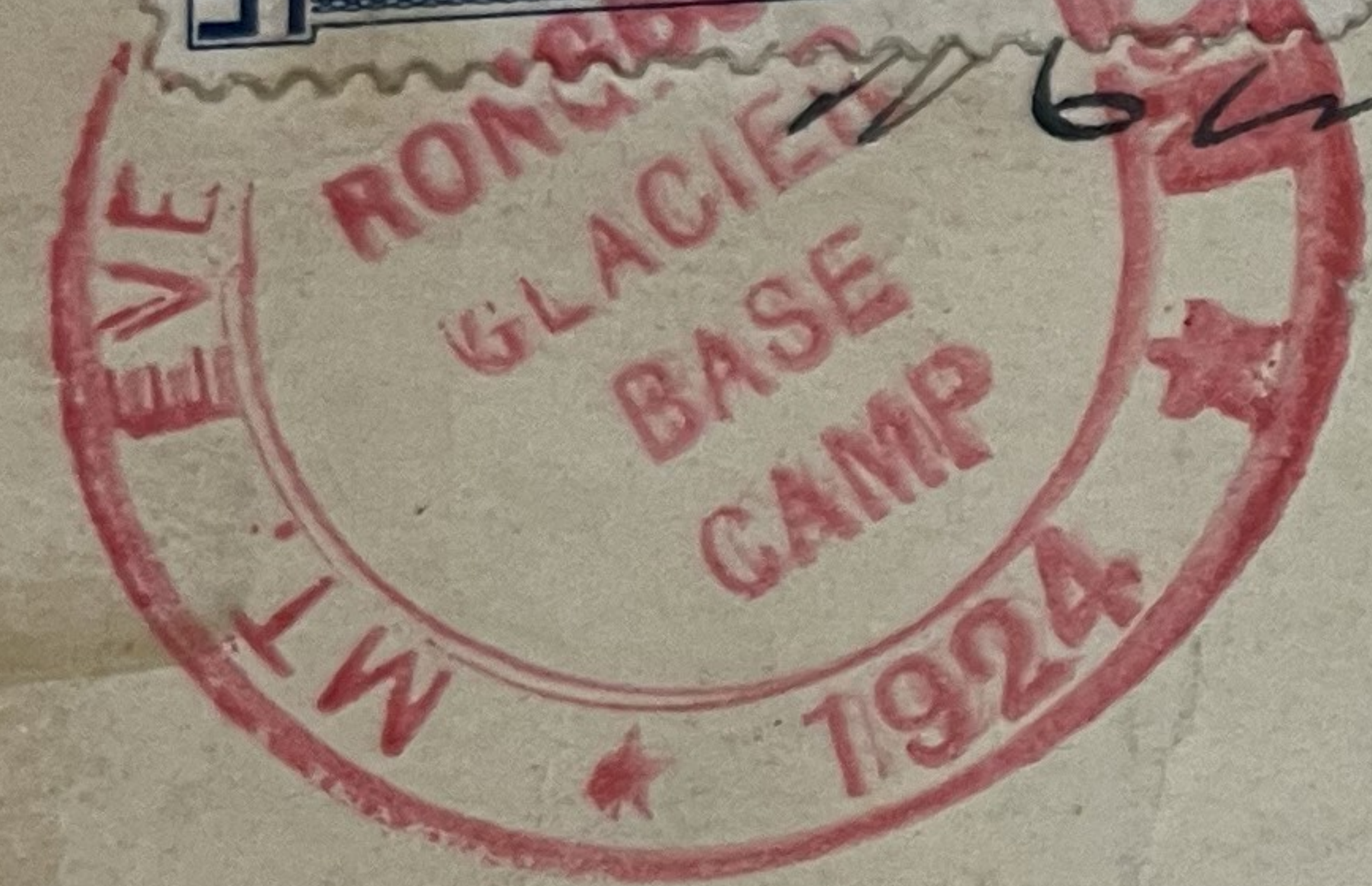
CUTT
15 HRS
OF
324
FOR

POST CARD BRITISH EMP



EXHIBITION 1924

6/19/24 Banwell



Kenneth

Bucks. Avenue

Olney

Watford

Eng



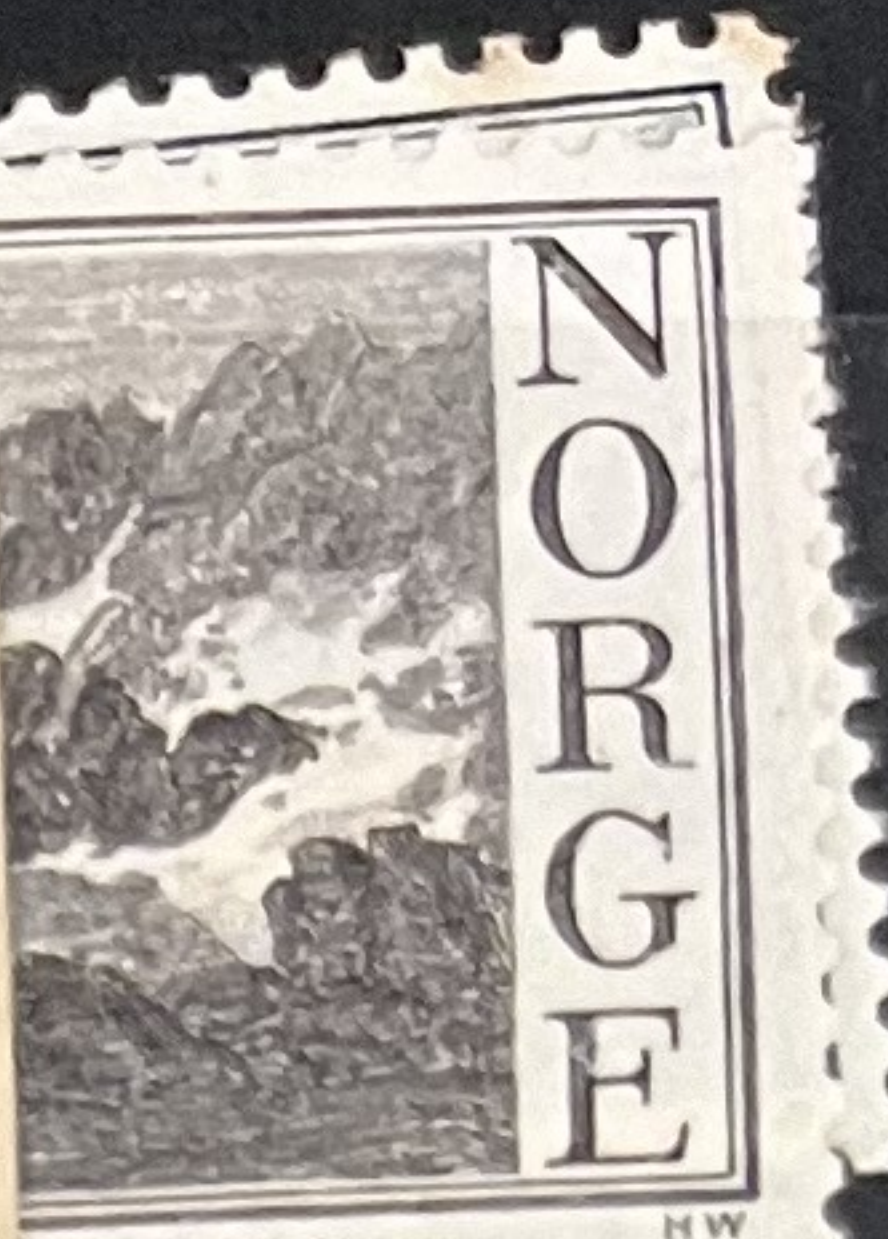
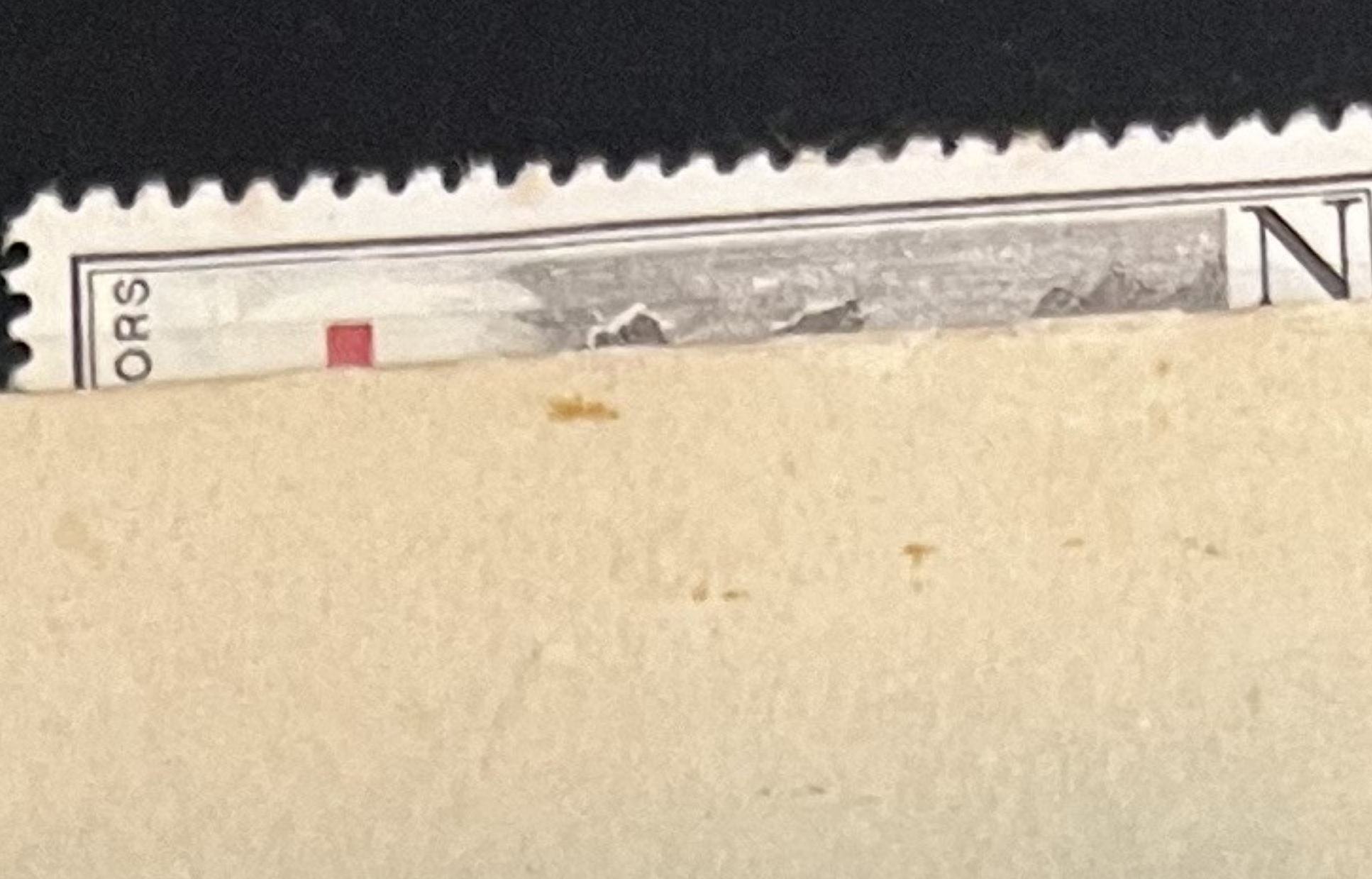
Maji Sailey

Pharjong

Tibet







Gebr. Künzli Zürich Déposé No. 2211

HELVETIUM
AUG 21 1911
5 530 P.M.



Châlets im Zermatterthal

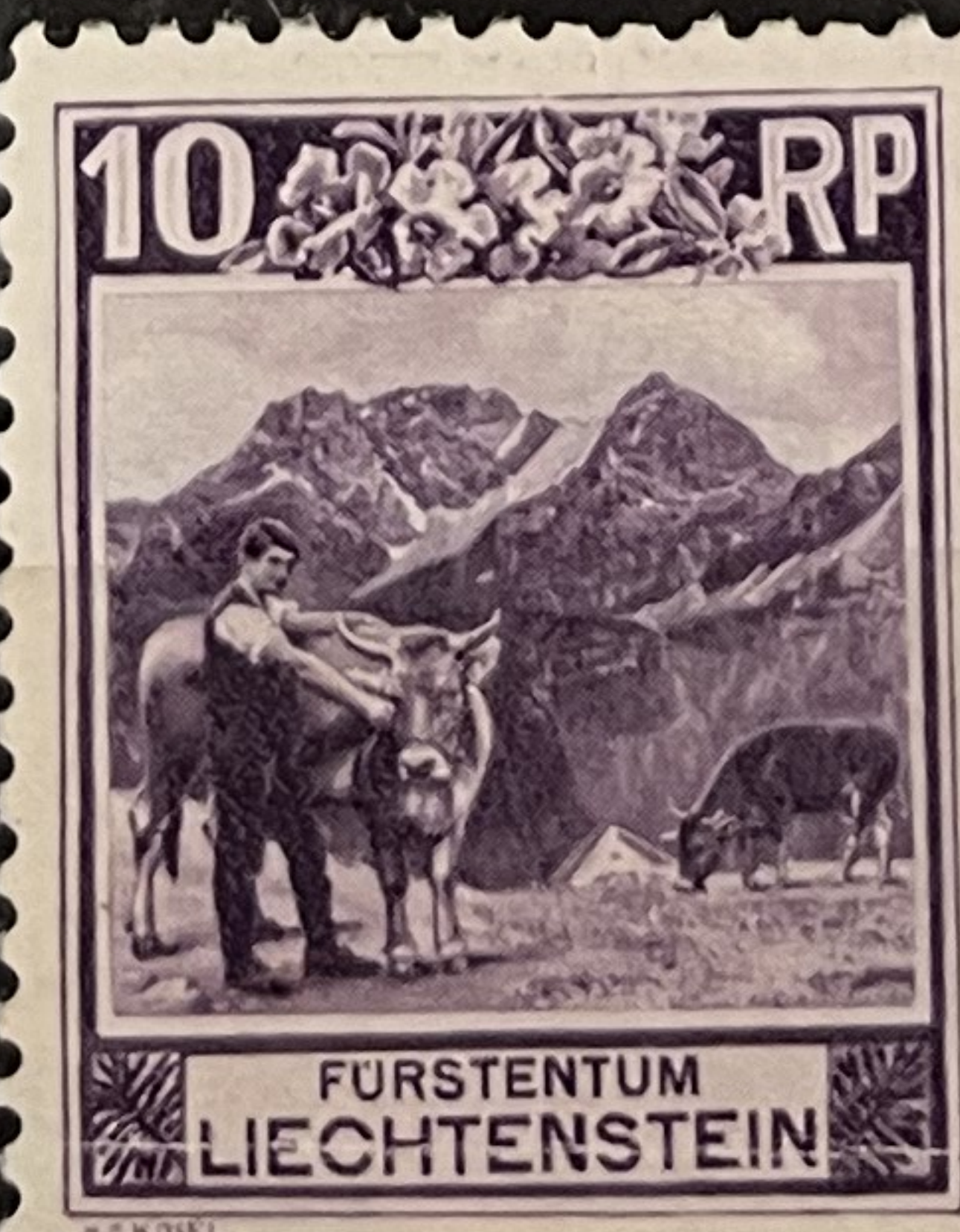
A greeting from Zermatt!
wish you were here to climb
mountains with L. We have
fine views of the Matterhorn
here. all well. Mother.

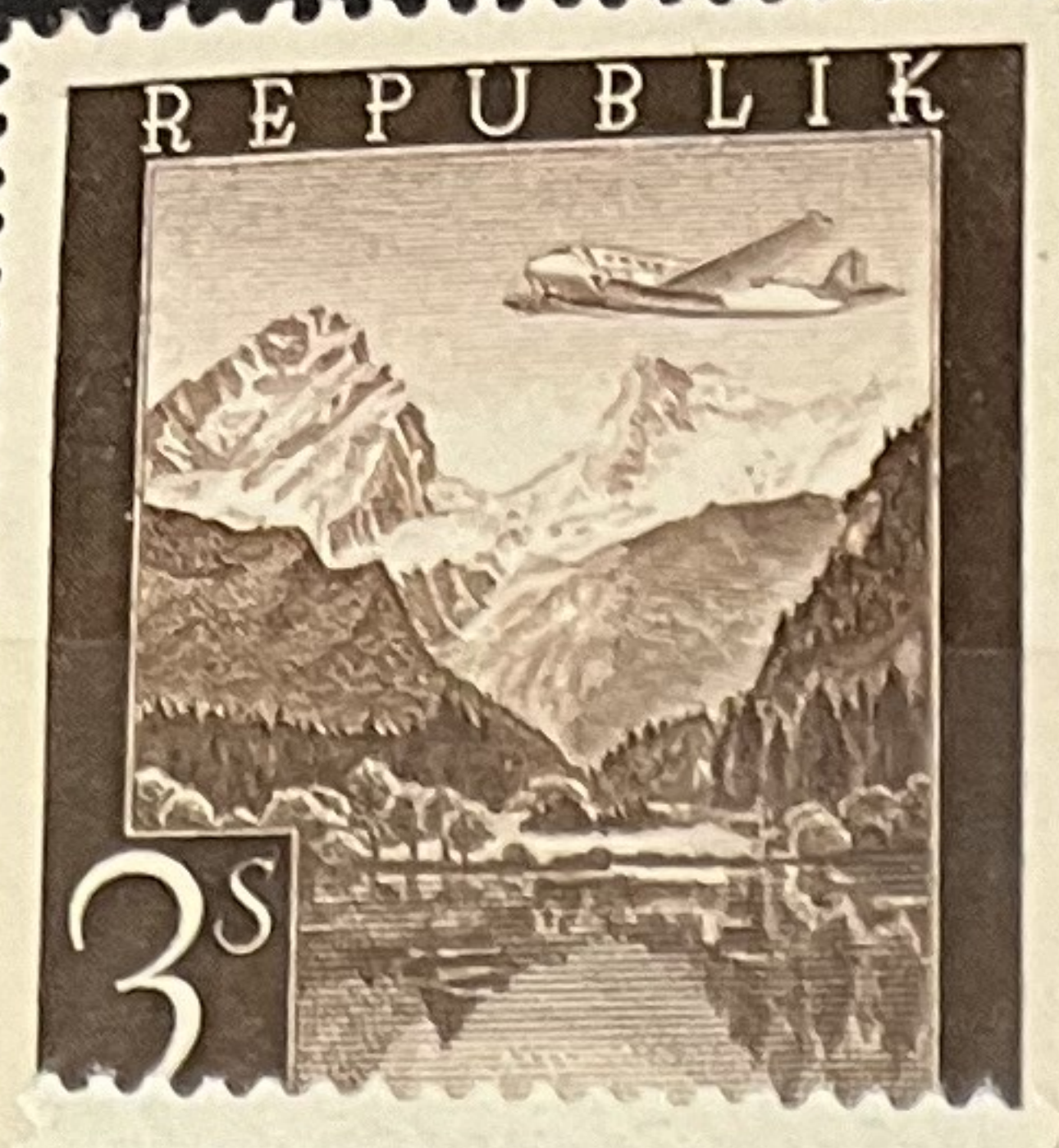












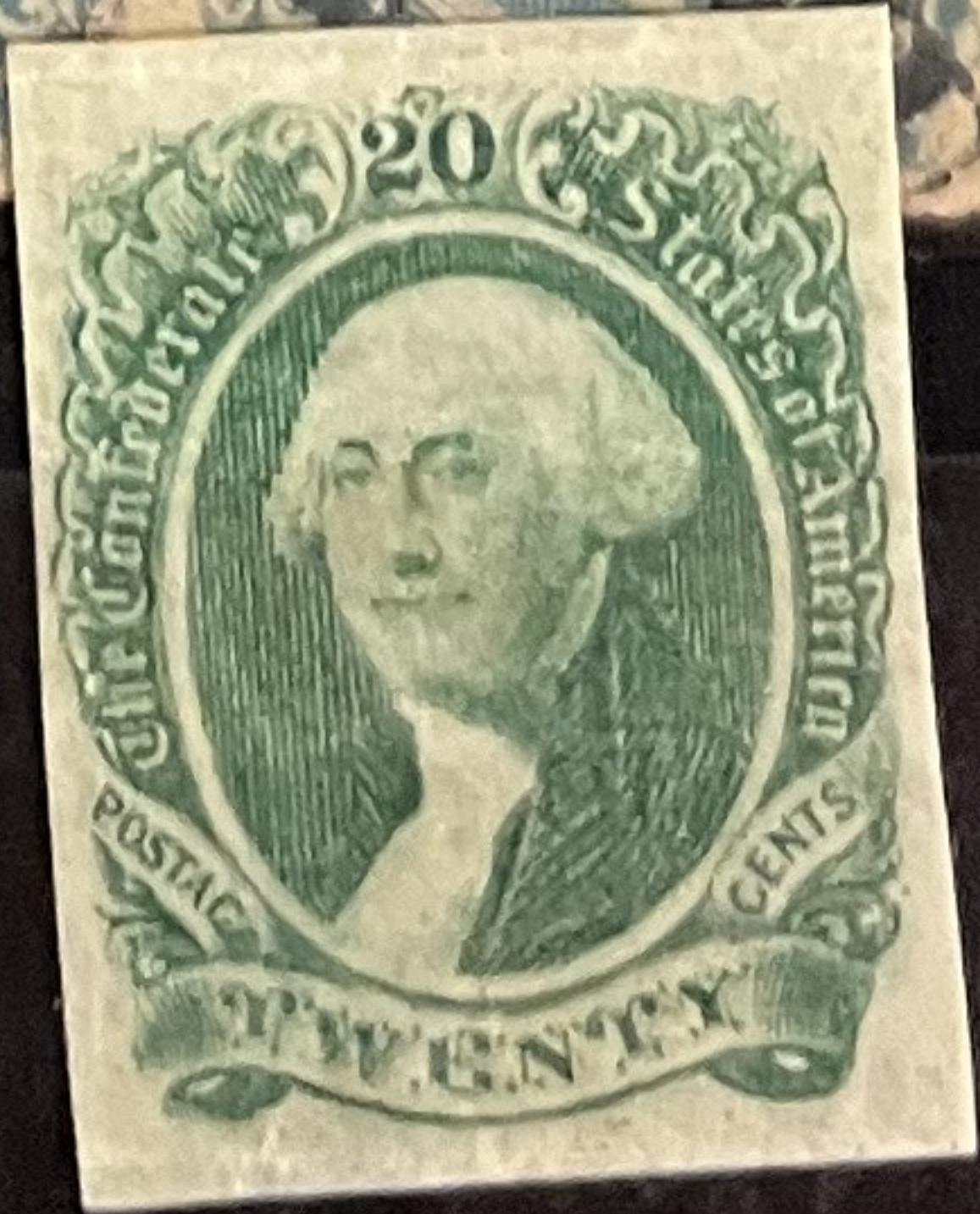
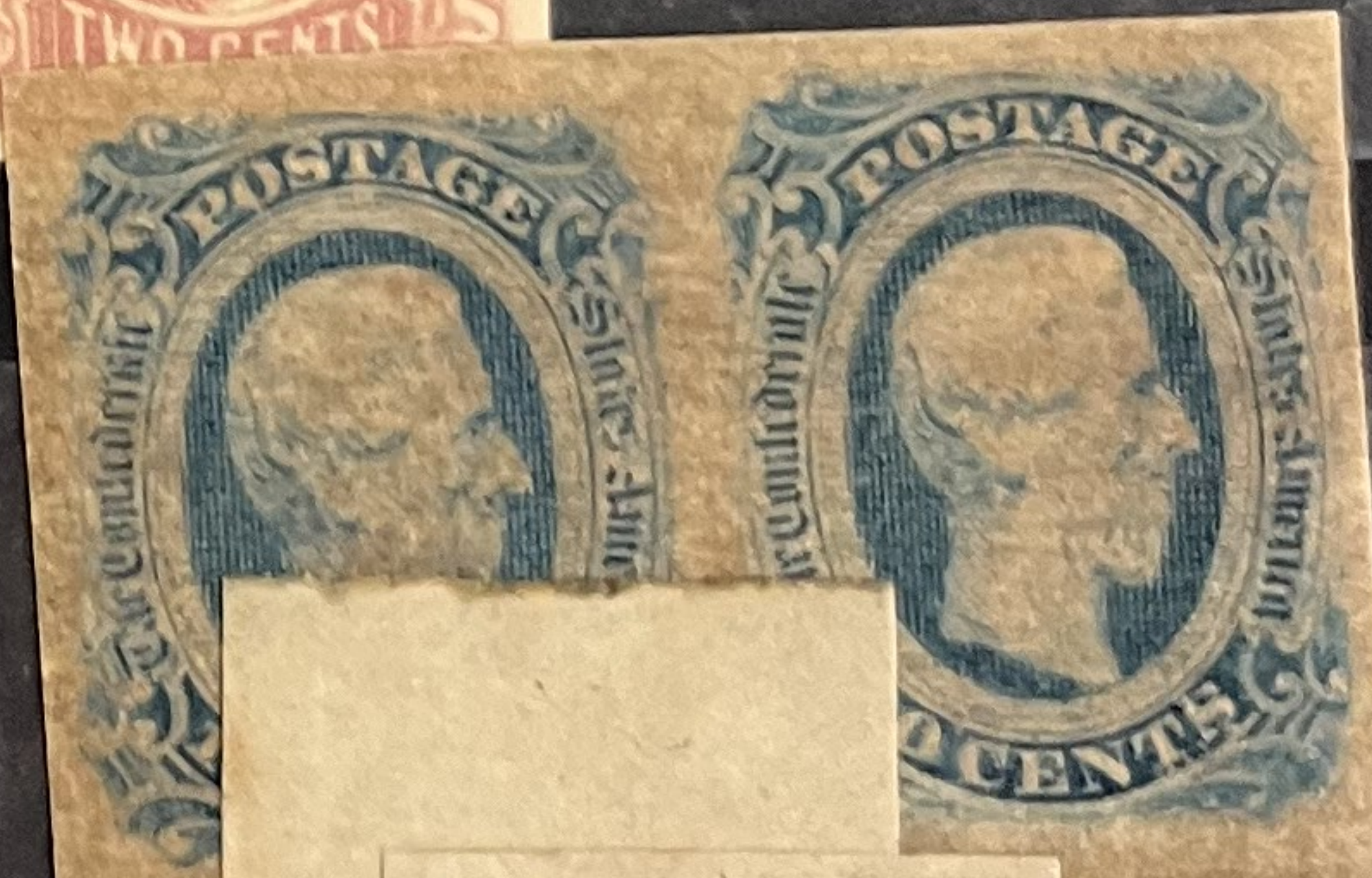
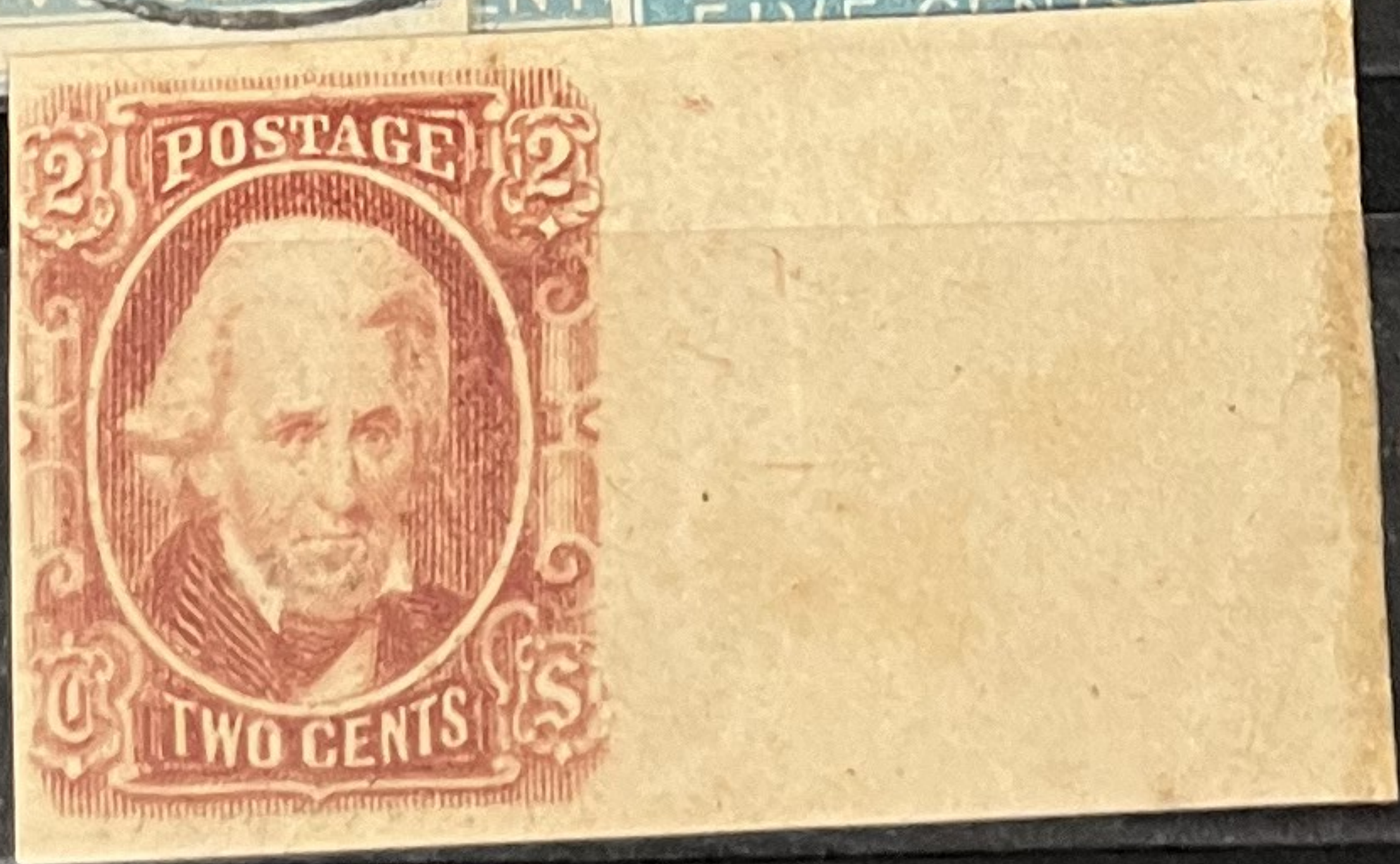
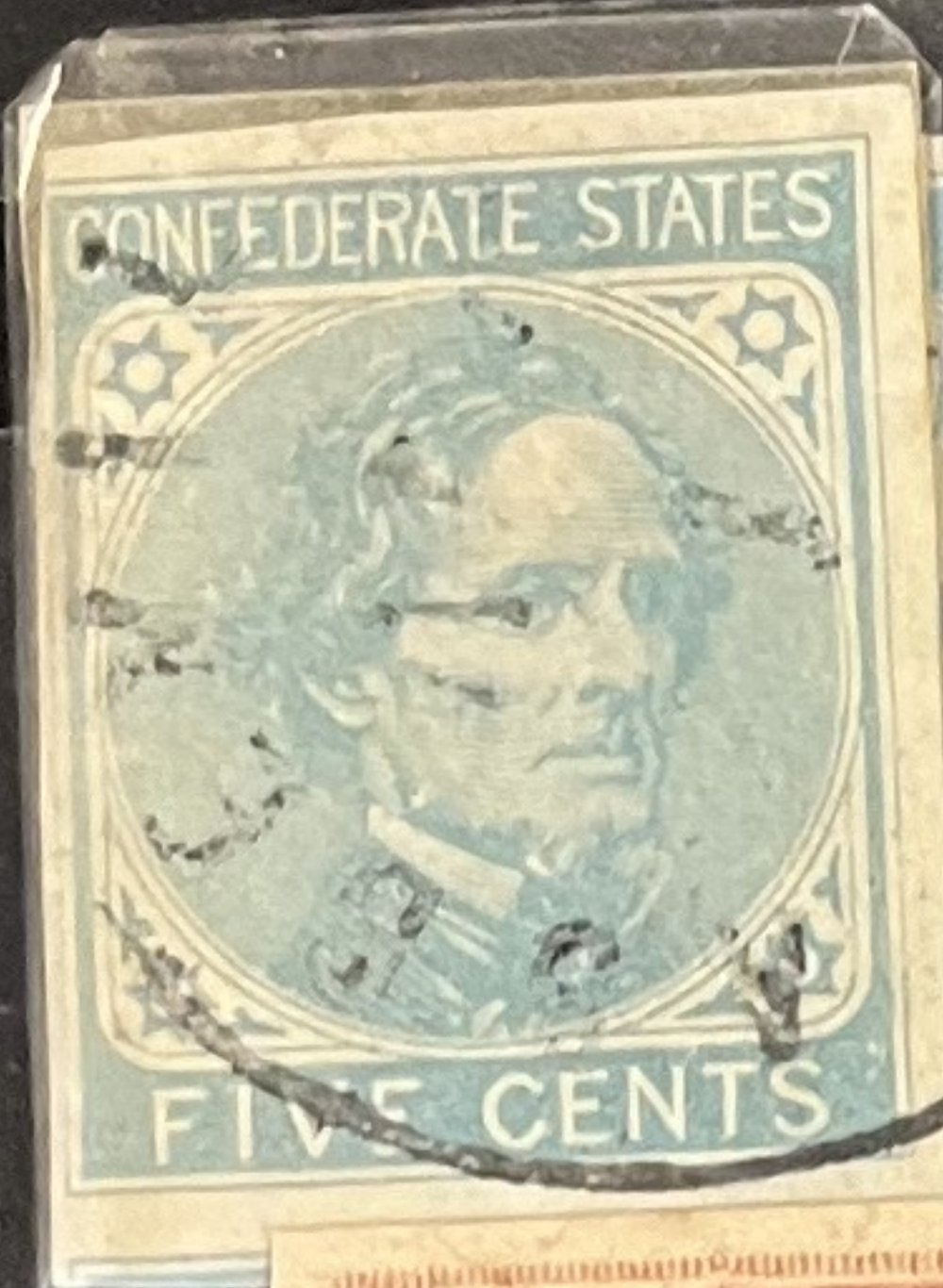
90'00





Ausgabetag
Jour d'émission
Giorno d'emissione
1. VI. 1965







X SOCIAL DAY

DECEMBER 20, 1967



HELP NATURAL DISASTER'S VICTIMS







ATLANTIC CITY STAMP CLUB

SPONSORED BY THE



A. P. S. CHAPTER 105

AT THE HOTEL MADISON







DE LA RUE & COMPANY, LIMITED.
+

DE LA RUE & COMPANY, LIMITED
+

