

Per Elbe  
VIA ENGLAND

NEW YORK  
OCT 29  
7 PM  
86



Direction au P. is conto Gesellschaft

MULLER, SCHALL & CO.  
OCT 29  
1886  
NEW YORK

Berlin  
Germany

Per Augusta Victoria

NEW YORK  
DEC 11  
7 PM  
95



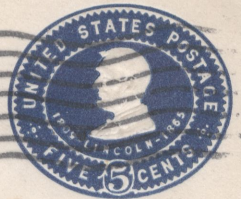
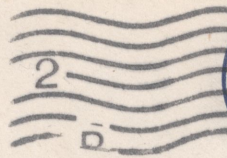
VIA ENGLAND

From Julius Albert

Düsseldorf  
Germany

Per "Deutschland."

NEW YORK  
AUG 23  
PM  
1905



VIA ENGLAND

MULLER, SCHALL & CO.  
AUG 23  
1905  
NEW YORK

J. A. Merville  
Frankfurt  
Germany

HALLGARTEN & CO.,  
NEW YORK, N. Y.

ETRURIA.



*Direction via Discounts, Ges.*

*Berlin, M*

*N<sup>o</sup> 114 & B 20 K  
Germany  
Jurnal 7 = 160:89*

Per Etruria.



*From Anheuser & Söhne  
Brennmasch  
Germany*



Per Germanic.

*n<sup>o</sup> 95. Wall. G. 1887  
type I. A. d.*



*Anglo-Oesterreichische Bank  
Wien  
Austria*



*U 330*

Per Republic.



*For J. Schultze & Warden*

*Premier  
Germany*

TRANSATLANTIC  
SS  
COVER

125

8797

SCHULZ & RUCKGABER,  
P. O. Box 257,  
NEW YORK, N. Y.

\* 208. \*

Oceanic.



Neu Guinea Compagnie,

BERLIN

*64*

Germany.

U394

After 5 days, return to  
FLINT EDDY & CO.,  
30 Broad St.,  
NEW YORK, N. Y.

OCEANIC.



*H. J. Ammann Esq.  
c/o Jos. Ruvini Sohn & Co*

*H. C. Bruntah*

*Hamburg*

*Germany.*

Per LUCANIA.

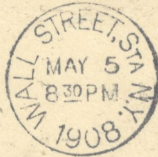


*From Richmond J. J. Kotop,  
Regiment # 6,  
Kaiserstrasse 98,  
Bavaria,  
Germany*



NF

After 5 days, return to  
GOLDMAN, SACHS & CO.,  
43 Exchange Place,  
NEW YORK, N. Y.



S/S. LUSITANIA

Banque Commerciale de Bale,  
Basle,  
Switzerland.