



No. 01167687

4/18/2008



Professional Stamp Experts

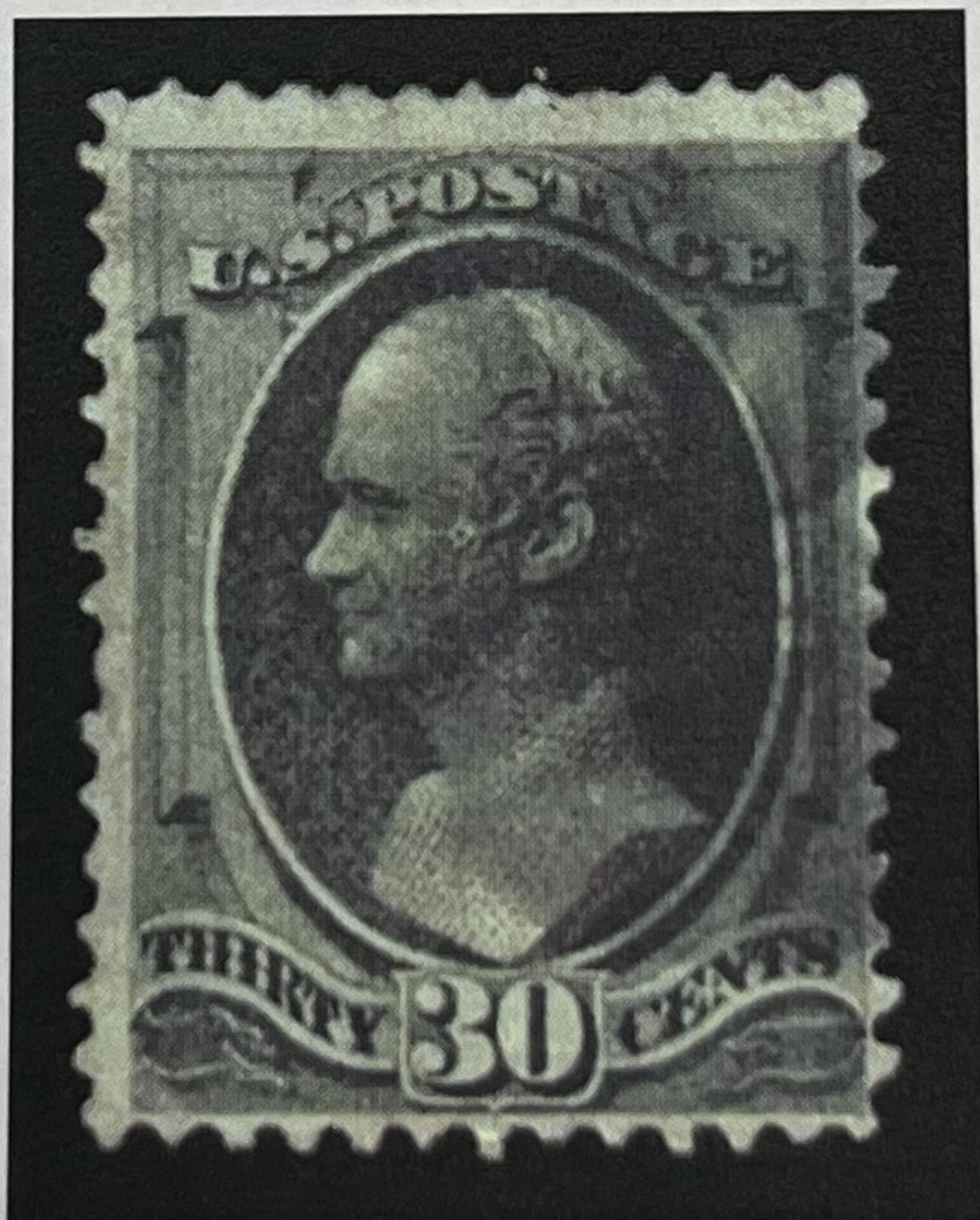
P.O. Box 6170, Newport Beach, CA 92658

Expert Committee

We have examined the enclosed item submitted to PSE, of which an image is shown below, and are of the opinion that:

Cat #	Issue	Denom.	Color
US#143	1870	30c	Black

“it is genuine used, H grill with a black cork cancel, a corner perf crease at the lower left and a torn perf at the lower left- third up from the bottom.”



For The Expert Committee