

UNITED STATES

Air Mail

1918



1923



1926/27



1928



UNITED STATES

Air Mail

1930



UNITED STATES

Air Mail

1933



1930



Perf. 11

1931



Perf.
10 1/2 : 11

1932



1934



1939



1935



1937



1937



1938



Air Mail Special Delivery

1934



dark blue

1936



red & blue

UNITED STATES

Air Post Stamps
C 25

Air Mail

June 25, 1941



UNITED STATES

Air Post Stamps
C 26

Air Mail

March 21, 1944



UNITED STATES

Air Post Stamps
C 27

Air Mail

August 15, 1941



UNITED STATES

Air Post Stamps
C 28

Air Mail

August 19, 1941

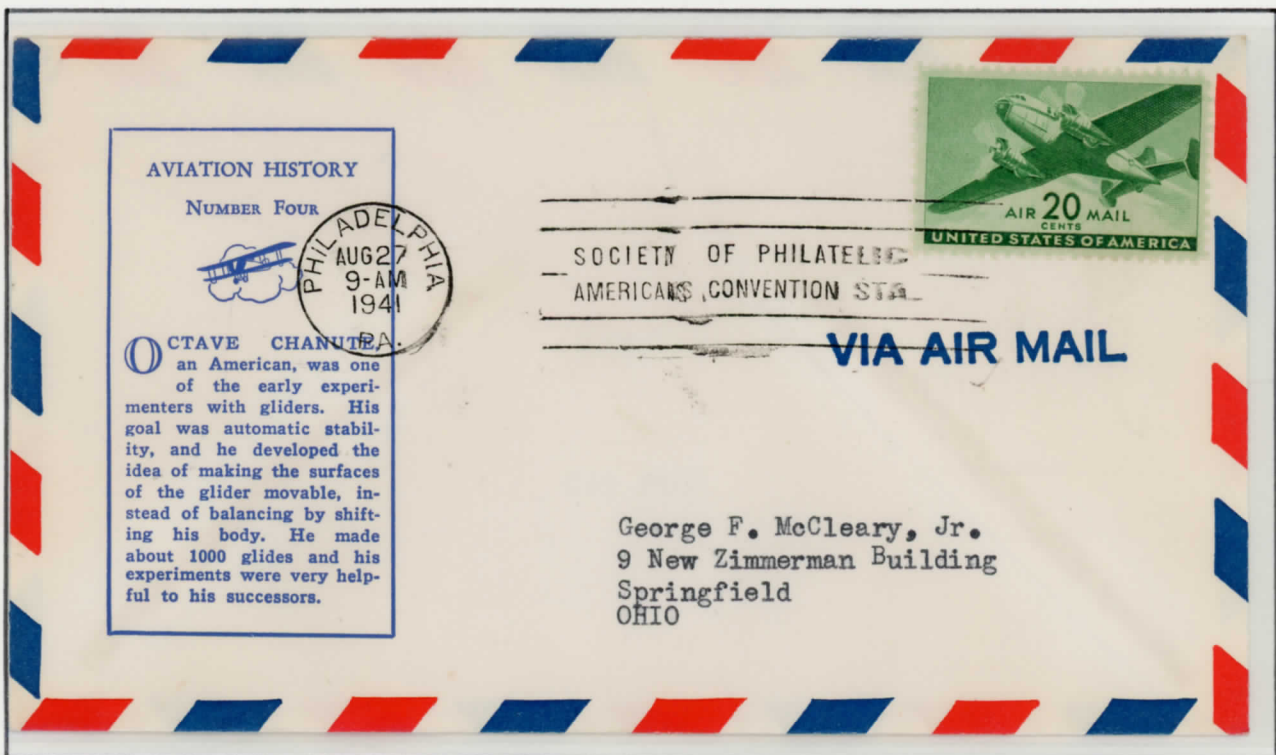


UNITED STATES

Air Post Stamps
C 29

Air Mail

August 27, 1941



UNITED STATES

Air Post Stamps
C 30

Air Mail

September 25, 1941

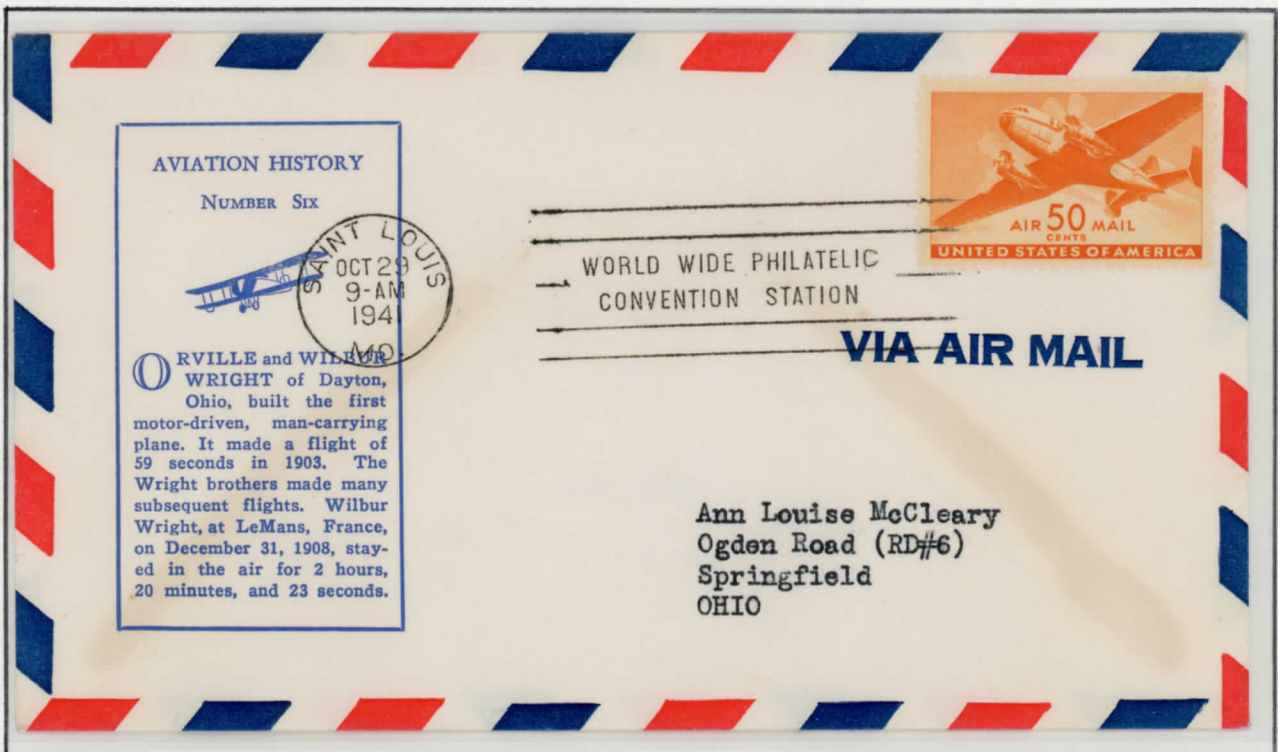


UNITED STATES

Air Post Stamps
C 31

Air Mail

October 29, 1941



UNITED STATES

Air Mail

1947



1946



1949



1947



1948



UNITED STATES

Air Mail

1949



1952



1953



1957



1954



1958



1960



carmine

1958



blue

1962



carmine

UNITED STATES

Air Mail

Coil Stamps

1948



1949



1958



1960



1962



UNITED STATES

Air Mail

1959/61



1959

1959

1963



1959

1959

1963



1963



UNITED STATES

Air Mail

1964



1967



1967



1969



1968



1971



1968



1971



UNITED STATES

Air Mail

1971



1968



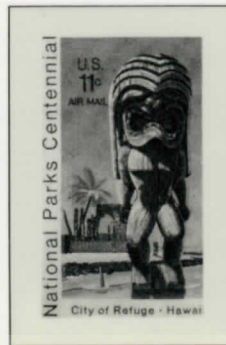
1971



1973



1972



1972



1973



1974



UNITED STATES

Air Mail

Coil Stamps



1971

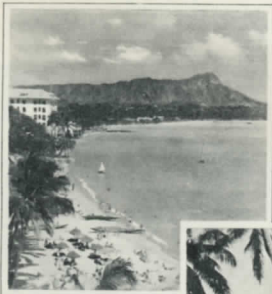


1973





FIRST DAY OF ISSUE



WAIKIKI BEACH
AND DIAMOND HEAD



P.A.A. PHOTOS



FIRST DAY OF ISSUE

80-cent
Air Mail Stamp
1952



REGISTERED
No. 80299

VIA AIR MAIL

Raymond V. Bahr,
c/o Wayne M. French,
204 Franklin Street,
New York, New York.



VIA AIR MAIL
FIRST DAY LINDBERGH
and ESLECK Special Cover
"Lightest and Fastest"

Miss S. Mazer,
Rm. 327 10 High St.,
Boston, Mass.





VIA REGISTERED MAIL

VIA AIR MAIL
FIRST DAY LINDBERGH
and ESLEECK Special Cover
"Lightest and Fastest"

Miss S. Mazer,
Rm. 327 10 High St.,
Boston, Mass.

19006



VIA AIR MAIL
FIRST DAY LINDBERGH
and ESLEECK Special Cover
"Lightest and Fastest"

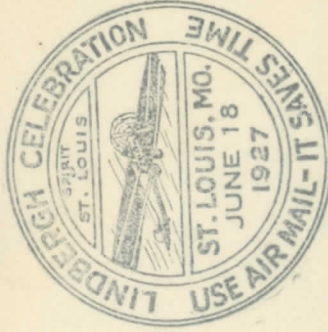
William Mitchell,
166 Westminster St.,
Bellows Falls, Vt.



VIA AIR MAIL
FIRST DAY LINDBERGH
and ESLEECK Special Cover
"Lightest and Fastest"

Frank H. Jones,
10 High St.,
Boston, Mass

19000



William S. Fowler,

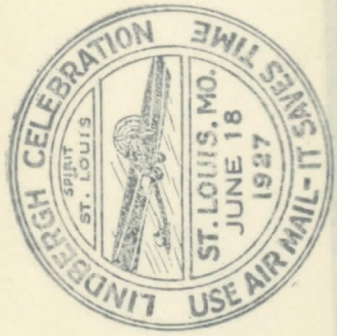
Hampden Glazed Paper & Card Co.

VIA AIR MAIL

FIRST DAY LINDBERGH

and **ESLEECK** Special Cover

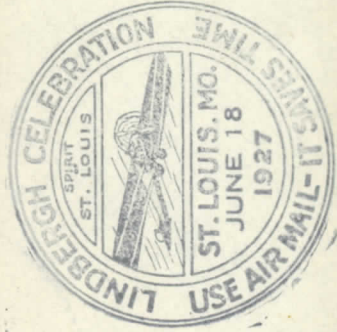
"Lightest and Fastest"



VIA AIR MAIL
 FIRST DAY LINDBERGH
 and ESLECK Special Cover
 "Lightest and Fastest"

Elmer R. Blenis,
 74 India St.,
 Boston, Mass.

VIA AIR MAIL
FIRST DAY LINDBERGH
and ESLEECK Special Cover
"Lightest and Fastest"



Frank H. Jones,
10 High St.,
Boston, Mass.



1 FM

VIA AIR MAIL
FIRST DAY LINDBERGH
and ESLEECK Special Cover
"Lightest and Fastest"

William Mitchell,
166 Westminster St.,
Bellows Falls, Vt.

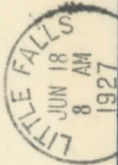


DEARBORN
JUN 13
7 AM
MICH 4827



VIA AIR MAIL
FIRST DAY LINDBERGH
and ESLEECK Special Cover
"Lightest and Fastest"

Frank H. Jones,
10 High St.,
Boston, Mass.



Frank H. Jones,
10 High St.,
Boston, Mass.

VIA AIR MAIL
FIRST DAY LINDBERGH
and ESLECK Special Cover
"Lightest and Fastest"

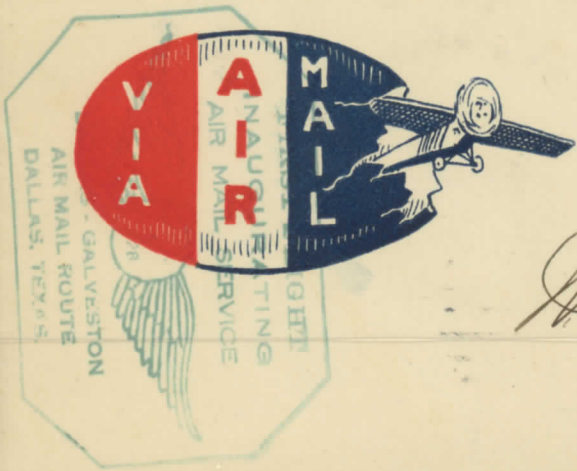
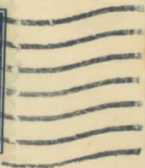




Frank H. Jones,
10 High St.,
Boston, Mass.

VIA AIR MAIL
FIRST DAY LINDBERGH
and ESLEECK Special Cover
"Lightest and Fastest"

DALLAS, TEXAS
FEB 6
7 AM
1928
YOUNG ST. STA.



Mr. G. C. Cuenca
1624 Ave. K,
Galveston, Texas.



VIA U. S. AIR MAIL

George E. ...
Postmaster,
Philadelphia, Pa.

PHILADELPHIA
MAY 1
8 P
1928



1928



J. Max Golding,
Care Postmaster,
Washington, D.C.

INTER. 28.3 7.50 +

FIRST FLIGHT
UNDER CONTRACT
CHICAGO - SAN FRANCISCO



TRANSCONTINENTAL
AIR MAIL ROUTE
SACRAMENTO, CALIF.



VIA AIR MAIL

Walter D. Perry
c/o Postmaster
Elko, Nevada

412



FIRST FLIGHT

LINCOLN, NEBR.

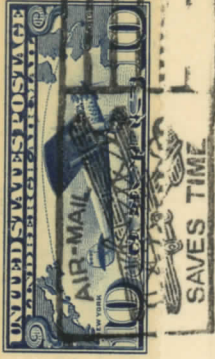
JULY 10, 1928

AIR MAIL CAM 12

CHICAGO - SAN FRANCISCO

VIA AIR MAIL

Mr. N. C. Baum,
14th Floor, N. W. Bell Tel. Co.,
Omaha, Nebr.

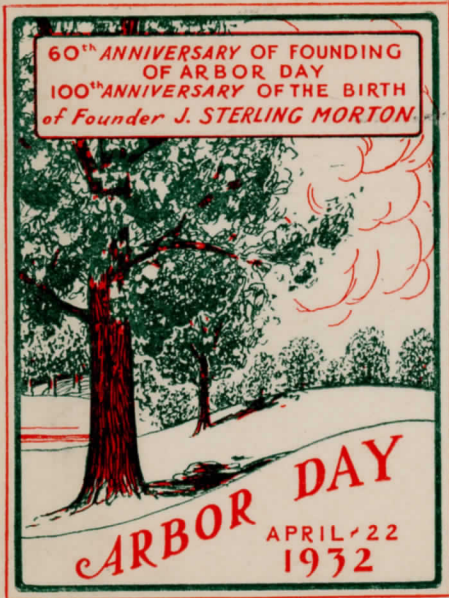


SAINT LOUIS, MO 1
FEB 20
3:30 P.M.
1928

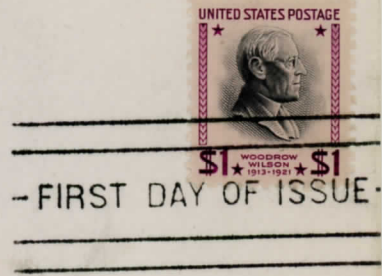
AGAIN FLIES THE AIR MAIL
CHICAGO
ST. LOUIS
C. A. M. 2
ST. LOUIS, MO.
LINDBERG
2-20-28

ANN'S STAMP Shoppe,
1325 No. Menard Ave.,
Chicago, Ill.

VIA AIR MAIL



*Dr. R. J. Scott
Port Henry
New York*



WOODROW WILSON
TWENTY EIGHTH PRESIDENT OF THE UNITED STATES
1913 - 1921

Rev. Francis A Gressle
1757 Mills Ave.
Norwood, Ohio.



1938
PRESIDENTIAL SERIES
WARREN G. HARDING
1865 ***** 1923
FIRST DAY COVER

*Fee claimed at
Mansfield, La. P.O.*



- FIRST DAY OF ISSUE -

VIA AIR MAIL

VIA AIR MAIL
SPECIAL DELIVERY
REGISTERED

SPECIAL DELIVERY
REGISTERED
722157

MRS. W. E. VANN
621 JEFFERSON AVENUE
MANSFIELD
LOUISIANA

1938
PRESIDENTIAL SERIES
CALVIN COOLIDGE
1872 *** 1926
FIRST DAY COVER



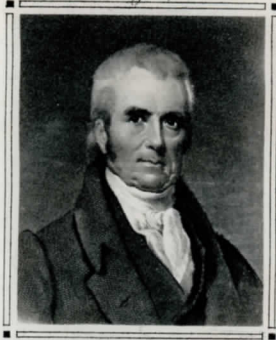
- FIRST DAY OF ISSUE -

VIA AIR MAIL

VIA AIR MAIL
SPECIAL DELIVERY
REGISTERED
4018

MRS. W. E. VANN
621 JEFFERSON AVENUE
MANSFIELD
LOUISIANA

First Day of Issue



JOHN MARSHALL
PATRIOT - STATESMAN
CHIEF JUSTICE - U.S. SUPREME COURT
1801-1835



40¢ 1755-1835

REGULAR POSTAGE

SERIES OF 1954 - 56



FIRST DAY
OF ISSUE



BIRTHPLACE
ADAMS, MASS.

Susan B. Anthony
1820-1906

REFORMER - LECTURER AND WRITER
PIONEER LEADER IN THE EXTENSION OF
WOMEN'S RIGHTS

50¢

REGULAR POSTAGE

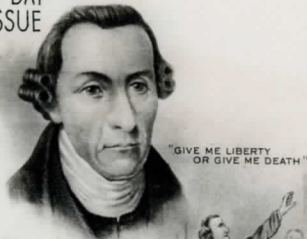
SERIES OF 1954-56



OFFICIAL FIRST DAY COVER
AUTHORIZED BY
SOCIETY OF PHILATELIC AMERICANS



FIRST DAY OF ISSUE



P. Henry

PATRICK HENRY
VIRGINIA PATRIOT AND LEADER
IN THE REVOLUTION
1736-1799



FIRST DAY OF ISSUE

25257

\$1.00
Regular Postage
SERIES OF 1954-56



OFFICIAL FIRST DAY COVER
AUTHORIZED BY
4-STATE FEDERATION OF STAMP CLUBS



FIRST DAY
of ISSUE

Alexander Hamilton
1757-1804
SOLDIER · STATESMAN · PATRIOT

\$5.00

REGULAR POSTAGE
SERIES OF 1954-56



FIRST DAY OF ISSUE



FIRST DAY OF ISSUE