

Re-entries, Flaws and Plate Varieties of the first New Zealand Stamp Issue 1855 - 1873

The first issue of New Zealand stamps, being line-engraved, is replete with re-entries and other varieties resulting from flaws and later damage to the plates, some of which were used for eighteen years.

This study excludes the particular damage that occurred to the Two Pence Plate II which resulted in many of the impressions being retouched by a skilled engraver.

For the first time, these varieties have been compared to the surviving intact sheets of all but the Two Pence Plate I which are held by the Museum of New Zealand Te Papa Tongarewa. These sheets have been digitally photographed in high resolution, copies of which are used to illustrate the varieties discussed, and also to provide comparison with earlier printings. Previous studies have used the 1906 reprints by Hausburg for such comparisons. A surviving complete sheet of the Two Pence Plate I 1906 reprint by Hausburg is used to illustrate varieties from this plate and also the varieties from plate II which are better seen than in the actual printings in orange ink.



One Penny Row 11 No. 3 double re-entry

Additional features of this study are the description and illustration of examples of incomplete erasure of impressions from the initial laying down of the Three Pence plate, and comparison of the re-entries and flaws of all values over different printings as plate wear affected the visible features of these varieties. Where possible, mint and used multiples and examples on cover are included.

The One Penny Plate

More re-entries are found on this plate, the first to be made by Perkins Bacon & Co. for the New Zealand Chalton issue, than on any of the other values.

This can be attributed to the irregular vertical and horizontal spacing of the 240 impressions on the plate, as illustrated on one of the largest surviving blocks of original plate proofs, one sheet of which was printed prior to the London prints of 1855.

Perkins Bacon & Co.
plate proofs
Rows 2-7 3-8
Nos. 1-7

One Penny Row 4 No. 11

Faulty impression a fraction of a millimeter to the right. Doubling affects the letters PO of POSTAGE, top left corner of O of ONE, and the left side of the P of PENNY.



Perf. 12 1/2 wmk. star



One Penny Row 5 Nos. 8 - 10



Perf. 12½ wmk. star Rows 4 - 6 Nos. 9 - 12 with re-entries 5/9 and 5/10



Row 5 No. 8 (lower stamp) on 1871 cover

One Penny Row 5 No. 8

A faulty impression 0.8 mm to the left. Traces of doubling of the right vertical frame line are not visible in the early printings and become more evident with plate wear, particularly the printings in the brown colors. Also noticeable are spots of color in the letters ND of ZEALAND, E of ONE, and NNY of PENNY.



1858 Richardson print



1862 Davies print



1864 Perf. 12½ wmk. star



Rows 4 - 5 Nos. 7 - 8



Row 5 Nos. 7 - 8



1871 perf. 10 x 12½



1871 perf. 12.5 wmk. star



1871 perf. 12.5 wmk. star

One Penny Row 5 No. 9

A faulty impression 0.6 mm to the left and 0.2 mm high. Faint doubling of the upper frame line, of lower portion of the left frame line in the gutter, of the right nostril, of the right hair line and of the ribbon. Traces of doubling of the letters of NEW ZEALAND and POSTAGE and of ONE PENNY.



1862 Davies print



Row 5 Nos. 9 - 10
Queen's Redoubt obliterator



1864-71 perf. 12½



1864-71 perf. 12½



1871 perf. 10



1871 perf. 10 x 12½



1871 perf. 12½
wink. star

One Penny Row 5 No. 10

A faulty impression 0.3 mm to the left. Traces of doubling of the left frame line in the gutter are most marked at the lower corner, particularly in the later printings. Right frame line is doubled above the lower corner ornament. Faint doubling of the eyes and right nostril. Spots of color in the letters of NEW ZEALAND, particularly the D, POSTAGE and ONE PENNY.



1863 perf. 13



1864-71 perf. 12½



1871 perf. 10 x 12½



1871 perf. 12½ wink. star



1871 perf. 12½ wink. star Row 5 Nos. 9 - 12

One Penny Row 11 No. 3



A double re-entry characterized by two vertical frame lines inside the left frame of the stamp: the first 0.8 mm to the right and extending the full length of the stamp; the second 0.25 mm to the right and extending from the top to the edge of the portrait circle. This second line is not visible on the 1871 and later printings. Additional features are doubling of parts of the frame line in the right gutter at top and bottom, lines of the face, necklace and bodice, and traces of doubling in the letters of NEW ZEALAND, POSTAGE and ONE PENNY.



1858 Richardson print



1862 Davies prints wmk. star

N2. # P. 12 1/2 X
 Price 1350
 imp. 19
 Our Price 67

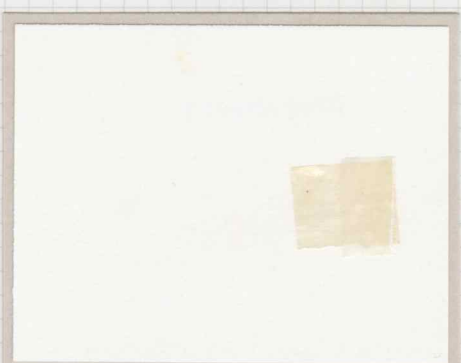


102

One Penny Row 11 No. 3



1864-71 perf. 12 1/2



Rows 11 - 12 Nos. 3 - 4

1864-71 perf. 12 1/2



1871 perf. 10

1871 perf. 10 x 12 1/2

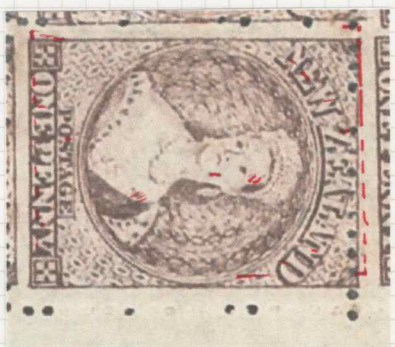


1871 perf. 12 1/2 wmk. star



1872 perf. 12 1/2 unwmkd.

One Penny Row 14 No. 12



A faulty impression 0.8 mm to the left and 0.3 mm high, with doubling of the upper frame line in the gutter and of the lower frame line. Traces of doubling of the left frame line in the gutter and of the right frame line below the D of ZEALAND. Doubling of parts of the letters of NEW ZEALAND, POSTAGE and ONE PENNY, the hair line at right, the right eye and cheek and the ribbon. Details are not lost with plate wear.



1858 Richardson print



1862 Davies print wmk. star



1864 wmk. NZ



One Penny Row 14 No. 12



1864-71 perf. 12½



1871 perf. 10 x 12½



1871 perf. 12½ wmk. star



One Penny Row 17 No. 10



A faulty impression 1.2 mm low. Duplication of the left pupil and right nostril; a short interrupted line runs below and parallel to the base of the neck at left; a line of color in the circle below the shoulder at right and others in the value tablet extending down to the lower gutter and reaching to frame line of the stamp below, including a spur under the P. Details are seen in all printings.



1862 Davies print wmk. star



1864 wmk. NZ



186



1871 perf. 10



1871 perf. 10 x 12½
Nos. 10 - 11



1871 perf. 12½ wmk. star



Nos. 9 - 12

One Penny Row 18 Nos. 5 & 6



A faulty impression (extrinsic re-entry) covering both positions with parts of the faulty left frame line 5.3 mm from the right corner of No. 5 and faulty right frame line 6.5 mm to the left of the right edge of No. 6. In No. 6 a curved line, corresponding to a portion of the heavily engraved base line of ZEALAND, cuts the W of NEW. Spots of color are found in the letters ONE PEN. Fine detail is best appreciated in the 1855 London print and is partially lost in the 1884 reprint.

1855 London print R. 18/6

1858 Richardson print



1862 Davies print



1864 wmk. NZ

1864 perf. 12½ wmk. star

One Penny Row 18 Nos. 5 & 6



1864-71 perf. 12½ wmk. star



Row 18 Nos. 5 - 8



R. 18/5 & 6 on 1866 Invercargill town letter



1871 perf. 10



1871 perf. 12½ wmk. star



1884 reprint R. 18/6

One Penny Row 19 No. 3



A faulty impression 0.15 mm high, most easily recognized by doubling of the upper frame line, of the lower frame line just within the letters ONE PENNY, and of the top lines of the letters W ZEAL of NEW ZEALAND. Doubling is also seen in facial features such as the upper lip, the left nostril, and the lines above each eye. As the plate wore, doubling disappears from the lower frame line and the right side of the upper frame line, the lines above W and A, and most of the facial features.



1855 Richardson print



1858 Richardson print



1862 Davies print



1864-71 perf. 12½



1871 perf. 10 x 12½



1871 perf. 12½ wmk. star R. 19/1 - 4



1871 perf. 12½ wmk. star

1872 perf. 12½ unwmkd.

One Penny Plate Flaws

Two plate flaws are identified on this plate; both appeared after the plate was put into use and both are in the form of vertical scratches.



1864-71 perf. 12½



Row 9 No. 4 : identified on printings from 1862 to 1873 as an almost vertical line extending the full length of the stamp between the E and W of NEW and the O of ONE. In the earlier printings the line is colored, and as the plate wore the line shows as missing color, as in the example illustrated from the 1864 to 1871 printings.



1871 perf. 10



1871 perf. 10¼ wmk. star

below the N
ow the lower



The Two Penny Plate I

Only three re-entries are recognized on this plate, even though spacing between impressions, particularly horizontal spacing, is quite irregular.

Two re-entries have been reported from positions Row 16 No. 12 where the lower corner ornament is said to be duplicated 2mm to the right of the impression, and Row 17 No. 12 with similar duplication of the upper corner ornament. The plate proof block illustrated has both of these positions with no traces of duplication; neither is duplication seen in an intact sheet of the 1906 Hausburg reprint.

Perkins Bacon & Co. plate proofs

Rows 15 - 18 Nos. 10 - 12

Plate I Row 8 No. 11



A faint impression 0.4 mm to the right and a trace low. Notable features include doubling of the left frame line, top and bottom of the right frame line, outline of the cheek at left and hair line; spots of color within the letters of NEW ZEALAND, POSTAGE and TWO PENCE. There is little loss of detail as the plate wore.



1856 Richardson print
on blue paper



1858 Richardson print on white paper
Row 8 Nos. 10 - 12

Two Pence Plate I Row 8 No. 11



1862 Davies prints wmk. star



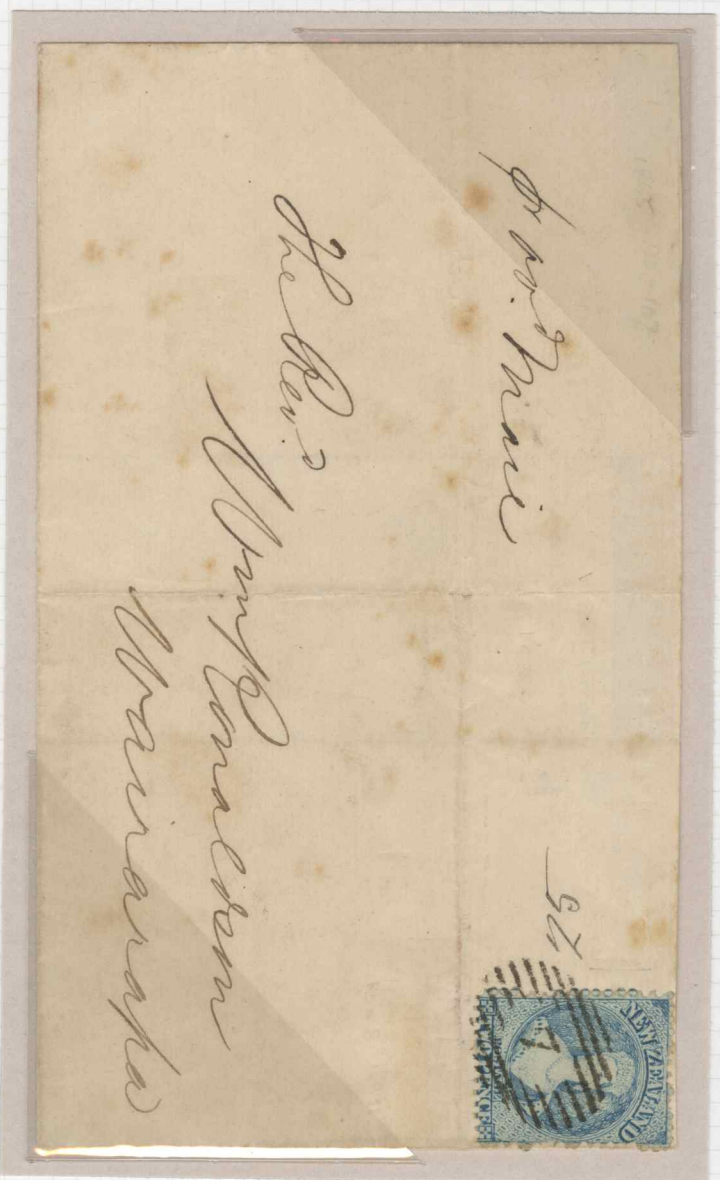
1863 perf. 13 wmk. star



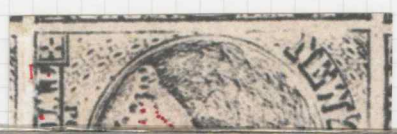
1864 wmk. NZ



1864 perf. 12 1/2 wmk. star Row 8 Nos. 8 - 11



Row 8 No. 11 perf. 12 1/2 wmk. NZ on 1865 cover



1862 Davies print



1863 perf. 13 wmk. star

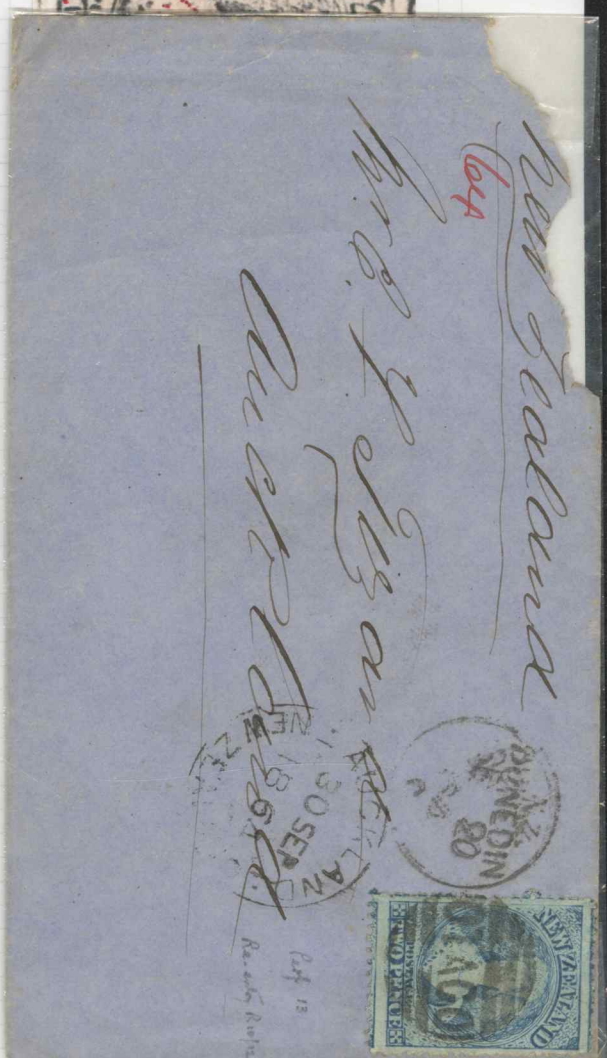


1864 perf. 12 1/2 wmk. star

1858 Richardson prints in blue, deep blue and pale blue shades



1906 reprint on cream wove paper Rows 9 & 10 Nos. 11 - 12



Don-
wer
and
with
A
the
s of
WO

Two Pence Plate I Row 11 No. 4



A faulty impression 0.3 mm to the right. Doubling of the left vertical frame line and right frame line within the gutter between impressions 4 and 5, and of the central chin dot. Spots of color within the letters are noticeable in all the letters of NEW ZEALAND, P of POSTAGE and W, P, E and E of TWO PENNCE. As the plate wore, the duplicated left frame line is only faintly visible

**1856 Richardson print on blue paper
Row 11 Nos. 3 - 5**



**1858 Richardson print on white paper, blue and pale blue shades
Row 11 Nos. 4 - 6**



**1864 Davies print perf. 12 1/2 wmk. star
Row 11 Nos. 4 - 7**

Two Pence Plate I Flaw Row 9 No. 9



A constant flaw, seen on all printings, characterized by a colored spot extending from within the top right corner of the Z of ZEALAND to just above the frame line above the Z. The flaw remains evident on worn printings.

**1855 London print
on 1856 registered
cover**



**1856 Richardson print
on blue paper**



**1858 Richardson print
on white paper**



**1862 Davies print
Row 9 Nos. 8 - 10**



**1862 Davies print
serrated 18**

1864 wmk. NZ

**1864 perf. 12 1/2 wmk. star
Row 9 Nos. 9 - 11**

Two Pence Plate I Flaw Row 14 No. 5



A constant flaw, noted from the London printings but more difficult to see in the later printings. Characteristics are two colored spots close together, the right spot higher than the left, on the Queen's neck within the arc of the neckline. Likely caused by foreign material creating pits in the plate at the time of manufacture.



1856 Richardson print
on blue paper



1866 proof on thick unwmkd. paper
Row 13 & 14, No. 5

Two Pence Plate I Flaw Row 7 No. 2

Inconstant flaws are noted, some more prominent than others. A slanted vertical line is seen on this late printing, likely caused by an abrasive scratch when the plate was cleaned between printings. The line extends from the top of the Queen's left ear to the top of the row 8 impression.



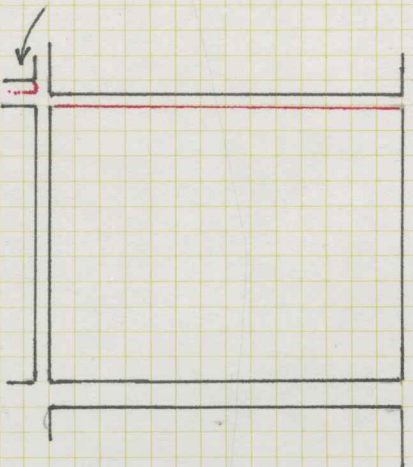
1865 envelope to Edinburgh
with 2d Row 7 Nos. 2 & 3
perf. 12 1/2 wmk. star

1856 (March) Printed on blue paper. No watermark and imperforate. Spectacular wide pre-print crease across the design.



1862/64 No watermark and imperforate. Both stamps have re-cut left frame lines. (unplated).

RE-CUT FRAME LINES.



1862/64 Wmk. "Star" Imperf. 1862/64 Wmk. "Star" Imperf. 1862/64 Wmk. "Star" Perf. I3.

Plate I. Row IO. No. 5. Re-cut left frame line (evidence of Row II. No. 4's re-entry, where impressions were very close, some had the left frame line re-cut before printing, while others were retouched to repair plate wear.)

AHURIRI,
MR 18,
NEW ZEALAND,
1859

Cover stamped.

DRIFIELD
8
JU 11
59

1858/61 No Wmk. Imperf. First and second stamps with re-cut left frames (unplated). Second is similar to the above stamps.

R. 19: 10-12



Two Pence Plate II Plate Flaws

No re-entries are seen on this plate, in use from late 1865 through 1873, probably because of the closer attention given to accurately spacing the impressions to allow for perforating the stamps. Six flaws are noted, four of which are noted on the printings in blue and orange, and all are seen on the Hausburg reprint sheet, reproductions of which are used to display their characteristics.



Row 4 No. 4: a large smudge on the left side of the crown and diagonal line on forehead; the smudge enlarged as the plate wore as seen on the block (Rows 3 & 4 Nos. 2 - 4) from an early printing and single from a later printing.



Row 5 No. 2: the queen's necklace appears to split into two after the fifth pearl from the left, seen on all printings.



Row 5 No. 5: a deep scratch on the forehead, seen on later printings from 1872-1873.



Row 15 No. 4: a spot of color below the left ear just above the jaw line, seen on all printings.



Row 15 No. 5: a patch of color below the P of POSTAGE such that the P resembles an R.



Row 19 No. 11: a bulbous deformity of the nose, smudge on right cheek, mark on left cheek, and dot above left eye. This flaw is not present in early printings as seen in the block (Rows 19 & 20 Nos. 9 - 12) but noted on later printings in blue and all printings in orange.



Three Pence Row 2 No. 11



Three re-entries that can be identified on printed stamps have been found on the Three Pence plate, suggesting that more care in the spacing of impressions was taken because of the requirement for perforating the stamps. Because the lilac and mauve inks resulted in a smudged appearance to the stamps, the re-entries on this plate are much better defined on later reprints in black ink.

Row 2 No. 11 shows evidence of a faulty impression 1.5 mm to the left and a trace low, with faint doubling of both corner ornaments, of the lower frame at right and some of the letters of POSTAGE. Spots of color can be seen in the letters TR and ENCE and in the gutter at left lower corner.

1865 perf. 12½ Row 1 & 2 Nos. 11 - 12



1863 imperf.
brown-lilac shade



1865 perf. 12½
pale lilac, lilac & mauve shades

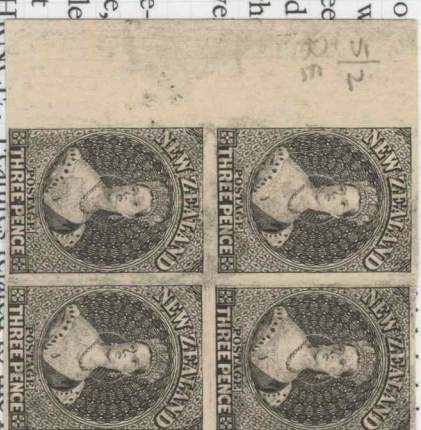


Three Pence Row 4 & 5 No. 2



Row 4 No. 2 : a faulty impression 10.5 mm low and 0.25 mm to the left, with doubling of the lower half of the duplicated upper frame line within the stamp at the level of the Queen NEW ZEALAND can be traced the circle at the right shoulder which faintly visible (this latter is not visible).

Row 5 No. 2: this is a double re-entry of the stamp above, this unit placed 0.25 mm to the left and lower corner ornament at POSTAGE and of the letters THIN... re-entry include traces of the lower corner ornament 2 mm below the D of ZEALAND and touching the right frame line, the letters STA of POSTAGE appear on the Queen's forehead, and traces of the left frame line appear in the upper portion of the gutter at left.



Row 4 No. 2



1865 perf. 12½
lilac & mauve shades



1865 provisional imperforate
mauve & deep mauve shades



Row 5 No. 2



1865 perf. 12½
pale lilac, lilac and mauve shades



Three Pence Plate Flaws

Four constant flaws are identified on the 3d plate

Row 11 No. 7

A large patch of color below the bottom right corner caused by a rectangular pit in the metal prior to the rolling in of the impression.



1865 perf. 12½

Row 12 No. 8

A patch of color joining the tops of the T and H of THREE



1865 perf. 12½
Row 12 Nos. 7 - 9



1906 reprint on cream-toned wove paper
Rows 11 & 12 Nos. 8 - 12

Three Pence Plate Flaws

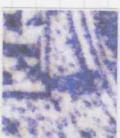
Row 14 No. 3

A spot of color on the right side of the bodice; it has the appearance of an extra ermine dot above the sixth dot from the left.



Row 18 No. 1

A claw shaped patch of color above the E of POSTAGE, most likely caused by some foreign matter pressed into the plate by the roller die.



1865 perf. 12½
Row 18 Nos. 1 - 3

Rows 18 & 19 Nos. 1 - 3

Three Pence Plate Varieties

The following varieties show features unique to this plate. When the plate was first worked on, the first 34 impressions were spaced too closely to allow for perforating the stamps. They were therefore erased, and the plate was then inverted for the final laying down of the impressions. As a result of incomplete erasure, visible remnants include vertical guidelines (Row 1, Nos. 1 and 12), markings from the prior impression such as chin shading and engine-turned background (Row 1 No. 2). Also seen in several impressions from the top three rows of the plate are horizontal guidelines which print on impressions that were placed slightly lower than others with the lines appearing across the value tablet.



Row 1 Nos. 1 & 2
1865 perf. 12½



Row 1 No. 12
1863 imperf.
vertical guideline top right corner



Row 1 No. 2 with remnants of prior inverted impression seen in the value tablet



1865 perf. 12½
horizontal guideline across value tablet



1872 envelope with 3d perf. 12½ from Wellington to Tasmania
horizontal guideline across base of all letters of THREE PENCE

Six Pence Row 16 No. 3

A faulty impression 2.4 mm low. The upper frame line and some lines of the letters of NEW ZEALAND are duplicated and the left shoulder line is doubled. The deepest lines of engraving of the ribbon are doubled below the circle on the right as well as the circle and outer line of the engine-turning at this place. Spot of color are seen in the letters of POSTAGE, the value tablet and in the gutter extending into the stamp below. There is no loss of detail in later printings.



1861 Richardson print
chestnut shade



1862 Davies prints

black-brown, deep red-brown & red-brown shades

1862 unwmkd. pelure paper

Row 16 Nos. 2-3



1864 perf. 12½ wmk. NZ



1864-71 perf. 12½ wmk. star



Six Pence Row 16 No. 3

1864-71 perf. 12½ wmk. star
Rows 16 & 17 Nos. 1 - 5



1871 perf. 12½ wmk. star
pale blue & blue shades

Six Pence Row 17 No. 3

This is a double re-entry with the faulty impression of Row 16 No. 3 seen faintly at the top of the stamp extending down 1.25 mm, especially in the letters ZEAL. The re-entry proper is 0.1 mm to the right and 0.1 mm low, with doubling of the right margin of N of NEW and parts of D of ZEALAND, the Queen's nose and of the portrait circle at lower right. These features are still clear in the 1871 printings in blue.



1859 Richardson prints in bistre-brown and pale brown shades



1862 Davies prints

1863 perf. 13 wmk. star



1864-71 perf. 12½ wmk. star

Six Pence Row 17 No. 3



Row 17 No. 3 on 1870 envelope to Edinburgh



1871 perf. 12½ wmk. star



Row 17 & 18 Nos. 2 - 3

Six Pence Row 17 No. 10



A faulty impression 2.25 mm low and 0.2 mm to the right, with duplication of both lateral and upper frame lines, some lines of NEW ZEALAND. There is doubling of the right shoulder line and part of the sash and circle to the right of POSTAGE, similar to the doubling seen in Row 16 No. 3. Spots of color are present in the center of the Queen's forehead, the left cheek, and in the letters POSTAGE and SIX PENCE, as well as in the lower gutter. There is no appreciable loss of detail in the later printings.



1859-61 Richardson prints

brown shades on soft and hard paper; chestnut shade on hard paper



1862 Davies prints

brown, red-brown and deep red-brown shades



1863 perf. 13 wmk. star



1864 perf. 12½ wmk. NZ



Six Pence Row 17 No. 10



1864-71 perf. 12½ wmk. star



1871 wmk. star
perf. 10 x 12½ x 12½ x 12½

1871 perf. 12½
deep blue, blue and pale blue shades

Row 17 No. 10 in deep blue shade on 1873 envelope to Liverpool

Six Pence Row 18 No. 10



This is an extrinsic re-entry with the faulty impression of Row 17 No. 10 appearing on the upper portion of the stamp. There are traces of a frame line running across the stamp 1 mm below the upper frame line and just dipping the tops of the letters ZEAL. Spots of color are seen between the tops of the letters ZEAL and the upper frame line and in the gutter above. Very little remains on the 1871 printings in blue, other than a spot of color at the top of the E of ZEAL.

Row 18 Nos. 9-10 brown shade
1859-61 Richardson dprints

chestnut

1862 Davies prints
black-brown, red-brown & deep red-brown shades



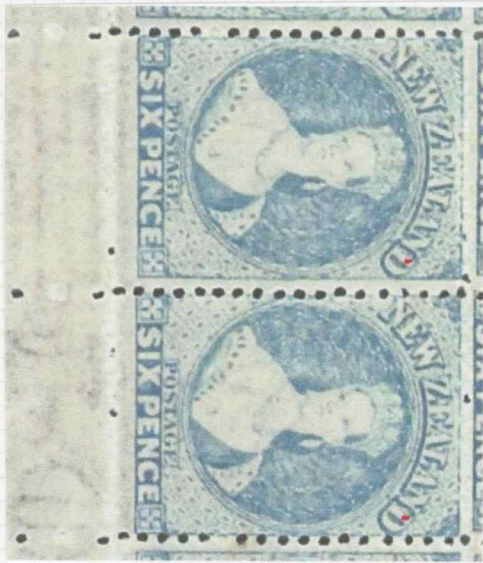
1864-71 perf. 12½ wmk. star



1871 perf. 12½

Row 18 & 19 Nos. 9 - 10

Six Pence Plate Flaws



One constant flaw is found on the six pence plate. This is a spot of color at the top of the vertical stroke of the D of ZEALAND, probably caused by a piece of hardened metal becoming lodged on the transfer roller during the rolling in of the plate. Impressions affected are position No. 4 of Rows 17 through 20, all rows of position 5 and rows 1 through 3 of position 6. The flaw is easily seen on the 1871 printings.

1859 Richardson printings

Row 6 Nos. 4 - 5

overlap top margin

1862 Davies printings

Row 7 Nos. 4 - 6



1864-71 perf. 12½

Row 6 Nos. 5 - 7



1871 perf. 12½

#14 "D" Flaw
Scissor cut



One Shilling Row 1 No. 5



A constant flaw, present on every stamp, and therefore on the original die, is a small spot of weakness in the design, located outside the central circle at the 8 o'clock position. Only one re-entry is found, Row 1 No. 5: a faulty impression 0.25 mm high and 0.1 mm to the right; doubling of the top line of the lower corner ornament and the right side of the line above POSTAGE as well as its letter, the base of the D of ZEALAND, pupil of the right eye, and the ermine dots of the circle between the shoulder and frame line at left.



1862 Davies print
green & yellow-green shades

1863 perf. 13 wmk. star



1864 wmk. NZ
green & yellow-green shades



1864-71 perf. 12½ wmk. star

Row 1 & 2 Nos. 5-6

Row 1 & 2 Nos. 3-5