



TO FROM  
 Pan American Airways, Inc.,  
 San Francisco, Cal.  
 HONOLULU, H. I., U. S. A.

TO  
 From Mr. W. Irving Glover,  
 Wardman Park Hotel,  
 Washington, D. C.



Joseph Enginger Jr.,  
 1829 S.W. 18<sup>th</sup> Ave,  
 Portland,  
 Oregon.



TO  
 Pan American Airways, Inc.  
 San Francisco, Cal.

TO  
 Wm. M. Boyst.  
 705 E. Kingston Ave.  
 Charlotte, N. C.



TO FROM  
 Pan American Airways, Inc.  
 Honolulu, Hawaii

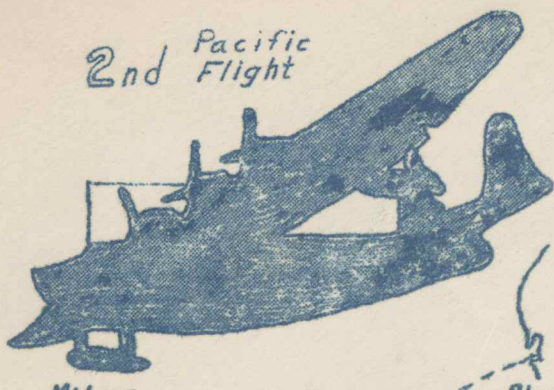
TO  
 C. R. Fehlman,  
 7657 Saginaw Ave.,  
 So. Stone Sta. Chicago, Ill.





PAN AMERICAN

2nd Pacific Flight



Midway 1398 Honolulu 985 Alameda 2410

Alameda Chamber of Commerce.

ALAMEDA  
3 PM  
JUN 12  
CALIF. 1935



CLIPPER ORIENT

Mrs. Albert Lee  
91 Beach St.  
Arlington  
N.J.

PAN AMERICAN AIRWAYS, INC.

Pacific Division

San Francisco, California

HONOLULU  
AUG 22  
17 PM  
HAWAII  
1935



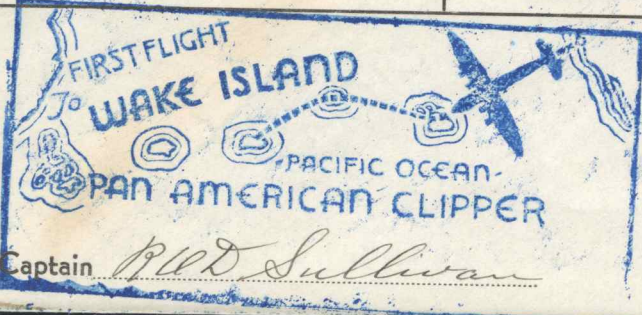
HONOLULU  
AUG 13  
4 AM  
HAWAII  
1935



From  
Airport Manager  
Pan American Airways, Inc.  
Honolulu, T. H.

To FROM  
Airport Manager  
Pan American Airways, Inc.  
Wake Island,  
Pacific Ocean

To  
Mr. J. T. Trippe, President  
Pan American Airways, Inc.  
135 E. 42nd Street  
New York City, New York



Arrive Midway Westbound 0130 August 19, 1935 2 P.P.  
Arrive Wake 0229 August 17, 1935 (Bairdell)  
Depart Wake Eastbound 1914 August 20, 1935 (Bairdell)  
Depart Midway Eastbound 1720 August 22, 1935 2 P.P.

SAN FRANCISCO CALIF.  
OCT 24 12 M  
1935

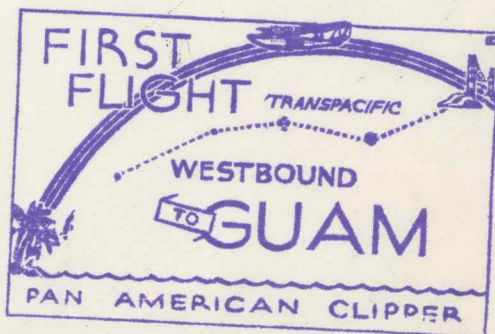


GUAM  
OCT 16  
5 AM  
1935  
GUAM



John W. Schreiber,  
435 Westminster Ave.,  
Elizabeth, N. J.  
Via San Francisco & Guam.

SAN FRANCISCO CALIF.  
OCT 5  
2-PM  
1935



SAN FRANCISCO CALIF.  
OCT 24 12 M  
1935



GUAM  
OCT 16  
5 AM  
1935  
GUAM



SAN FRANCISCO CALIF.  
OCT 5  
2-PM  
1935



To  
Pan American Airways Inc.,  
San Francisco, Calif.

VIA AIR MAIL

From  
Justo Rios,  
Winston-Salem, N. C.





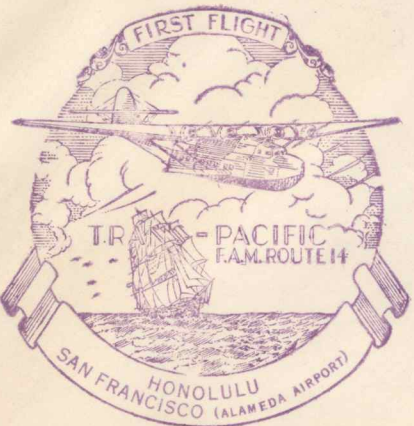
First Trans-Pacific Flight  
San Francisco to Hawaii



VIA AIR MAIL

Mr. Frank Schwabacher,  
1508 Russ Building,  
San Francisco, California.

BY FIRST CONTRACT TRANS-PACIFIC FLIGHT  
HONOLULU, HAWII TO SAN FRANCISCO, CAL.



VIA AIR MAIL

John E. Kope  
2097 Lincoln Ave.,  
Lakewood, Ohio.

SAN FRANCISCO TO HAWAII



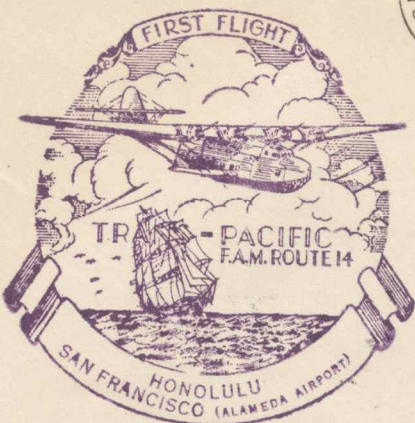
*Trans Pacific Air Mail Service*

CHINA: Canton, Manila  
GUAM  
HONOLULU (HAWAII)  
MIDWAY I.  
SAN FRANCISCO  
UNITED STATES

INAUGURAL FLIGHT NOVEMBER 22, 1935

Postmaster  
Honolulu  
Hawaii

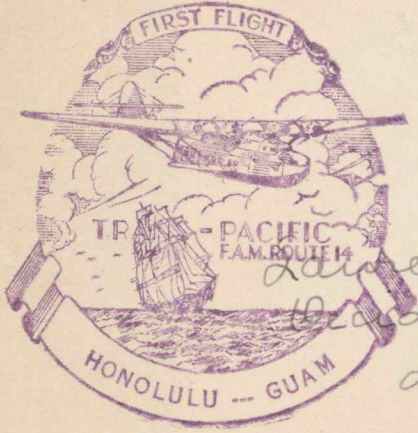
First Transpacific Flight  
Honolulu to San Francisco



Mr. Ben E. Sincere,  
231 S. LaSalle St.,  
Chicago, Ill.



By first contract  
transpacific flight  
Honolulu to  
Guam.

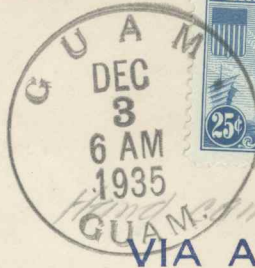
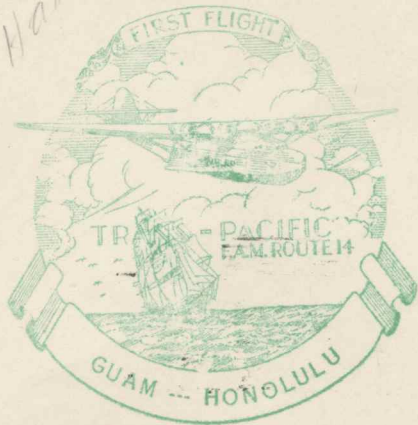


Lawrence Reed,  
Occidental College,  
Los Angeles,  
California.  
Box 204



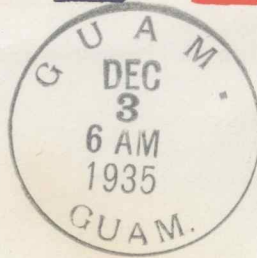
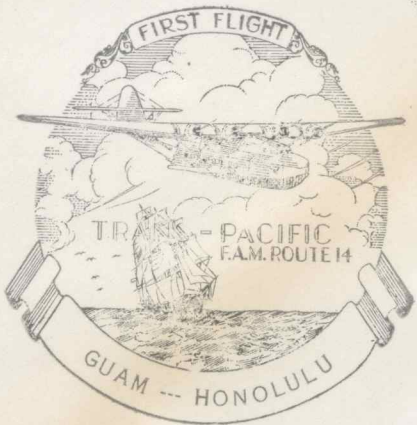
\$ 1.00

By first contract  
Trans Pacific  
Flight  
Guam to Hawaii



VIA AIR MAIL

Henry M. Folmer  
634 A St. SE.  
Washington DC.  
U.S.A.



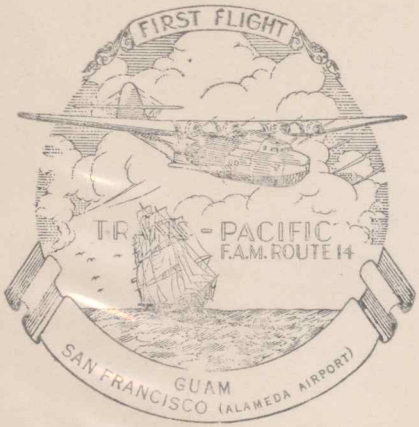
VIA AIR MAIL

Mr. J.T. Trippe, President  
Pan American Airways System,  
Honolulu, I.H.



GUAM TO THE UNITED STATES  
BY FIRST CONTRACT TRANS-PACIFIC FLIGHT

GUAM.  
DEC  
3  
6 AM  
1935  
GUAM.



Mrs. Emily M. Gremes,  
213 E. Union Street,  
Manchester, Iowa.





By First Contract Trans-Pacific Flight

PHILIPPINE ISLANDS  
TO SAN FRANCISCO



Fred E. Laue  
117 Santa Monica Boulevard  
Santa Monica, California  
U. S. A.

MANILA  
TRADE CENTER  
PACIFIC



MR J W MORRIS

C/O MR GUY A HARRELL

DOLLAR STEAMSHIP LINES,

SAN FRANCISCO, CALIF., U.S.A.



Flight San Francisco,  
Filipin Island.

Mr. Yasoo Idzumi,

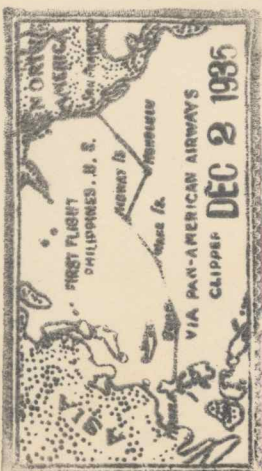
420 Maynard Ave,

Seattle, Wash.

U. S. A.



Manila to San Francisco



Mrs. F.V.C. Bryant

P.O. Box 162

Gardena

California

U.S.A.





"HAWAII TO MACAO"  
First Flight



HONOLULU.  
APR  
23  
5 AM  
1937  
HAWAII.



By Air Mail---TRANS-PACIFIC ROUTE

B. Rupp,  
P.O. Box 894,  
Babylon, L.I. N.Y.  
U. S. A.



★ ★ TRANS-PACIFIC ★ ★ UNITED STATES ★ ★ AIR MAIL ★ ★

Guam  
Philippine Islands  
San Francisco  
Hawaiian Islands

TRANS-PACIFIC AIR MAIL SERVICE  
SAN FRANCISCO HAWAIIAN ISLANDS GUAM PHILIPPINE ISLANDS  
FIRST DAY COVER

de Macao to Hawaii

Par Avion  
By Air Mail  
FORM 2978

★ ★ TRANS-PACIFIC ★ ★ UNITED STATES ★ ★ AIR MAIL ★ ★

R14-11A  
Honolulu to Macao

HONOLULU.  
APR  
23  
5 AM  
1937  
HAWAII.

VIA AIR MAIL  
Via Thans Pacific Route

Mr. Charles L. Horn  
Foshey Towers  
Minneapolis, Minn, U S A

Par Avion  
By Air Mail  
FORM 2978

MACAO TO HONOLULU  
FIRST FLIGHT

PAR AVION  
POR AVIÃO

Par avion  
de Macao a Honolulu

PRIMEIRO VÔO  
CORREIO  
TRANS-PACIFIC

MACAO - U.S.A.

ROBERT B. LYON  
LOUDON COUNTY  
PURCELVILLE, VA.



GUAM  
MAY  
1  
5 AM  
1937  
GUAM.



VIA AIR MAIL  
VIA CHINA CLIPPER  
FIRST FULL ROUTE FLIGHT  
TRANS-PACIFIC AIR MAIL  
GUAM--HONOLULU

Dr. A. H. Herr  
610 Hanna Bldg.  
Cleveland, Ohio, U. S. A.

Not  
Listed



MANILA  
APR  
29  
1937  
1 AM  
PHILIPPINE ISLANDS

VIA AIR MAIL

Mr. Yu Siu-Chong  
C/O Postmaster  
Hong Kong, China

FIRST FLIGHT VIA P.A.A.  
BUREAU OF POSTS  
MANILA - MACAO - HONGKONG  
1937

Please forward to.  
Mr. Yu Siu-Chong  
620 Reina Regente,  
Binondo, Manila  
Philippine Islands

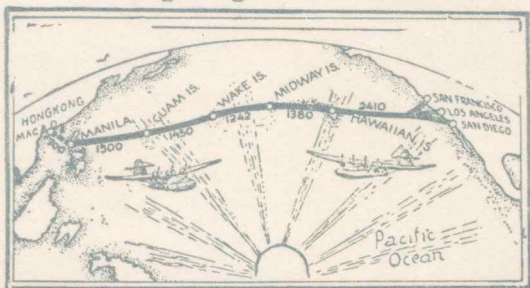
FIRST FLIGHT VIA P.A.A.  
RECEIVED MANILA  
1937  
FROM - MACAO - HONGKONG



VIA AIR MAIL

Hong Kong to Manila P. I.

ROBERT CORBY,  
BOX 83  
DOVER, N. J.



FIRST FLIGHT  
HONG KONG-MANILA, P. I.



VIA AIR MAIL

O. B. Collins,  
911 Waybridge Road,  
Toledo, Ohio.

FIRST FLIGHT VIA P.A.A.  
RECEIVED MANILA  
1937  
FROM - MACAO - HONGKONG



AFTER 5 DAYS RETURN TO  
MULLER & PHIPPS (MANILA) LTD.  
P. O. BOX 1478 MANILA, P. I.

VIA BOEING CLIPPER

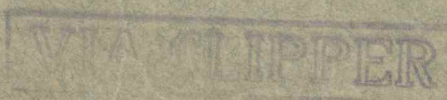


Mr. L. E. Phipps  
1 Park Avenue  
New York, N.Y.  
U.S.A.

W. H. SCHOENING,  
P. O. Box 626,  
Manila, Philippines.



MRS. W. H. SCHOENING,  
465 Throckmorton Avenue,  
Mill Valley, Main County,  
San Francisco, California,  
U. S. A.

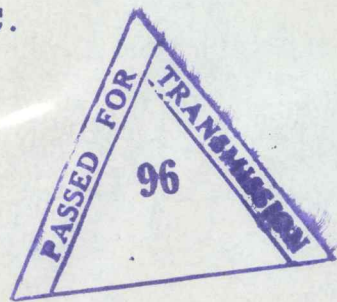


PAN AMERICAN AIRWAYS SYSTEM  
SINGAPORE  
STRAITS SETTLEMENTS



VIA AIR MAIL

PAN AMERICAN AIRWAYS, INC.  
GUAM, M. I.

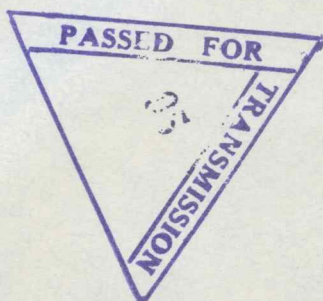


FIRST FLIGHT COVER  
SINGAPORE - GUAM

PAN AMERICAN AIRWAYS SYSTEM  
SINGAPORE  
STRAITS SETTLEMENTS



DON'T WRITE  
ABOUT SHIPS



VIA AIR MAIL

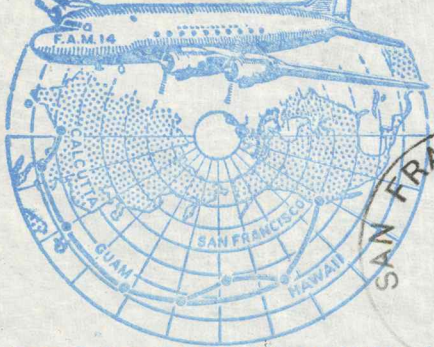
PAN AMERICAN AIRWAYS, INC.  
MANILA, P. I.



FIRST FLIGHT COVER  
SINGAPORE - MANILA



U. S. AIR MAIL  
FIRST FLIGHT



SAN FRANCISCO-HONOLULU-GUAM  
To CALCUTTA, INDIA



23136



VIA AIR MAIL



Carlo Benicelli  
218 East 11 st  
New York 3, N.Y.

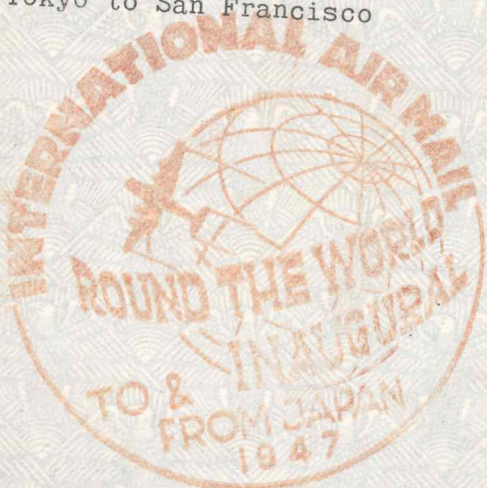
FIRST CLIPPER AIRMAIL FLIGHT  
PAN AMERICAN WORLD AIRWAYS SYSTEM  
FROM CALCUTTA, INDIA.

BY AIR MAIL  
PAR AVION



PAN AMERICAN WORLD AIRWAYS  
SAN FRANCISCO  
FIRST DIRECT AIR  
UNITED STATES OF AMERICA

Pan American World Airways  
First Clipper Air Mail Flight  
Tokyo to San Francisco



VIA AIR MAIL

c/o Pan American Airways, Inc.  
Municipal Airport  
San Francisco 19, California



Honolulu to Suva.

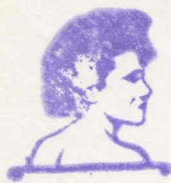


VIA AIR MAIL  
CORREO AEREO

Geo. P. Fish  
641 A St., N. E.  
Washington, D. C.  
U. S. A.

PAR AVION

SUVA FIJI TO HONOLULU



FIRST TRANSPACIFIC AIR MAIL  
Suva, Fiji to Honolulu

THE COVER EXCHANGE  
Box 733. - SCRANTON, PENNA.

TRANS-OCEANIC  
FIRST FLIGHT

UNITED STATES of AMERICA  
AIR MAIL SERVICE  
NEW F. A. M. ROUTE

U.S.A.  
TRANS-OCEANIC  
FIRST FLIGHT

NOUMEA - SUVA

PREMIER COURRIER AERIEN  
ENTRE  
NOUVELLE CALÉDONIE  
ET  
FIDJI



Richard L. Glasser  
3735 N. Meridian St.  
Indianapolis, Ind., U.S.A.

FIRST  
PAN AM  
INTERCONTINENTAL  
JET CLIPPER



AIR MAIL

San Francisco to Tokyo



VIA AIR MAIL

"TOWARDS CIVIL JET AGE"

EMIL KIMAK  
88 MERCER ST.  
WALLINGTON  
NEW JERSEY  
U. S. A.