

"MONTEVIDEO" THICK FIGURES ISSUE



Black Brown Lilac



Light Brown Lilac



Brown Lilac



Brown Lilac



Dark Brown Lilac



Brown Violet  
Tacuarembó Oval



Brown Lilac  
Tacuarembó Oval



Brown Rose  
"Sucursal" of  
Montevideo

Fancy Cancel of Salto



Purple-Violet



Pale Dark Brown



Reddish Brown Violet

"MONTEVIDEO" THICK FIGURES ISSUE

— Montevideo Oval Datestamp —



Pale Dark Brown  
Manuscript control  
mark at top left  
(upper left corner/  
sheet margin)



Dark Chestnut



Brown Lilac



Brown Lilac



Brown Purple



Grey Slate



Dark Chocolate



Rose Brown



Pale Brown Purple



Brown-Chestnut



Brown Rose



Dark Chestnut

"MONTEVIDEO" THICK FIGURES ISSUE

*Paysandú Oval*



*Pale Brown Black*



*Dark Purple Brown*



*Slate Grey*



*Light Grey Slate*



*Dark Brown*



*Brown Grey  
"Sucursal"  
Montevideo*



*Brown  
Mercedes Oval*



*Rose  
Salto c.d.s.*



*Black Brown  
Mercedes Oval*



*Grey Brown  
Salto c.d.s.*



*Dark Brown  
Durazno Oval*



*Rose  
Arredondo Oval*



*Dark Chestnut  
Paysandú Oval*

"MONTEVIDEO" THICK FIGURES ISSUE

Montevideo Datestamp



Brown Lilac



Brown Rose



Grey Slate



Brown Rose  
Faysandi Oval  
Subtype 6H  
(Plate flaw in  
upper right = panned)



Pale Brown Violet  
San José Oval



Brown Lilac  
(Dark)



Brown Rose  
Fray Bentos Oval



Dark Chestnut  
Dolores Oval



Brown Lilac  
Montevideo  
Datestamp

"MONTEVIDEO" THICK FIGURES ISSUE



17.9.61 Montevideo to Minas, "Secursal" Oval.

Rose-Brown  
Type 6



30.9.63 Montevideo to Salto

Type 11, Brown-Violet

"MONTEVIDEO" THICK FIGURES ISSUE



Mercedes to Montevideo

Brown-Chocolate



29.1.63 Montevideo to Rocha  
"Sucursal" Oval

Type 9, Brown-Lilac

"MONTEVIDEO" THICK FIGURES ISSUE

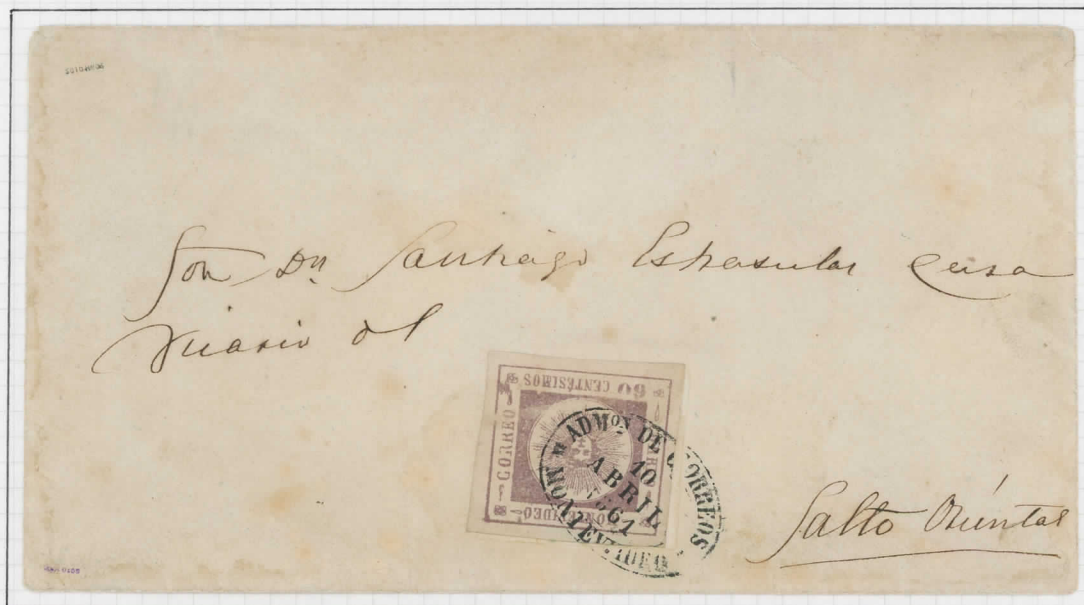


15.8.61 Salto to Montevideo Type 1h, Brown-Rose  
"Administración de Correos / Salto" (RR tying the franking)  
Ex Lee



15.4.61 Montevideo to Paysandú  
Ex Sciarra

"MONTEVIDEO" THICK FIGURES ISSUE



10.4.1961 Montevideo to Salto

Blue Brown  
(Plate Flaw above bottom right ornament)

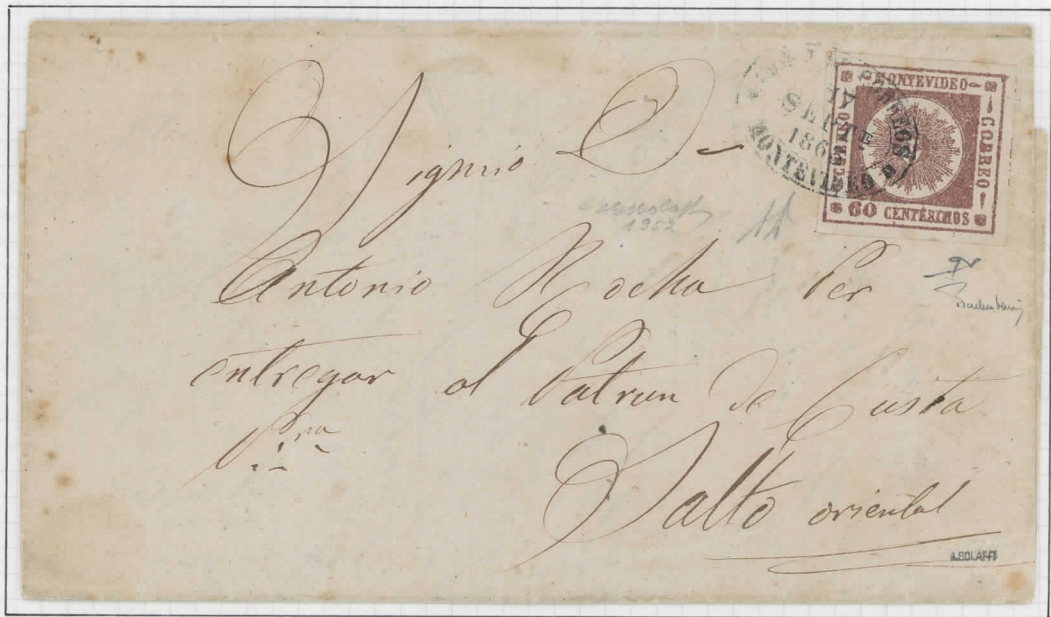


Montevideo to Tacuarembó  
"Secursal" Oval

Pale Brown Lilac

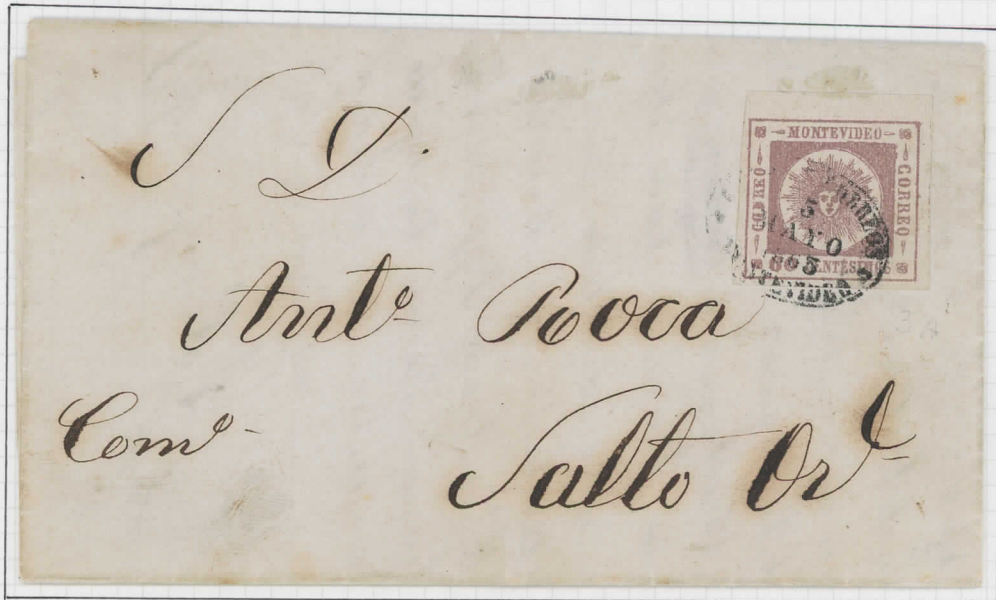


"MONTEVIDEO" THICK FIGURES ISSUE



17.9.63 Montevideo to Salto  
Ex Sciarra

Type 3, Deep Brown



5.5.1863 Montevideo to Salto

Type 3A, Brown Lilac

"MONTEVIDEO" THICK FIGURES ISSUE



5.3.1862 Montevideo to Salto  
Ex Lee

Type 8, Brown Rose



Montevideo to Maldonado  
"Sacursal" Oval

Type 7, Dark Brown

"MONTEVIDEO" THICK FIGURES ISSUE



24.7.1862 Salto to Montevideo Type 4, Dark Brown  
"Renta de Correos / Salto" cds.



Montevideo to Paysandú Type 2, Brown-Rose

"MONTEVIDEO" THICK FIGURES ISSUE



19.7.61 Montevideo to Salto

Reddish Brown



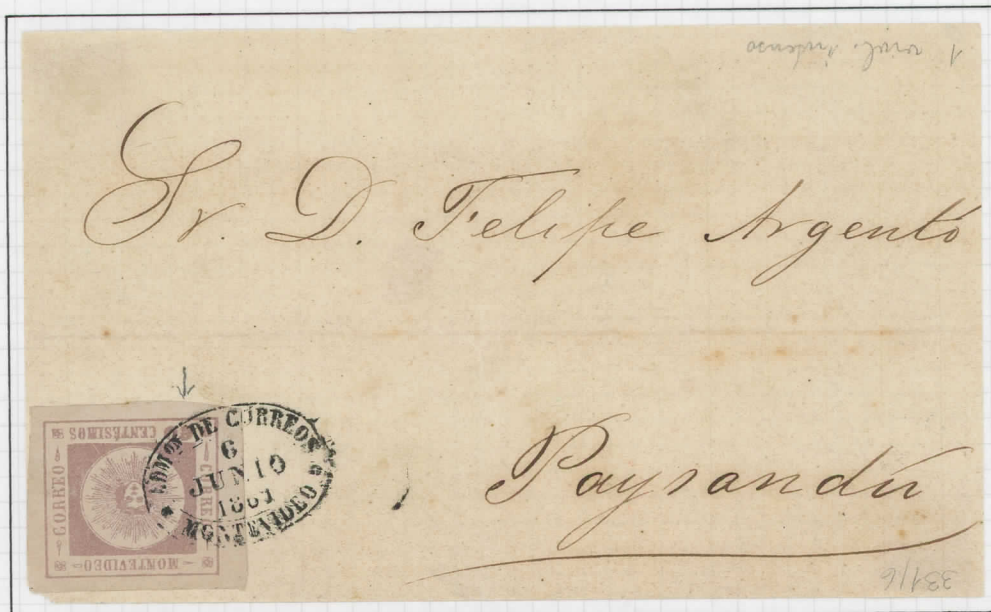
Mercedes to Montevideo, with arrival (R)

Pale Brown-Grey

"MONTEVIDEO" THICK FIGURES ISSUE



Paysandú to Salto by Brown-Lilac  
SS "Guaquey" ("Agencia de Vapores Esteban Rizzo")



6.6.1861 Montevideo to Paysandú Rose Brown

"MONTEVIDEO" THICK FIGURES ISSUE



Montevideo to Salto

Reddish Brown



Salto to Montevideo (13.5.1862)  
"Renta de Correos / Salto" c.d.s.

Type 2, Brown-Grey

"MONTEVIDEO" THICK FIGURES ISSUE



20.12.60 Montevideo to Salto

Fine Impression, Type 5  
(Stone I)



8.8.61 Salto to Montevideo, "Scars" Cancel Type 6, Reddish-Brown

"MONTEVIDEO" THICK FIGURES ISSUE



5.1861 Montevideo to Tacuarembó  
(Four-Fold Letter Rate)

Brown Rose



11.1861 Montevideo to Buenos Aires

Brown Lilac



"MONTEVIDEO" THICK FIGURES ISSUE



*Yellow-Orange*



*Yellow-Orange*



*Orange Ochre*



*Yellow-Orange*



*Orange Ochre  
Tacuarembó Oval*



*Lemon  
Fancy Cancel of  
Salto*

Montevideo Datestamp



*Orange*



*Orange-Ochre*



*Lemon-Yellow*

"MONTEVIDEO" THICK FIGURES ISSUE



Types: 7-8 (N-P)  
1-2 (U-V)

(Cert. Díaz-Paulos)



Types: 3-4 (W-X)  
9-10 (Q-R)

Subtypes (Prominent)



Yellow Orange  
Of type 6  
(Flaws in top  
label and Sun)



Orange Ochre  
Of type 3  
(Flaw at left)  
Mercedes Oval



Mustard  
Of type 1  
("O" of Montevideo  
missing and flaw in Sun)



Dark Orange  
Of type 2  
(Colourless flaw,  
center top)

"MONTEVIDEO" THICK FIGURES ISSUE



Dolores to Montevideo  
Dolores Oval (RR)

Orange - Yellow



11.4.1863 Montevideo to Buenos Aires  
"Scarab" Cancel

Lemon

"MONTEVIDEO" THICK FIGURES ISSUE



"Para dejar en el puesto de Don Diego Mc Intyre" Type 4



80c. Double Internal Rate

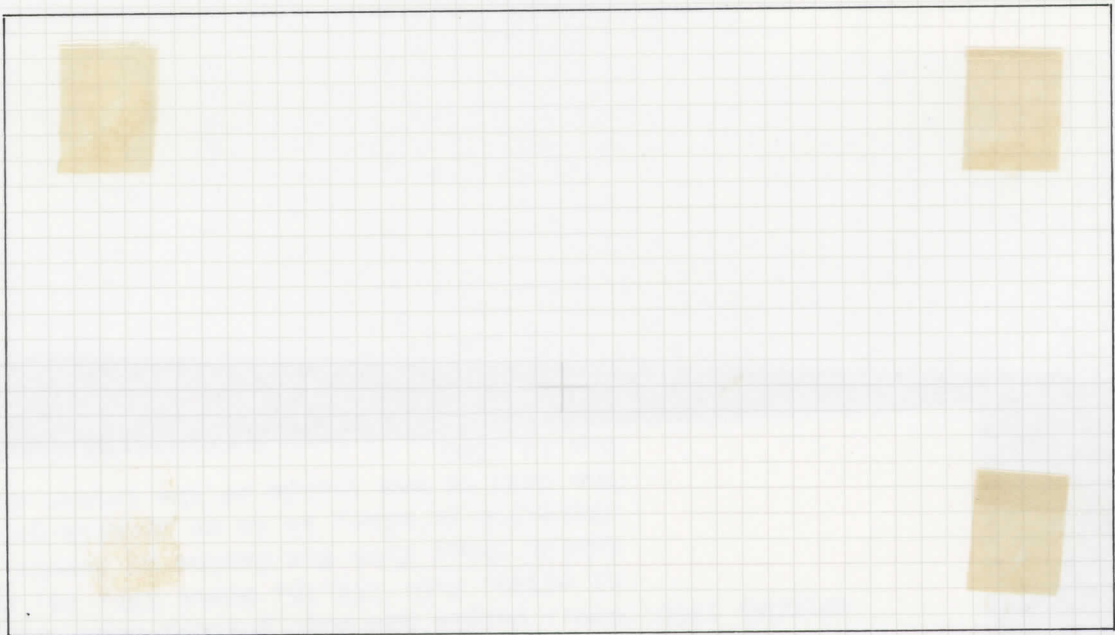
Type 10

Orange Ochre Shade

Buenos Aires to Perdido. Mail consigned for the last portion of the journey to forwarder Diego Mc Intyre.

"MONTEVIDEO" THICK FIGURES ISSUE

Unique Combination Franking



14.12.1860 San Carlos to Buenos Aires  
"San Carlos" oval (RR)

Mr D<sup>no</sup> Federico Cebils

B Aires



No. 30,086

*B. P. A. Expertising Limited*  
*London-England*  
EXPERT COMMITTEE

The Committee is of the opinion that the

..... - 6 JUL 1989 .....

..... URUGUAY 1860 Cover to Buenos Aires  
bearing 1860-61 60c grey-lilas and 80c  
yellow on thin paper No. 1000 imperf (5.5.15.16)  
..... cancelled by San Carlos oval in blue is genuine.....  
.....  
.....



*M. J. ...*  
*B Aires*  
*[Signature]*

Neither the Company nor the members of the Expert Committee can accept any liability, either collective or individual, for any opinion expressed



"MONTEVIDEO" THICK FIGURES ISSUE

Montevideo Datestamp



Red Carmine



Dark Carmine



Rose



Carmine Rose  
Salto cds



Carmine Rose  
"Certificado"



Dull Brown Rose  
Arredondo Oval



Rose Carmine  
Mercedes Oval



Dull Rose



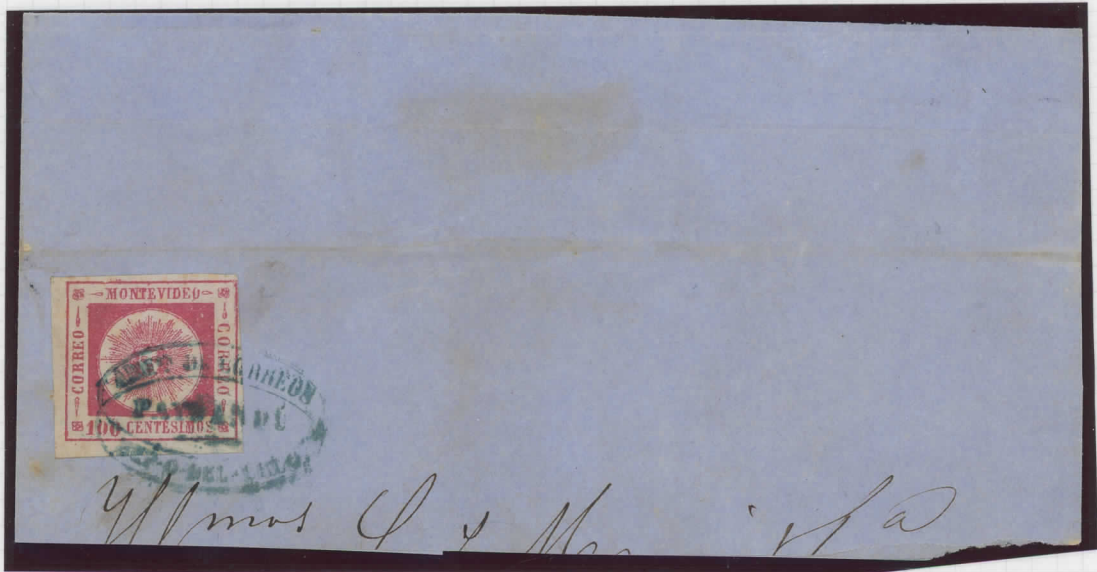
Carmine Rose  
Fray Bentos Oval  
"Certificado"

"MONTEVIDEO" THICK FIGURES ISSUE



Types 7-8-9

Framed "Certificado"



Paysandú Oval - Triple Rate



Type 11 - Paysandú Oval - Triple Rate



J. Buckton



Mrs. Larsson & Komp

Edvard Barthold & Co.  
MONTEVIDEO.

New York

For  
O. Santiago Abella



'Libertad'



Señores Apesteguy H.  
Compañía

Buenos Aires

APESTEGUY  
HERMANOS  
MONTEVIDEO

... and I certify that:

"MONTEVIDEO" THICK FIGURES ISSUE



*Greenish Blue*



*Blue*



*Greenish Blue*

*Montevideo Datestamp*



*Light Blue*



*Light Greenish Blue*



*Dark Blue*



*Blue*



*Milky Blue*



*Indigo*

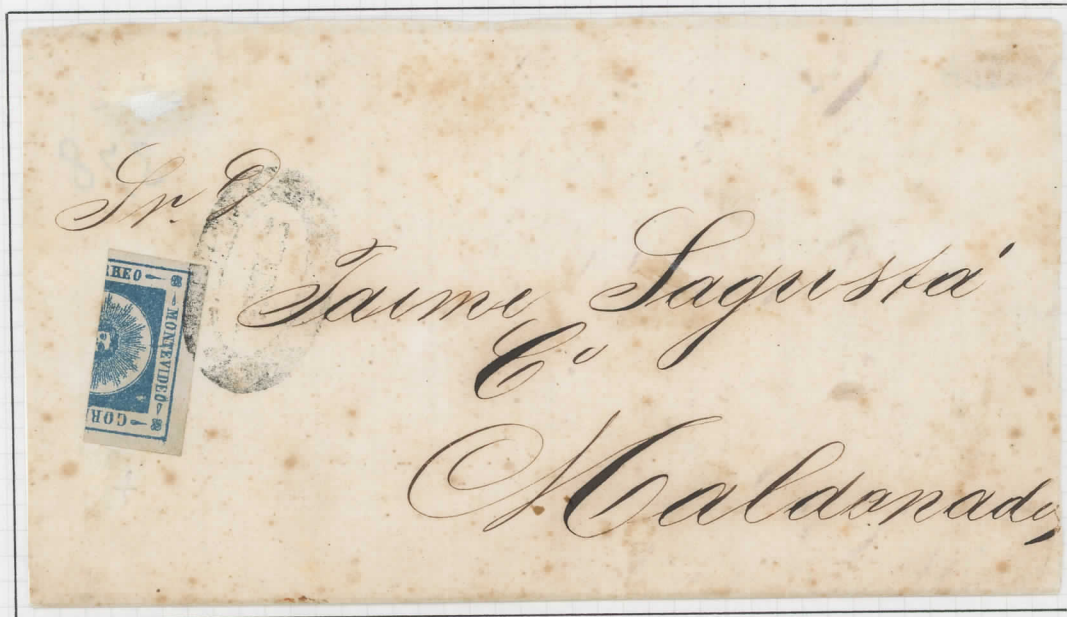


*Greenish Blue*



*Blue*

"MONTEVIDEO" THICK FIGURES ISSUE  
60c Single Internal Rate



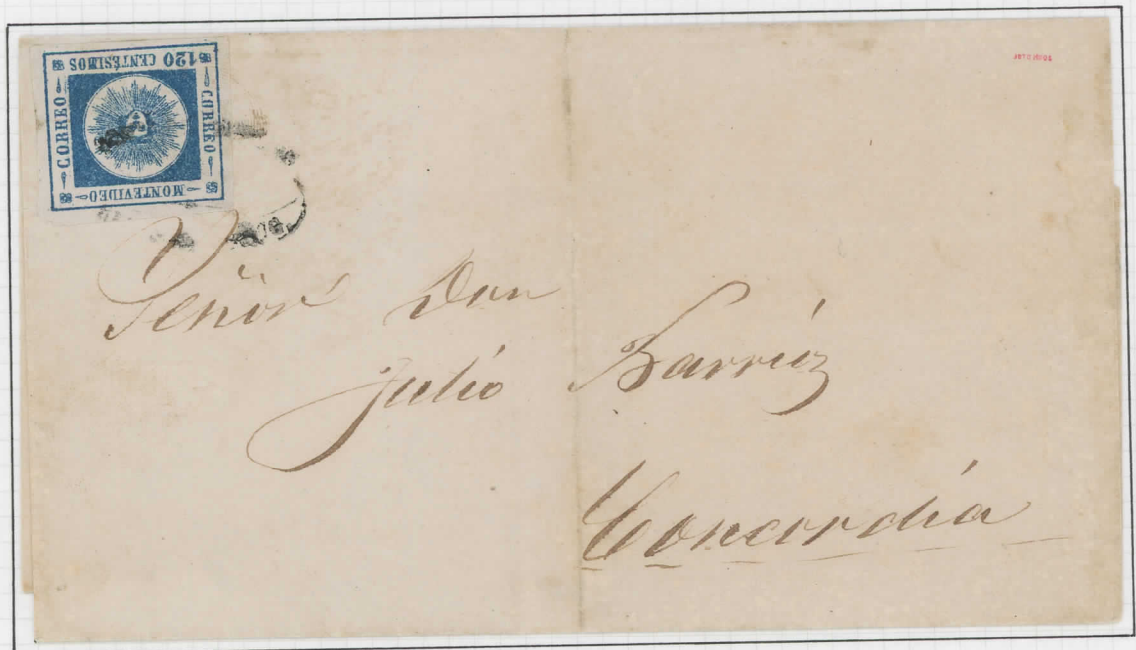
Montevideo to Maldonado  
"Sucursal" Oval

Type 4, Greyish Blue



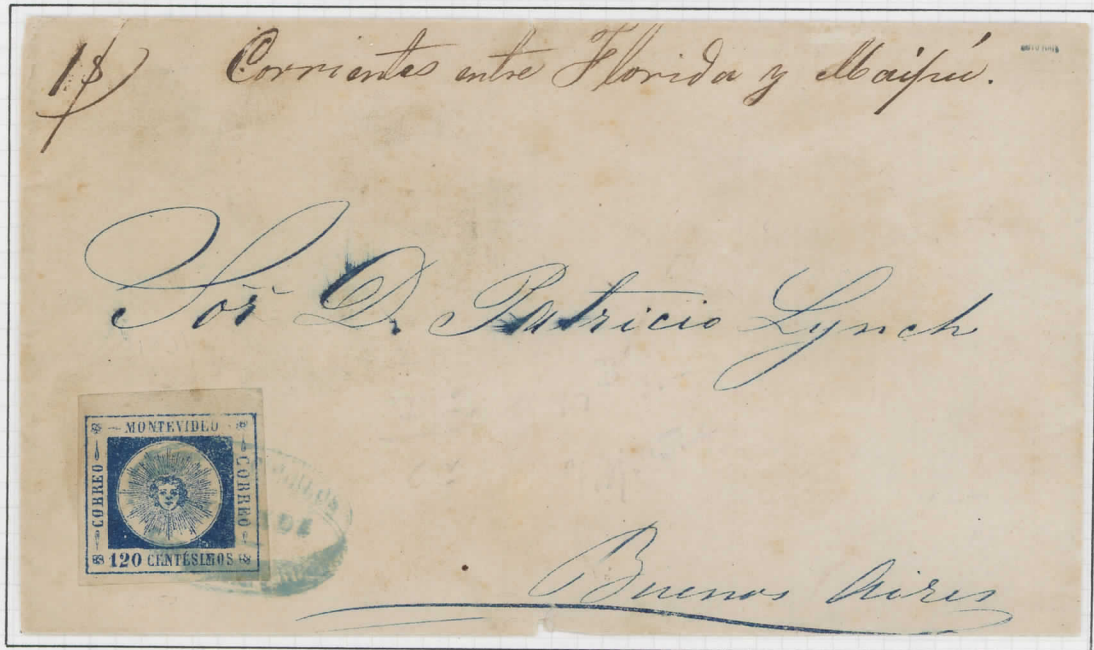
Dolores to Montevideo  
Dolores Oval (RR)

"MONTEVIDEO" THICK FIGURES ISSUE



To Concordia (Argentina)

"MONTEVIDEO" THICK FIGURES ISSUE



Passandú to Buenos Aires, charged "1/2" on arrival.  
Single External Rate



Maldonado to Concordia. Four-Fold Letter Rate Type 10

"MONTEVIDEO" THICK FIGURES ISSUE  
120c Single External Rate



Montevideo to Buenos Aires, by British SS "Espigador" Type 1  
Ex Lee



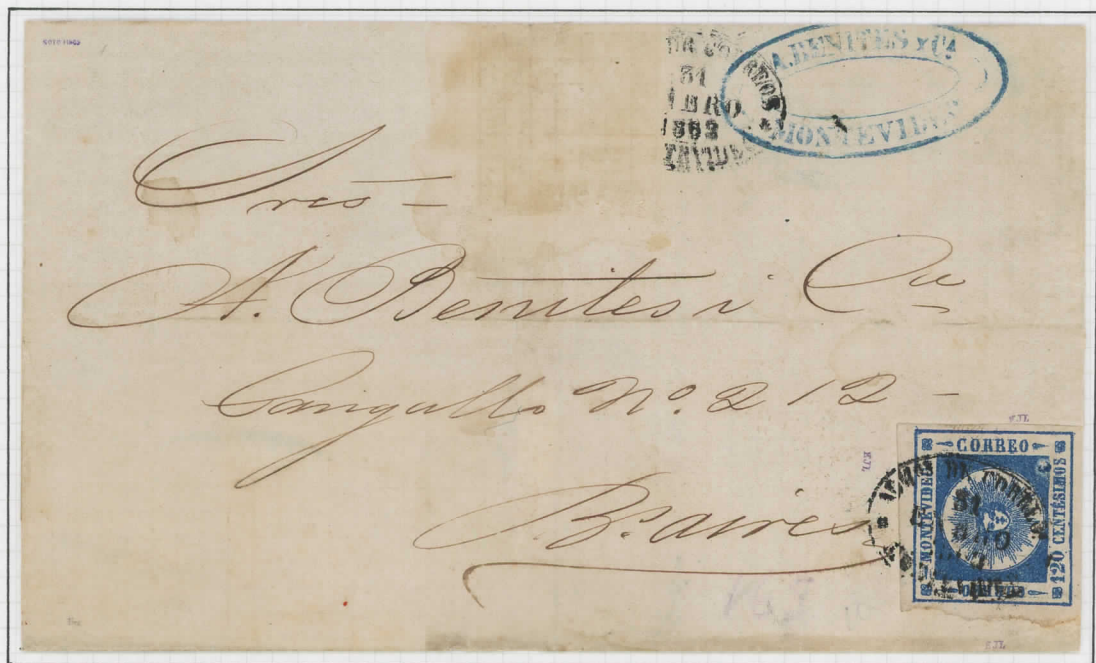
13.1.1862 Montevideo to Buenos Aires by ss "Mississippi" Type 11

"MONTEVIDEO" THICK FIGURES ISSUE



20.1.1862 Montevideo to Rosario (Argentina)

Type 6A



31.1.1862 Montevideo to Buenos Aires  
Ex Lee

Type 10

"MONTEVIDEO" THICK FIGURES ISSUE  
- 120c Single External Rate -



22.12.1862 Montevideo to Buenos Aires



5.2.1863 Montevideo to Rosario (Argentina)  
(Buenos Aires transit (R))



"MONTEVIDEO" THICK FIGURES ISSUE  
- 120 c Single External Rate -



27. 11. 1862 Montevideo to Buenos Aires

Type 30



1. 9. 1862 Montevideo to Buenos Aires

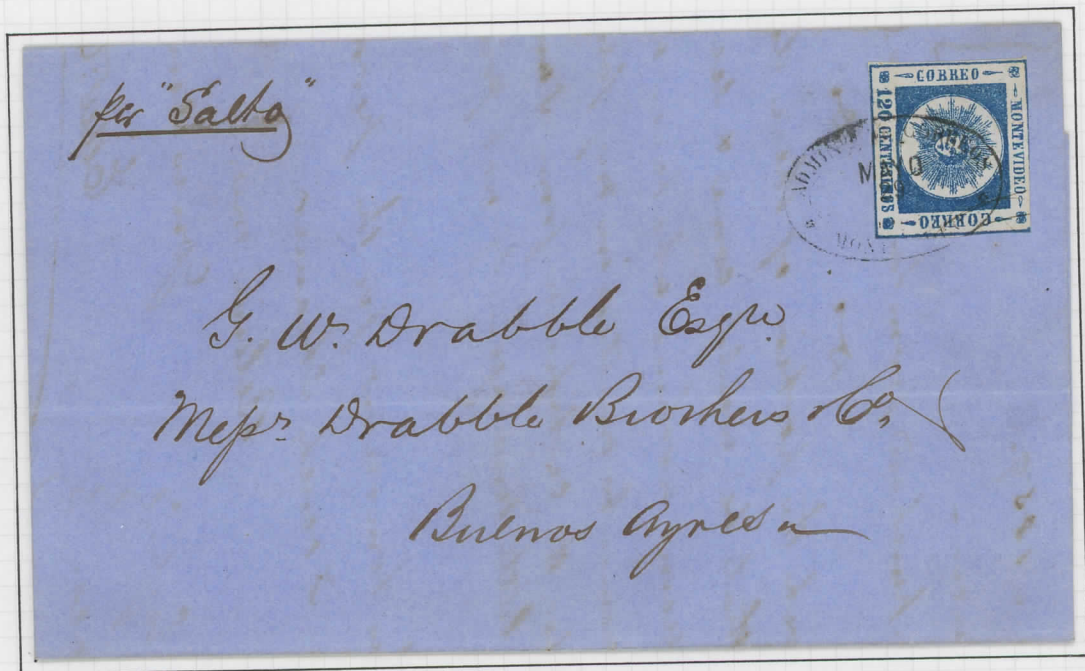
Type 76

"MONTEVIDEO" THICK FIGURES ISSUE



7.5.1863 Montevideo to Tacuarembó  
Four-Fold Letter Rate

Type 16

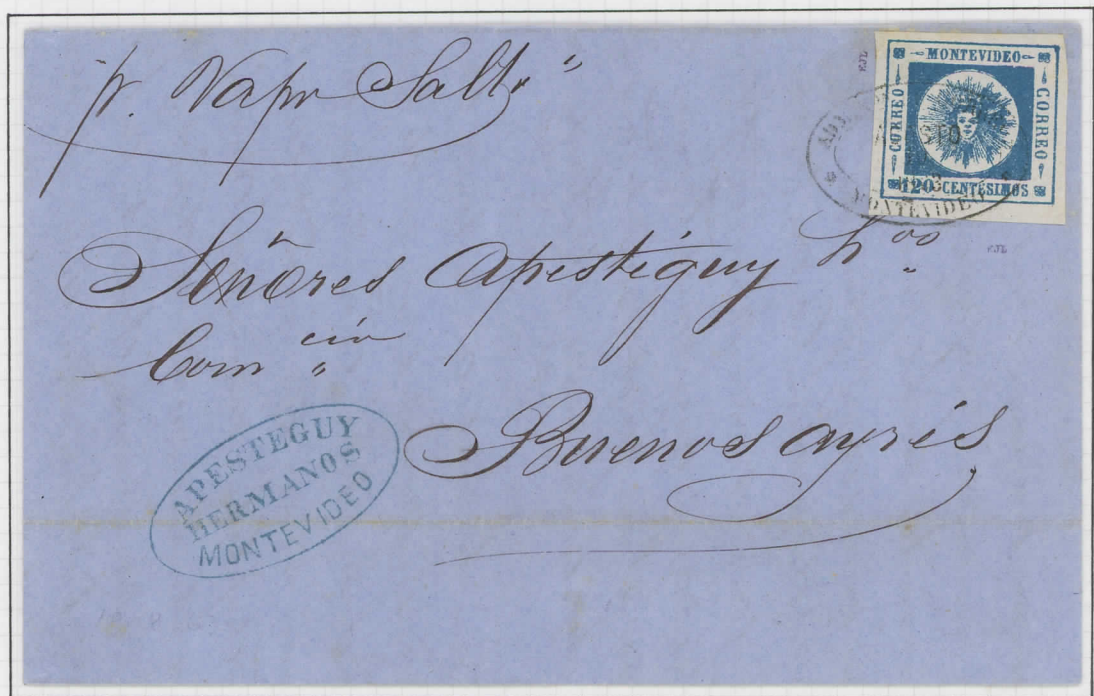


29.5.1863 Montevideo to Buenos Aires  
Single External Rate

"MONTEVIDEO" THICK FIGURES ISSUE  
 - 120c Single External Rate -



12.8.1863 Salto to Buenos Aires "Salto Scarab" Cancel



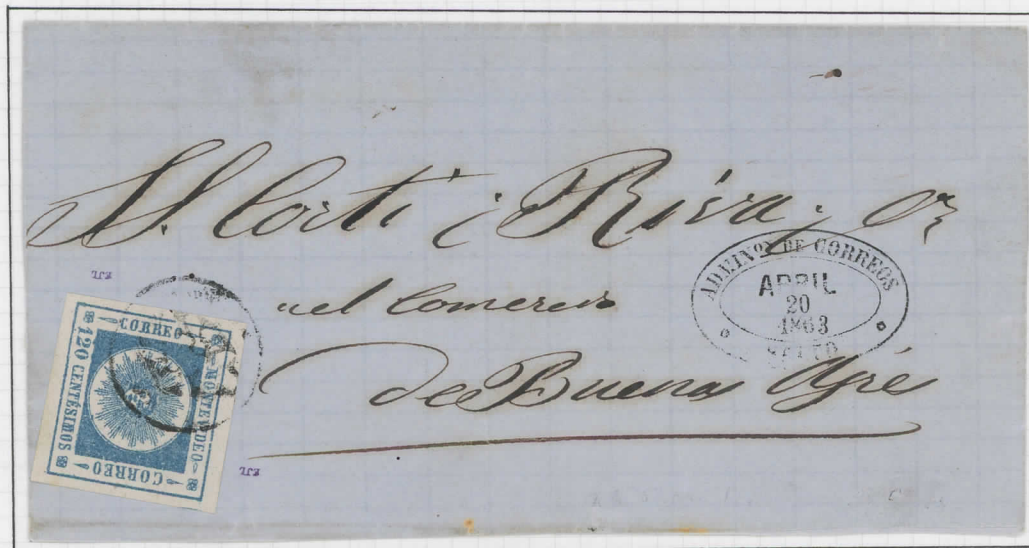
19.8.1863 Montevideo to Buenos Aires by SS "Salto" (which Ex Lee participated in the Triple Alliance War)

"MONTEVIDEO" THICK FIGURES ISSUE

- 120c Single External Rate -



20.4.1863 Montevideo to Buenos Aires  
Ex Lee by Argentine SS "Libertad"

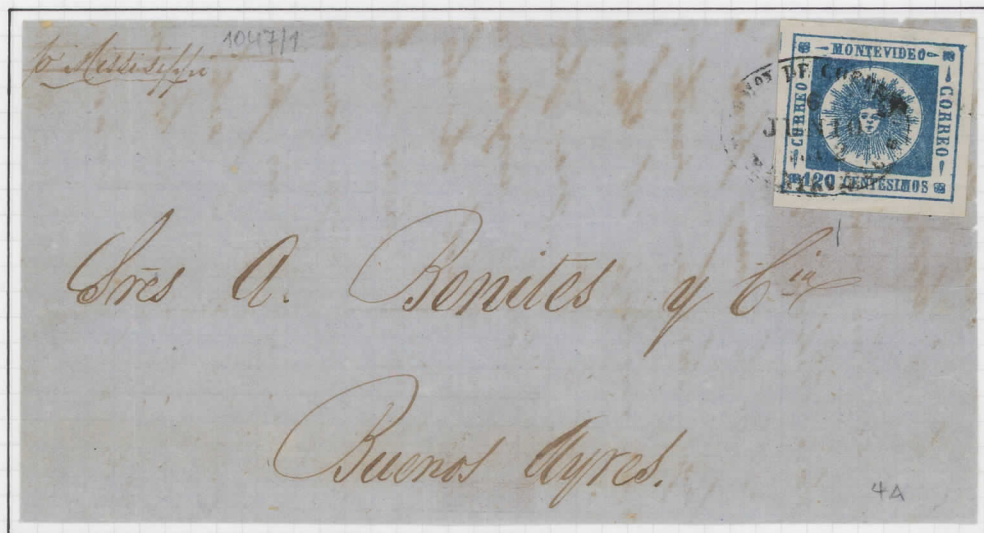


20.4.1863 Salto to Buenos Aires, "Scarab" Cancel  
Ex Lee

"MONTEVIDEO" THICK FIGURES ISSUE  
- 120c Single External Rate -



11.3.1862 Montevideo to Buenos Aires Type 11A



6.6.1862 Montevideo to Buenos Aires Type 4A  
by SS "Mississippi"

"MONTEVIDEO" THICK FIGURES ISSUE



Slate Blue  
Montevideo Datestamp



Blue  
Montevideo Datestamp  
Types 8-7



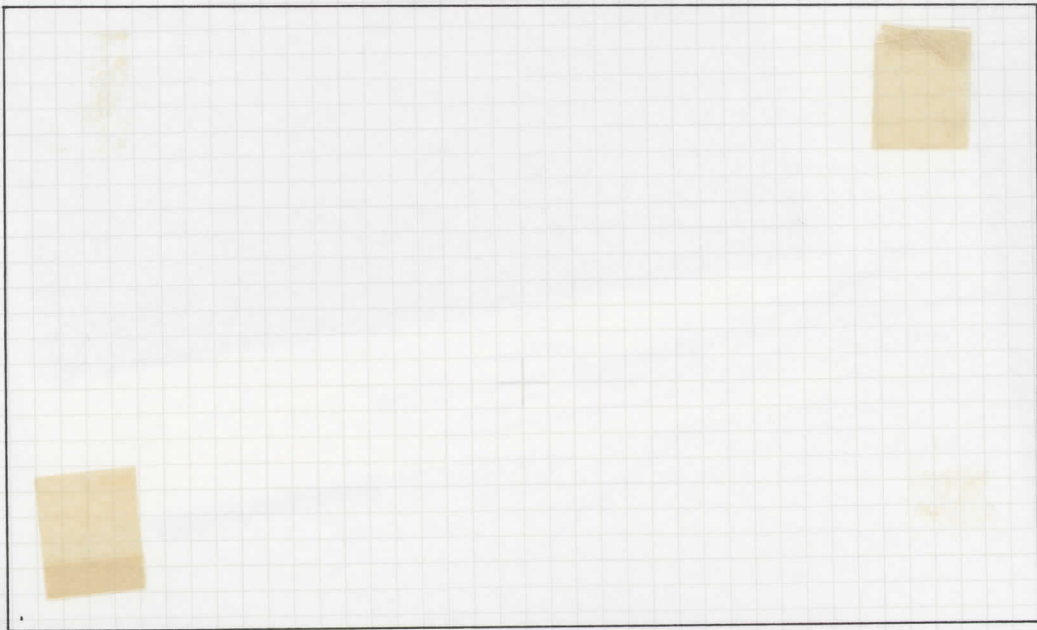
Blue-indigo  
Type 7



9.3.63 Montevideo to Buenos Aires  
Double External Rate (8 Adarme)  
Argentine "Libertad" Steamer

120c. - type 16  
60c. - type 13

"MONTEVIDEO" THICK FIGURES ISSUE



11.11.64 Montevideo to Buenos Aires by 120c - Type 6  
 Argentine SS "Río de la Plata" ("Alvarez y Riso") 6c - Type 2  
 12c - Type 5



Sealing  
 Franking

*Correo*

*C. D.<sup>no</sup> Javier Lopez*

*Buenos Aires*  
*Río de la Plata*

"MONTEVIDEO" THICK FIGURES ISSUE



Dark Green  
Type 9



Yellowish Green  
Type 5



Dark Green  
Type 4



Green  
Montevideo Date stamp



Green  
Subtype 12A  
Montevideo Date stamp



Green  
Montevideo Date stamp



Green  
Montevideo Date stamp



Yellowish Green  
Type 12



"MONTEVIDEO" BLOCK TYPE ISSUE

Transfer Block Reconstruction



30 Types

Lee and Hoffmann speculated that this value was printed in sheets of 78 units, consisting of settings of thirteen horizontal rows of six. It was believed to be composed from two transfer blocks of 30, plus portions of another including three tête-bêche positions.

496

"MONTEVIDEO" BLOCK TYPE ISSUE

Prominent Transfer Types



Blackish Green  
Type 20  
(Weak Corners)



Green  
Type 12  
(Broken Top Frame)



Pale Green  
Type 17



Dull Green  
Type 1  
(Broken Bottom Frame)

~~Yellow-Green~~  
Type 19



Green  
Type 14



Green  
Type 16

"MONTEVIDEO" BLOCK TYPE ISSUE



Vermilion  
Type 12



Red  
Type 28



Carmine  
Type 17

— SUBTYPES —



Subtype 9A  
Position 75



Subtype 10A  
Position 196  
(Ex Lee)

~~Subtype 11B  
Position 137  
(Ex Lee)~~



Subtype 18A  
Position 150

"MONTEVIDEO" BLOCK TYPE ISSUE

— SUBTYPES —



Subtype 3A  
Position 63  
(Ex Lec)



Subtype 5A  
Position 125



Subtype 6A  
Position 6  
(Ex Lec)



Subtype 6B  
Position 72  
(Ex Lec)



Subtype 7A  
Position 73

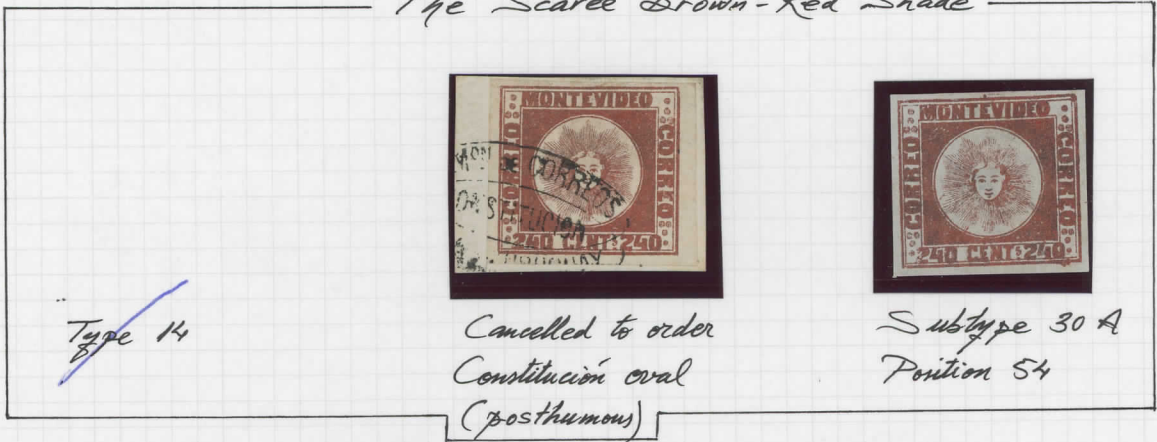


Subtype 8A  
Position 194

Subtype 9A  
Position 75

"MONTEVIDEO" BLOCK TYPE ISSUE

The Scarcie Brown-Red Shade



Type 14

Cancelled to order  
Constitución oval  
(posthumous)

Subtype 30 A  
Position 54



Type 13

Camelo oval

Transfer Varieties



Blurred  
Type 7  
Position 13



Uneven  
Type 19  
Position 169



Weak  
Type 19  
Position 199

"MONTEVIDEO" BLOCK TAPE ISSUE

UNADOPTED ESSAY



Found in the archives of  
the Post Office.

Inscribed "Diligencia", being  
inappropriate for water-borne mail  
The 240c. value is the rarer  
of the two denominations prepared

"MONTEVIDEO" THIN FIGURES



Deep Gray Lilac



Gray Lilac



Light Gray Slate  
Montevideo Datestamp



Dark Gray Lilac



Brown-lilac  
Type 13



Purple-Violet  
Subtype 19A

————— Montevideo Datestamp —————



Slate Gray  
Paysandu Oval



Gray  
Paysandu Oval



Deep Gray Lilac  
Florida Oval



Gray Slate  
Montevideo Datestamp

"MONTEVIDEO" THIN FIGURES ISSUE



Grey Slate (Deep)



Grey Slate  
Subtype 14c  
(Ex Hoffmann)



Grey

————— Montevideo Datestamp in Red —————

Only used in this colour during the first month of issue, July 1859



Grey Slate  
Faysandú Oval



Grey Lilac  
Mercedes Oval



Light Grey Slate  
Faysandú Oval



Grey Lilac  
"Scarab" of Salto  
&  
"Renta de Correos / Salto"



Grey  
Cerro Largo Oval



Grey Lilac  
"Scarab" of Salto



"MONTEVIDEO" THIN FIGURES ISSUE

60 c. Single Internal Rate



4.1.1860. Montevideo to Salto  
Ex Sciarras

Grey-lilac



14.11.59 Montevideo to Tacuarembó

Grey-Brown

"MONTEVIDEO" THIN FIGURES ISSUE



24.11.1859  
Ex Lee

Montevideo to Salto

Grey-Lilac



Rosario to Colonia. Rosario Oval (RR)  
60c. Slate Grey, type 4

"MONTEVIDEO" THIN FIGURES ISSUE



Subtype 13A  
(Ex Lee)



Cerro Largo Oval



Durazno Oval



Subtype 8A

Montevideo Datestamp



"Scarab" Cancel of Salto

Fray Bentos  
Oval

"MONTEVIDEO" THIN FIGURES ISSUE



Brown Rose



Brown Rose



Brown Rose  
Subtype 15 A  
Large colorless area  
in "Sun's" rays  
The Most Prominent  
Flaw in this Value  
(Ex Hoffmann)



Brown Rose  
Pre-printing crease  
Montevideo Datestamp



Light Brown Rose  
Types 19-20 / 1-2  
- Cert. Díaz Paulos -  
(Ex Hoffmann)



Reddish Brown  
"Scarab" of  
Salto



Brown Rose



Deep Brown Rose



Rose

Montevideo Datestamp

"MONTEVIDEO THIN FIGURES ISSUE"



Type 3



Type 18



Subtype 11A



Subtype 12A



Type 13  
Paysandú Oval



Type 13



Type 18



Type 15



Type 14

"MONTEVIDEO" THIN FIGURES ISSUE  
120 c. Single External Rate

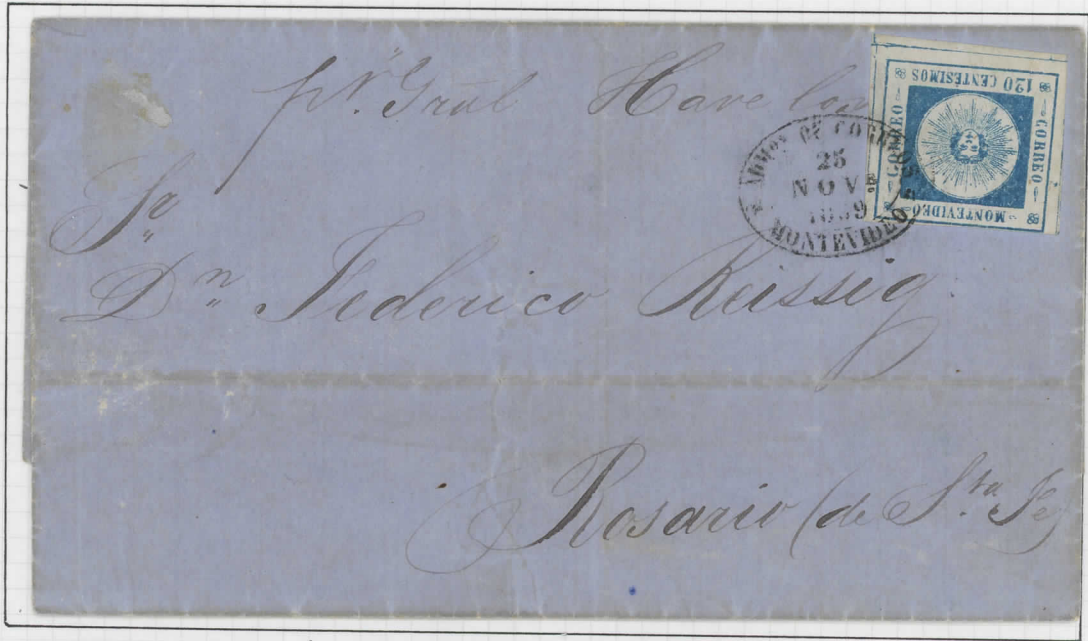


21.3.60 Montevideo to Buenos Aires by SS "Salto" Subtype 1D

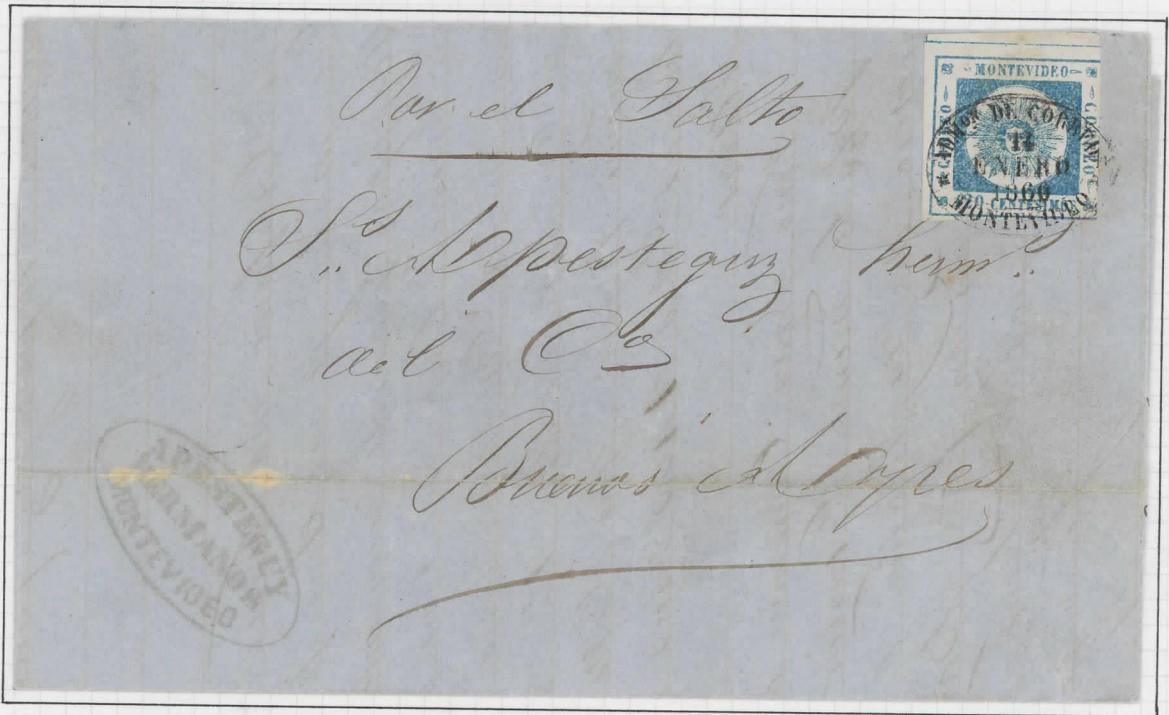


21.11.60 Montevideo to Buenos Aires by Argentine SS "Constitución" Type 8

"MONTEVIDEO" THIN FIGURES ISSUE  
120c. Single External Rate



21.81.59 Montevideo to Rosario (Argentina)



14.1.60 Montevideo to Buenos Aires by SS "Salto" (on service Type 22 during the Triple Alliance War).

"MONTEVIDEO" THIN FIGURES ISSUE  
120 c. Single External Rate



19.4.60 Montevideo to Buenos Aires



14.6.60 Montevideo to Rosario (Argentina)  
(by SS "Montevideo" ("A. Píera y Cía." Agents))

Slate-Blue (R)



"MONTEVIDEO" THIN FIGURES ISSUE  
120 c. Single External Rate



13.6.60 Montevideo to Buenos Aires Type 16  
by Argentine SS "Constitución", charged "17." on arrival (R)



19.7.60 Montevideo to Buenos Aires Type 16  
Ex Sciarra

"MONTEVIDEO" THIN FIGURES ISSUE



Pale Green  
Type 11



Light Green  
Type 20  
Pos. 118



Green  
Type 1  
Pos. 127



Dark Green  
Subtype 1B



Montevideo Datentamp  
(2nd type)  
Type 5



Montevideo Datentamp



(Indistinct Oval)



Nueva Palmira Oval  
(Ex Sciarra)



Florida Oval  
Type 13  
Pos. 83

"MONTEVIDEO" THIN FIGURES ISSUE



Types:	(Ex Lee)	Positions:
2-1-2		130-131-132
4-3-4		142-143-144
6-5-6		154-155-156
8-7-8		166-167-168
10-9-10		178-179-180
12-11-12		190-191-192

"MONTEVIDEO" THIN FIGURES ISSUE



Types 17-18-17-18  
(Ex Lee)

Positions 105-106-107-108



Types 11-12-11  
13-14-13

Positions 185-186-187  
197-198-199



Types 5-6  
7-8

Positions 35-36  
47-48

"MONTEVIDEO" THIN FIGURES ISSUE

The scarce dark green shade



Types 4-2 Positions 140-141



Types:  
13-14  
15-16

Positions:  
80-81  
92-93



Types:

Positions:

7-8	167-168
9-10	179-180
11-12	191-192
13-14	203-204



Types 17-18



Types:

Positions:

5-6	152-153
7-8	164-165

"MONTEVIDEO" THIN FIGURES ISSUE



Registered cover from San Carlos to Montevideo  
100 c. Registration Fee + 80 c. Double Weight Postage  
(San Carlos Oval 22)



Canelo to Montevideo. Triple External Rate  
(Cent. Holcombe)

"MONTEVIDEO" THIN FIGURES ISSUE



Vermilion  
Type 9



Vermilion  
Subtype 14B



Vermilion  
Type 5



Dark Vermilion  
Subtype 6A



18.7.61 240 c. Vermilion

Carried by the French "Saintonge" steamer on cover to Nantes (France).  
(Cert. Diaz-Paulos)  
Ex Diaz-Mercedes

Only about five "Suns" Issues covers addressed to a  
Transatlantic Destination.

"MONTEVIDEO" TYPE FIGURES ISSUE

— 60 c. Fine Impression —

*Fade Dark Brown*



*Light Brown, Bistre  
Montevideo Oval*



*Brown (Faint)*



*Montevideo Datestamps*

*Brown Bistre*



*Fade Black Brown*



*Black Brown*



*Chocolate*



*Fade Brown*



*Brown Black*



*Bistre Brown*



*Fade Dark Chocolate*





"MONTEVIDEO" THICK FIGURES ISSUE

— 60 c. Fine Impression —

Fancy Cancel of Salto



Black Brown



Pale Brown



Light Bistre Yellow/  
Pale Chestnut



Brown Bistre



Pale Brown Bistre  
Paysandú Oval



Pale Brown  
Arredondo Oval



Chocolate (deep)  
Mercedes Oval



Pale Brown  
Paysandú Oval



Pale Brown Grey  
San Carlos Oval



Pale Grey Brown  
Tacuarembó Oval



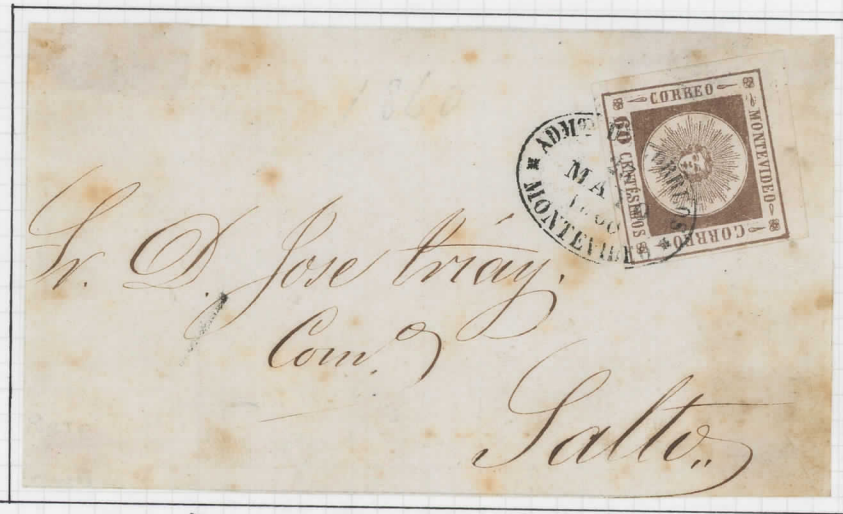
Grey Violet  
Tacuarembó Oval



Bistre  
"Sursural" of  
Montevideo

"MONTEVIDEO" THICK FIGURES ISSUE

60c. Fine Impression



23.5.60 From Montevideo to Salto Chocolate  
(RR shade on cover)



15.6.60 Montevideo to Paysandú Bistre

"MONTEVIDEO" THICK FIGURES ISSUE  
60c. Fine Impression



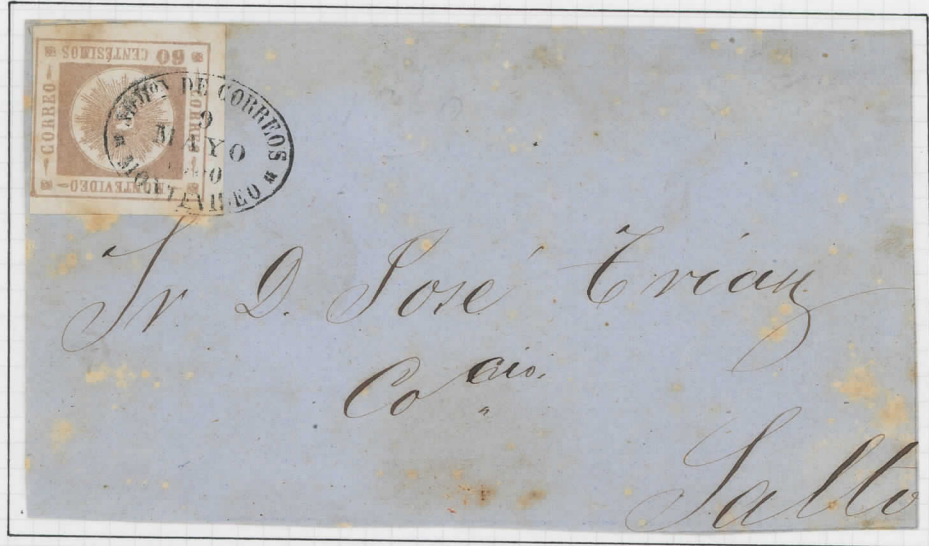
30.4.60 Montevideo to Tacuarembó Reddish Brown



20.1.61 Montevideo to Tacuarembó Brown

"MONTEVIDEO" THICK FIGURES ISSUE

60 c. Fine Impression



9.5.60 Montevideo to Salto

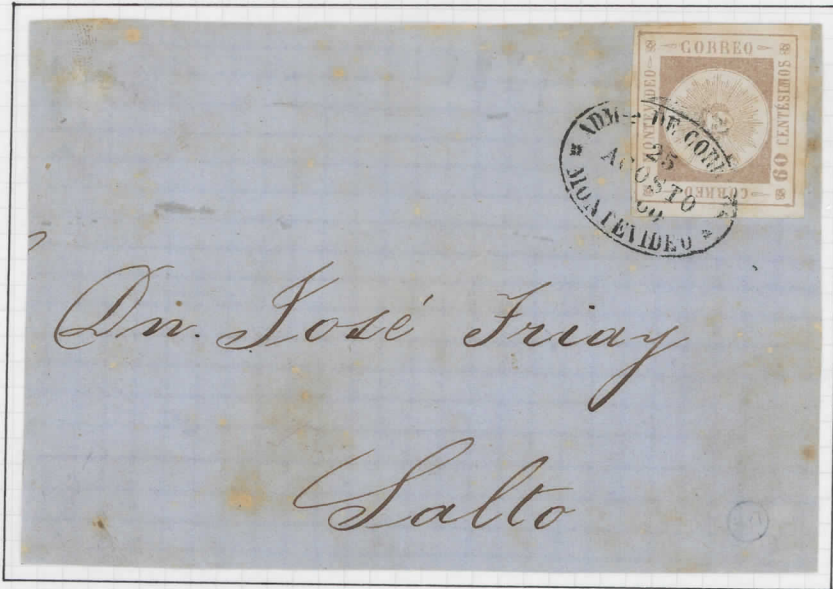
Brown



Type 23. Pale Brown Bistre

"MONTEVIDEO" THICK FIGURES ISSUE

60c. Fine Impression



25.8.60 Montevideo to Salto Type 3, Brown

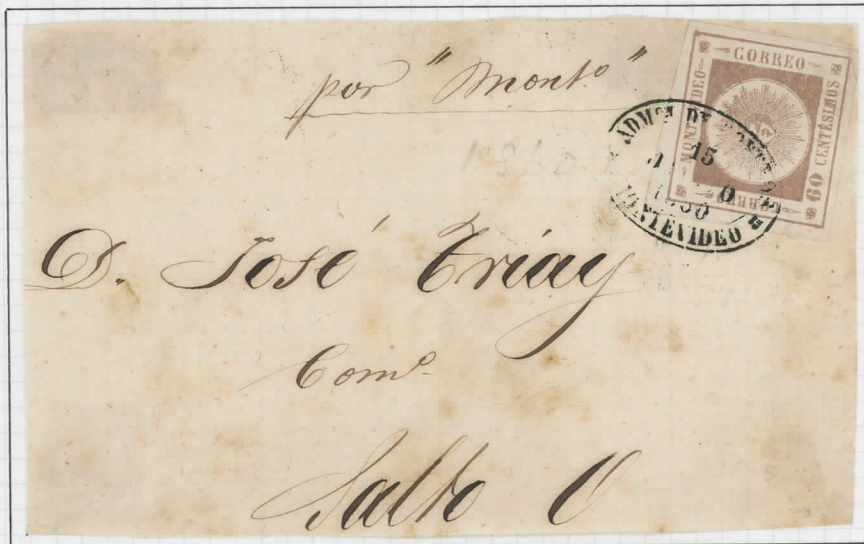


Rosario to Colonia  
RR Rosario Oval!

Type 1. Brown-Distre

"MONTEVIDEO" THICK FIGURES ISSUE

60c. Fine Impression



15.6.60 Montevideo to Salto

Deep Brown



14.2.60 Montevideo to Colonia

Bistre

"MONTEVIDEO" THICK FIGURES ISSUE  
60c Fine Impression



60c Coarse Impression



Transfer Block Reconstruction of 12 Types  
(including scarce/rare Montevideo small c.d.s., Cerro Largo Oval,  
and Maldonado Oval)

I x Hoffmann